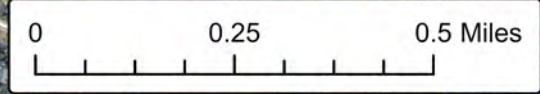
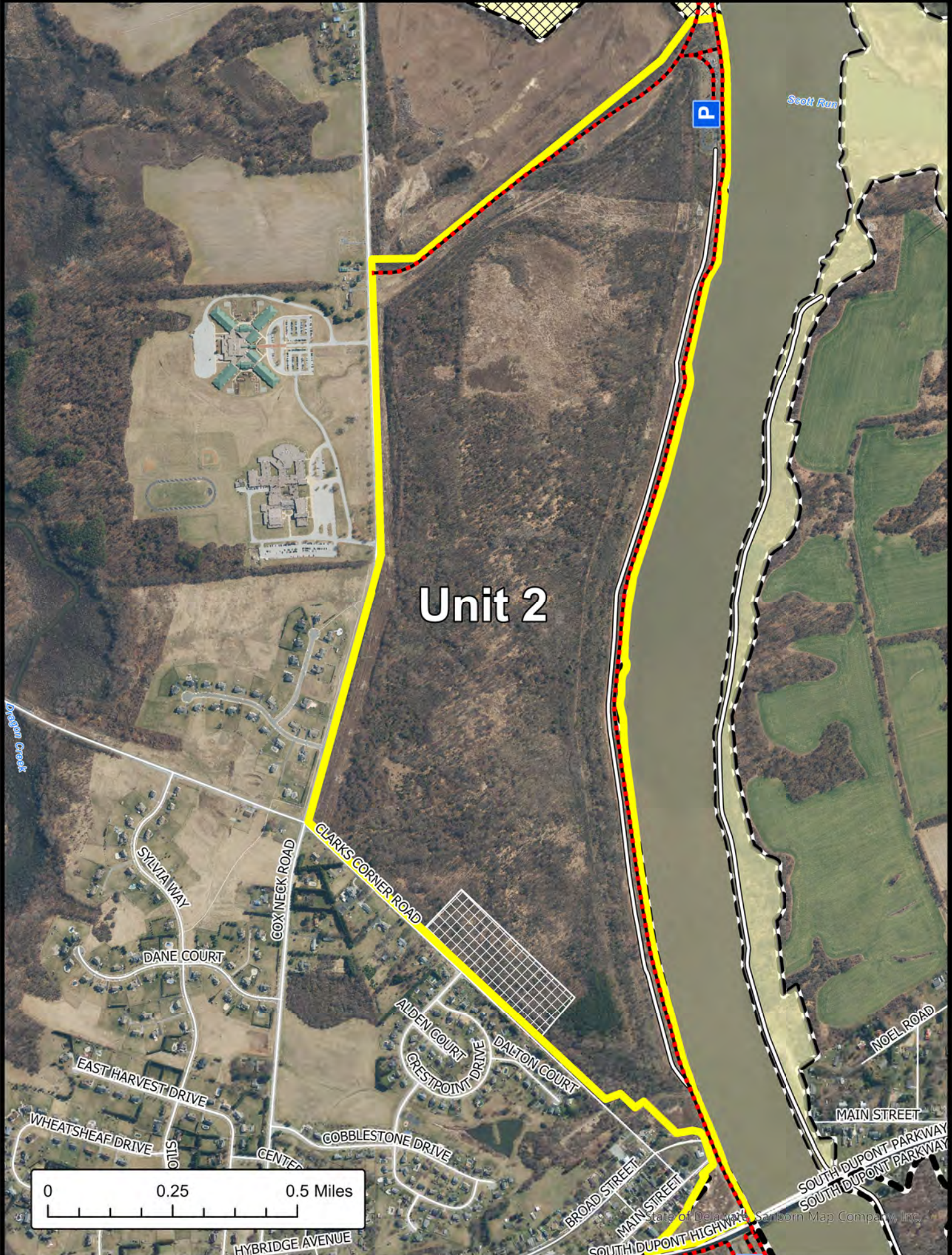




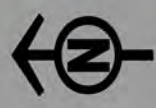
# C&D CANAL CONSERVATION AREA

## Trapping Unit 2



- Wildlife Area
- Area Closed - No Hunting or Trapping
- Safety Zone
- Scott Run - Youth 4H Only

- CAP Exempt
- Maintained Roadway
- Michael Castle Trail
- Trapping Unit

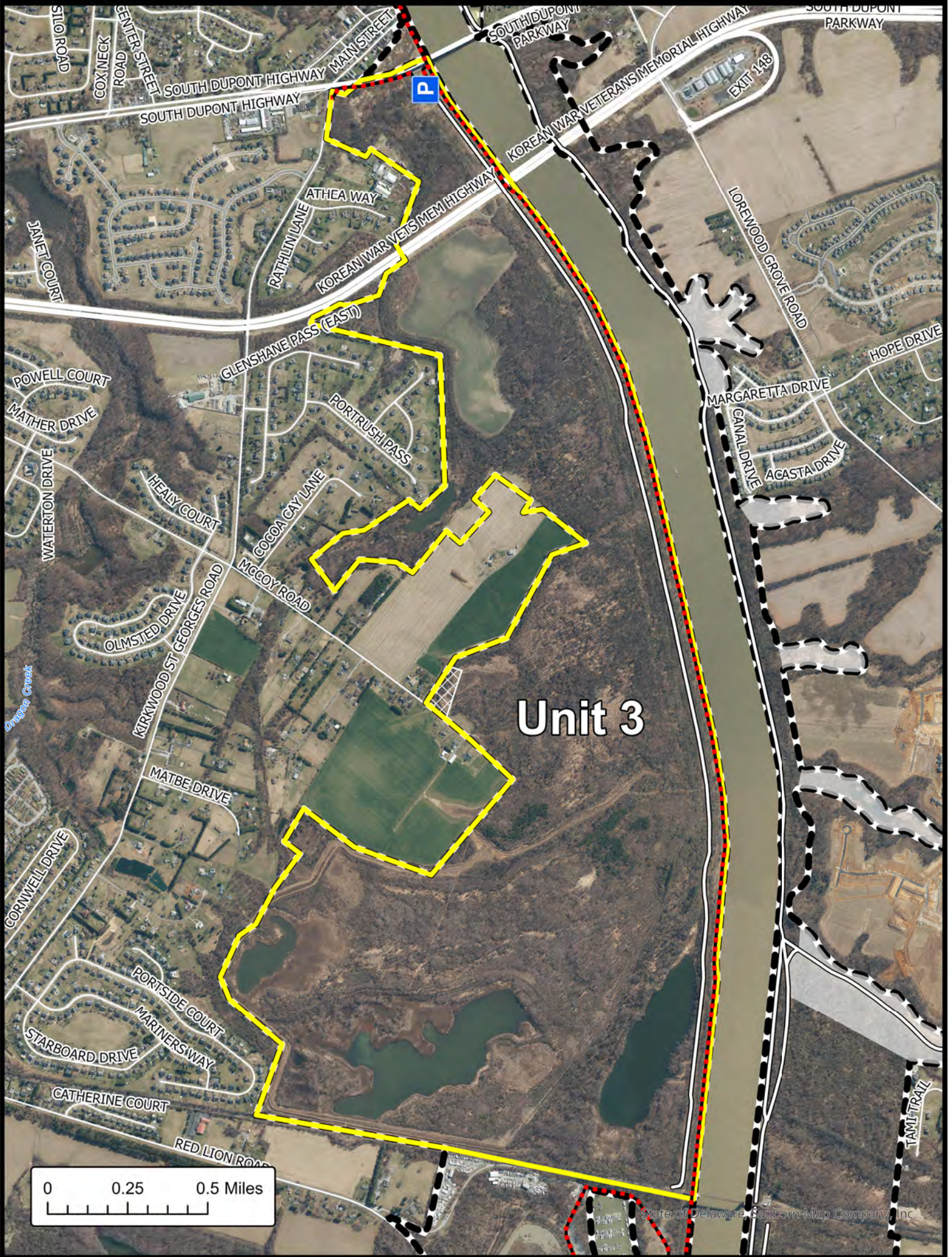


BOUNDARIES SHOWN ARE APPROXIMATE AND SHOULD ONLY BE USED AS A GUIDE






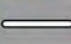




# C&D CANAL CONSERVATION AREA

## Trapping Unit 3



State of Delaware - Sanborn Map Company, Inc.

-  Wildlife Area
-  Refuge
-  Safety Zone
-  Scott Run - Youth 4H Only
-  CAP Exempt
-  Maintained Roadway
-  Michael Castle Trail
-  Trapping Unit

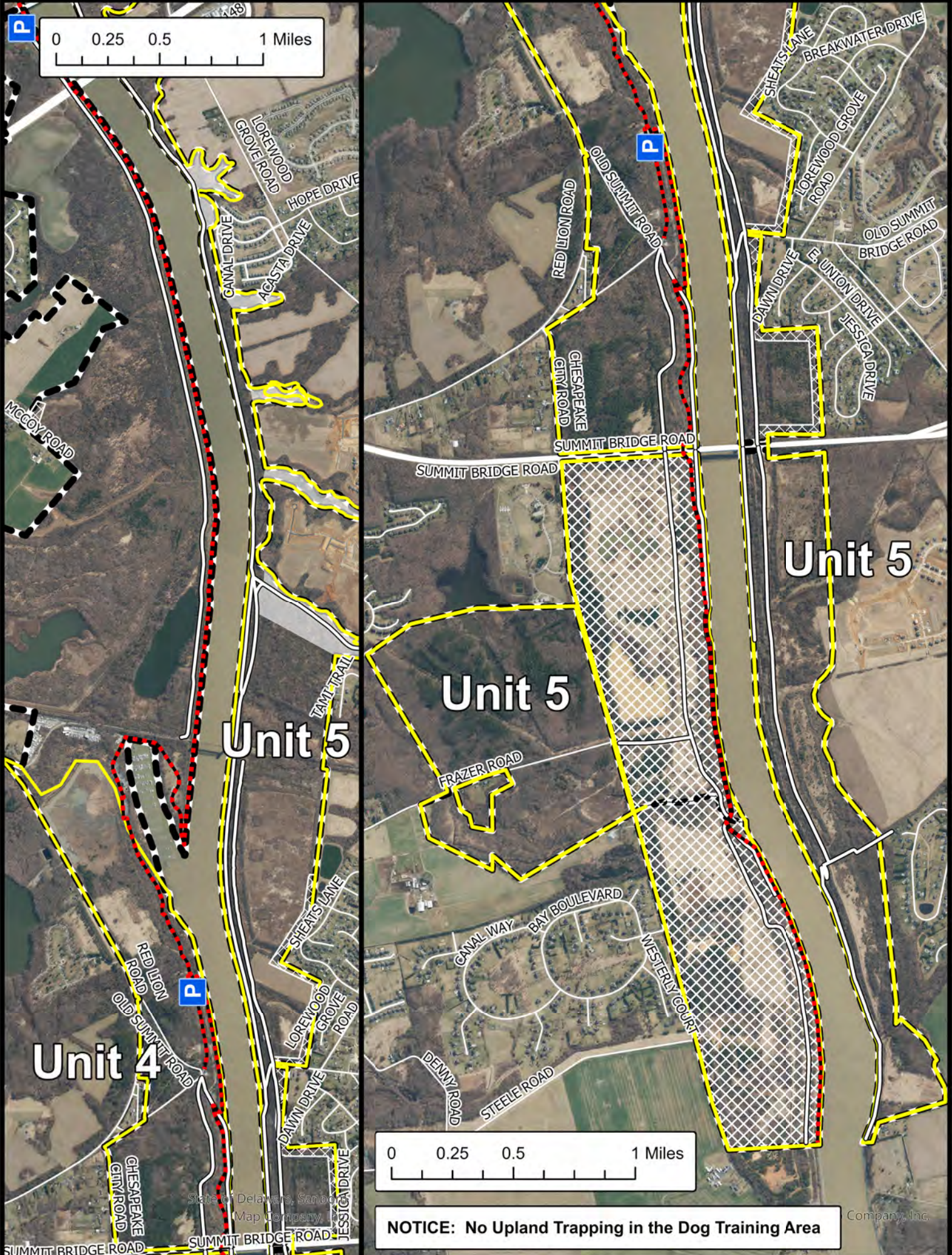


BOUNDARIES SHOWN ARE APPROXIMATE AND SHOULD ONLY BE USED AS A GUIDE



# C&D CANAL CONSERVATION AREA

## Trapping Units 4 & 5



- Wildlife Area
- Dog Training Area
- Safety Zone
- CAP Exempt
- Maintained Roadway
- Michael Castle Trail
- Trapping Unit

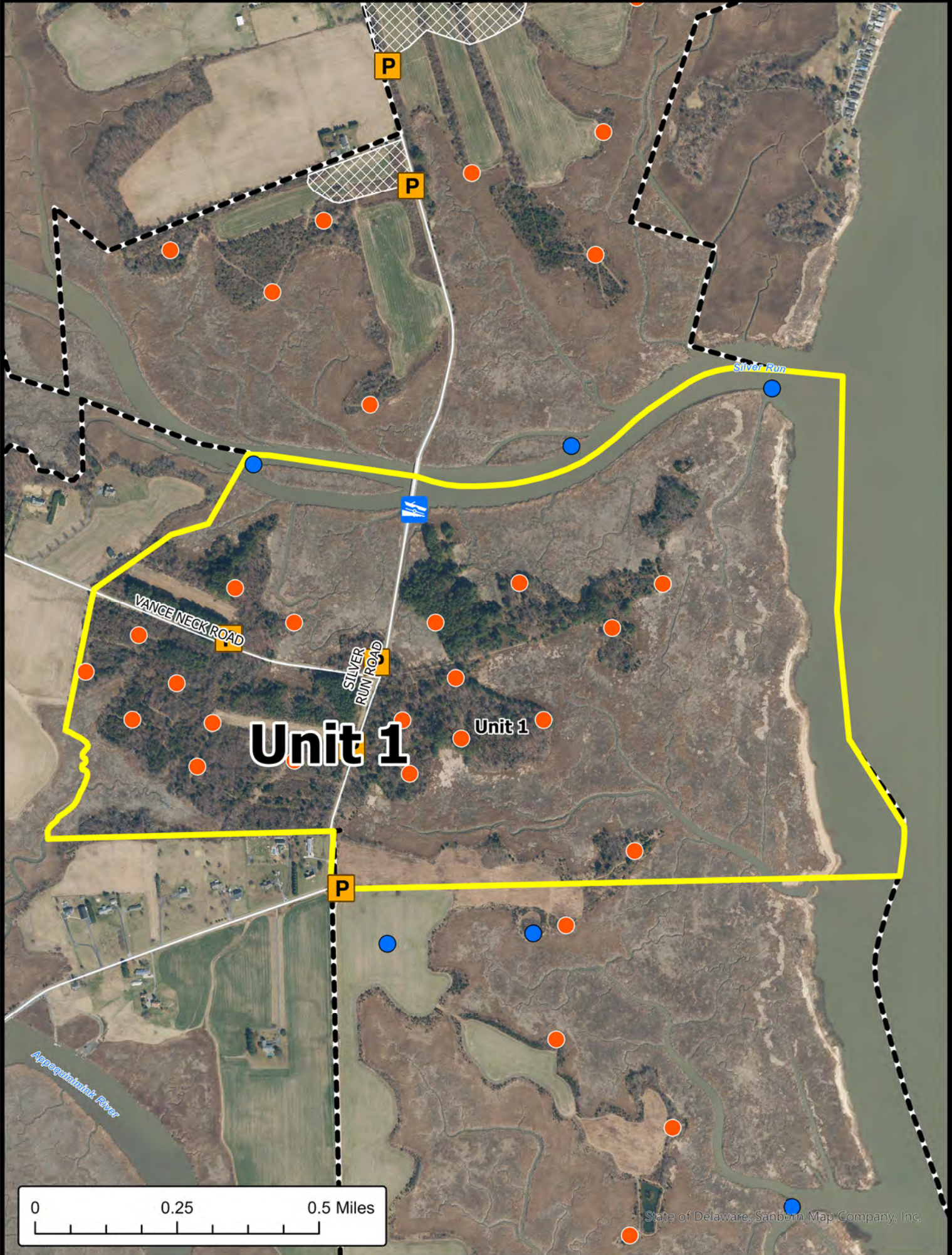


BOUNDARIES SHOWN ARE APPROXIMATE AND SHOULD ONLY BE USED AS A GUIDE



# AUGUSTINE WILDLIFE AREA

## Trapping Unit 1



**Wildlife Area**



**Safety Zone**



**CAP Required**



**Waterfowl Blind/Blind Site**



**Deer Stand**



**Boat Ramp**



**Trapping Unit**

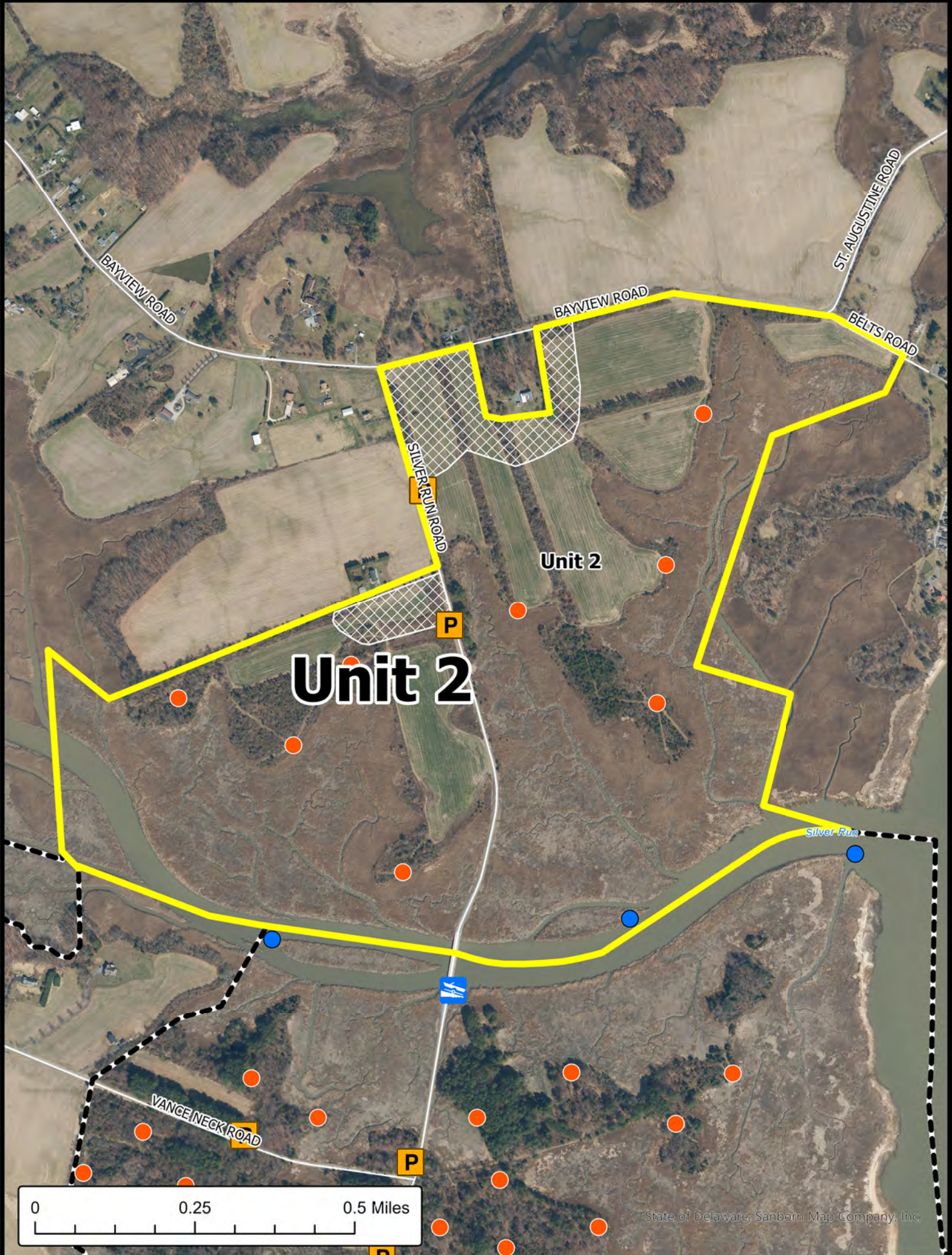


BOUNDARIES SHOWN ARE APPROXIMATE AND SHOULD ONLY BE USED AS A GUIDE



# AUGUSTINE WILDLIFE AREA

## Trapping Unit 2



- Wildlife Area
- Safety Zone
- CAP Required
- Waterfowl Blind/Blind Site

- Deer Stand
- Boat Ramp
- Trapping Unit



BOUNDARIES SHOWN ARE APPROXIMATE AND SHOULD ONLY BE USED AS A GUIDE



# AUGUSTINE WILDLIFE AREA

## Trapping Unit 4



-  Wildlife Area
-  Waterfowl Blind/Blind Site
-  Safety Zone
-  Deer Stand
-  CAP Required
-  Trapping Unit

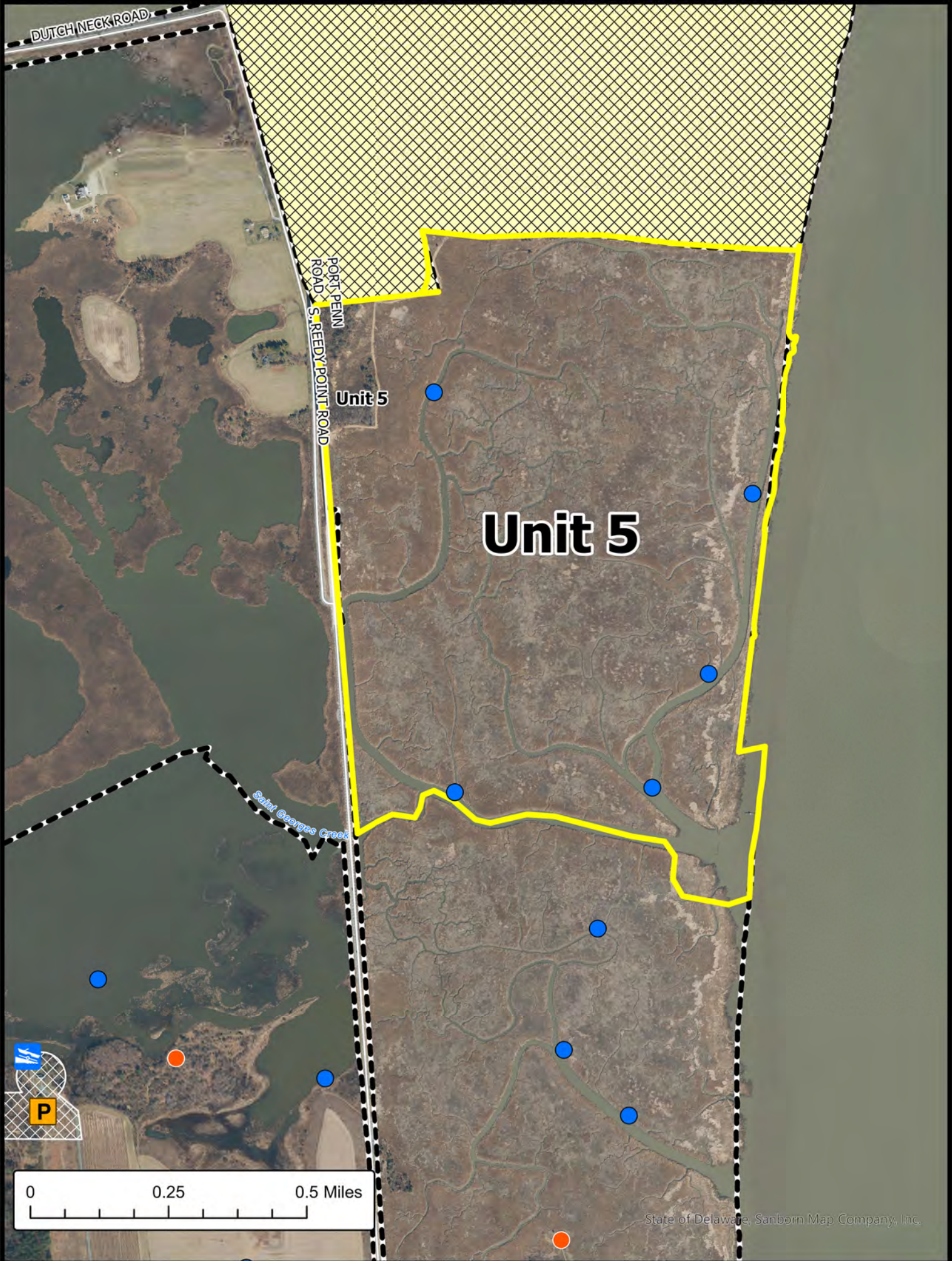


BOUNDARIES SHOWN ARE APPROXIMATE AND SHOULD ONLY BE USED AS A GUIDE



# AUGUSTINE WILDLIFE AREA

## Trapping Unit 5



State of Delaware, Sanborn Map Company, Inc.

Wildlife Area

Area Closed - No Hunting or Trapping

Safety Zone

CAP Required

Waterfowl Blind/Blind Site

Deer Stand

Boat Ramp

Trapping Unit

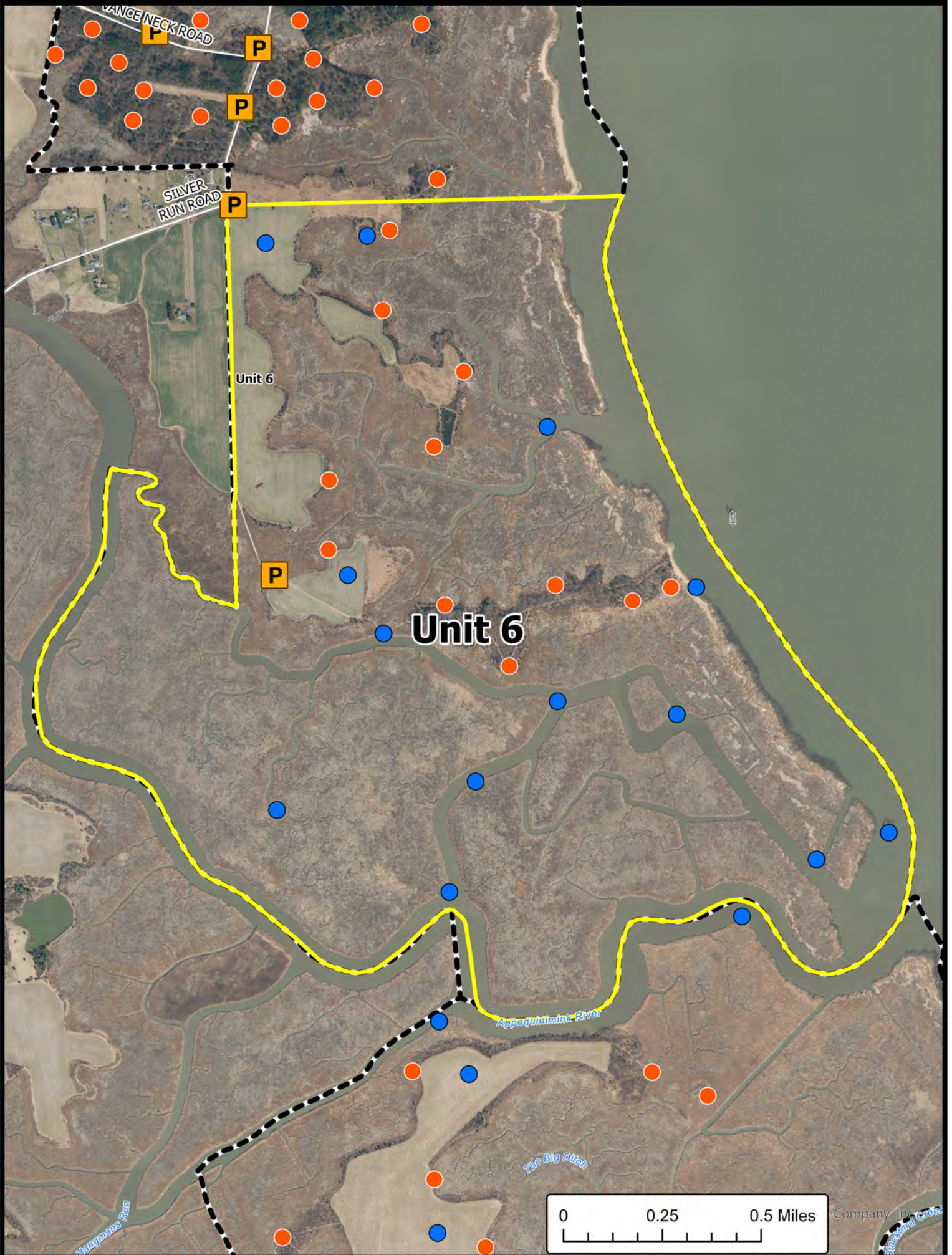


BOUNDARIES SHOWN ARE APPROXIMATE AND SHOULD ONLY BE USED AS A GUIDE



# AUGUSTINE WILDLIFE AREA

## Trapping Unit 6



Wildlife Area

CAP Required

Waterfowl Blind/Blind Site

Deer Stand

Trapping Unit

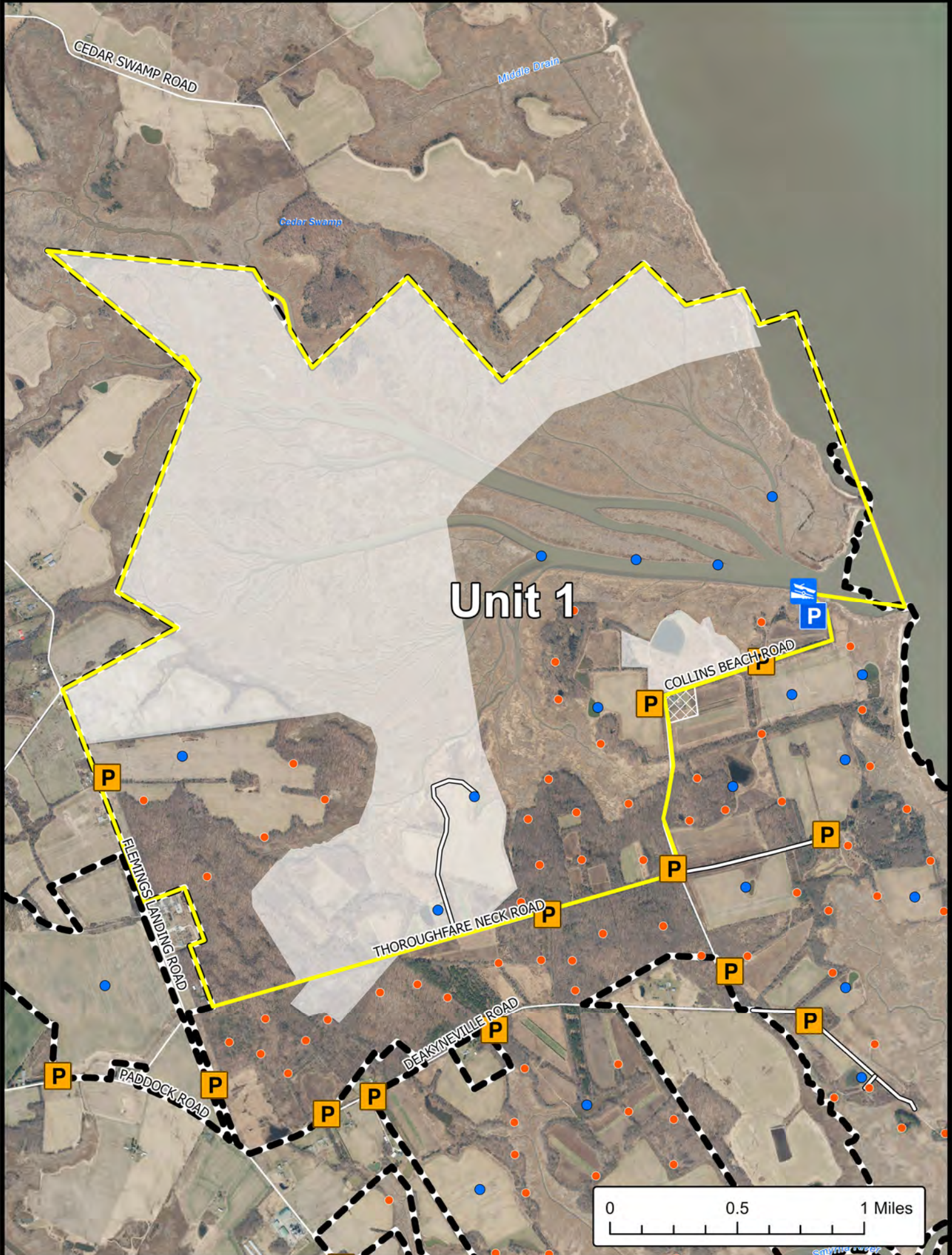


BOUNDARIES SHOWN ARE APPROXIMATE AND SHOULD ONLY BE USED AS A GUIDE



# CEDAR SWAMP WILDLIFE AREA

## Trapping Unit 1



- Wildlife Area
- Refuge
- Safety Zone
- CAP Exempt
- CAP Required
- Maintained Roadway
- Waterfowl Blind/Blind Site
- Deer Stand
- Boat Ramp
- Trapping Unit

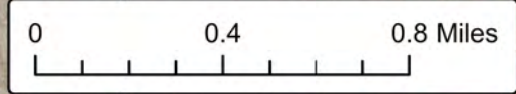


BOUNDARIES SHOWN ARE APPROXIMATE AND SHOULD ONLY BE USED AS A GUIDE



# CEDAR SWAMP WILDLIFE AREA

## Trapping Unit 2



- Wildlife Area
- Maintained Roadway
- Refuge
- Waterfowl Blind/Blind Site
- Safety Zone
- Deer Stand
- CAP Exempt
- Boat Ramp
- CAP Required
- Trapping Unit



BOUNDARIES SHOWN ARE APPROXIMATE AND SHOULD ONLY BE USED AS A GUIDE

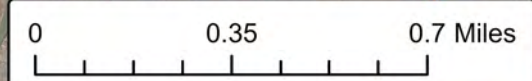




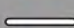
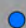



# CEDAR SWAMP WILDLIFE AREA

## Trapping Unit 4



**Unit 4  
Rocks Tract**



-  Wildlife Area
-  CAP Required
-  Maintained Roadway
-  Waterfowl Blind/Blind Site
-  Deer Stand
-  Boat Ramp
-  Trapping Unit

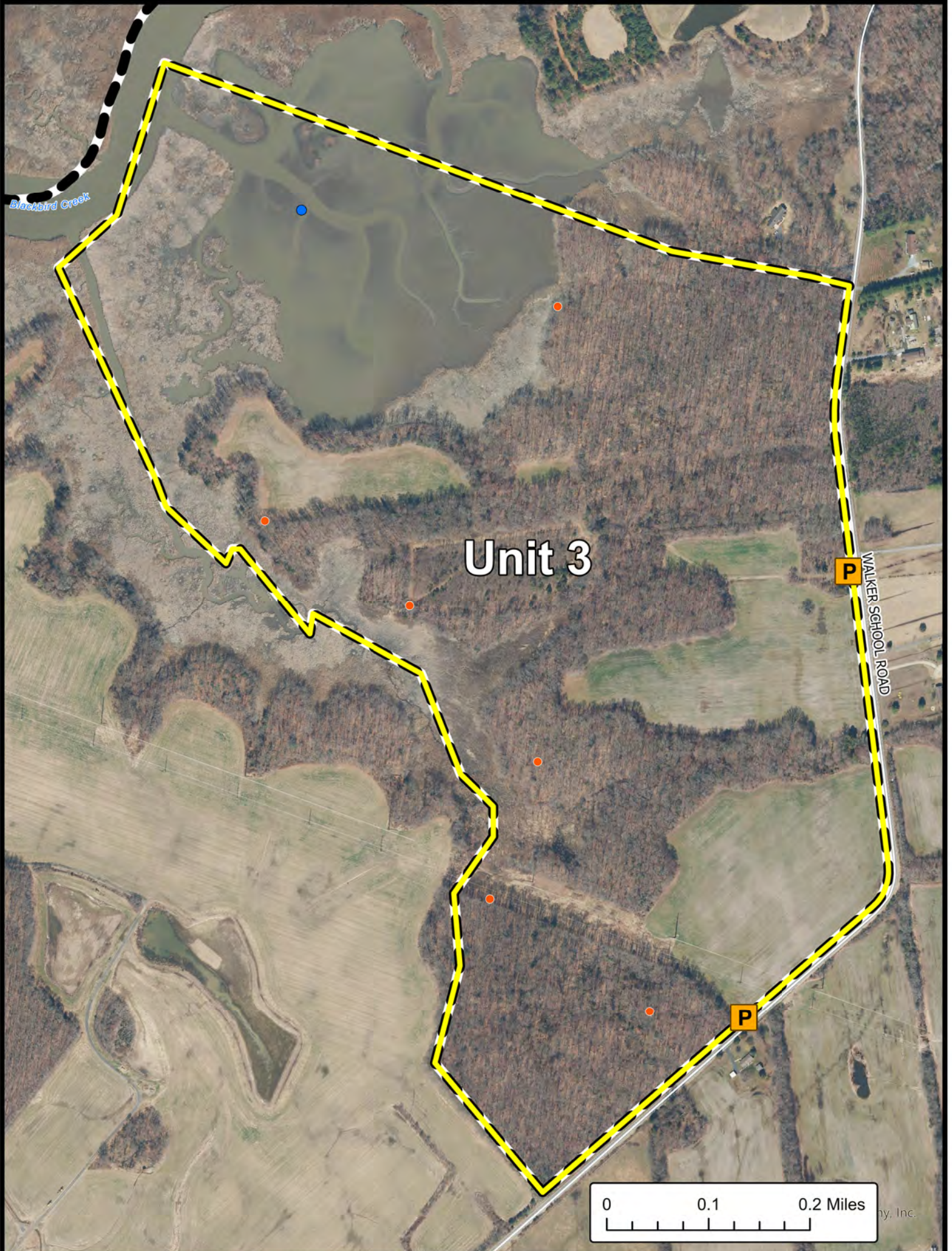


BOUNDARIES SHOWN ARE APPROXIMATE AND SHOULD ONLY BE USED AS A GUIDE



# EAGLES NEST WILDLIFE AREA

## Trapping Unit 3



Wildlife Area



CAP Required



Waterfowl Blind/Blind Site



Deer Stand



Trapping Unit

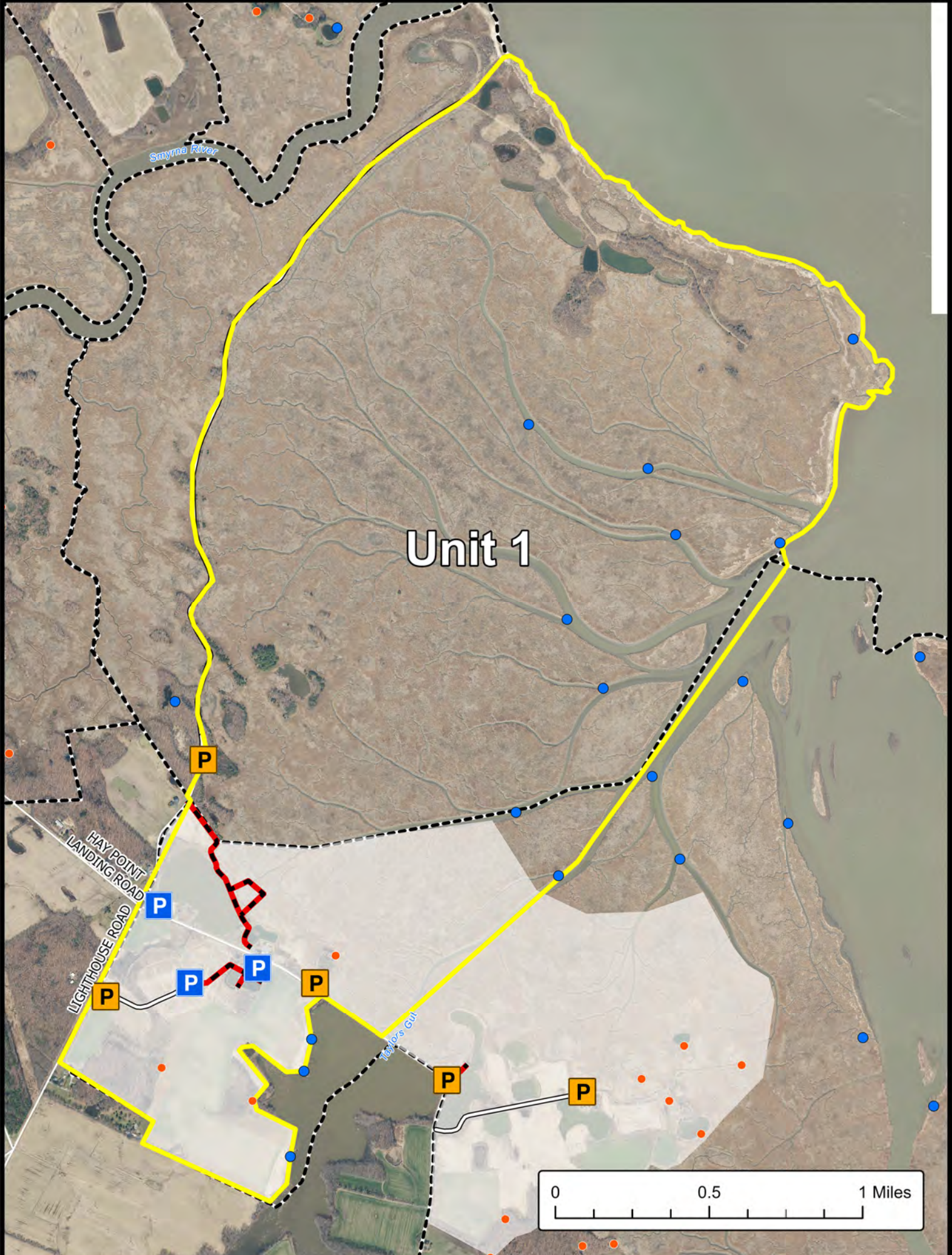


BOUNDARIES SHOWN ARE APPROXIMATE AND SHOULD ONLY BE USED AS A GUIDE

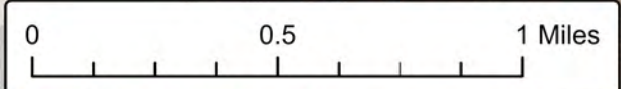


# WOODLAND BEACH WILDLIFE AREA

## Trapping Unit 1



Unit 1



- Wildlife Area
- Refuge
- CAP Exempt
- CAP Required
- Maintained Roadway
- Pedestrian Trail
- Waterfowl Blind/Blind Site
- Deer Stand
- Trapping Unit



BOUNDARIES SHOWN ARE APPROXIMATE AND SHOULD ONLY BE USED AS A GUIDE



# WOODLAND BEACH WILDLIFE AREA

## Trapping Unit 2



Unit 2

- Wildlife Area
- Refuge
- CAP Exempt
- CAP Required
- Maintained Roadway
- Waterfowl Blind/Blind Site
- Deer Stand
- Boat Ramp
- Trapping Unit

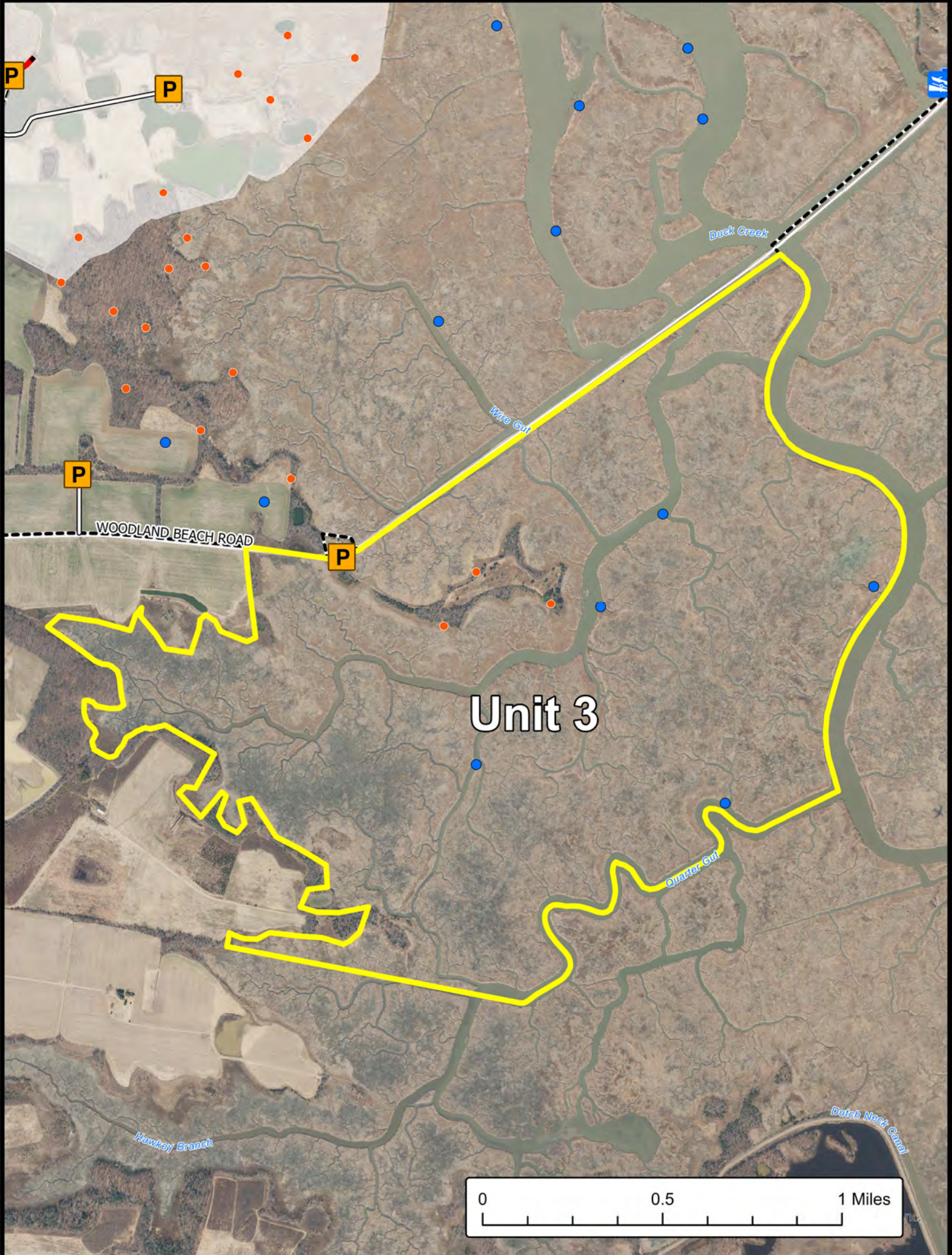


BOUNDARIES SHOWN ARE APPROXIMATE AND SHOULD ONLY BE USED AS A GUIDE



# WOODLAND BEACH WILDLIFE AREA

## Trapping Unit 3



- Wildlife Area
- Refuge
- CAP Exempt
- CAP Required
- Maintained Roadway
- Pedestrian Trail
- Waterfowl Blind/Blind Site
- Deer Stand
- Boat Ramp
- Trapping Unit

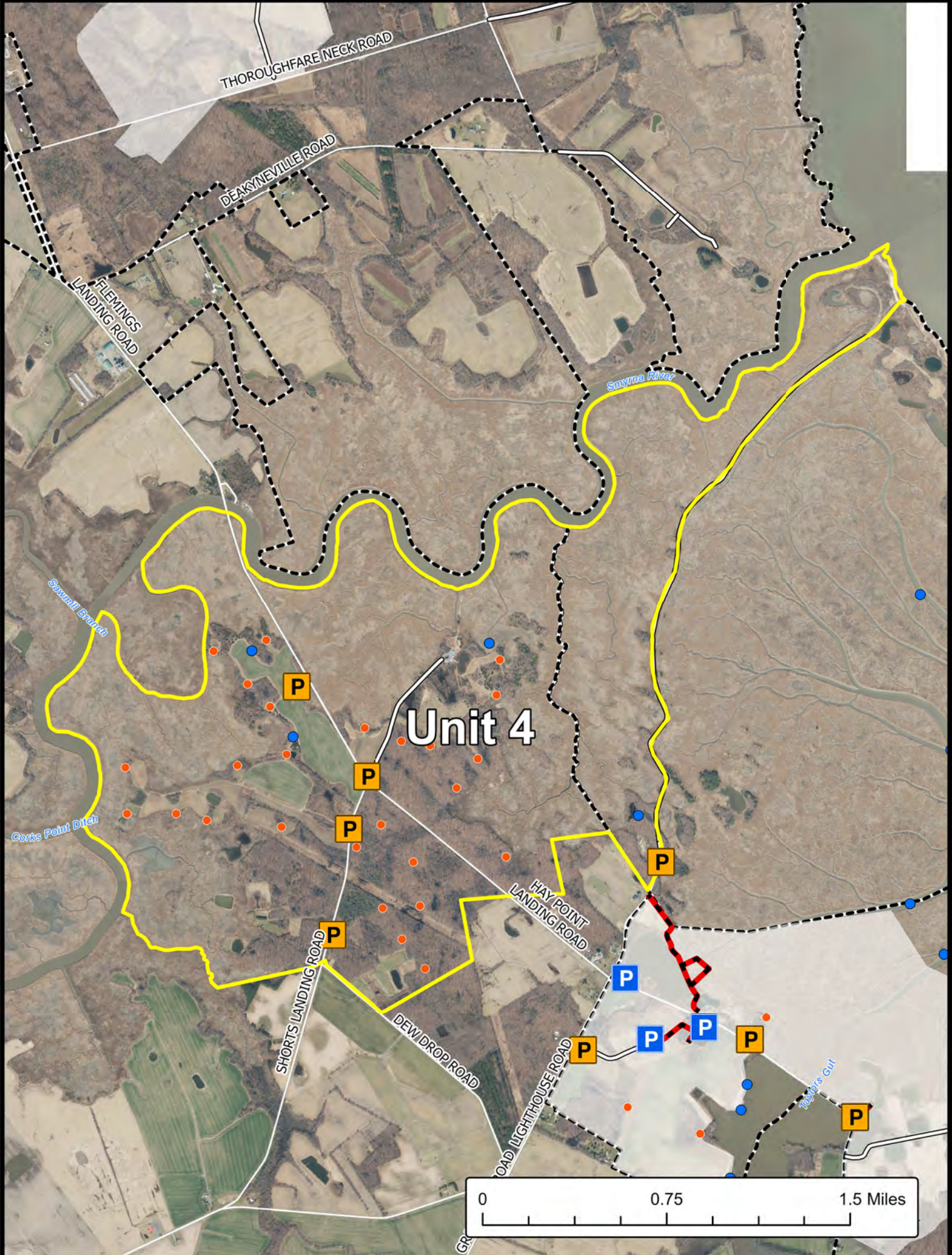


BOUNDARIES SHOWN ARE APPROXIMATE AND SHOULD ONLY BE USED AS A GUIDE



# WOODLAND BEACH WILDLIFE AREA

## Trapping Unit 4



- Wildlife Area
- Maintained Roadway
- Pedestrian Trail
- CAP Exempt
- Waterfowl Blind/Blind Site
- CAP Required
- Deer Stand
- Trapping Unit













BOUNDARIES SHOWN ARE APPROXIMATE AND SHOULD ONLY BE USED AS A GUIDE



# LITTLE CREEK WILDLIFE AREA

## Trapping Units 1 & 2



-  Wildlife Area
-  No Waterfowl Hunting
-  Safety Zone
-  CAP Exempt
-  CAP Required
-  Maintained Roadway
-  Waterfowl Blind/Blind Site
-  Deer Stand
-  Boat Ramp
-  Trapping Unit



BOUNDARIES SHOWN ARE APPROXIMATE AND SHOULD ONLY BE USED AS A GUIDE



# LITTLE CREEK WILDLIFE AREA

## Trapping Unit 3



- Wildlife Area
- No Waterfowl Hunting
- Safety Zone
- Private Property
- CAP Required
- Maintained Roadway
- Waterfowl Blind/Blind Site
- Deer Stand
- Boat Ramp
- Trapping Unit









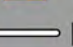
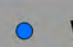


BOUNDARIES SHOWN ARE APPROXIMATE AND SHOULD ONLY BE USED AS A GUIDE



# LITTLE CREEK WILDLIFE AREA

## Trapping Unit 4



-  Wildlife Area
-  Refuge
-  Safety Zone
-  Private Property
-  CAP Exempt
-  CAP Required
-  Maintained Roadway
-  Waterfowl Blind/Blind Site
-  Boat Ramp
-  Trapping Unit

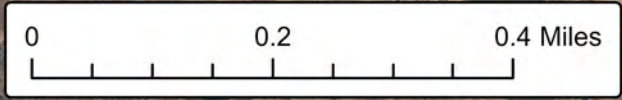
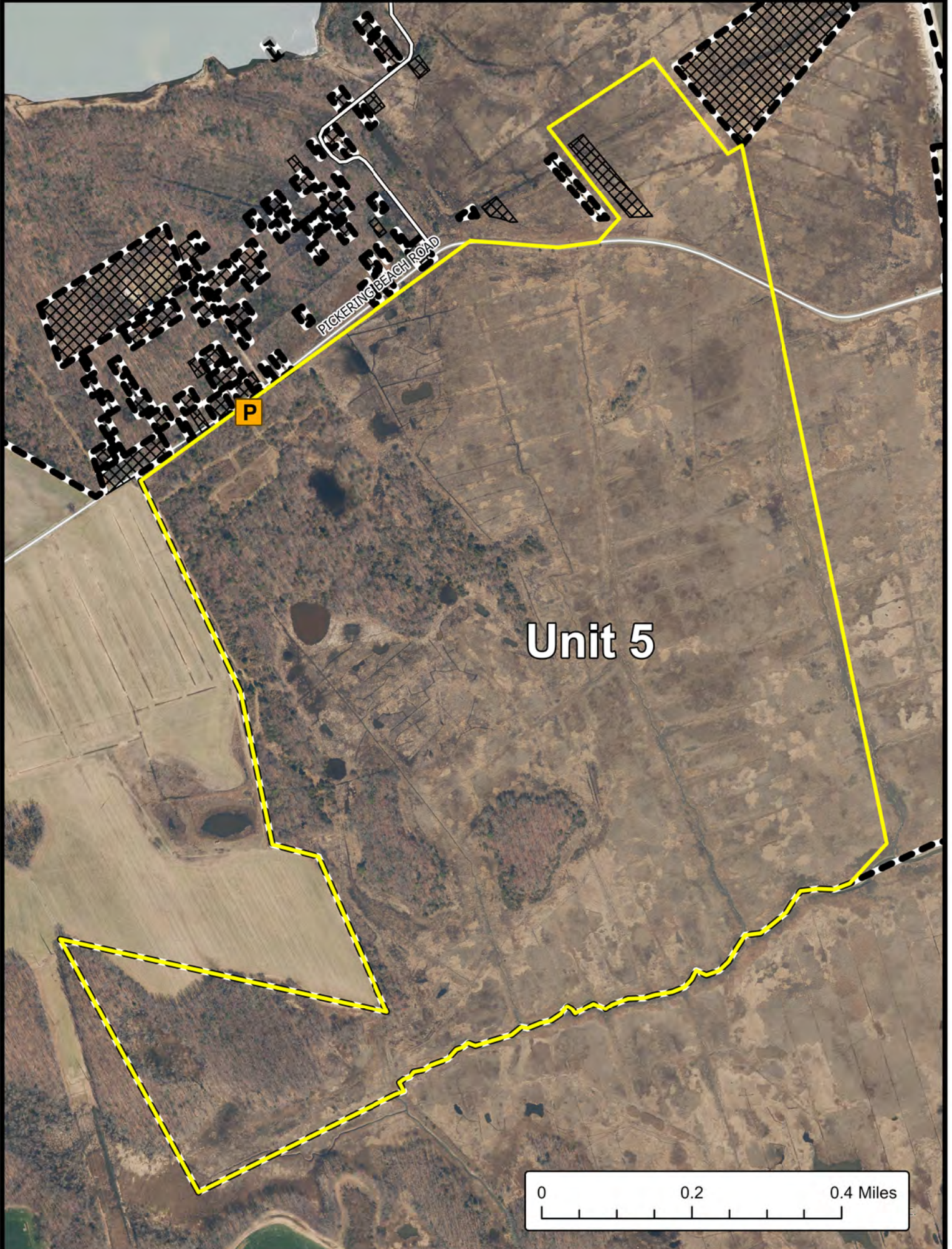


BOUNDARIES SHOWN ARE APPROXIMATE AND SHOULD ONLY BE USED AS A GUIDE



# LITTLE CREEK WILDLIFE AREA

## Trapping Unit 5



- Wildlife Area
- CAP Required
- Refuge
- Private Property
- Trapping Unit
- Maintained Roadway

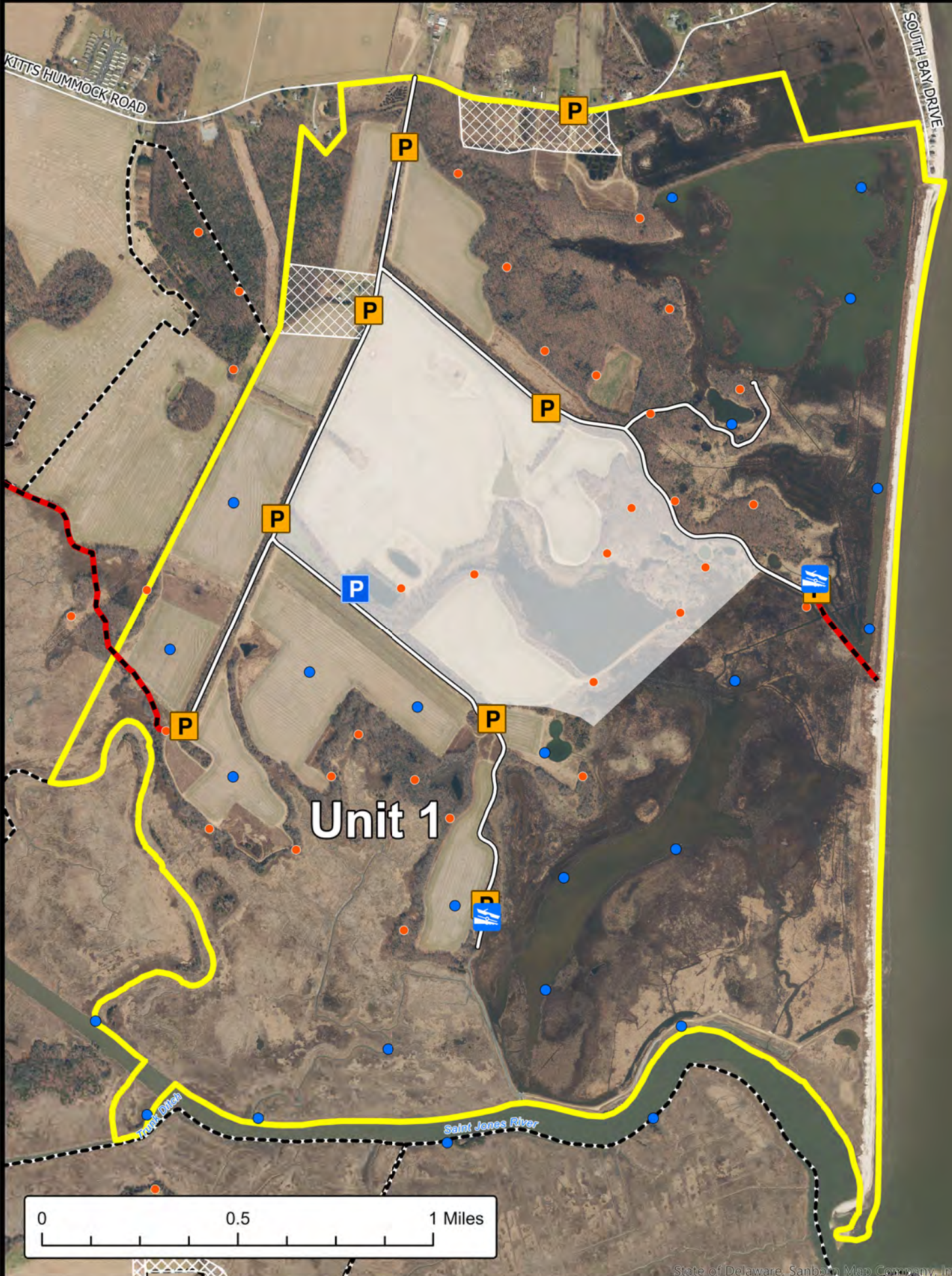


BOUNDARIES SHOWN ARE APPROXIMATE AND SHOULD ONLY BE USED AS A GUIDE



# TED HARVEY CONSERVATION AREA

## Trapping Unit 1



State of Delaware, Sanborn Map Company, Inc.

- Wildlife Area
- Refuge
- Safety Zone
- No Hunting Zone
- CAP Exempt
- CAP Required
- Maintained Roadway
- Pedestrian Trail
- Waterfowl Blind/Blind Site
- Deer Stand
- Boat Ramp
- Trapping Unit



BOUNDARIES SHOWN ARE APPROXIMATE AND SHOULD ONLY BE USED AS A GUIDE



# TED HARVEY CONSERVATION AREA

## Trapping Unit 2



- Wildlife Area
- CAP Exempt
- Waterfowl Blind/Blind Site

- Boat Ramp
- Trapping Unit

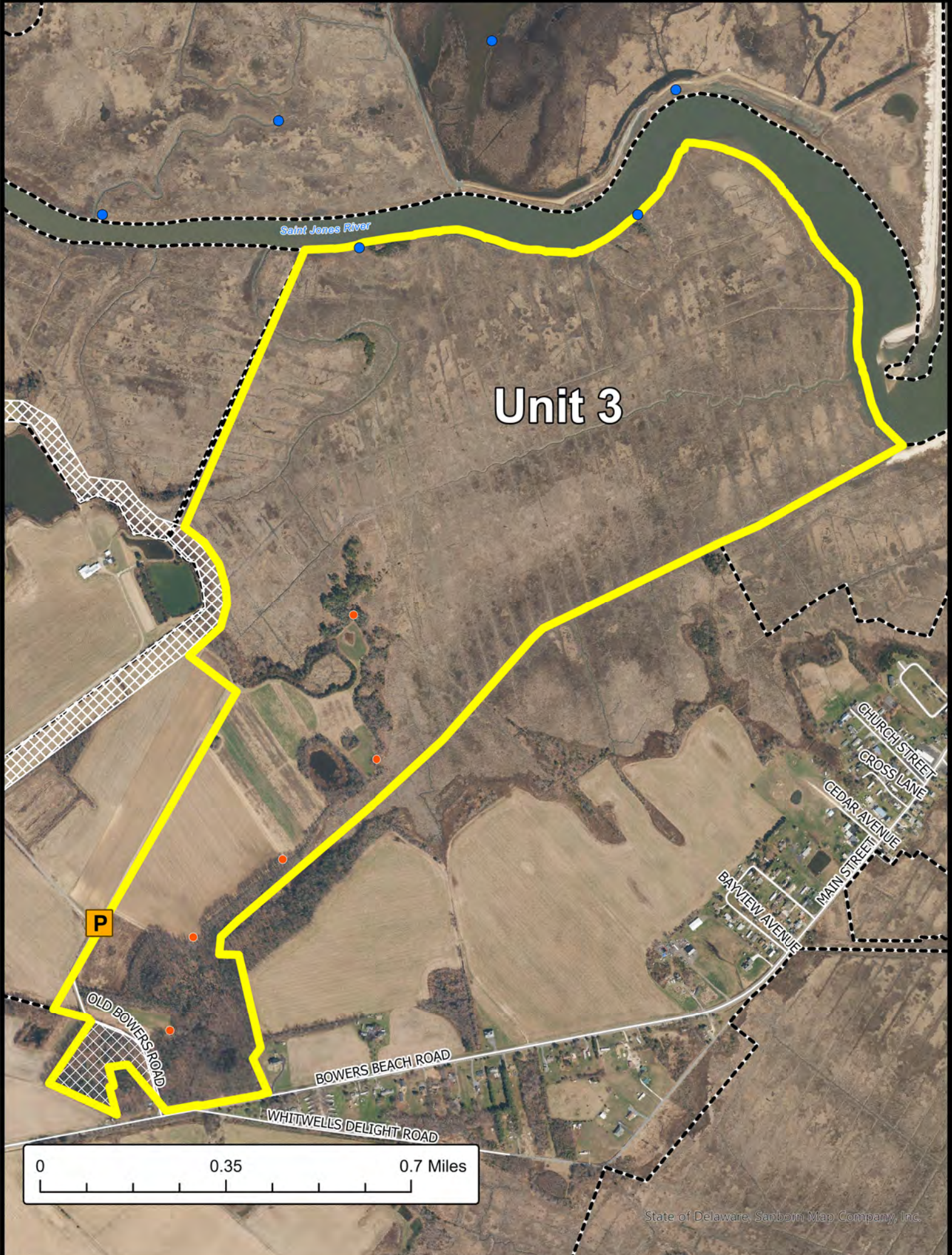


BOUNDARIES SHOWN ARE APPROXIMATE AND SHOULD ONLY BE USED AS A GUIDE










# TED HARVEY CONSERVATION AREA

## Trapping Unit 3



State of Delaware, Sanborn Map Company, Inc.

-  Wildlife Area
-  Safety Zone
-  No Hunting Zone
-  Trapping Unit
-  Waterfowl Blind/Blind Site
-  Deer Stand
-  CAP Required

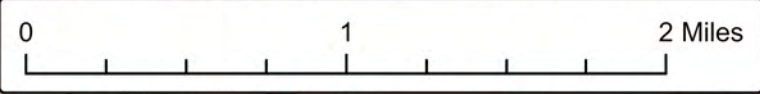
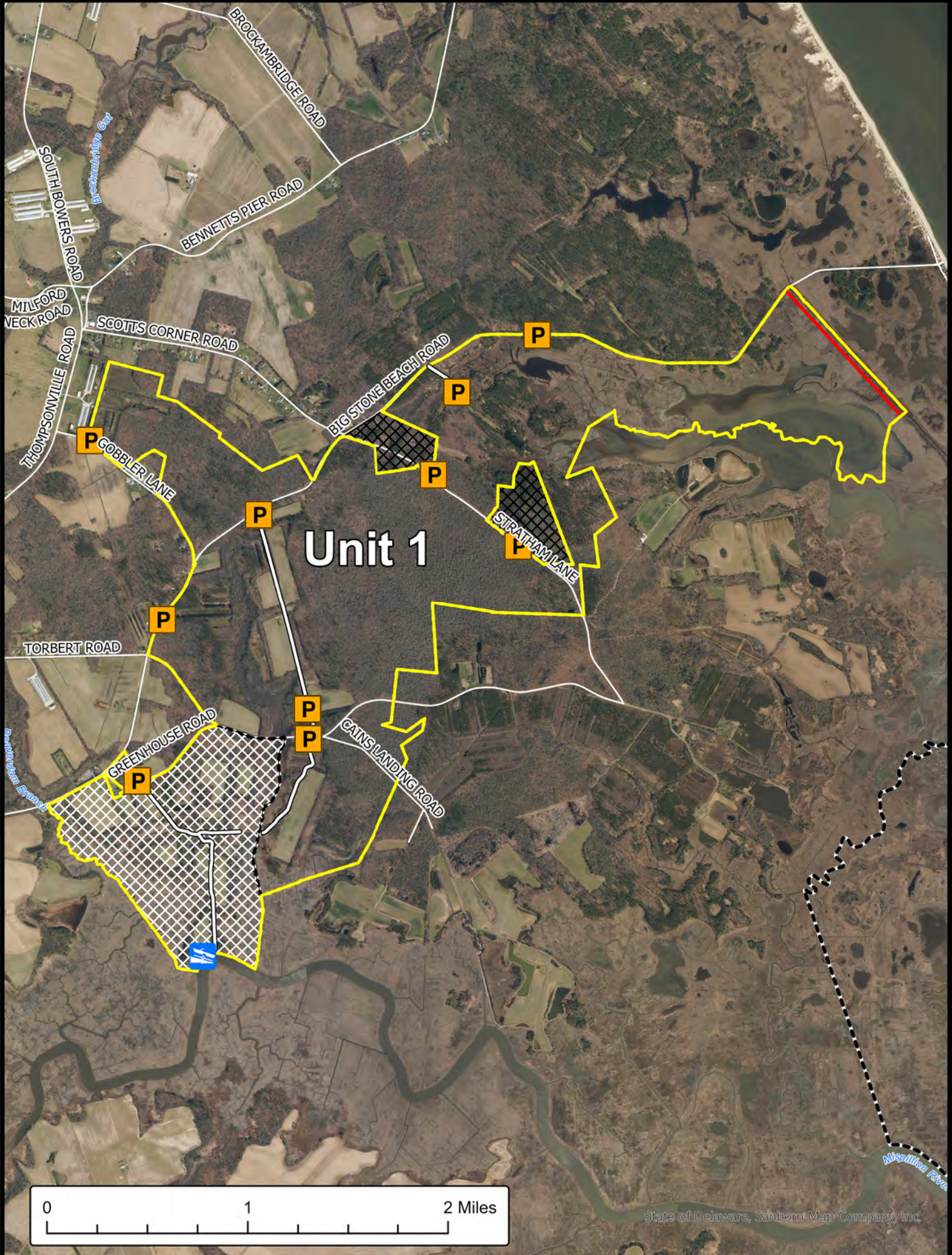


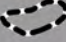




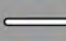


BOUNDARIES SHOWN ARE APPROXIMATE AND SHOULD ONLY BE USED AS A GUIDE



# MILFORD NECK WILDLIFE AREA

## Trapping Unit 1



-  Wildlife Area
-  Dog Training Area
-  No Waterfowl Hunting
-  Private Property
-  CAP Required
-  Maintained Roadway
-  Boat Ramp
-  Trapping Unit

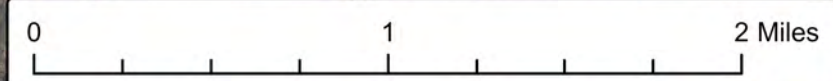
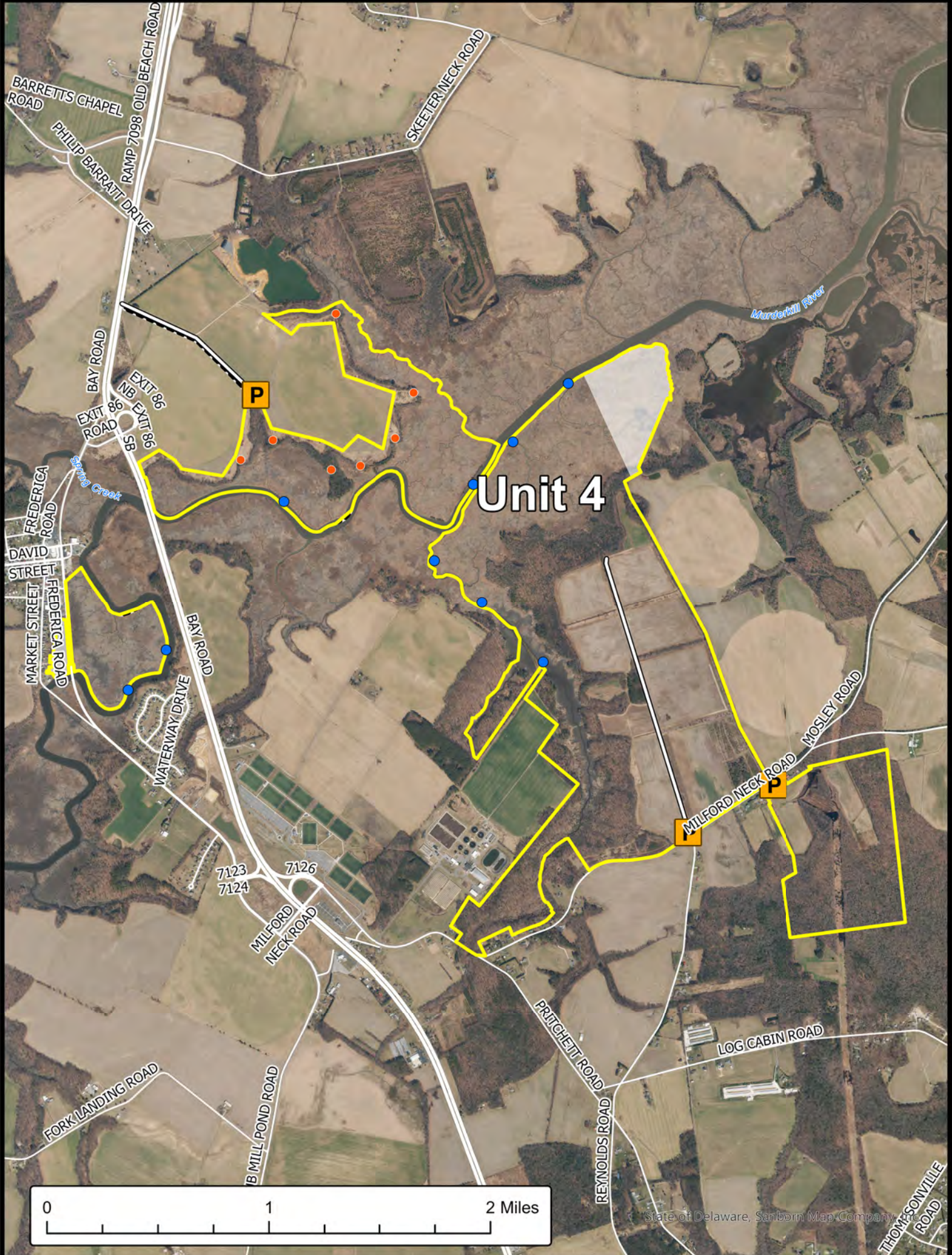


BOUNDARIES SHOWN ARE APPROXIMATE AND SHOULD ONLY BE USED AS A GUIDE



# MILFORD NECK WILDLIFE AREA

## Trapping Unit 4



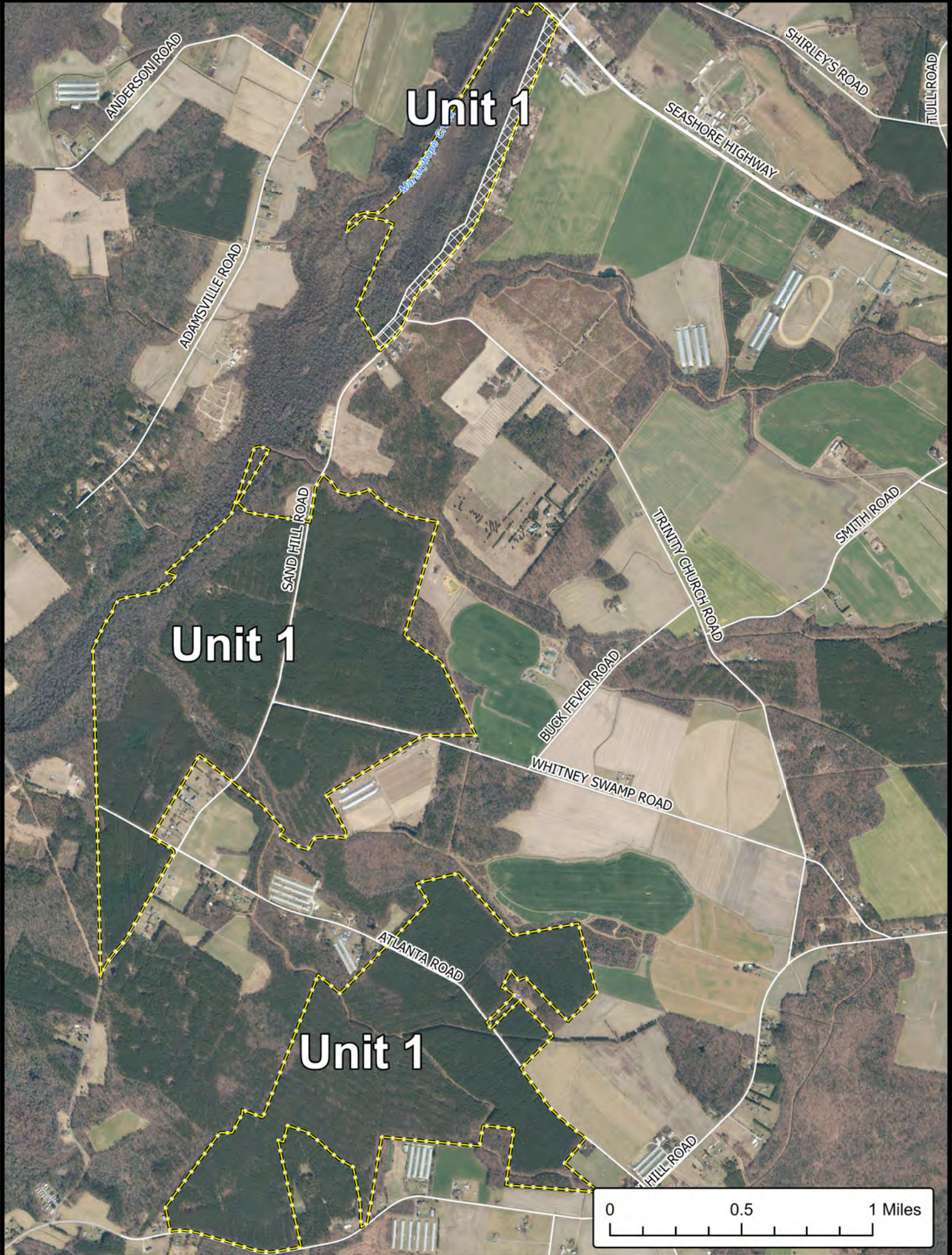
-  Wildlife Area
-  Refuge
-  CAP Required
-  Maintained Roadway
-  Waterfowl Blind/Blind Site
-  Deer Stand
-  Trapping Unit






BOUNDARIES SHOWN ARE APPROXIMATE AND SHOULD ONLY BE USED AS A GUIDE



# MARSHY HOPE WILDLIFE AREA Trapping Unit 1



 Wildlife Area  
  Trapping Unit  
 Safety Zone

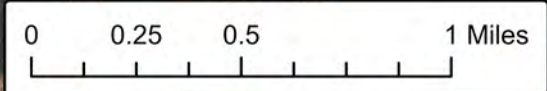


BOUNDARIES SHOWN ARE APPROXIMATE AND SHOULD ONLY BE USED AS A GUIDE

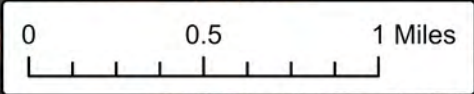
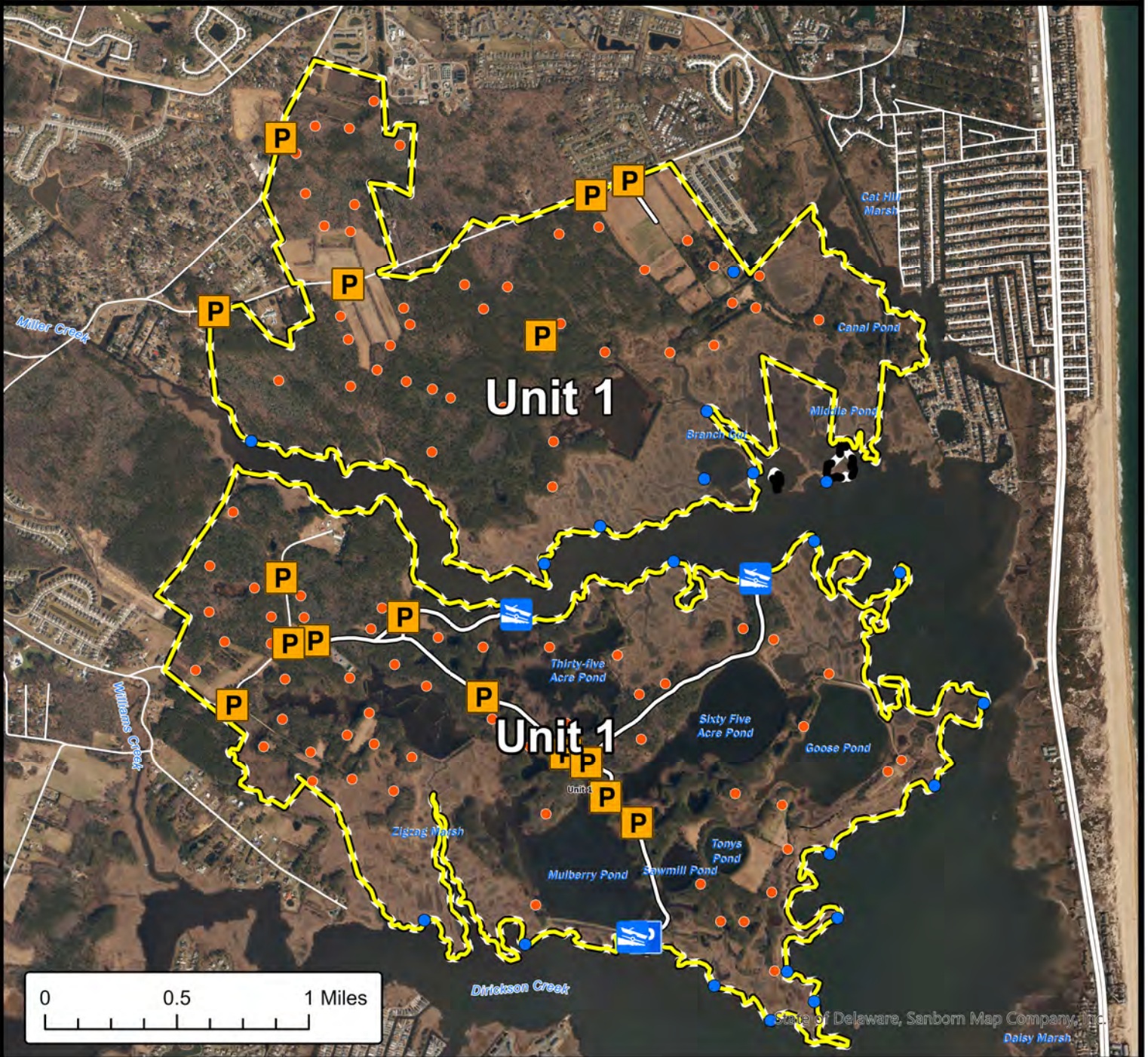


# ASSAWOMAN WILDLIFE AREA

## Trapping Unit Unit 1



State of Delaware, Sanborn Map Company, Inc.



State of Delaware, Sanborn Map Company, Inc.

Wildlife Area

CAP Exempt

CAP Required

Maintained Roadway Trapping Unit

Waterfowl Blind/Blind Site

Deer Stand

Boat Ramp



BOUNDARIES SHOWN ARE APPROXIMATE AND SHOULD ONLY BE USED AS A GUIDE