

NOTES:

1. ALL STRUCTURAL ALUMINUM IS ALLOY 6061-T6, MILL FINISH.
2. ALL JOINTS ARE FULLY WELDED UNLESS NOTED OTHERWISE. FILLER METAL TO BE 5356 SERIES WIRE.
3. ALL HARDWARE IS STAINLESS STEEL, SERIES 304. USE PERMATEX ANTI-SEIZE LUBRICANT OR EQUAL.
4. ALL WOOD FENDERS TO BE S.Y.P. #1 PRESSURE TREATED TO 0.40 PCF ACQ MINIMUM OR EQUAL. ISOLATE WOOD FROM ALUMINUM WITH BITUMINOUS PAINT, CARBOLINE BIT 50 OR EQUAL.
5. FIXED PIER DESIGNED FOR 50 PSF LIVE LOAD, L/180 DEFLECTION.
6. FIXED PIER DIMENSIONS SHOWN ARE NOMINAL FROM ALUMINUM TO ALUMINUM FRAME. FINAL FINISHED DIMENSIONS WILL VARY ACCORDING TO INSTALLED FENDERS & BUMPERS.

NO SITE VISIT OR ENGINEERING TESTING WAS PERFORMED TO DETERMINE FIT FOR USE FOR ANY APPLICATION. DRAWINGS ARE BASED ON CUSTOMER PROVIDED SPECIFICATIONS AND COMMUNICATIONS ONLY. CHANGES MAY BE SUBJECT TO PRICE INCREASE. SIGNATURE INDICATES THAT ALL DESIGN AND PERFORMANCE CRITERIA, ASSUMPTIONS, AND GEOMETRY ARE MET AND SUFFICIENT.

SIGN AND DATE BELOW AND INITIAL ALL SHEETS TO INDICATE ACCEPTANCE AND APPROVAL FOR GATOR DOCK & MARINE TO PROCEED WITH FABRICATION.

CUSTOMER SIGNATURE: _____ DATE: _____



2880 S. MELLONVILLE AVE, SANFORD, FL 32773
800/256-8857 407/323-0190

THE INFORMATION CONTAINED IN THIS DRAWING IS THE SOLE PROPERTY OF GATOR DOCK & MARINE, LLC. ANY REPRODUCTION IN PART OR AS A WHOLE WITHOUT THE WRITTEN PERMISSION OF GATOR DOCK & MARINE, LLC IS PROHIBITED.

RECORD OF REVISIONS

No.	DATE	DESCRIPTION:
	11/8/23	DRAFT
1	11/14/23	FOR APPROVAL
2		

PROJECT NAME:

**INGRAMS POND
BOAT RAMP**

CUSTOMER NAME:

DELAWARE DNREC

CUSTOMER ADDRESS:

89 KINGS HWY
DOVER, DE 19901

PROJECT LOCATION:

MILLSBORO, SUSSEX
COUNTY DE

CMI ORDER NO.:

112947

CUST. PO NO.:

-

	NAME	DATE
DRAWN BY:	EC	11/8/23
CHECKED BY:	JS	11/8/23

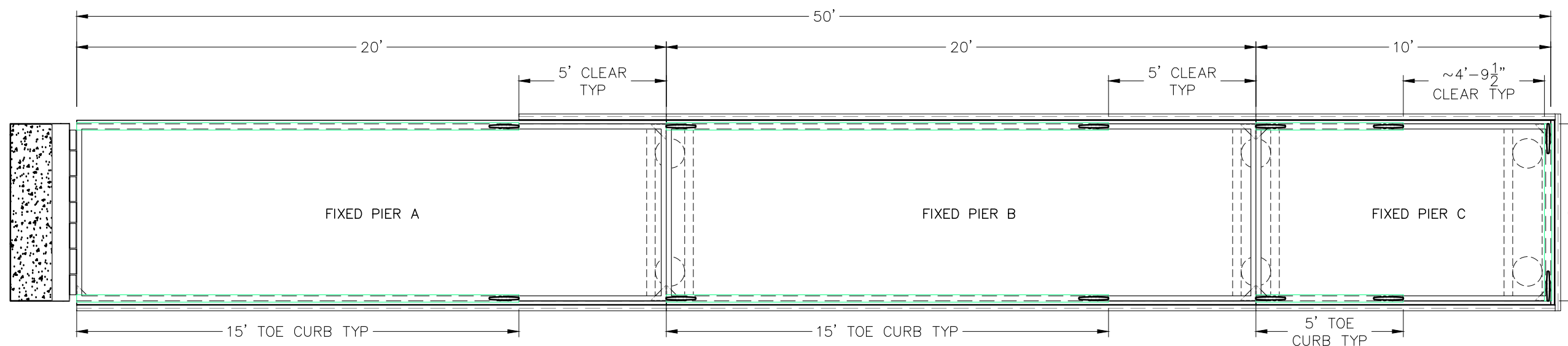
DRAWING NO.:

S-101

OVERALL PIER PLAN

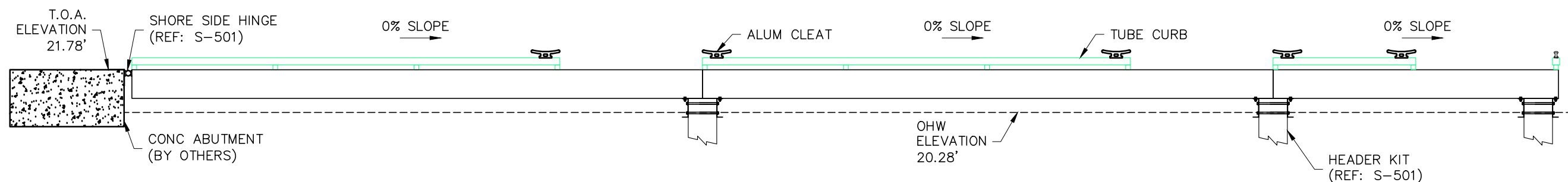
SHEET: 1 of 4

Physical properties are defined by ASTM testing standards, The Aluminum Association Design Manual, and/or standard engineering practice. The values shown are nominal and may vary. The information found in this document is believed to be true and accurate. No warranties of any kind are made as to the suitability of any CMI product for particular applications or the results obtained there from. ShoreGuard, C-Loc, TimberGuard, GeoGuard, Dura Dock, Shore-All, and Gator Gates are registered trademarks of CMI. ArmorWare, Ultra Composite, GatorDocks, and CMI Waterfront Solutions are trademarks of CMI. United States and International numbers 5,145,287; 5,881,508; 6,000,883; 6,033,155; 6,053,666; D420,154; 4,674,921; 4,690,588; 5,292,208; 6,575,667; 7,059,807; 7,056,066; 7,025,539; 1,245,061; © Other patents pending. 2021 CMI LIMITED Co. All Rights Reserved.



OVERALL FIXED PIER PLAN

SCALE: 1/4" = 1'-0"



OVERALL FIXED PIER ELEVATION

SCALE: 1/4" = 1'-0"

RECORD OF REVISIONS

No.	DATE	DESCRIPTION:
	11/8/23	DRAFT
1	11/14/23	FOR APPROVAL
2		

PROJECT NAME:
INGRAMS POND BOAT RAMP

CUSTOMER NAME:
DELAWARE DNREC

CUSTOMER ADDRESS:
89 KINGS HWY
DOVER, DE 19901

PROJECT LOCATION:
MILLSBORO, SUSSEX COUNTY DE

CMI ORDER NO.:
112947

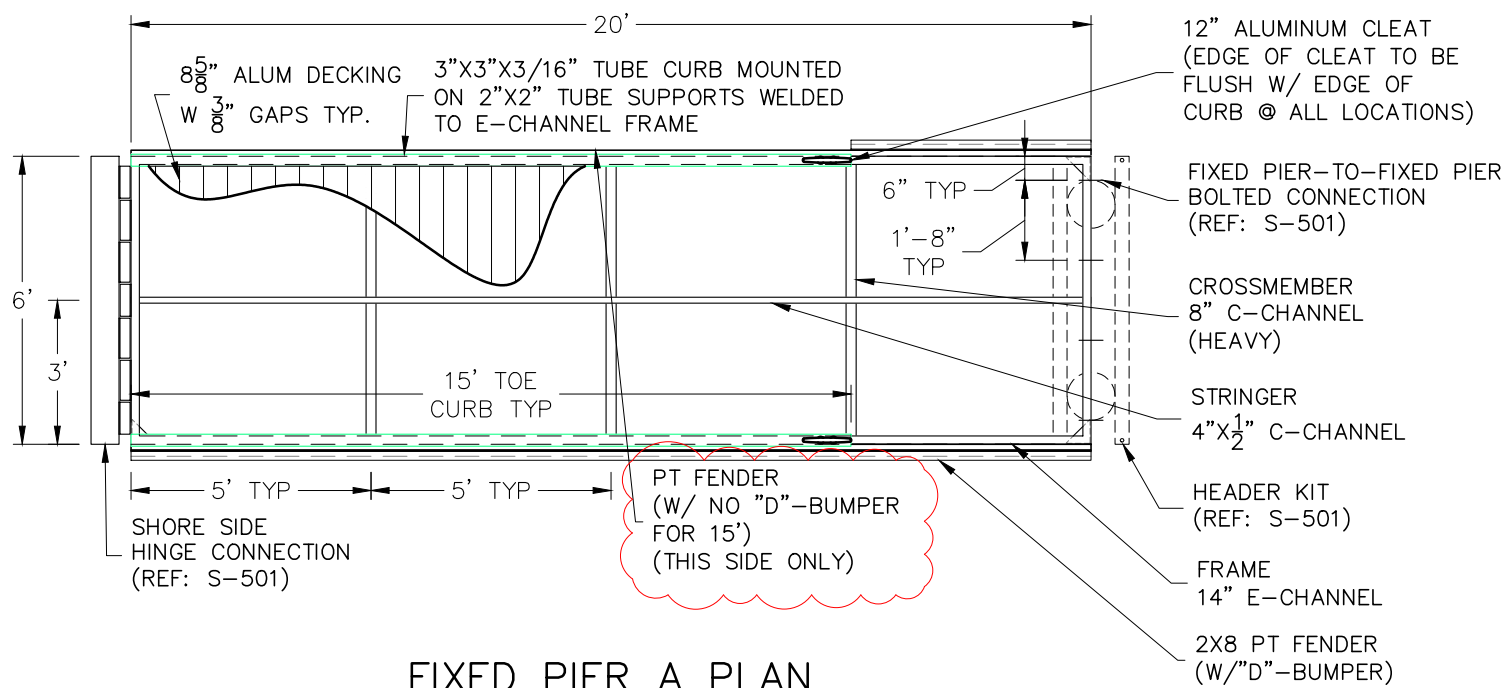
CUST. PO NO.:
-

	NAME	DATE
DRAWN BY:	EC	11/8/23
CHECKED BY:	JS	11/8/23

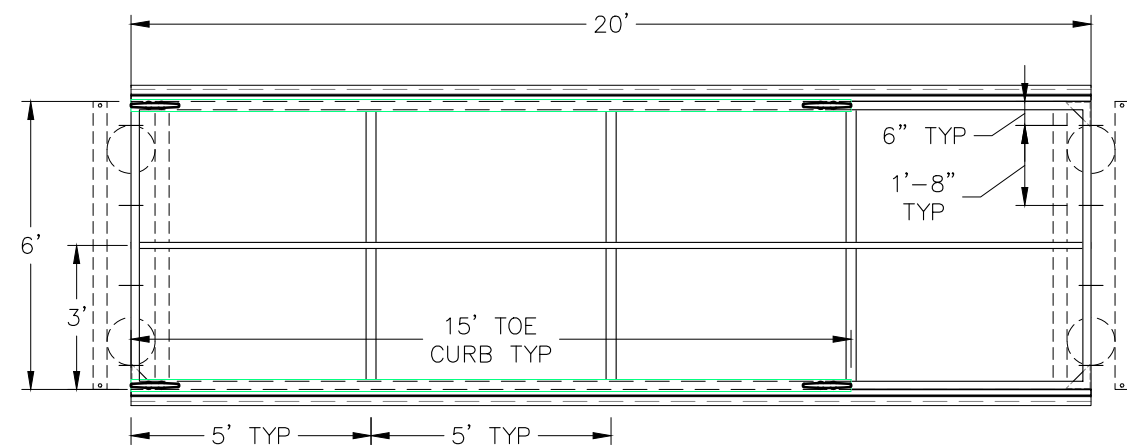
DRAWING NO.:
S-201
FIXED PIER A, B, & C PLAN

SHEET: 2 of 4

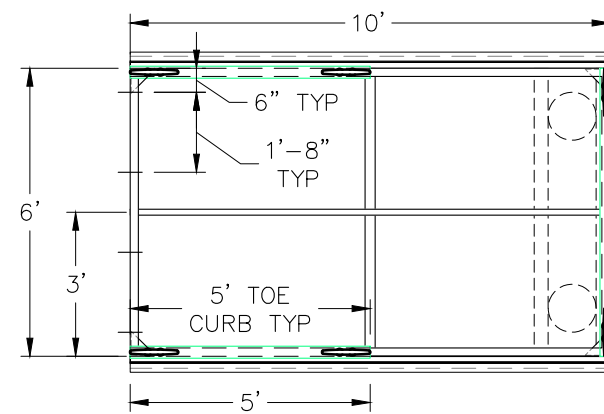
Physical properties are defined by ASTM testing standards, The Aluminum Association Design Manual, and/or standard engineering practice. The values shown are nominal and may vary. The information found in this document is believed to be true and accurate. No warranties of any kind are made as to the suitability of any CMI product for particular applications or the results obtained there from. ShoreGuard, C-Loc, TimberGuard, GeoGuard, Dura Dock, Shore-All, and Gator Gates are registered trademarks of CMI. ArmorWare, Ultra Composite, GatorDocks, and CMI Waterfront Solutions are trademarks of CMI. United States and International numbers 5,145,287; 5,891,508; 6,000,883; 6,033,155; 6,053,666; D420,154; 4,674,921; 4,690,588; 5,292,208; 6,575,667; 7,059,807; 7,056,066; 7,025,539; 1,245,061; © Other patents pending. 2021 CMI LIMITED Co. All Rights Reserved.



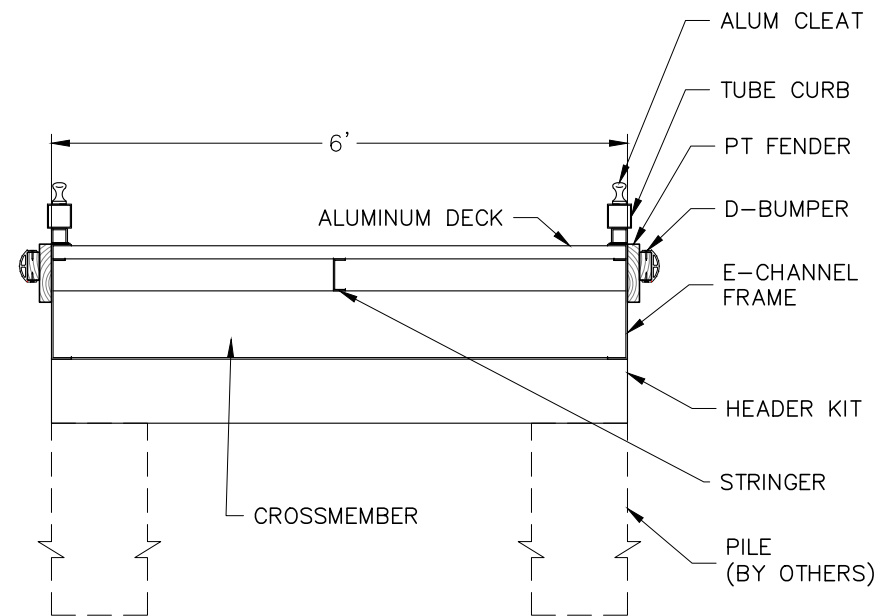
FIXED PIER A PLAN
SCALE: 1/4" = 1'-0"
APPROX. WEIGHT = 1000 lbs



FIXED PIER B PLAN
SCALE: 1/4" = 1'-0"
APPROX. WEIGHT = 1000 lbs



FIXED PIER C PLAN
SCALE: 1/4" = 1'-0"
APPROX. WEIGHT = 550 lbs



FIXED PIER SECTION TYP
1/2" = 1'-0"

CUSTOMER INITIAL

RECORD OF REVISIONS

No.	DATE	DESCRIPTION:
	11/8/23	DRAFT
1	11/14/23	FOR APPROVAL
2		

PROJECT NAME:
**INGRAMS POND
BOAT RAMP**

CUSTOMER NAME:
DELAWARE DNREC

CUSTOMER ADDRESS:
89 KINGS HWY
DOVER, DE 19901

PROJECT LOCATION:
MILLSBORO, SUSSEX
COUNTY DE

CMI ORDER NO.:
112947

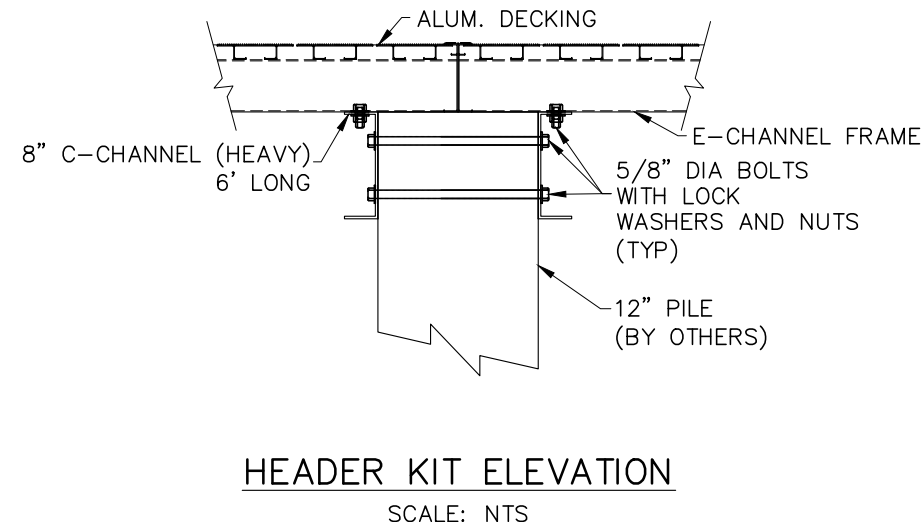
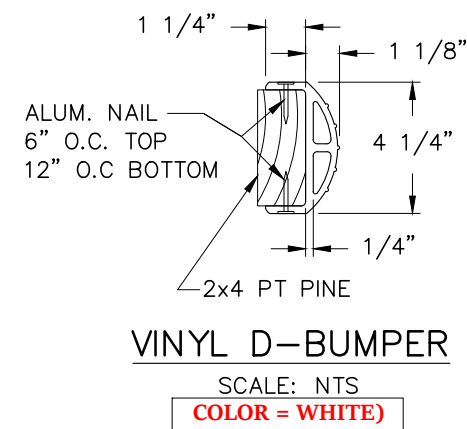
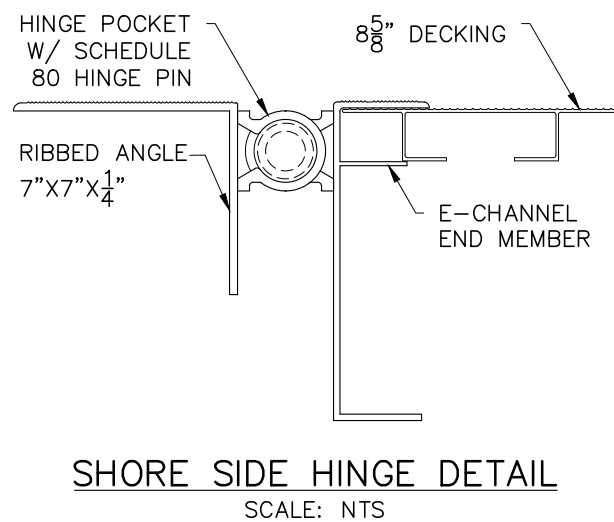
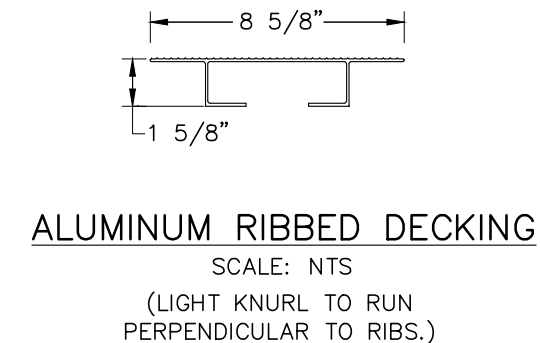
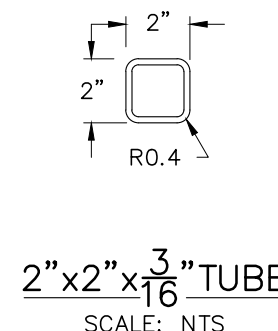
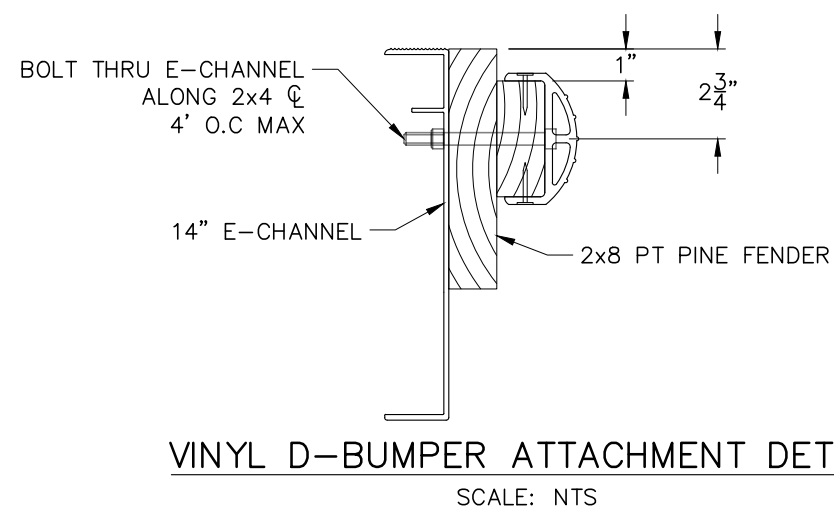
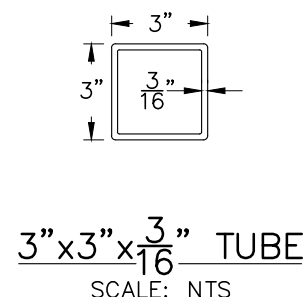
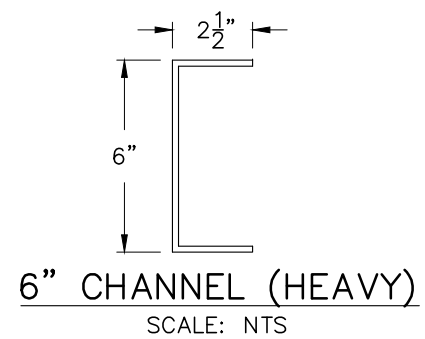
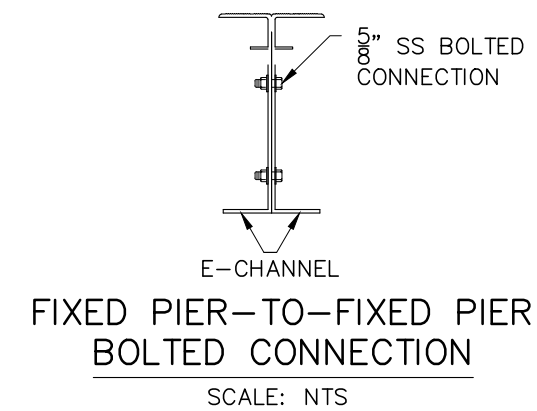
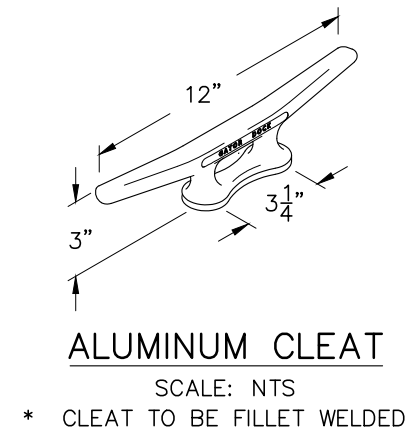
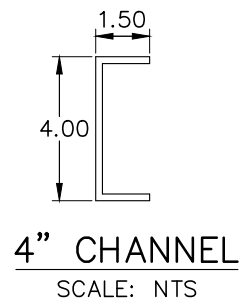
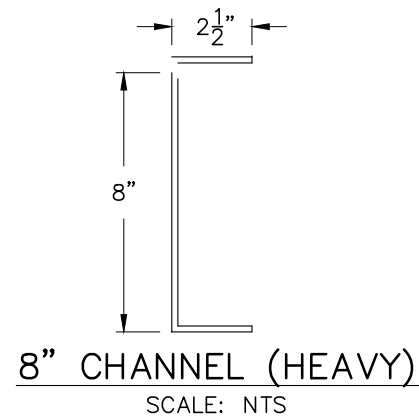
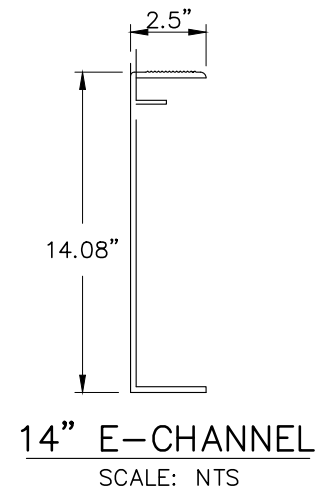
CUST. PO NO.:
-

	NAME	DATE
DRAWN BY:	EC	11/8/23
CHECKED BY:	JS	11/8/23

DRAWING NO.:
S-501
COMPONENT DETAIL

SHEET: 3 of 4

Physical properties are defined by ASTM testing standards, The Aluminum Association Design Manual, and/or standard engineering practice. The values shown are nominal and may vary. The information found in this document is believed to be true and accurate. No warranties of any kind are made as to the suitability of any CMI product for particular applications or the results obtained there from. ShoreGuard, C-Loc, TimberGuard, GeoGuard, Dura Dock, Shore-All, and Gator Gates are registered trademarks of CMI. ArmorWare, Ultra Composite, GatorDocks, and CMI Waterfront Solutions are trademarks of CMI. United States and International numbers 5,145,287; 5,881,508; 6,000,883; 6,033,155; 6,053,666; D420,154; 4,674,921; 4,690,588; 5,292,208; 6,575,667; 7,059,807; 7,056,066; 7,025,539; 1,245,061; © Other patents pending. 2021 CMI LIMITED Co. All Rights Reserved.



* CUSTOMER RESPONSIBLE FOR DESIGN AND SUPPLY OF HARDWARE TO CONNECT GANGWAY TO ABUTMENT.

ALUMINUM CHANNELS COATED WITH ISOLATING MATERIAL - BITUMINOUS TAPE OR PAINT. (BY OTHERS)
(HEADER CHANNELS FIELD LOCATED AND HOLES FIELD DRILLED BY OTHERS)

CUSTOMER INITIAL

RECORD OF REVISIONS

No.	DATE	DESCRIPTION:
	11/8/23	DRAFT
1	11/14/23	FOR APPROVAL
2		

PROJECT NAME:

**INGRAMS POND
BOAT RAMP**

CUSTOMER NAME:

DELAWARE DNREC

CUSTOMER ADDRESS:

89 KINGS HWY
DOVER, DE 19901

PROJECT LOCATION:

MILLSBORO, SUSSEX
COUNTY DE

CMI ORDER NO.:

112947

CUST. PO NO.:

—

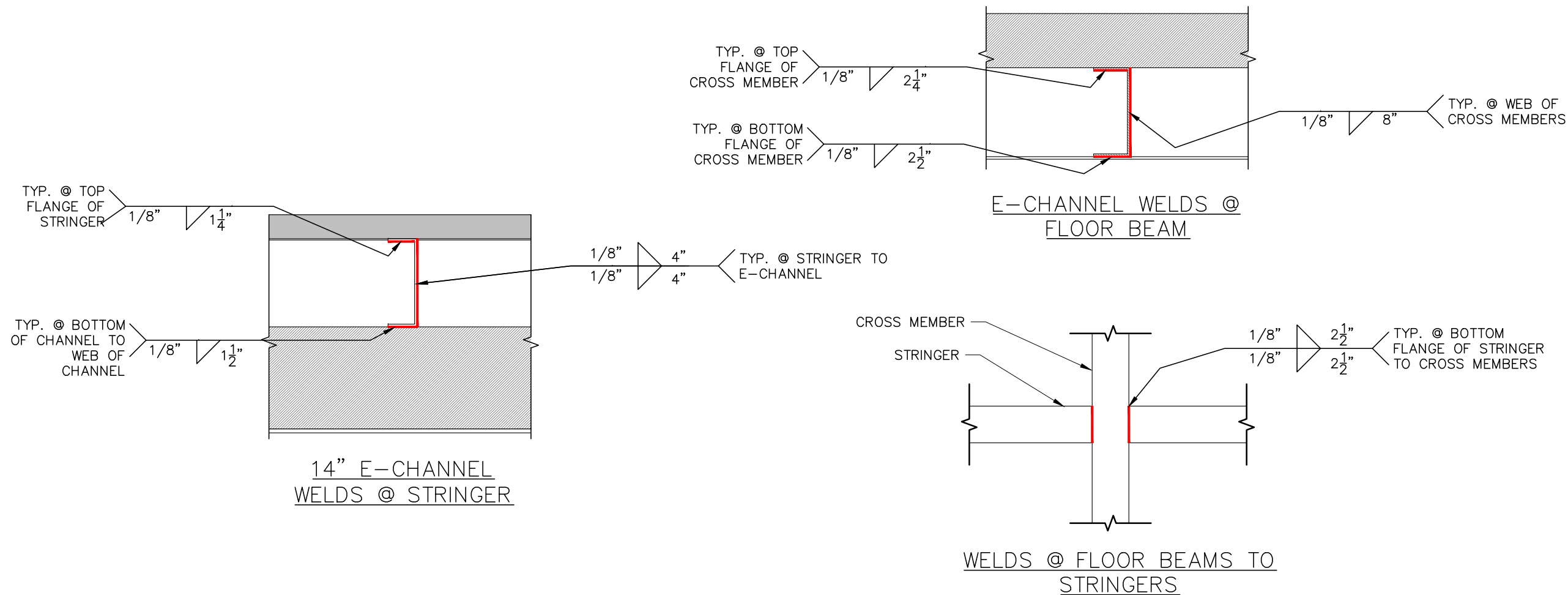
	NAME	DATE
DRAWN BY:	EC	11/8/23
CHECKED BY:	JS	11/8/23

DRAWING NO.:

S-602
WELD DETAILS

SHEET: 4 of 4

Physical properties are defined by ASTM testing standards, The Aluminum Association Design Manual, and/or standard engineering practice. The values shown are nominal and may vary. The information found in this document is believed to be true and accurate. No warranties of any kind are made as to the suitability of any CMI product for particular applications or the results obtained there from. ShoreGuard, C-Loc, TimberGuard, GeoGuard, Dura Dock, Shore-All, and Gator Gates are registered trademarks of CMI. ArmorWare, Ultra Composite, GatorDocks, and CMI Waterfront Solutions are trademarks of CMI. United States and International numbers 5,145,287; 5,881,508; 6,000,883; 6,033,155; 6,053,666; D420,154; 4,674,921; 4,690,588; 5,292,208; 6,575,667; 7,059,807; 7,056,066; 7,025,539; 1,245,061; © Other patents pending. 2021 CMI LIMITED Co. All Rights Reserved.



NOTE:
REFER TO SHOP STANDARDS FOR
ALL WELDS ON HINGES

CUSTOMER
INITIAL