

## Addendum No. 3

Date: March 26, 2018

Project: Caesar Rodney High School  
 Sitework and Athletic Fields  
 Contract N. SRS-18003-CRHSsitework

The work herein shall be considered part of the bid documents for the referenced project and carried out in accordance with the following supplemental instructions issued in accordance with the Contract Documents without change in Contract Sum or Contract Time. Acknowledge receipt of addendum on the bid form as indicated.

### RFI Responses

- Question:** The foundation plan shows a spread footing every 6'. With the concrete footing design you show they would only need to be on an 18' grid.  
**Answer:** The structural system, including the foundation, for New Bleacher Type 2 shown on sheet A3.1 shall be design-build by the bleacher contractor.

### Changes to Drawings

- A2.0 – SITE DEMOLITION PLAN  
 Revised scope / area of work for Site Demolition Key Note SD-12.  
 See attached sketch SK-A.04.
- A3.0 – SITE PLAN  
 Expanded scope / area of work for detail reference 5/A3.3.  
 Added detail reference 4/A3.3, 1/A3.4, 2/A3.4, 1/A3.5, 2/A3.5 and 1/A3.6.  
 See attached sketches SK-A.05 and SK-A.06.
- A3.1 – BLEACHER PLANS, SECTIONS AND DETAILS  
 Revise BLEACHER SCHEDULE to include detail reference numbers for the main stadium home side bleacher and the main stadium visitor side bleacher as indicated below.

BLEACHER SCHEDULE			
LOCATION	QTY	TYPE	NOTES
BASEBALL	2	TYPE-1	
SOFTBALL	1	TYPE-1	
AUX. STADIUM	1	TYPE-2	
MAIN HOME SIDE	N/A	EXIST.	MODIFY. SEE 1&2/A3.4.
MAIN VISITOR SIDE	N/A	EXIST.	FENCE ONLY. SEE 1/A3.1.

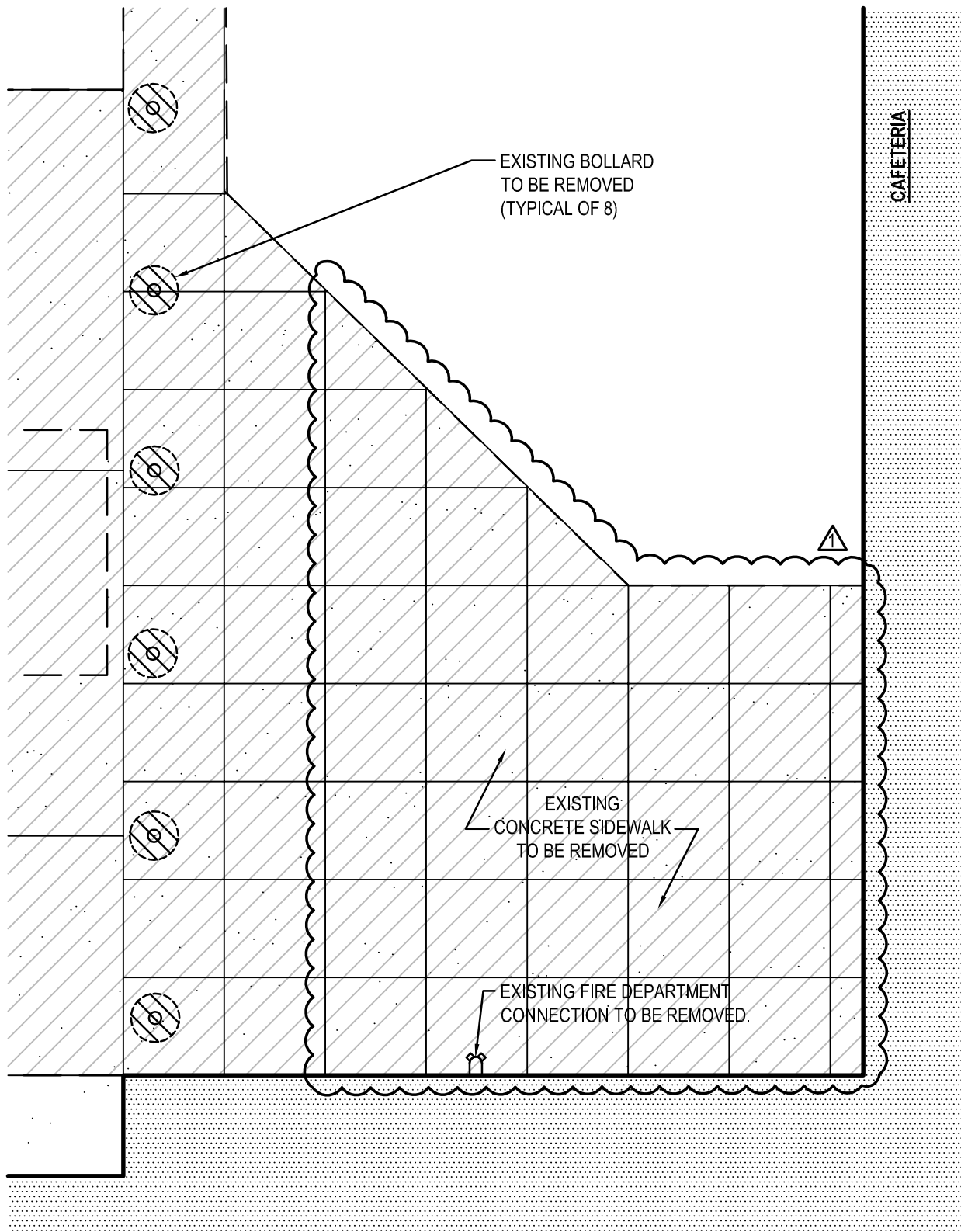
- A3.3 – ENLARGED SITE PLANS AND DETAILS  
 Revise 4/A3.3 STORAGE ROOM – SITE DEMOLITION PLAN to expand area of sidewalk to be demolished.  
 See attached sketch SK-A.01.

5. A3.3 – ENLARGED SITE PLANS AND DETAILS  
Revise 5/A3.3 STORAGE ROOM – SITE CONSTRUCTION PLAN to expand area of new concrete sidewalk.  
See attached sketch SK-A.02.
6. A3.4 – ENLARGED SITE PLANS AND DETAILS  
Revise 2/A3.4 MAIN STADIUM BLEACHER MODIFICATION – CONSTRUCTION PLAN to indicate turndown slab at edge of concrete slab at retaining wall condition.  
See attached sketch SK-A.03.
7. A3.5 – WALKWAY PLAN AND DETAILS  
Added details 6, 7, 8, 9 and 10. Revised CONSTRUCTION KEY NOTE LEGEND. Added dimensions and notes at plan 1 and plan 2.  
See attached revised drawing A3.5.
8. A3.6 – LANDSCAPE PLAN AND DETAILS  
Added sheet A3.6.  
See attached drawing A3.6.
9. E9.3 – ELECTRICAL SINGLE LINE DIAGRAM AND PANEL SCHEDULES  
Add detail 2/E9.3 ELECTRICAL SITE PLAN – STORAGE BUILDING to show power to grinder pump.  
See attached sketch SK-E.01.
10. E9.3 – ELECTRICAL SINGLE LINE DIAGRAM AND PANEL SCHEDULES  
Revise NEW PANEL PL1S to show power to grinder pump.  
See attached sketch SK-E.01.

#### **Changes to Specifications**

11. 13 12 50 – ALUMINUM BLEACHERS  
Revise paragraph 2.1 MANUFACTURERS to include Southern Bleacher Company, Inc. as an acceptable manufacturer.
12. 13 26 14 – PERMANENT GRANDSTANDS  
Revise paragraph 2.1 MANUFACTURERS to include Southern Bleacher Company, Inc. as an acceptable manufacturer.

**End**



4  
3.3

# STORAGE ROOM ADDITION - SITE DEMOLITION PLAN

SCALE: 1/8" = 1'-0"

03/26/18

A3.3

DATE

SHEET NO.

16061

SK-A.01

PROJECT NO.

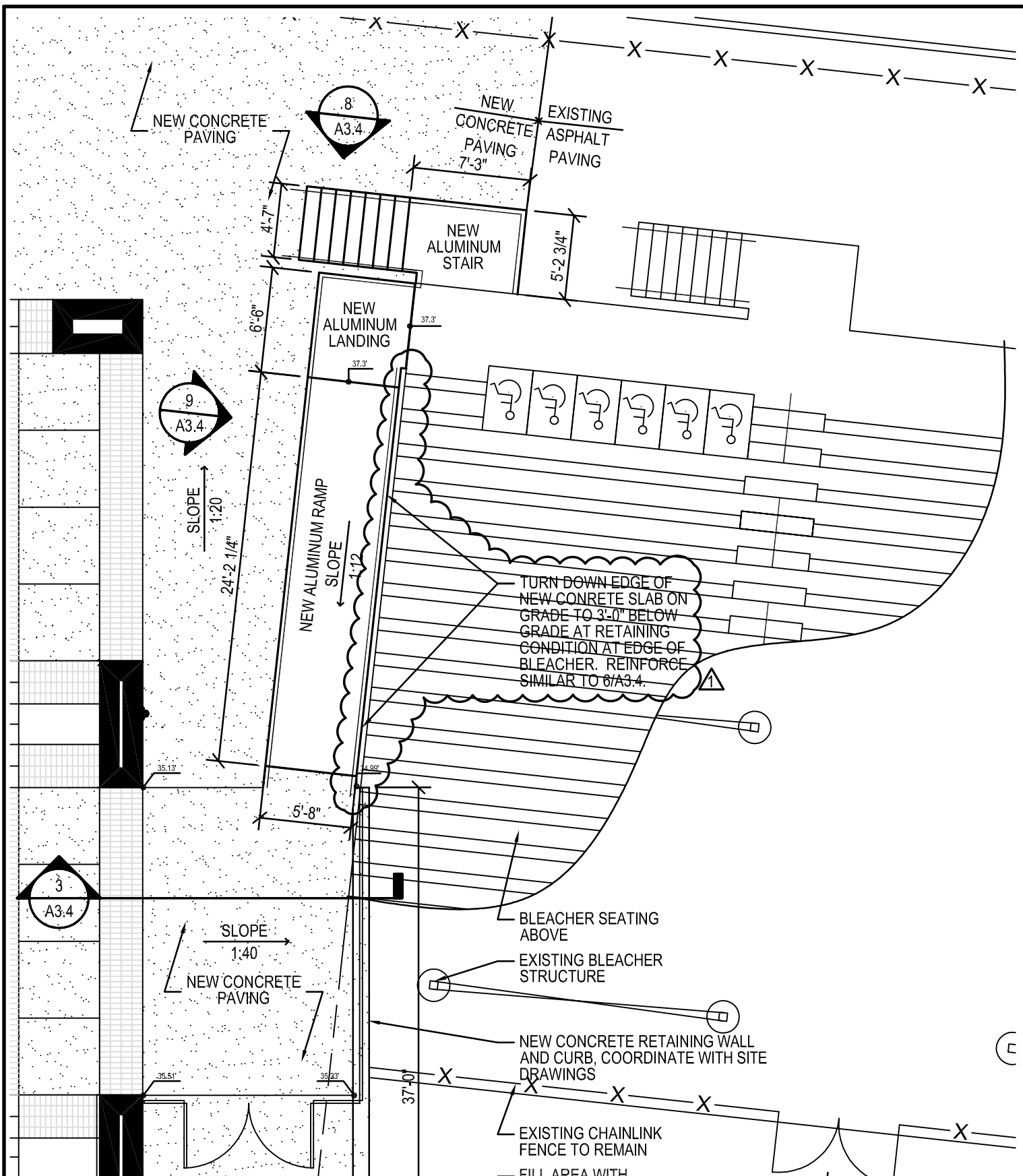
CAESAR RODNEY SCHOOL DISTRICT  
CAESAR RODNEY HIGH SCHOOL  
ATHLETIC FIELDS AND SITE CONSTRUCTION

239 OLD NORTH ROAD  
CAMDEN, DE 19934

**STUDIO JAED**  
ARCHITECTS ■ ENGINEERS ■ FACILITIES SOLUTIONS  
CORPORATE HEADQUARTERS  
2500 WINDLE HILL ROAD, STE. 110  
BRAND, DE 19001  
P: (302) 853-4652 F: (302) 853-4623  
Website: www.studiojaed.com E-Mail: info@studiojaed.com

REVISIONS:  
△ ADDENDUM 3





# MAIN STADIUM BLEACHER MODIFICATION - CONST. PLAN

SCALE: 1/8" = 1'-0"

03/26/18

A3.4

DATE

SHEET NO.

16061

SK-A.03

PROJECT NO.

CAESAR RODNEY SCHOOL DISTRICT  
CAESAR RODNEY HIGH SCHOOL  
ATHLETIC FIELDS AND SITE CONSTRUCTION

239 OLD NORTH ROAD  
CAMDEN, DE 19934



**STUDIO JAED**  
ARCHITECTS ■ ENGINEERS ■ FACILITIES SOLUTIONS

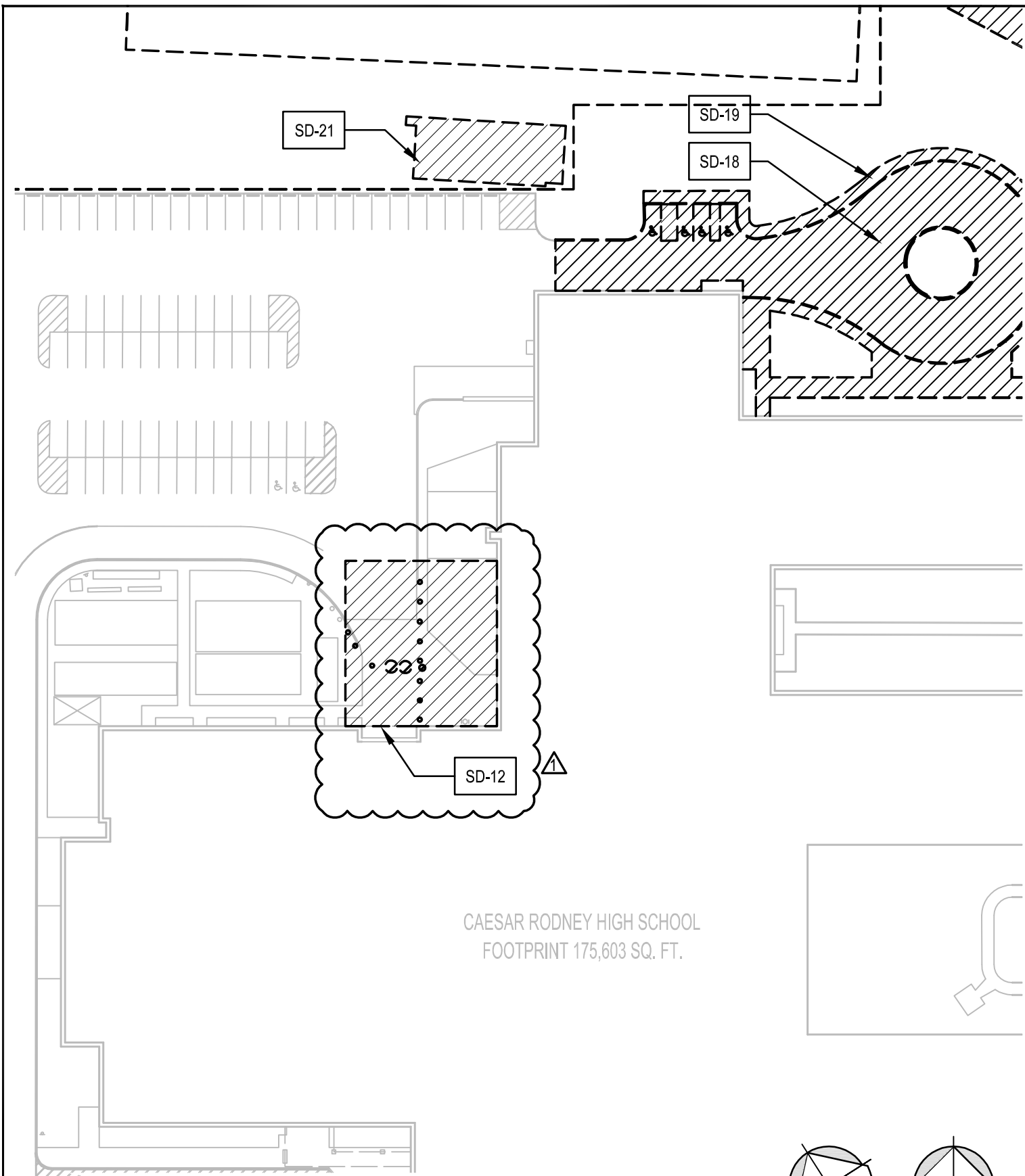
CORPORATE HEADQUARTERS  
2500 WINDLE HILL ROAD, STE. 110  
BOWEN, DE 19031  
P: (302) 853-4852 F: (302) 853-4823

Website:  
www.studiojaed.com

E-MAIL:  
info@studiojaed.com

REVISIONS:

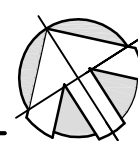
ADDENDUM 3



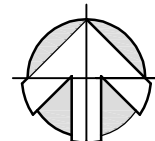
1  
2.0

# SITE DEMOLITION PLAN

SCALE: 1/64" = 1'-0"



TRUE NORTH



PROJECT NORTH

03/26/18	A2.0
DATE	SHEET NO.
16061	SK-A.04
PROJECT NO.	

CAESAR RODNEY SCHOOL DISTRICT
CAESAR RODNEY HIGH SCHOOL
ATHLETIC FIELDS AND SITE CONSTRUCTION
239 OLD NORTH ROAD
CAMDEN, DE 19934

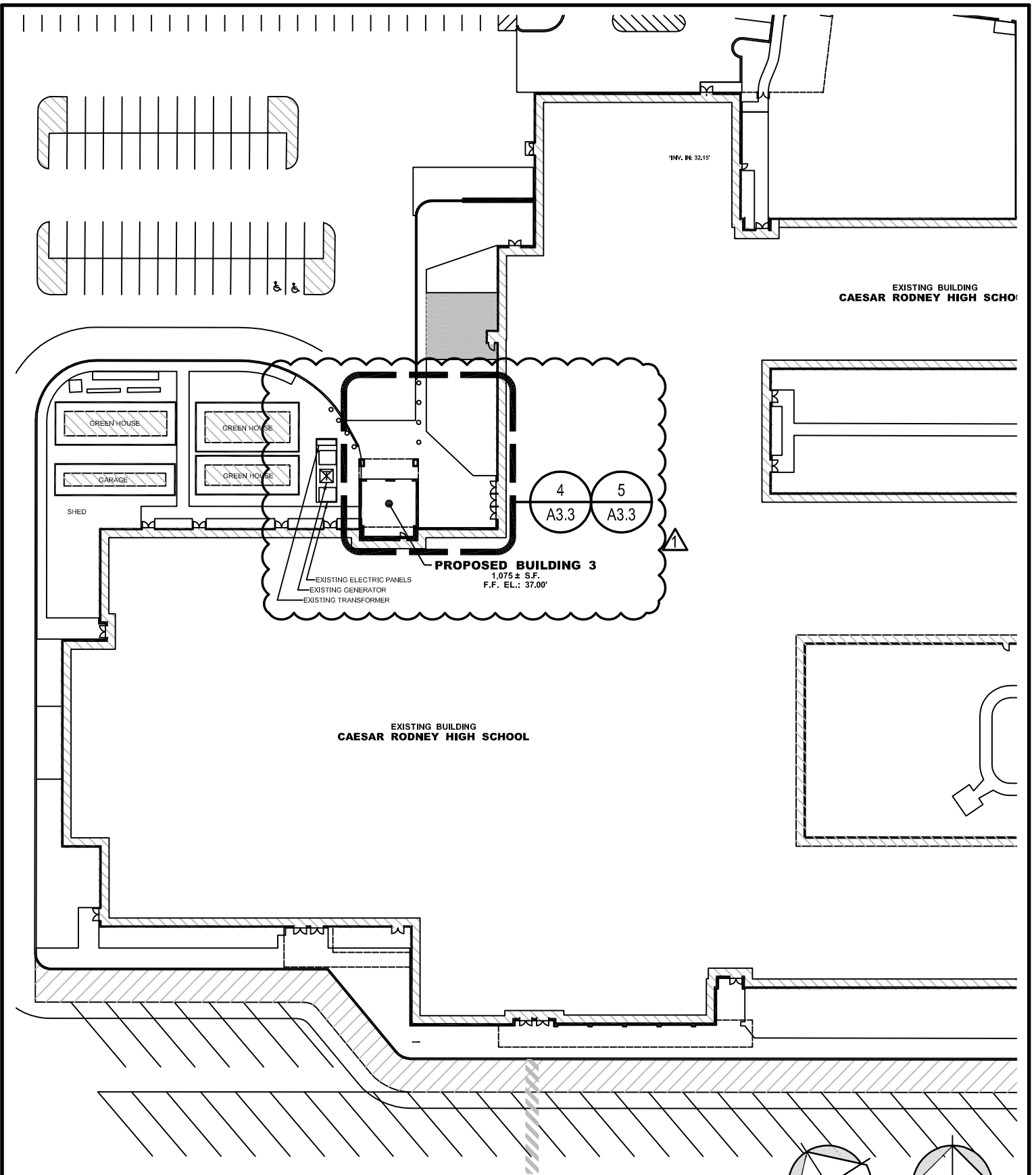
**STUDIO JAED**  
ARCHITECTS ■ ENGINEERS ■ FACILITIES SOLUTIONS

CORPORATE HEADQUARTERS  
2500 WINDLE HILL ROAD, STE. 110  
BRAN, DE 19001  
P: (302) 832-4652 F: (302) 832-4623

Website:  
www.studiojaed.com

E-MAIL:  
info@studiojaed.com

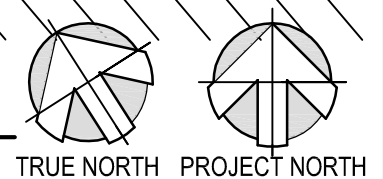
REVISIONS:
△ ADDENDUM 3



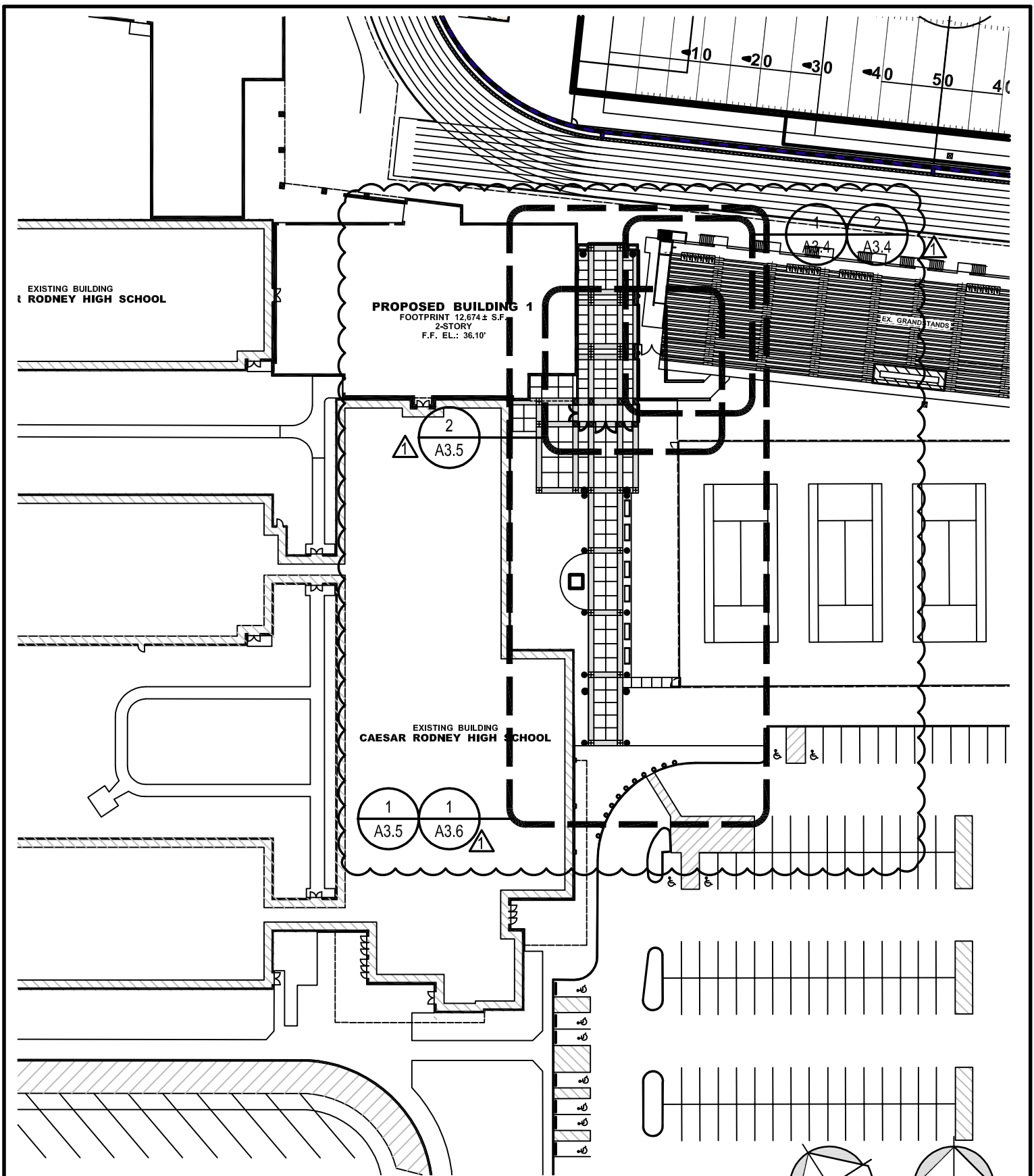
# 1 3.0

## SITE PLAN

SCALE: 1/64" = 1'-0"



03/26/18	A3.0	CAESAR RODNEY SCHOOL DISTRICT	 <p>ARCHITECTS ■ ENGINEERS ■ FACILITIES SOLUTIONS</p> <p>CORPORATE HEADQUARTERS 2500 WINDLE HILL ROAD, STE. 110 BOWEN, DE 19031 P: (302) 833-4852 F: (302) 833-4823</p> <p>Website: <a href="http://www.studiojaed.com">www.studiojaed.com</a></p> <p>E-MAIL: <a href="mailto:info@studiojaed.com">info@studiojaed.com</a></p>	REVISIONS:
DATE	SHEET NO.	CAESAR RODNEY HIGH SCHOOL		ADDENDUM 3
16061	SK-A.05	ATHLETIC FIELDS AND SITE CONSTRUCTION		
PROJECT NO.		239 OLD NORTH ROAD CAMDEN, DE 19934		



# 1 3.0 SITE PLAN SCALE: 1/64" = 1'-0"

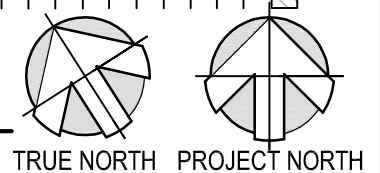




Diagram illustrating the electrical components and wiring for a Sanitary Sewer Grinder Pump Station (PL1S-40/42).

The diagram shows the following components and connections:

- CONDUIT UNDERGROUND - SEE PANEL SCHEDULE FOR WIRE AND CONDUIT SIZES.** (Indicated by a line pointing to the conduit entering the enclosure)
- (N) STARTER - NEMA SIZE 1 IN A NEMA3R ENCLOSURE ON A UNISTRUT RACK** (Indicated by a line pointing to the starter unit)
- (N) PNL-PL1S** (Indicated by a line pointing to the main power panel)
- (N) PNL-PH1S** (Indicated by a line pointing to the phase control panel)
- (N) NEMA3R SPLICE BOXES FOR POWER AND CONTROL WIRING.** (Indicated by a line pointing to the splice boxes)
- SANITARY SEWER GRINDER PUMP STATION - PL1S-40/42** (Indicated by a line pointing to the pump unit)
- (N) LFMC** (Indicated by a line pointing to the Low Frequency Motor Control unit)

The diagram also shows a cross-section of the underground conduit and a view of the pump station enclosure.

### E9.3

SCALE: 1/16" = 1'-0"

REVISIONS:

NO.	DESCRIPTION	DATE
1	ADDENDUM #1	

# NEW PANEL - PART OF ADDITIONS AND RENOVATIONS PROJECT

<b>PANEL: PL1S</b> <b>LOCATION: STORAGE SHED</b> <b>BUS: 225A</b> <b>MAIN: 150A MCB</b>										<b>VOLTAGE: 208/120V, 3PH/4W</b> <b>ENCLOSURE: NEMA 1</b> <b>A.I.C: 14,000</b> <b>RATINGS: FULL</b>									
WIRE SIZE	ØA kVA	ØB kVA	ØC kVA	DESCRIPTION	Pole	Br	Ckt	Ø	A	B	C	Ckt	Br	Pole	DESCRIPTION	ØA kVA	ØB kVA	ØC kVA	WIRE SIZE
-	-	-	-	-	-	-	1	-	-	-	-	2	-	-	-	-	-	-	-
-	-	-	-	-	-	-	3	-	-	-	-	4	-	-	-	-	-	-	-
-	-	-	-	-	-	-	5	-	-	-	-	6	-	-	-	-	-	-	-
-	-	-	-	-	-	-	7	-	-	-	-	8	-	-	-	-	-	-	-
-	-	-	-	-	-	-	9	-	-	-	-	10	-	-	-	-	-	-	-
-	-	-	-	-	-	-	11	-	-	-	-	12	-	-	-	-	-	-	-
-	-	-	-	-	-	-	13	-	-	-	-	14	-	-	-	-	-	-	-
-	-	-	-	-	-	-	15	-	-	-	-	16	-	-	-	-	-	-	-
-	-	-	-	-	-	-	17	-	-	-	-	18	-	-	-	-	-	-	-
-	-	-	-	-	-	-	19	-	-	-	-	20	-	-	-	-	-	-	-
-	-	-	-	-	-	-	21	-	-	-	-	22	-	-	-	-	-	-	-
-	-	-	-	-	-	-	23	-	-	-	-	24	-	-	-	-	-	-	-
-	-	-	-	-	-	-	25	-	-	-	-	26	-	-	-	-	-	-	-
-	-	-	-	-	-	-	27	-	-	-	-	28	-	-	-	-	-	-	-
-	-	-	-	-	-	-	29	-	-	-	-	30	-	-	-	-	-	-	-
-	-	-	-	-	-	-	31	-	-	-	-	32	-	-	-	-	-	-	-
-	-	-	-	-	-	-	33	-	-	-	-	34	-	-	-	-	-	-	-
-	-	-	-	-	-	-	35	-	-	-	-	36	-	-	-	-	-	-	-
-	-	-	-	-	-	-	37	-	-	-	-	38	-	-	-	-	-	-	-
8	0.46	-	-	FOOTBALL FIELD SCOREBOARD	1	20	39	-	-	-	-	40	20	2	GRINDER PUMP	-	0.92	-	10
8	-	0.18	-	RECEPT. - FOOTBALL SCOREBOARD	1	20	41	-	-	-	-	42	-	-	-	-	0.92	-	10
CONNECTED LOAD																			
PHASE A: __ kVA																			
PHASE B: __ kVA																			
PHASE C: __ kVA																			
TOTAL CONNECTED LOAD = __ kVA																			

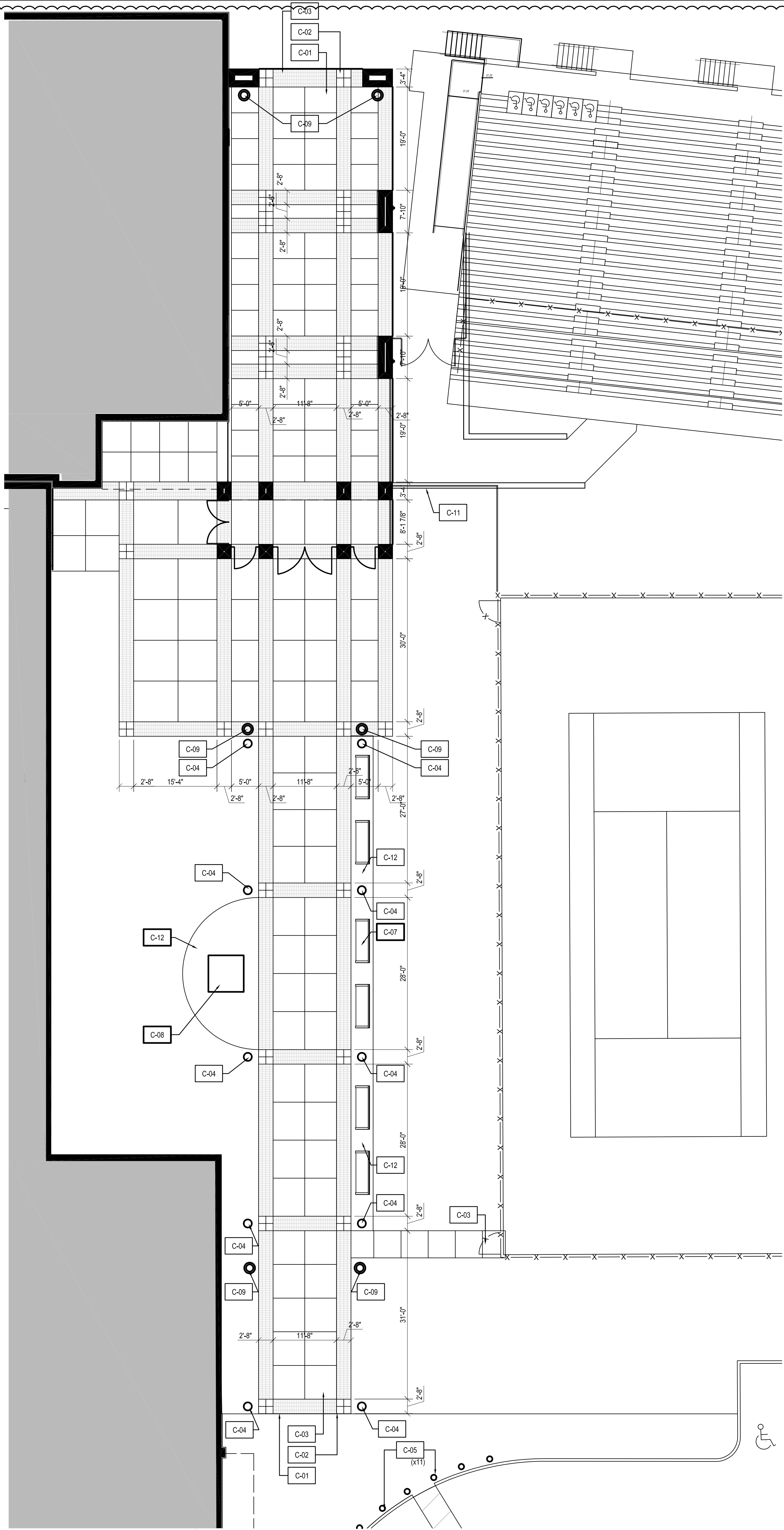
\* PROVIDE NEW 20A/1P CIRCUIT BREAKER AND 2#8 + 1#8G - 1" WIRING  
 \*\* PROVIDE NEW 20A/2P CIRCUIT BREAKER AND 2#10 + 1#10G - 3/4" C WIRING FOR POWER + 3#12 + 1#12G - 3/4" C WIRING FOR CONTROLS.

REVISIONS:  
 ADDENDUM 3



PROJECT:  
 CAESAR RODNEY SCHOOL DISTRICT  
 CAESAR RODNEY HIGH SCHOOL  
 ATHLETIC FIELDS AND SITE CONSTRUCTION  
 239 OLD NORTH ROAD  
 CAMDEN, DE 19934

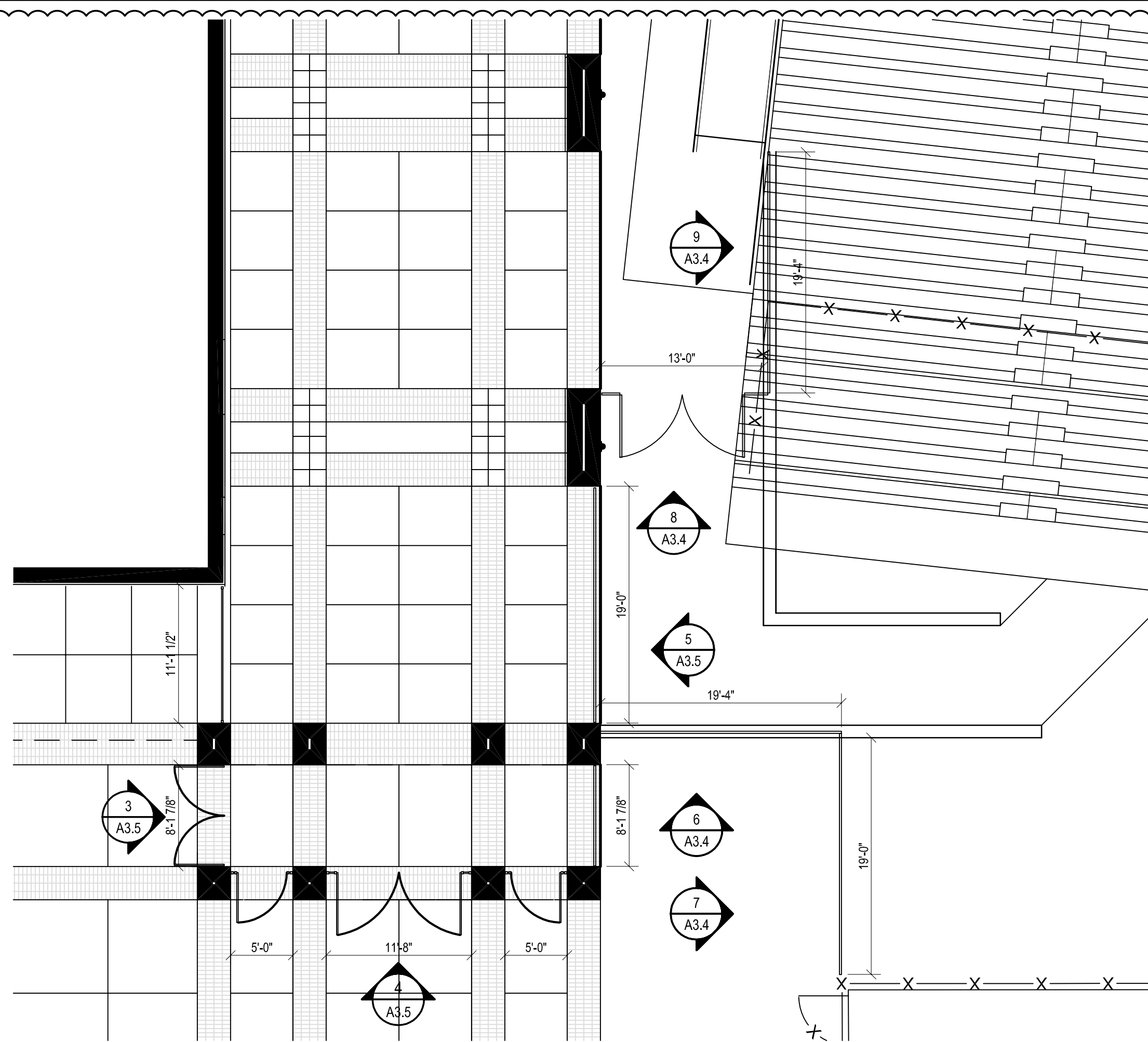
3/26/2018 E9.3  
 DATE SHEET NO.  
 16061 SK-E.02  
 PROJECT NO.



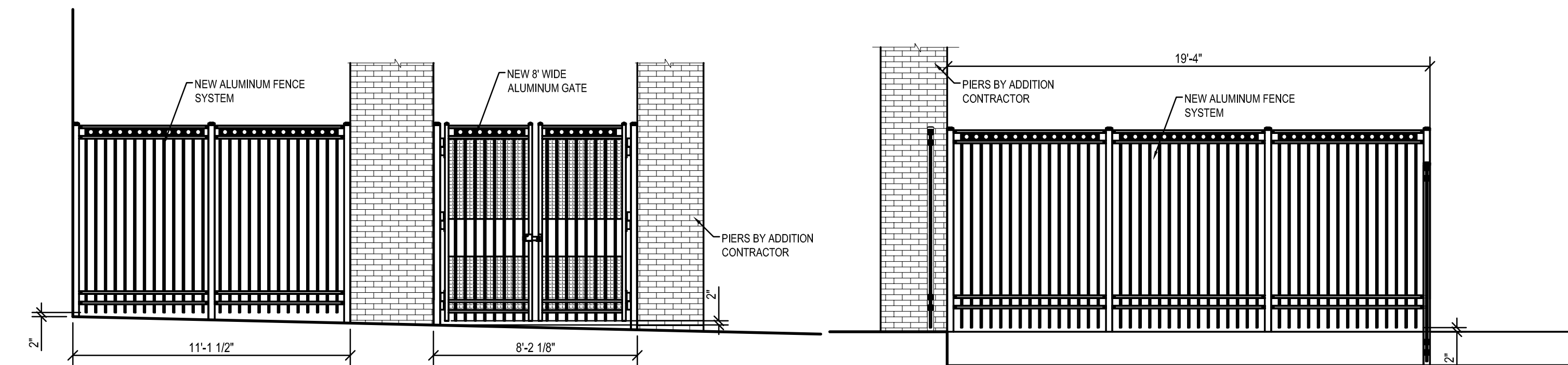
1  
3.5

ENLARGED SITE PLAN - GATE WAY WALK

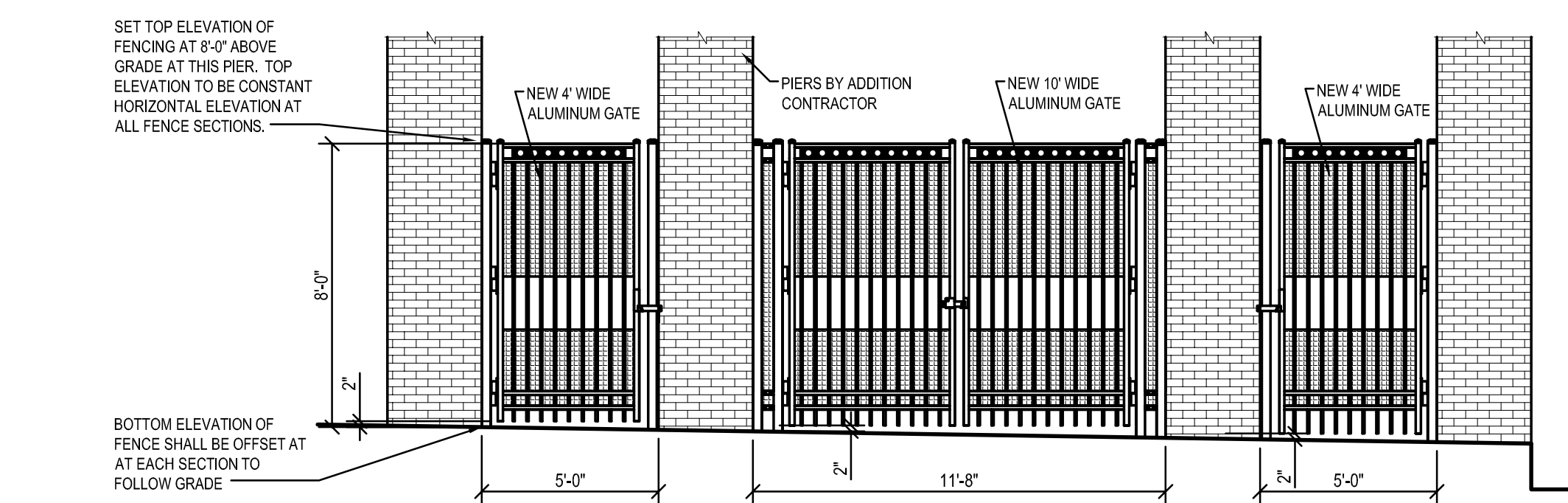
SCALE: 3/32" = 1'-0"



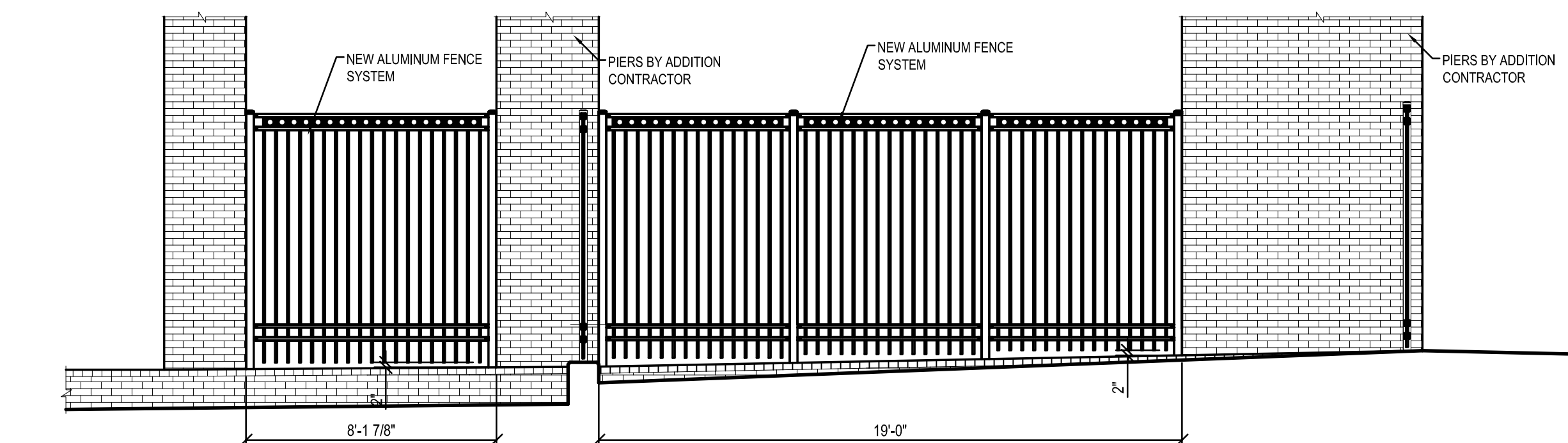
2 ENLARGED ALUMINUM FENCE PLAN AT STADIUM ENTRANCE  
3.5 SCALE: 1/4" = 1'-0"



3 ALUMINUM FENCE/GATE ELEVATION  
3.5 SCALE: 1/4" = 1'-0"

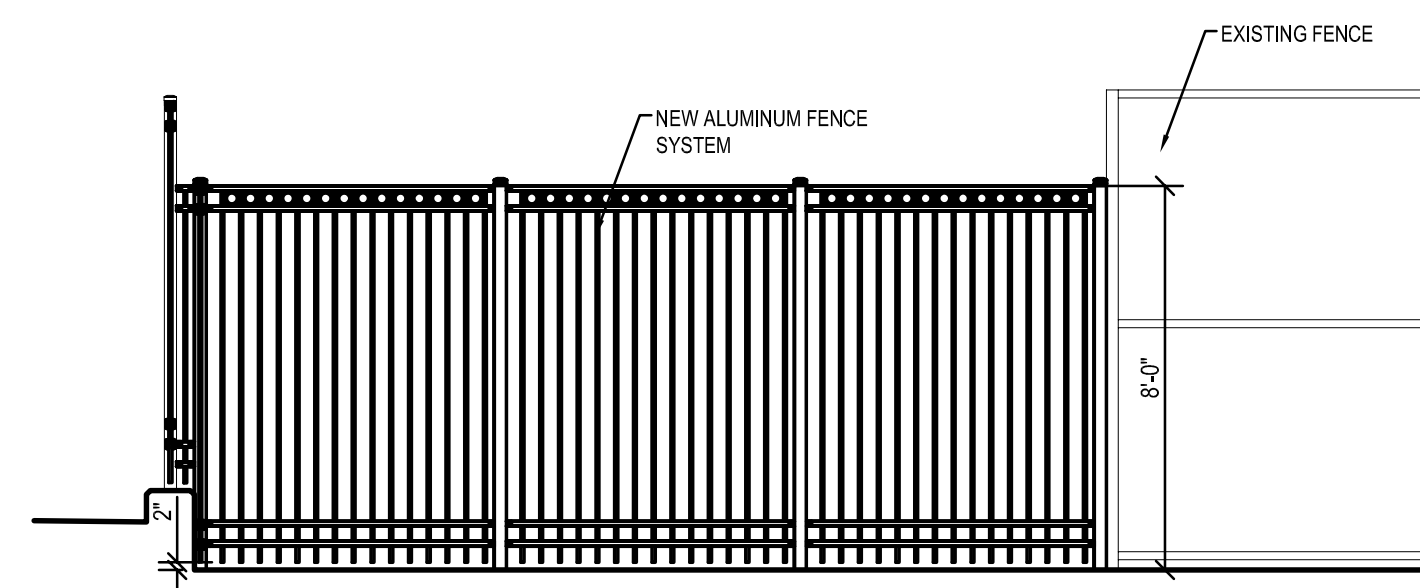


ALUMINUM FENCE/GATE ELEVATION

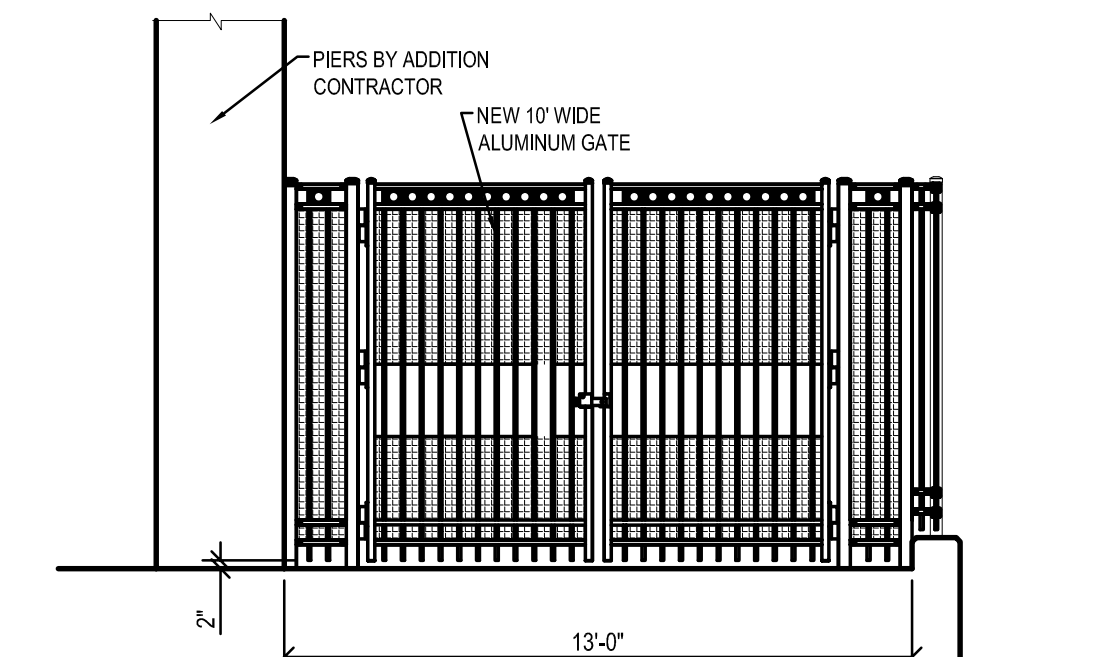


5 ALUMINUM FENCE/GATE ELEVATION  
3.5 SCALE: 1/4" = 1'-0"

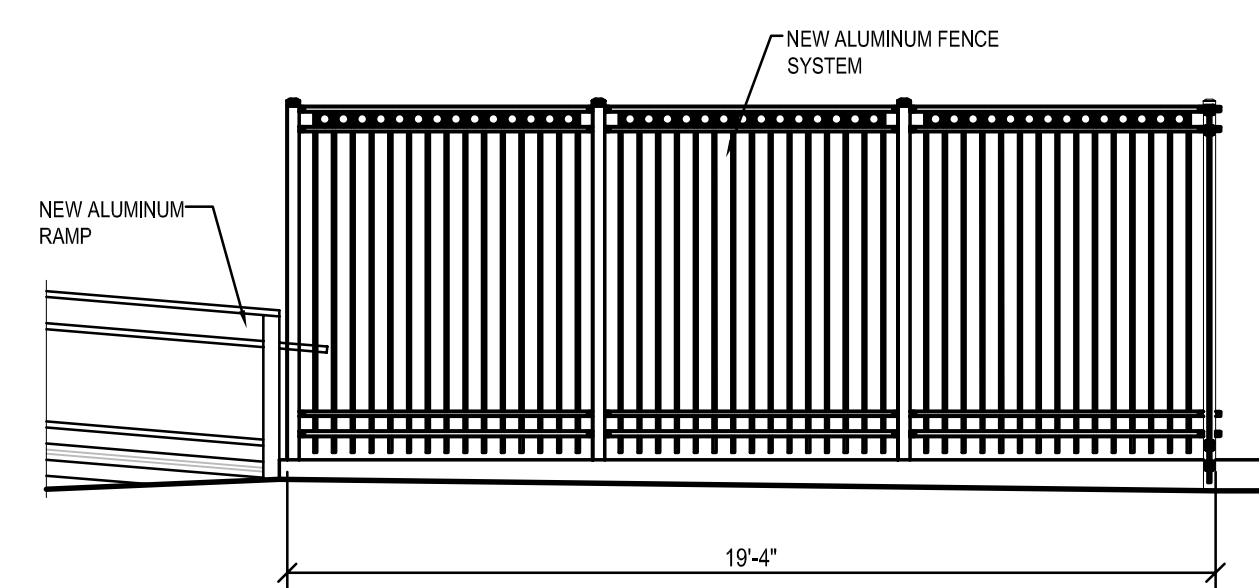
SITE CONSTRUCTION KEY NOTE LEGEND:	
C-01	NEW 5" CONCRETE SLAB - SEE SECTION DETAILS AND CIVIL PLAN FOR MORE INFORMATION.
C-02	NEW 16"x16" STONE MEDALLIONS INLAID INTO NEW CONCRETE WALK - TYPICAL AT ALL BRICK INTERSECTIONS.
C-03	NEW (4) COURSES OF INLAID BRICK INTO NEW CONCRETE WALK.
C-04	NEW SITE LIGHTING FIXTURE - SEE ELECTRICAL PLANS FOR MORE INFORMATION
C-05	NEW REMOVABLE BOLLARD, TYP. SPACING 5'-0" MAX. - SEE DETAILS AND OVERALL SITE PLAN FOR MORE INFORMATION.
C-06	- NOT USED -
C-07	NEW EXTERIOR STEEL BENCH.
C-08	TORCH OF KNOWLEDGE SCULPTURE. CONSTRUCTION UNDER SEPARATE CONTRACT.
C-09	NEW STEEL TRASH RECEPTACLE.
C-10	- NOT USED -
C-11	NEW BRICK RETAINING WALL - SEE SECTION FOR MORE INFORMATION ; HEIGHT VARIES - COORDINATE WITH CIVIL DWGS.
C-12	PERVIOUS STONE BED.



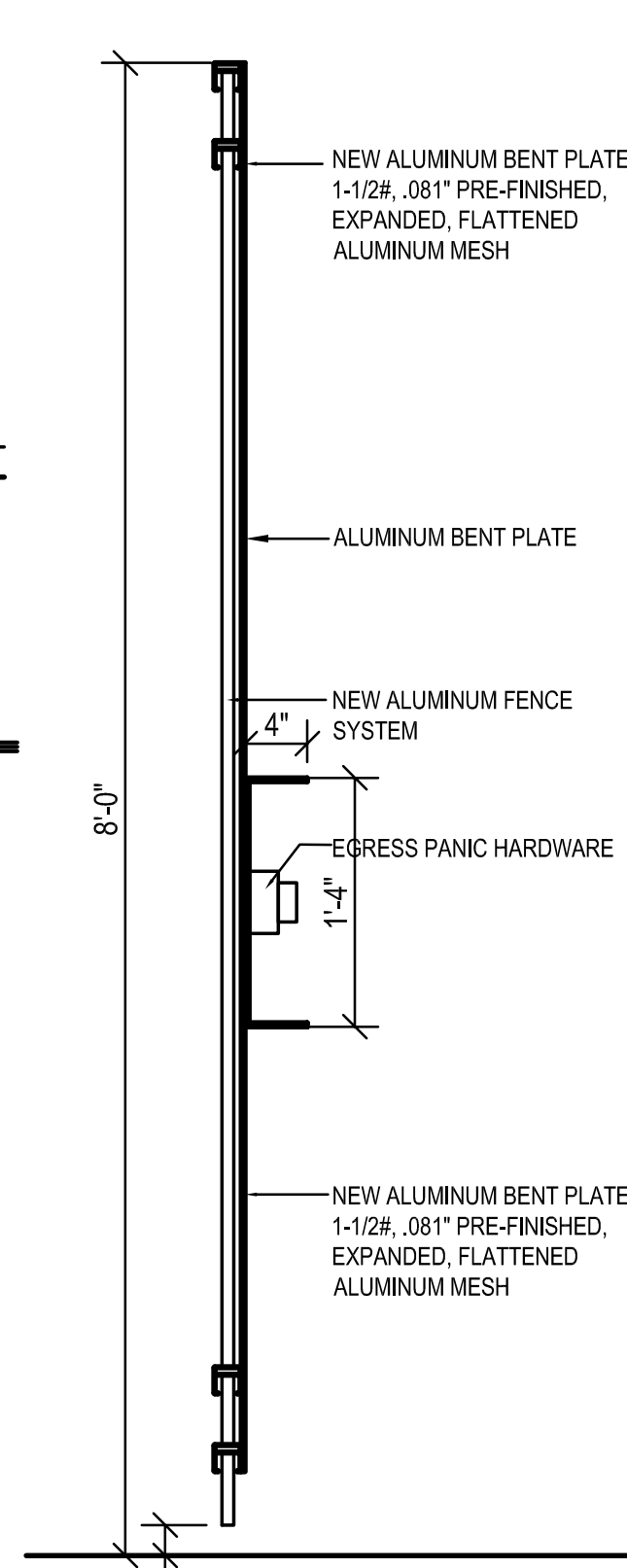
7 ALUMINUM FENCE/GATE ELEVATION  
3.5 SCALE: 1/4" = 1'-0"



8 ALUMINUM FENCE/GATE ELEVATION  
3.5 SCALE: 1/4" = 1'-0"



9 ALUMINUM FENCE/GATE ELEVATION  
3.5 SCALE: 1/4" = 1'-0"



10  
3.5

DETAIL AT ALUM. GATE

SCALE: 3/4" = 1'-0"

ARCHITECT / ENGINEER SEAL

---

This drawing is the property of StudioJAED and is prepared for the exclusive use of its clients at the location indicated. No other use is authorized or intended.

 **STUDIO JAED**  
ARCHITECTS ■ ENGINEERS ■ FACILITIES SOLUTIONS

**CORPORATE HEADQUARTERS**  
10000 WILLOW HILL ROAD, STE. 110  
BEAR, DE 19701  
P: (302) 832-1652 F: (302) 832-4243  
E: info@StudioJAED.com  
www.StudioJAED.com

## REVISIONS

**ADDENDUM 3** 3-26-

CAESAR RODNEY SCHOOL DISTRICT  
CAESAR RODNEY HIGH SCHOOL  
ATHLETIC FIELDS AND SITE CONSTRUCTION  
239 OLD NORTH ROAD  
CAMDEN, DE 19934

PROJECT

## WALKWAY PLAN AND DETAILS

# CONSTRUCTION DOCUMENTS

FEBRUARY 23, 2018

DRAWN \_\_\_\_\_ CHK'D/DESIGNED \_\_\_\_\_

ABD PG

ADD	TC
_____	_____

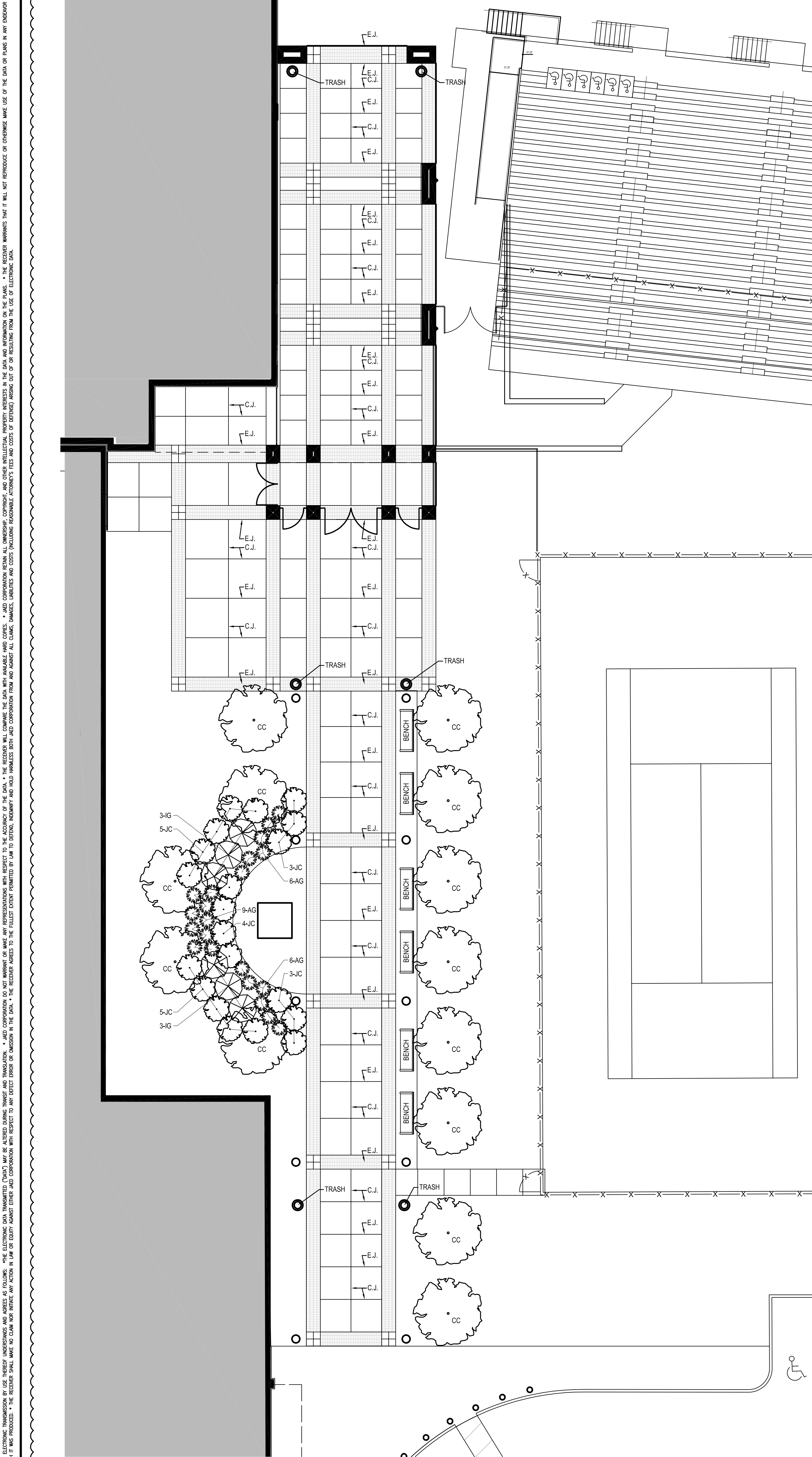
DISCIPLINE SHEET NO.

A

PROJECT NO. 3.5

PROJECT NO. 010  
10551

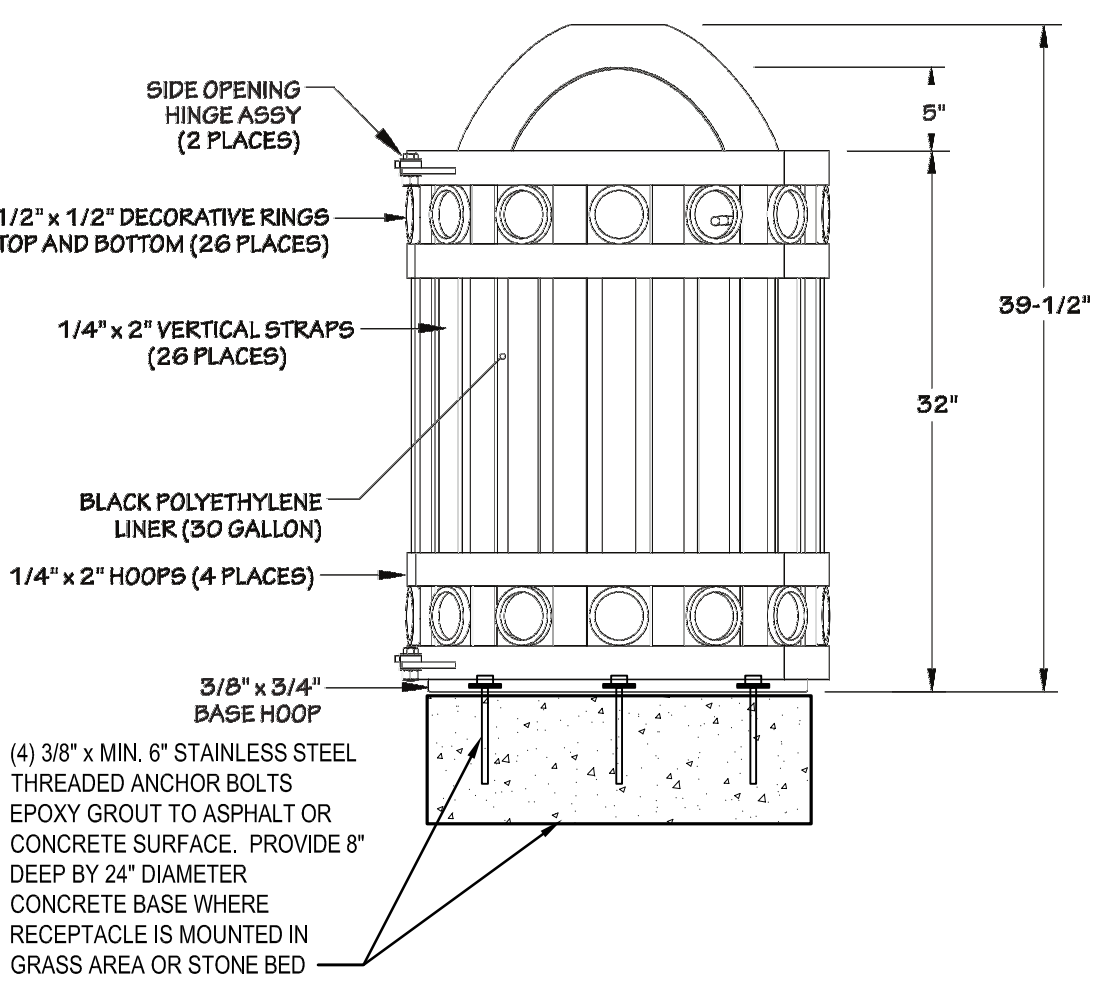




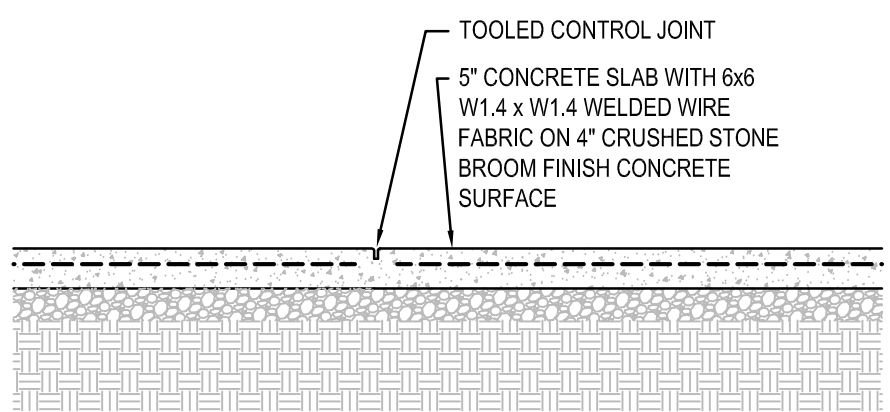
1 LANDSCAPE PLAN - GATE WAY WALK  
3.6 SCALE: 3/32" = 1'-0"



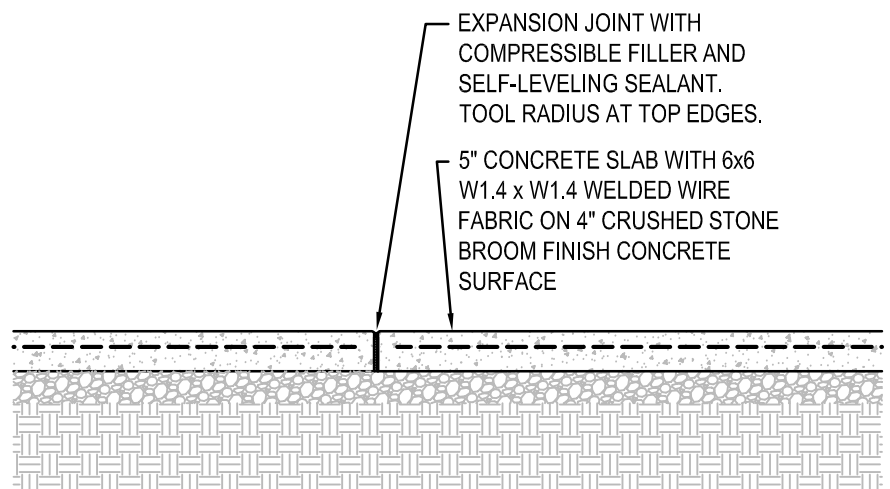
3 BENCH MOUNTING DETAIL  
3.6 SCALE: 1" = 1'-0"



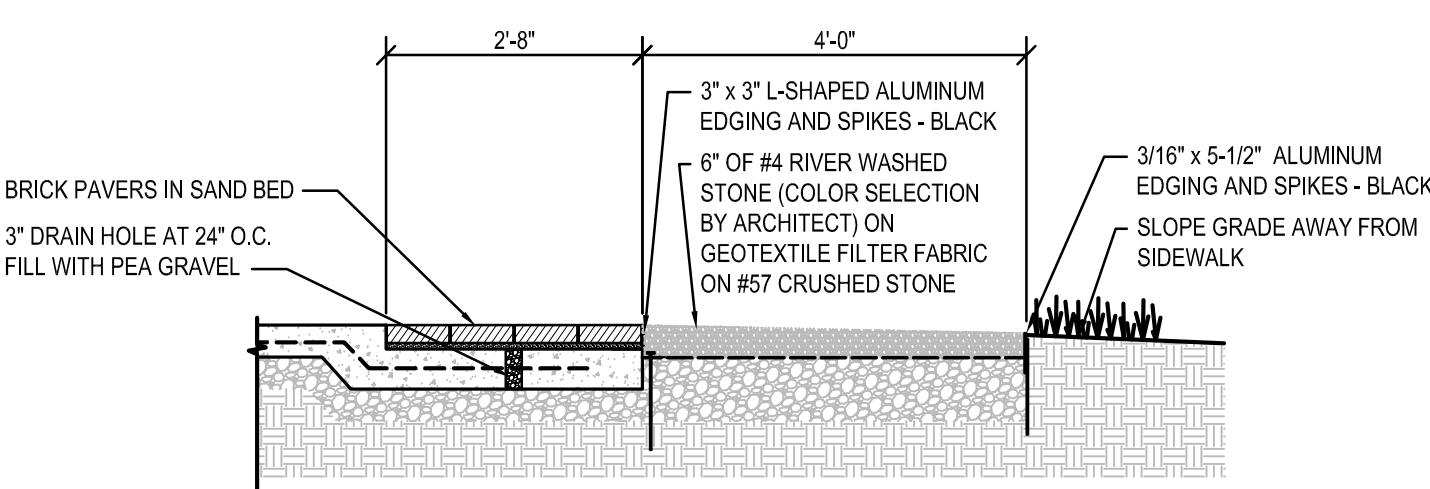
2 TRASH RECEPTACLE MOUNTING DETAIL  
3.6 SCALE: 1" = 1'-0"



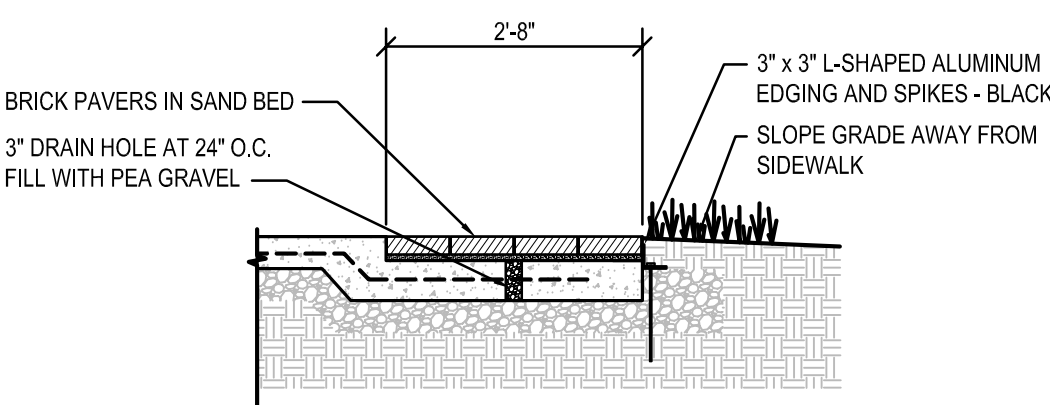
7 BENCH MOUNTING DETAIL  
3.6 SCALE: 1/2" = 1'-0"



6 WALKWAY CONTROL JOINT DETAIL  
3.6 SCALE: 1/2" = 1'-0"



5 WALKWAY / BRICK EDGE DETAIL  
3.6 SCALE: 1/2" = 1'-0"



4 WALKWAY / BRICK EDGE DETAIL  
3.6 SCALE: 1/2" = 1'-0"

PLANT LIST						
TAG	QTY	SCIENTIFIC NAME	COMMON NAME	PLANTING SIZE	MATURE SIZE	DELIVERY
AG	21	ABELIA GRANDIFLORA 'LITTLE RICHARD'	ABELIA	#3	3' x 3'	CONTAINER
IG	6	ILEX GLABRA COMPACTA	COMPACT INK BERRY HOLLY	24"	4' - 6'	CONTAINER
JC	16	JUNIPERUS CONFERTA 'BLUE PACIFIC'	BLUE PACIFIC SHORE JUNIPER	3 GALLON	1' x 6'	CONTAINER
CC	13	CERCIS CANADENSIS	EASTERN RED BUD	10' - 12'	20' - 30'	BALLED & BURLAPED
						NOTE
						SEMI-EVERGREEN
						EVERGREEN
						EVERGREEN
						DECIDUOUS

ARCHITECT / ENGINEER SEAL

This drawing is the property of StudioJAED and is prepared for the exclusive use of its clients at the location indicated. No other use is authorized or intended.

**STUDIO JAED**  
ARCHITECTS ■ ENGINEERS ■ FACILITIES SOLUTIONS  
CORPORATE HEADQUARTERS  
2500 WIRANGE HILL ROAD, STE. 110  
BEAR, DE 19701  
P: (302) 832-1652 F: (302) 832-1423  
E-Mail: info@studiojaed.com  
Website: www.studiojaed.com

REVISIONS

ADDENDUM 3 3-26-18

CAESAR RODNEY SCHOOL DISTRICT  
CAESAR RODNEY HIGH SCHOOL  
ATHLETIC FIELDS AND SITE CONSTRUCTION  
239 OLD NORTH ROAD  
CAMDEN, DE 19834

PROJECT

LANDSCAPE PLAN AND DETAILS

CONSTRUCTION DOCUMENTS  
FEBRUARY 23, 2018

DRAWN: ABD CHK'D/DESIGNER: PG

DISCIPLINE: A SHEET NO.

PROJECT NO. 16061

3.6