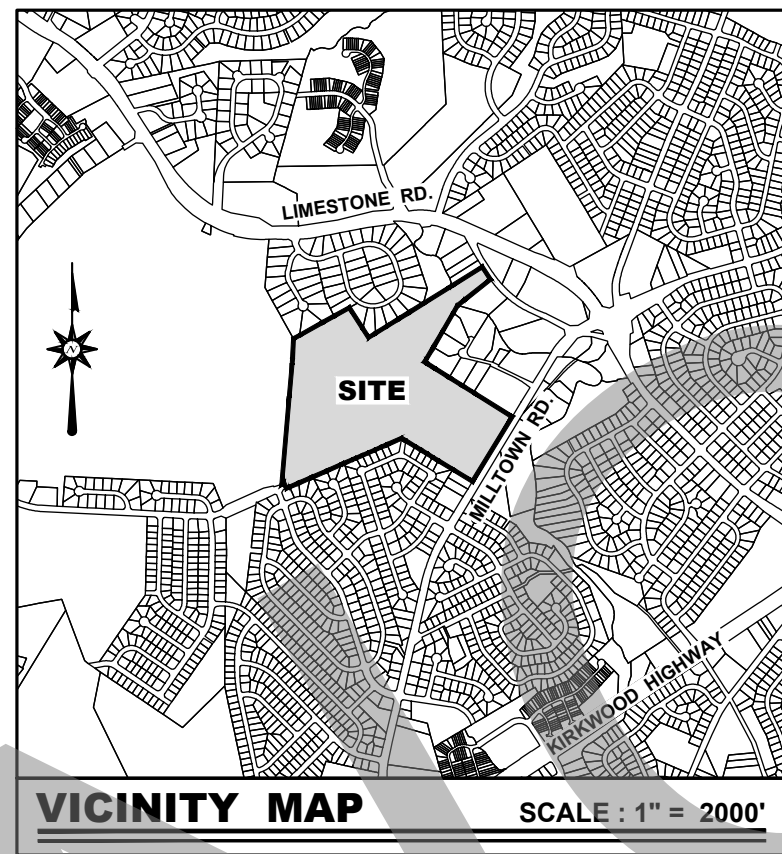


# JOHN DICKINSON HIGH SCHOOL

## RUNNING TRACK REHABILITATION PLANS



**BECKER  
MORGAN  
GROUP**

ARCHITECTURE  
ENGINEERING

Dover, DE

309 S. Governors Ave.  
Dover, DE 19904  
Ph. 302.734.7950  
Fax 302.734.7965

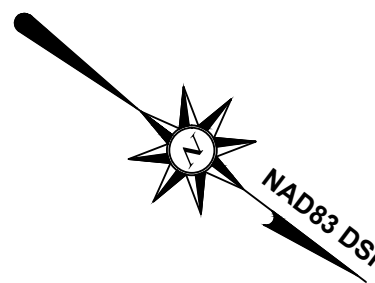
Salisbury, MD

312 West Main St. Suite 300  
Salisbury, MD 21801  
Ph. 410.546.9100  
Fax 410.546.5824

Wilmington, NC

3205 Randall Parkway, Suite 211  
Wilmington, North Carolina 28403  
Ph. 910.341.7600  
Fax 910.341.7506

www.beckermorgan.com



PROJECT TITLE

**JOHN DICKINSON  
HIGH SCHOOL**

**RED CLAY CONSOLIDATED  
SCHOOL DISTRICT**

**1801 MILLTOWN ROAD  
MILL CREEK HUNDRED  
NEW CASTLE COUNTY, DE**

SHEET TITLE

**EXISTING  
CONDITIONS PLAN**

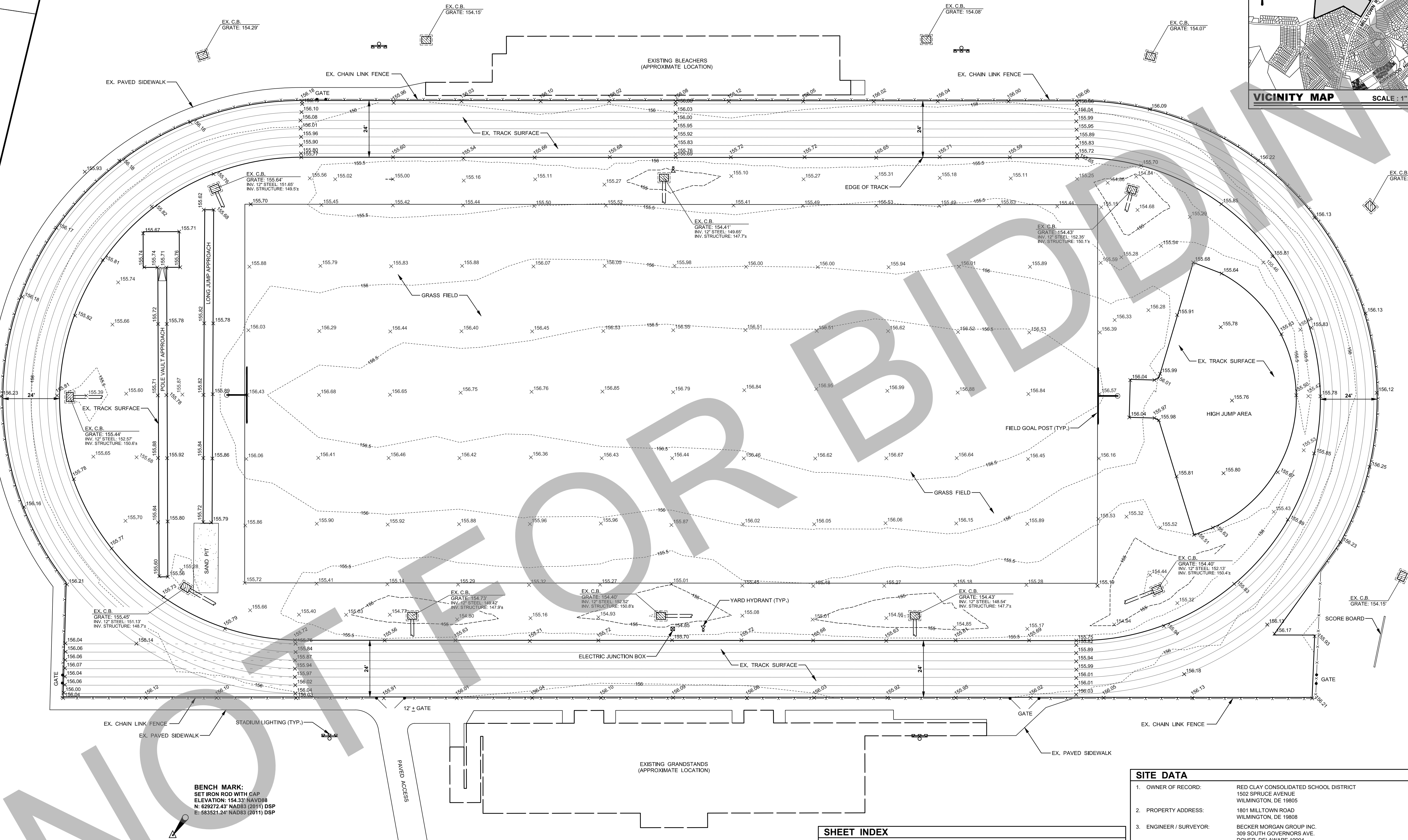
0 10 20 40  
**SCALE : 1" = 20'**

ISSUE BLOCK

MARK	DATE	DESCRIPTION
1	02-22-17	ISSUED FOR BIDDING
2	02-22-2017	DATE
3	1" = 20'	SCALE
4	A.W.J.	DRAWN BY
5	J.S.F.	PROJ. MGR.
6	C-101	SHEET

**C-101**

COPYRIGHT 2015



### SHEET INDEX

C-101 EXISTING CONDITIONS PLAN  
C-102 EXISTING CONDITIONS PLAN (WITH 2012 AERIAL)  
C-201 TRACK SURFACE REHABILITATION PLAN  
C-202 TRACK SURFACE REHABILITATION DETAILS

### GENERAL NOTES :

1. TOPOGRAPHIC SURVEY OF FOOTBALL FIELD WAS PREPARED BY BECKER MORGAN GROUP, DOVER, DE., IN OCTOBER OF 2016.
2. A BOUNDARY RETRACEMENT WAS NOT PERFORMED OR REQUESTED.
3. THE LOCATION OF EXISTING UTILITIES SHOWN HEREON ARE BASED ON FIELD OBSERVATIONS AT TIME OF SURVEY. NO SUBSURFACE LOCATING WAS PERFORMED TO VERIFY THE LOCATION OF SHOWN UTILITIES OR TO DETERMINE THE EXISTENCE OF OTHER UNDERGROUND UTILITIES THAT MAY EXIST.
4. MEASUREMENTS WERE MADE WITH A TOPCON QS-3A ELECTRONIC TOTAL STATION. POINTS COLLECTED WERE TRANPOSED FROM AN ASSUMED COORDINATE SYSTEM TO DELAWARE STATE PLANE COORDINATES UTILIZING VALUES DERIVED THROUGH A LIMITED CONSTRAINT POST PROCESS OF STATIC GNSS OBSERVATIONS ON SURVEY CONTROL. VERTICAL DATUM IS BASED ON NGS MONUMENT S3 (NAVD 88) WITH TIES TO OTHER NEAR BY PASSIVE NGS MONUMENTS. HORIZONTAL DATUM IS BASED ON ACTIVE NGS MONUMENTS - DELAWARE STATE PLANE NAD 83 (2011).

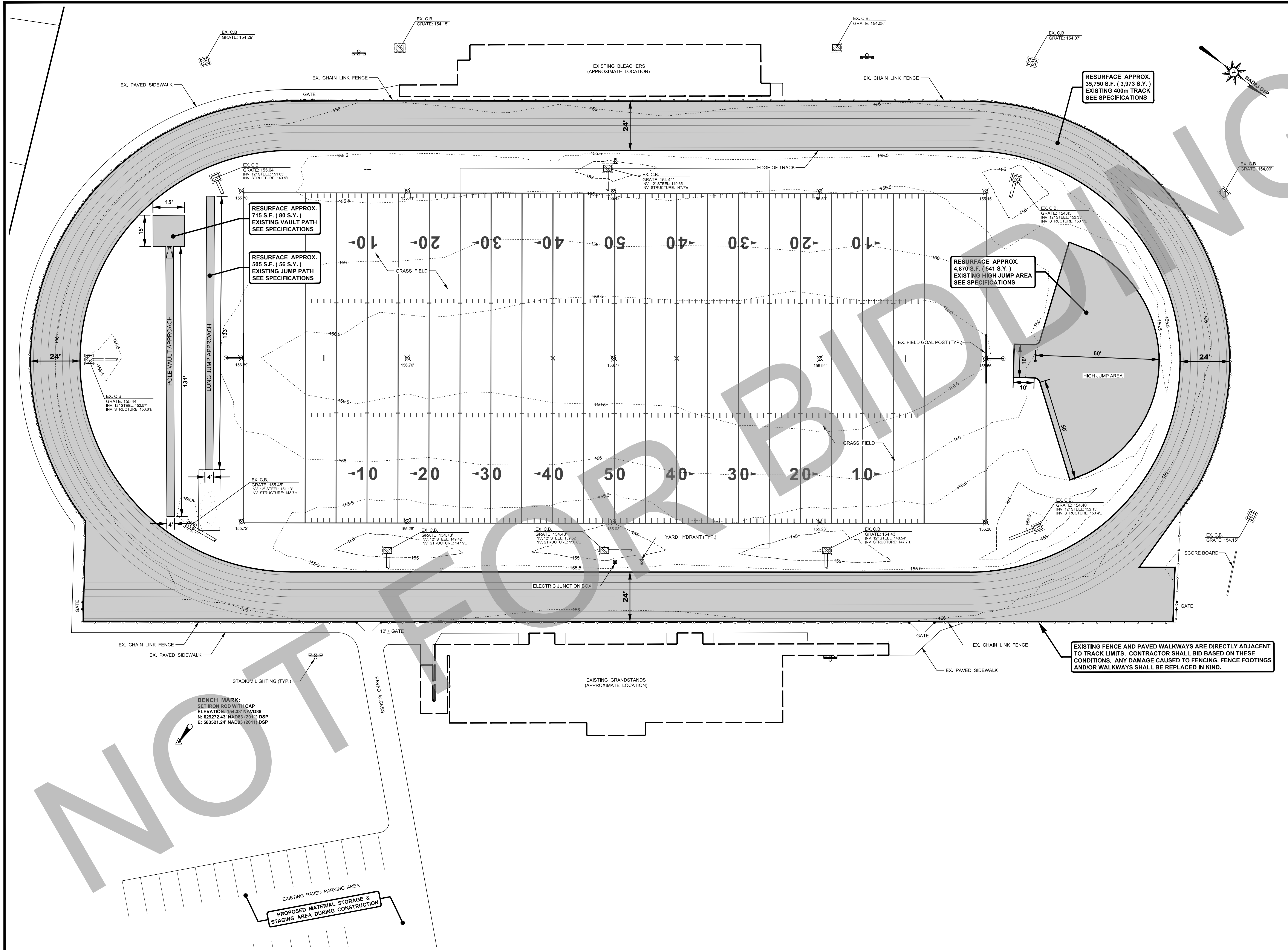
### SITE DATA

1. OWNER OF RECORD: RED CLAY CONSOLIDATED SCHOOL DISTRICT  
1502 SPRUCE AVENUE  
WILMINGTON, DE 19805
2. PROPERTY ADDRESS: 1801 MILLTOWN ROAD  
WILMINGTON, DE 19808
3. ENGINEER / SURVEYOR: BECKER MORGAN GROUP INC.  
309 SOUTH GOVERNORS AVE.  
DOVER, DELAWARE 19904  
302-734-7950
4. PROPERTY LOCATION: LATITUDE: N39° 43' 38.90" WRS80 - NAD83 (2011)  
LONGITUDE W75° 40' 29.79" WRS80 - NAD83 (2011)
5. PARCEL NUMBER: 0804300013
6. DEED REFERENCE: 20040827 0096004
7. MICROFILM REFERENCE: 200604100033833
8. ZONING CLASSIFICATION: S - SUBURBAN
9. PRESENT USE: HIGH SCHOOL
10. SURVEY DATUM: NGS MONUMENTS  
VERTICAL: NAVD 88 - S3  
HORIZONTAL: NAD 83 (2011) DSP - CORS
11. SURVEY CLASSIFICATION: URBAN SURVEY
12. SURVEY UNIT: LINEAR: US SURVEY FOOT  
ANGULAR: DEGREES MINUTES SECONDS (DMS)  
COORDINATE: GRID



F:\AutoCAD\Projects\2014\20141221\DWG\2014122-SVY-C3D15.dwg, Feb 23, 2017 - 9:55





ARCHITECTURE  
ENGINEERING

**Dover, DE**  
309 S. Governors Ave.  
Dover, DE 19904  
Ph. 302.734.7950  
Fax 302.734.7965

**Salisbury, MD**  
312 West Main St. Suite 300  
Salisbury, MD 21801  
Ph. 410.546.9100  
Fax 410.546.5824

**Wilmington, NC**  
3205 Randall Parkway, Suite 211  
Wilmington, North Carolina 28403  
Ph. 910.341.7600  
Fax 910.341.7506

[www.beckermorgan.com](http://www.beckermorgan.com)

PROJECT TITLE

**JOHN DICKINSON  
HIGH SCHOOL**

**RED CLAY CONSOLIDATED  
SCHOOL DISTRICT**

**1801 MILLTOWN ROAD  
MILL CREEK HUNDRED  
NEW CASTLE COUNTY, DE**

SHEET TITLE

**TRACK SURFACE  
REHABILITATION  
PLAN**

0 10 20 40  
**SCALE : 1" = 20'**

ISSUE BLOCK

1	02-22-17	ISSUED FOR BIDDING
MARK	DATE	DESCRIPTION
<b>PROJECT NO.: 2014122.02</b>		
<b>DATE: 01-17-2017</b>		
<b>SCALE: 1" = 20'</b>		
DRAWN BY: W.J.J. PROJ. MGR.: J.S.F.		
SHEET		
<b>C-201</b>		
COPYRIGHT: 2015		



1. INCLINATION SHALL BE LIMITED TO 2% Laterally and 0.1% in the jumping direction.
2. The take-off board system shall be manufactured from wood or synthetic material with an aluminum spacer and stainless steel base tray to provide a firm base. Aluminum spacer shall be coated with track surface on one side. Sportsfield specialties #FTL008SS, or approved equal.
3. The landing pit shall be refurnished with clean, washed sand and shall have the same elevation as the take-off board.

## LONG JUMP / TRIPLE JUMP RUNWAY

SCALE: 1" = 5'



1. INCLINATION SHALL BE LIMITED TO 2% Laterally and 0.1% in the running direction.

## POLE VAULT RUNWAY AND LANDING PAD AREA

SCALE: 1" = 5'



NO SCALE



NO SCALE



NO SCALE