

January 26, 2015

To: All Contractors

From: Professional Roof Services (*ejem*)

Re: Addendum #2  
Roof Replacement Project  
The Laundry Building  
Herman M. Holloway Sr. Campus - Contract No. MJ3505000027

1. A substantial amount of mechanical work has been completed on this roof since P.R.S.I. completed the database that provided the information for writing this specification and the drawing that came with it. Attached to this Addendum is an updated drawing showing the changes that have been made as a result of this mechanical work as well as details and descriptions for addressing these areas. Each of these changes are listed down below.
  - New curbs have been installed where the drawing references. NEW CURBS (TO BE INSTALLED)
  - New ductwork has been installed to provide air from these four new curbs to the two new HVAC Units shown on the drawing. New ductwork supports shall be installed at existing locations. New supports are required to be mounted to the structural deck. Supports will then be flashed using the Chem Curb detail given in the specification #D-PP-701.
  - The two vents and associated curbs shown on the drawing in the northwest corner of the roof have been removed. Because no information has been provided on how these openings in the deck were addressed the contractor awarded the job will be responsible for recovering these holes. Base your quote upon the attached detail #D-AP-100 and description. Additionally two hot stacks that were in the northeast corner of the roof have also been removed and the existing holes are currently covered with plywood. These two areas will also need to be recovered by the contractor awarded this job. Detail D-AP-155 will be used for recovering these holes. **These locations have been marked on the attached drawing in light blue.**

- Vent on the west side of the roof where it was referenced to replace the missing hood is now a capped curb and the exhaust vent on the east side of the roof next to the drain are both to be removed. Location of equipment is marked on the attached drawing in red. The noted curbs will be removed measurements for these two areas are given. Base your quote upon the attached detail #D-AP-100 and description.
- The air conditioning unit on top of the capped curb in the northeast corner of the roof will be removed. Contractor will be responsible for evacuating the coolant from this unit and disconnecting the electric. The noted pitch pockets will be removed and any holes in the deck must be plugged. Location of the equipment is marked on the attached drawing in red.
- Additional hot stacks and vents have been added in the northwest corner of the roof. One of the vents has been flashed the other has not. This additional equipment is shown on the attached drawing and noted. Base your quote for flashing these additions upon the appropriate detail given in the specification listed down below.

- Heat Stack #D-RV-760
- Metal Flanged Units #D-MF-600.

- Contractor is to include pricing for installation of wood nailers around any new curbs that have been installed as part of the mechanical work so roof system can be flashed appropriately.
- Under Section 23 - of the specification. The remounting of the ladder to the wall will not be required. However the top section of the ladder will need to be attached with approved fasteners to the new wood blocking installed with the new roof hatch.
- For protection of wood that is not completely covered by the base sheet install one layer of Self-Adhering FR Base Sheet to all wood surfaces prior to installation of the vapor barrier on Roof Area 1. A description of the installation of this base sheet is attached to this addendum.

End of Addendum

Cc: Dean Seely, State of DE - OMB  
 David Miller, State of DE - OMB  
 Stephen King, State of DE – OMB  
 Mike Sanders, Harvard Environmental  
 Mike Kenefic, Kenefic Sales Associates  
 Brad Smith, PRSI  
 Blaine Chipola, PRSI  
 Mike McGonigle, PRSI

**DRAWING REDACTED**

## **2.0 ABANDONED PROJECTION REMOVAL:**

2.1 Existing projections that will be removed or have already been removed are noted on the drawing in red or light blue. Projections will be removed to a point below the concrete plank decking.

2.2 Where Openings in the Deck will be Greater Than 2' x 2': (Detail #D-AP-100)

- a. The projection and curb will be removed. Workmen must wear safety harnesses when working within 6 feet of the opening in the deck.
- b. Wood blocking will be installed around perimeter of opening. Grade "A" wood blocking will be secured to the deck with two (2) rows of approved fasteners spaced every 18 inches on center, staggered pattern. One (1) fastener will be located within two inches of the blocking ends.
- c. On the north and south side of the opening, install a 2"x2"x1/4" angle to the inside face of the wood nailer. Angle will be fastened to the wood blocking with approved fasteners spaced every 8 inches on center. Fasteners must penetrate wood blocking by a minimum of 2 inches.
- d. Across the angle iron, install 2" x 4" lumber every 12 inches on center. 2"x4" lumber will be Grade "A" and will be fastened to the angles with self-tapping metal screws. Over the 2"x4" lumber install a solid layer of 1/2" CDX ply that will completely cover the opening. Plywood will be fastened to the 2"x4" lumber with spiral shanked nails spaced every 8 inches on center.
- e. Cover the exposed wood with the Self-Adhered Base Sheet as described in section 3.0 of this Addendum. Across the primed concrete deck and wood cover, install the vapor barrier as specified.
- f. The tapered polyisocyanurate insulation will be installed across the vapor barrier to butt up tightly to the wood blocking. Over the plywood, in-fill with polyisocyanurate insulation match height of the surrounding tapered polyisocyanurate insulation.
- g. Over the polyisocyanurate insulation install the 1/4" Securock insulation and the roof system as specified.

2.3 Openings of 2' x 2' and less: (Detail #D-AP-155)

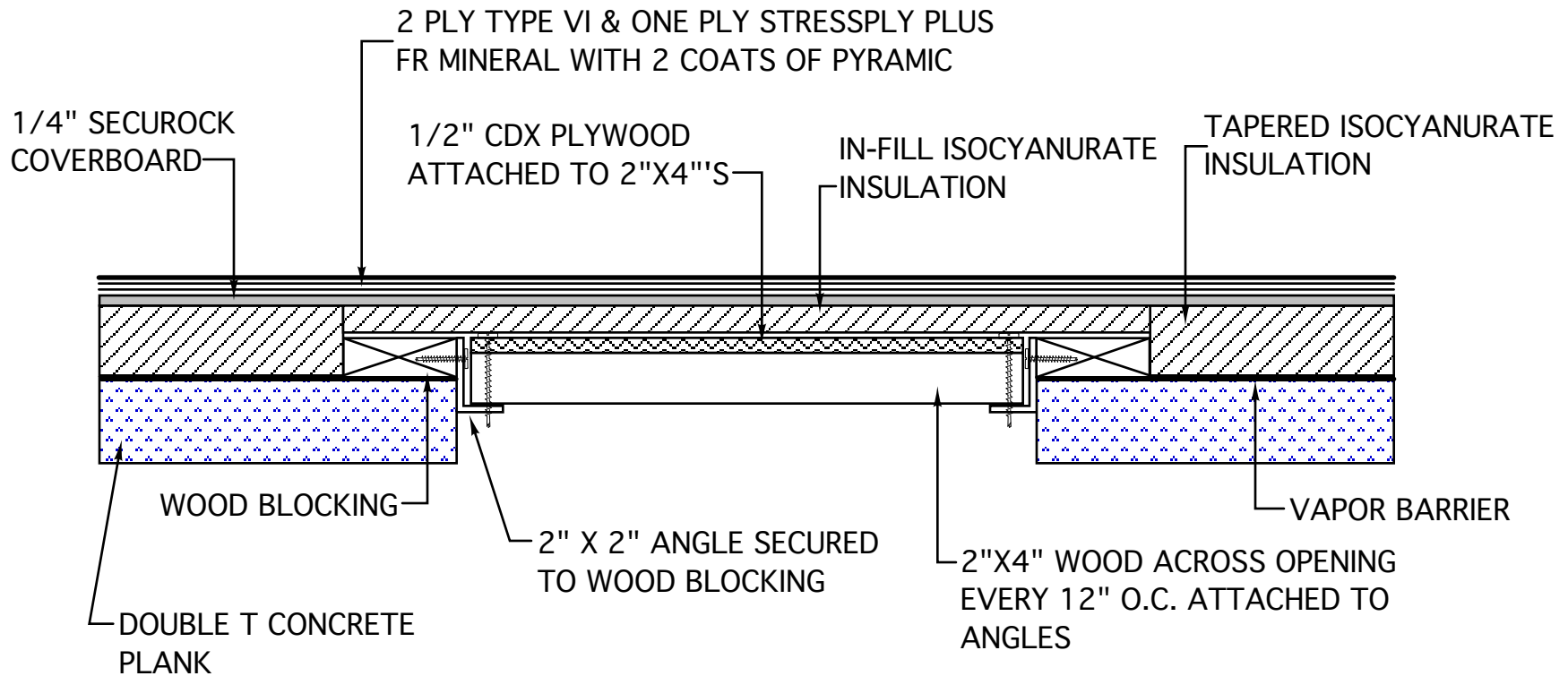
- a. Small holes in the deck, less than 2' x 2', will be covered with a 1/4" aluminum plate at least 8 inches wider than the opening. Plates will be secured to the structural deck with approved fasteners at an interval not less than every 6 inches on center. A minimum of four (4) fasteners per

plate will be required. Plate will be covered with the temporary roof and insulation as specified below. Special precautions will be taken where fasteners are required. Contractor will make sure no conduits, below the decking, will be damaged from the installation of the mechanical fastener.

- 2.4 During demolition, inside of building under the abandoned projections, must be protected from falling debris. This may be accomplished by the use of polyethylene or clean tarps. Contractor will remove all debris and clean area at the end of each days work. Scheduling and placement of interior protection must be closely coordinated and approved by the State's Project Manager.
- 2.5 The contractor will be responsible to remove all dirt and debris left by the removal of the overhead protection. This cleanup will also include the cleaning of the floor by a wet or dry vacuum to minimize dust. Sweeping of the floor by broom or other device is not acceptable. The State's Project Manager will make final acceptance of the cleaning.

**3.0 INSTALLATION OF SELF-ADHERING MEMBRANE AT ALL LOCATIONS TO RECEIVE WOOD (PERIMETER & PROJECTION FLASHINGS):**

- 3.1 For protection of wood that is not completely covered by the base sheet install one layer of Self-Adhering FR Base Sheet to all wood surfaces. Base Sheet will extend from a point three inches on the roof, up the wall and/or across the wood blocking to terminate at the top of any vertical blocking and below the bottom edge of any horizontal blocking.
- 3.2 Starting at a point three inches on the roofing system, unroll the self-adhering base sheet into the desired position. Fold the membrane length wise back onto itself, remove the split back release film from the exposed side and gradually push the membrane into place. Apply even pressure along the entire length of the membrane from the center to outer edges to avoid air pockets or wrinkles. Repeat for the other side. Firmly apply pressure with a suitable weighted roller to ensure 100% adhesion.
- 3.3 Position the next sheet overlapping the previous sheet by 4 inches. Firmly apply pressure with a suitable weighted roller to ensure 100% adhesion. Extend the plies down past the outer edge of the horizontal blocking and up and over the top of the vertical blocking.



PROFESSIONAL ROOF  
SERVICES, INC.

STATE OF DELAWARE  
HERMAN HOLLOWAY CAMPUS  
LAUNDRY BUILDING  
NEW CASTLE, DE

ABANDONED PROJECTION  
REMOVAL DETAIL  
OVER 2' X 2' IN SIZE  
DETAIL #D-AP-100