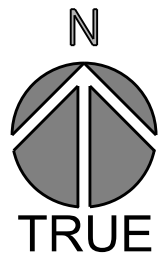


1

SITE PLAN

SCALE: 1" = 200'



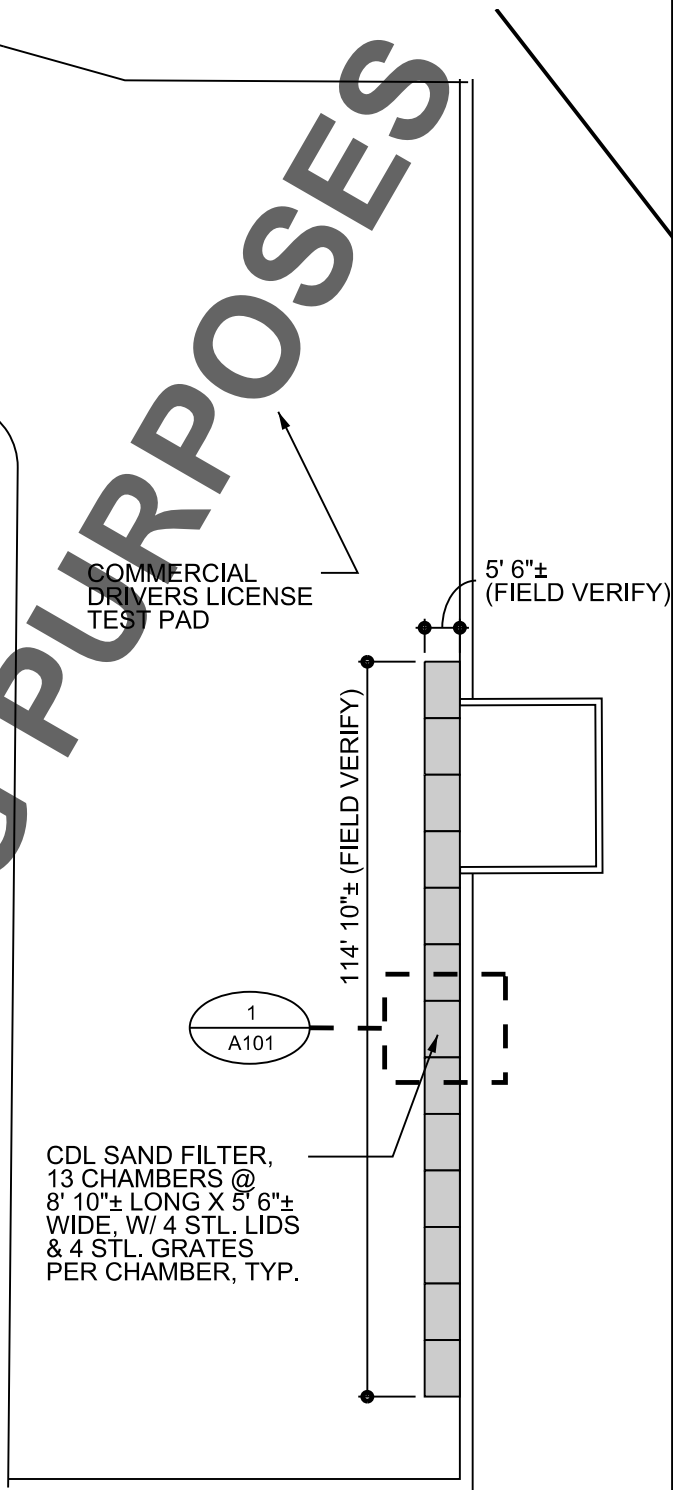
Dover  
 309 S. Governors Ave  
 Dover, DE 19904  
 P: 302.734.7950  
 F: 302.734.7965  
 www.beckermorgan.com

WILMINGTON DMV COMMERCIAL  
 DRIVERS LICENSE (CDL) TEST PAD  
 SAND FILTER REPAIRS  
 2230 HESSLER BLVD.  
 NEW CASTLE, DELAWARE

SITE PLAN		<b>C100</b> <small>COPYRIGHT © 2010</small>
PROJECT:	2015142.09	
DATE:	06/29/20	
SCALE:	AS NOTED	
DRAWN BY:	WJS	

NOTES:

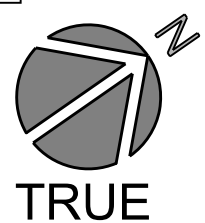
1. THE SAND FILTER SYSTEM, LOCATED AT THE NORTH EAST CORNER OF THE SITE, CURRENTLY FAILS DURING NORMAL STORM EVENTS CAUSING THE CDL PAD TO FLOOD AND BECOME UNUSABLE. IT IS BELIEVED THAT THE SYSTEM IS FAILING BECAUSE THE CLOSED SAND CHAMBERS ARE DETERIORATED AND DO NOT ALLOW FOR THE SOLID STEEL CHAMBER ACCESS GRATES TO SIT FLUSH ON THE CHAMBERS. THIS IS ALLOWING RUNOFF TO ENTER THE SAND CHAMBERS DIRECTLY. THESE SAND CHAMBERS ARE TO BE SEALED FROM RUNOFF AND BE WATER-TIGHT, AS DESIGNED.
2. CONTRACTOR IS TO CUT AND REBUILD AT MINIMUM THE TOP ONE-FOOT OF THE EXISTING STORM CHAMBERS AS NECESSARY TO ALLOW THE STEEL ACCESS COVERS TO SIT FLUSH WITH THE PAVEMENT. CONTRACTOR TO INSPECT ANY REBAR FOUND AND DETERMINE IF IT IS IN ACCEPTABLE CONDITION.
3. ANY REBAR FOUND IN UNUSABLE CONDITION IS TO BE REMOVED AND NEW REBAR TO MATCH EXISTING IS TO BE INSTALLED BY PINNING TO THE EXISTING.
4. ANY GRATES OR SOLID COVERS THAT ARE DILAPIDATED SHOULD BE REPLACED.
5. IN ADDITION TO REBUILDING THE CHAMBERS, THE CONTRACTOR IS TO REMOVE THE EXISTING FILTER SAND AND FILTER FABRIC, AND CLEAN ANY DEBRIS FROM EXISTING STONE AND INSTALL NEW FILER FABRIC AND FILTER SAND AS PER DNREC STANDARDS AND SPECIFICATIONS FOR SAND FILTER SYSTEM FOUND IN THE "POST CONSTRUCTION STORMWATER BMP STANDARDS AND SPECIFICATIONS".
6. ALL ELEMENTS REQUIRED TO BE REINSTALLED SHOULD BE DONE SO AT THE EXISTING ELEVATIONS, UNLESS DIRECTED OTHERWISE BY THE ENGINEER. CONTRACTOR TO SUBMIT SCOPE OF WORK PLAN TO ENGINEER FOR REVIEW PRIOR TO CONSTRUCTION.
7. ALL MATERIALS ARE TO BE REPLACED TO MATCH EXISTING CONDITIONS AND TO MATCH SPECIFICATIONS FOUND IN DNREC APPROVED PLANS. COPIES OF THE APPROVED DNREC PLAN CAN BE OBTAINED FROM THE ARCHITECT.
  - A. CONCRETE IS TO BE DELDOT CLASS A.
  - B. REBAR TO BE ASTM A-615 GRADE 60.
  - C. GRATE TO BE NEENAH FOUNDRY #R-4990-FX TYPE A OR EAST JORDAN #6900 OR #6950 TYPE M OR APPROVED EQUAL.
  - D. SOLID COVER TO BE - NEENAH FOUNDRY #R-4990-FX TYPE D OR EAST JORDAN #6900 OR #6950 TYPE A OR APPROVED EQUAL.



1

PARTIAL SITE PLAN - CDL PAD

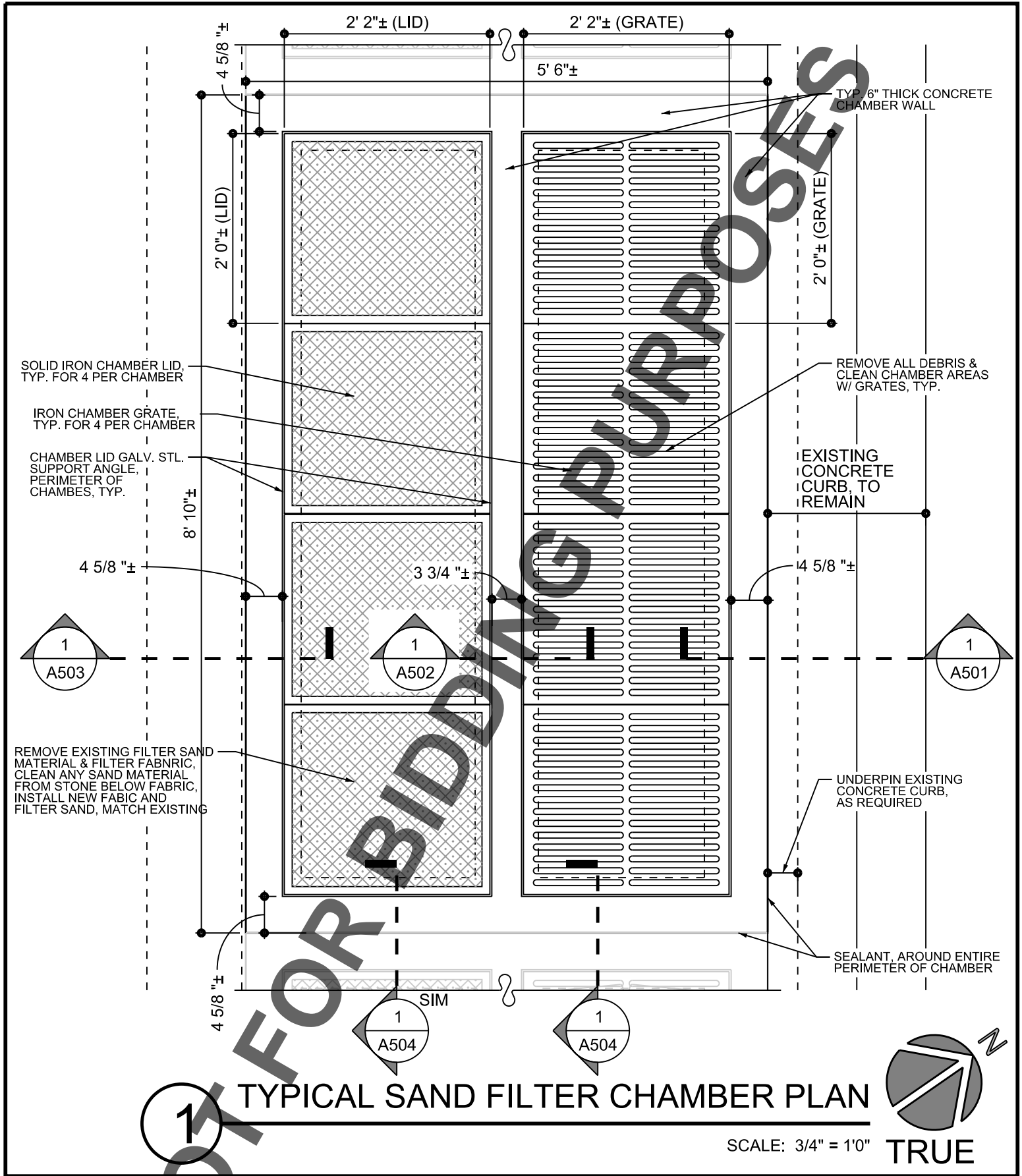
SCALE: 1" = 30'



Dover  
 309 S. Governors Ave  
 Dover, DE 19904  
 P: 302.734.7950  
 F: 302.734.7965  
 www.beckermorgan.com

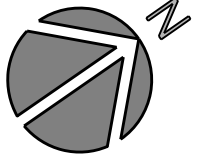
WILMINGTON DMV COMMERCIAL  
 DRIVERS LICENSE (CDL) TEST PAD  
 SAND FILTER REPAIRS  
 2230 HESSLER BLVD.  
 NEW CASTLE, DELAWARE

PARTIAL SITE PLAN		<b>C101</b> <small>COPYRIGHT © 2010</small>
PROJECT:	2015142.09	
DATE:	06/29/20	
SCALE:	AS NOTED	
DRAWN BY:	WJS	



**TYPICAL SAND FILTER CHAMBER PLAN**

SCALE: 3/4" = 1'0"



**TRUE**



Dover  
 309 S. Governors Ave  
 Dover, DE 19904  
 P: 302.734.7950  
 F: 302.734.7965  
 www.beckermorgan.com

**WILMINGTON DMV COMMERCIAL  
 DRIVERS LICENSE (CDL) TEST PAD  
 SAND FILTER REPAIRS**

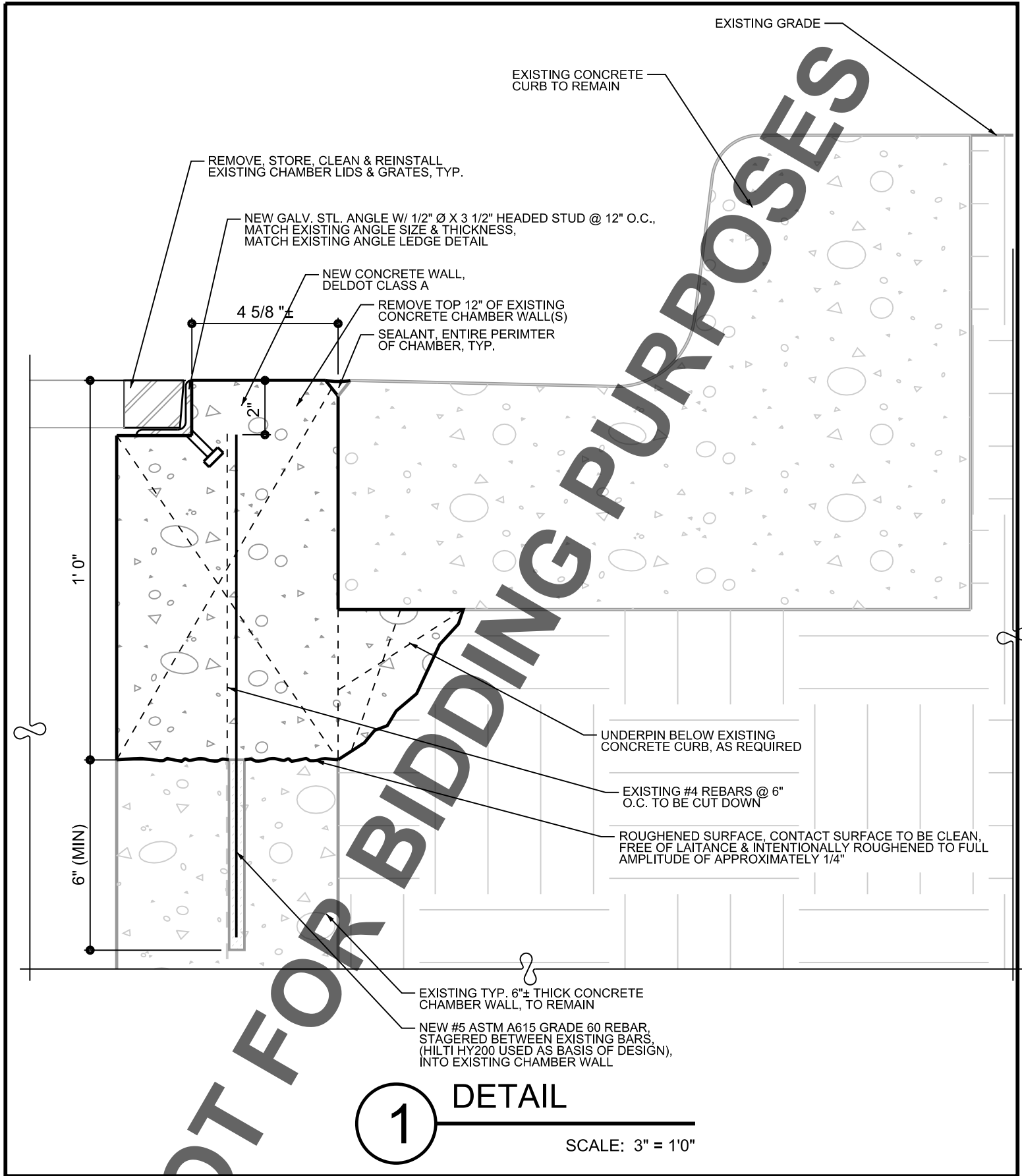
2230 HESSLER BLVD.  
 NEW CASTLE, DELAWARE

SAND FILTER CHAMBER PLAN

PROJECT:	2015142.09
DATE:	06/29/20
SCALE:	AS NOTED
DRAWN BY:	WJS

**A101**

COPYRIGHT © 2010



**1** **DETAIL**  
 SCALE: 3" = 1'0"

**BECKER MORGAN GROUP**  
 ARCHITECTURE ENGINEERING  
 Dover  
 309 S. Governors Ave  
 Dover, DE 19904  
 P: 302.734.7950  
 F: 302.734.7965  
 www.beckermorgan.com

**WILMINGTON DMV COMMERCIAL DRIVERS LICENSE (CDL) TEST PAD SAND FILTER REPAIRS**  
 2230 HESSLER BLVD.  
 NEW CASTLE, DELAWARE

DETAIL		<b>A501</b> <small>COPYRIGHT © 2010</small>
PROJECT:	2015142.09	
DATE:	06/29/20	
SCALE:	AS NOTED	
DRAWN BY:	WJS	

NEW GALV. STL. ANGLE W/ 1/2" Ø X 3 1/2" HEADED STUD @ 12" O.C., MATCH EXISTING ANGLE SIZE & THICKNESS, MATCH EXISTING ANGLE LEDGE DETAIL (STAGGER STUDS)

REMOVE, STORE, CLEAN & REINSTALL EXISTING CHAMBER LIDS & GRATES, TYP.

NEW CONCRETE WALL DELDOT CLASS A

3 3/4" ±

2"

REMOVE TOP 12" OF EXISTING CONCRETE CHAMBER WALL(S)

1' 0"

EXISTING #4 REBARS @ 6" O.C. TO BE CUT DOWN

6" (MIN)

ROUGHENED SURFACE, CONTACT SURFACE TO BE CLEAN, FREE OF LAITANCE & INTENTIONALLY ROUGHENED TO FULL AMPLITUDE OF APPROXIMATELY 1/4"

EXISTING TYP. 6" ± THICK CONCRETE CHAMBER WALL, TO REMAIN

NEW #5 ASTM A615 GRADE 60 REBAR, STAGGERED BETWEEN EXISTING BARS, (HILTI HY200 USED AS BASIS OF DESIGN), INTO EXISTING CHAMBER WALL

1

DETAIL

SCALE: 3" = 1'0"



Dover  
309 S. Governors Ave  
Dover, DE 19904  
P: 302.734.7950  
F: 302.734.7965  
www.beckermorgan.com

WILMINGTON DMV COMMERCIAL  
DRIVERS LICENSE (CDL) TEST PAD  
SAND FILTER REPAIRS

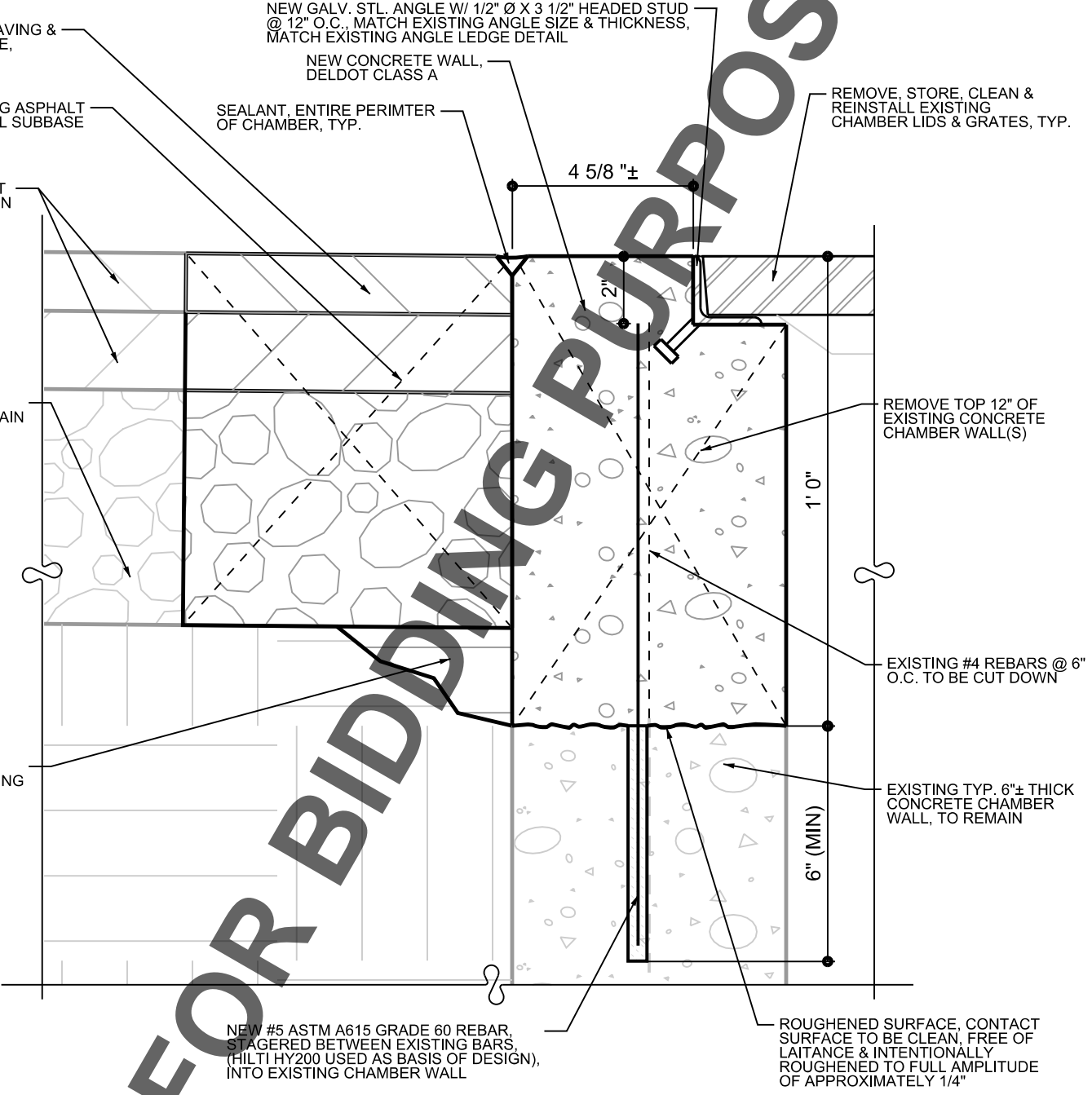
2230 HESSLER BLVD.  
NEW CASTLE, DELAWARE

DETAIL

PROJECT:	2015142.09
DATE:	06/29/20
SCALE:	NTS
DRAWN BY:	WJS

A502

COPYRIGHT © 2010



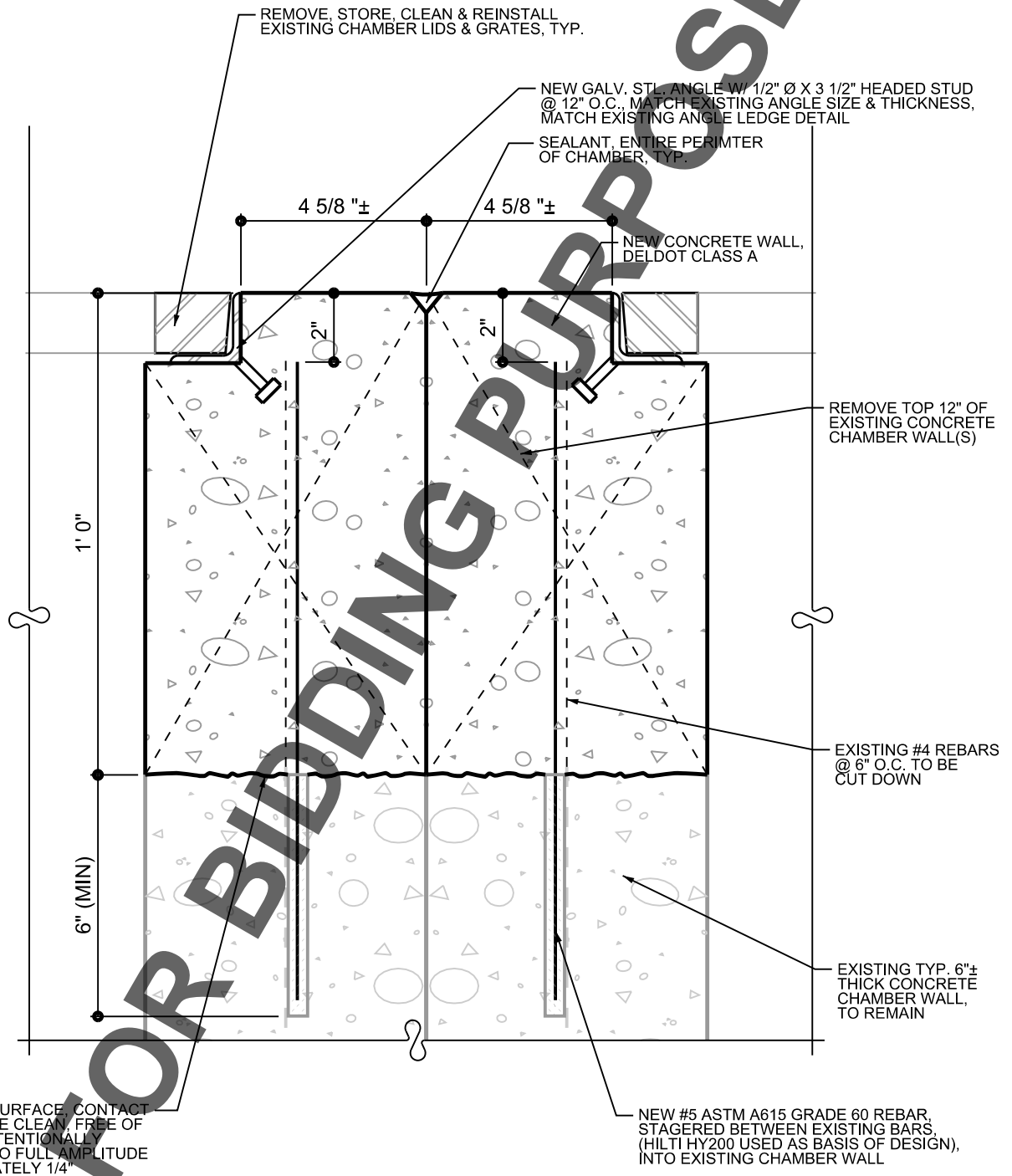
**1** DETAIL  
 SCALE: 3" = 1'0"



Dover  
 309 S. Governors Ave  
 Dover, DE 19904  
 P: 302.734.7950  
 F: 302.734.7965  
 www.beckermorgan.com

WILMINGTON DMV COMMERCIAL  
 DRIVERS LICENSE (CDL) TEST PAD  
 SAND FILTER REPAIRS  
 2230 HESSLER BLVD.  
 NEW CASTLE, DELAWARE

DETAIL		<b>A503</b> <small>COPYRIGHT © 2010</small>
PROJECT:	2015142.09	
DATE:	06/29/20	
SCALE:	AS NOTED	
DRAWN BY:	WJS	



**1** DETAIL

SCALE: 3" = 1'0"

**BECKER  
MORGAN  
GROUP**

Dover  
309 S. Governors Ave  
Dover, DE 19904  
P: 302.734.7950  
F: 302.734.7965

ARCHITECTURE  
ENGINEERING

www.beckermorgan.com

WILMINGTON DMV COMMERCIAL  
DRIVERS LICENSE (CDL) TEST PAD  
SAND FILTER REPAIRS

2230 HESSLER BLVD.  
NEW CASTLE, DELAWARE

DETAIL

PROJECT: 2015142.09  
DATE: 06/29/20  
SCALE: AS NOTED  
DRAWN BY: WJS

**A504**

COPYRIGHT © 2010