

**Addendum  
No. 2**

Date: March 15, 2017

Project: Delaware Archives Brick Sidewalk Replacement  
MC 1002000372

---

The work herein shall be considered part of the bid documents for the referenced project and carried out in accordance with the following supplemental instructions issued in accordance with the Contract Documents without change in Contract Sum or Contract Time. Acknowledge receipt of addendum on the bid form as indicated.

---

**General**

1. Permits and Inspection
  - a. The Brick Sidewalk Replacement Project and the Paving Project will proceed under a single permit from the City of Dover. The contractor for the Paving Project will be responsible for securing the permit.
  - b. The contractor for the Brick Sidewalk Replacement Project shall be responsible for arranging all inspections required for the Sidewalk Project.

**Changes to Drawings:**

1. A3.1 – ARCHITECTURAL SITE PLAN (Revised sheet is attached herein)
  - Revise hatch shading at sidewalk within Base Bid to clarify extent of brick with new concrete base.
  - Revise Construction Key Notes C-04 and C-07 to clarify extent of new curbing.
  - Delete Construction Key Note C-14.
2. A3.2 – DETAILS (Revised sheet is attached herein)
  - Detail 5/A3.2 – Revise hatch shading to clarify extent of brick with new concrete base and revise associated note.
  - Detail 6/A3.2 – Revise hatch shading to clarify extent of brick with new concrete base and revise associated note.
  - Detail 14/A3.2 – Revise to indicate existing depressed curb to remain.

**Changes to Project Manual:**

None

**Questions and Answers:**

None

**End**





SCALE: 1/16" = 1'-0"

## CONSTRUCTION KEY NOTES

- C-01 REMOVE EXISTING BRICK PAVERS AND MORTAR BED. EXISTING 4" CONCRETE PAVING BASE TO REMAIN. REMOVE DAMAGED PORTIONS OF EXISTING 4" CONCRETE PAVING BASE AS REQUIRED AND REPLACE WITH NEW 4" CONCRETE PAVING BASE WITH 6 x 6, W22 x W22 WWF AND STONE SUB-BASE. INSTALL NEW BRICK PAVERS ON NEW SAND BASE PER DETAIL "11.1/3.2".

C-02 REMOVE EXISTING BRICK TREADS & RISERS AND SAND BED AT STAIRS. EXISTING CONCRETE STAIR BASE TO REMAIN. REMOVE DAMAGED PORTIONS OF EXISTING CONCRETE STAIR BASE AS REQUIRED AND REPLACE WITH NEW TREADS STAIR BASE WITH REINFORCING AND STONE SUB-BASE PER DETAIL "15.1/3.2". INSTALL NEW CAST STONE TREADS AND RISERS PER DETAIL "15.1/3.2". PROVIDE PIECE CALLOUT TO ARCHITECT FOR REVIEW. ALL PIECES TO BE EQUAL IN LENGTH.

C-03 REMOVE EXISTING CURB RAMPS INCLUDING BRICK PAVERS. CONCRETE DETECTABLE WARNING PAVERS, SAND BASE, CONCRETE BASE AND STONE SUB-BASE. REMOVE EXISTING CONCRETE DEPRESSED CURBS AND STONE BASE. INSTALL NEW CONCRETE CURB RAMPS, CONCRETE DETECTABLE WARNING PAVERS, SAND BASE, CONCRETE BASE AND STONE SUB-BASE PER DETAIL "12.1/3.2". INSTALL NEW CONCRETE DEPRESSED CURBS AND STONE BASE PER DETAIL "12.1/3.2". NEW ASPHALT STREET PAVING BY OTHERS TO OCCUR CONCURRENTLY. CONTRACTOR TO COORDINATE INSTALLATIONS.

C-04 REMOVE EXISTING BRICK PAVERS. CONCRETE DETECTABLE WARNING PAVERS AND SAND BED. EXISTING 4" CONCRETE PAVING BASE TO REMAIN. REMOVE DAMAGED PORTIONS OF EXISTING 4" CONCRETE PAVING BASE AS REQUIRED AND REPLACE WITH NEW 4" CONCRETE PAVING BASE WITH 6 x 6, W22 x W22 WWF AND STONE SUB-BASE. INSTALL NEW BRICK PAVERS ON NEW SAND BASE PER DETAIL "14.1/3.2". NEW ASPHALT STREET PAVING BY OTHERS TO OCCUR CONCURRENTLY. CONTRACTOR TO COORDINATE INSTALLATIONS.

C-05 INSTALL NEW PAINTED IRON HANDRAIL SYSTEM WHERE SHOWN PER DETAIL "8.1/3.2".

C-06 EXISTING MASONRY CHECK WALLS TO REMAIN

C-07 REMOVE EXISTING SIDEWALK RAMP PAVERS, CONCRETE BASE, STONE SUB-BASE AND TAPERED CURB. INSTALL NEW BRICK PAVERS ON NEW CONCRETE BASE WITH 6 x 6, W22 x W22 WWF ON STONE BASE. INSTALL NEW TAPERED CURB.

C-08 REMOVE EXISTING CONCRETE SLAB AND UTILITY ACCESS PANEL AND EXCAVATE FOR NEW PAVING. INSTALL NEW UTILITY ACCESS DORT TO MATCH EXISTING. IN NEW BRICK PAVERS AND NEW CONCRETE BASE WITH 6 x 6, W22 x W22 WWF ON STONE SUB-BASE.

C-09 AT HATCHED AREA OR ROADWAY. REMOVE ROADWAY PAVERS & BASE. INSTALL NEW CURB. INSTALL COMPACTED BACKFILL AND COORDINATE PAVEMENT DEMO AND INSTALLATION OF NEW ASPHALT PAVING BY OTHERS. SEE DETAIL "14.1/2".

C-10 REMOVE EXISTING CAULK JOINT BETWEEN EXISTING CONCRETE PAVING TO REMAIN, AND EXISTING EXTERIOR BUILDING WALL. INSTALL NEW CAULK JOINT AND BACKER ROD.

C-11 INSTALL NEW CAULK JOINT AND BACKER ROD AT HEAVY LINE WHERE INDICATED. BETWEEN NEW BRICK PAVERS AND EXISTING OR NEW CONCRETE CURB. PAVING OR STAIR TREADS.

C-12 WHERE SHOWN SHADED. REMOVE EXISTING BRICK PAVERS, CONCRETE BASE, STONE SUB-BASE AND CONCRETE CURB AND EXCAVATE FOR NEW DEPRESSED CURB AND LOWERED SIDEWALK. INSTALL NEW LOWERED BRICK PAVERS ON CONCRETE PAVING BASE WITH 6 x 6, W22 x W22 WWF ON STONE SUB-BASE AND DEPRESSED CURB AT EXISTING ROADWAY ELEVATION. SEE DETAIL "15.1/3.2".

C-13 ALTERNATE #6 - REMOVE EXISTING CONCRETE PAVING & BASE AND INSTALL NEW CONCRETE PAVING AND BASE WHERE SHOWN HATCHED. SEE DETAIL "2.2/3.1".

C-14

C-15 AT EXISTING ADA PUSH-BUTTON PEDESTAL. REMOVE UNDERGROUND CONDUITS TO BUILDING. AT BELOW-GRADE FOUNDATION. EXPOSE EXPOSED SEAL. EXPOSED SEAL. CONDUIT PENETRATION AND INSTALL NEW WATERIGHT SEAL.

ALTERNATE #6  
CONC. PAVING SECTION




SCALE: 1 1/2" = 1'-0'

STREET PAVING IS SCHEDULED TO OCCUR CONCURRENTLY UNDER A SEPARATE CONTRACT BY OTHERS (SEE ATTACHED PAVING PLAN FOR REFERENCE ONLY). THE CONTRACTOR FOR THIS PROJECT IS TO COORDINATE THE ELEVATION OF THE NEW CURB CUT RAMP(S) (WHERE NOTED ON PLAN), WITH THE STREET PAVING CONTRACTOR PERFORMING THE CONCURRENT STREET PAVING PROJECT. FINAL CONCRETE CURB ELEVATION IS TO BE FLUSH WITH THE FINAL ASPHALT STREET ELEVATION AT ALL LOCATIONS.

### GENERAL CONSTRUCTION NOTES

1. CONTRACTOR IS TO PROVIDE TEMPORARY PROTECTION OF ALL EXISTING SURROUNDING AND ADJACENT BRICK WALLS THAT AREA TO REMAIN.
2. CONTRACTOR IS TO PROVIDE TEMPORARY PROTECTION OF ALL EXISTING LANDSCAPE AND VEGETATION, INCLUDING BUT NOT LIMITED TO GRASS, PLANTINGS, FLOWERS, TREES, AND TREE ROOTS.
3. CONTRACTOR IS TO FIELD VERIFY ALL LAYOUTS AND DIMENSIONS PRIOR TO START OF DEMOLITION. NEW BRICK LAYOUT AND PATTERN IS TO MATCH EXISTING. CONTRACTOR IS RESPONSIBLE FOR DOCUMENTING ALL EXISTING PATTERNS PRIOR TO DEMOLITION.
4. CONTRACTOR IS RESPONSIBLE FOR PROTECTION OF EXISTING SUBSTRATE MATERIAL TO REMAIN.
5. CONTRACTOR IS RESPONSIBLE TO REMOVE ALL DISPOSABLE MATERIAL EACH NIGHT DURING CONSTRUCTION.
6. ONE MAIN EGRESS PATH MUST REMAIN OPEN FOR USE EITHER STAIRS OR RAMPY INTO THE BUILDING DURING NORMAL FALCOURT COURT HOURS OF OPERATION.

HATCH LEGEND

-  BRICK HATCH INDICATES NEW BRICK PAVING WITHOUT MORTAR. NEW BRICKS TO MATCH EXISTING TO REMAIN B TYPE: PINE HALL, FULL RANGE COLOR, 4" x 8" x 2.25". REFER TO THE FOLLOWING PAGES FOR INSTALLATION INFORMATION.
-  BRICK HATCH WITH SHADING INDICATES NEW BRICK PAVING ON NEW 4" CONCRETE BASE WITH 6 x 6, W2.0 x W2.9 W/WF STONE SUB-BASE.
-  CIRCLE HATCH INDICATES THE EXTENT OF TRUNCATED DOME DETECTABLE WARNING PAVERS.

REVISIONS	
DESCRIPTION	DATE
1 ADDENDUM 2	03/15/17

STATE OF DELAWARE  
COMB / DIVISION OF FACILITIES MANAGEMENT

DELAWARE PUBLIC ARCHIVES PAVING PROJECT

121 MARTIN LUTHER KING, JR. BLVD. NORTH  
DOVER, DE 19901

DOVER, DE 19901

# PROJECT

SHEET TITLE

ARCHITECTURAL SITE  
PLAN

**ISSUED FOR  
BIDDING**  
FEBRUARY 10, 2017

DRAWN	CHK'D/DESIGNED
AM	PC

DISCIPLINE  
A

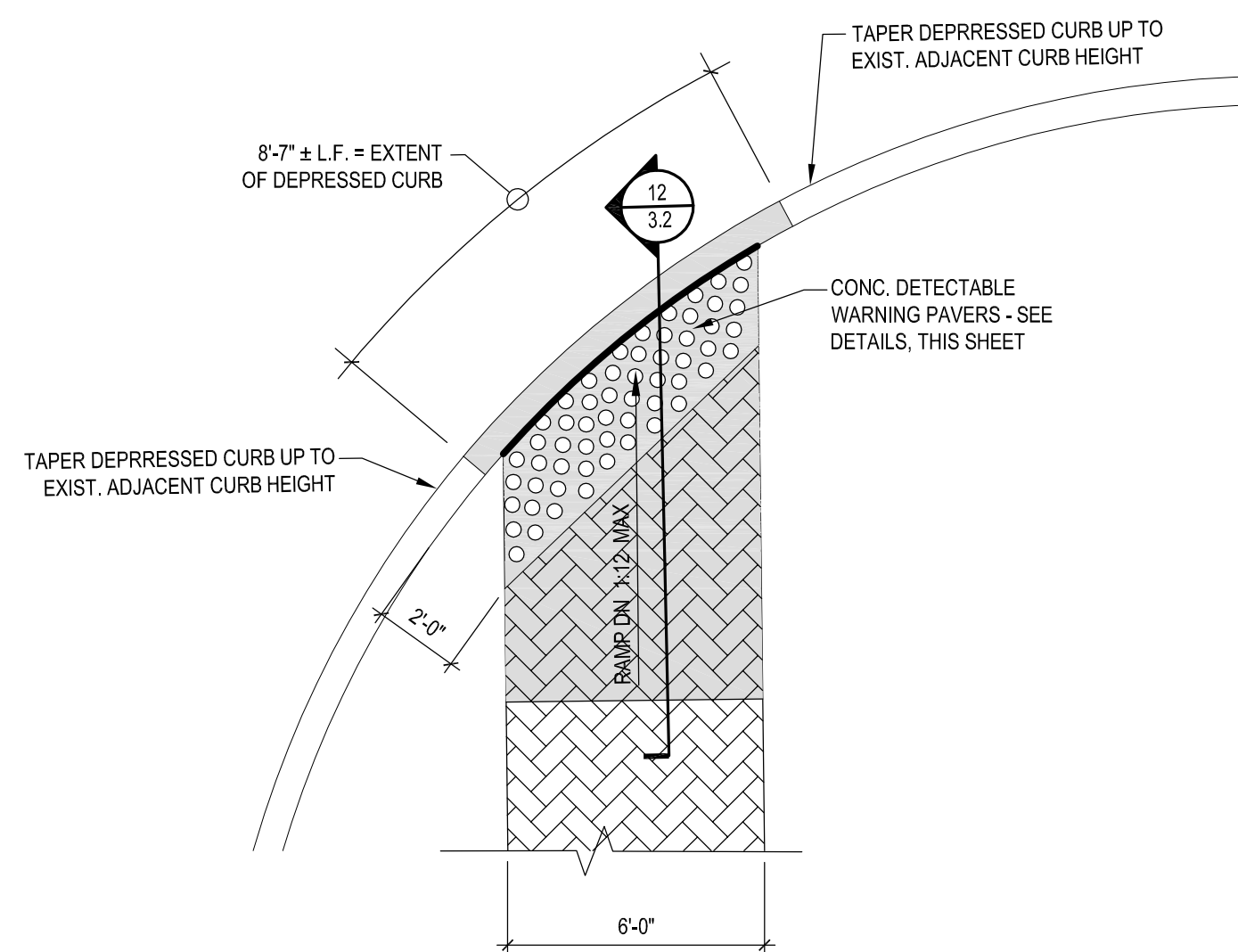
PROJECT NO.

1 2 3 4 5

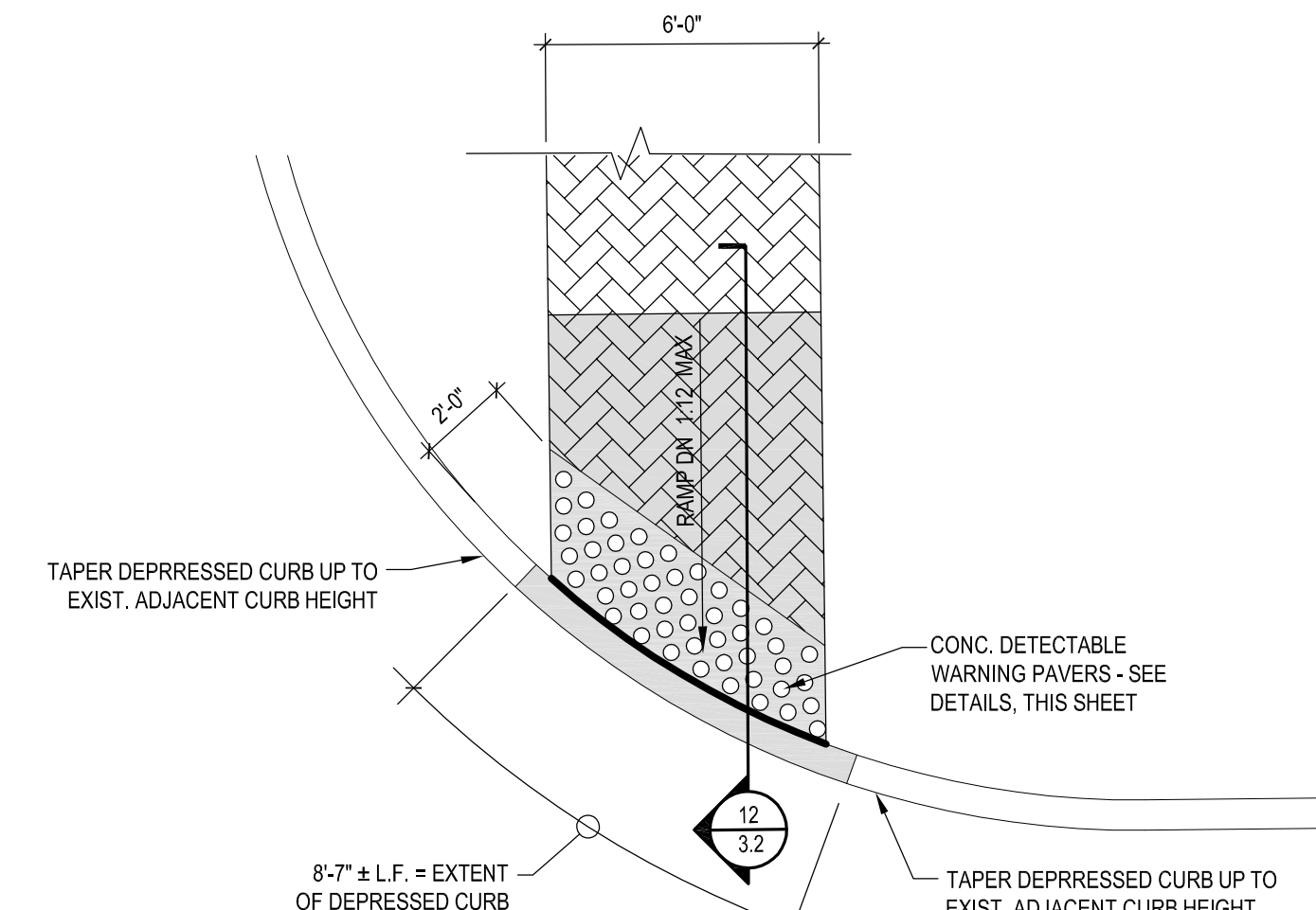
### 3.1

16062

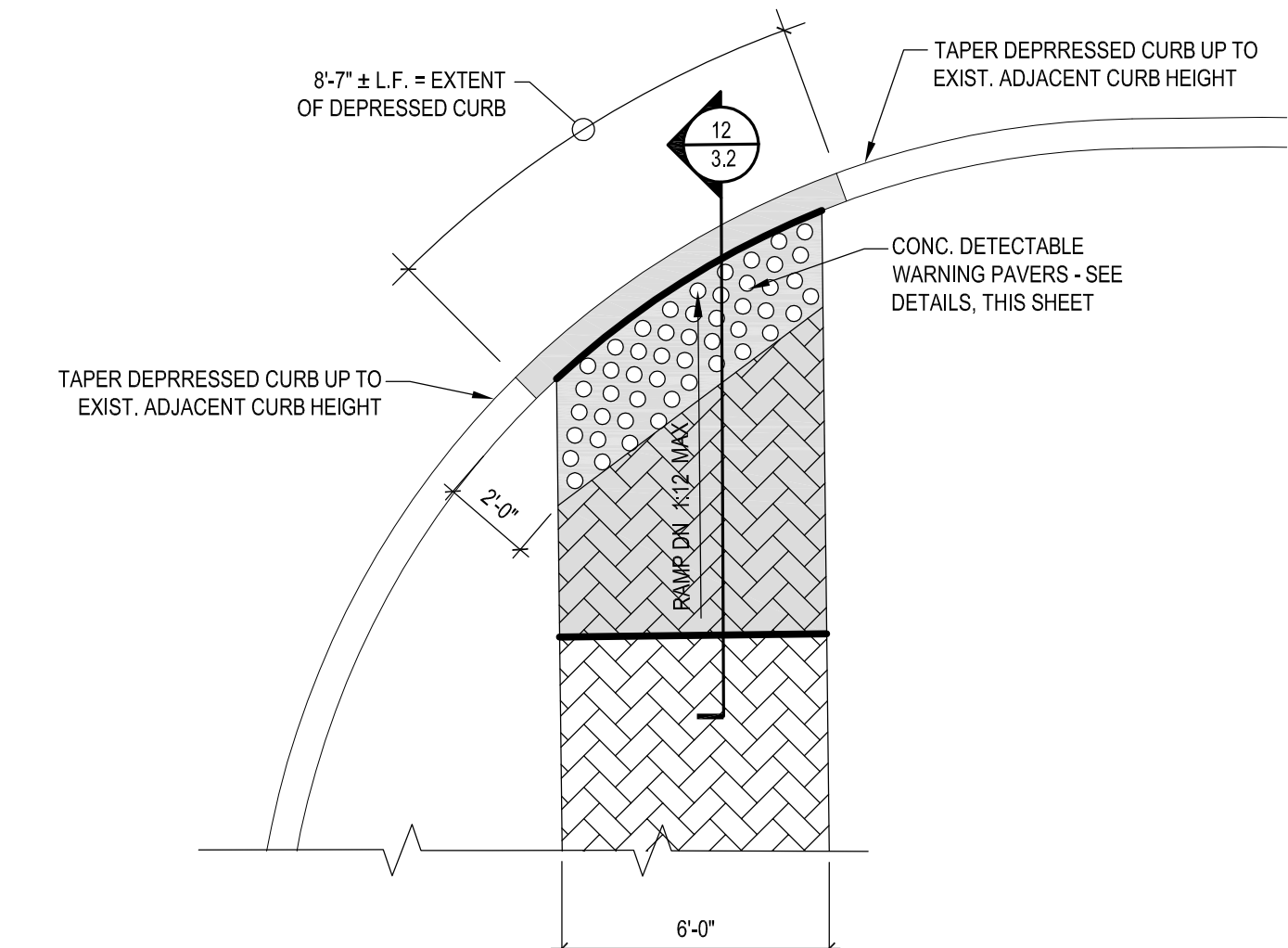




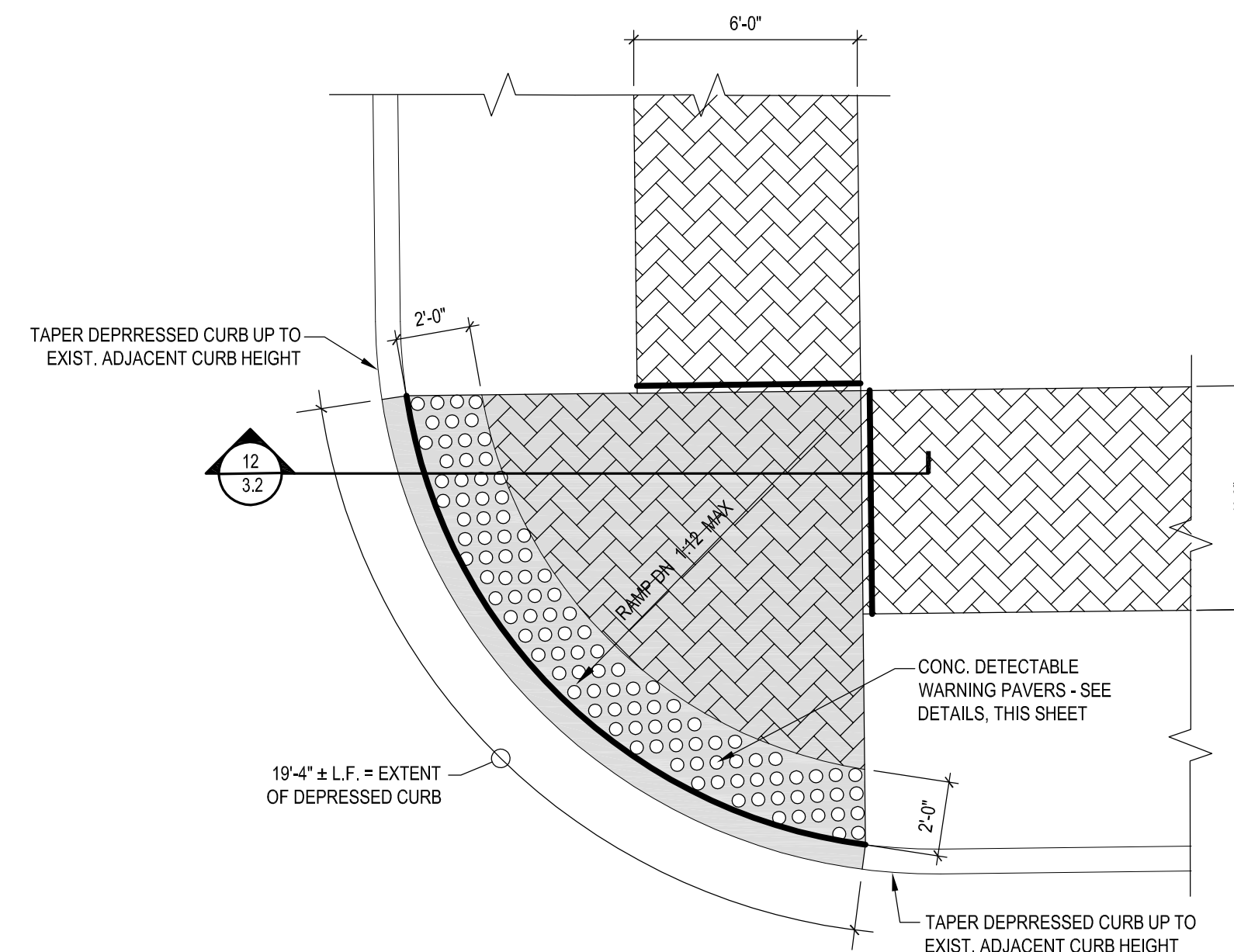
1 CURB CUT RAMP PLAN - ALT. # 3  
3.2 SCALE: 1/4" = 1'-0"



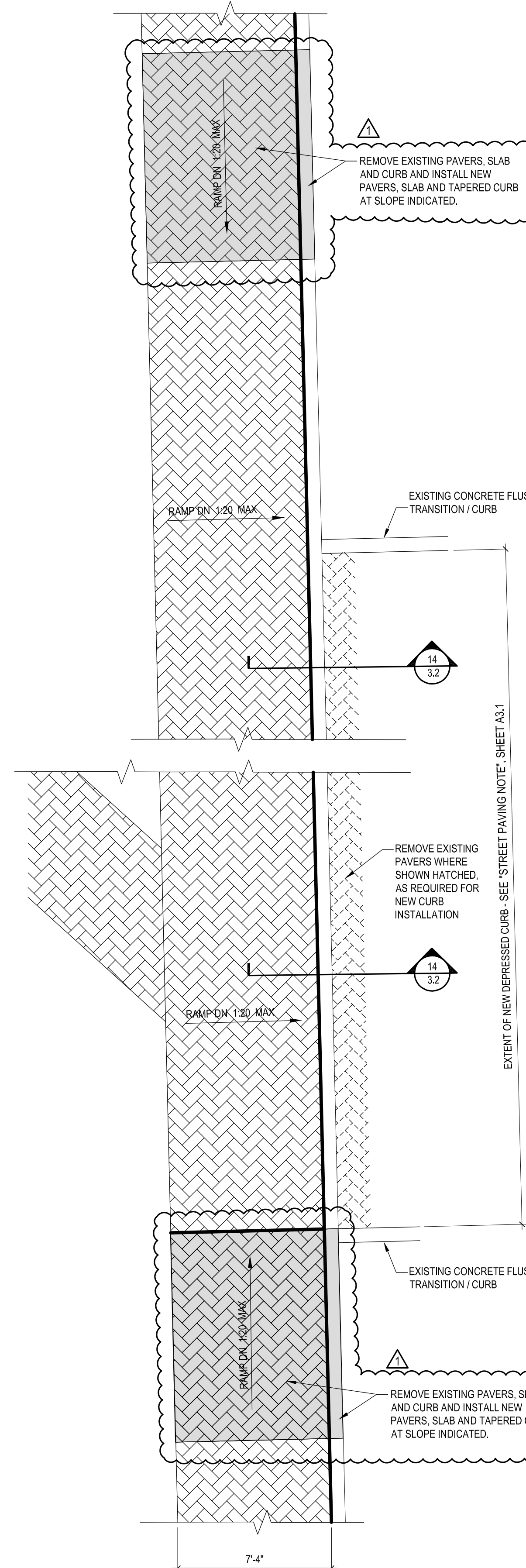
2 CURB CUT RAMP PLAN - ALT. # 3  
3.2 SCALE: 1/4" = 1'-0"



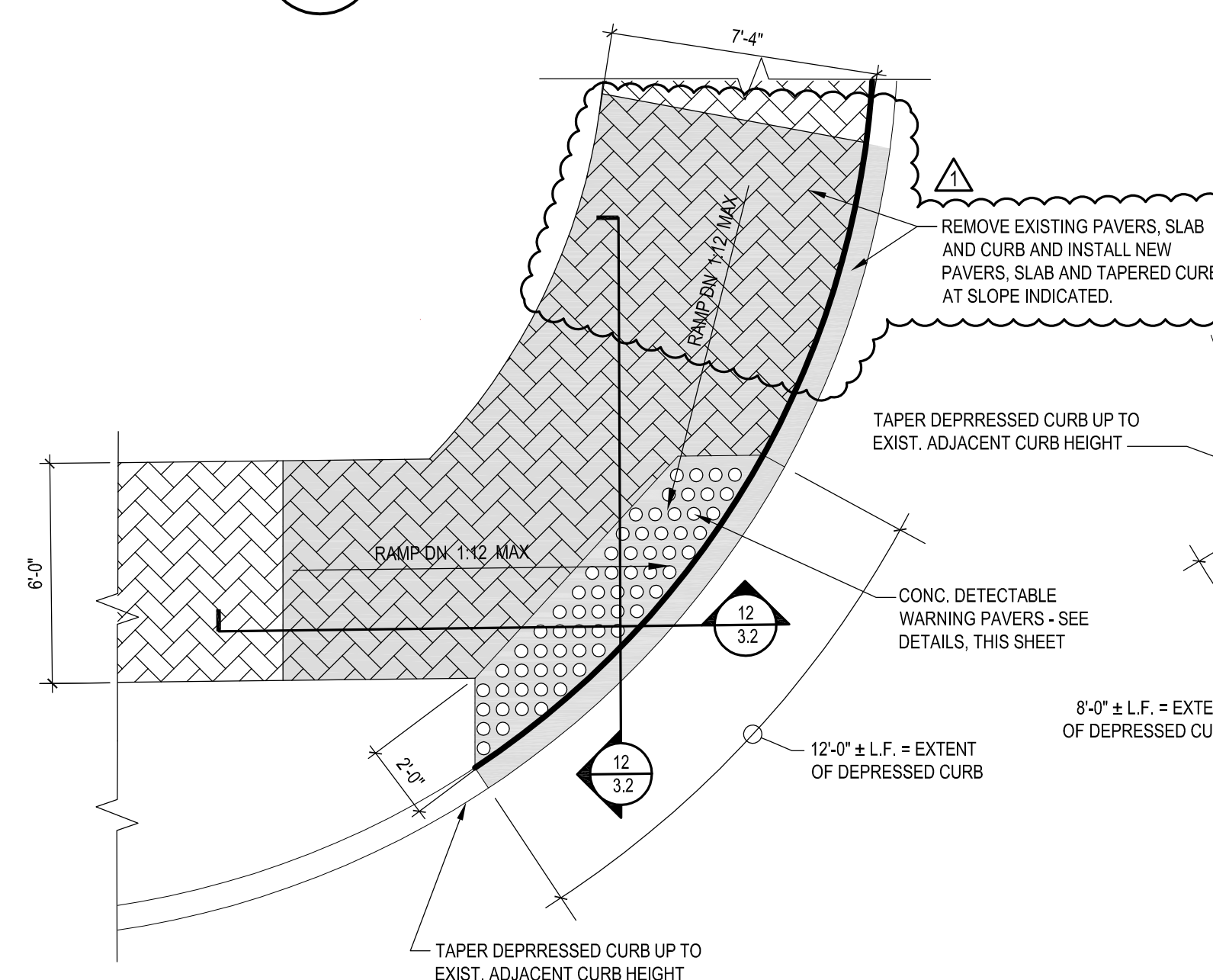
3 CURB CUT RAMP PLAN - ALT. # 2  
3.2 SCALE: 1/4" = 1'-0"



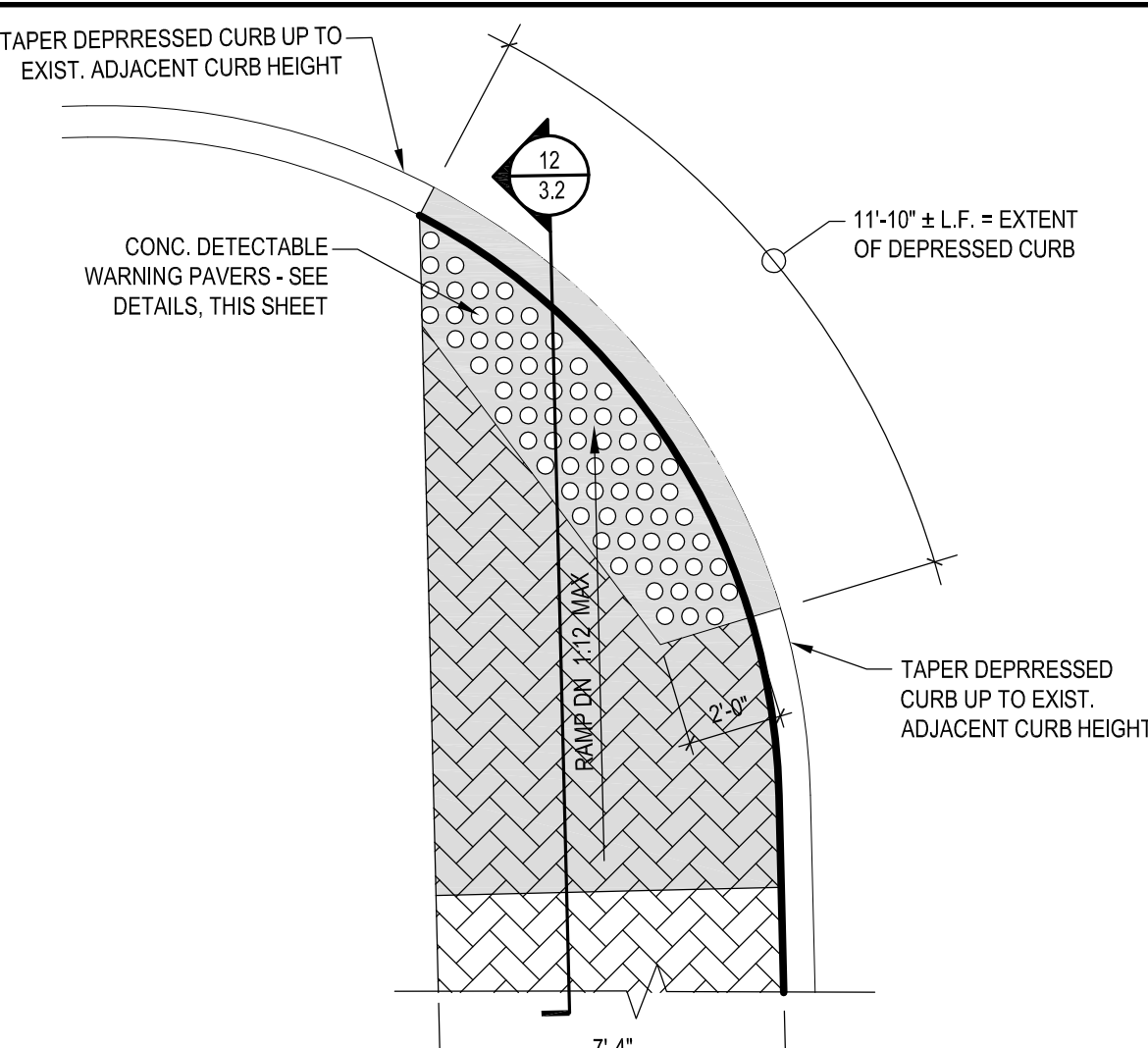
4 CURB CUT RAMP PLAN - ALT. # 1  
3.2 SCALE: 1/4" = 1'-0"



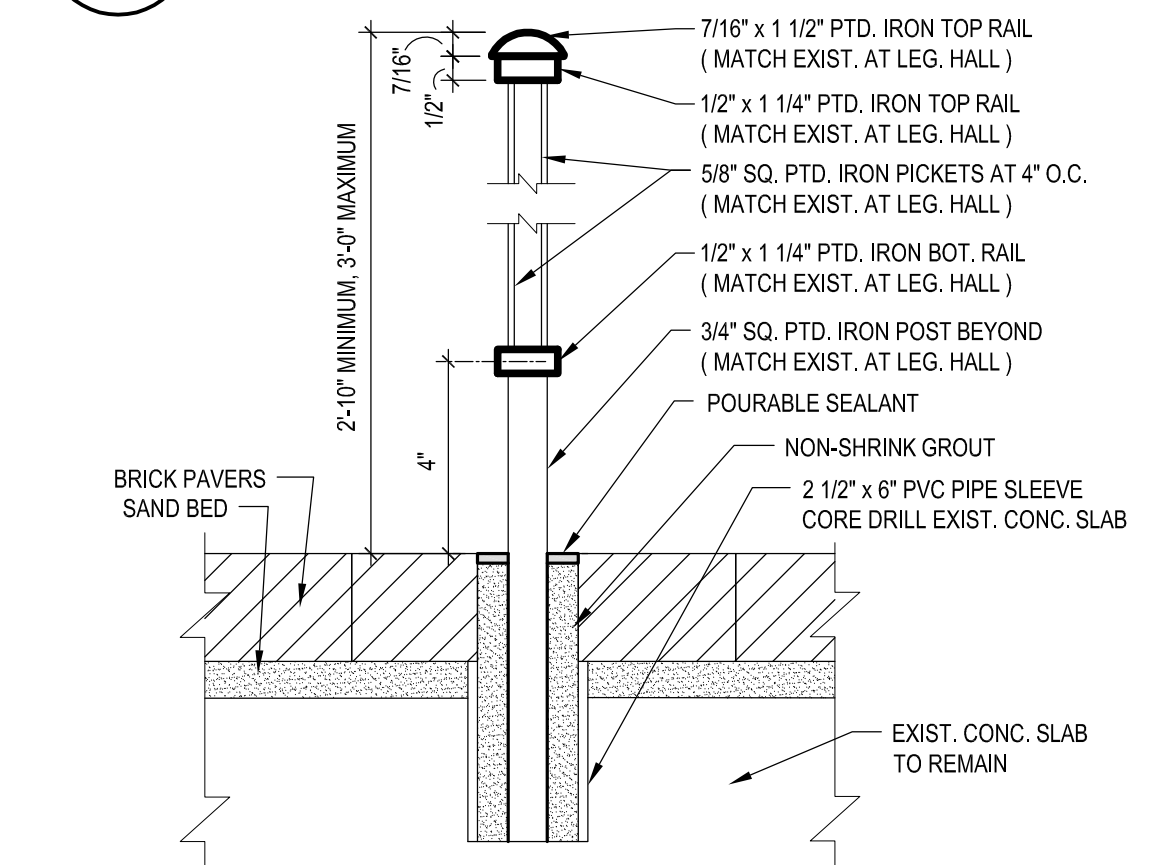
5 CURB CUT RAMP PLAN - BASE BID  
3.2 SCALE: 1/4" = 1'-0"



6 CURB CUT RAMP PLAN - BASE BID  
3.2 SCALE: 1/4" = 1'-0"



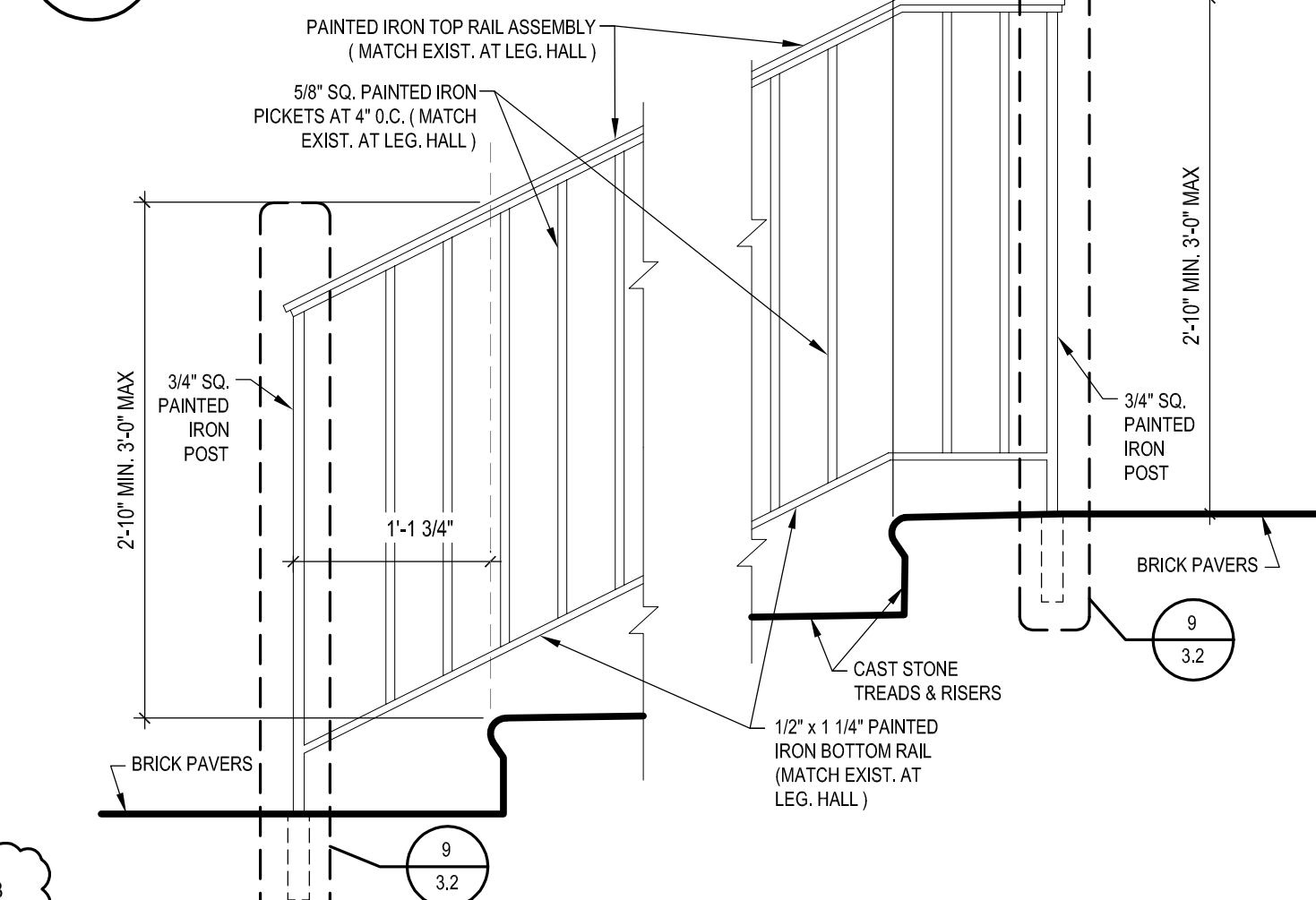
10 CURB CUT RAMP PLAN - BASE BID  
3.2 SCALE: 1/4" = 1'-0"



9  
3.2

TYP. HANDRAIL SECTION

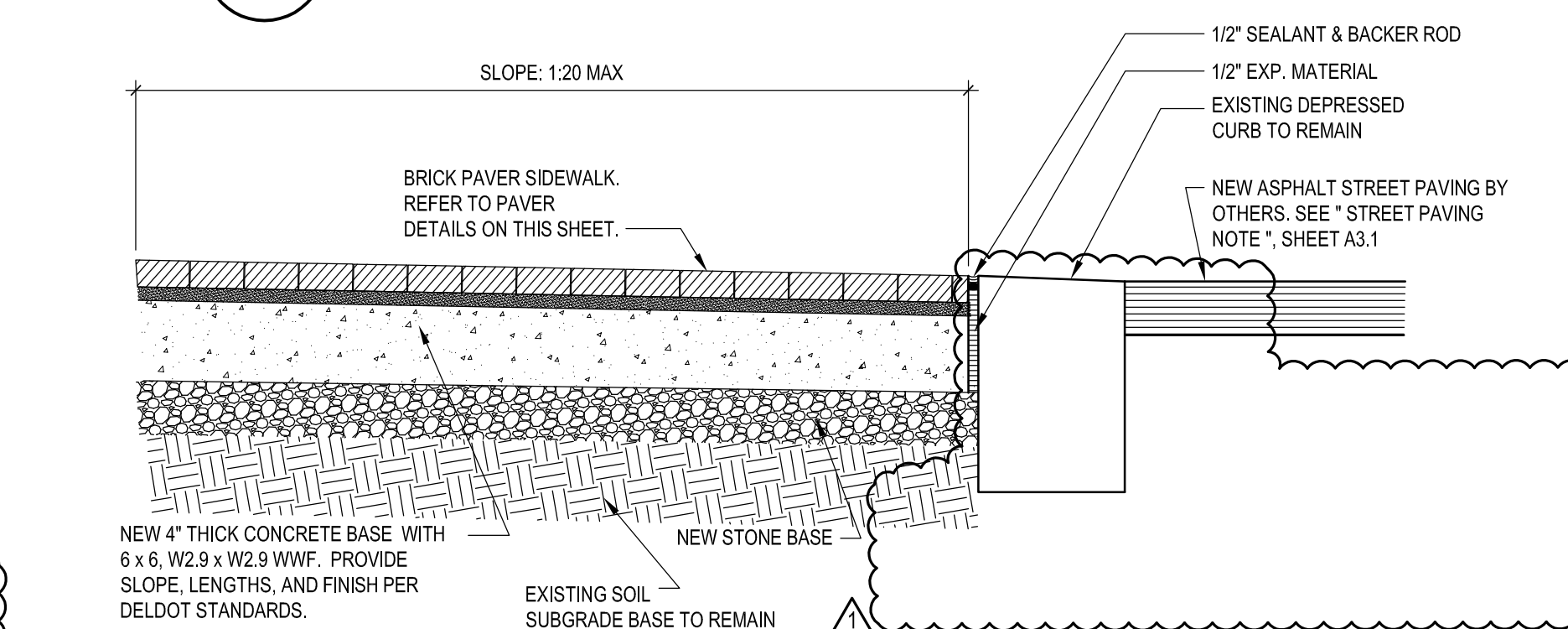
SCALE: 1" = 1'-0"



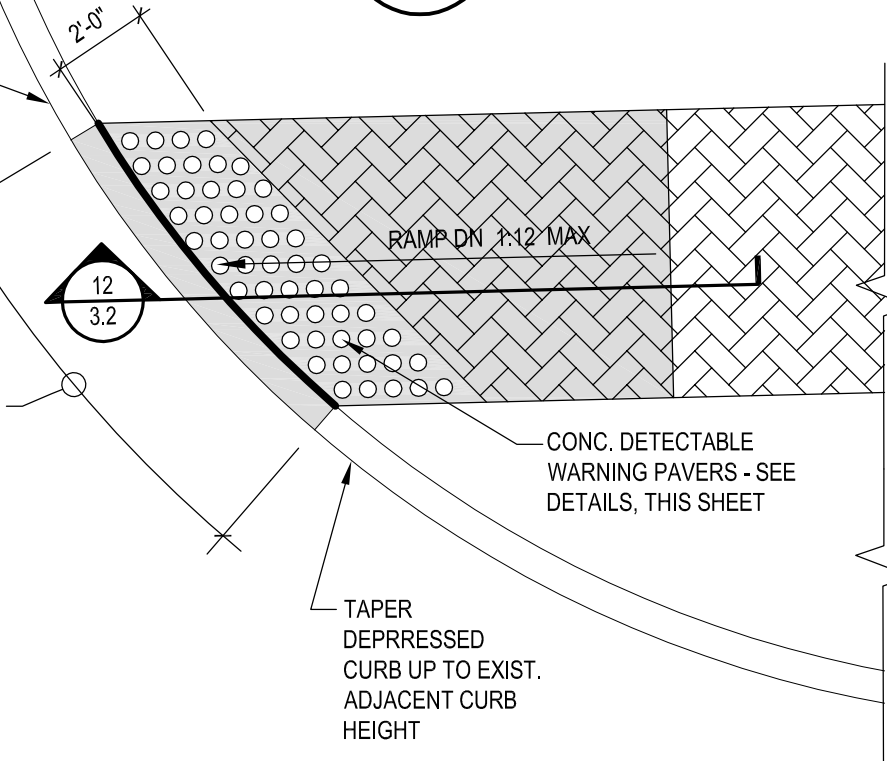
8  
3.2

TYP. STAIR SECTION

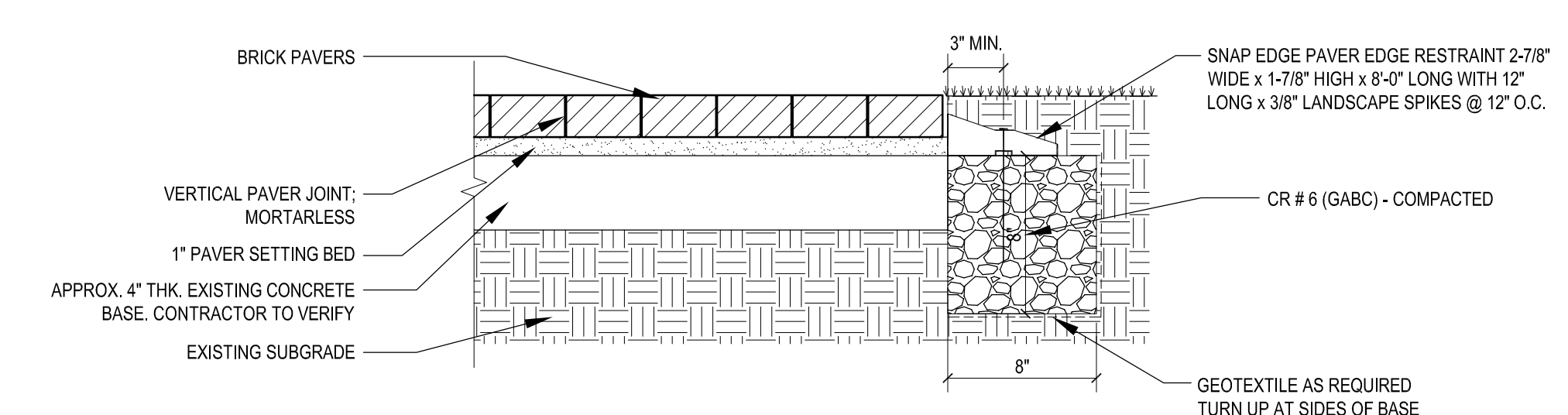
SCALE: 1" = 1'-0"



14 DEPRESSED SIDEWALK & CURB DETAIL  
3.2 SCALE: 1" = 1'-0"



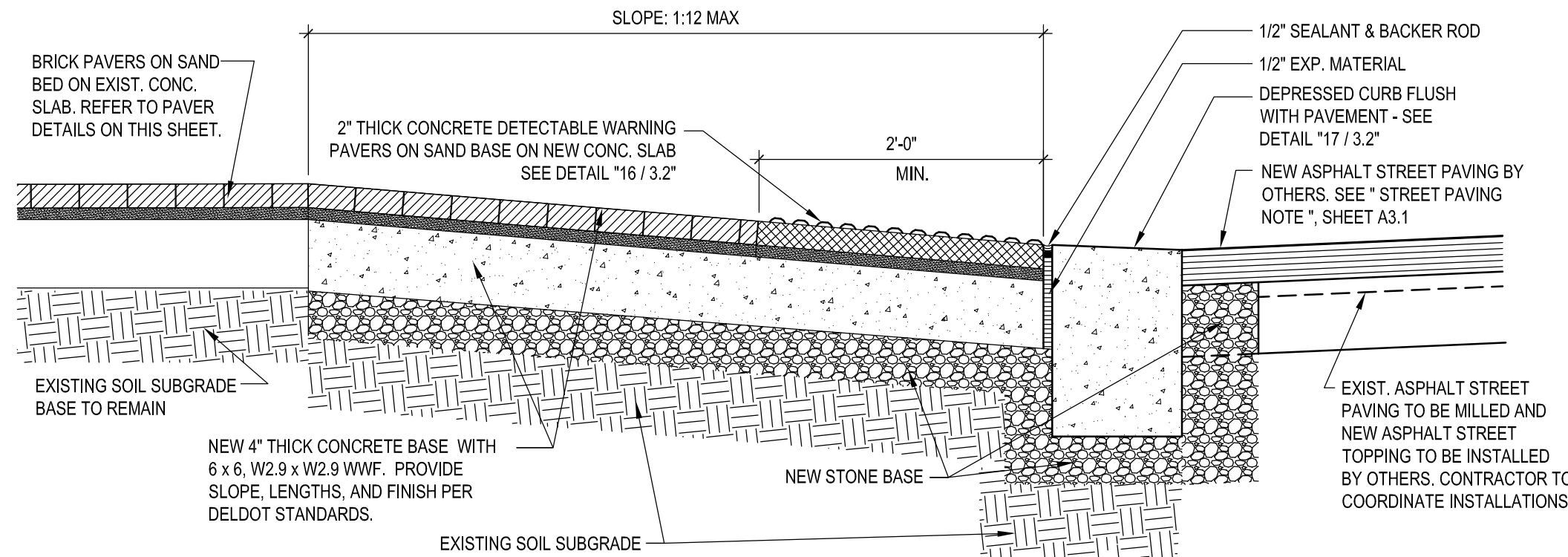
7 CURB CUT RAMP PLAN - BASE BID  
A3.2 SCALE: 1/4" = 1'-0"



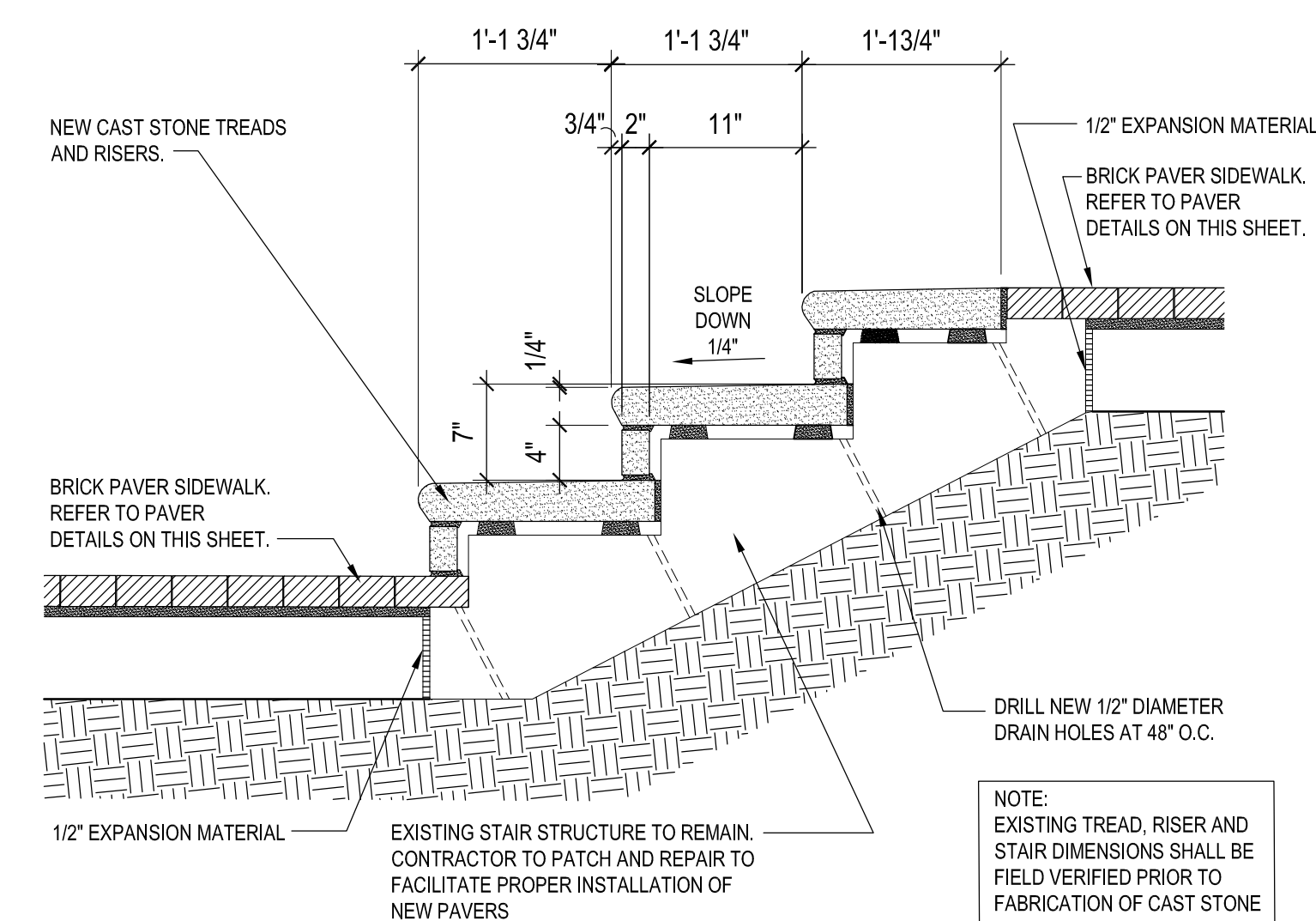
11  
3.2

TYPICAL PAVER SECTION

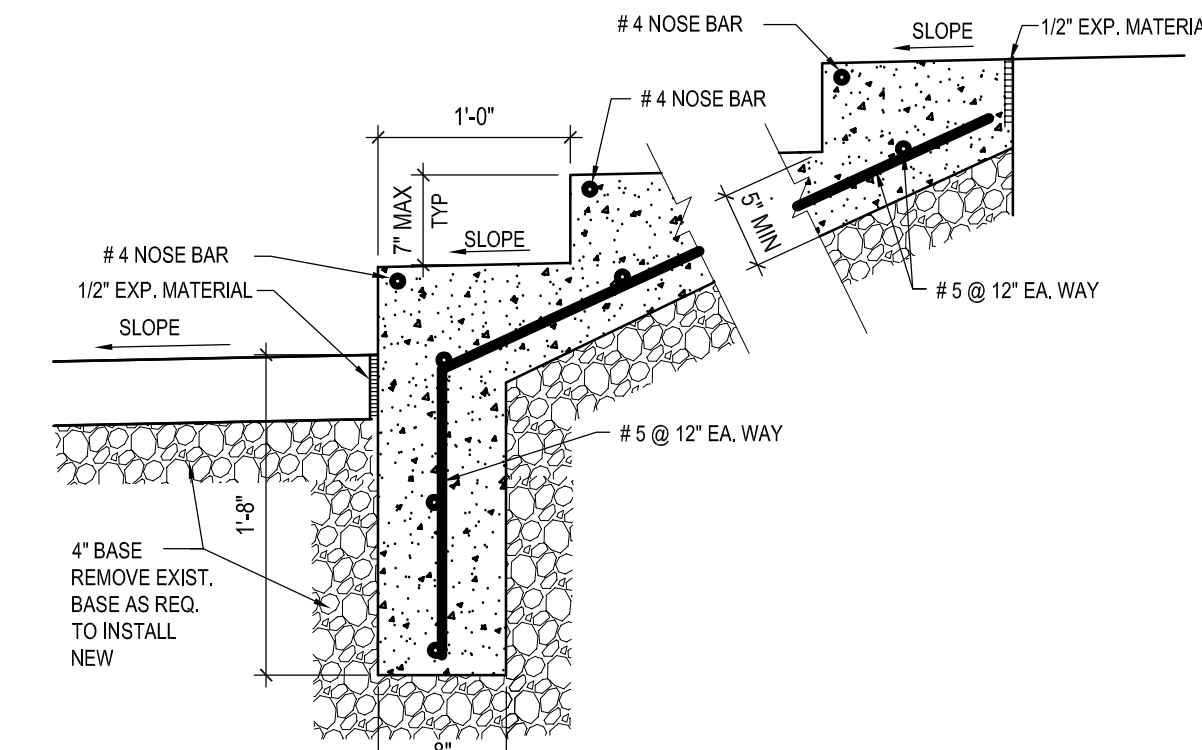
SCALE: 1 1/2" = 1'-0"



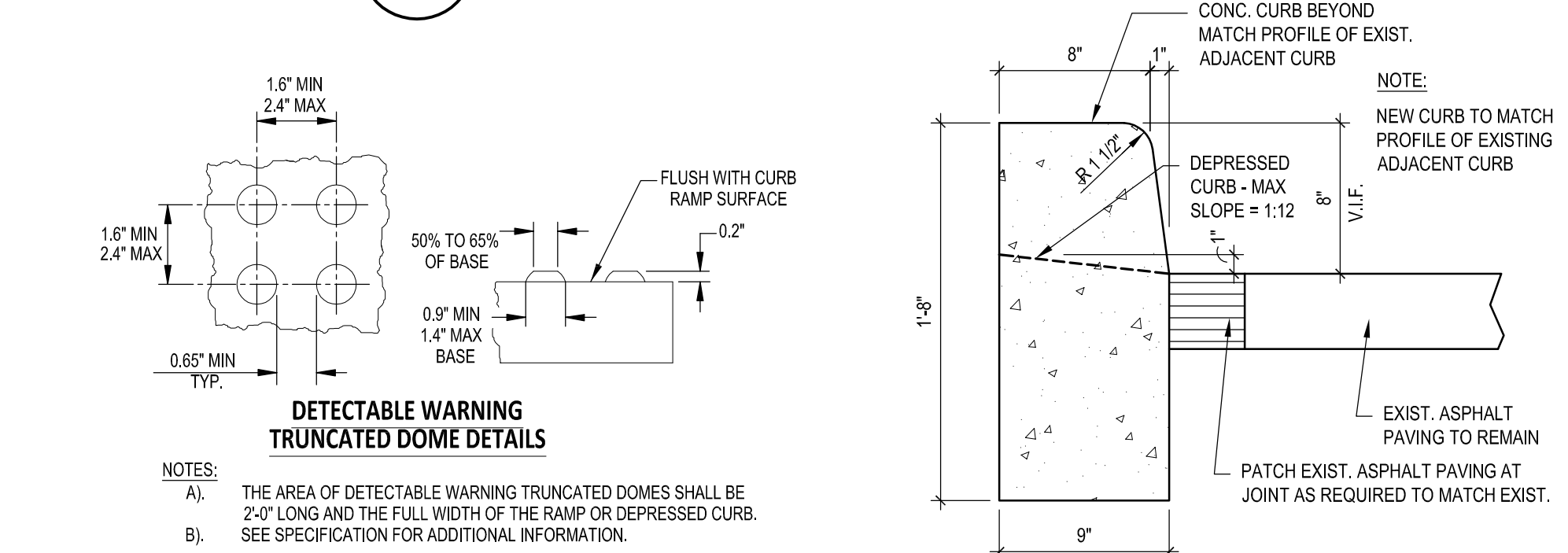
12 CURB CUT RAMP SECTION  
3.2 SCALE: 1" = 1'-0"



13 TYP. STAIR SECTION  
3.2 SCALE: 1" = 1'-0"



15 NEW CONC. STAIR BASE AT REPLACEMENT  
3.2 SCALE: 1" = 1'-0"



16  
3.2

DETECTABLE WARNING DETAILS

NOT TO SCALE

17  
3.2

**TYP. CURB DETAIL**

SCALE: 1 1/2" = 1'-0"

REVISIONS	
DESCRIPTION	DATE
1 ADDENDUM 2	03/15/17