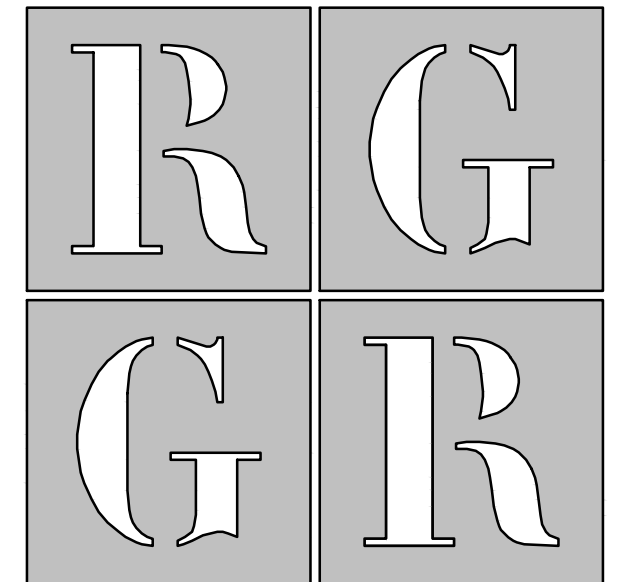


LAKE FOREST SCHOOL DISTRICT

LAKE FOREST HIGH SCHOOL
 PAVING IMPROVEMENTS
 5423 KILLENS POND ROAD, FELTON, DE 19943



OMB / DIVISION OF FACILITIES MANAGEMENT
 540 SOUTH DUPONT HIGHWAY
 SUITE 1, THIRD FLOOR,
 DOVER, DELAWARE 19901



ARCHITECTS
R G Architects, LLC
 200 W Main St Middletown, DE 19709
 302.376.8100 302.376.9851 fax
 www.rgarchitects.net

ISSUED FOR:

ISSUED FOR BIDDING AUGUST 2, 2018

PROJECT INFO:

LAKE FOREST SCHOOL DISTRICT

**LAKE FOREST
 HIGH SCHOOL
 PAVING IMPROVEMENTS**

5423 KILLENS POND ROAD
 FELTON, DE 19943

SHEET INFO:

PROJECT NO: 18024
 DRAWN BY: JAA
 CHECKED BY: RAG
 SCALE: N.T.S.
 DATE: 2 AUGUST 2018

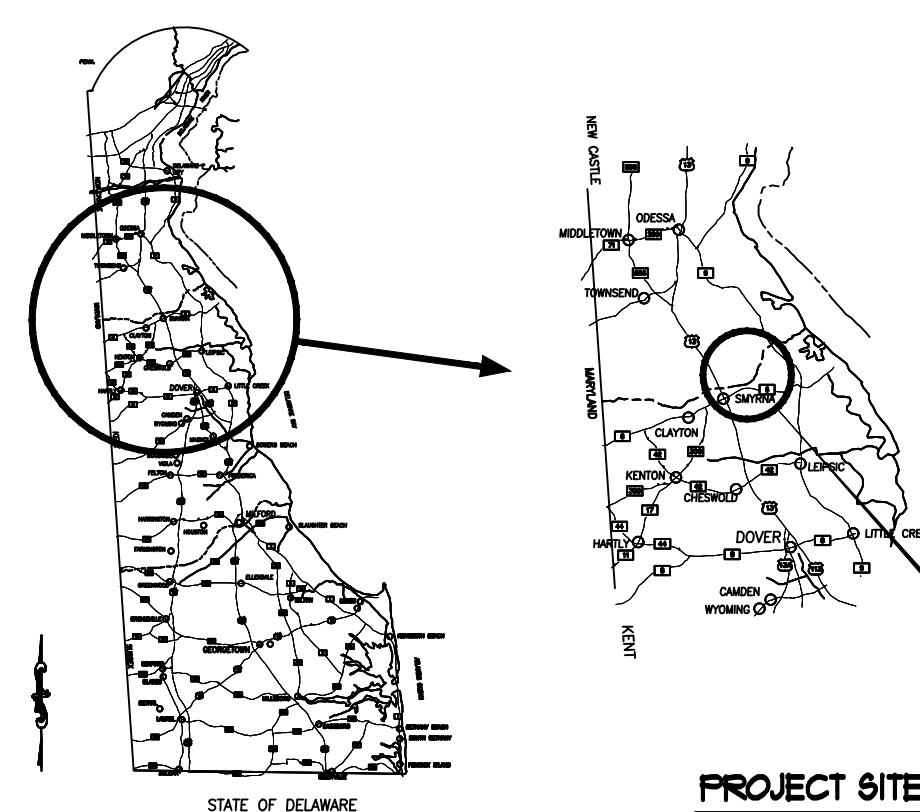
TITLE & NO.:

Copyright - R G Architects - 2018

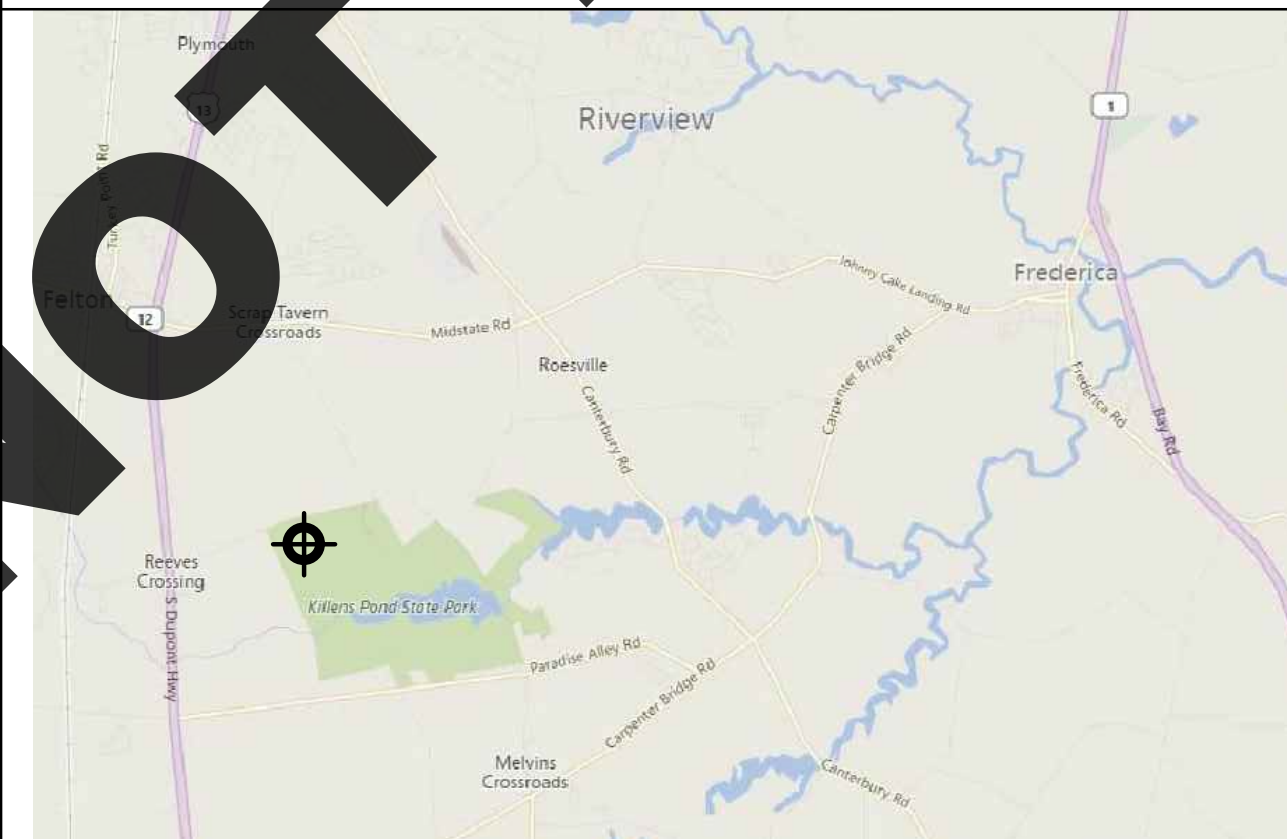
TITLE SHEET

T10-01

AREA MAP



VICINITY MAP



LOCAL MAP

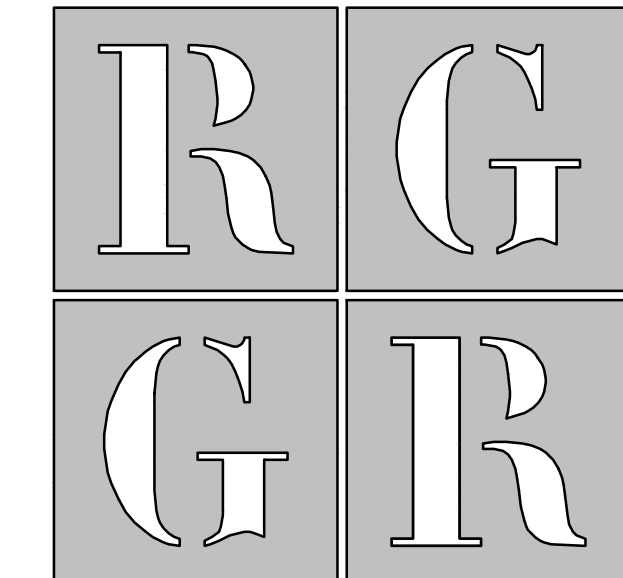


DRAWING LIST

- GENERAL**
- T10-01 TITLE SHEET
 - T10-02 SYMBOLS & ABBREVIATIONS
- ARCHITECTURAL**
- D10-01 DEMOLITION PLAN
 - A10-01 SITE PLAN
 - A11-01 ENLARGED PLANS
 - A11-02 ENLARGED PLANS
 - A31-01 DETAILS

NOT FOR BIDDING PURPOSES

ABBREVIATIONS	APPLICABLE CODES
<ul style="list-style-type: none"> ABV - ABOVE A C T - ACOUSTICAL CEILING TILE ADJ - ADJUSTABLE A F F - ABOVE FINISHED FLOOR ALUM - ALUMINUM BD - BOARD BLDG - BUILDING BLKG - BLOCKING BOT - BOTTOM BM - BEAM ¢ - CENTER LINE CLG - CEILING C J - CONTROL JOINT CPT - CONSTRUCTION POINT CPT - CARPET CLR - CLEAR COL - COLUMN CONC - CONCRETE CMU - CONCRETE MASONRY UNIT CTH - CERAMIC TILE CH - CEILING HEIGHT DET - DETAIL DI - DIAMETER DM - DIMENSION DN - DOWN DWG - DRAWING EA - EACH E / J T - EXPANSION JOINT EL - ELEVATION EXIST - EXISTING E W C - ELECTRIC WATER COOLER EXT - EXTERIOR EXP - EXPANSION JOINT FA - FIRE ALARM FD - FLOOR DRAIN FE - FIRE EXTINGUISHER FE C - FIRE EXTINGUISHER CABINET FN - FINISH / FINISHED FLR - FLOOR FTG - FOOTING GA - GAGE GALV - GALVANIZED GL - GLASS / GLAZING GYP - GYPSUM GWB - GYPSUM WALL BOARD H - HIGH / HEIGHT HC - HANDICAPPED H M - HOLLOW METAL HORIZ - HORIZONTAL HVAC - HEATING VENTILATION AND AIR CONDITIONING ID - INSIDE DIAMETER INSUL - INSULATION IT - JOINT LAM - LAMINATE LAV - LAVATORY MAS - MASONRY MAX - MAXIMUM MECH - MECHANICAL MER - MANUFACTURER MLDG - MOLDING MH - MAN HOLE M / O - MASONRY OPENING MS - METAL STUD MTL - METAL N / C - NOT IN CONTRACT NO - NUMBER N R C - NOISE REDUCTION COEFFICIENT N T S - NOT TO SCALE O / C - ON CENTER OD - OUTSIDE DIAMETER OPP - OPPOSITE P C - PRE CAST PERIM - PERIMETER PL - PLATE PLAM - PLASTIC LAMINATE PLYWD - PLYWOOD P M J - PRE-MOLDED JOINT FILLER PTD - PAINTED QTY - QUANTITY RAD - RADIUS RE - REFERENCE R D - ROOF DRAIN REINF - REINFORCING REQD - REQUIRED R & S - ROD & SHELF R W C - RAIN WATER CONDUCTOR R V - ROOF VENT SECT - SECTION S F - SQUARE FOOT S I - SQUARE INCH SP - SPACES (PARKING) SPEC - SPECIFICATION SQ - SQUARE STL - STEEL TELE - TELEPHONE TV - TELEVISION THK - THICK / THICKNESS TH - THRESHOLD T O M - TOP OF MASONRY T O S - TOP OF STEEL TYP - TYPICAL U N O - UNLESS NOTED OTHERWISE V C T - VINYL COMPOSITION TILE VERT - VERTICAL VEST - VESTIBULE V.I.F. - VERIFY IN FIELD W - WIDE / WIDTH W / - WITH W C - WATER CLOSET WD - WOOD W/O - WITHOUT WT - WEIGHT WWF - WELDED WIRE FABRIC 	<p>IBC 2012 (INTERNATIONAL BUILDING CODE) NFPA 101 LIFE SAFETY CODE, 2012 EDITION DELAWARE STATE FIRE PREVENTION REGULATIONS, NOVEMBER 11, 2012 STATE OF DELAWARE ARCHITECTURAL ACCESSIBILITY STANDARDS</p> <hr/> <p style="text-align: center;">SYMBOL LEGEND</p> <ul style="list-style-type: none"> SECTION TAG WINDOW TAG DOOR TAG ELEVATION TAG DETAIL TAG



ARCHITECTS
R G Architects, LLC
 200 W Main St Middletown, DE 19709
 302.376.8100 302.376.9851 fax
 www.rgarchitects.net

ISSUED FOR:
 ISSUED FOR BIDDING AUGUST 2, 2018

PROJECT INFO:
 LAKE FOREST SCHOOL DISTRICT

**LAKE FOREST
 HIGH SCHOOL
 PAVING IMPROVEMENTS**

5423 KILLENS POND ROAD
 FELTON, DE 19943

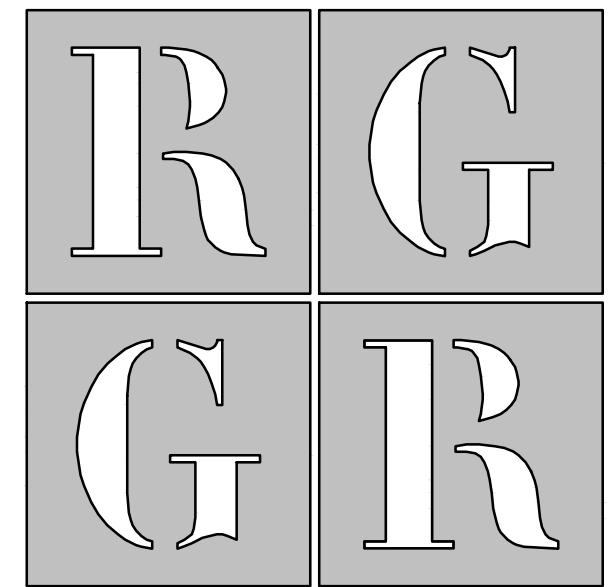
SHEET INFO:

PROJECT NO: 18024
 DRAWN BY: JAA
 CHECKED BY: RAG
 SCALE:
 DATE: 2 AUGUST 2018

TITLE & NO.:
Copyright - R G Architects - 2018

**SYMBOLS &
 ABBREVIATIONS**

T10-02



R G Architects, LLC
 200 W Main St Middletown, DE 19709
 302.376.8100 302.376.9851 fax
 www.rgarchitects.net

- GENERAL NOTES**
- RESTORE ALL DISTURBED PAVEMENT OUTSIDE THE NEW WORK AREA AND ALL GRASS AREA TO THEIR PRE-CONSTRUCTION CONDITION. TOPSOIL, SEED, AND MULCH ALL DISTURBED AREAS IMMEDIATELY FOLLOWING CONSTRUCTION.
 - THE CONTRACTOR SHALL MAKE EVERY EFFORT TO PROTECT ALL EXISTING TREES AND SITE FEATURES. SHOULD ANY TREES, FENCES, OR OTHER SITE FEATURES BE DAMAGED OR DESTROYED DUE TO THE CONTRACTOR'S NEGLIGENCE, THE CONTRACTOR SHALL BEAR THE COST AND RESPONSIBILITY FOR REPAIR AND/OR REPLACEMENT OF THE DAMAGED ITEMS.
 - THE CONTRACTOR SHALL BE RESPONSIBLE FOR VERIFYING BOTH HORIZONTAL AND VERTICAL LOCATIONS OF UTILITIES PRIOR TO COMMENCEMENT OF WORK. MISS UTILITY SHALL BE NOTIFIED (3) THREE WORKING DAYS PRIOR TO EXCAVATION AT 1-800-282-8555.
 - ON-SITE VERIFICATION OF ALL DIMENSIONS AND CONDITIONS SHALL BE THE RESPONSIBILITY OF THE CONTRACTORS.
 - NOTED DIMENSIONS TAKE PRECEDENT OVER SCALE.
 - THE PROJECT ARCHITECT SHALL BE NOTIFIED SHOULD ANY DISCREPANCY OR QUESTIONS ARISE PERTAINING TO THESE DRAWINGS. NO CHANGE SHALL BE MAKE WITHOUT REVIEW BY THE ARCHITECT.
 - ALL CONTRACTORS SHALL VISIT THE SITE AND BECOME FAMILIAR WITH EXISTING CONDITIONS BEFORE SUBMITTING BIDS.
 - ALL WORK SHALL BE PERFORMED IN A GOOD WORKMANLIKE MANNER CONTRACTORS TO REMOVE THEIR DEBRIS AND LEAVE THE JOB SITE BROOM SWEEP AT THE END OF EACH WORKING DAY.
 - ALL WORK AND MATERIALS SHALL BE GUARANTEED FOR A PERIOD OF TWO (2) YEARS AFTER DATE OF OWNER'S ACCEPTANCE AND FINAL COMPLETION.
 - NOTES ON DRAWINGS SHALL APPLY TO ALL SIMILAR CONDITIONS WHETHER THEY ARE REPEATED OR NOT.
 - WORK WILL BE CONSTRUCTED IN MULTIPLE PHASES SO AS NOT IMPEDE THE FUNCTION OF THE INSTITUTION
 - CONTRACTOR SHALL BE RESPONSIBLE FOR DISPOSAL OF PAVEMENT MILLINGS OFF SITE
 - ALL POTHOLES OPENED DURING CONSTRUCTION MUST BE TEMPORARY OR PERMANENTLY REPAIRED IN DAILY BASIS. ALL ROADS SHALL BE IN DRIVABLE CONDITIONS BY DUSK EVERY DAY.

- LEGEND**
- AREA OF EXISTING PAVEMENT RE-SURFACING. PREPARE EDGES TO KEY-IN TO ADJACENT ASPHALT PAVEMENT TO REMAIN. CONTRACTOR SHALL REVIEW AND REPAIR, IF NEEDED, SUB-GRADE CONDITIONS UP TO DELDOT STANDARDS.
 - AREA OF SUPERFICIAL FATIGUE, REFLECTIVE OR SHRINKAGE CRACKS TO BE MILLED DOWN 2 INCHES (TYP) AND AS DEEP AS REQUIRED TO REPAIR SUB-GRADE. AFTER MILLING, CONTRACTOR SHALL REPAIR SUB-GRADE CONDITIONS UP TO DELDOT STANDARDS ON AREAS OF NOTICEABLE DAMAGE.

- KEY NOTES**
- AREA TO RECEIVE NEW FULL-DEPTH ASPHALT PAVING AT ALL POTHOLES TO BE REPAIRED, AND AT PERIMETER OF EXIST DRAINAGE OR MANHOLES TO REMAIN.
 - EXISTING PAVEMENT TO BE OVERLAPPED WITH NEW ASPHALT LAYER.
 - EDGE CRACKS TO BE REPAIRED. PROVIDE NEW SHOULDER SUPPORT. CONTRACTOR MUST PAY SPECIAL ATTENTION IN THESE AREAS TO CORRECT DRAINAGE AND SLOPE OF THE ROAD DURING PAVEMENT MILLING IN ORDER TO PREVENT WATER EROSION AND FROST DAMAGE.

- DEMOLITION NOTES:**
- REFER TO THIS SHEET FOR GENERAL LOCATION OF NEW WORK. CONTRACTOR MUST IDENTIFY AND VERIFY IN FIELD THE EXTENT OF ALL WORK BEYOND WHAT IS SHOWN ON THE DEMOLITION PLAN.
 - PARKING WILL BE PROHIBITED DURING PAVEMENT MILLING WORK, BUT VEHICLES WILL STILL HAVE ACCESS IN AND OUT OF DRIVEWAYS.
 - DURING PAVEMENT MILLING WORK (TWO INCHES TYPICAL) THE ROAD CROSS SLOPE MUST BE VERIFIED TO BE CORRECT.
 - FULL-DEPTH PAVEMENT REPAIRS ARE NOT LIMITED TO THOSE SHOWN ON THIS SHEET. CONTRACTOR IS RESPONSIBLE TO LOCATE AND FIX ANY SUB-GRADE CONDITION THAT WILL LIMIT THE NEW ASPHALT COAT LIFE LENGTH.
 - REPAIRS MUST BE DONE IN RECTANGULAR OR SQUARE SEGMENTS AND WILL GO DOWN TO EIGHT INCHES UNDER THE OLD PAVEMENT.
 - SUB-GRADE PAVEMENT REPAIR AS FOLLOWS:
 - AFTER THE INITIAL MILLING DOWN OF THE PAVEMENT, CREWS SHALL MILL DEEPER INTO THE ALREADY MILLED PAVEMENT TO MAKE REPAIRS TO THE SUB-GRADE. SEE DETAIL 4 ON SHEET A31-01
 - A NEW LAYER OF ASPHALT WILL BE APPLIED TO ONLY THE SEGMENT WHERE PAVEMENT REPAIR WAS DONE. THIS IS PART OF THE REPAIR PROCESS AND IT IS NOT CONSIDERED RESURFACING THIS SEGMENT.
 - THIS NEW LAYER OF ASPHALT (WHERE THE PAVEMENT REPAIR WAS DONE) MUST BE MILLED DOWN TO LOWER THE REPAIRED SECTION SO IT IS LEVEL WITH THE REST OF THE MILLED SURFACE AROUND IT
 - THE ROAD IS THEN RESURFACED WITH A NEW LAYER OF ASPHALT THAT SEALS OVER THE TOP OF THE REPAIRED SECTION OF PAVEMENT, SO THERE ARE NO SEAMS OR JOINTS AT THE EDGES OF WHERE THE PAVEMENT REPAIR WAS DONE.
 - BETWEEN ONE TO SEVEN DAYS (MAX) AFTER MILLING, NEW LAYER OF PAVEMENT LAID DOWN (WILL FOLLOW ANY DEEPER PAVEMENT REPAIR THAT IS NEEDED PRIOR TO RESURFACING)

ISSUED FOR:
 ISSUED FOR BIDDING AUGUST 2, 2018

PROJECT INFO:
 LAKE FOREST SCHOOL DISTRICT

LAKE FOREST HIGH SCHOOL PAVING IMPROVEMENTS

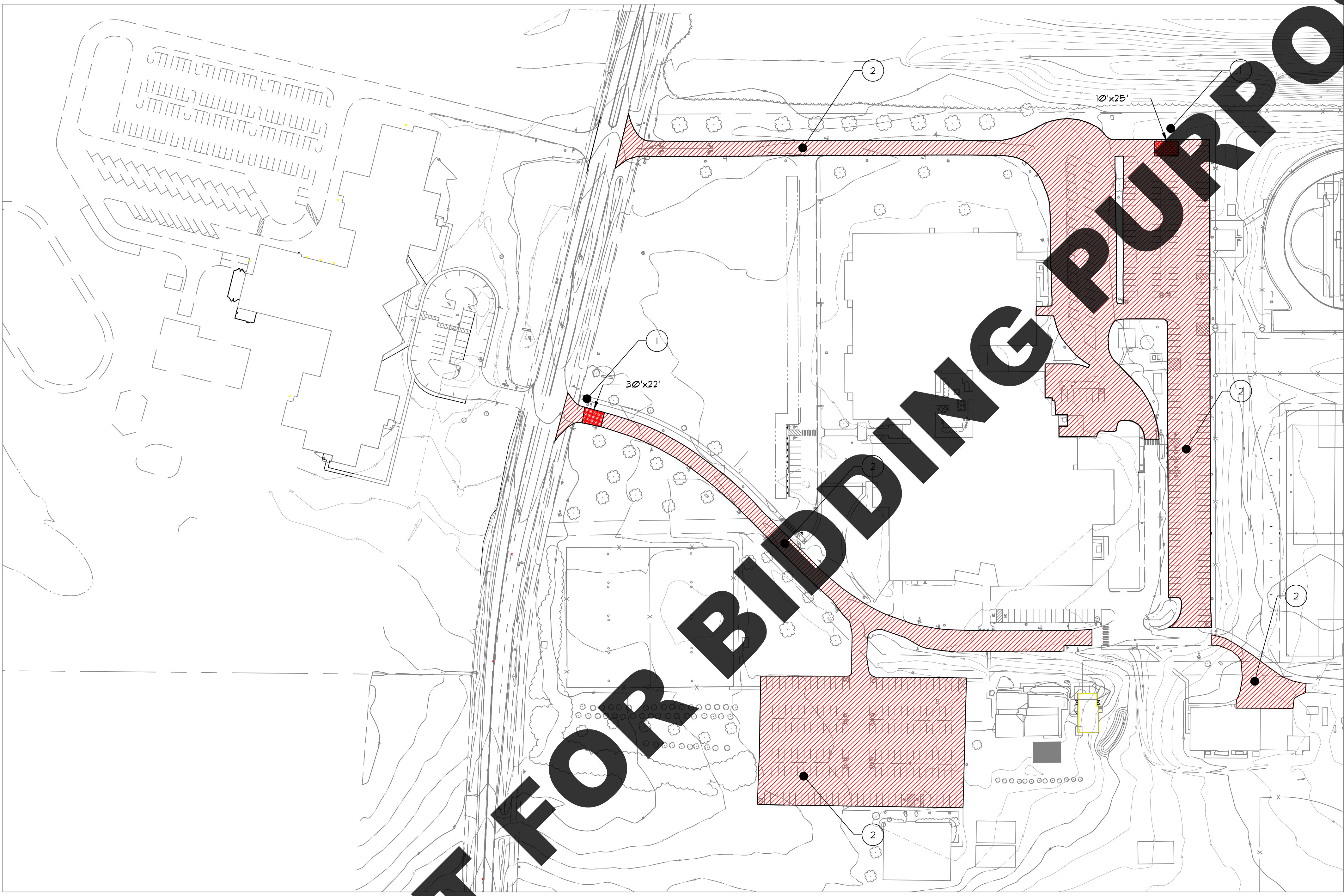
5423 KILLENS POND ROAD
 FELTON, DE 19943

SHEET INFO:
 PROJECT NO: 18024
 DRAWN BY: JAA
 CHECKED BY: RAG
 SCALE: AS SHOWN
 DATE: 2 AUGUST 2018

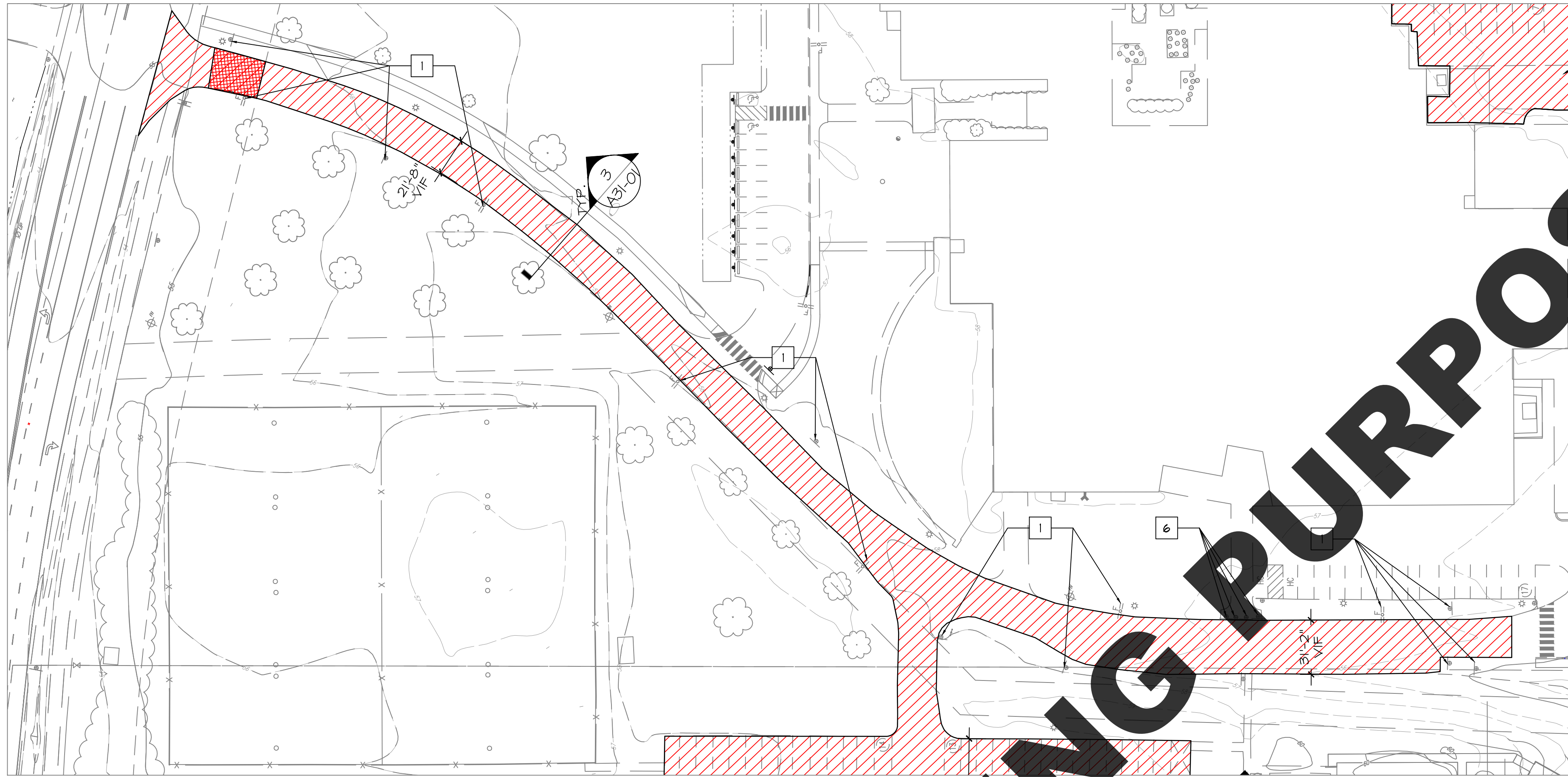
TITLE & NO.:
 Copyright - R G Architects - 2018

SITE PLAN

D10-01



1 SITE PLAN
 SCALE: 1/8" = 1'-0"
 NORTH

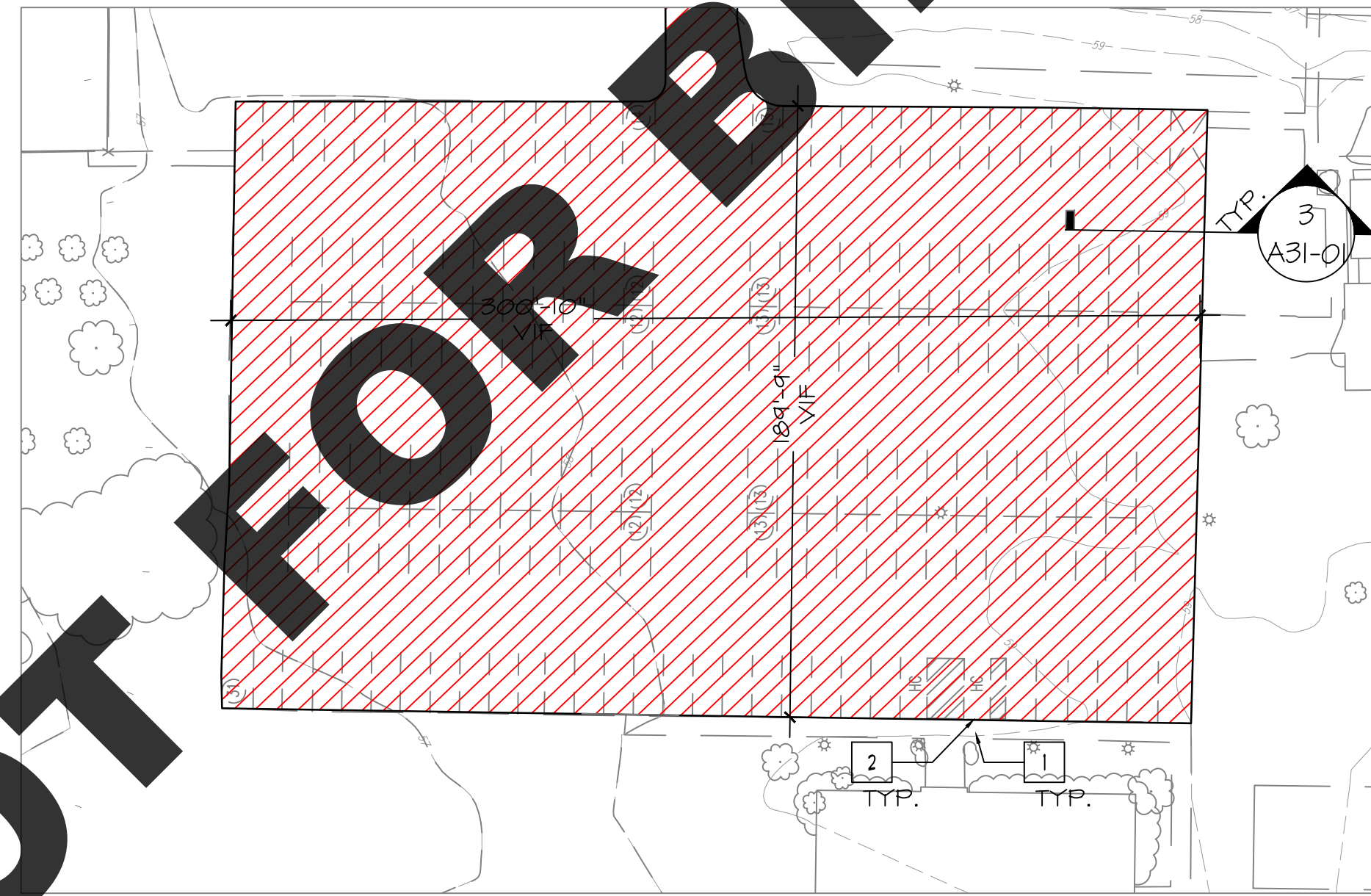


LEGEND	
	4" SOLID "WHITE" LINES, TYPICAL U.N.O.
	4" SOLID "YELLOW" LINES.
	4" SOLID "HANDICAP BLUE" LINES.
	NEW RESURFACING WITH 1/2" SUPERPAVE TYPE C, PG 64-22, 160 STRATIONS (CARBONATE STONE) (401645)
	NEW FULL-DEPTH ASPHALT ROAD PER DETAIL 5 ON SHEET A31-01

KEY NOTES	
1	EXIST SIGNS POST TO REMAIN, NO WORK INVOLVED
2	CAREFULLY REMOVE AND RE-INSTALL EXIST PRECAST CONC. WHEEL STOP BUMPERS AT SAME LOCATION, SEE DETAIL 2 ON SHEET A31-01
3	NEW PRECAST CONC. WHEEL STOP BUMPER, SEE DETAIL 2 ON SHEET A31-01
4	EXIST. PARKING DRAINAGE 24"x36". SEE DETAIL 1 ON A31-01
5	EXIST. PARKING MANHOLE COVER. SEE DETAIL 6 ON SHEET A31-01
6	EXIST BOLLARDS TO BE SCRAPPED, SANDED, PRIMED AND PAINT WITH (2) COATS OF PAINT TO MATCH CURRENT COLOR.

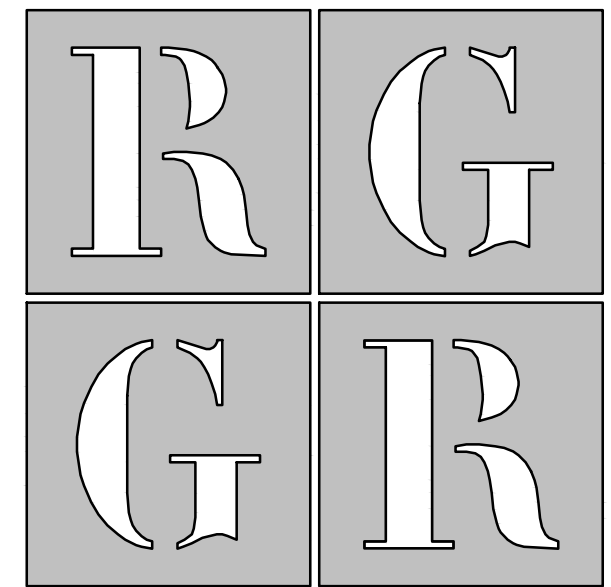
STRIPING NOTES:	
1.	STRIPES WITH TRAFFIC ZONE MARKING PAINT, LATEX ACRYLIC BASE. (TT-P-1452E TYPE II - FEDERAL STANDARD). WAIT TO APPLY STRIPING PAINT
2.	ALL LINES WILL BE 4 INCHES WIDE. THEY SHOULD BE STRAIGHT AND UNIFORM AND APPLIED WITH A STRIPING MACHINE
3.	LAYOUT MARKINGS USING GUIDE LINES, TEMPLATES AND FORMS STENCILS AND TEMPLATES SHALL BE PROFESSIONALLY MADE TO INDUSTRY STANDARDS. "FREE HAND" PAINTING IS NOT ALLOWED.
4.	PROTECT ADJACENT CURBS, WALKS, FENCES, AND OTHER ITEMS FROM RECEIVING PAINT.
5.	VERIFY THAT THE NEW PAVEMENT COATINGS WILL BE GIVEN A MINIMUM OF 24 HOURS TO CURE WITH NO TRAFFIC.

2 SITE PLAN
SCALE: N.T.S.



1 SITE PLAN
SCALE: N.T.S.

NOT FOR BIDDING PURPOSES



R G ARCHITECTS, LLC
200 W Main St Middletown, DE 19709
302.376.8100 302.376.9851 fax
www.rgarchitects.net

ISSUED FOR:
ISSUED FOR BIDDING AUGUST 2, 2018

PROJECT INFO:
LAKE FOREST SCHOOL DISTRICT

LAKE FOREST HIGH SCHOOL PAVING IMPROVEMENTS

5423 KILLENS POND ROAD
FELTON, DE 19943

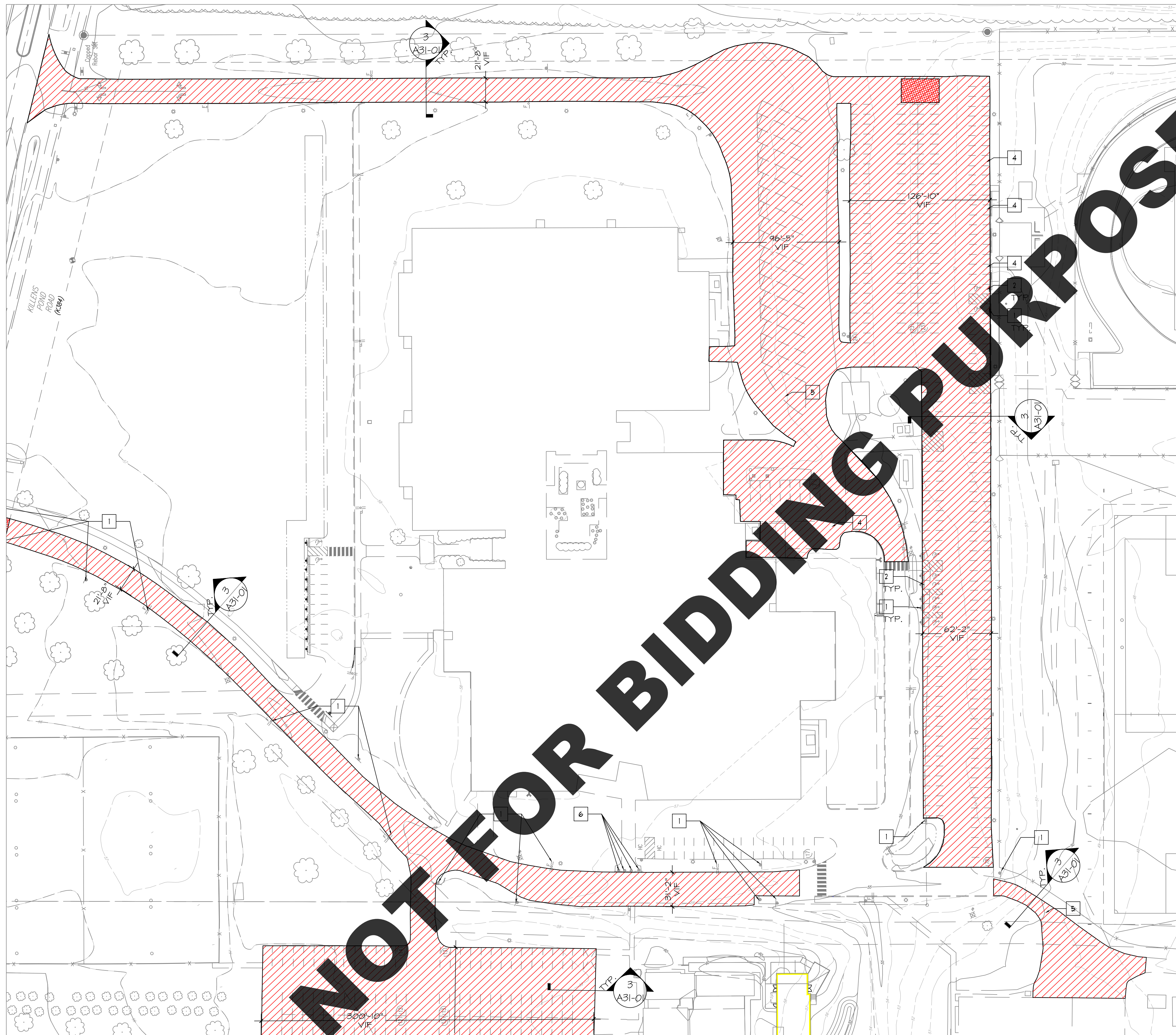
SHEET INFO:
PROJECT NO: 18024
DRAWN BY: JAA
CHECKED BY: RAG
SCALE: AS SHOWN
DATE: 2 AUGUST 2018

TITLE & NO.:

ENLARGED PLANS

A11-01

Copyright - R G Architects - 2018



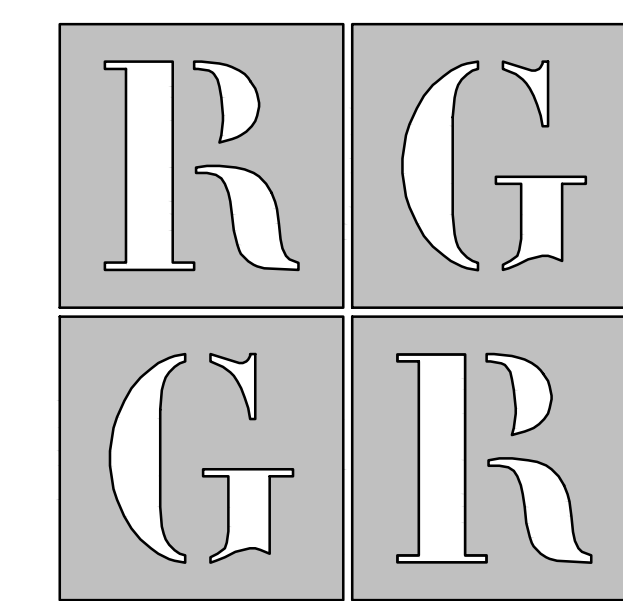
LEGEND

	4" SOLID "WHITE" LINES, TYPICAL U.N.O.
	4" SOLID "YELLOW" LINES.
	4" SOLID "HANDICAP BLUE" LINES.
	NEW RESURFACING WITH 1/2" SUPERPAVE TYPE C, PG 64-22, 160 STRATONS (CARBONATE STONE) (401645)
	NEW FULL-DEPTH ASPHALT ROAD PER DETAIL 5 ON SHEET A31-01

- KEY NOTES**
- 1 EXIST SIGNS POST TO REMAIN, NO WORK INVOLVED
 - 2 CAREFULLY REMOVE AND RE-INSTALL EXIST PRECAST CONC. WHEEL STOP BUMPERS AT SAME LOCATION. SEE DETAIL 2 ON SHEET A31-01
 - 3 NEW PRECAST CONC. WHEEL STOP BUMPER. SEE DETAIL 2 ON SHEET A31-01
 - 4 EXIST. PARKING DRAINAGE 24"x36". SEE DETAIL 1 ON A31-01
 - 5 EXIST. PARKING MANHOLE COVER. SEE DETAIL 6 ON SHEET A31-01
 - 6 EXIST BOLLARDS TO BE SCRAPPED, SANDED, PRIMED AND PAINT WITH (2) COATS OF PAINT TO MATCH CURRENT COLOR.
- GENERAL NOTES**
1. ALL DIMENSIONS SHOWN FOR NEW & EXISTING PAVEMENT ARE APPROX. FOR BIDDING PURPOSES. ON-SITE VERIFICATION OF ALL DIMENSIONS AND CONDITIONS SHALL BE THE RESPONSIBILITY OF THE CONTRACTORS.

- STRIPING NOTES:**
1. STRIPE WITH TRAFFIC ZONE MARKING PAINT, LATEX ACRYLIC BASE. (TT-P-1452E TYPE II - FEDERAL STANDARD). WAIT TO APPLY STRIPING PAINT
 2. ALL LINES WILL BE 4 INCHES WIDE. THEY SHOULD BE STRAIGHT AND UNIFORM AND APPLIED WITH A STRIPING MACHINE
 3. LAYOUT MARKINGS USING GUIDE LINES, TEMPLATES AND FORMS STENCILS AND TEMPLATES SHALL BE PROFESSIONALLY MADE TO INDUSTRY STANDARDS. "FREE HAND" PAINTING IS NOT ALLOWED.
 4. PROTECT ADJACENT CURBS, WALKS, FENCES, AND OTHER ITEMS FROM RECEIVING PAINT.
 5. VERIFY THAT THE NEW PAVEMENT COATINGS WILL BE GIVEN A MINIMUM OF 24 HOURS TO CURE WITH NO TRAFFIC.

1 SITE PLAN
SCALE: N.T.S.



ARCHITECTS
R G Architects, LLC
 200 W Main St Middletown, DE 19709
 302.376.8100 302.376.9851 fax
 www.rgarchitects.net

ISSUED FOR:
 ISSUED FOR BIDDING AUGUST 2, 2018

PROJECT INFO:
 LAKE FOREST SCHOOL DISTRICT

**LAKE FOREST
 HIGH SCHOOL
 PAVING IMPROVEMENTS**

5423 KILLENS POND ROAD
 FELTON, DE 19943

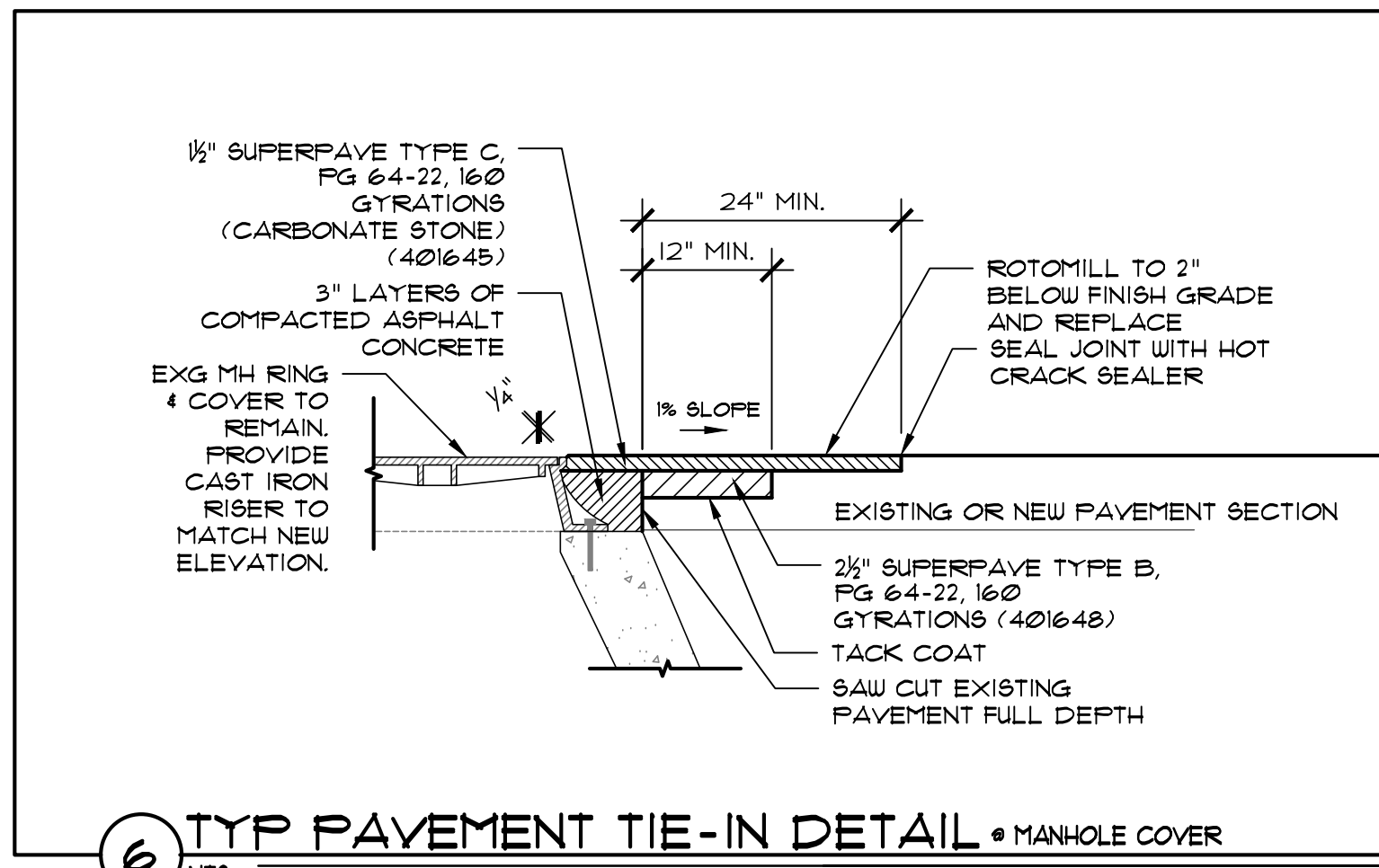
SHEET INFO:
 PROJECT NO: 18024
 DRAWN BY: JAA
 CHECKED BY: RAG
 SCALE: AS SHOWN
 DATE: 2 AUGUST 2018

TITLE & NO.:
 Copyright - R G Architects - 2018

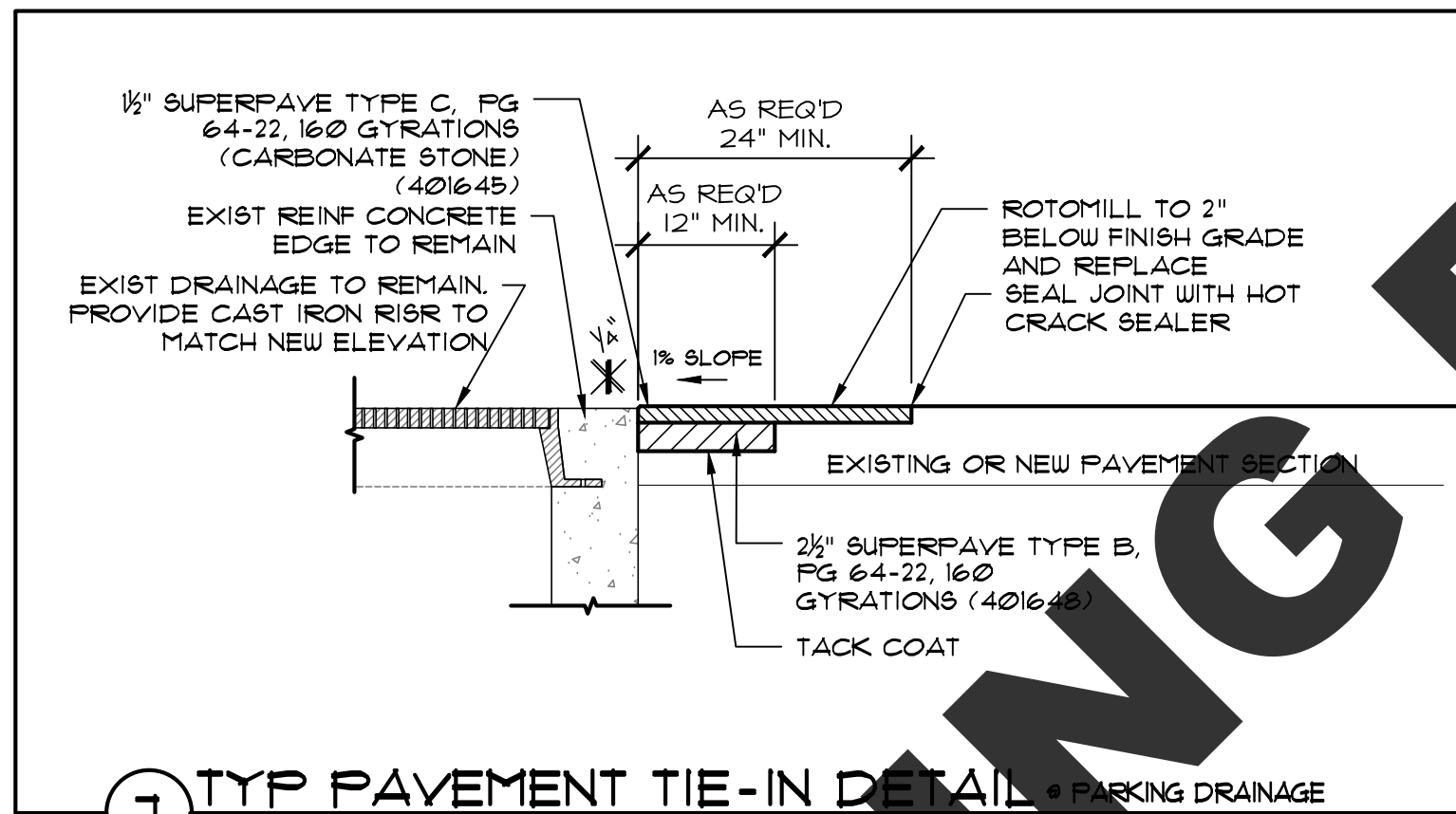
ENLARGED PLANS

A11-02

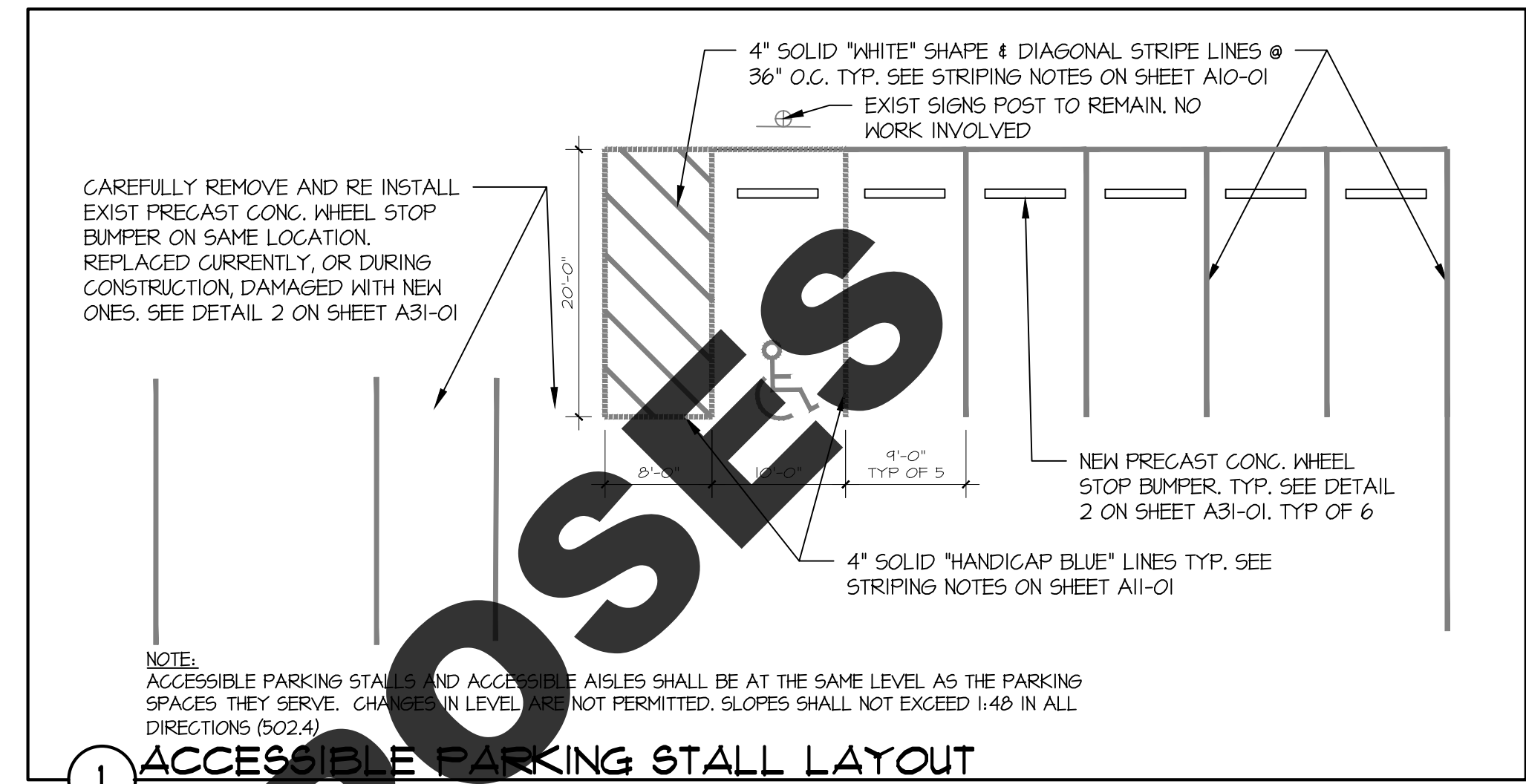
NOT FOR BIDDING PURPOSES



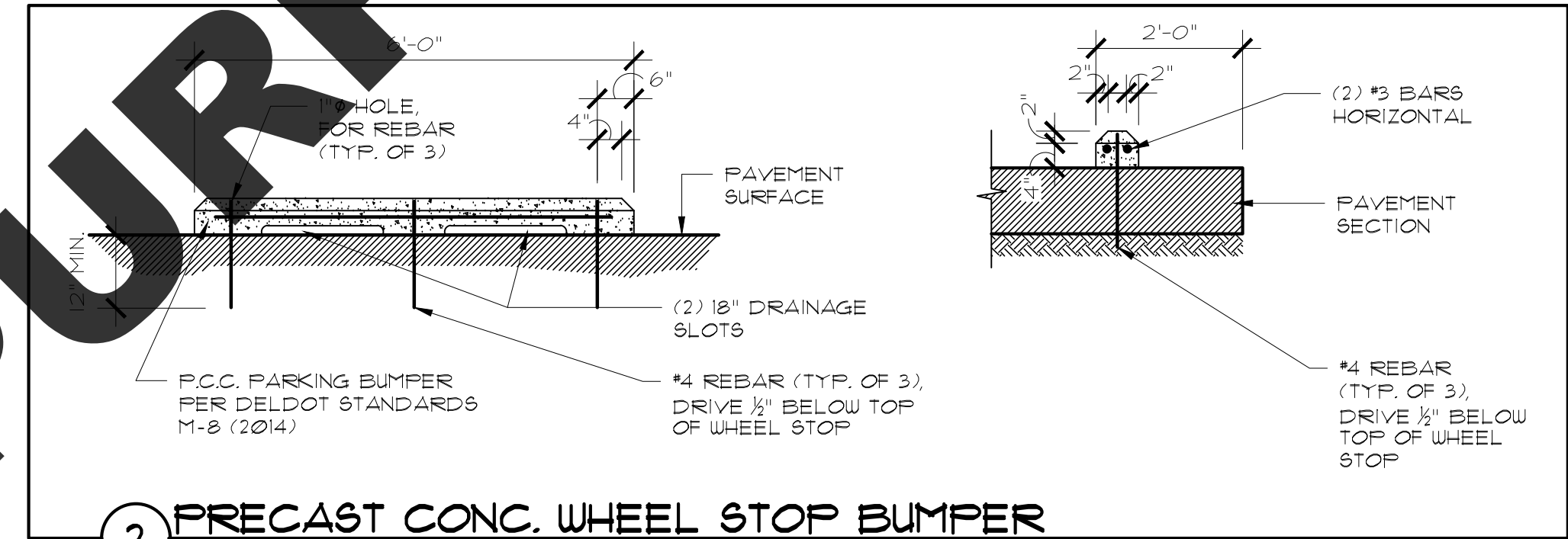
6 TYP PAVEMENT TIE-IN DETAIL - MANHOLE COVER
NTS.



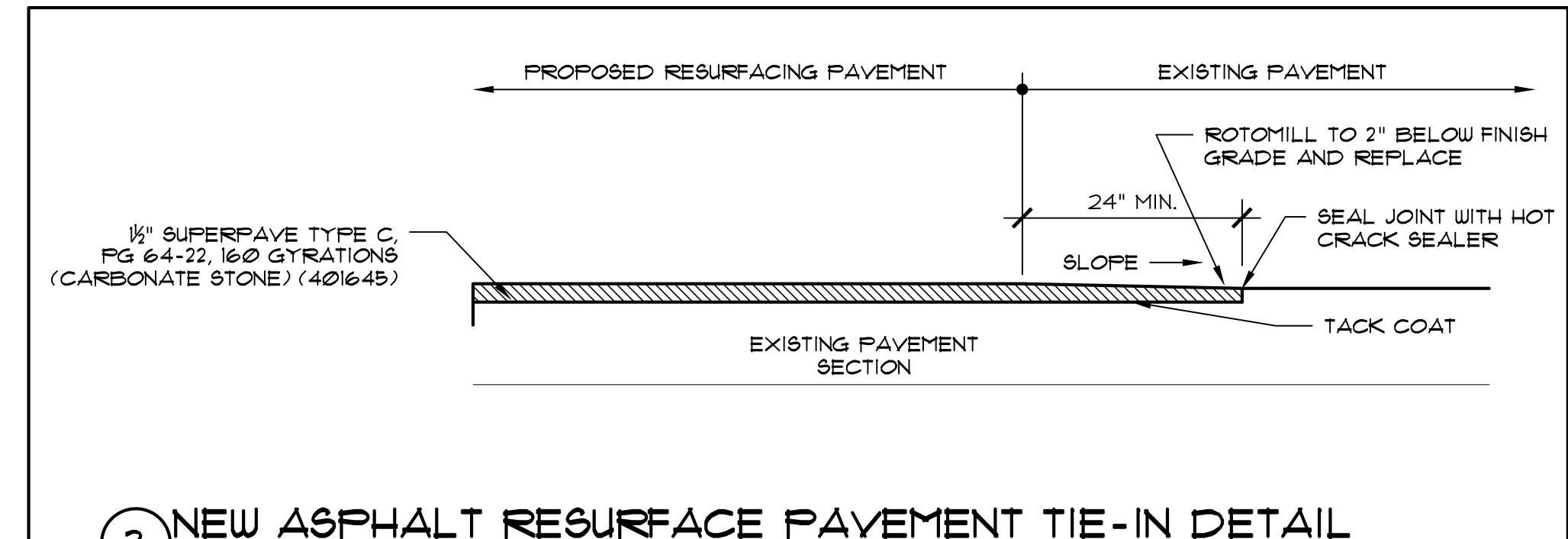
7 TYP PAVEMENT TIE-IN DETAIL - PARKING DRAINAGE
NTS.



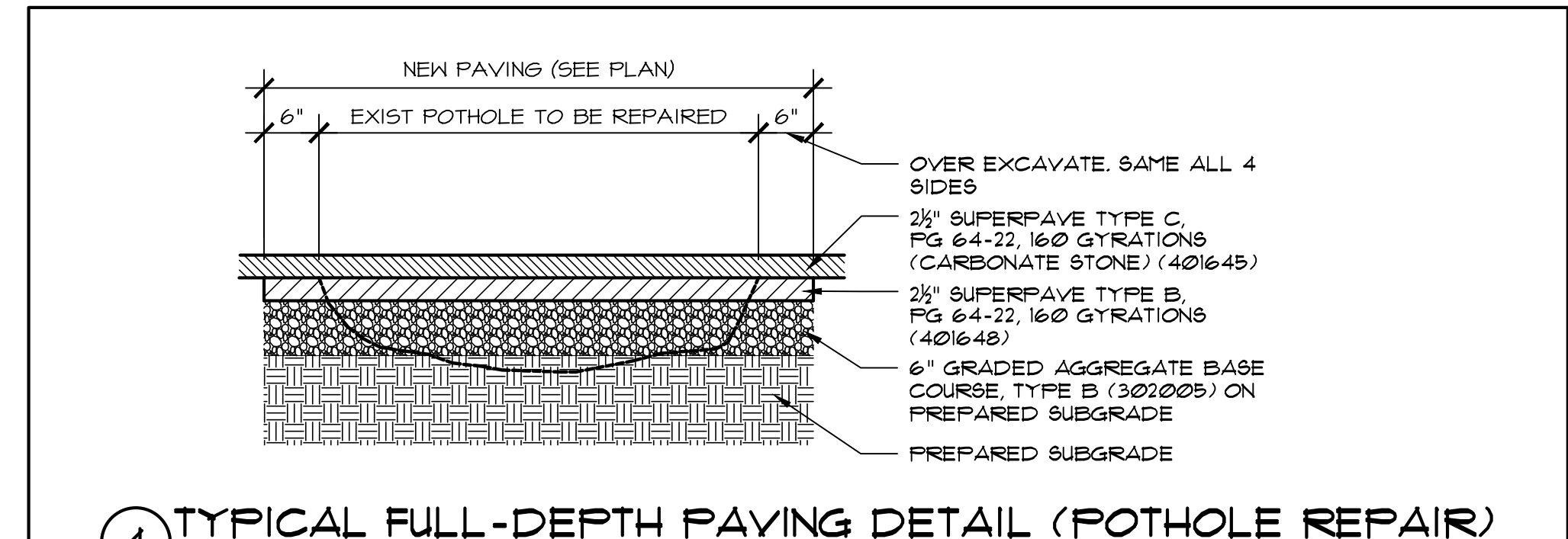
1 ACCESSIBLE PARKING STALL LAYOUT
NTS.



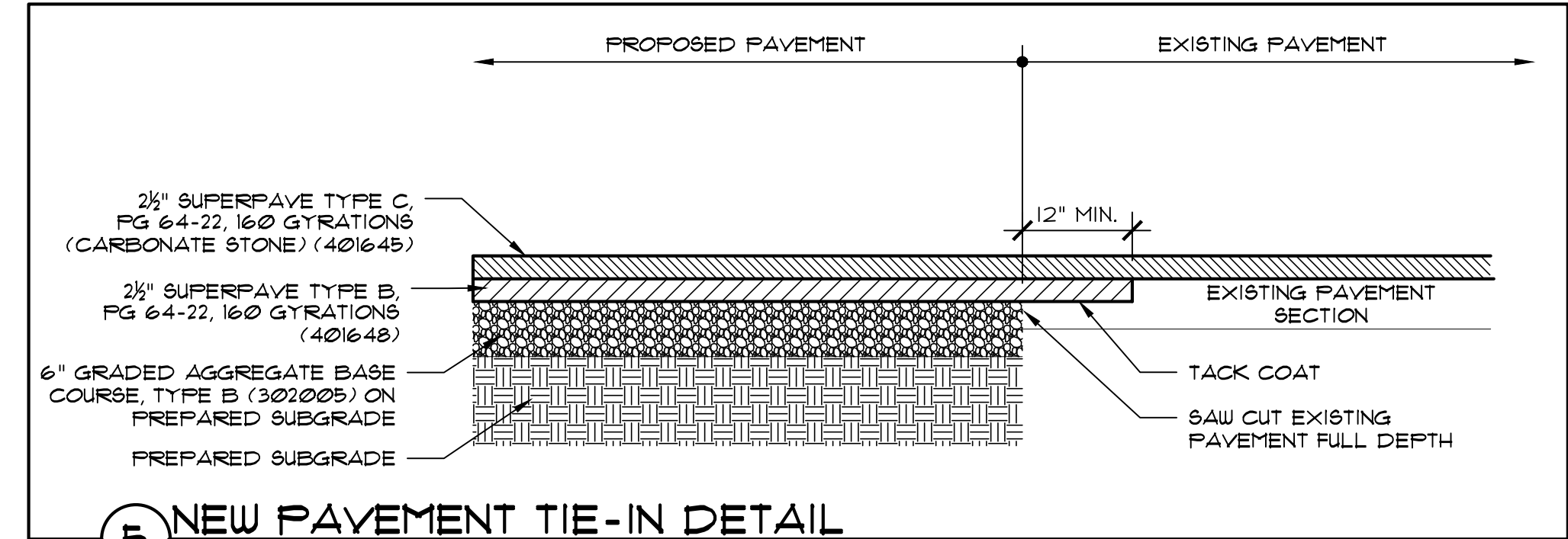
2 PRECAST CONC. WHEEL STOP BUMPER
NTS.



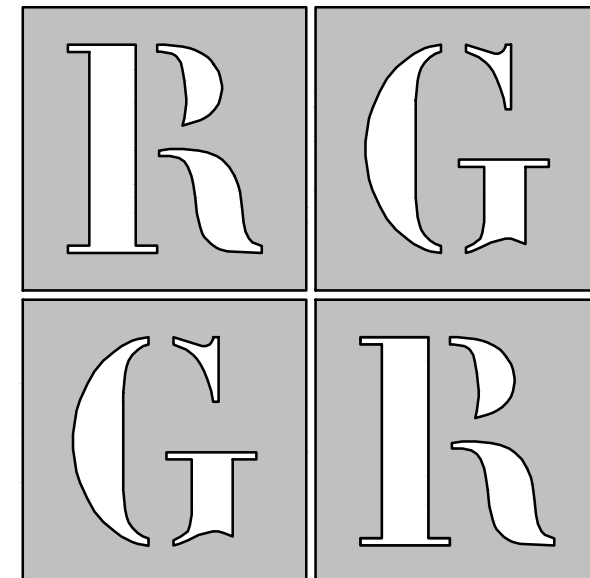
3 NEW ASPHALT RESURFACE PAVEMENT TIE-IN DETAIL
NTS.



4 TYPICAL FULL-DEPTH PAVING DETAIL (POTHOLE REPAIR)
NTS.



5 NEW PAVEMENT TIE-IN DETAIL
NTS.



ARCHITECTS
R G Architects, LLC
 200 W Main St. Middletown, DE 19709
 302.376.8100 302.376.9851 fax
 www.rgarchitects.net

ISSUED FOR:
 ISSUED FOR BIDDING AUGUST 2, 2018

PROJECT INFO:
 LAKE FOREST SCHOOL DISTRICT

LAKE FOREST HIGH SCHOOL PAVING IMPROVEMENTS

5423 KILLENS POND ROAD
 FELTON, DE 19943

SHEET INFO:
 PROJECT NO: 18024
 DRAWN BY: JAA
 CHECKED BY: RAG
 SCALE: AS SHOWN
 DATE: 2 AUGUST 2018

TITLE & NO.:
 Copyright - R G Architects - 2018

DETAILS

A31-01