

ADDENDUM NO. 3
PHILLIP C. SHOWELL ELEMENTARY SCHOOL
CLASSROOM ADDITION
Selbyville, Delaware 19975

May 6, 2015

NOTICE: Attach this addendum to the project manual for this project. It modifies and becomes a part of the contract documents. Work or materials not specifically mentioned herein are to be described in the main body of the specifications and as shown on the drawings. Bidders shall acknowledge receipt of this addendum on the space provided on the Bid Form. Failure to do so may subject the bidder to disqualification.

The time and location for the bid opening remains Friday May 8, 2015 at 2:00 PM local time at the Indian River School District Offices, 31 Hoosier Street Selbyville, Delaware 19975.

Bidders are advised that the only reliable source of documents for this solicitation is the EDiS ftp site. Bidders that rely on information published on any other websites do so at their own risk.

Whenever this Addendum modifies a portion of the Project Manual added information is shown in **Bold/Italicized** and deleted information is shown as ~~striketrough~~.

The documents for the above referenced project, Project Manual, dated March 2, 2015 and Drawings, dated March 25, 2015, as well as subsequently issued addenda, are amended as follows:

CLARIFICATION

1. Vented fascia basis-of-design is GAF Cobra Fasciaflow. Please note that ~9"H aluminum wrapped fascia will require cut-outs, or blocking to permit ventilation, and 2x blocking shall be held to bottom of hat furring. Alternately, prefinished vented drip edge is acceptable as long as it is coordinated with gutter.

CHANGES TO THE PROJECT MANUAL

1. Section 007300 – SUPPLEMENTARY GENERAL CONDITIONS
 - a. CHANGE the length of the Contractor's warranty in paragraphs 3.5.1 and 3.5.3 from one year to two years.
2. Section 011100 – SUMMARY OF WORK
 - a. DELETE paragraph 6.8 on page 011100-4 and REPLACE it with "All bids must include insurance limits in accordance with Section 006216 CERTIFICATE OF INSURANCE."
 - b. CONTRACT A-01, SITEWORK

- i. ADD the following NEW item after the final item on page 011100-9:
 - “Provide joint sealant where paving abuts buildings, as described in Section 079200 Joint Sealants, paragraph 2.2.B., added in Addendum 1.”

3. Section 013216 – CONSTRUCTION SCHEDULE

- a. REPLACE Pre-Bid Construction Schedule, issued in Addendum 1, with NEW Pre-Bid Construction Schedule, dated May 6, 2015, at the end of this section.

4. Section 087100 Door Hardware

- a. ADD hardware sets 7.0 and 8.0 as follows:

Set: 7.0

Doors: 111/2

| | | | |
|--------------------------------|----------------|-------|----|
| 3 Hinge | TA2714 | US26D | MK |
| 1 Cylindrical Lock (storeroom) | CL3357 PZD CTP | 626 | RU |
| 1 Cylinder Core (Pyramid) | 8027 | | RU |
| 1 Door Closer | R7500 | 689 | NO |
| 1 Kick Plate | K1050 8" 4BE | US32D | RO |
| 1 Door Stop | 403 (or) 441CU | US26D | RO |
| 1 Gasketing (head/jamb) | S88BL | | PE |

Set: 8.0

Doors: 111/1, 112/1

| | | | |
|--------------------------------|----------------|-------|----|
| 3 Hinge | TA2714 | US26D | MK |
| 1 Cylindrical Lock (storeroom) | CL3357 PZD CTP | 626 | RU |
| 1 Cylinder Core (Pyramid) | 8027 | | RU |

| | | | |
|-------------------------|----------------|-------|----|
| 1 Door Closer | PR7500 | 689 | NO |
| 1 Kick Plate | K1050 8" 4BE | US32D | RO |
| 1 Door Stop | 403 (or) 441CU | US26D | RO |
| 1 Gasketing (head/jamb) | S88BL | | PE |

CHANGES TO THE DRAWINGS

1. AD101 First Floor Demolition Plan
 - a. ADD removal of walls and doors and new openings for doors at storage rooms and closets at Art 109 and Music 110, as part of work in Alternate 4.
2. A101 First Floor Plan and Interior Elevations
 - a. ADD new walls and doors infill of old openings at Storage 111, Storage 112, and IDF 113, as part of work in Alternate 4.
3. A102 First Floor Reflected Ceiling Plan
 - a. ADD new ceilings at Storage 111, Storage 112, and IDF 113, as part of work in Alternate 4.
4. A103 Finish Plan and Finish Schedule
 - a. Detail 1:
 - i. REMOVE hatching for N.I.C. area at Storage 111, Storage 112, and IDF 113, as part of work in Alternate 4.
 - ii. ADD note at Storage 111, Storage 112, and IDF 113 as follows: "ALTERNATE 4: PATCH/INFILL VCT AT NEW AND INFILLED DOOR OPENINGS, TYP."
 - b. Finish Schedule Legend
 - i. ADD rooms Storage 111, Storage 112, and IDF 113.
5. A601 Door Schedule, Door and Window Types, and Details
 - a. Detail J2, J3, and H2: ADD note from spray polyurethane insulating air barrier to storefront / hollow metal opening: "TRANSITION MEMBRANE."
 - b. Detail H2: REVISE note to read as follows; "SEALANT AND BACKER ROD BOTH SIDES".
 - c. Door Schedule:
 - i. ADD doors 111/1, 111/2, and 112/1.
 - ii. REVISE Sill Detail from "S1" to "-" at the following doors: 115/2, 122/1, 122B/1, 123/1, 123B/1, 124/1, 124B/1, 125/1, AND 125B/1.

ATTACHMENTS

Pre-Bid Construction Schedule, dated May 6, 2015
 AD101, A101, A102, A103, A601 dated May 5, 2015

END OF ADDENDUM NO. 3



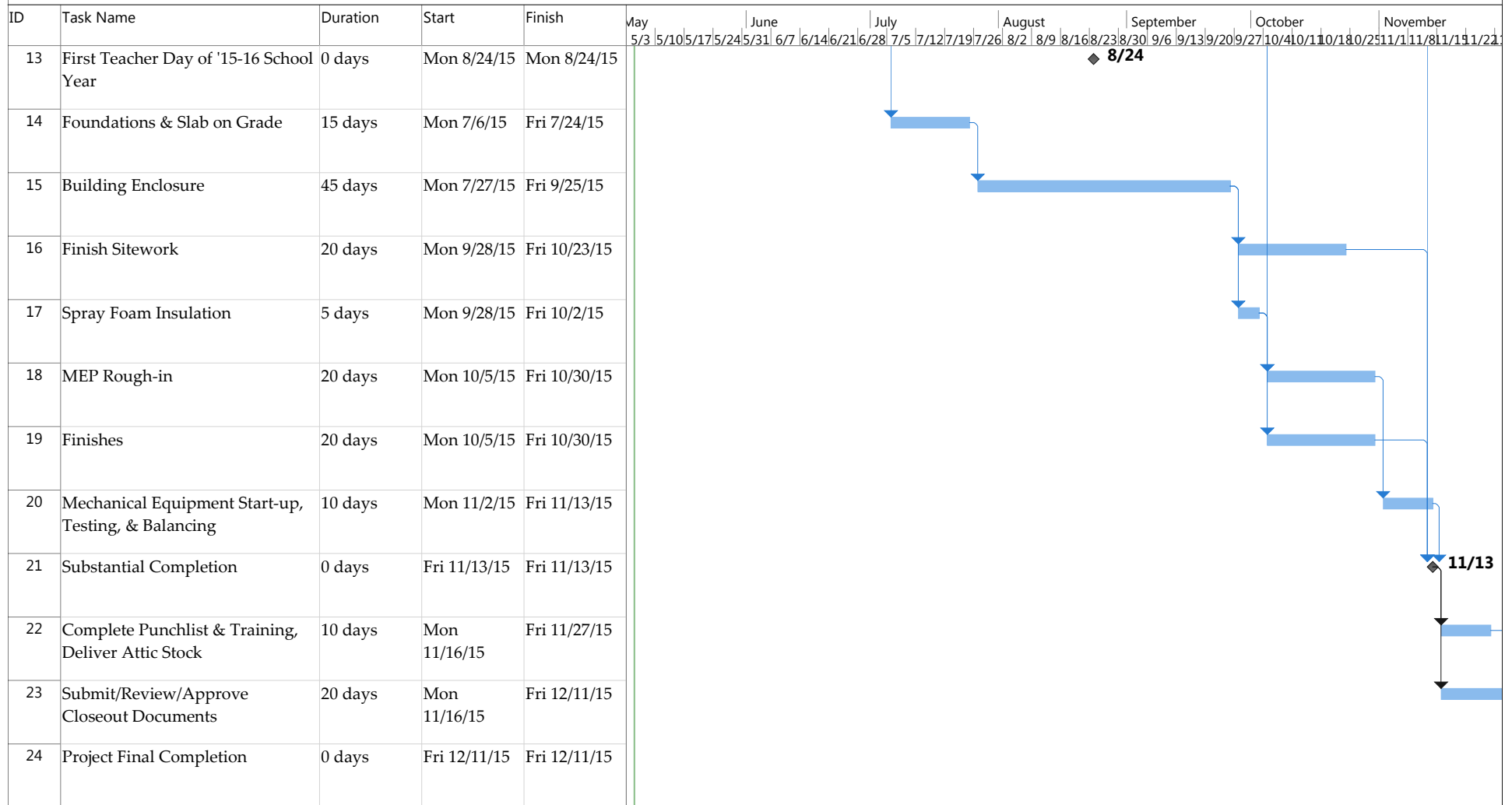
Phillip C. Showell Elementary School Classroom Addition
Pre-Bid Construction Schedule
May 6, 2015



| | | | | | | | |
|-----------------|--|--------------------|--|-----------------------|--|--------------------|--|
| Task | | Inactive Task | | Manual Summary Rollup | | External Milestone | |
| Split | | Inactive Milestone | | Manual Summary | | Deadline | |
| Milestone | | Inactive Summary | | Start-only | | Progress | |
| Summary | | Manual Task | | Finish-only | | Manual Progress | |
| Project Summary | | Duration-only | | External Tasks | | | |



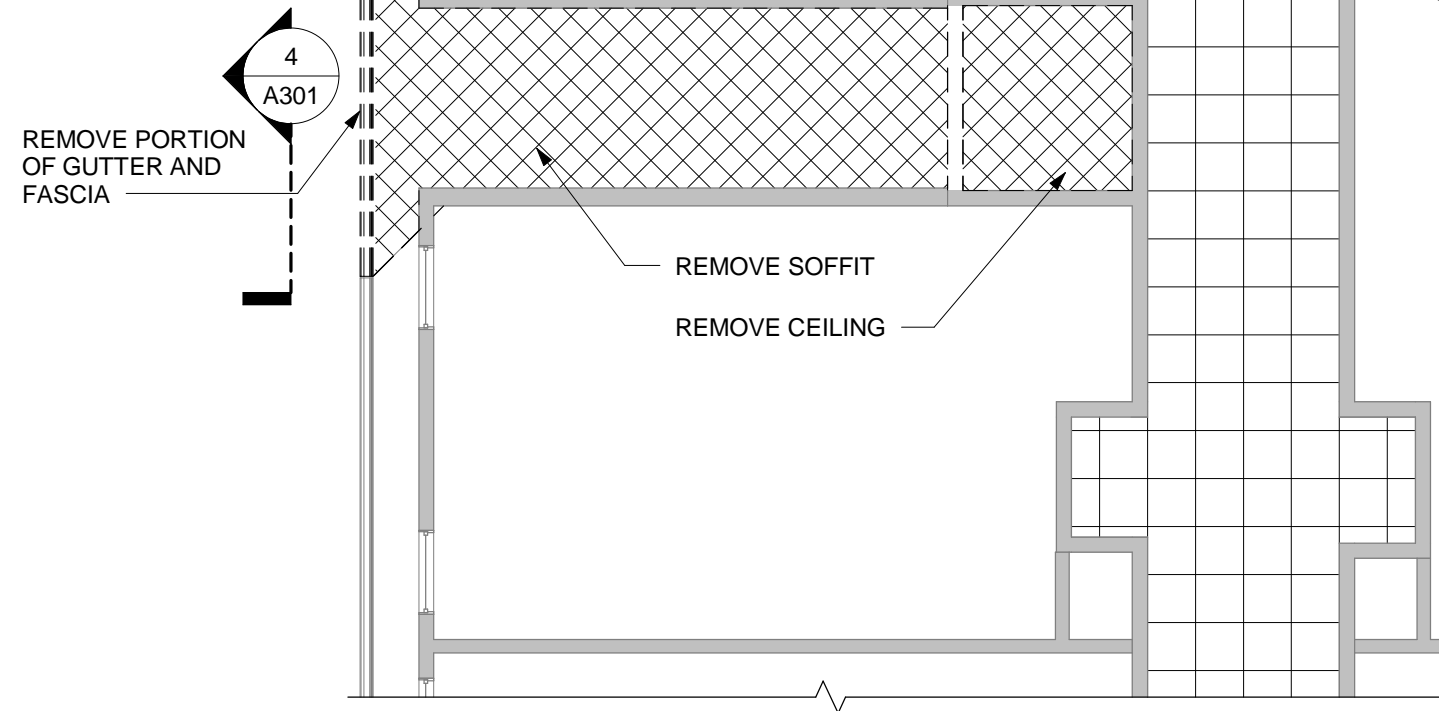
Phillip C. Showell Elementary School Classroom Addition
Pre-Bid Construction Schedule
May 6, 2015



| | | | | | | | |
|-----------------|--|--------------------|--|-----------------------|--|--------------------|--|
| Task | | Inactive Task | | Manual Summary Rollup | | External Milestone | |
| Split | | Inactive Milestone | | Manual Summary | | Deadline | |
| Milestone | | Inactive Summary | | Start-only | | Progress | |
| Summary | | Manual Task | | Finish-only | | Manual Progress | |
| Project Summary | | Duration-only | | External Tasks | | | |

GENERAL DEMOLITION NOTES

- 1) THE OWNER WILL REMOVE ALL FURNITURE AND EQUIPMENT PRIOR TO COMMENCEMENT OF DEMOLITION ACTIVITY
- 2) ALL KNOWN HAZARDOUS MATERIALS WILL BE REMOVED BY THE OWNER PRIOR TO COMMENCEMENT OF DEMOLITION ACTIVITY. SEE SPECIFICATION PROCEDURE FOR HAZARDOUS MATERIALS ENCOUNTERED DURING DEMOLITION.
- 3) SEE CIVIL, STRUCTURAL, MECHANICAL, PLUMBING, AND ELECTRICAL DRAWINGS FOR ADDITIONAL WORK.
- 4) SEE ENLARGED DEMOLITION PLANS FOR ADDITIONAL INFORMATION
- 5) FIELD VERIFY ALL EXISTING CONDITIONS.
- 6) EXISTING WORK TO REMAIN SHALL BE PTECTED FROM DEMOLITION OPERATIONS.
- 7) COORDINATE EXTENT OF DEMOLITION REQUIRED WITH NEW WORK.
- 8) CONTRACTOR TO PROVIDE TEMPORARY BRACING AND SHORING AS REQUIRED TO ACCOMPLISH DEMOLITION ACTIVITIES AND MAINTAIN STRUCTURAL STABILITY UNTIL NEW WORK IS INSTALLED.
- 9) CEILING DEMOLITION WHERE NOTED INCLUDES ALL ASSOCIATED FASTENERS, WIRE, AND NETTING. ACOUSTICAL TILE ADHERED TO, OR INSTALLED ON METAL SPLINES OVER PLASTER/GWB IS CONSIDERED ONE SYSTEM.
- 10) UNLESS OTHERWISE INDICATED, INFILL, PATCH, AND REPAIR SURFACES AT DEMOLISHED ITEMS TO MATCH ADJACENT UNDAMAGED SURFACES.

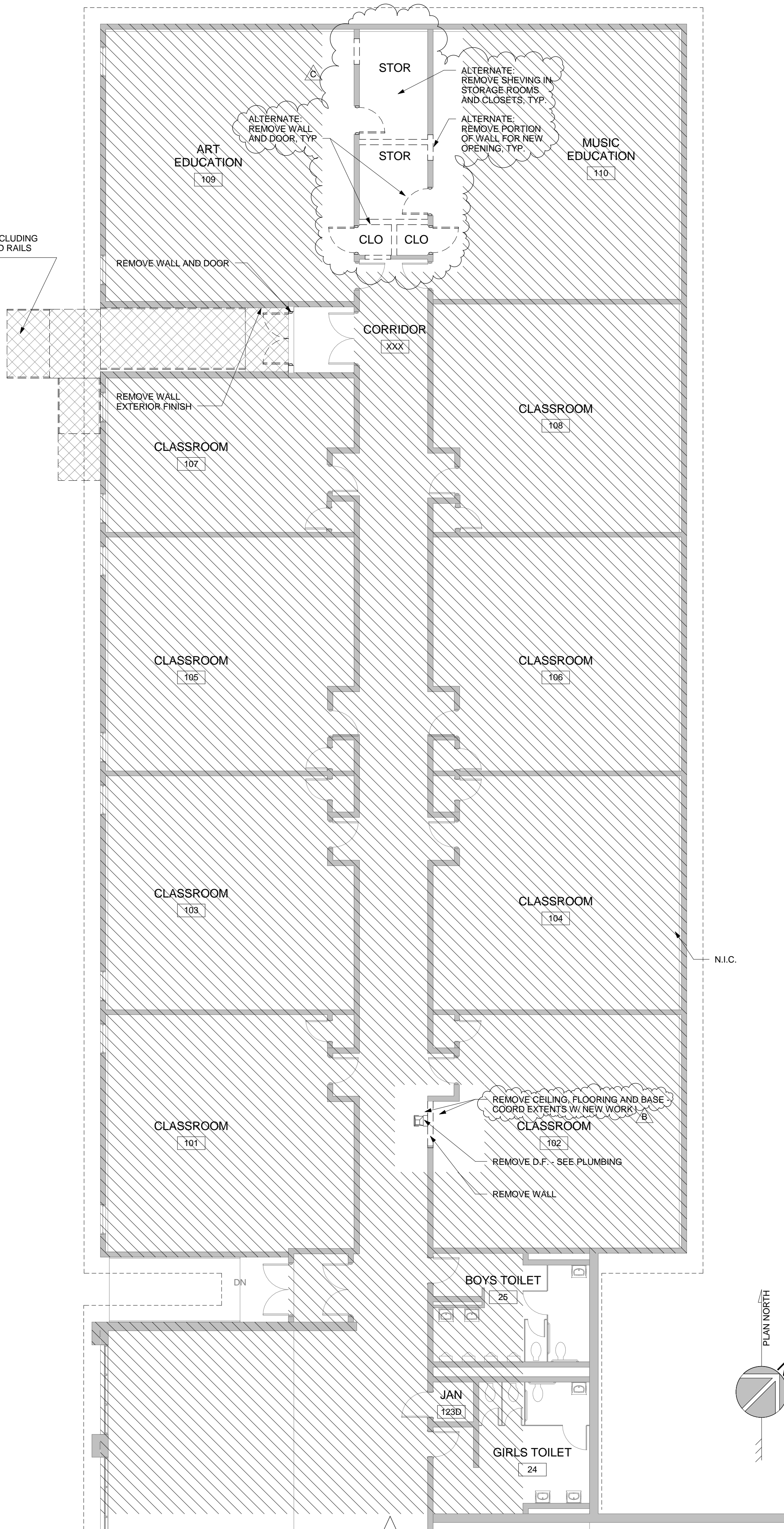


PARTIAL CEILING DEMOLITION PLAN

2

SCALE: 1/8" = 1'-0"

REMOVE RAMP, INCLUDING FOUNDATIONS AND RAILS BACK TO DOOR



1

FIRST FLOOR DEMOLITION PLAN

SCALE: 1/8" = 1'-0"

BECKER
MORGAN
GROUP

ARCHITECTURE
ENGINEERING

Dover, DE

309 S Governors Ave
Dover, DE 19904
302.734.7950

Salisbury, MD

312 West Main St, Suite 300
Salisbury, MD 21801
410.546.9100

Wilmington, NC

3205 Randall Parkway, Suite 211
Wilmington, NC 28403
910.341.7600

www.beckermorgan.com

MACINTOSH ENGINEERING

STRUCTURAL ENGINEERS

300 DELAWARE AVENUE SUITE 820
WILMINGTON, DE 19801

(302) 252-9200 fax: (302) 252-9201

ALLEN & SHARIFF ENGINEERING

PLUMBING, MECHANICAL AND ELECTRICAL
ENGINEERS

205 EAST MARKET STREET
SALISBURY, MD 21801
(410) 314-0200

EDIS COMPANY

CONSTRUCTION MANAGER

110 SOUTH POPLAR STREET SUITE 400
WILMINTON, DE 19801

(800) 995-3347

THE PROFESSIONAL SERVICES OF THE
ARCHITECT ARE UNDERTAKEN FOR AND ARE
PERFORMED IN THE INTEREST OF:
1) INDIAN RIVER SCHOOL DISTRICT
NO CONTRACTUAL OBLIGATION IS
ASSUMED BY THE ARCHITECT FOR THE
BENEFIT OF ANY OTHER PERSON INVOLVED
IN THE PROJECT.

PROJECT TITLE

ADDITION TO

PHILLIP C.
SHOWELL
ELEMENTARY

41 BETHANY RD
SELBYVILLE, DE 19975

SHEET TITLE

FIRST FLOOR
DEMOLITION PLAN

8' 4' 0' 8'

SCALE : 1/8" = 1'-0"

ISSUE BLOCK

| Mark | Date | Description |
|------|----------|-------------|
| C | 05/06/15 | ADDENDUM 3 |
| B | 05/01/15 | ADDENDUM 2 |

PROJECT NO: 2013157.03

DATE: MARCH 25, 2015

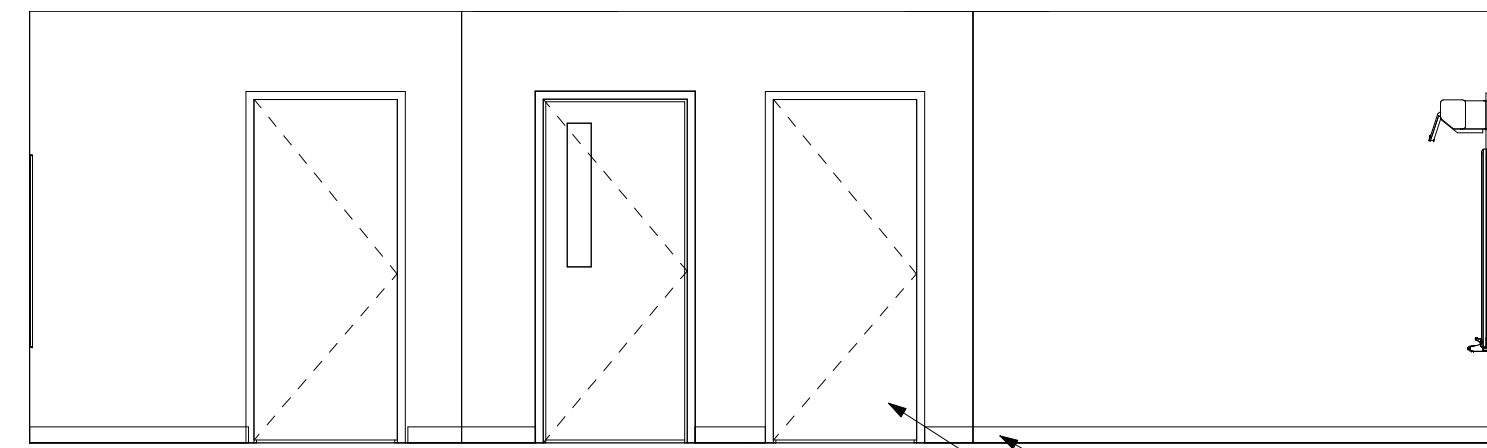
SCALE: As indicated

DRAWN BY: SER PROJ MGR: JML

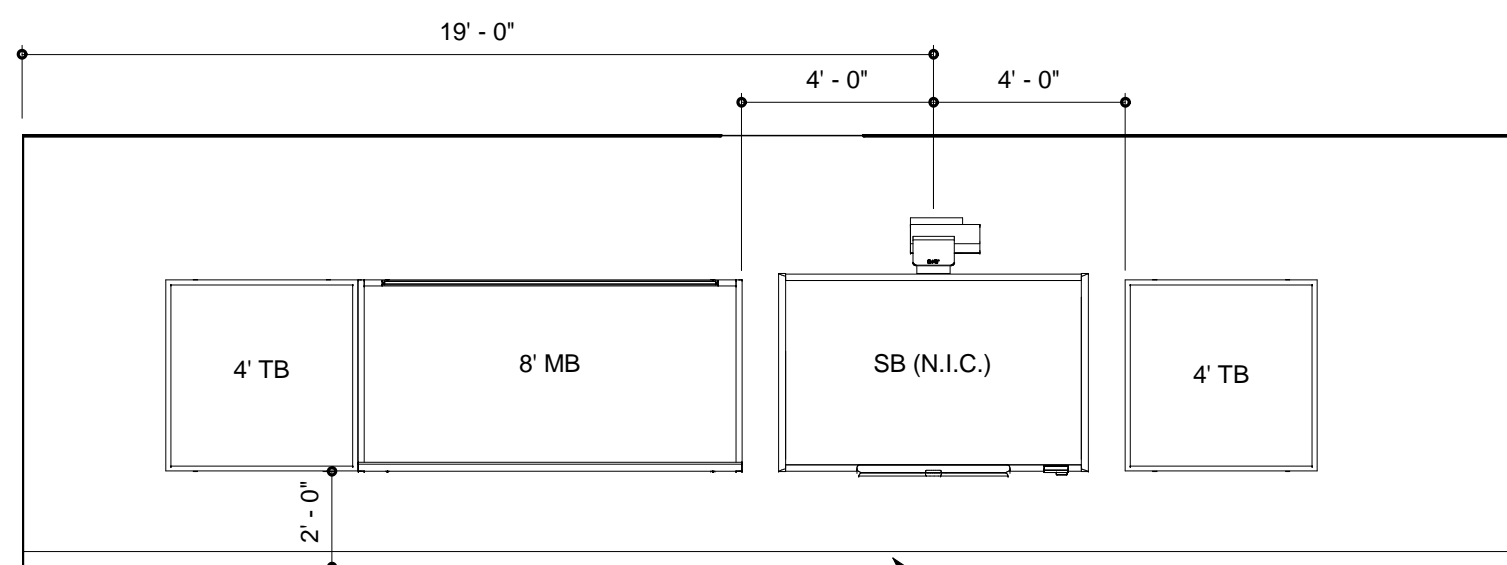
AD101

COPYRIGHT © 2015

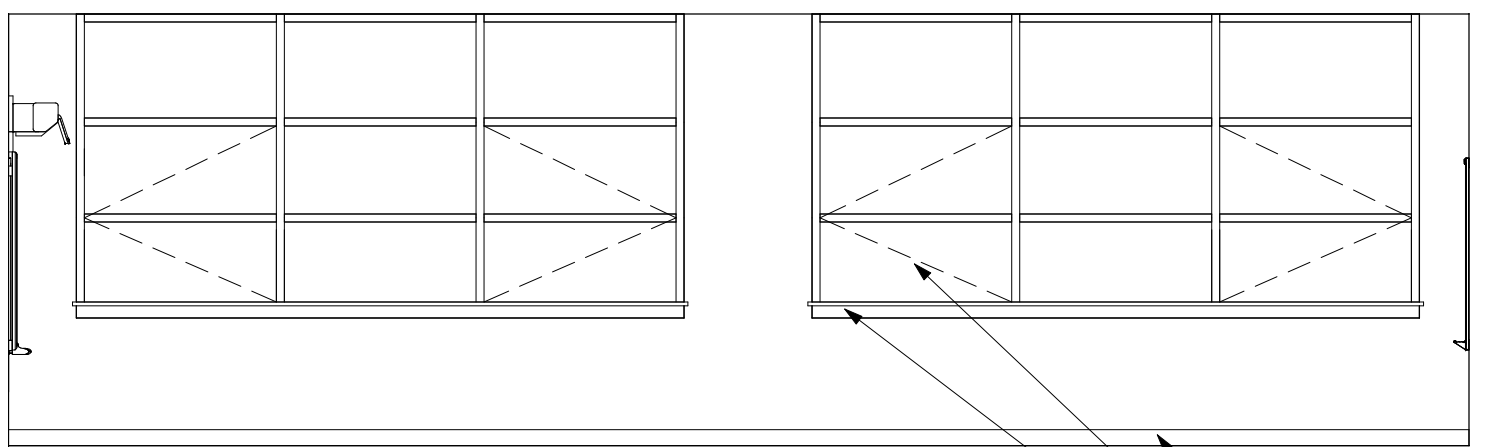
C:\Users\jlpka\Documents\2013157\03_jlpka.rvt 5/5/2015 10:20:34 PM



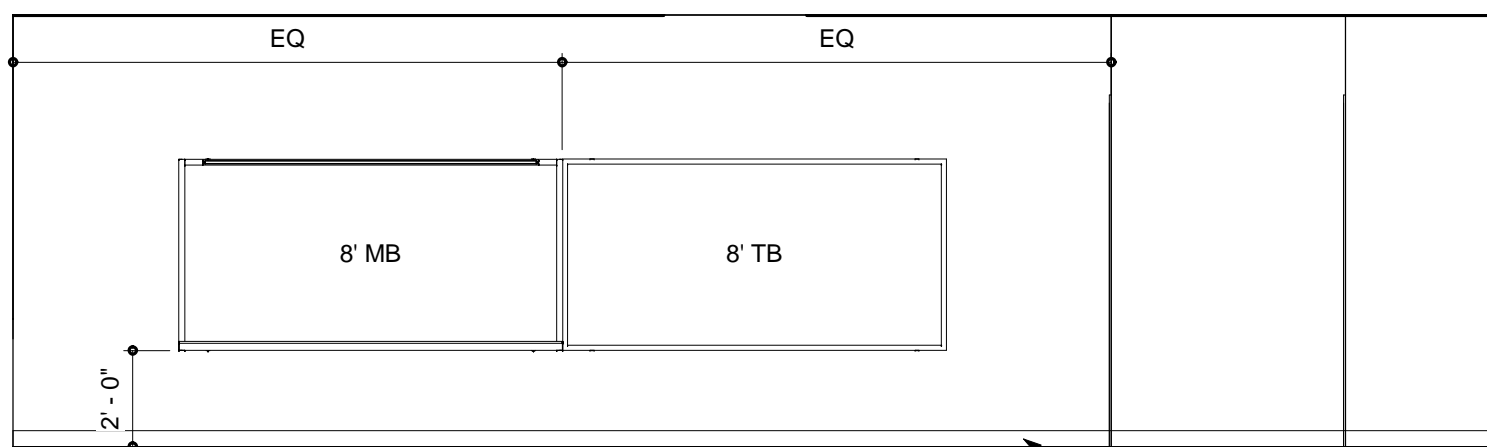
3 TYPICAL CLASSROOM
CORRIDOR WALL ELEVATION
SCALE: 1/4" = 1'-0"



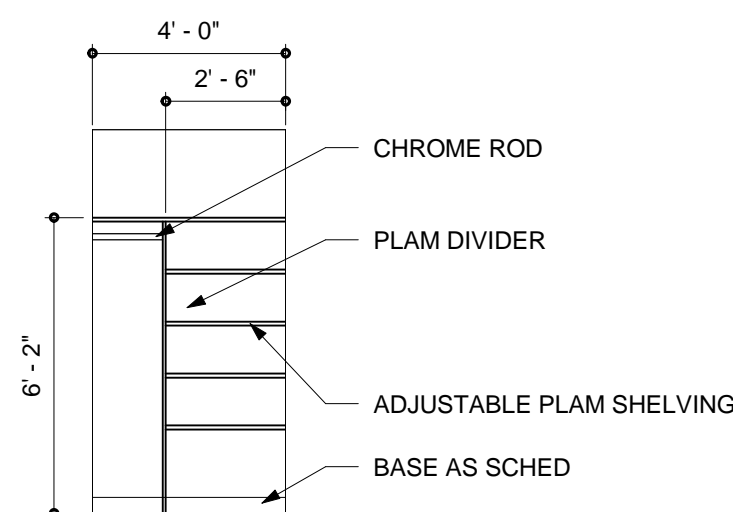
4 TYPICAL CLASSROOM
TEACHING WALL ELEVATION
SCALE: 1/4" = 1'-0"



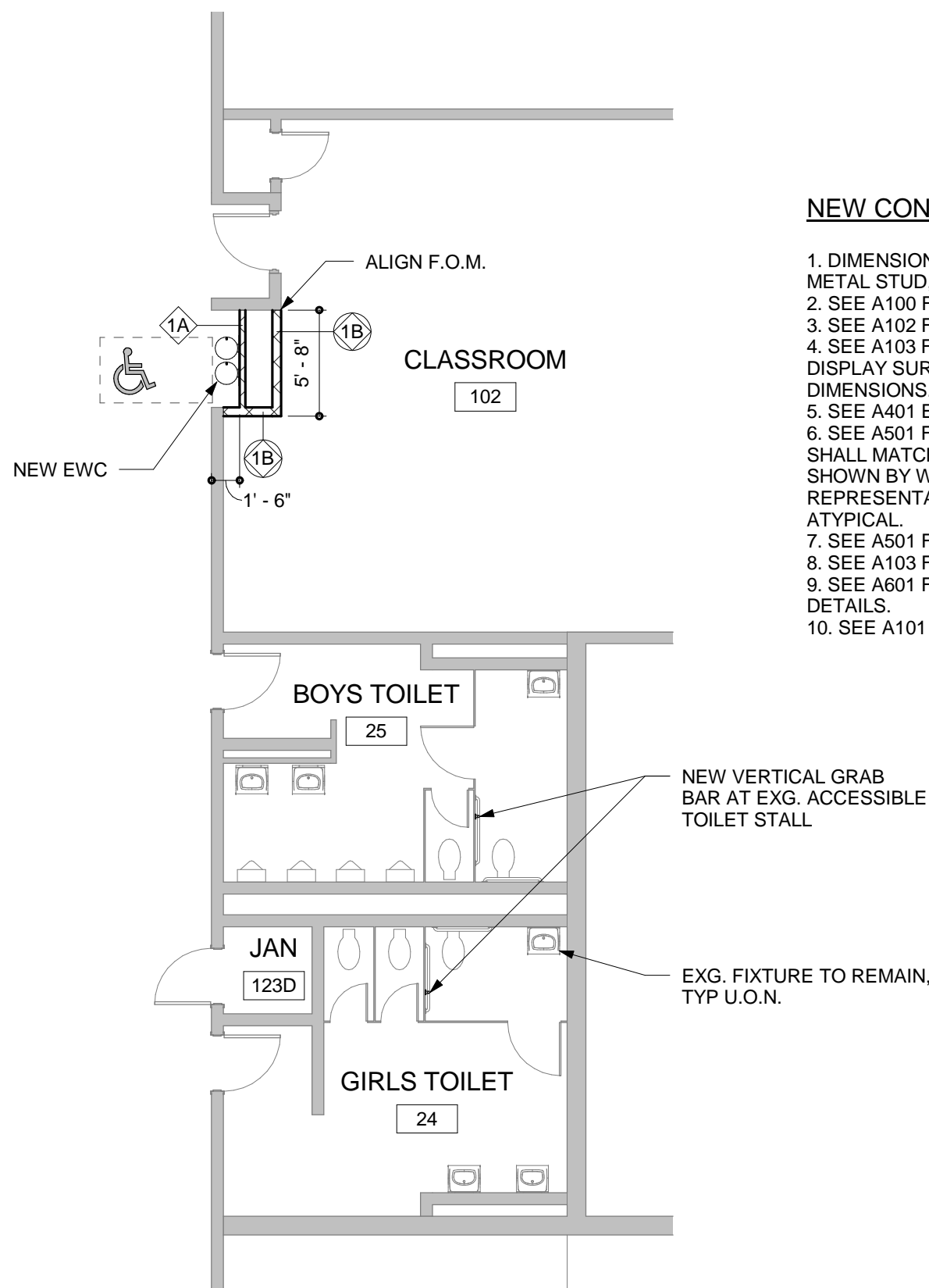
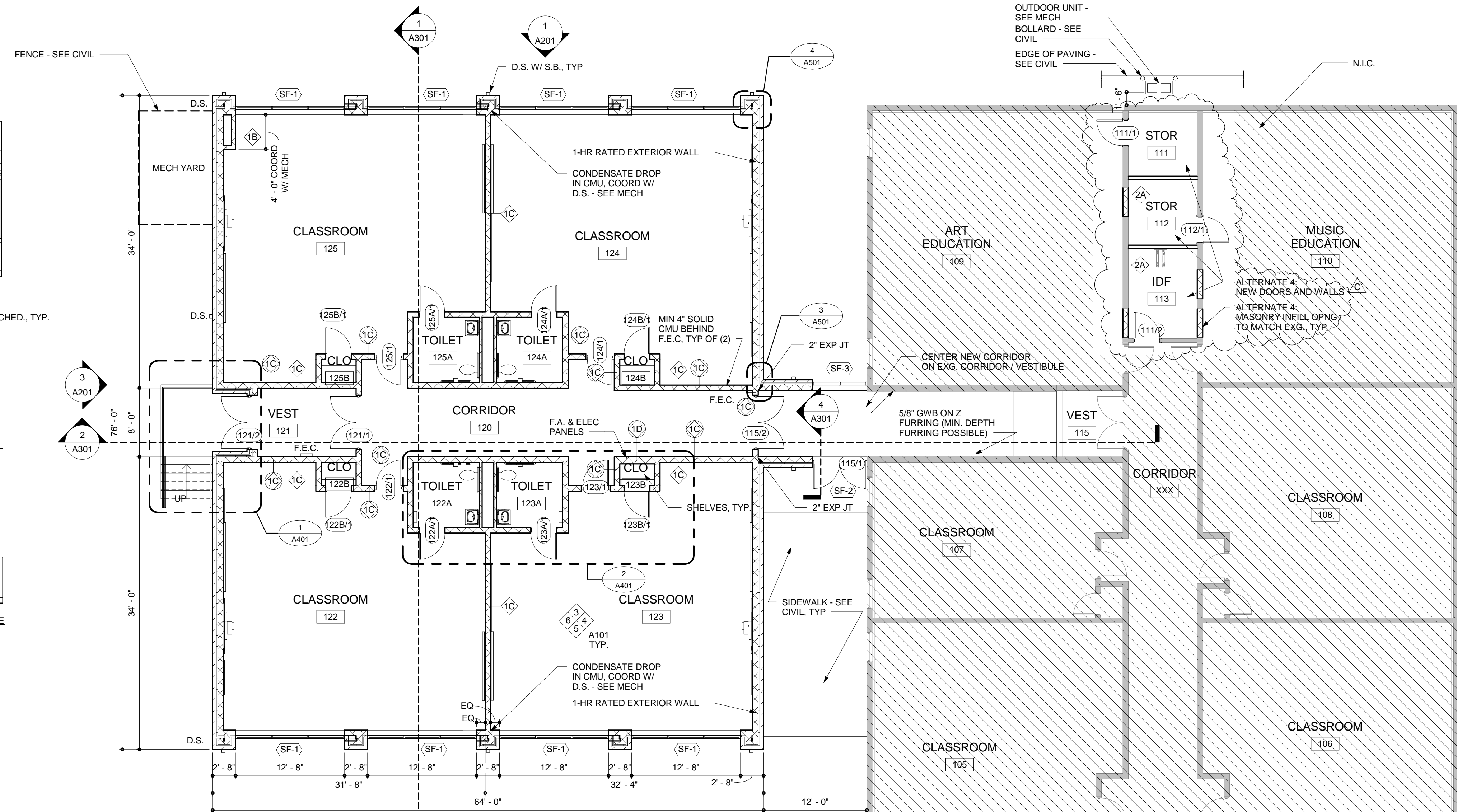
5 TYPICAL CLASSROOM
EXTERIOR WALL ELEVATION
SCALE: 1/4" = 1'-0"



6 TYPICAL CLASSROOM BACK
WALL ELEVATION
SCALE: 1/4" = 1'-0"



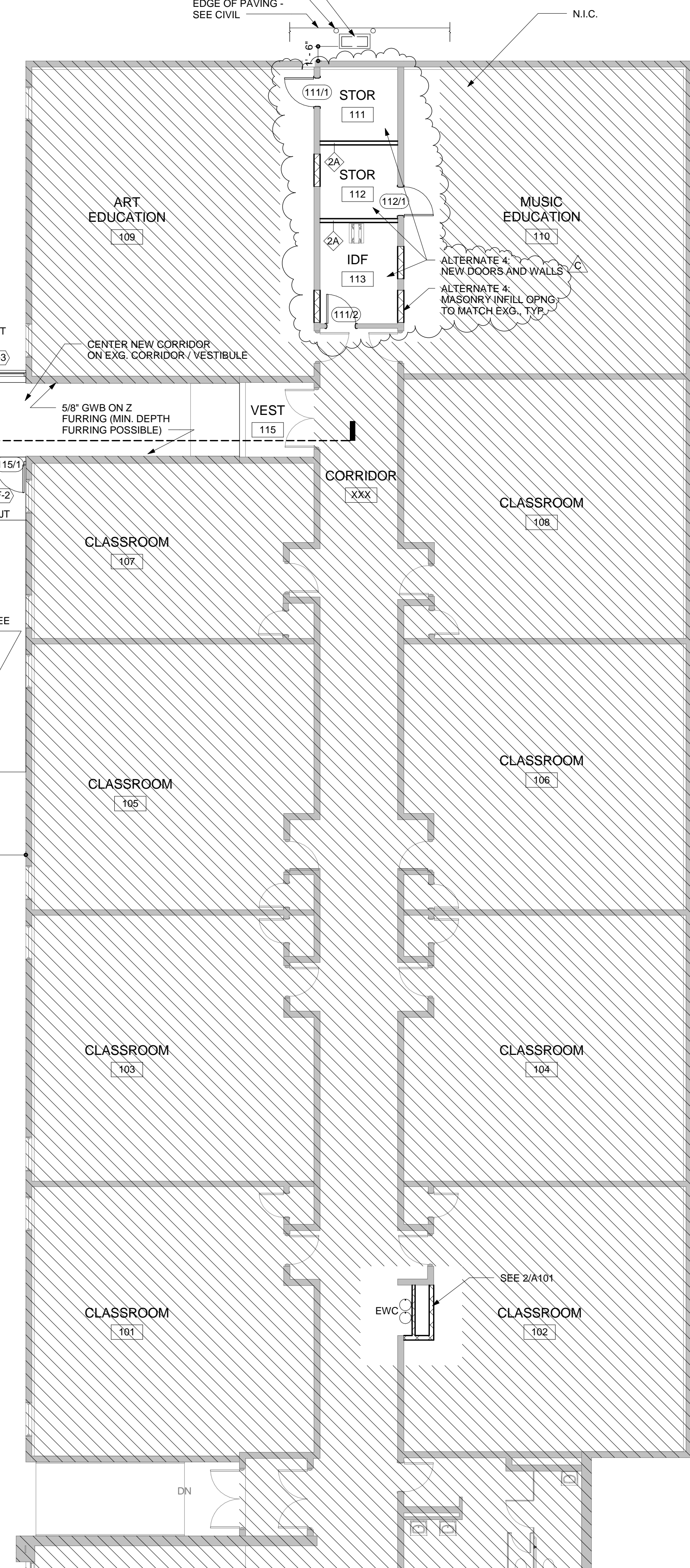
7 TYPICAL CLOSET SHELVES
SCALE: 1/4" = 1'-0"



2 FLOOR PLAN AT TOILETS AND
DRINKING FOUNTAIN
SCALE: 1/8" = 1'-0"

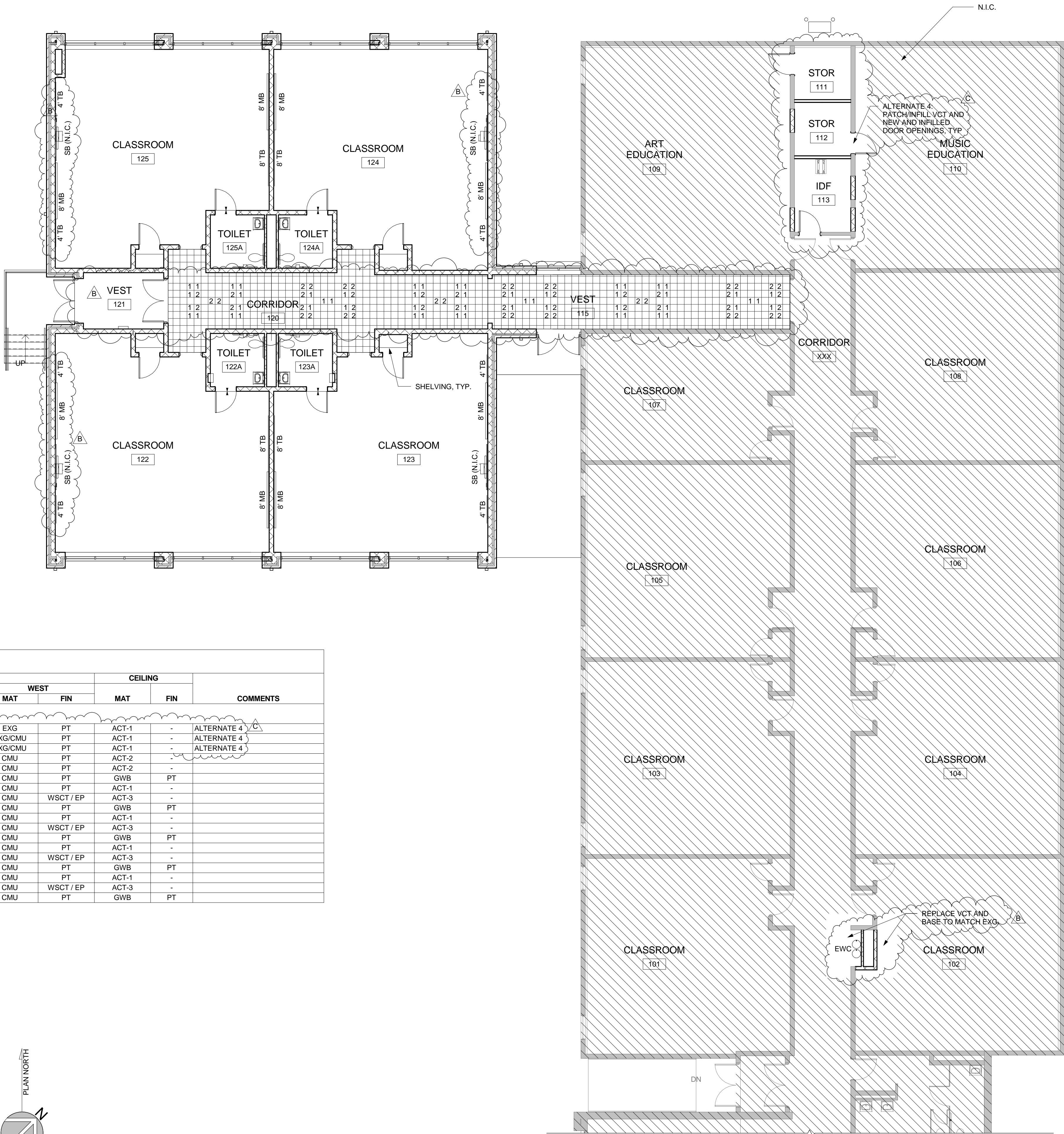
NEW CONSTRUCTION NOTES

1. DIMENSIONS ARE FROM FACE OF MASONRY AND FACE OF METAL STUD, UNLESS OTHERWISE NOTED.
2. SEE A100 FOR ROOF PLAN.
3. SEE A102 FOR REFLECTED CEILING PLAN.
4. SEE A103 FOR FINISH, FLOOR PATTERN, CASEWORK, VISUAL DISPLAY SURFACES, AND MISCELLANEOUS NOTES AND DIMENSIONS.
5. SEE A401 ENLARGED TOILET PLANS.
6. SEE A501 FOR WALL TYPES AND DETAILS. CHASE WALLS SHALL MATCH ADJACENT CONSTRUCTION UNLESS OTHERWISE SHOWN BY WALL TYPE. CHASES HAVE WALL TYPES SHOWN AT REPRESENTATIVE LOCATIONS, AND WHERE CONSTRUCTION IS ATYPICAL.
7. SEE A501 FOR SIGN AND RAILING DETAILS.
8. SEE A103 FOR FINISH AND COLOR SCHEDULES.
9. SEE A601 FOR DOOR SCHEDULE DOOR AND FRAME TYPES AND DETAILS.
10. SEE A101 FOR INTERIOR ELEVATIONS.

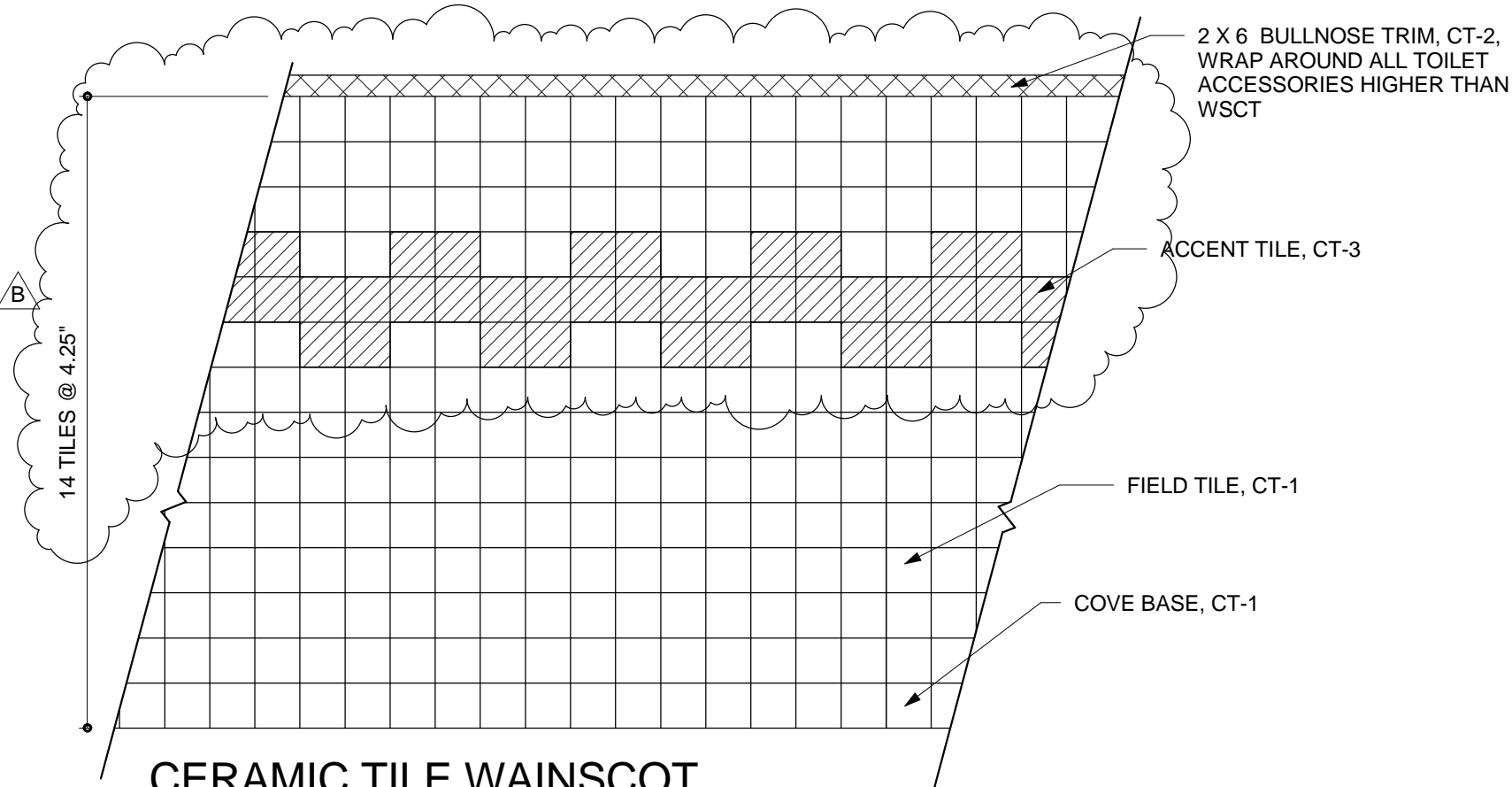


1 FIRST FLOOR PLAN
SCALE: 1/8" = 1'-0"

| FINISH SCHEDULE LEGEND | | |
|---|--|---------------|
| KEY NAME | DESCRIPTION | SPEC. REF |
| FLOOR | | |
| BRK | BRICK | 042000 |
| CPT | TILE WALK-OFF MAT | 096816 |
| EPX | RESINOUS FLOORING | 096623 |
| EXG | EXG. CONDITION TO REMAIN | |
| VCT | VINYL COMPOSITION TILE | 096519 |
| BASE | | |
| CT | CERAMIC TILE BASE | 093000 |
| R | RESILIENT WALL BASE | 096513 |
| WALL | | |
| - | NOT APPLICABLE | |
| CMU | CONCRETE MASONRY UNIT | 042000 |
| EP | EPOXY PAINT | 099123 |
| EXG | EXG. CONDITION TO REMAIN | |
| GWB | GYPSUM WALL BOARD | 092900 |
| PT | PAINT | 099123 |
| WSCT | CERAMIC TILE WAINSCOT TO 5'-0" AFF W/ CMU ABOVE | 093000/042000 |
| CEILING | | |
| - | NOT APPLICABLE | |
| ACT1 | 2X4 ACCOUSTICAL CEILING TILE | 095123 |
| ACT2 | 2X2 ACCOUSTICAL CEILING TILE | 095123 |
| ACT3 | 2X2 SCRUBBLE | 095123 |
| GWB | GYPSUM BOARD CEILING | 092900 |
| PT | PAINT | 099123 |
| ORIENTATION | | |
| ON PLANS NORTH WALL IS DOWN, EAST IS LEFT, SOUTH IS UP, WEST IS RIGHT | | |
| FLOOR | | |
| - | NOT APPLICABLE | |
| GENERAL NOTES | | |
| 1 | WALLS AND CEILINGS MAY CONTAIN MORE THAN ONE MATERIAL OR FINISH AS INDICATED. COORDINATE WITH CONSTRUCTION TYPE AND FINISH SIMILAR TO ADJACENT MATERIALS | |
| 2 | SEE A104 AND A105 REFLECTED CEILING PLANS & CEILING NOTES FOR CEILING HEIGHTS, MATERIAL EXTENTS, LOCATIONS AND HEIGHTS OF BULKHEADS, SOFFITS, ETC. | |
| 3 | PLAN WALL TYPES TAKE PRECEDENCE OVER SCHEDULED WALL FINISH. PROVIDE APPROPRIATE WALL FINISH TO CORRESPOND TO WALL TYPES. | |
| 4 | MOLD AND MOISTURE RESISTANT GYPSUM BOARD SHALL BE USED AT ALL KITCHEN AREAS, TOILET ROOMS AND CUSTODIAN SERVICE CLOSETS SCHEDULED TO HAVE GYPSUM BOARD FINISHES | |
| 5 | WALL AND CEILING FINISHES SHALL INCLUDE ALL PROJECTIONS, BEAM ENCLOSURES, RECESSES, BULKHEADS, MATERIAL CHANGES, OR OTHER ENCLOSURES. REFER TO REFLECTED CEILING PLANS | |
| 6 | PROVIDE SEALANT/CAULK AT INTERSECTIONS OF DISSIMILAR MATERIALS AND AS RECOMMENDED BY MANUFACTURERS' GUIDELINES. | |
| 7 | ALL NEW PARTITIONS AND WALLS SHALL BE PAINTED. PROVIDE PRICING TO REPAINT EXISTING WALLS | |



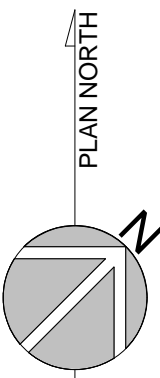
| FINISH SCHEDULE | | | | | | | | | | | | | | | |
|------------------|-----------|-------|----------|-------|-----------|---------|-----------|-------|-----------|---------|-----------|---------|-----|-------------|--|
| # | ROOM NAME | FLOOR | | WALL | | | | | | | | CEILING | | COMMENTS | |
| | | MAT | BASE MAT | NORTH | | EAST | | SOUTH | | WEST | | MAT | FIN | | |
| | | | | MAT | FIN | MAT | FIN | MAT | FIN | MAT | FIN | | | | |
| FIRST FLOOR PLAN | | | | | | | | | | | | | | | |
| 111 | STOR | VCT | R | EXG | PT | EXG | PT | GWB | PT | EXG | PT | ACT-1 | - | ALTERNATE 4 | |
| 112 | STOR | VCT | R | GWB | PT | EXG | PT | GWB | PT | EXG/CMU | PT | ACT-1 | - | ALTERNATE 4 | |
| 113 | IDF | VCT | R | GWB | PT | EXG/CMU | PT | EXG | PT | EXG/CMU | PT | ACT-1 | - | ALTERNATE 4 | |
| 115 | VEST | VCT | R | CMU | PT | CMU | PT | CMU | PT | CMU | PT | ACT-2 | - | | |
| 120 | CORRIDOR | VCT | R | CMU | PT | CMU | PT | CMU | PT | CMU | PT | ACT-2 | - | | |
| 121 | VEST | CPT | R | CMU | PT | CMU | PT | CMU | PT | CMU | PT | GWB | PT | | |
| 122 | CLASSROOM | VCT | R | CMU | PT | CMU | PT | CMU | PT | CMU | PT | ACT-1 | - | | |
| 122A | TOILET | EPX | CT | CMU | WSCT / EP | CMU | WSCT / EP | CMU | WSCT / EP | CMU | WSCT / EP | ACT-3 | - | | |
| 122B | CLO | VCT | R | CMU | PT | CMU | PT | CMU | PT | CMU | PT | GWB | PT | | |
| 123 | CLASSROOM | VCT | R | CMU | PT | CMU | PT | CMU | PT | CMU | PT | ACT-1 | - | | |
| 123A | TOILET | EPX | CT | CMU | WSCT / EP | CMU | WSCT / EP | CMU | WSCT / EP | CMU | WSCT / EP | ACT-3 | - | | |
| 123B | CLO | VCT | R | CMU | PT | CMU | PT | CMU | PT | CMU | PT | GWB | PT | | |
| 124 | CLASSROOM | VCT | R | CMU | PT | CMU | PT | CMU | PT | CMU | PT | ACT-1 | - | | |
| 124A | TOILET | EPX | CT | CMU | WSCT / EP | CMU | WSCT / EP | CMU | WSCT / EP | CMU | WSCT / EP | ACT-3 | - | | |
| 124B | CLO | VCT | R | CMU | PT | CMU | PT | CMU | PT | CMU | PT | GWB | PT | | |
| 125 | CLASSROOM | VCT | R | CMU | PT | CMU | PT | CMU | PT | CMU | PT | ACT-1 | - | | |
| 125A | TOILET | EPX | CT | CMU | WSCT / EP | CMU | WSCT / EP | CMU | WSCT / EP | CMU | WSCT / EP | ACT-3 | - | | |
| 125B | CLO | VCT | R | CMU | PT | CMU | PT | CMU | PT | CMU | PT | GWB | PT | | |



2

CERAMIC TILE WAINSCOT
DETAIL

SCALE: 3/4" = 1'-0"



1

FINISH PATTERN PLAN

SCALE: 1/8" = 1'-0"

BECKER
MORGAN
GROUP

ARCHITECTURE
ENGINEERING

Dover, DE

309 S Governors Ave
Dover, DE 19904
302.734.7950

Salisbury, MD

312 West Main St, Suite 300
Salisbury, MD 21801
410.546.9100

Wilmington, NC

3205 Randall Parkway, Suite 211
Wilmington, NC 28403
910.341.7600

www.beckermorgan.com

MACINTOSH ENGINEERING

STRUCTURAL ENGINEERS

300 DELAWARE AVENUE SUITE 820
WILMINGTON, DE 19801

(302) 252-9200 fax: (302) 252-9201

ALLEN & SHARIFF ENGINEERING

PLUMBING, MECHANICAL AND ELECTRICAL
ENGINEERS

205 EAST MARKET STREET
SALISBURY, MD 21801
(410) 314-0200

EDIS COMPANY

CONSTRUCTION MANAGER

110 SOUTH POPLAR STREET SUITE 400
WILMINTON, DE 19801

(800) 995-3347

THE PROFESSIONAL SERVICES OF THE
ARCHITECT ARE UNDERTAKEN FOR AND ARE
PERFORMED IN THE INTEREST OF:
1 INDIAN RIVER SCHOOL DISTRICT
NO CONTRACTUAL OBLIGATION IS
ASSUMED BY THE ARCHITECT FOR THE
BENEFIT OF ANY OTHER PERSON INVOLVED
IN THE PROJECT.

PROJECT TITLE

ADDITION TO

PHILLIP C.
SHOWELL
ELEMENTARY

41 BETHANY RD
SELBYVILLE, DE 19975

SHEET TITLE

FINISH PLAN AND
FINISH SCHEDULE

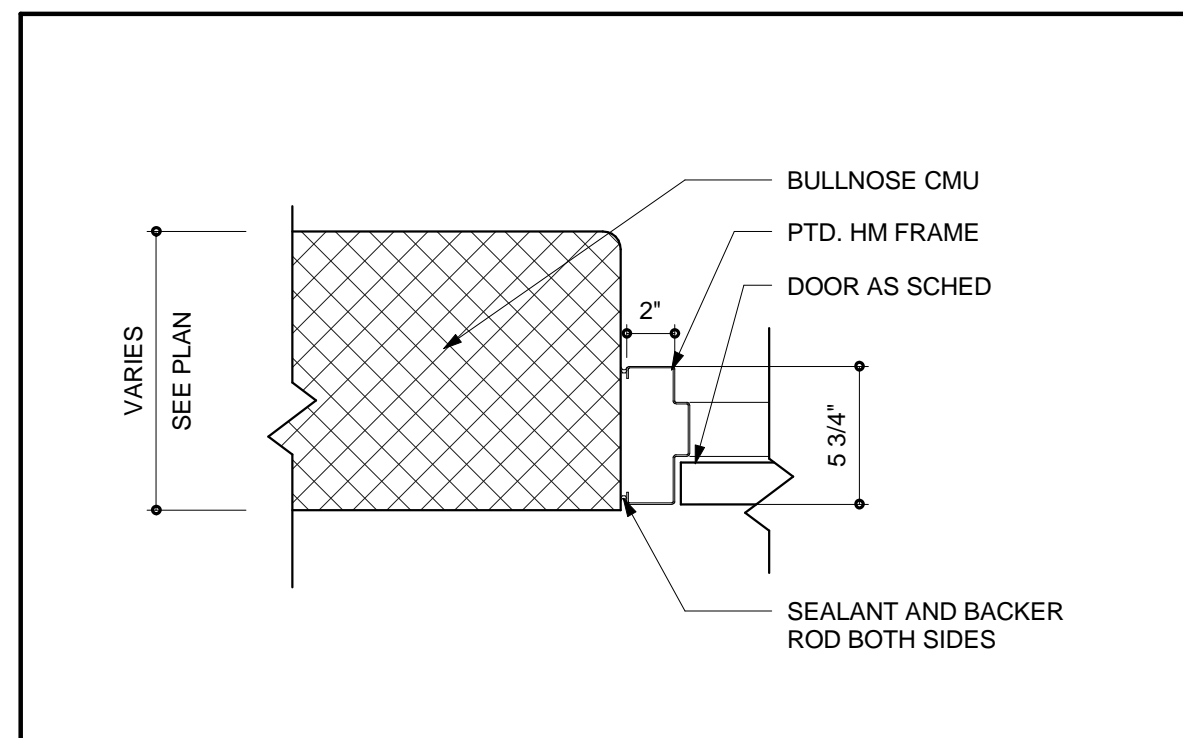
ISSUE BLOCK

| | | |
|-----------------------------|----------|-------------|
| C | 05/06/15 | ADDENDUM 3 |
| B | 05/01/15 | ADDENDUM 2 |
| Mark | Date | Description |
| PROJECT NO: 2013157.03 | | |
| DATE: MARCH 25, 2015 | | |
| SCALE: As indicated | | |
| DRAWN BY: GMS PROJ MGR: JML | | |

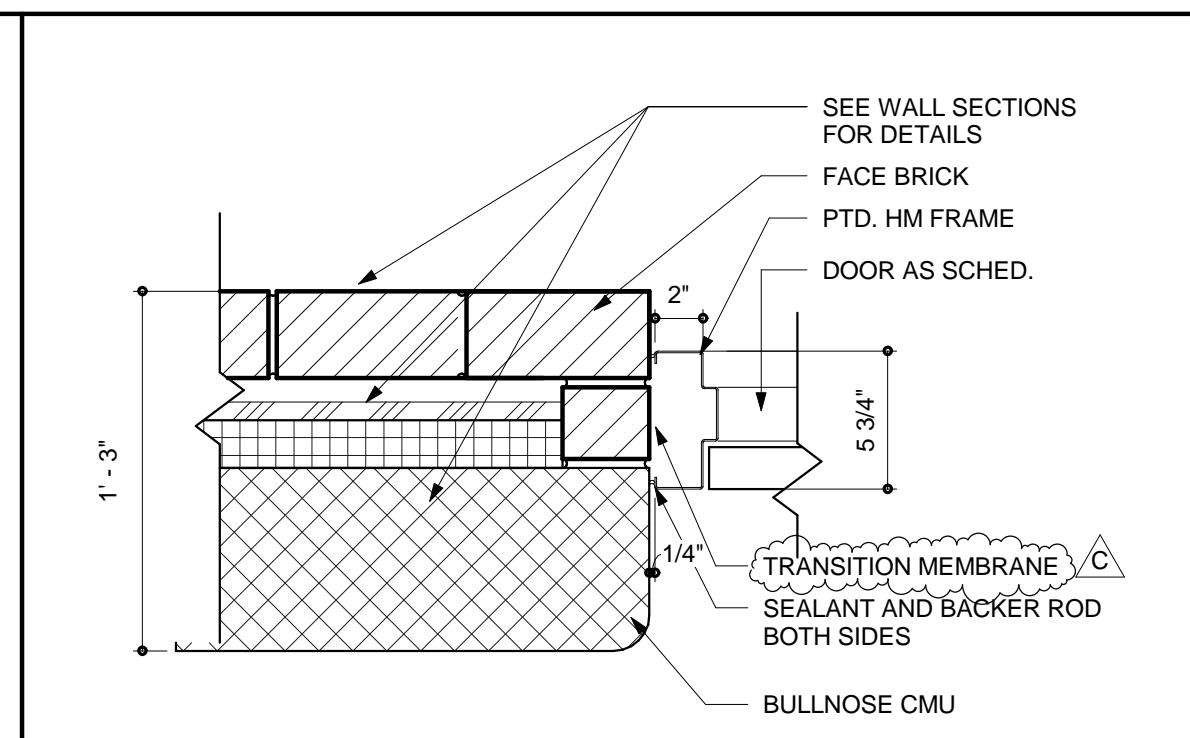
A103

COPYRIGHT © 2015

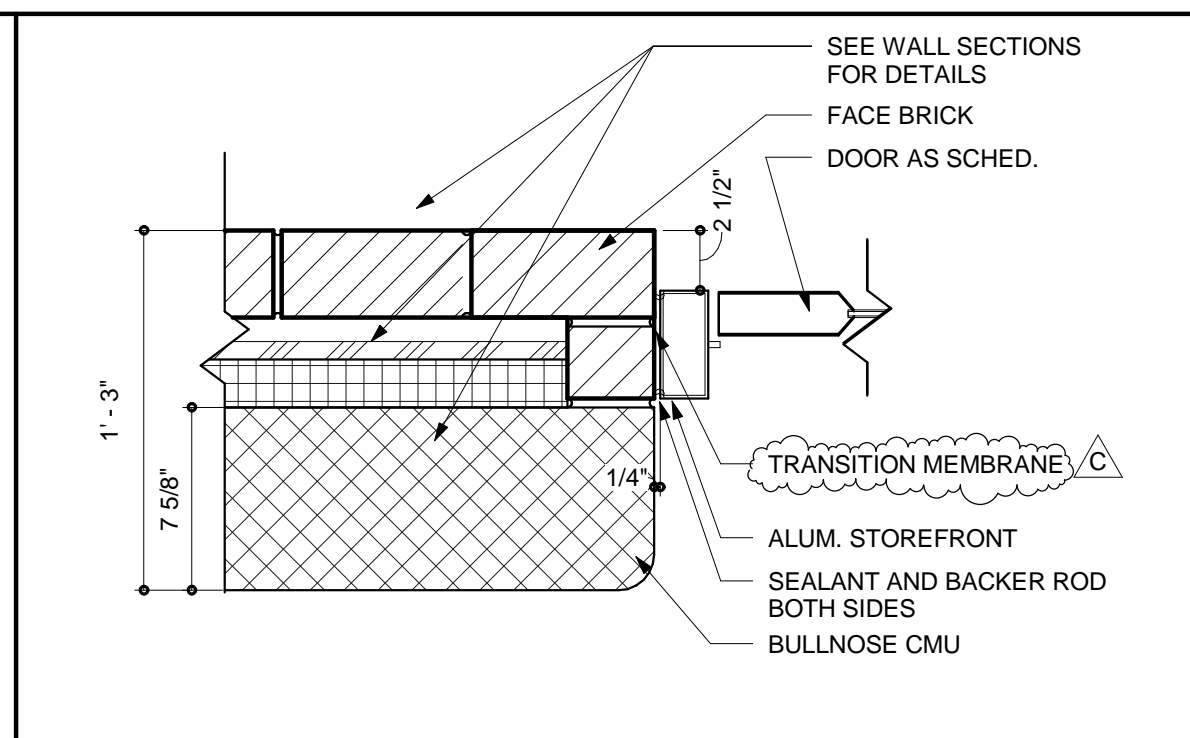
C:\Users\jlpal\Documents\201315703_jlpal.rvt 5/5/2015 10:20:32 PM



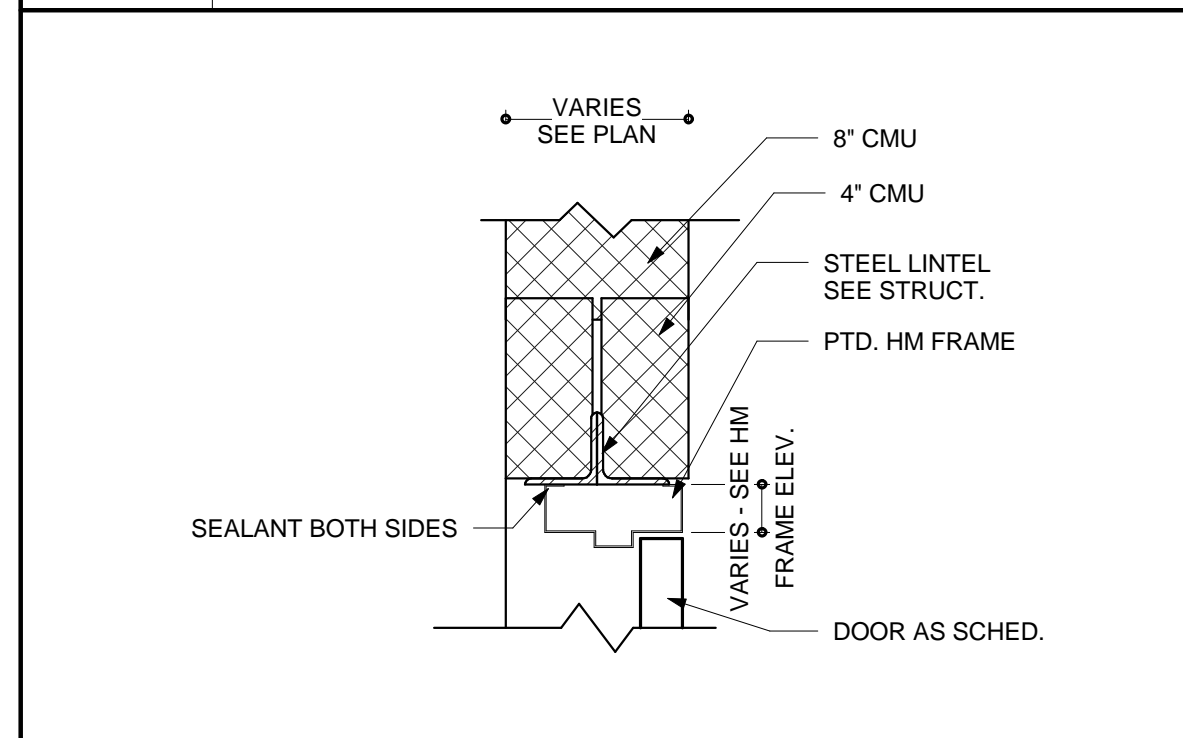
| | |
|-----------|--|
| J1 | <p style="text-align: center;">TYPICAL H.M. JAMB DETAIL @ INTERIOR MASONRY</p> <p style="text-align: right;">SCALE: 1 1/2" = 1' 0"</p> |
|-----------|--|



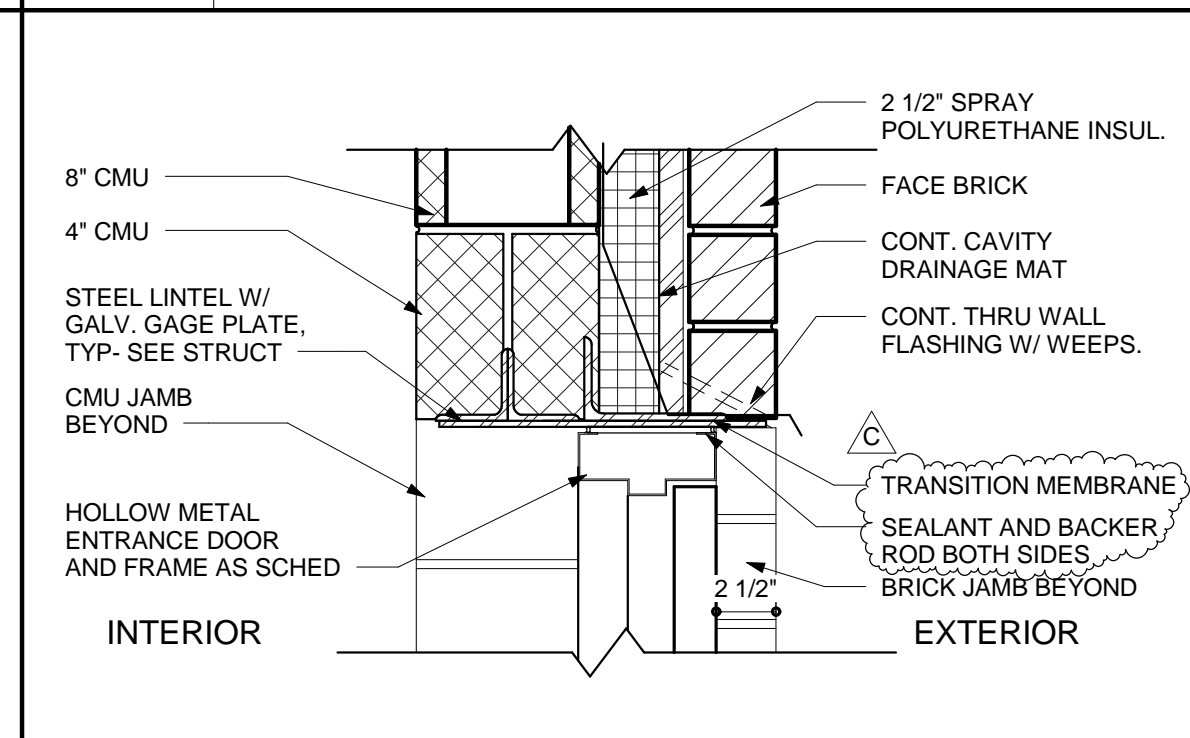
| | |
|----|--|
| J2 | H.M. JAMB DETAIL @ MASONRY VENEER WALL |
|----|--|



| | |
|----|--|
| J3 | <p>STOREFRONT JAMB DETAIL @ MASONRY VENEER WALL</p> <p>SCALE: 1 1/2" = 1' 0"</p> |
|----|--|

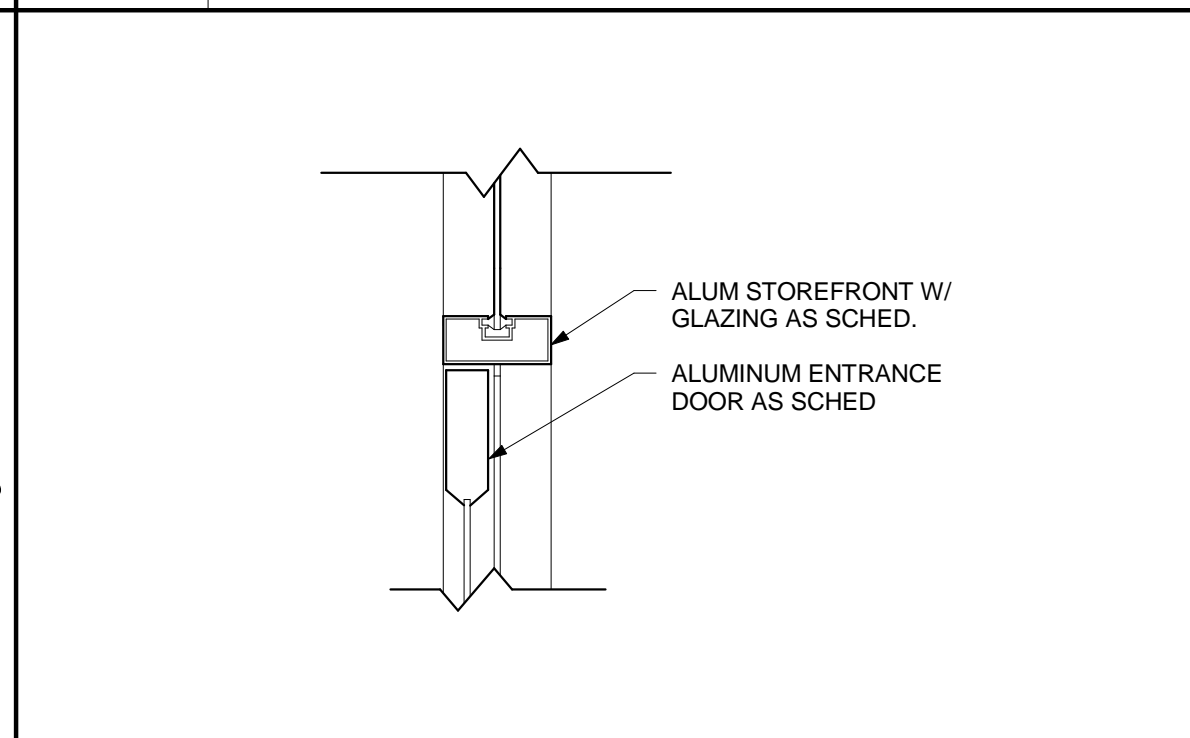


| | |
|----|---|
| H1 | <p>TYPICAL H.M. HEAD DETAIL @ INTERIOR MASONRY</p> <p>SCALE: 1 1/2" = 1' 0"</p> |
|----|---|



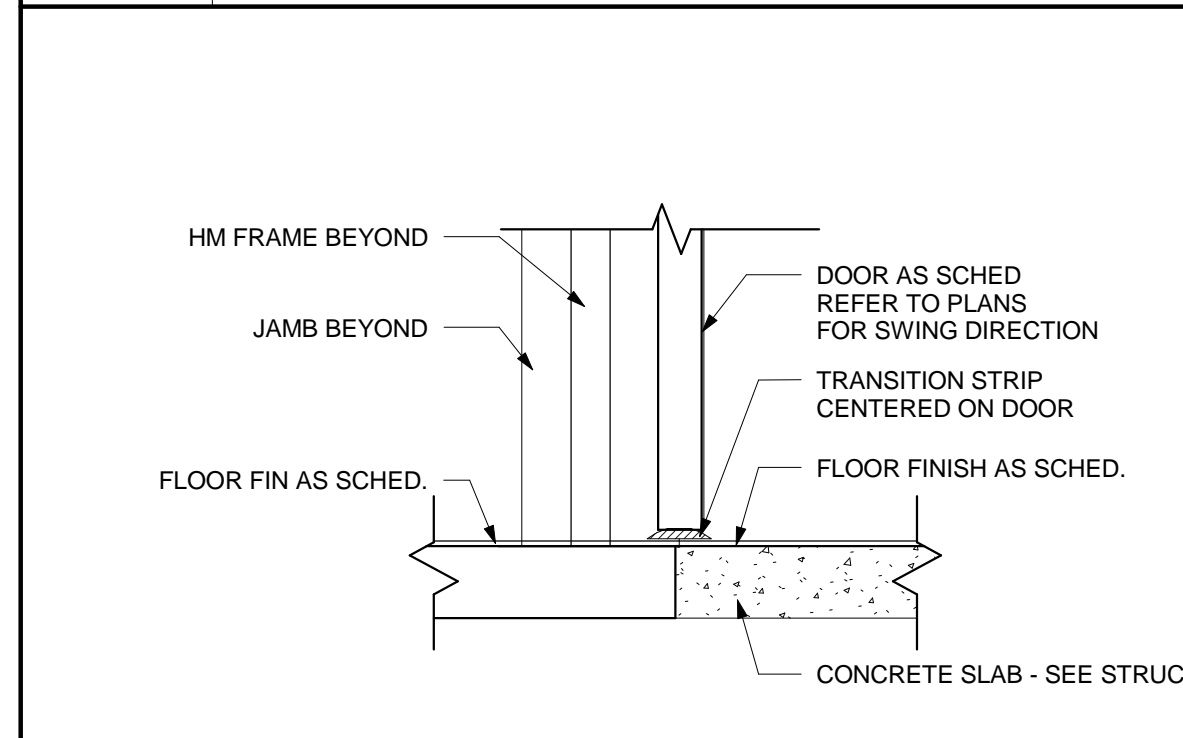
H2 H.M. HEAD DETAIL @ MASONRY VENEER WALL

SCALE: 1 1/2" = 1' 0"

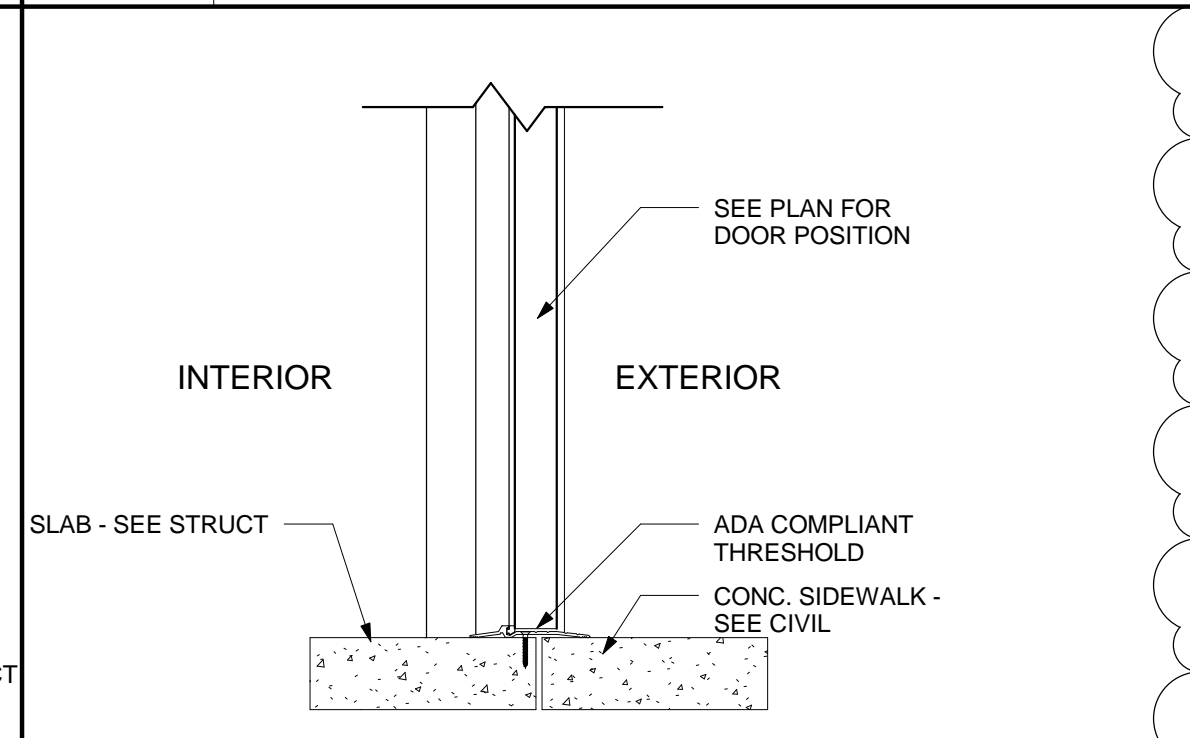


H3 TYPICAL STOREFRONT
HEAD DETAIL

SCALE: 1-1/2" = 1' 0"

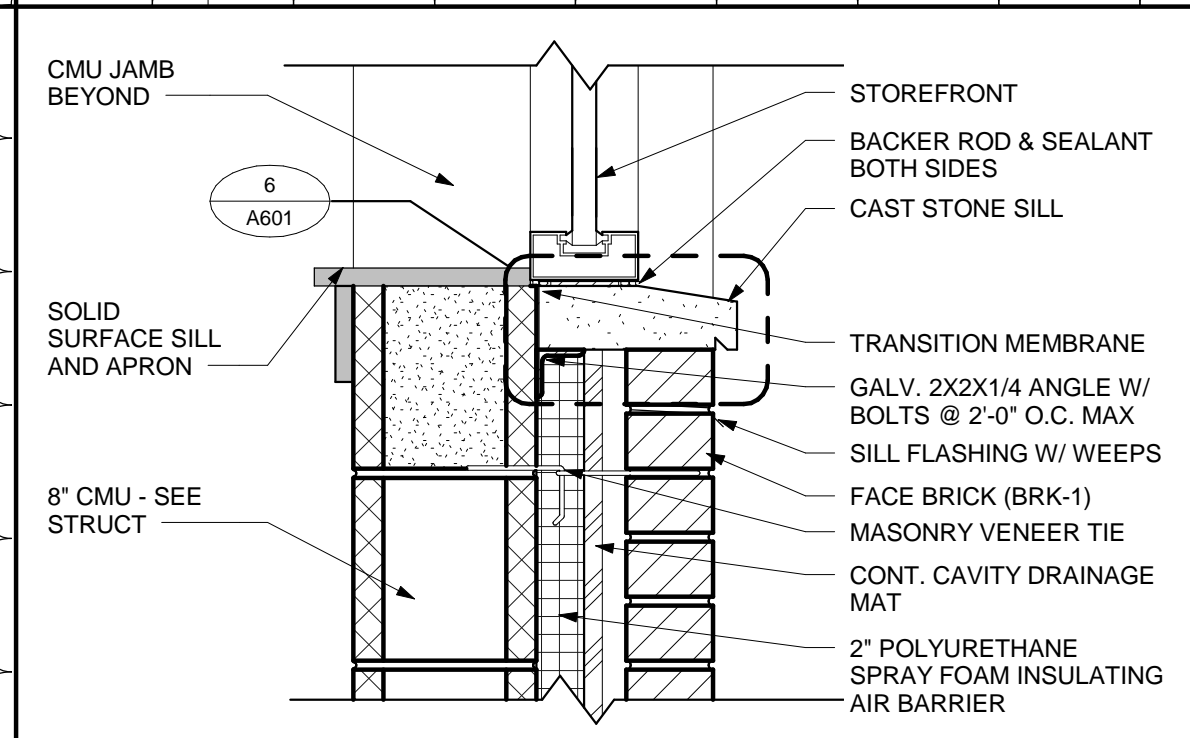


| | | |
|----|--|-----------------------|
| S1 | TYPICAL TRANSITION STRIP THRESHOLD DETAIL | SCALE: 1 1/2" = 1' 0" |
|----|--|-----------------------|

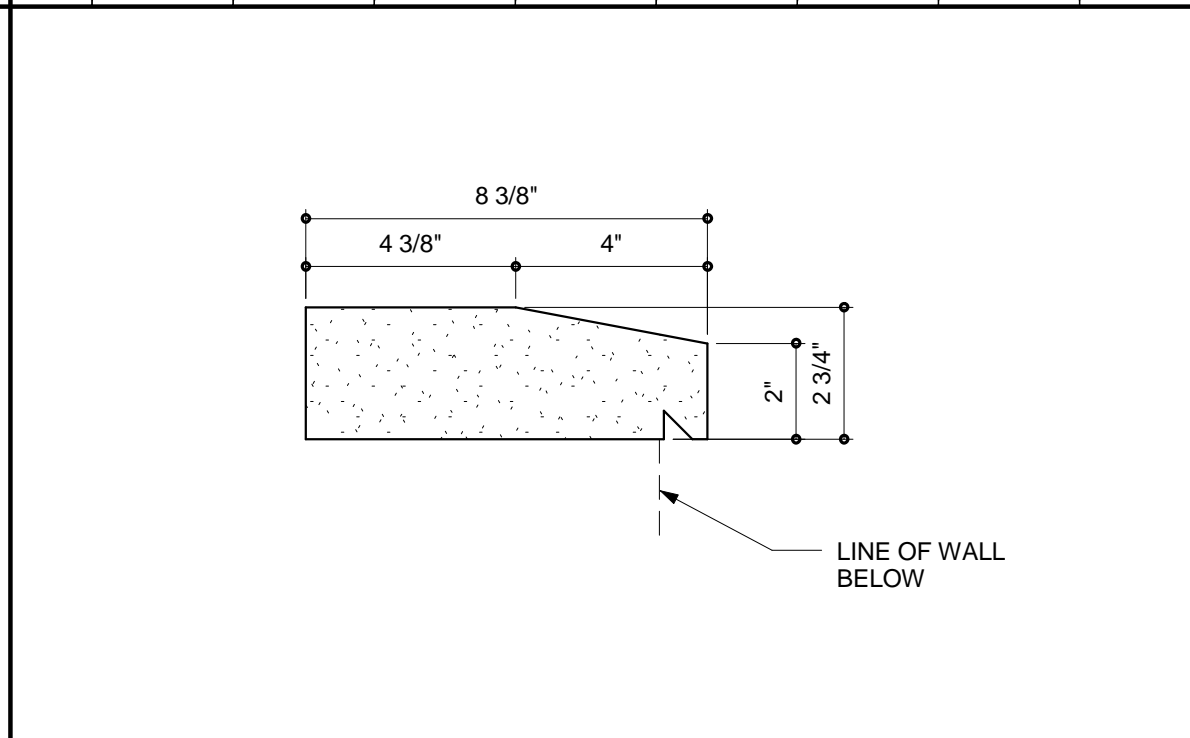


S2 TYPICAL EXTERIOR THRESHOLD DETAIL

SCALE: 1 1/2" = 1' 0"



| | | |
|----|---------------------|-----------------------|
| S3 | TYPICAL SILL DETAIL | SCALE: 1 1/2" = 1' 0" |
|----|---------------------|-----------------------|



| | | |
|---|-----------------|-------------------|
| 1 | CAST STONE SILL | SCALE: 3" = 1' 0" |
|---|-----------------|-------------------|

| DOOR SCHEDULE | | | | | | | | | | | | | | | | | | |
|------------------|-------|-------|--------|------|------|-----|------|-----------|------|------|-----|--------|--------|------|--------|-------------|-------------|----------|
| SIZE | | | | DOOR | | | | FRAME | | | | | | | | FIRE RATING | HDWE SET | COMMENTS |
| MARK | WIDTH | HT | THICK | MATL | TYPE | FIN | GLAZ | UNDER CUT | MATL | TYPE | FIN | HEAD | JAMB | SILL | | | | |
| FIRST FLOOR PLAN | | | | | | | | | | | | | | | | | | |
| 111/1 | 3'-0" | 7'-2" | 1 3/4" | SCWD | A | PT | - | 0" | HM | HM-1 | PT | H1 SIM | J1 SIM | - | - | 8.0 | ALTERNATE 4 | C |
| 111/2 | 3'-0" | 7'-2" | 1 3/4" | SCWD | A | PT | - | 0" | HM | HM-1 | PT | H1 SIM | J1 SIM | - | - | 7.0 | ALTERNATE 4 | |
| 112/1 | 3'-0" | 7'-2" | 1 3/4" | SCWD | A | PT | - | 0" | HM | HM-1 | PT | H1 SIM | J1 SIM | - | - | 8.0 | ALTERNATE 4 | |
| 115/1 | 6'-0" | 7'-2" | 1 3/4" | ALUM | D | - | IG | 0" | ALUM | SF-2 | - | H3 | J3 | S2 | - | 6.0 | EXIT DEVICE | |
| 115/2 | 6'-0" | 7'-2" | 1 3/4" | HM | D | PT | FG | 0" | HM | HM-1 | PT | H1 | J1 | - | 90 MIN | 5.0 | EXIT DEVICE | |
| 121/1 | 6'-0" | 7'-2" | 1 3/4" | HM | D | PT | TEMP | 0" | HM | HM-1 | PT | H1 | J1 | S1 | - | 4.0 | | |
| 121/2 | 6'-0" | 7'-2" | 1 3/4" | ALUM | D | PT | IG | 0" | ALUM | SF-4 | PT | H2 | J2 | S2 | - | 6.0 | EXIT DEVICE | |
| 122/1 | 3'-0" | 7'-2" | 1 3/4" | HM | B | PT | FG | 0" | HM | HM-1 | PT | H1 | J1 | - | 45 MIN | 3.0 | | |
| 122A/1 | 3'-0" | 7'-2" | 1 3/4" | SCWD | A | PT | - | 0" | HM | HM-1 | PT | H1 | J1 | S1 | - | 2.0 | | |
| 122B/1 | 3'-0" | 7'-2" | 1 3/4" | SCWD | A | - | - | 0" | HM | HM-1 | PT | H1 | J1 | - | - | 4.0 | | |
| 123/1 | 3'-0" | 7'-2" | 1 3/4" | HM | B | PT | FG | 0" | HM | HM-1 | PT | H1 | J1 | - | 45 MIN | 3.0 | | |
| 123A/1 | 3'-0" | 7'-2" | 1 3/4" | SCWD | A | - | - | 0" | HM | HM-1 | PT | H1 | J1 | S1 | - | 2.0 | | |
| 123B/1 | 3'-0" | 7'-2" | 1 3/4" | SCWD | A | - | - | 0" | HM | HM-1 | PT | H1 | J1 | - | - | 1.0 | | |
| 124/1 | 3'-0" | 7'-2" | 1 3/4" | HM | B | PT | FG | 0" | HM | HM-1 | PT | H1 | J1 | - | 45 MIN | 3.0 | | |
| 124A/1 | 3'-0" | 7'-2" | 1 3/4" | SCWD | A | - | - | 0" | HM | HM-1 | PT | H1 | J1 | S1 | - | 2.0 | | |
| 124B/1 | 3'-0" | 7'-2" | 1 3/4" | SCWD | A | - | - | 0" | HM | HM-1 | PT | H1 | J1 | - | - | 1.0 | | |
| 125/1 | 3'-0" | 7'-2" | 1 3/4" | HM | B | PT | FG | 0" | HM | HM-1 | PT | H1 | J1 | - | 45 MIN | 3.0 | | |
| 125A/1 | 3'-0" | 7'-2" | 1 3/4" | SCWD | A | - | - | 0" | HM | HM-1 | PT | H1 | J1 | S1 | - | 2.0 | | |
| 125B/1 | 3'-0" | 7'-2" | 1 3/4" | SCWD | A | - | - | 0" | HM | HM-1 | PT | H1 | J1 | - | - | 1.0 | | |

