

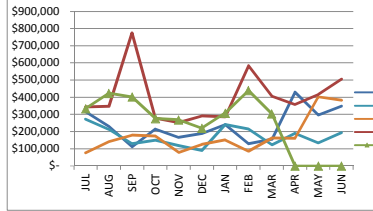
**026 Laboratory Supplies**  
**State Contract Spend Summary**

7/31/2017

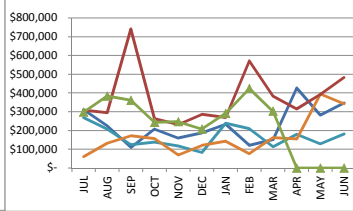
	Aggregate Total Contract Spend					Total Agency Contract Spend					Total School Contract Spend					Total Municipality Contract Spend				
	FY13	FY14	FY15	FY16	FY17	FY13	FY14	FY15	FY16	FY17	FY13	FY14	FY15	FY16	FY17	FY13	FY14	FY15	FY16	FY17
JUL	\$ 314,906	\$ 272,434	\$ 75,762	\$ 343,271	\$ 334,251	\$ 310,814	\$ 269,148	\$ 60,424	\$ 308,195	\$ 298,543	\$ -	\$ -	\$ 3,269	\$ 21,765	\$ 12,337	\$ 4,092	\$ 3,286	\$ 12,069	\$ 13,311	\$ 23,372
AUG	\$ 229,381	\$ 212,494	\$ 141,645	\$ 347,956	\$ 423,082	\$ 224,830	\$ 208,028	\$ 132,050	\$ 294,110	\$ 384,048	\$ -	\$ -	\$ 6,932	\$ 30,679	\$ 22,516	\$ 4,550	\$ 4,466	\$ 2,663	\$ 23,167	\$ 16,518
SEP	\$ 111,628	\$ 129,881	\$ 178,633	\$ 775,517	\$ 401,917	\$ 109,920	\$ 123,709	\$ 171,708	\$ 742,070	\$ 361,282	\$ -	\$ -	\$ 4,709	\$ 26,590	\$ 15,686	\$ 1,708	\$ 6,172	\$ 2,215	\$ 6,857	\$ 24,950
OCT	\$ 214,196	\$ 149,433	\$ 174,454	\$ 277,849	\$ 276,373	\$ 207,341	\$ 137,633	\$ 156,514	\$ 262,645	\$ 242,936	\$ -	\$ -	\$ 5,458	\$ 14,306	\$ 17,037	\$ 6,855	\$ 11,799	\$ 12,482	\$ 897	\$ 16,401
NOV	\$ 166,426	\$ 117,632	\$ 78,433	\$ 252,193	\$ 269,401	\$ 160,494	\$ 116,692	\$ 70,120	\$ 231,869	\$ 246,437	\$ -	\$ -	\$ 3,992	\$ 6,019	\$ 4,497	\$ 5,932	\$ 940	\$ 4,322	\$ 14,305	\$ 18,468
DEC	\$ 189,201	\$ 90,309	\$ 125,731	\$ 291,781	\$ 220,730	\$ 186,783	\$ 83,010	\$ 121,423	\$ 287,019	\$ 208,219	\$ -	\$ -	\$ 1,400	\$ 22	\$ 443	\$ 2,418	\$ 7,299	\$ 2,908	\$ 4,741	\$ 12,067
JAN	\$ 241,124	\$ 241,724	\$ 152,285	\$ 286,399	\$ 307,515	\$ 234,017	\$ 238,249	\$ 142,223	\$ 269,740	\$ 291,346	\$ -	\$ -	\$ 554	\$ (920)	\$ 3,655	\$ 7,107	\$ 3,476	\$ 9,507	\$ 17,579	\$ 12,514
FEB	\$ 128,993	\$ 215,311	\$ 85,769	\$ 583,644	\$ 440,448	\$ 121,260	\$ 209,407	\$ 77,128	\$ 572,119	\$ 423,543	\$ -	\$ -	\$ 1,793	\$ 1,418	\$ 4,604	\$ 7,733	\$ 5,903	\$ 6,848	\$ 10,107	\$ 12,301
MAR	\$ 155,863	\$ 124,233	\$ 162,300	\$ 406,997	\$ 303,605	\$ 151,601	\$ 113,397	\$ 162,253	\$ 383,912	\$ 302,547	\$ -	\$ 1,820	\$ 46	\$ 1,840	\$ 1,058	\$ 4,262	\$ 9,017	\$ -	\$ 21,245	\$ -
APR	\$ 429,503	\$ 191,202	\$ 160,477	\$ 358,668	\$ -	\$ 427,055	\$ 180,088	\$ 154,159	\$ 315,531	\$ -	\$ -	\$ 2,701	\$ 1,960	\$ 9,069	\$ -	\$ 2,449	\$ 8,413	\$ 4,358	\$ 34,067	\$ -
MAY	\$ 297,341	\$ 134,920	\$ 402,379	\$ 416,287	\$ -	\$ 282,870	\$ 129,040	\$ 395,941	\$ 392,999	\$ -	\$ -	\$ 1,542	\$ 3,663	\$ 7,451	\$ -	\$ 14,471	\$ 4,338	\$ 2,776	\$ 15,837	\$ -
JUN	\$ 349,222	\$ 194,388	\$ 382,017	\$ 506,549	\$ -	\$ 347,113	\$ 181,510	\$ 342,920	\$ 483,139	\$ -	\$ -	\$ 4,799	\$ 24,327	\$ 9,481	\$ -	\$ 2,109	\$ 8,078	\$ 14,770	\$ 13,929	\$ -
YTD Comparative Mo. Avg	\$ 235,649	\$ 172,830	\$ 176,657	\$ 403,926	\$ 330,814	\$ 230,342	\$ 165,826	\$ 165,572	\$ 378,612	\$ 229,908	\$ 0	\$ 2,715	\$ 4,842	\$ 10,643	\$ 9,092	\$ 5,307	\$ 6,099	\$ 6,243	\$ 14,670	\$ 11,382
YTD Comparative Total	\$ 2,827,784	\$ 2,073,960	\$ 2,119,884	\$ 4,847,111	\$ 2,977,322	\$ 2,764,098	\$ 1,989,911	\$ 1,986,861	\$ 4,543,348	\$ 2,758,900	\$ -	\$ 10,862	\$ 58,103	\$ 127,721	\$ 81,832	\$ 63,686	\$ 73,187	\$ 74,919	\$ 176,042	\$ 136,590
% Increase		-26.7%	2.2%	128.6%	-18.1%		-28.0%	-0.2%	128.7%	-39.3%		0.0%	78.3%	119.8%	-14.6%		14.9%	2.4%	135.0%	-22.4%
Overall Mo. Avg	\$ 235,649	\$ 172,830	\$ 176,657	\$ 403,926	\$ 248,110	\$ 230,342	\$ 165,826	\$ 165,572	\$ 378,612	\$ 229,908	\$ 0	\$ 905	\$ 4,842	\$ 10,643	\$ 6,819	\$ 5,307	\$ 6,099	\$ 6,243	\$ 14,670	\$ 11,382
Overall Year Total	\$ 2,827,784	\$ 2,073,960	\$ 2,119,884	\$ 4,847,111	\$ 2,977,322	\$ 2,764,098	\$ 1,989,911	\$ 1,986,861	\$ 4,543,348	\$ 2,758,900	\$ -	\$ 10,862	\$ 58,103	\$ 127,721	\$ 81,832	\$ 63,686	\$ 73,187	\$ 74,919	\$ 176,042	\$ 136,590
Overall % Increase		-26.7%	2.2%	128.6%	-38.6%		-28.0%	-0.2%	128.7%	-39.3%		0.0%	434.9%	119.8%	-35.9%		14.9%	2.4%	135.0%	-22.4%

(based on monthly average)

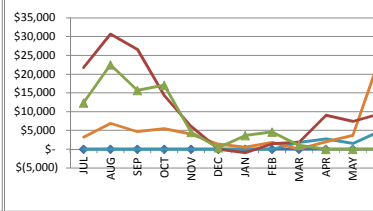
**026 LABORATORY SUPPLIES - Aggregate Total Contract Spend**



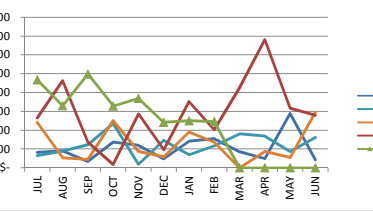
**026 LABORATORY SUPPLIES - Total Agency Spend**



**026 LABORATORY SUPPLIES - Total School Spend**



**026 LABORATORY SUPPLIES - Total Municipality/Non-Profit Spend**



# 26B Laboratory Supplies and Equipment State Contract Spend Summary

26B

7/31/2017

	Aggregate Total Contract Spend					Total Agency Contract Spend					Total School Contract Spend					Total Municipality Contract Spend						
	FY13	FY14	FY15	FY16	FY17	FY13	FY14	FY15	FY16	FY17	FY13	FY14	FY15	FY16	FY17	FY13	FY14	FY15	FY16	FY17		
JUL	\$	-	\$	-	\$	-	\$	-	\$	-	\$	-	\$	-	\$	-	\$	-	\$	-	\$	-
AUG	\$	-	\$	-	\$	-	\$	-	\$	-	\$	-	\$	-	\$	-	\$	-	\$	-	\$	-
SEP	\$	-	\$	-	\$	-	\$	-	\$	-	\$	-	\$	-	\$	-	\$	-	\$	-	\$	-
OCT	\$	-	\$	-	\$	-	\$	-	\$	-	\$	-	\$	-	\$	-	\$	-	\$	-	\$	-
NOV	\$	-	\$	-	\$	-	\$	-	\$	-	\$	-	\$	-	\$	-	\$	-	\$	-	\$	-
DEC	\$	-	\$	-	\$	-	\$	-	\$	-	\$	-	\$	-	\$	-	\$	-	\$	-	\$	-
JAN	\$	-	\$	-	\$	-	\$	-	\$	-	\$	-	\$	-	\$	-	\$	-	\$	-	\$	-
FEB	\$	-	\$	-	\$	-	\$	-	\$	-	\$	-	\$	-	\$	-	\$	-	\$	-	\$	25,438
MAR	\$	-	\$	-	\$	-	\$	-	\$	-	\$	-	\$	-	\$	-	\$	-	\$	-	\$	-
APR	\$	-	\$	-	\$	-	\$	-	\$	-	\$	-	\$	-	\$	-	\$	-	\$	-	\$	-
MAY	\$	-	\$	-	\$	-	\$	-	\$	-	\$	-	\$	-	\$	-	\$	-	\$	-	\$	-
JUN	\$	-	\$	-	\$	-	\$	-	\$	-	\$	-	\$	-	\$	-	\$	-	\$	-	\$	-
<b>YTD Comparative Mo. Avg</b>	<b>\$0</b>	<b>\$0</b>	<b>\$0</b>	<b>\$0</b>	<b>\$25,438</b>	<b>\$0</b>	<b>\$0</b>	<b>\$0</b>	<b>\$0</b>	<b>\$2,120</b>	<b>\$0</b>	<b>\$0</b>	<b>\$0</b>	<b>\$0</b>	<b>\$0</b>	<b>\$0</b>	<b>\$0</b>	<b>\$0</b>	<b>\$0</b>	<b>\$0</b>	<b>\$0</b>	<b>\$0</b>
<b>YTD Comparative Total</b>	<b>\$</b>	<b>-</b>	<b>\$</b>	<b>-</b>	<b>\$</b>	<b>-</b>	<b>\$</b>	<b>-</b>	<b>\$</b>	<b>-</b>	<b>\$</b>	<b>-</b>	<b>\$</b>	<b>-</b>	<b>\$</b>	<b>-</b>	<b>\$</b>	<b>-</b>	<b>\$</b>	<b>-</b>	<b>\$</b>	<b>25,438</b>
<b>% Increase</b>		0.0%	0.0%	0.0%	0.0%		0.0%	0.0%	0.0%	0.0%		0.0%	0.0%	0.0%	0.0%		0.0%	0.0%	0.0%	0.0%		0.0%
<b>Overall Mo. Avg</b>	<b>\$0</b>	<b>\$0</b>	<b>\$0</b>	<b>\$0</b>	<b>\$2,120</b>	<b>\$0</b>	<b>\$0</b>	<b>\$0</b>	<b>\$0</b>	<b>\$2,120</b>	<b>\$0</b>	<b>\$0</b>	<b>\$0</b>	<b>\$0</b>	<b>\$0</b>	<b>\$0</b>	<b>\$0</b>	<b>\$0</b>	<b>\$0</b>	<b>\$0</b>	<b>\$0</b>	<b>\$0</b>
<b>Overall Year Total</b>	<b>\$</b>	<b>-</b>	<b>\$</b>	<b>-</b>	<b>\$</b>	<b>-</b>	<b>\$</b>	<b>-</b>	<b>\$</b>	<b>-</b>	<b>\$</b>	<b>-</b>	<b>\$</b>	<b>-</b>	<b>\$</b>	<b>-</b>	<b>\$</b>	<b>-</b>	<b>\$</b>	<b>-</b>	<b>\$</b>	<b>25,438</b>
<b>Overall % Increase</b>		0.0%	0.0%	0.0%	0.0%		0.0%	0.0%	0.0%	0.0%		0.0%	0.0%	0.0%	0.0%		0.0%	0.0%	0.0%	0.0%		0.0%

(based on monthly average)

