

**TEVEBAUGH**  
ARCHITECTURE

Two Mill Road, Suite 210  
Wilmington, Delaware 19806  
(302) 984-1400  
FAX (302) 984-2957

333 N. SHIPLEY STREET  
2ND STREET & ORANGE STREET  
WILMINGTON, DE 19801

DELAWARE TECHNICAL COMMUNITY COLLEGE  
Orlando J. George Jr. Campus  
100 CAMPUS DRIVE  
DOVER, DE 19904-1383

302.239.6634

[illegible]3

## ISSUE

[illegible]

Date	02/23/2018
Scale	12" = 1'-0"
Drawn	NCF
Checked	SRG
Approved	SRG
Project	17001

Sheet **CS01**







2. Where aluminum is in contact with concrete or masonry, protect against corrosion by painting contact surfaces with bituminous paint.
- C. Set continuous sill members and flashing in full sealant bed as specified in Section 09200 "Joint Sealants" to produce weathertight installation.
- D. Install components plumb and true in alignment with established lines and grades.
- E. Install operable units level and plumb, securely anchored, and without distortion. Adjust weatherstripping contact and hardware movement to produce proper operation.
- F. Install glazing as specified in Section 08800 "Glazing."
- G. Install weatherseal glazing according to Section 07200 "Joint Sealants" and according to sealant manufacturer's written instructions to produce weathertight joints. Install joint filler behind sealant as recommended by sealant manufacturer.
- H. Entrance Doors: Install doors to produce smooth operation and tight fit at contact points.
1. Exterior Doors: Install to produce weathertight enclosure and tight fit at hardware stripping.
2. Field-Installed Entrance Door Hardware: Install surface-mounted entrance door hardware according to entrance door hardware manufacturers' written instructions using concealed fasteners to greatest extent possible.

- 3.4 ERECTION TOLERANCES
- A. Erection Tolerances: Install aluminum-framed entrances and storefronts to comply with the following maximum tolerances:
1. Plumb: 1/8 inch in 10 feet (3.2 mm in 3 m); 1/4 inch in 40 feet (6.35 mm in 12.2 m).
2. Level: 1/8 inch in 10 feet (3.2 mm in 3 m); 1/4 inch in 40 feet (6.35 mm in 12.2 m).
3. Alignment:
- a. Where surfaces abut in line or are separated by reveal or protruding element up to 1/2 inch (12.7 mm) wide, limit offset from true alignment to 1/16 inch (1.6 mm).
- b. Where surfaces are separated by reveal or protruding element from 1/2 to 1 inch (12.7 to 25.4 mm) wide, limit offset from true alignment to 1/8 inch (3.2 mm).
- c. Where surfaces are separated by a projecting element of 1 inch (25.4 mm) wide or more, limit offset from true alignment to 1/4 inch (6.3 mm).
4. Location: Limit variation from plane to 1/8 inch in 12 feet (3.2 mm in 3.6 m); 1/2 inch (12.7 mm) over total length.

- 3.5 FIELD QUALITY CONTROL
- A. Field Quality-Control Testing: Perform the following test on representative areas of aluminum-framed entrances and storefronts.
1. Water-Spray Test: Before installation of interior finishes have areas, designed by Architect, shall be tested according to AAMA 501.2 and shall not evidence water penetration.
- a. Perform a minimum of two tests in areas as directed by Architect.

- B. Structural Sealant Adhesion: Test structural sealant adhesion to recommendations in ASTM C 1401, Destructive Test Method A, "Hand Pull Tab (Destructive)," Appendix X2.
1. Test a minimum of two areas on each building facade.
2. Repair installation areas damaged by testing.
- C. Aluminum-framed entrances and storefronts will be considered defective if they do not pass tests and inspections.
- D. Prepare test and inspection reports.

- 3.6 MAINTENANCE SERVICE
- A. Entrance Door Hardware:
1. Maintenance Tools and Instructions: Furnish a complete set of specialized tools and maintenance instructions as needed for Owner's continued adjustment, maintenance, and removal and replacement of entrance door hardware.

- 3.7 ENTRANCE DOOR HARDWARE SETS (See Door Hardware Schedule)

- END OF SECTION 08413

- SECTION 08800 - GLAZING

- PART 1 - GENERAL

- 1.1 RELATED DOCUMENTS
- A. Drawings and general provisions of the Contract, including General and Supplementary Conditions and Division 1 Specification Sections, apply to this Section.

- 1.2 SUMMARY
- A. Section includes:
1. Glass for doors and storefront framing.
2. Glazing sealants and accessories.
- B. Related Requirements:
1. Section 08413 "Aluminum-Framed Entrances and Storefronts."

- 1.3 DEFINITIONS
- A. Glass Manufacturers: Firms that produce primary glass, fabricated glass, or both, as defined in referenced glazing publications.
- B. Glass Thicknesses: Indicated by thickness designations in millimeters according to ASTM C 106.
- C. IBC: International Building Code (2015).
- D. Interspace: Space between lites of an insulating-glass unit.

- 1.4 COORDINATION
- A. Coordinate glazing channel dimensions to provide necessary bite on glass, minimum edge and face clearances, and adequate sealant thicknesses, with reasonable tolerances.

- 1.5 PREINSTALLATION MEETINGS
- A. Preinstallation Conference: Not required.

- 1.6 ACTION SUBMITTALS
- A. Product Data: For each type of product.
- B. Glass Samples: For each type of the following products; 12 inches square.
1. Insulating glass.
- C. Glazing Accessory Samples: For sealants, in 12-inch lengths.
- D. Glazing Schedule:
1. ~~See Section 08413 "Aluminum-Framed Entrances and Storefronts" for Glazing Schedule.~~
2. ~~See Section 08413 "Aluminum-Framed Entrances and Storefronts" for Glazing Schedule.~~
- E. Delegated Design Submittal: For glass indicated to comply with performance requirements and design criteria, including analysis data signed and sealed by the qualified professional engineer responsible for their preparation.

- 1.7 INFORMATIONAL SUBMITTALS
- A. Qualification Data: For Installer.
- B. Product Certificates: For glass.
- C. Product Test Reports: For insulating glass and glazing sealants, for tests performed by a qualified testing agency.
1. For glazing sealants, provide test reports based on testing current sealant formulations within previous 36-month period.
- D. Preconstruction adhesion and compatibility test reports.
- E. Sample Warranties: For special warranties.

- 1.8 QUALITY ASSURANCE
- A. Installer Qualifications: A qualified installer who employs glass installers for this Project who are certified under the National Glass Association's Certified Glass Installer Program.
- B. Glass Testing Agency Qualifications: A qualified independent testing agency accredited according to the NIBIC LAP 1 Certification Agency Program.
- C. Sealant Testing Agency Qualifications: An independent testing agency qualified according to ASTM C 1021 to conduct the testing indicated.
- D. Mockups: No mockup required.

- 1.9 DELIVERY, STORAGE, AND HANDLING
- A. Protect glazing materials according to manufacturer's written instructions. Prevent damage to glass and glazing materials from condensation, temperature changes, direct exposure to sun, or other causes.

- 1.10 FIELD CONDITIONS
- A. Environmental Limitations: Do not proceed with glazing when ambient and substrate temperature conditions are outside limits permitted by glazing materials manufacturers and when glazing channel substrates are wet from rain, frost, condensation, or other causes.
1. Do not install glazing sealants when ambient and substrate temperature conditions are outside limits permitted by sealant manufacturer or are below 40 deg F.

- 1.11 WARRANTY
- A. Manufacturer's Special Warranty for Insulating Glass: Manufacturer agrees to replace insulating glass units that deteriorate within specified warranty period. Deterioration of insulating glass is defined as failure of hermetic seal under normal use that is not attributed to glass breakage or to maintaining and cleaning insulating glass contrary to manufacturer's written instructions. Evidence of failure is the obstruction of vision by dust, moisture, or film on interior surfaces of glass.
1. Warranty Period: 10 years from date of Substantial Completion.

- PART 2 - PRODUCTS

- 2.1 MANUFACTURERS
- A. Basis-of-Design Product: Subject to compliance with requirements, provide Guardian Industries Corp., San-Gard Advanced Architectural Glass provided by the following:
1. Garibaldi Glass Industries, Inc.
2. Glasworks LA, Inc.
3. Harney Glass Industries, Inc.
4. Insulated Glass of America, Inc.
5. JE Berkovitz, LP
6. Minko Window Systems, Inc.
7. Mulvihill Ltd.
8. Northwestern Industries, Inc.
9. Okawake BuildingEnvelope
10. PGL Glass Systems, Inc.
11. Real Bad Glass, Inc.
12. SAAND Inc.
13. SHOCO, Inc.
14. Solar Seal Company

- 2.2 FABRICATION
- A. General: Installed glazing units shall withstand normal thermal movement and wind and impact loads (where applicable) without failure, including loss of glass breakage attributable to the following: defective manufacturer, fabrication, or installation; failure of sealants or gaskets to maintain watertight and airtight; deterioration of glazing materials; or other defects in construction.
- B. Delegated Design: Engage a qualified professional engineer, as defined in Section 01400 "Quality Requirements," to design glazing.
- C. Structural Performance: Glazing shall withstand the following design loads within limits and under conditions indicated determined according to the IRC and ASTM E 1300.
1. Design Wind Pressure: As indicated on Drawings.
2. Design Wind Pressure: Determine design wind pressures applicable to Project according to ASCE/SEI 7, based on pressures above grade indicated on Drawings.
- a. Wind Design Data: As indicated on Drawings.
- b. Basic Wind Speed: 110 mph (17 m/s).
- c. Importance Factor: 1.0.
- d. Exposure Category: B.
3. Maximum Lateral Deflection: For glass supported on all four edges, limit center-of-glass deflection of design wind pressure to not more than 1/50 times the short-side length or 1 inch (25 mm), whichever is less.
4. Safety Glazing: Where safety glazing is indicated, provide glazing that complies with 16 CFR 1201, Category II.
- E. Thermal and Optical Performance Properties: Provide glass with performance properties specified, as indicated in manufacturer's published test data, based on procedures indicated below:
1. For insulating glass units, properties are based on units of thickness indicated for overall unit and for each lite.
2. U-Factor: Center-of-glazing values, according to NFRC 100-2010 and based on UINI's WINDOW 6.3 program, expressed as Btu/h ft<sup>2</sup> x h x deg F (W/m<sup>2</sup> x m x K).
3. Solar Heat-Gain Coefficient and Visible Transmittance: Center-of-glazing values, according to NFRC 200-2010 and based on UINI's WINDOW 6.3 program.
4. Solar Reflectance: Center-of-glazing values, according to NFRC 300-2010.

- 2.3 GLAZING PRODUCTS, GENERAL
- A. Glazing Publications: Comply with published recommendations of glass product manufacturers and organizations below unless more stringent requirements are indicated. See these publications for glazing terms not otherwise defined in this Section or in referenced standards.
1. IGMA Publication for Insulating Glass: SIGMA TM-2000, "North American Glazing Guidelines for Sealed Insulating Glass Units for Commercial and Residential Use."
- B. Safety Glazing Labeling: Where safety glazing is indicated, permanently mark glazing with certification label of the SGCC, the SGCC or other certification agency acceptable to authority having jurisdiction. Label shall indicate manufacturer's name, type of glass, thickness, and safety glazing standard with which glass complies.
- C. Insulating-Glass Certification Program: Permanently mark either on spacers or on at least one component of the unit with appropriate certification label of IGCC.
- D. Thickness: Where glass thickness is indicated, it is a minimum. Provide glass that complies with performance requirements and is not less than the thickness indicated.
- E. Strength: Where fully tempered float glass is indicated, provide fully tempered float glass.

- 2.4 GLASS PRODUCTS
- A. Clear Annealed Float Glass: ASTM C 106, Type I, Class I (clear), Quality-Q3.
- B. Fully Tempered Float Glass: ASTM C 1048, Kind FT (fully tempered), Condition A (annealed) unless otherwise indicated, Type I, Class I (clear) or Class 2 (tinted) as indicated, Quality-Q3.
1. Fabrication Process: By horizontal (roll-batch) process with low-stress annealing parallel to bottom edge of glass as installed unless otherwise indicated.
- C. Heat-Strengthened Float Glass: ASTM C 1048, Kind HS (heat strengthened), Type I, Condition A (annealed) unless otherwise indicated, Type I, Class I (clear) or Class 2 (tinted) as indicated, Quality-Q3.
- D. Low-E Coated Float Glass: ASTM C 1376, coated by vacuum deposition (sputter-coating) process, and complying with other requirements specified.

- 2.5 INSULATING GLASS
- A. Insulating-Glass Units: Factory-assembled units consisting of sealed lites of glass separated by a cylindrical neoprene, qualified according to ASTM E 2190.

- 2.6 GLAZING SEALANTS
- A. General:
1. Compatibility: Compatible with one another and with other materials they contact, including glass products, seals of insulating glass units, and glazing channel substrates, under conditions of service and application, as demonstrated by sealant manufacturers based on testing and field experience.
2. Suitability: Comply with sealant and glass manufacturers' written instructions for selecting glazing sealants suitable for applications indicated and for conditions existing at time of installation.
- B. Glazing Sealant: Neutral curing elastomeric glazing sealant complying with ASTM C920, Type S, Grade NS, Class 100/50, Use NT.
1. Manufacturers: Subject to compliance with requirements, provide products by one of the following:
- a. Dow Corning Corporation.
- b. GE Construction Sealants, Momentive Performance Materials Inc.
- c. May National Associates, Inc.; a subsidiary of Silca Corporation.
- d. Peacor Corporation.
- e. Silca Corporation.
- f. Tremco Incorporated.

- 2.7 GLAZING TAPES
- A. Back-Bedding Mastic Glazing Tapes: Preformed, butyl-based, 100 percent solids elastomeric tape, nonstaining and nonexuding in contact with nonporous surfaces; with or without spacer rod as recommended in writing by tape and glass manufacturers for application; indicated; and complying with ASTM C 128 and AAMA 980 for products indicated below.
1. AAMA 896.3 tape, for glazing applications in which tape is subject to continuous pressure.

- 2.8 MISCELLANEOUS GLAZING MATERIALS
- A. General: Provide products of material, size, and shape complying with referenced glazing standard, with requirements of manufacturers of glass and other glazing materials for application, indicated, and with a proven record of compatibility with surfaces contacted in installation.
- B. Cleaners, Primers, and Sealers: Types recommended by sealant or glass manufacturer.
- C. Setting Blocks: Elastomeric material with a Shore, Type A durometer hardness of 85, plus or minus 5.
- D. Spacers: Elastomeric blocks or continuous extrusions of hardness required by glass manufacturers to maintain glass lites in place for installation indicated.
- E. Edge Blocks: Elastomeric material of hardness needed to limit glass lateral movement (side walking).
- F. Cylindrical Glazing Sealing Blocks: ASTM C 1330, Type O (open-cell foam), of size and density to control glazing backing and otherwise provide optimum glazing seal performance.

- 2.9 FABRICATION OF GLAZING UNITS
- A. Fabricate glazing units in sizes required to fit openings indicated for Project, with edge and face clearances, edge and surface conditions, and lites complying with written instructions of product manufacturer and referenced glazing publications, to comply with system performance requirements.
1. Allow for thermal movements from ambient and surface temperature changes acting on glass framing members and glazing components.
- a. Temperature Change: 120 deg F (67 deg C), ambient, 180 deg F (100 deg C), differential.

- PART 3 - EXECUTION

- 3.1 EXAMINATION
- A. Examine framing, glazing channels, and stops, with Installer present, for compliance with the following:
1. Manufacturing and installation tolerances, including those for sizes, squareness, and offsets at corners.
2. Presence and functioning of weep systems.
3. Minimum required face and edge clearances.
4. Effective sealing between joints of glass-framing members.
- B. Proceed with installation only after unsatisfactory conditions have been corrected.

- 3.2 PREPARATION
- A. Clean glazing channels and other framing members receiving glass immediately before glazing. Remove coatings not firmly bonded to substrate.
- B. Examine glazing units for face condition and interior surfaces. Label or mark units as needed so exterior and interior surfaces are readily identifiable. Do not use materials that leave visible marks in the completed work.

- PART 4 - FINISHES

- 4.1 QUALITY ASSURANCE
- A. Preparation and Workmanship: Comply with requirements in "MPI Architectural Priming Specification Manual" for primers and paint system indicated.
- B. Mockups: Apply benchmark samples of each paint system indicated and each color and finish selected to verify preliminary selections made under sample submittals and to demonstrate aesthetic effects and set quality standards for materials and execution.
1. Architect will select one representative surface and conditions for application of each paint system specified in Part 3.
- a. Vertical and Horizontal Surfaces: Provide samples of at least 100 sq ft (9 sq m).
- b. Other Items: Architect will designate items or areas required.
2. Final approval of color selections will be based on benchmark samples.
- a. If preliminary color selections are not approved, apply additional benchmark samples of additional colors selected by Architect or at added cost to Owner.

- 4.2 PAINT SYSTEMS
- A. Paint System: Comply with requirements in "MPI Architectural Priming Specification Manual" for primers and paint system indicated.
- B. Mockups: Apply benchmark samples of each paint system indicated and each color and finish selected to verify preliminary selections made under sample submittals and to demonstrate aesthetic effects and set quality standards for materials and execution.
1. Architect will select one representative surface and conditions for application of each paint system specified in Part 3.
- a. Vertical and Horizontal Surfaces: Provide samples of at least 100 sq ft (9 sq m).
- b. Other Items: Architect will designate items or areas required.
2. Final approval of color selections will be based on benchmark samples.
- a. If preliminary color selections are not approved, apply additional benchmark samples of additional colors selected by Architect or at added cost to Owner.

- 4.3 PAINT APPLICATION
- A. Paint Application: Comply with requirements in "MPI Architectural Priming Specification Manual" for primers and paint system indicated.
- B. Mockups: Apply benchmark samples of each paint system indicated and each color and finish selected to verify preliminary selections made under sample submittals and to demonstrate aesthetic effects and set quality standards for materials and execution.
1. Architect will select one representative surface and conditions for application of each paint system specified in Part 3.
- a. Vertical and Horizontal Surfaces: Provide samples of at least 100 sq ft (9 sq m).
- b. Other Items: Architect will designate items or areas required.
2. Final approval of color selections will be based on benchmark samples.
- a. If preliminary color selections are not approved, apply additional benchmark samples of additional colors selected by Architect or at added cost to Owner.

- 4.4 PAINT FINISHES
- A. Paint Finish: Comply with requirements in "MPI Architectural Priming Specification Manual" for primers and paint system indicated.
- B. Mockups: Apply benchmark samples of each paint system indicated and each color and finish selected to verify preliminary selections made under sample submittals and to demonstrate aesthetic effects and set quality standards for materials and execution.
1. Architect will select one representative surface and conditions for application of each paint system specified in Part 3.
- a. Vertical and Horizontal Surfaces: Provide samples of at least 100 sq ft (9 sq m).
- b. Other Items: Architect will designate items or areas required.
2. Final approval of color selections will be based on benchmark samples.
- a. If preliminary color selections are not approved, apply additional benchmark samples of additional colors selected by Architect or at added cost to Owner.

- 4.5 PAINT COATINGS
- A. Paint Coatings: Comply with requirements in "MPI Architectural Priming Specification Manual" for primers and paint system indicated.
- B. Mockups: Apply benchmark samples of each paint system indicated and each color and finish selected to verify preliminary selections made under sample submittals and to demonstrate aesthetic effects and set quality standards for materials and execution.
1. Architect will select one representative surface and conditions for application of each paint system specified in Part 3.
- a. Vertical and Horizontal Surfaces: Provide samples of at least 100 sq ft (9 sq m).
- b. Other Items: Architect will designate items or areas required.
2. Final approval of color selections will be based on benchmark samples.
- a. If preliminary color selections are not approved, apply additional benchmark samples of additional colors selected by Architect or at added cost to Owner.

- 4.6 PAINT COATINGS
- A. Paint Coatings: Comply with requirements in "MPI Architectural Priming Specification Manual" for primers and paint system indicated.
- B. Mockups: Apply benchmark samples of each paint system indicated and each color and finish selected to verify preliminary selections made under sample submittals and to demonstrate aesthetic effects and set quality standards for materials and execution.
1. Architect will select one representative surface and conditions for application of each paint system specified in Part 3.
- a. Vertical and Horizontal Surfaces: Provide samples of at least 100 sq ft (9 sq m).
- b. Other Items: Architect will designate items or areas required.
2. Final approval of color selections will be based on benchmark samples.
- a. If preliminary color selections are not approved, apply additional benchmark samples of additional colors selected by Architect or at added cost to Owner.

- 4.7 PAINT COATINGS
- A. Paint Coatings: Comply with requirements in "MPI Architectural Priming Specification Manual" for primers and paint system indicated.
- B. Mockups: Apply benchmark samples of each paint system indicated and each color and finish selected to verify preliminary selections made under sample submittals and to demonstrate aesthetic effects and set quality standards for materials and execution.
1. Architect will select one representative surface and conditions for application of each paint system specified in Part 3.
- a. Vertical and Horizontal Surfaces: Provide samples of at least 100 sq ft (9 sq m).
- b. Other Items: Architect will designate items or areas required.
2. Final approval of color selections will be based on benchmark samples.
- a. If preliminary color selections are not approved, apply additional benchmark samples of additional colors selected by Architect or at added cost to Owner.

- 4.8 PAINT COATINGS
- A. Paint Coatings: Comply with requirements in "MPI Architectural Priming Specification Manual" for primers and paint system indicated.
- B. Mockups: Apply benchmark samples of each paint system indicated and each color and finish selected to verify preliminary selections made under sample submittals and to demonstrate aesthetic effects and set quality standards for materials and execution.
1. Architect will select one representative surface and conditions for application of each paint system specified in Part 3.
- a. Vertical and Horizontal Surfaces: Provide samples of at least 100 sq ft (9 sq m).
- b. Other Items: Architect will designate items or areas required.
2. Final approval of color selections will be based on benchmark samples.
- a. If preliminary color selections are not approved, apply additional benchmark samples of additional colors selected by Architect or at added cost to Owner.

- 4.9 PAINT COATINGS
- A. Paint Coatings: Comply with requirements in "MPI Architectural Priming Specification Manual" for primers and paint system indicated.
- B. Mockups: Apply benchmark samples of each paint system indicated and each color and finish selected to verify preliminary selections made under sample submittals and to demonstrate aesthetic effects and set quality standards for materials and execution.
1. Architect will select one representative surface and conditions for application of each paint system specified in Part 3.
- a. Vertical and Horizontal Surfaces: Provide samples of at least 100 sq ft (9 sq m).
- b. Other Items: Architect will designate items or areas required.
2. Final approval of color selections will be based on benchmark samples.
- a. If preliminary color selections are not approved, apply additional benchmark samples of additional colors selected by Architect or at added cost to Owner.

- 4.10 PAINT COATINGS
- A. Paint Coatings: Comply with requirements in "MPI Architectural Priming Specification Manual" for primers and paint system indicated.
- B. Mockups: Apply benchmark samples of each paint system indicated and each color and finish selected to verify preliminary selections made under sample submittals and to demonstrate aesthetic effects and set quality standards for materials and execution.
1. Architect will select one representative surface and conditions for application of each paint system specified in Part 3.
- a. Vertical and Horizontal Surfaces: Provide samples of at least 100 sq ft (9 sq m).
- b. Other Items: Architect will designate items or areas required.
2. Final approval of color selections will be based on benchmark samples.
- a. If preliminary color selections are not approved, apply additional benchmark samples of additional colors selected by Architect or at added cost to Owner.

- 4.11 PAINT COATINGS
- A. Paint Coatings: Comply with requirements in "MPI Architectural Priming Specification Manual" for primers and paint system indicated.
- B. Mockups: Apply benchmark samples of each paint system indicated and each color and finish selected to verify preliminary selections made under sample submittals and to demonstrate aesthetic effects and set quality standards for materials and execution.
1. Architect will select one representative surface and conditions for application of each paint system specified in Part 3.
- a. Vertical and Horizontal Surfaces: Provide samples of at least 100 sq ft (9 sq m).
- b. Other Items: Architect will designate items or areas required.
2. Final approval of color selections will be based on benchmark samples.
- a. If preliminary color selections are not approved, apply additional benchmark samples of additional colors selected by Architect or at added cost to Owner.

- 4.12 PAINT COATINGS
- A. Paint Coatings: Comply with requirements in "MPI Architectural Priming Specification Manual" for primers and paint system indicated.
- B. Mockups: Apply benchmark samples of each paint system indicated and each color and finish selected to verify preliminary selections made under sample submittals and to demonstrate aesthetic effects and set quality standards for materials and execution.
1. Architect will select one representative surface and conditions for application of each paint system specified in Part 3.
- a. Vertical and Horizontal Surfaces: Provide samples of at least 100 sq ft (9 sq m).
- b. Other Items: Architect will designate items or areas required.
2. Final approval of color selections will be based on benchmark samples.
- a. If preliminary color selections are not approved, apply additional benchmark samples of additional colors selected by Architect or at added cost to Owner.

- 4.13 PAINT COATINGS
- A. Paint Coatings: Comply with requirements in "MPI Architectural Priming Specification Manual" for primers and paint system indicated.
- B. Mockups: Apply benchmark samples of each paint system indicated and each color and finish selected to verify preliminary selections made under sample submittals and to demonstrate aesthetic effects and set quality standards for materials and execution.
1. Architect will select one representative surface and conditions for application of each paint system specified in Part 3.
- a. Vertical and Horizontal Surfaces: Provide samples of at least 100 sq ft (9 sq m).
- b. Other Items: Architect will designate items or areas required.
2. Final approval of color selections will be based on benchmark samples.
- a. If preliminary color selections are not approved, apply additional benchmark samples of additional colors selected by Architect or at added cost to Owner.

- 4.14 PAINT COATINGS
- A. Paint Coatings: Comply with requirements in "MPI Architectural Priming Specification Manual" for primers and paint system indicated.
- B. Mockups: Apply benchmark samples of each paint system indicated and each color and finish selected to verify preliminary selections made under sample submittals and to demonstrate aesthetic effects and set quality standards for materials and execution.
1. Architect will select one representative surface and conditions for application of each paint system specified in Part 3.
- a. Vertical and Horizontal Surfaces: Provide samples of at least 100 sq ft (9 sq m).
- b. Other Items: Architect will designate items or areas required.
2. Final approval of color selections will be based on benchmark samples.
- a. If preliminary color selections are not approved, apply additional benchmark samples of additional colors selected by Architect or at added cost to Owner.

- 4.15 PAINT COATINGS
- A. Paint Coatings: Comply with requirements in "MPI Architectural Priming Specification Manual" for primers and paint system indicated.
- B. Mockups: Apply benchmark samples of each paint system indicated and each color and finish selected to verify preliminary selections made under sample submittals and to demonstrate aesthetic effects and set quality standards for materials and execution.
1. Architect will select one representative surface and conditions for application of each paint system specified in Part 3.
- a. Vertical and Horizontal Surfaces: Provide samples of at least 100 sq ft (9 sq m).
- b. Other Items: Architect will designate items or areas required.
2. Final approval of color selections will be based on benchmark samples.
- a. If preliminary color selections are not approved, apply additional benchmark samples of additional colors selected by Architect or at added cost to Owner.

- 4.16 PAINT COATINGS
- A. Paint Coatings: Comply with requirements in "MPI Architectural Priming Specification Manual" for primers and paint system indicated.
- B. Mockups: Apply benchmark samples of each paint system indicated and each color and finish selected to verify preliminary selections made under sample submittals and to demonstrate aesthetic effects and set quality standards for materials and execution.
1. Architect will select one representative surface and conditions for application of each paint system specified in Part 3.
- a. Vertical and Horizontal Surfaces: Provide samples of at least 100 sq ft (9 sq m).
- b. Other Items: Architect will designate items or areas required.
2. Final approval of color selections will be based on benchmark samples.
- a. If preliminary color selections are not approved, apply additional benchmark samples of additional colors selected by Architect or at added cost to Owner.

- 4.17 PAINT COATINGS
- A. Paint Coatings: Comply with requirements in "MPI Architectural Priming Specification Manual" for primers and paint system indicated.
- B. Mockups: Apply benchmark samples of each paint system indicated and each color and finish selected to verify preliminary selections made under sample submittals and to demonstrate aesthetic effects and set quality standards for materials and execution.
1. Architect will select one representative surface and conditions for application of each paint system specified in Part 3.
- a. Vertical and Horizontal Surfaces: Provide samples of at least 100 sq ft (9 sq m).
- b. Other Items: Architect will designate items or areas required.
2. Final approval of color selections will be based on benchmark samples.
- a. If preliminary color selections are not approved, apply additional benchmark samples of additional colors selected by Architect or at added cost to Owner.

- 4.18 PAINT COATINGS
- A. Paint Coatings: Comply with requirements in "MPI Architectural Priming Specification Manual" for primers and paint system indicated.
- B. Mockups: Apply benchmark samples of each paint system indicated and each color and finish selected to verify preliminary selections made under sample submittals and to demonstrate aesthetic effects and set quality standards for materials and execution.
1. Architect will select one representative surface and conditions for application of each paint system specified in Part 3.
- a. Vertical and Horizontal Surfaces: Provide samples of at least 100 sq ft (9 sq m).
- b. Other Items: Architect will designate items or areas required.
2. Final approval of color selections will be based on benchmark samples.
- a. If preliminary color selections are not approved, apply additional benchmark samples of additional colors selected by Architect or at added cost to Owner.

- 4.19 PAINT COATINGS
- A. Paint Coatings: Comply with requirements in "MPI Architectural Priming Specification Manual" for primers and paint system indicated.
- B. Mockups: Apply benchmark samples of each paint system indicated and each color and finish selected to verify preliminary selections made under sample submittals and to demonstrate aesthetic effects and set quality standards for materials and execution.
1. Architect will select one representative surface and conditions for application of each paint system specified in Part 3.
- a. Vertical and Horizontal Surfaces: Provide samples of at least 100 sq ft (9 sq m).
- b. Other Items: Architect will designate items or areas required.
2. Final approval of color selections will be based on benchmark samples.
- a. If preliminary color selections are not approved, apply additional benchmark samples of additional colors selected by Architect or at added cost to Owner.

- 4.20 PAINT COATINGS
- A. Paint Coatings: Comply with requirements in "MPI Architectural Priming Specification Manual" for primers and paint system indicated.
- B. Mockups: Apply benchmark samples of each paint system indicated and each color and finish selected to verify preliminary selections made under sample submittals and to demonstrate aesthetic effects and set quality standards for materials and execution.
1. Architect will select one representative surface and conditions for application of each paint system specified in Part 3.
- a. Vertical and Horizontal Surfaces: Provide samples of at least 100 sq ft (9 sq m).
- b. Other Items: Architect will designate items or areas required.
2. Final approval of color selections will be based on benchmark samples.
- a. If preliminary color selections are not approved, apply additional benchmark samples of additional colors selected by Architect or at added cost to Owner.

- 4.21 PAINT COATINGS
- A. Paint Coatings: Comply with requirements in "MPI Architectural Priming Specification Manual" for primers and paint system indicated.
- B. Mockups: Apply benchmark samples of each paint system indicated and each color and finish selected to verify preliminary selections made under sample submittals and to demonstrate aesthetic effects and set quality standards for materials and execution.
1. Architect will select one representative surface and conditions for application of each paint system specified in Part 3.
- a. Vertical and Horizontal Surfaces: Provide samples of at least 100 sq ft (9 sq m).
- b. Other Items: Architect will designate items or areas required.
2. Final approval of color selections will be based on benchmark samples.
- a. If preliminary color selections are not approved, apply additional benchmark samples of additional colors selected by Architect or at added cost to Owner.

- 4.22 PAINT COATINGS
- A. Paint Coatings: Comply with requirements in "MPI Architectural Priming Specification Manual" for primers and paint system indicated.
- B. Mockups: Apply benchmark samples of each paint system indicated and each color and finish selected to verify preliminary selections made under sample submittals and to demonstrate aesthetic effects and set quality standards for materials and execution.
1. Architect will select one representative surface and conditions for application of each paint system specified in Part 3.
- a. Vertical and Horizontal Surfaces: Provide samples of at least 100 sq ft (9 sq m).
- b. Other Items: Architect will designate items or areas required.
2. Final approval of color selections will be based on benchmark samples.
- a. If preliminary color selections are not approved, apply additional benchmark samples of additional colors selected by Architect or at added cost to Owner.

- 4.23 PAINT COATINGS
- A. Paint Coatings: Comply with requirements in "MPI Architectural Priming Specification Manual" for primers and paint system indicated.
- B. Mockups: Apply benchmark samples of each paint system indicated and each color and finish selected to verify preliminary selections made under sample submittals and to demonstrate aesthetic effects and set quality standards for materials and execution.
1. Architect will select one representative surface and conditions for application of each paint system specified in Part 3.
- a. Vertical and Horizontal Surfaces: Provide samples of at least 100 sq ft (9 sq m).
- b. Other Items: Architect will designate items or areas required.
2. Final approval of color selections will be based on benchmark samples.
- a. If preliminary color selections are not approved, apply additional benchmark samples of additional colors selected by Architect or at added cost to Owner.

- 4.24 PAINT COATINGS
- A. Paint Coatings: Comply with requirements in "MPI Architectural Priming Specification Manual" for primers and paint system indicated.
- B. Mockups: Apply benchmark samples of each paint system indicated and each color and finish selected to verify preliminary selections made under sample submittals and to demonstrate aesthetic effects and set quality standards for materials and execution.
1. Architect will select one representative surface and conditions for application of each paint system specified in Part 3.
- a. Vertical and Horizontal Surfaces: Provide samples of at least 100 sq ft (9 sq m).
- b. Other Items: Architect will designate items or areas required.
2. Final approval of color selections will be based on benchmark samples.
- a. If preliminary color selections are not approved, apply additional benchmark samples of additional colors selected by Architect or at added cost to Owner.

- 4.25 PAINT COATINGS
- A. Paint Coatings: Comply with requirements in "MPI Architectural Priming Specification Manual" for primers and paint system indicated.
- B. Mockups: Apply benchmark samples of each paint system indicated and each color and finish selected to verify preliminary selections made under sample submittals and to demonstrate aesthetic effects and set quality standards for materials and execution.
1. Architect will select one representative surface and conditions for application of each paint system specified in Part 3.
- a. Vertical and Horizontal Surfaces: Provide samples of at least 100 sq ft (9 sq m).
- b. Other Items: Architect will designate items or areas required.
2. Final approval of color selections will be based on benchmark samples.
- a. If preliminary color selections are not approved, apply additional benchmark samples of additional colors selected by Architect or at added cost to Owner.

- 4.26 PAINT COATINGS
- A. Paint Coatings: Comply with requirements in "MPI Architectural Priming Specification Manual" for primers and paint system indicated.
- B. Mockups: Apply benchmark samples of each paint system indicated and each color and finish selected to verify preliminary selections made under sample submittals and to demonstrate aesthetic effects and set quality standards for materials and execution.
1. Architect will select one representative surface and conditions for application of each paint system specified in Part 3.
- a. Vertical and Horizontal Surfaces: Provide samples of at least 100 sq ft (9 sq m).
- b. Other Items: Architect will designate items or areas required.
2. Final approval of color selections will be based on benchmark samples.
- a. If preliminary color selections are not approved, apply additional benchmark samples of additional colors selected by Architect or at added cost to Owner.

- 4.27 PAINT COATINGS
- A. Paint Coatings: Comply with requirements in "MPI Architectural Priming Specification Manual" for primers and paint system indicated.
- B. Mockups: Apply benchmark samples of each paint system indicated and each color and finish selected to verify preliminary selections made under sample submittals and to demonstrate aesthetic effects and set quality standards for materials and execution.
1. Architect will select one representative surface and conditions for application of each paint system specified in Part 3.
- a. Vertical and Horizontal Surfaces: Provide samples of at least 100 sq ft (9 sq m).
- b. Other Items: Architect will designate items or areas required.
2. Final approval of color selections will be based on benchmark samples.
- a. If preliminary color selections are not approved, apply additional benchmark samples of additional colors selected by Architect or at added cost to Owner.

- 4.28 PAINT COATINGS
- A. Paint Coatings: Comply with requirements in "MPI Architectural Priming Specification Manual" for primers and paint system indicated.
- B. Mockups: Apply benchmark samples of each paint system indicated and each color and finish selected to verify preliminary selections made under sample submittals and to demonstrate aesthetic effects and set quality standards for materials and execution.
1. Architect will select one representative surface and conditions for application of each paint system specified in Part 3.
- a. Vertical and Horizontal Surfaces: Provide samples of at least 100 sq ft (9 sq m).
- b. Other Items: Architect will designate items or areas required.
2. Final approval of color selections will be based on benchmark samples.
- a. If preliminary color selections are not approved, apply additional benchmark samples of additional colors selected by Architect or at added cost to Owner.

- 4.29 PAINT COATINGS
- A. Paint Coatings: Comply with requirements in "MPI Architectural Priming Specification Manual" for primers and paint system indicated.
- B. Mockups: Apply benchmark samples of each paint system indicated and each color and finish selected to verify preliminary selections made under sample submittals and to demonstrate aesthetic effects and set quality standards for materials and execution.
1. Architect will select one representative surface and conditions for application of each paint system specified in Part 3.
- a. Vertical and Horizontal Surfaces: Provide samples of at least 100 sq ft (9 sq m).
- b. Other Items: Architect will designate items or areas required.
2. Final approval of color selections will be based on benchmark samples.
- a. If preliminary color selections are not approved, apply additional benchmark samples of additional colors selected by Architect or at added cost to Owner.

- 4.30 PAINT COATINGS
- A. Paint Coatings: Comply with requirements in "MPI Architectural Priming Specification Manual" for primers and paint system indicated.
- B. Mockups: Apply benchmark samples of each paint system indicated and each color and finish selected to verify preliminary selections made under sample submittals and to demonstrate aesthetic effects and set quality standards for materials and execution.
1. Architect will select one representative surface and conditions for application of each paint system specified in Part 3.
- a. Vertical and Horizontal









1. SITE ADDRESS: 230 N. ORANGE STREET  
WILMINGTON, DE 19801
2. OWNER: STATE OF DELAWARE  
P.O. BOX 8  
BEAR, DE 19701
3. ZONING: C-2 (SECONDARY BUSINESS COMM CENTER)
4. SURVEY: TITLED "A PORTION OF DELAWARE TECHNICAL AND  
COMMUNITY COLLEGE ALSO KNOWN AS #230 NORTH  
ORANGE STREET" PREPARED BY TRANSITION  
ENGINEERING SURVEY AND DATED AUGUST 26, 2017
5. DATUM: DELAWARE STATE PLANE NAD 83 NAVD 88
6. FLOODPLAIN: THE SITE IS NOT WITHIN THE 100-YEAR FLOOD PLAIN  
ACCORDING TO FEMA FIRM MAP #10003C0156K DATED  
FEBRUARY 4, 2015.

1. THE PURPOSE OF THESE DRAWINGS IS TO DEPICT PROPOSED RENOVATIONS TO THE EXISTING PLAYGROUND LOCATED AT THE DELAWARE TECHNICAL COMMUNITY COLLEGE CHILD DEVELOPMENT CENTER.
2. PROPOSED RENOVATIONS INCLUDE THE INSTALLATION OF A NEW PLAYGROUND SURFACE MATERIAL, NEW PLAY EQUIPMENT, ASSOCIATED STRUCTURES, FENCING, AND AN ENTRANCE TO THE PLAY AREA BUILDING THAT ADJOINS THE PLAYGROUND AREA.
3. THE CONTRACTOR SHALL REFER TO THE ARCHITECT'S DRAWINGS FOR SPECIFICATIONS REGARDING THE PLAYGROUND EQUIPMENT, FOOTING AND INSTALLATION OF THE EQUIPMENT, AND THE PROPOSED DOOR.

1. THESE DRAWINGS ARE MADE FROM AVAILABLE INFORMATION AT THE TIME THE DRAWINGS WERE PREPARED. COMPLETENESS OR CORRECTNESS THEREOF IS NOT GUARANTEED. IT SHALL BE THE CONTRACTOR'S RESPONSIBILITY TO CONTACT MISS-UTILITY OF DELMARVA (TELEPHONE 1-800-282-8555) NO LESS THAN 72 HOURS PRIOR TO INITIATING INTRUSIVE WORK. THE CONTRACTOR SHALL CONTACT THE OWNERS OF UTILITIES AT RISK AS A RESULT OF CONDUCTING THE WORK HEREIN. THE CONTRACTOR SHALL CONSULT WITH UTILITY OWNERS TO OBTAIN THE MOST ACCURATE INFORMATION AVAILABLE WITH REGARD TO UTILITY ELEVATION AND LOCATION.
2. IT SHALL BE THE CONTRACTOR'S RESPONSIBILITY TO ACCURATELY LOCATE EXISTING UTILITIES (E.G. GAS, WATER, SEWER, ELECTRIC, TELEPHONE, ETC.) PRIOR TO COMMENCING ANY WORK ON THE PROJECT. THE CONTRACTOR SHALL TAKE ALL NECESSARY PRECAUTIONS TO PROTECT ALL EXISTING UTILITIES AND MAINTAIN UNINTERRUPTED SERVICE. ANY DISRUPTION OR DAMAGES DONE TO UTILITIES DUE TO THE CONTRACTOR'S NEGLIGENCE SHALL BE IMMEDIATELY AND COMPLETELY REPAIRED TO THE SATISFACTION OF THE INVOLVED UTILITY COMPANY AT THE SOLE EXPENSE OF THE CONTRACTOR.
3. THE CONTRACTOR SHALL ASSUME THAT NO UTILITY SERVICE WILL BE PROVIDED ON-SITE TO SUPPORT THIS PROJECT.

**TOTAL DISTURBED AREA: 4,173 SF (0.10 AC±)**

1. CONTRACTOR SHALL REMOVE/DEMOLISH EXISTING FEATURES AS SHOWN ON THIS PLAN. QUESTIONS SHOULD BE DIRECTED TO THE DESIGN ENGINEER.
2. CONTRACTOR SHALL REMOVE EXISTING WHEEL STOPS LOCATED AROUND THE PERIMETER OF THE EXISTING PLAYGROUND. A TOTAL OF SEVEN WHEEL STOPS SHALL BE PRESERVED FOR USE AT THE SITE AS PART OF THE PROPOSED CONDITIONS.
3. CONTRACTOR SHALL REMOVE EXISTING SANDBOX AND GAZEBO FROM THE EXISTING PLAYGROUND AREA. IF FOUNDATION FEATURES ARE PRESENT, THEY SHALL BE REMOVED AS NECESSARY TO INSTALL PROPOSED PLAYGROUND SURFACE.

# PLAYGROUND RENOVATION PLAN

## EXISTING CONDITIONS AND DEMOLITION PLAN

DELAWARE TECHNICAL COMMUNITY COLLEGE

**WILMINGTON CHILD DEVELOPMENT CENTER**

CITY OF WILMINGTON ~ NEW CASTLE COUNTY ~ DELAWARE

[illegible]

**DUFFIELD**  
**ASSOCIATES**

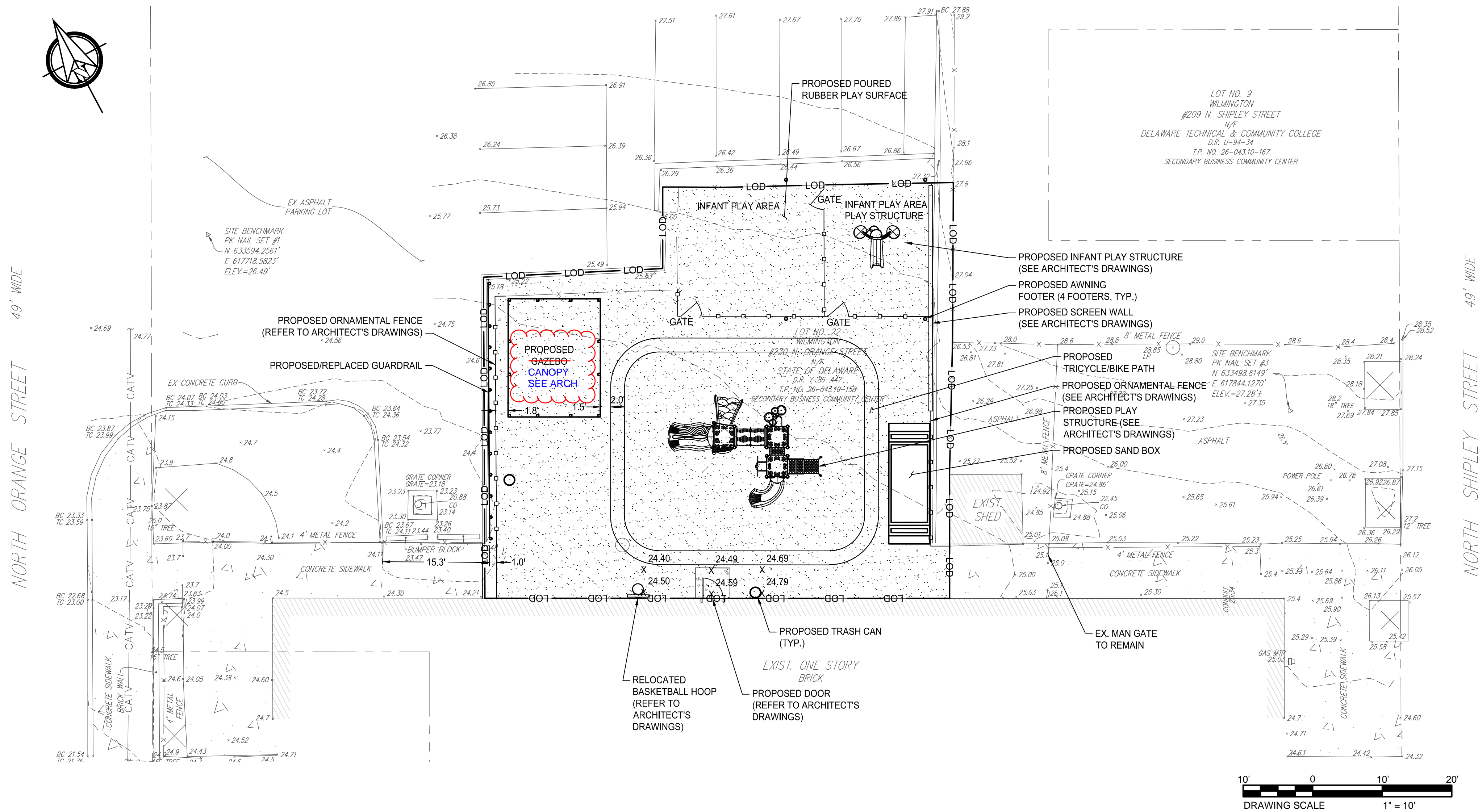
500 West 8th Street  
Seattle, WA 98104  
206.461.1111

5400 LIMESTONE ROAD  
WILMINGTON, DE 19808-1232  
TEL. 302.239.6634  
FAX 302.239.8485

OFFICES IN DELAWARE, MARYLAND,  
PENNSYLVANIA AND NEW JERSEY

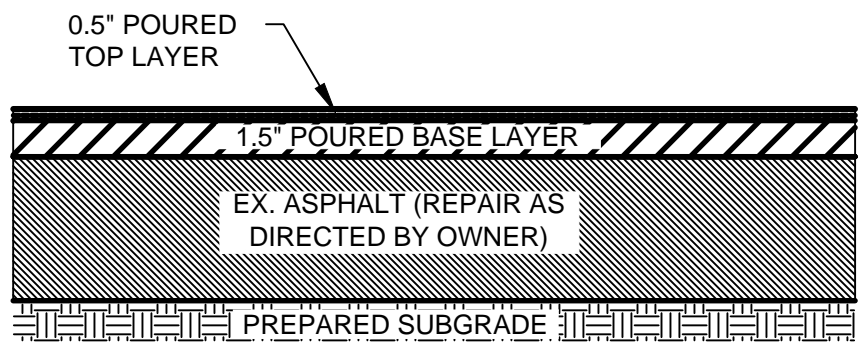
WEB: [HTTP://DUFFNET.COM](http://duffnet.com)  
E-MAIL: [DUFFIELD@DUFFNET.COM](mailto:duffield@duffnet.com)





CONSTRUCTION NOTES

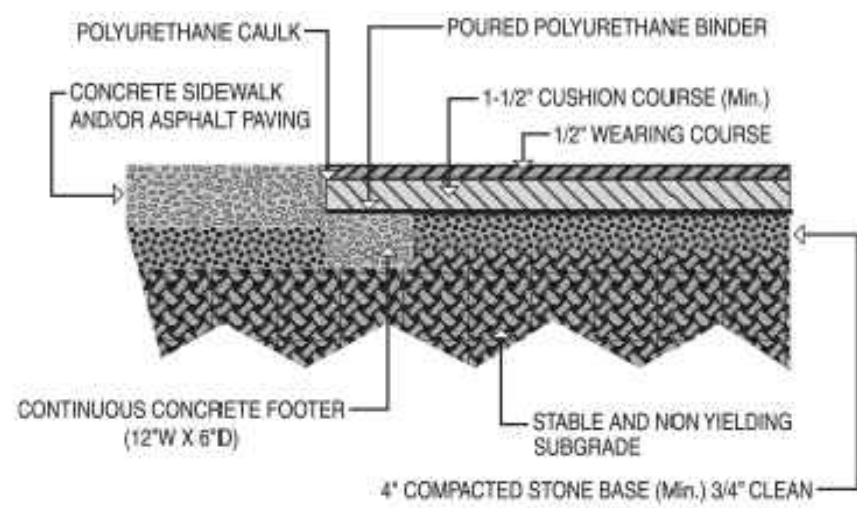
1. INSTALL SAFETY SURFACE LAYERS TO THE MINIMUM DEPTH SPECIFIED IN THE DETAIL.
2. FOLLOW MANUFACTURER'S INSTALLATION DIRECTIONS FOR INSTALLING SAFETY SURFACE.
3. INSTALL THE SAFETY SURFACE TO MATCH EXISTING GRADE WHERE SAFETY SURFACE MEETS EXISTING ASPHALT PARKING LOT AND CONCRETE SIDEWALK. REFER TO DETAIL FOR PREPARING EDGE OF SAFETY SURFACE.
4. PROPOSED SAFETY SURFACE SPOT GRADES HAVE BEEN PROVIDED IN THE REGION OF THE PROPOSED DOORWAY. CONTRACTOR SHALL CONFIRM THAT PROPOSED SPOT GRADES OUTSIDE THE PROPOSED DOORWAY MATCH THE EXISTING ELEVATION INSIDE THE BUILDING.
5. REFER TO ARCHITECT'S DRAWINGS FOR SPECIFIC INFORMATION REGARDING AWNING, FURNITURE, PLAY EQUIPMENT, AND ASSOCIATED FOOTERS.



- NOTES:
1. FOLLOW INSTALLATION INSTRUCTIONS PROVIDED BY THE MANUFACTURER.
  2. ADHERE TO LAYER THICKNESSES AS INDICATED ABOVE.

DETAIL: SAFETY SURFACE

SCALE: NONE



DETAIL: EDGE OF SURFACE

SCALE: NONE

FOR BIDDING ONLY

PLAYGROUND RENOVATION PLAN  
SITE AND GRADING PLAN

DELAWARE TECHNICAL COMMUNITY COLLEGE  
WILMINGTON CHILD DEVELOPMENT CENTER  
CITY OF WILMINGTON ~ NEW CASTLE COUNTY ~ DELAWARE

DATE: 21 FEBRUARY 2018  
SCALE: AS SHOWN  
PROJECT NO. 11392.CA  
SHEET: 2 OF 2



5400 LIMESTONE ROAD  
WILMINGTON, DE 19808-1232  
TEL: 302.239.6634  
FAX: 302.239.8485  
OFFICES IN DELAWARE, MARYLAND,  
PENNSYLVANIA AND NEW JERSEY  
WEB: HTTP://DUFFIELD.NET  
E-MAIL: DUFFIELD@DUFFIELD.NET

DESIGNED BY: AUM

DRAWN BY: AUM

CHECKED BY: SIG

FILE NAME: 11392CA-CONSTR

STEPHEN J. GORSKI, P.E.

STATE: DELAWARE

P.E. # 12625

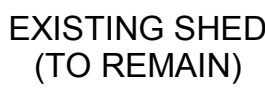




## KEY NOTES

- |    |  |
|----|--|
| A. | EXISTING FOUNDATIONS TO BE REMOVED AS REQUIRED TO NOT INTERFERE WITH NEW PROPOSED CONSTRUCTION   |
| B. | SEE CIVIL DRAWINGS FOR ADDITIONAL DEMOLITION REQUIREMENTS  |
| C. | SEE BUILDING ELEVATIONS FOR ADDITIONAL DEMOLITION REQUIREMENTS   |
| D. | MAJORITY OF EXISTING ALUMINUM FENCING AND GATES ARE EXISTING TO REMAIN. ONLY DEMOLISH EXISTING FENCING SPECIFICALLY CALLED OUT BY KEY NOTE 2 |

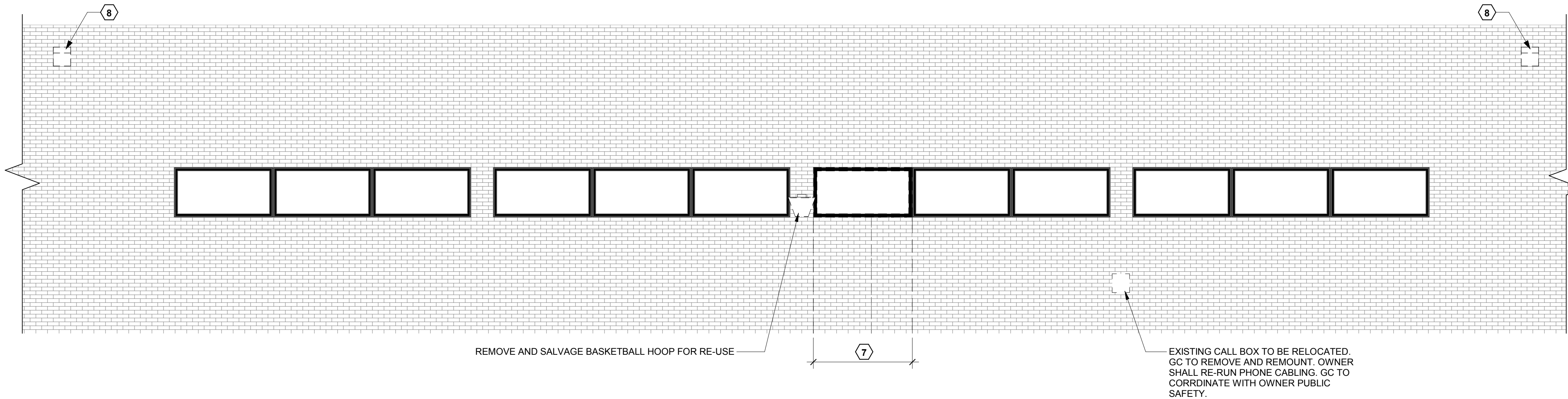
- DEMOLISH EXISTING LIGHT POST AND FOUNDATION. CAP ELECTRICAL CONDUIT BELOW GRADE. MAKE WIRES SAFE
- DEMOLISH EXISTING FENCE
- DEMOLISH EXISTING RUBBER TILE FLOOR AND PREPARE SURFACE FOR NEW WORK
- DEMOLISH PLAYGROUND EQUIPMENT. EXTENTS OF DEMOLITION TO BE FLUSH WITH EXISTING GRADE OF ASPHALT. DEMOLITION OF STRUCTURE BELOW ASPHALT TO BE COORDINATED WITH ANY CONFLICTS OF NEW PLAYGROUND EQUIPMENT AT CONTRACTORS EXPENSE
- EXISTING GAZEBO TO BE DEMOLISHED AND DISPOSED OF IN ITS ENTIRETY.
- DEMOLISH SANDBOX AND FOUNDATION IN ITS ENTIRETY
- DEMOLISH PORTION OF EXISTING EXTERIOR MASONRY WALL AND WINDOW. PREPARE MASONRY FOR INSTALLMENT OF ALUMINUM STOREFRONT DOOR SYSTEM. REFER TO DEMOLITION ELEVATION FOR THE EXTENTS OF DEMOLITION
- LIGHT FIXTURES TO BE REPLACED WITH NEW. SEE DEMOLITION ELEVATION FOR EXTENTS
- DEMOLISH ASTROTURF AND RUBBER TILES DOWN TO ASPHALT SURFACE
- REMOVE AND SALVAGE BASKETBALL HOOP FOR RE-USE
- REMOVE AND SALVAGE EXISTING CALL BOX TO FOR RE-USE. CORRDINATE WITH PUBLIC SAFETY
- CONTRACTOR TO PROVIDE BREAKOUT COST AS REQUESTED ON BID FORM TO REMOVE EXISTING ASPHALT IN THE HATCHED AREA. EXISTING ELEVATION AT NEW DRAIN WILL DETERMINE THE NEED FOR THIS SCOPE OF WORK TO AVOID SLOPING BACK TO THE NEW DRAIN
- GENERAL CONTRACTOR WILL BE RESPONSIBLE FOR ANY TEMPORARY REMOVAL OF GAURDRAIL OR FENCING IN THE EVENT HEAVY MACHINERY IS REQUIRED FOR DEMOLITION ON SITE. REMOVAL OF EITHER TYPE SHALL BE SALVAGED AND REINSTALLED BACK TO EXISTING LOCATION IN EXISTING CONDITION
- REMOVE AND SALVAGE EXISTING EQUIPMENT FOR RE-USE



### EXISTING CHILD DEVELOPMENT CENTER

1  
D101

**DEMOLITION SITE PLAN**  
Scale : 1/4" = 1'-0"



3 DEMOLITION - FRONT ELEVATION  
D101 Scale : 1/4" = 1'-0"

PROJECT

**DELAWARE  
TECHNICAL  
COMMUNITY  
COLLEGE  
CHILD  
DEVELOPMENT  
CENTER  
PLAYGROUND  
RENOVATION**

333 N. SHIPLEY STREET

OWNER

☐ DELAWARE  
TECHNICAL  
COMMUNITY  
COLLEGE

Orlando J. George Jr. Campus

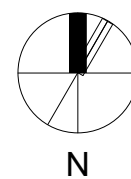
☐ **DEMOLITION SITE PLAN**

**FOR BIDDING**

## ❑ ISSUE

[illegible]

Date	02/23/2018
Scale	As indicated
Drawn	NCF
Checked	SRC
Approved	SRC
Project	17001

Sheet **D101**



A. REFERENCE LANDSCAPE DRAWINGS FOR DIMENSIONS NOT SHOWN.

B. PLAN INTENTIONALLY DOES NOT SHOW ANY EQUIPMENT TO CLEARLY INDICATE EXTENT OF POURED RUBBER SURFACE

1. NEW ASTROTUFF TO BE ROLLED OUT OVER  
NEWLY POURED IN PLACE RUBBER FLOOR
2. NEW SECTION OF FENCE / FENCE GATE. NE  
GATES TO BE PROVIDED WITH HARDWARE  
PER KEY NOTE 5
3. NEW PRESSURE TREATED (P.T.) WOOD POS  
TYPICAL OF SCREEN WALL. REFER TO A301  
FOR DETAILS
4. NEW METAL POST TYPICAL OF SHADE SYST  
REFER TO A201 FOR DETAILS
5. ALL DOOR LATCH SYSTEMS TO BE REPLAC  
(MAGNALATCH SERIES 2 TOP PULL TO BE  
BASIS OF DESIGN). ALSO PROVIDE NEW  
SPRING LOADED HINGES FOR SELF CLOSING
6. EXISTING WINDOWS FACING PLAYGROUND  
TO BE PAINTED PER SPECIFICATIONS
7. NEW LIGHT FIXTURES
8. EXISTING CONCRETE TO REMAIN
9. RELOCATED CALL BOX
10. EDGE OF NEW CANOPY ABOVE
11. EXISTING ALUM FENCE TO BE PAINTED.

Scale : 1" = 20'-0"

- 1 CONTINUOUS HINGE
- 1 EXIT DEVICE
- 1 CYLINDER
- 1 CONCEALED OVERHEAD
- 1 DOOR CLOSER
- 1 CARD READER
- 1 DOOR SWEEP (PEMCO)
- 1 RAIN GAUGE (PEMCO)
- 1 THRESHOLD (PEMCO)

NOTES: PERIMETER AND MEETING STILE GASKET BY DOOR / FRAME MANUFACTURER

MANUFACTURER'S ABBREVIATIONS:

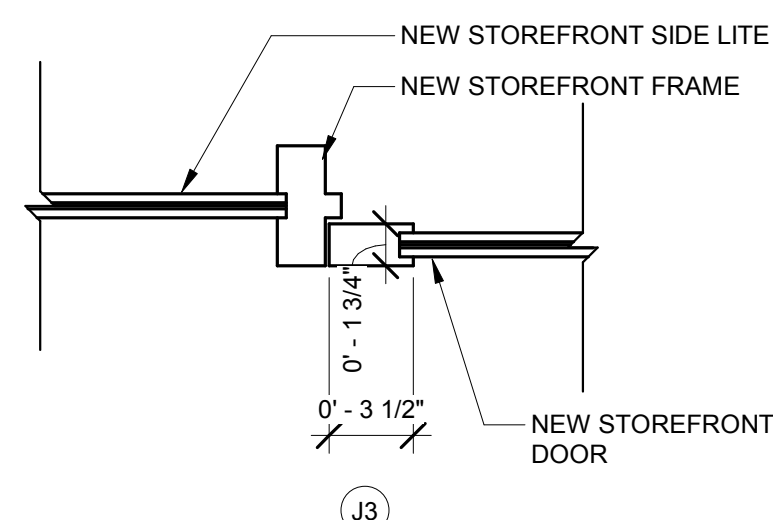
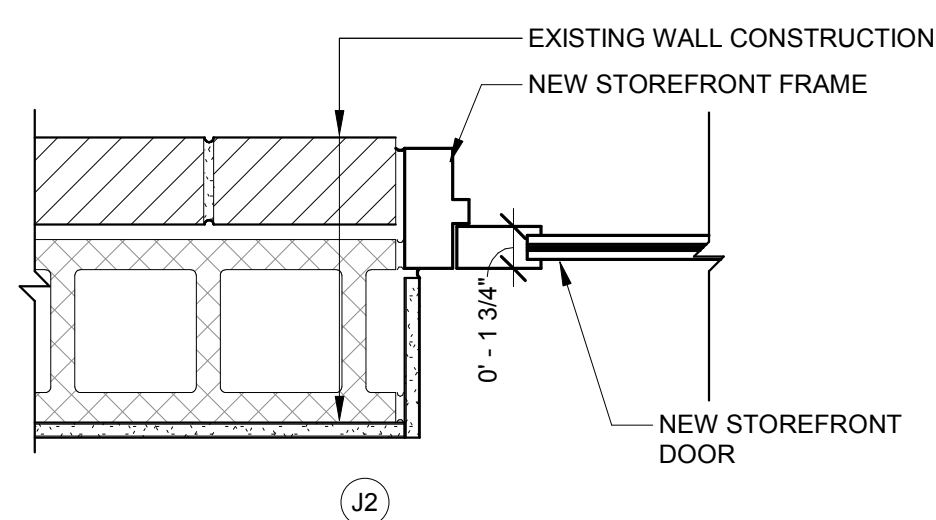
1. MK - McKinney
2. PE - Pemko
3. RO - Rockwood
4. SA - Sargent
5. RF - Rixson
6. NO - Norton
7. SU - Securitron

CFM\_SLF-HD1  
AD8413 ETB  
MATCH EXISTING  
6-036  
7500ST  
  
3452NB  
346C

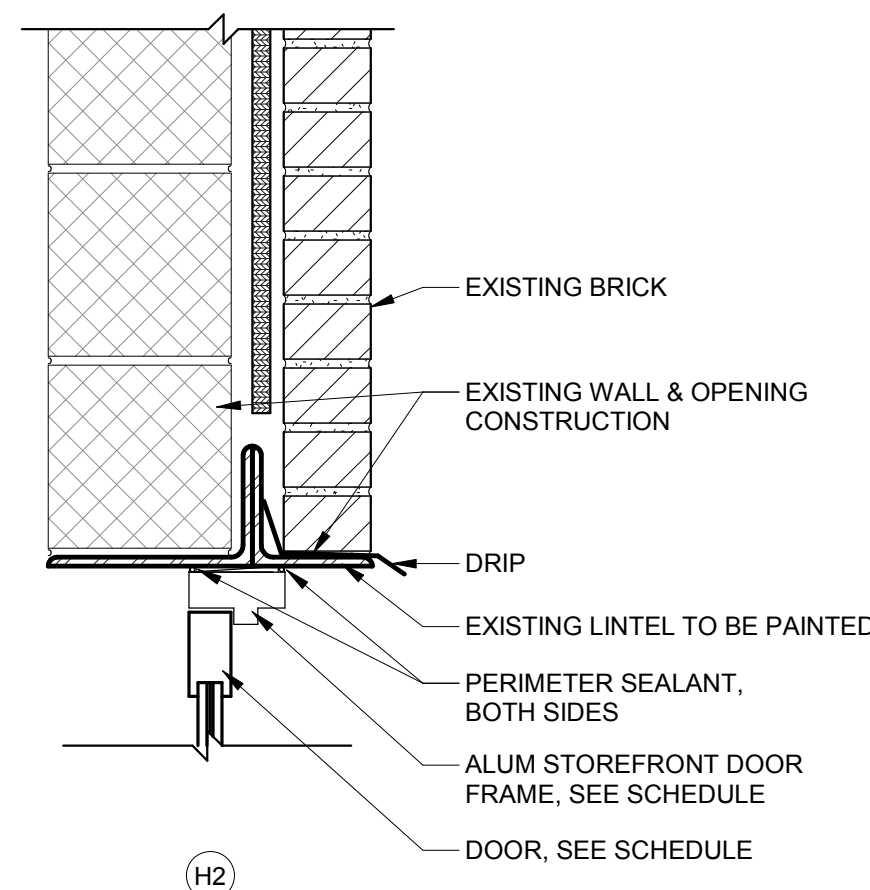
DARK BRONZE	PE
625	SA
630	RF
DARK BRONZE	
DARK BRONZE	
DARK BRONZE	

Mark	OPENING		DOOR					FRAME			DETAIL				COMMENTS	
	WIDTH	HEIGHT	Type	Door Material	FINISH	HARDWARE GROUP	GLAZING TYPE	Fire Rating	Frame Type	MATERIAL	FINISH	HEAD	JAMB	SILL		HARDWARE SET
1	3' - 0"	8' - 0"	A	ALUM	PT		G1		ALUM	ALUM		H2	J2/J3		01	

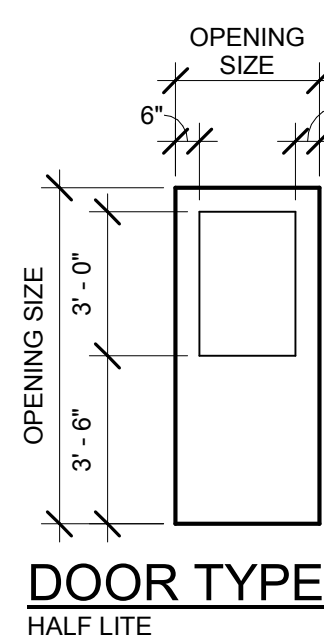
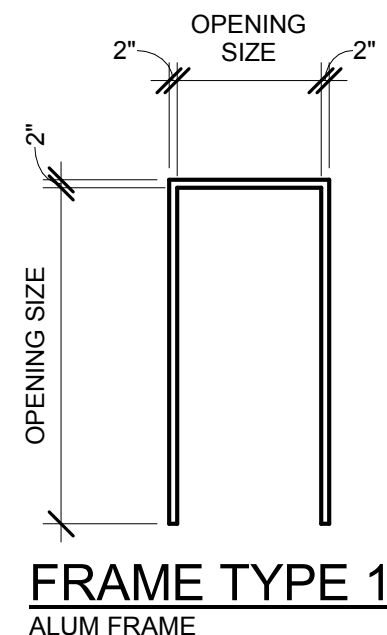
GLAZING TYPE  
G1 - 1" CLEAR TEMPER INSULATED



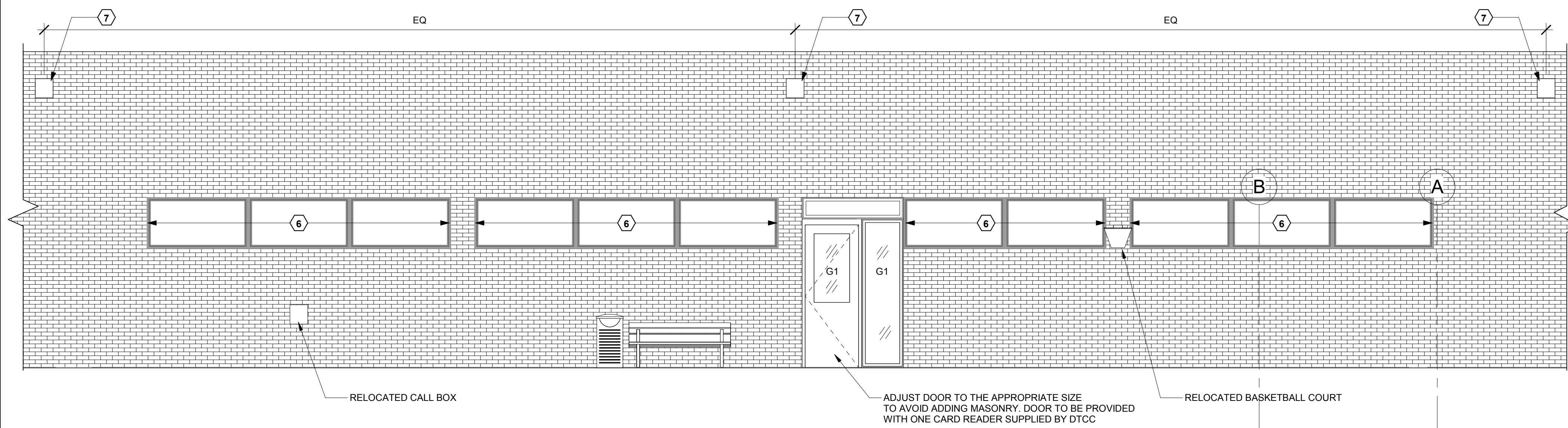
Scale : 1 1/2" = 1'-0"



101 Scale : 1/4" = 1'-0"



Scale :  $1/4" = 1'-0"$



Scale :  $1/4" = 1'-0"$

Scale : 1 1/2" = 1'-0"

Scale : 1 1/2" = 1'-0"



**TEVEBAUGH**  
ARCHITECTURE

Two Mill Road, Suite 210  
Wilmington, Delaware 19806  
(302) 984-1400  
FAX (302) 984-2957



PROJECT

☐ DELAWARE  
TECHNICAL  
COMMUNITY  
COLLEGE  
CHILD  
DEVELOPMENT  
CENTER  
PLAYGROUND  
RENOVATION

333 N. SHIPLEY STREET

OWNER

☐ DELAWARE  
TECHNICAL  
COMMUNITY  
COLLEGE

Orlando J. George Jr. Campus

☐ **NEW CONSTRUCTION  
- EQUIPMENT PLAN**

☐ **FOR BIDDING**

**ISSUE**

[illegible]

Date	02/23/2018
Scale	As indicated
Drawn	NCF
Checked	SRC
Approved	SRC
Project	17001

Sheet **A102**

**NEW CONSTRUCTION - EQUIPMENT PLAN**  
Scale : 1/4" = 1'-0"

Scale : 1/4" = 1'-0"

© 2018 TEVERAUGH ARCHITECTURE



☐ DELAWARE  
TECHNICAL  
COMMUNITY  
COLLEGE  
CHILD  
DEVELOPMENT  
CENTER  
PLAYGROUND  
RENOVATION

☐ DELAWARE  
TECHNICAL  
COMMUNITY  
COLLEGE

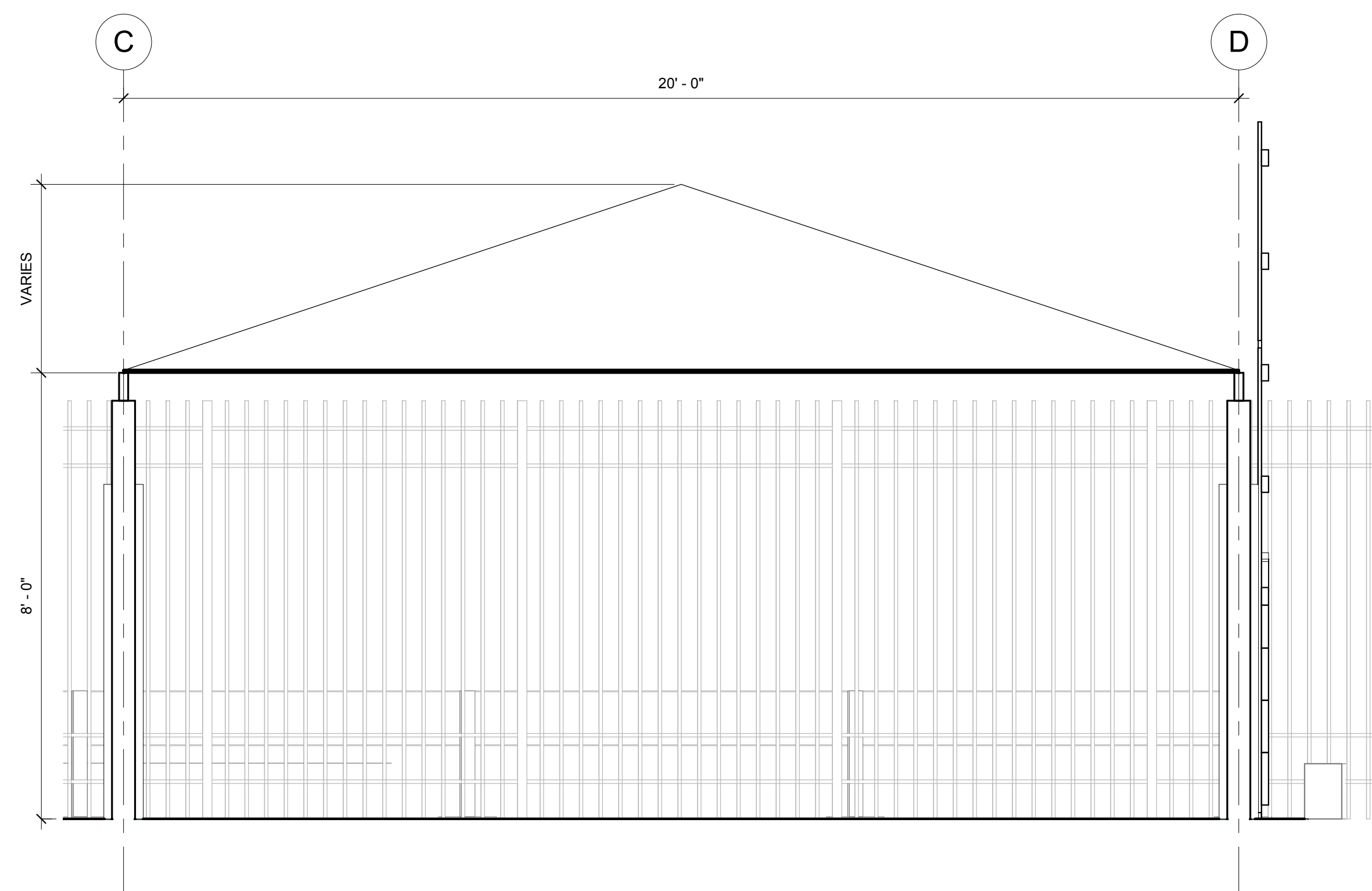
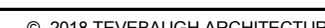
- **CANOPY PLANS & SECTIONS**

**☐ FOR BIDDING**

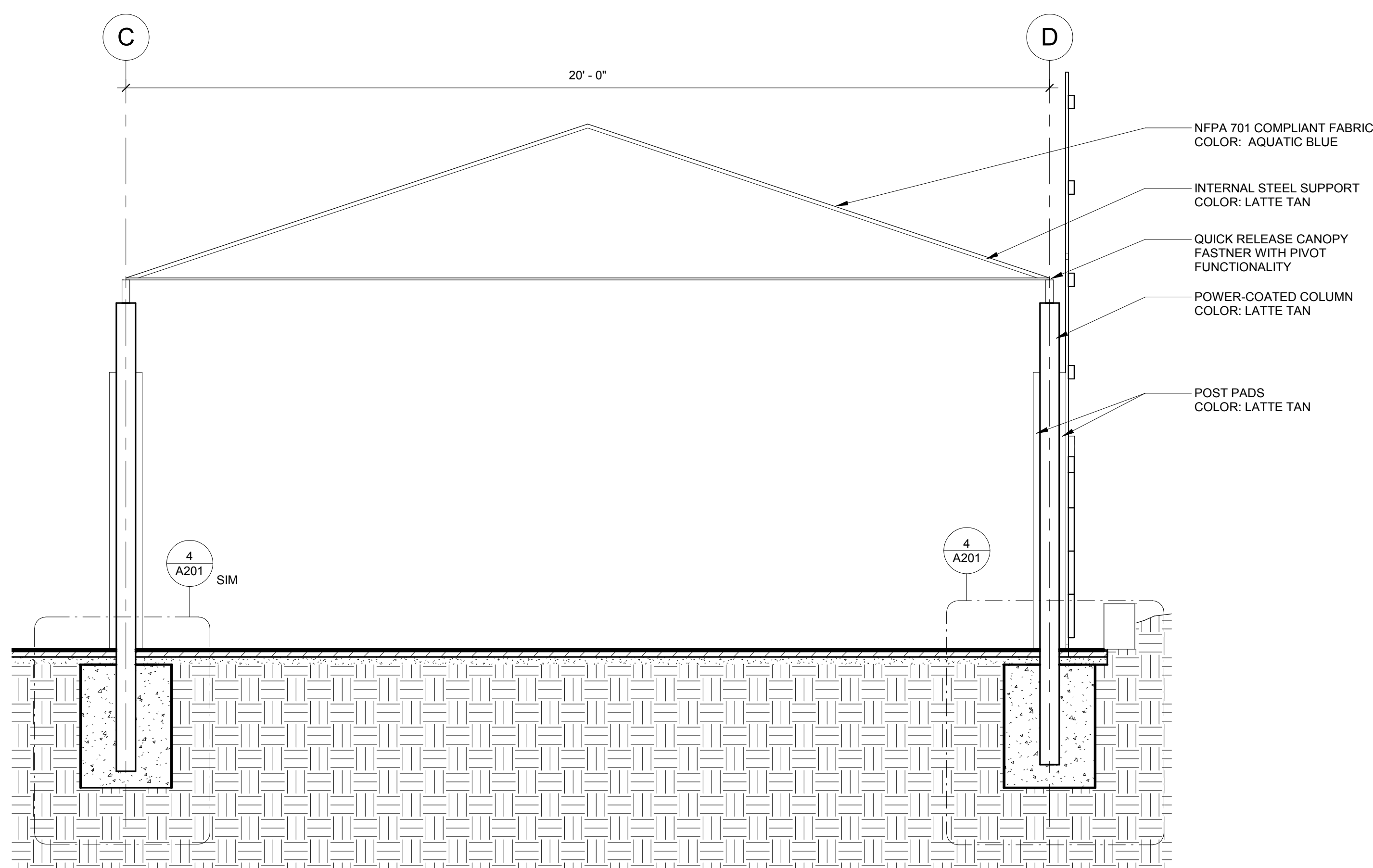
**ISSUE**

[illegible]

Date	02/23/2018
Scale	As indicated
Drawn	NCF
Checked	SRC
Approved	SRC
Project	17001

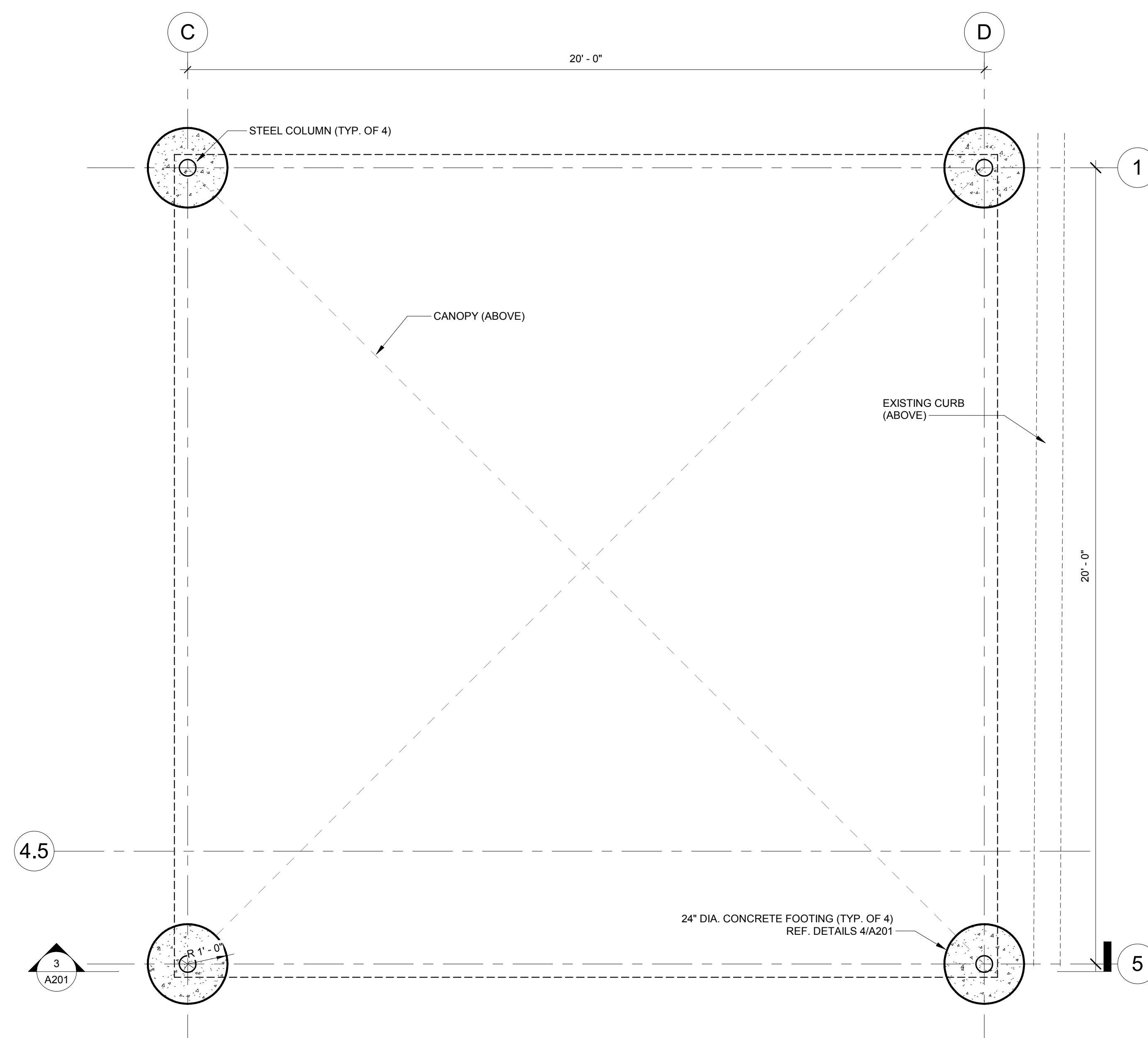
Sheet **A201**

**1**  
**A201** **CANOPY - ELEVATION**  
Scale : 1/2" = 1'-0"



3  
A201

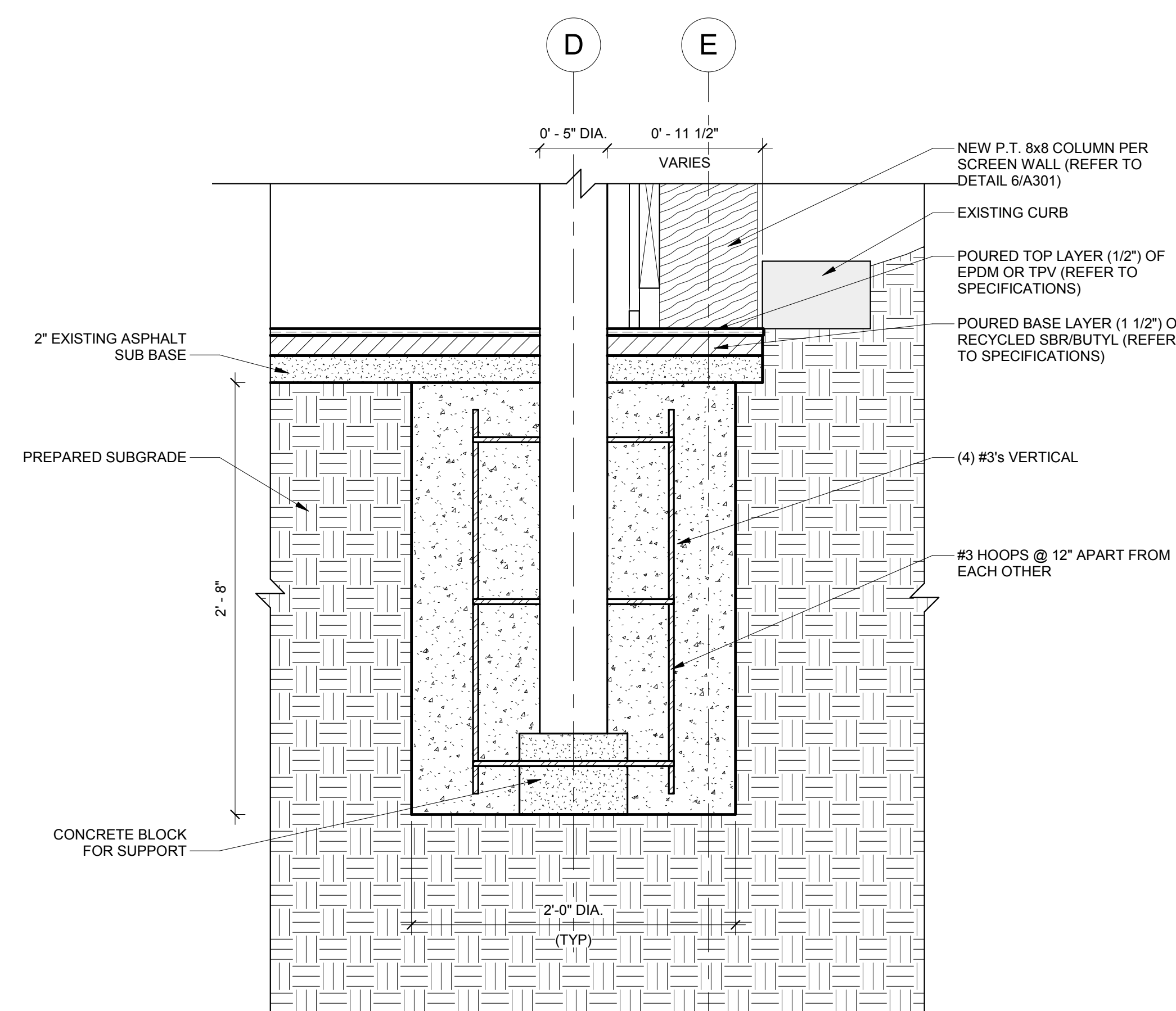
**CANOPY - SECTION**  
Scale : 1/2" = 1'-0"



2  
A201

**CANOPY - FOUNDATION PLAN**  
Scale : 1/2" = 1'-0"

NOTE: CANOPY DETAILS ARE TYPICAL AND ALSO APPLY TO THE 10'X15' CANOPY TO BE LOCATED AS SHOWN ON NEW CONSTRUCTION PLANS.



4 **CANOPY - FOOTING AT EDGE OF SURFACE DETAIL**  
A201 Scale: 1 1/2" = 1'-0"



333 N. SHIPLEY STREET

- DETAILS, SECTIONS, ELEVATIONS

**□ FOR BIDDING**

[illegible]Sheet **A301**