



ADDENDUM NO. 5
DTCC OFFICE OF THE PRESIDENT
BID PACKAGE B
Dover, Delaware 19904

March 19, 2013

NOTICE: Attach this addendum to the project manual for this project. It modifies and becomes a part of the contract documents. Work or materials not specifically mentioned herein are to be described in the main body of the specifications and as shown on the drawings. Bidders shall acknowledge receipt of this addendum on the space provided on the Bid Form. Failure to do so may subject the bidder to disqualification.

Whenever this Addendum modifies a portion of the Project Manual added information is shown as **Bold** and deleted information is shown as strikethrough.

The contract documents for the above referenced project, dated February 5, 2013 are amended as follows:

General Clarifications:

- The bid opening location remains at the **Terry Campus ETB, Room 741 on March 21, 2013 at 2pm.**
- Architect's Digital Data Files: Electronic copies of digital data files of the Contract Drawings will be provided by the Design Professionals for Contractor's use in preparing submittals for a fee of \$200 per drawing file, and the execution of a Digital Media Release Form. All contractors should include these costs in the Base Bid if they plan on utilizing them if awarded.

Questions and Answers:

1. Q. Dwg. E103, are any fire alarm detection devices required to be installed in the attic?
A. Yes, provide fifteen (15) additional smoke detectors as required to protect the Attic.
2. Q. Addendum 3 apparently changes the wall type fire dept connection to a sidewalk type. It also states that we are to coordinate this with C-301, however C3-301 still shows the FDC on the building. Please advise is there is a new C-301 with the FDC being piped underground and a remote location for it or if it is to remain on the building as indicated.
A. Sheet C-301 attached showing revision to fire department connection on plan view and construction note No. W-13.
3. Q. Section 130660 Bullet Resistant Aluminum Door: Is this assembly in our scope or General Trades?
A. Yes in Glass and Glazing contract not General Trades.

Changes to Specifications:

- Section 13 06 61 – Bullet Voice Around Windows: ADD Specification Section 130661 - Bullet Voice Around Windows, dated 03/13/13.



EDiS COMPANY

TEL. (800) 995-EDiS • ediscompany.com

- Section 26 05 19 – Grounding and Bonding for Electrical Systems Correction– DELETE the sentence “Delete the first sentence in 2 .2.C, “Maximum water volume of 49 gallons.””
- Section 21 13 16 Dry-Pipe Sprinkler System: ADD this to the specification section; DELETE this section in its entirety. Provide a Glycol Filled sprinkler system to serve the Attic and Entry Vestibule.

End of Addendum No 5

SECTION 130661 - BULLET VOICE AROUND WINDOW

PART 1 GENERAL

1.1 REFERENCE

- A. Underwriters Laboratory UL 752-Standard for Bullet Resisting Equipment & ASTM E119-98- Standard Test Methods for Fire Tests of Building Construction and Materials, NIJ Standard 0108.01-(National Institute of Justice) Standard for Ballistic Resistant Protective Materials, ASTM B 209/B 209M- Standard Specification for Aluminum and Aluminum Alloy Sheet and Plate, ASTM A 666-Standard Specification for Annealed or Cold-Worked Austenitic Stainless Steel Sheet, Strip, Plate and Flat Bar..

1.2 SUBMITTALS

- A. The following shall be submitted by the manufacturer in accordance with any Special Contract Requirements: Submit for approval prior to fabrication: samples, product data (including preparation, storage and installation methods), cuts & anchor spacing, reinforcement & location , product specifications, shop drawings, test reports (current UL Listing Verification & UL 752 Test Results as provided by Underwriters Laboratories), and printed data in sufficient detail to indicate compliance with the contract documents.
- B. Manufacturer's Instructions for installation and cleaning of Bullet Transaction Window Assemblies. All required submittals shall be approved prior to installation.

1.3 DESIGN PERFORMANCE

- A. Through the design, manufacturing techniques and material application the Aluminum Voice Around Transaction Window shall be of the "non-ricochet" type. This design is intended to permit the encapture and retention of an attacking projectile lessening the potential of a random injury or lateral penetration. This assembly shall provide single transaction positions utilizing the "natural voice rail" configuration. This design shall employ mounting blocks in vertical framing tubes to complete the "natural voice rail" design. Each transaction position shall have a stainless steel dip tray as shown on the drawings. Components must be manufactured in strict accordance with the specifications, design and details. All vision panels shall be cut to size with all exposed edges polished. Necessary holes shall be pre drilled and tapped where required. Stainless Steel assembly screws and acrylic spacers shall be provided. Anodized angles and channels shall be provided. Anchor screws shall be provided by the installer.
- B. No field alterations to the construction of the units fabricated under the acceptable standards shall be allowed unless approved by the manufacturer and the architect. Standard manufacturing tolerances shall be +/- 1/16".
- C. Materials shall meet or exceed UL 752 requirements.

1.4 QUALITY ASSURANCE

- A. Manufacturer shall be a Company that specializes in manufacturing products of the specified type with a minimum of five years experience. Installer shall be a Company that specializes in product type specified and Certified for the installation by the manufacturer. Manufacturer shall provide a Mock-up, if required, for evaluation of surface preparation and application workmanship and color/finish to the Architect for approval prior to start of work.

1.5 DELIVERY, STORAGE & HANDLING

- A. Delivery the materials to the project with the manufacturer's UL Listed Labels intact and legible. Handle the materials with care to prevent damage. Store materials inside and under cover, stack flat and off floor. Project conditions (temperature, humidity, and ventilation) shall be within the maximum limit recommendations set by manufacturer. Do not install products that are under conditions outside these limits.

1.6 WARRANTY

- A. All materials shall be warranted against defects for a period of 1 year for the date of receipt at the project site. Certificates of manufacturer's standard limited warranty shall be provided at project completion.

PART 2 PRODUCTS

2.1 ACCEPTABLE MANUFACTURERS

- A. Products shall be manufactured by: Total Security Solutions, Inc, 170 National Park Drive, Fowlerville, MI 48836, or comparable product.

2.2 BULLET RESISTANT ALUMINUM VOICE AROUND TRANSACTION WINDOW

- A. Product shall be: TSS AVA Aluminum Voice Around Transaction Window. All aluminum transaction window allows for natural voice communication without a breach of security. Available in a clear or bronze aluminum finish, incorporates either a plastic laminate or stainless steel counter..

- B. Glazing Panels shall be:.

Bullet-Resisting Glazing Material Options:

Bullet Resistant Level 2
1" LP 1000 Laminated

- C. Aluminum sections to be manufactured in accordance with ASTM B209, Extruded aluminum alloy 6063 T5 Anodized and be free of sharp edges or burrs when in place. Glazing Channel: U-Channel specifically designed for securing transparencies tightly in place. Angles and stops are only acceptable for top attachment.

1) Frame to be anodized aluminum. The bottom of the glazing to be capped with corresponding material on the frame (ie: stainless steel on stainless steel). Provide a shelf 2" thick with a recessed deal tray. The shelf to be full width of window, 12" deep, centered under the glazing and covered with a black high pressure laminate.(optional stainless steel 18 ga. #4 finish).

2). Deal tray to be 18 ga. stainless steel, # 4 finish 16" x 10" from the outside edge of flanges with a clear opening .

D.. Product size shall be: TSS AVA Aluminum Voice Around Transaction Window

1) Size shall be as shown on drawing

2) Color options shall be Dark Bronze, to match existing.

PART 3 EXECUTION

3.1 PREPARATION

A. Prior to installing the bullet resistive material, the contractor shall verify that all supports have been installed as required by the contract documents, architectural drawings, and approved shop drawings, if required. Installer shall notify architect of any unsatisfactory preparation that is responsibility of another installer.

B. Clean and prepare all surfaces per manufacturers recommendations for achieving the best results for the substrate under the project conditions.

3.2 INSTALLATION

A. Do not begin installation until openings have been verified and surfaces properly prepared in accordance with Drawings. Install in accordance with manufacturer's instructions and UL 752. Set all equipment plumb. All products shall be installed per installation instructions provided by Total Security Solutions, if warranty is to be issued.

B. TSS AVA Aluminum Voice Around Transaction Window; shall arrive on site as a completed unit. Unit shall be installed in provided opening (wall/door), secured to structure (anchors by others).

3.3 POST APPLICATION

A. TSS AVA Aluminum Voice Around Transaction Window shall be installed in accordance with manufacturer's printed recommendations, including adhering to anchoring and finishing details.

Additions & Renovations
Office of the President
Delaware Technical Community College
Terry Campus, Dover, Delaware

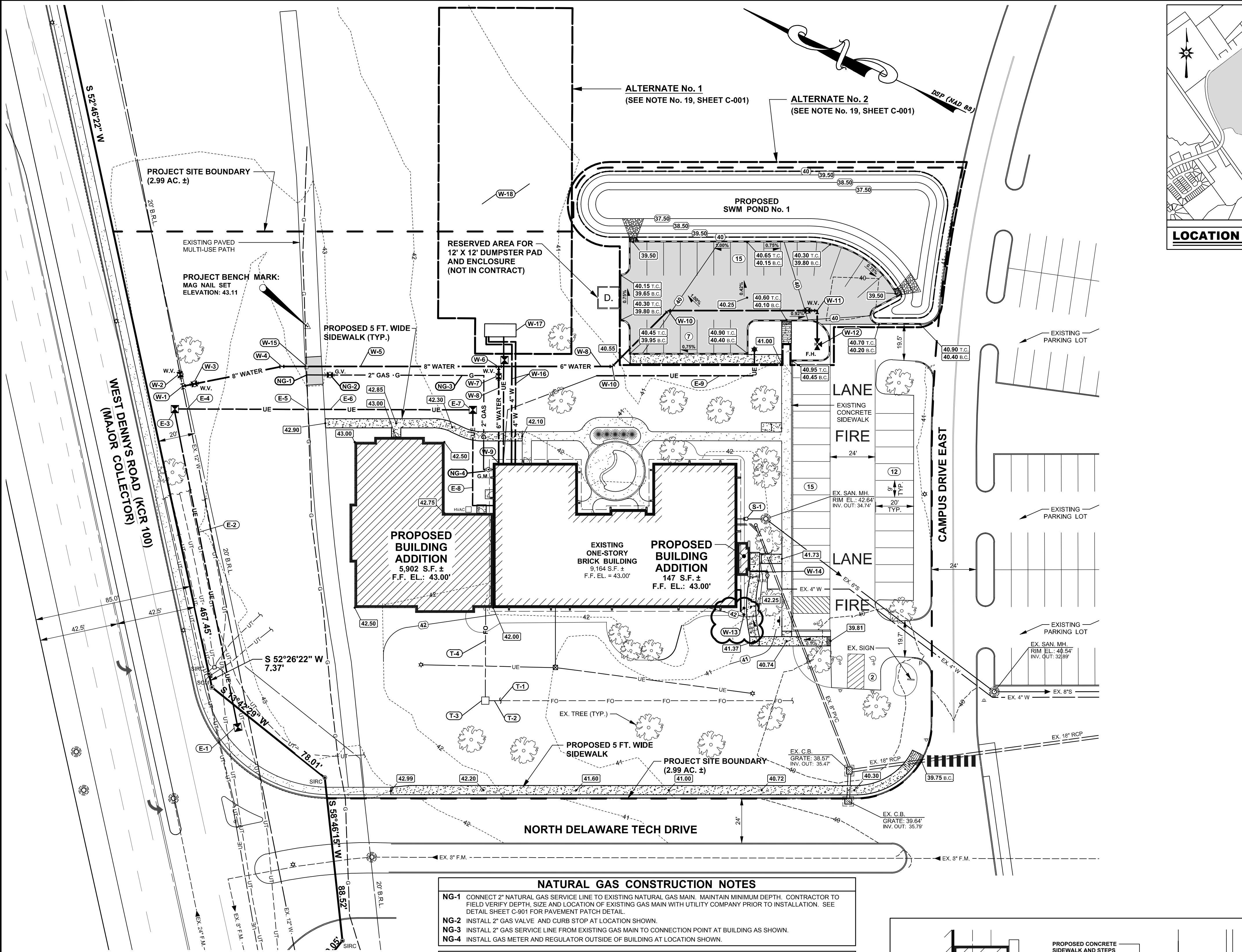
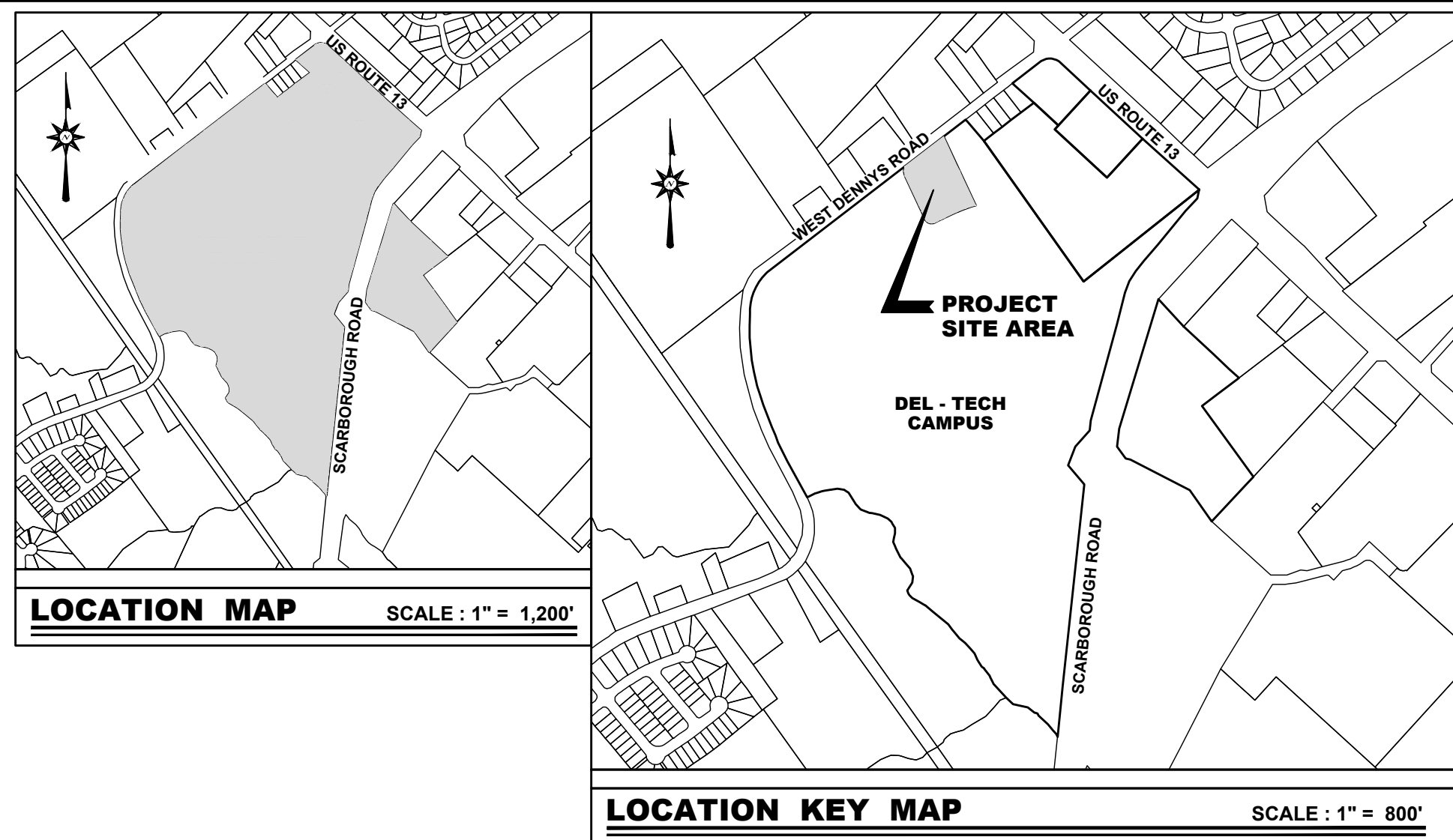
BMG Project Number 2012025.00
March 13, 2013

B. Inspection and Cleaning: Verify installation is complete and complies with manufacturer's requirements. Clean product and accessories, removing excess sealant, labels and protective covers.

C. Touch-up, repair or replace damaged products before Substantial Completion.

D. Product Warranty: Applicable warranty shall be issued to owner upon final release of completed project.

END OF SECTION 130661



NATURAL GAS CONSTRUCTION NOTES

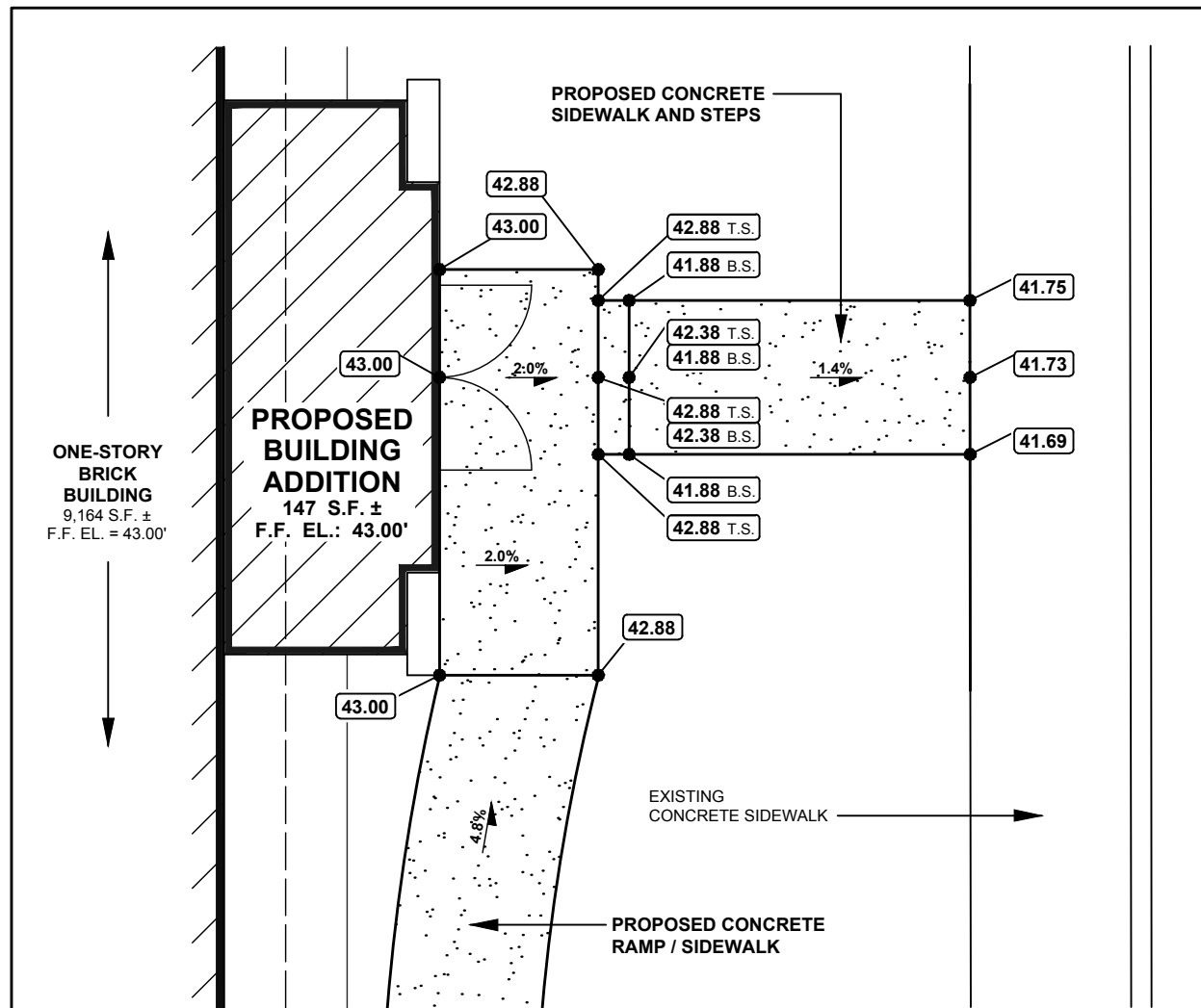
- NG-1** CONNECT 2" NATURAL GAS SERVICE LINE TO EXISTING NATURAL GAS MAIN. MAINTAIN MINIMUM DEPTH. CONTRACTOR TO FIELD VERIFY DEPTH, SIZE AND LOCATION OF EXISTING GAS MAIN WITH UTILITY COMPANY PRIOR TO INSTALLATION. SEE DETAIL SHEET C-901 FOR PAVEMENT PATCH DETAIL.
- NG-2** INSTALL 2" GAS VALVE AND CURB STOP AT LOCATION SHOWN.
- NG-3** INSTALL 2" GAS SERVICE LINE FROM EXISTING GAS MAIN TO CONNECTION POINT AT BUILDING AS SHOWN.
- NG-4** INSTALL GAS METER AND REGULATOR OUTSIDE OF BUILDING AT LOCATION SHOWN.

SANITARY SEWER CONSTRUCTION NOTES

- S-1** INSTALL A 4" SANITARY SEWER CLEANOUT FIVE FEET OUTSIDE THE BUILDING ON THE EXISTING 4" SANITARY SEWER LINE AT LOCATION SHOWN. CONTRACTOR TO VERIFY SIZE AND INVERT ELEVATION OF SEWER LINE PRIOR TO INSTALLATION.

DOMESTIC WATER SYSTEM CONSTRUCTION NOTES

- W-1** INSTALL 12"x12"x8" TEE AT LOCATION SHOWN. INSTALL "POWERSEAL 3490AS" TAPPING SLEEVE AND VALVE AND CONNECT 8" D.I.P. CLASS 52 CEMENT LINED WATER MAIN TO EXISTING 12" WATER MAIN LOCATED ON SOUTH SIDE OF WEST DENNIS ROAD. PROVIDE 48" MIN. COVER.
- W-2** INSTALL 12" GATE VALVE AND BOX AT LOCATION SHOWN. SEE DETAIL SHEET C-902.
- W-3** INSTALL 8" GATE VALVE AND BOX AT LOCATION SHOWN. SEE DETAIL SHEET C-902.
- W-4** INSTALL 6" 11-1/4" BEND AT LOCATION SHOWN. SEE DETAIL SHEET C-902 FOR THRUST BLOCK SPECIFICATIONS.
- W-5** INSTALL 8" D.I.P. CLASS 52, CEMENT LINED WATER MAIN. (PROVIDE 48" MIN. COVER).
- W-6** INSTALL 8"x6"x6" TEE AT LOCATION SHOWN.
- W-7** INSTALL 6" GATE VALVE AND BOX AT LOCATION SHOWN. SEE DETAIL SHEET C-902.
- W-8** INSTALL 6" D.I.P. CLASS 52, CEMENT LINED WATER MAIN FOR FIRE PROTECTION SERVICE. (PROVIDE 48" MIN. COVER).
- W-9** INSTALL FIRE MAIN PIPE RESTRAINT OR FIRE SERVICE MAIN INSIDE BUILDING. SEE DETAIL SHEET C-902. SEE ARCHITECTURAL PLANS AND MECHANICAL PLANS FOR LOCATION OF RESTRAINT WITHIN MECHANICAL ROOM.
- W-10** INSTALL 6" 45" BEND AT LOCATIONS SHOWN. SEE DETAIL SHEET C-902 FOR THRUST BLOCK SPECIFICATIONS.
- W-11** INSTALL 6" 90" BEND AT LOCATION SHOWN. SEE DETAIL SHEET C-902 FOR THRUST BLOCK SPECIFICATIONS.
- W-12** INSTALL 6" WATER MAIN 6" ISOLATION VALVE AND BOX AND FIRE HYDRANT AT LOCATION SHOWN. SEE DETAIL SHEET C-902.
- W-13** INSTALL FREE STANDING 8" STORY TYPE FIRE DEPARTMENT CONNECTION APPROXIMATELY 5 FT. OFF SOUTHWESTERN CORNER OF BUILDING AT EDGE OF PLANTER AREA. SEE FIRE PROTECTION SPECIFICATION AND PLANS FOR MATERIALS. INSTALL "FIRE DEPARTMENT CONNECTION" SIGN PER DELAWARE STATE FIRE PREVENTION REGULATIONS. SEE DETAIL SHEET C-901 FOR SIGN DETAIL.
- W-14** RELOCATE EXISTING 2" WATER SERVICE LINE FOR CONSTRUCTION OF PROPOSED CONCRETE WALKWAY AND BUILDING ENTRANCE. CONTRACTOR SHALL INSTALL A 2" DOUBLE CHECK VALVE BACKFLOW PREVENTER ON THE EXISTING WATER METER WITHIN THE EXISTING WATER METER PIT AND RELOCATE ONE (1) EXISTING 2" BALL VALVE. PROVIDE ASSOCIATED PIPING AS REQUIRED. CONTRACTOR SHALL RELOCATE 2" WATER SERVICE LINE TO A RISER PIPE INSIDE WALL AT CORNER OF VESTIBULE AS SHOWN. SEE MECHANICAL PLANS FOR DETAILS.
- W-15** PRIOR TO INSTALLATION OF WATER MAIN, CONTRACTOR SHALL VERIFY LOCATION AND DEPTH OF EXISTING GAS MAIN. CONTRACTOR SHALL MAINTAIN A MINIMUM OF EIGHTEEN-INCH (18") VERTICAL CLEARANCE BETWEEN THE GAS MAIN AND THE NEW WATER MAIN AT THE CROSSING. SEE DETAIL SHEET C-901 FOR PAVEMENT PATCH DETAIL.
- W-16** INSTALL DUEL 4" WATER SERVICE LINES FROM COOLING TOWER (BASE BID) OR GEOTHERMAL MANIFOLD VAULT (ALTERNATE NO. 1) TO BUILDING AS SHOWN. SEE MECHANICAL PLANS FOR DETAILS.
- W-17** INSTALL COOLING TOWER (BASE BID) OR GEOTHERMAL MANIFOLD VAULT (ALTERNATE NO. 1) AT LOCATION SHOWN. SEE MECHANICAL PLANS FOR DETAILS. NOTE: PEAK WATER DEMAND FOR COOLING TOWER WILL BE 135 GALLONS. THE CONDENSER WATER WILL NOT BE CONNECTED TO THE EXISTING WATER SERVICE LINE.
- W-18** INSTALL GEOTHERMAL WELL FIELD AT LOCATION SHOWN. SEE MECHANICAL PLANS FOR DETAILS.



BUILDING ENTRANCE ELEVATIONS DETAIL

NO SCALE

UTILITY CONSTRUCTION GENERAL NOTES:

GENERAL UTILITY NOTES - CITY OF DOVER DEPARTMENT OF PUBLIC WORKS

- THE SITE CONTRACTOR SHALL CONTACT THE CITY OF DOVER PUBLIC WORKS CONSTRUCTION MANAGER AT (302) 736-7025 PRIOR TO THE START OF CONSTRUCTION. A REPRESENTATIVE FROM THE CITY OF DOVER DEPARTMENT OF PUBLIC WORKS MUST OBSERVE AND APPROVE ALL CITY OWNED WATER AND SANITARY SEWER INTERCONNECTIONS AND TESTING. ALL WATER TAPS MUST BE PERFORMED BY A CITY OF DOVER APPROVED CONTRACTOR. THE PROPOSED LOCATION FOR THE WATER CONNECTION MAY NEED TO BE ADJUSTED IN THE FIELD DUE TO CONDITIONS OF THE EXISTING MAIN. POSSIBLE CONDITIONS THAT WOULD REQUIRE TAPPING RELOCATION INCLUDE PROXIMITY TO PIPE JOINTS, OTHER TAPS, CONCRETE ENCASUREMENTS, CONFLICT WITH OTHER UTILITIES AND THE LIKE. TEST HOLES MUST BE PERFORMED BY THE CONTRACTOR TO DETERMINE THE BEST TAPPING LOCATION. THE CITY OF DOVER WILL NOT BE HELD RESPONSIBLE FOR FIELD CONDITIONS REQUIRING ADJUSTMENT OF THE TAPPING LOCATION OR FOR ANY WORK REQUIRED BY THE CONTRACTOR TO MAKE AN APPROPRIATE AND LAWFUL CONNECTION.
- PART II, CHAPTER 180, ARTICLE III, SECTION 180-10 OF THE CODE OF KENT COUNTY REQUIRES THAT "NO PERSON SHALL DISCHARGE OR CAUSE TO BE DISCHARGED ANY STORMWATER, SURFACE WATER, UNCONTAMINATED GROUNDWATER, ROOF RUNOFF, SUBSURFACE DRAINAGE, UNCONTAMINATED NONCONTACT COOLING WATER OR UNPOLLUTED INDUSTRIAL PROCESS WATERS TO ANY SANITARY SEWER." THIS SHALL INCLUDE CONDENSATE. SEC. 110-231 OF THE CITY OF DOVER CODE DEFINES STORM SEWER AS "...ANY SYSTEM USED FOR CONVEYING RAIN WATER, SURFACE WATER, CONDENSATE, COOLING WATER OR SIMILAR LIQUID WASTES, EXCLUSIVE OF SEWAGE." THE CONTRACTOR, DEVELOPER, OWNER AND DESIGNERS SHALL ENSURE DURING CONSTRUCTION THAT NO ILLEGAL DISCHARGES TO THE SANITARY SEWER SYSTEM ARE CREATED WITH THE SITE IMPROVEMENTS.
- ALL WATER AND WASTEWATER UTILITY CONSTRUCTION AND MATERIALS SHALL MEET ALL CITY OF DOVER STANDARDS AND SPECIFICATIONS AS WELL AS CURRENT REQUIREMENTS AND PRACTICES.
- ALL MATERIALS SHALL MEET CITY OF DOVER STANDARDS AND SPECIFICATIONS AND CURRENT REQUIREMENTS.
- ALL EXISTING UTILITIES SHALL BE FIELD VERIFIED BY THE CONTRACTOR PRIOR TO THE START OF CONSTRUCTION.
- ANY EXISTING WATER OR WASTEWATER UTILITY LINES NOT TO BE UTILIZED BY THE PROPOSED PROJECT SHALL BE PROPERLY ABANDONED AT THE MAINS BY THE DEVELOPER / OWNER.
- ALL EXISTING UTILITIES SHALL BE ADJUSTED TO FINAL GRADE IN ACCORDANCE WITH CURRENT CITY OF DOVER REQUIREMENTS AND PRACTICES AND ALL EXISTING UTILITIES SHALL BE REPAIRED OR REPLACED WHEN DEEMED NECESSARY BY THE PUBLIC WORKS DEPARTMENT IN ALL AREAS OF DISTURBANCE ASSOCIATED WITH CONSTRUCTION.
- NO TREES MAY BE PLANTED WITHIN 10 FEET OF WATER AND WASTEWATER UTILITY INFRASTRUCTURE.
- NO STRUCTURES, INCLUDING PERMANENT SIGNAGE, MAY BE LOCATED WITHIN 10 FEET OF WATER AND WASTEWATER UTILITY INFRASTRUCTURE.
- WATER AND WASTEWATER LINES MAY NOT BE LOCATED NEAR ANY POTENTIAL SOURCE OF CONTAMINATION.

DOMESTIC WATER SYSTEM - CITY OF DOVER DEPARTMENT OF PUBLIC WORKS

- ALL WATER MAIN TAPS MUST BE PERFORMED BY A CITY OF DOVER APPROVED CONTRACTOR.
- ALL NONMETALLIC WATER LINES (MAINS AND SERVICES) SHALL BE INSTALLED WITH A TRACER WIRE AND IDENTIFICATION TAPE. THE WIRE SHALL BE A MINIMUM OF 12 GAUGE BLUE COATED SOLID COPPER WIRE, WRAPPED AROUND THE PIPE, AND EXTENDING UP INTO ALL VALVE AND CURB BOXES. THE IDENTIFICATION TAPE SHALL BE 6" WIDE, LAID 1 FOOT ABOVE THE PIPE, WITH THE FOLLOWING TEXT "CAUTION BURIED WATER LINE BELOW".
- ALL WATER MAINS LOCATED WITHIN PUBLIC ROADWAYS SHALL BE OFFERED FOR DEDICATION TO THE CITY OF DOVER AND THEREAFTER WILL BE MAINTAINED BY THE CITY OF DOVER.
- WATER MAINS SHALL HAVE NO LESS THAN FORTY-EIGHT (48) INCHES OF COVER OVER THE TOP OF THE PIPE.
- WATER MAINS SHALL HAVE A MINIMUM 10 FOOT HORIZONTAL AND 18 INCH VERTICAL SEPARATION FROM SANITARY SEWER AND STORM DRAIN WHERE MINIMUM SEPARATION DISTANCES CANNOT BE MAINTAINED. THE OFFICE OF DRINKING WATER AND THE CITY/TOWN ENGINEER MUST SPECIFICALLY APPROVE ANY VARIANCE SUPPORTED BY DATA FROM THE DESIGN ENGINEER.
- ALL WATER MAIN AND APPURTENANCES SHALL CONFORM TO A W.W.A. STANDARDS AND CITY OF DOVER STANDARDS, AND BE CONSTRUCTED OF THE FOLLOWING MATERIALS AND/OR APPROVED EQUAL. CONTRACTOR TO VERIFY THAT ALL MATERIALS USED MEET THE CITY OF DOVER STANDARDS AND SPECIFICATIONS AND CURRENT REQUIREMENTS.
WATER MAINS: 8 INCH DIA. AND LARGER, CEMENT LINED CLASS 52 DUCTILE IRON
GATE VALVES: 8 INCH DIA. AND LARGER, CEMENT LINED CLASS 52 DUCTILE IRON
FITTINGS: CLASS 250 DUCTILE IRON
DRAINING CO. B-82 BREAKAWAY 4-1/2 INCH MINIMUM WITH STEAMER.
NOTE: FIRE HYDRANTS TO BE PLACED AT PROPERTY LINES WHERE POSSIBLE, BUT IN NO CASE SHALL THEY BE MORE THAN 600 FEET APART AS MEASURED ALONG THE CURB LINE.
STREET VALVE BOX: BUFFALO TYPE 3-PIECE
CORPORATION STOP: MUELLER CO. H-15010, H-15000, H-15008, OR H-15013
CURB STOP: MUELLER CO. H-10291, H-15201, OR H-15176
SERVICE FITTINGS: MUELLER CO. H-15403, H-15428, OR H-15451 (NO HOSE CLAMPS/ BARBED FITTINGS OR PACK JOINTS PERMITTED)
UNDERGROUND SERVICE PIPE: 1 INCH AND LARGER, TYPE "K" COPPER PIPE OR SDR 9 POLYETHYLENE TUBING C.T.S. O.D.
CURB BOX: BUFFALO TYPE SERIES 6500-92 BUFFALO TYPE COMPLETE
MINIMUM DEPTH OF COVER: 48"
- HYDRANT CONNECTIONS BY THE CONTRACTOR ARE PROHIBITED. THIS METHOD MAY NOT BE UTILIZED DURING ANY PHASE OF THE PROJECT.
- ANY EXISTING WATER LINES NOT TO BE UTILIZED BY THE PROPOSED FACILITY MUST BE PROPERLY ABANDONED AT THE MAINS IN ACCORDANCE WITH THE CITY OF DOVER STANDARDS AND SPECIFICATIONS AND REQUIREMENTS.
- BOTH THE DOMESTIC AND FIRE SERVICE WATER LINE MUST BE PRESSURE / FLOW TESTED TO THE BLIND FLANGE BY THE CITY OF DOVER PUBLIC WORKS DEPARTMENT. CONTRACTOR TO COORDINATE TESTING AND THE RESULTING WATER OUTAGES OR FIRE WATCHES THAT MAY BE REQUIRED AT THE FACILITY.

SANITARY SEWER SYSTEM - CITY OF DOVER DEPARTMENT OF PUBLIC WORKS

- THE SITE CONTRACTOR SHALL NOTIFY THE CITY OF DOVER DEPARTMENT OF PUBLIC WORKS CONSTRUCTION MANAGER AT 302-736-7025 PRIOR TO THE START OF CONSTRUCTION.
- ANY CONNECTION TO AN EXISTING SANITARY SEWER MANHOLE MUST BE CORE DRILLED AND A WATER TIGHT PIPE TO MANHOLE CONNECTOR USED. THE CONNECTOR MUST BE APPROVED BY THE CITY OF DOVER DEPARTMENT OF PUBLIC WORKS PRIOR TO INSTALLATION.
- ANY EXISTING SANITARY SEWER LINES NOT TO BE UTILIZED BY THE PROPOSED FACILITY MUST BE PROPERLY ABANDONED AT THE MAINS IN ACCORDANCE WITH THE CITY OF DOVER DEPARTMENT OF PUBLIC WORKS SPECIFICATIONS AND REQUIREMENTS.
- ALL SEWER MAINS SHALL BE DESIGNED IN ACCORDANCE WITH THE CITY OF DOVER STANDARDS AND SPECIFICATIONS, ASCE ENGINEERING PRACTICE MANUAL FOR SEWER AND STORM SEWER, AND THE FOLLOWING GUIDELINES. CONTRACTOR TO VERIFY THAT ALL MATERIALS USED MEET THE CITY OF DOVER STANDARDS AND SPECIFICATIONS AND CURRENT REQUIREMENTS.
SANITARY SEWER MAIN: MINIMUM 8 INCHES DIA. PVC SDR 35 FOR 8-15 INCH DIA. AND MAX. COVER OF 12 FEET
PVC SDR 35 FOR 8 INCH THROUGH 15 INCH DIA. AND COVER BETWEEN 12-18 FEET.
DUCTILE IRON PIPE SHALL BE USED WITH A MAX. COVER OVER 18 FEET
SANITARY SEWER LATERAL: MINIMUM 6 INCHES DIA. PVC SDR 35
GRAVITY SEWER FITTINGS: MATCH GRAVITY MAIN MATERIAL
SANITARY SEWER FORCE MAIN: PVC SDR 18 OR CLASS 52 DUCTILE IRON PIPE
FORCE MAIN FITTINGS: CLASS 250 DUCTILE IRON, MECHANICAL JOINT
MANHOLE FRAME AND COVER: EAST JORDAN IRON WORKS, MODEL MHR 1980
LATERAL FRAME AND COVER: EAST JORDAN IRON WORKS, MODEL MHR 1180
ALL NONMETALLIC WASTEWATER LINES (MAINS AND LATERALS) SHALL BE INSTALLED WITH A TRACER WIRE AND IDENTIFICATION TAPE. (TRACER WIRE IS NOT REQUIRED ON GRAVITY MAINS). THE WIRE SHALL BE A MINIMUM OF 12 GAUGE GREEN COATED SOLID COPPER WIRE, WRAPPED AROUND THE PIPE. THE IDENTIFICATION DETECTOR TAPE SHALL BE 6" WIDE, LAID A MINIMUM OF 1' ABOVE THE PIPE, WITH THE FOLLOWING TEXT "CAUTION BURIED SEWER LINE BELOW".

TELE-COMMUNICATION CONSTRUCTION NOTES (FOR REFERENCE ONLY)

- T-1** CONNECT NEW FIBER OPTIC COMMUNICATION LINE TO EXISTING FIBER OPTIC COMMUNICATION LINE. MAINTAIN MINIMUM DEPTH. CONTRACTOR TO FIELD VERIFY DEPTH, SIZE AND LOCATION OF EXISTING FIBER OPTIC LINE WITH UTILITY COMPANY PRIOR TO INSTALLATION. SEE ELECTRICAL PLANS FOR DETAILS.
- T-2** INSTALL 3" CONDUIT WITH FIBER OPTIC LINE FROM EXISTING FIBER OPTIC LINE TO HANDHOLE. MAINTAIN MINIMUM DEPTH.
- T-3** INSTALL HANDHOLE AT LOCATION SHOWN. (EQUIPMENT TO BE SUPPLIED BY UTILITY COMPANY). SEE ELECTRICAL PLANS FOR DETAILS.
- T-4** INSTALL 3" CONDUIT WITH FIBER OPTIC LINE FROM HANDHOLE TO CONNECTION POINT AT BUILDING AS SHOWN. MAINTAIN MINIMUM DEPTH. CONTRACTOR SHALL VERIFY LOCATION AND DEPTH OF EXISTING ELECTRIC SERVICE PRIOR TO INSTALLATION OF FIBER OPTIC LINE. SEE ELECTRICAL PLANS FOR DETAILS.

ELECTRIC CONSTRUCTION NOTES (FOR REFERENCE ONLY)

- E-1** INSTALL PAD MOUNTED PRIMARY SWITCH BOX AT LOCATION SHOWN. (EQUIPMENT TO BE SUPPLIED BY UTILITY COMPANY). PRIOR TO INSTALLATION OF SWITCH BOX, CONTRACTOR SHALL VERIFY LOCATION AND DEPTH OF EXISTING UNDERGROUND TELEPHONE LINES. SEE ELECTRICAL PLANS FOR DETAILS.
- E-2** INSTALL (2) 4" CONDUIT IN CONCRETE ENCASED DUCT BANK FROM PRIMARY SWITCH BOX TO TRANSFORMER. MAINTAIN MINIMUM DEPTH. CABLE TO BE SUPPLIED BY UTILITY COMPANY. PRIOR TO INSTALLATION OF CONDUIT, CONTRACTOR SHALL VERIFY LOCATION OF DEPTH OF EXISTING UNDERGROUND TELEPHONE LINES. SEE ELECTRICAL PLANS FOR DETAILS.
- E-3** INSTALL PAD MOUNTED TRANSFORMER AT LOCATION SHOWN. (EQUIPMENT TO BE SUPPLIED BY UTILITY COMPANY). PRIOR TO INSTALLATION OF TRANSFORMER, CONTRACTOR SHALL VERIFY LOCATION AND DEPTH OF EXISTING UNDERGROUND TELEPHONE LINES. SEE ELECTRICAL PLANS FOR DETAILS.
- E-4** PRIOR TO INSTALLATION OF ELECTRIC CABLE, CONTRACTOR SHALL VERIFY LOCATION AND DEPTH OF EXISTING WATER MAIN. CONTRACTOR SHALL MAINTAIN A MINIMUM OF EIGHTEEN-INCH (18") VERTICAL CLEARANCE BETWEEN THE WATER MAIN AND THE NEW ELECTRIC CABLE AT THE CROSSING.
- E-5** PRIOR TO INSTALLATION OF ELECTRIC CABLE, CONTRACTOR SHALL VERIFY LOCATION AND DEPTH OF EXISTING GAS MAIN. CONTRACTOR SHALL MAINTAIN A MINIMUM OF EIGHTEEN-INCH (18") VERTICAL CLEARANCE BETWEEN THE GAS MAIN AND THE NEW ELECTRIC CABLE AT THE CROSSING.
- E-6** INSTALL (2) 4" CONDUIT IN CONCRETE ENCASED DUCT BANK FROM TRANSFORMER TO HANDHOLE. MAINTAIN MINIMUM DEPTH. SEE ELECTRICAL PLANS FOR DETAILS.
- E-7** INSTALL 4 FT. X 4 FT. HANDHOLE AT LOCATION SHOWN. SEE ELECTRICAL PLANS FOR DETAILS.
- E-8** INSTALL (4) 4" CONDUIT IN CONCRETE ENCASED DUCT BANK FROM HANDHOLE TO CONNECTION POINT AT BUILDING. MAINTAIN MINIMUM DEPTH. SEE ELECTRICAL PLANS FOR DETAILS.
- E-9** TIE INTO EXISTING ELECTRIC SERVICE AND EXTEND NEW UNDERGROUND ELECTRIC SERVICE TO RELOCATED POLE WITH SURVEILLANCE CAMERA AT LOCATION SHOWN. MAINTAIN MINIMUM DEPTH. CONTRACTOR SHALL COORDINATE WITH UTILITY COMPANY PRIOR TO RELOCATED ELECTRIC SERVICE AND POLE. SEE ELECTRICAL PLANS FOR DETAILS.

PROJECT TITLE

DELAWARE TECHNICAL COMMUNITY COLLEGE

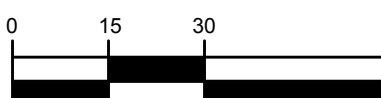
OFFICE OF THE PRESIDENT

ADMINISTRATION BUILDING ADDITION

CAMPUS DRIVE EAST
CITY OF DOVER
KENT COUNTY, DELAWARE

SHEET TITLE

UTILITIES AND GRADING PLAN



SCALE : 1" = 30'

ISSUE	BLOCK	REVISIONS
12	03-05-13	REVISED PLANS PER CITY OF DOVER PUBLIC WORKS COMMENTS DATED 02-19-13
11	02-04-13	REVISED FIRE DEPARTMENT CONNECTION LOCATION
10	01-21-13	REVISED PLANS PER CITY OF DOVER PUBLIC WORKS COMMENTS DATED 11-21-12
9	01-08-13	REVISED PLANS PER CITY OF DOVER PLANNING COMMENTS DATED 12-14-12
8	01-08-13	REVISED PLANS PER DNREC COMMENTS DATED 12-14-12
7	01-08-13	REVISED PLANS PER DELDOT COMMENTS DATED 12-24-12
6	12-17-12	ISSUE FOR PERMIT
5	12-14-12	CD SUBMISSION
4	12-03-12	AAB SUBMISSION
3	11-15-12	REVISED PLANS PER DAC COMMENTS DATED 09-05-12
2	10-19-12	DD SUBMISSION
1	08-31-12	UPDATE PLAN DATE FOR SCHEMATIC DESIGN SUBMISSION
MARK	DATE	DESCRIPTION
LAYER	DATE	DESCRIPTION

PROJECT NO.: 2012025.00

DATE: 08-03-12

SCALE: 1" = 30'

DRAWN BY: R.P.H. PROJ. MGR: J.N.S.

SHEET

C-301

COPYRIGHT 2009