



ADDENDUM TO CONTRACT DOCUMENTS

Date: December 17, 2012

To: Bidders

From: James A. Ament Jr., Assoc. AIA

Copies: Dr. Ileana Smith – DTCC / Campus Director, Owens Campus

Project: DTCC Powerplant Education Facility – Sussex County Airport & Industrial Park – Georgetown, DE

Project Number: BMG Project No. 2012112.00

Subject: **ADDENDUM NO. 4**

NOTICE: Attention is called to the following item(s), effective as of the date above, which shall be added to, deleted from, or changed in the contract documents dated November 19, 2012, and any previously issued addenda, thereby incorporating these items into the contract.

LIST OF ATTACHMENTS

1	SKM-200-1	12/17/12
2	SKM-200-2	12/17/12
3	SKM-200-3	12/17/12

PROJECT MANUAL CHANGES:

Item Description

- 1 Addendum No. 1:
- Project Manual Changes, Item 4 Submittal Procedures, Bullet 3:
 - Clarification; The Contractor shall provide materials and work in accordance with the sustainable procedures and provide the required submittals as outlined in the Project Manual.
 - Project Manual Changes, Item 6 Temporary Facilities and Controls, Bullet 4:
 - Clarification; The Contractor shall provide water in whatever means they desire, as long as it does not delay the project schedule in any way. Once the final water services is connected to the facility, the Contractor may use and pay for water from the services. The water service and future usage payments shall be turned over to the Owner upon Substantial Completion.

- Project Manual Changes, Item 6 Temporary Facilities and Controls, Bullet 5:

Addendum # 4

December 17, 2012

DTCC Powerplant Education Facility – Sussex County Airport & Industrial Park
 Georgetown, DE
 BMG Project No. 2012122.00

Page 2

- Clarification; The Contractor shall provide electric power in whatever means they desire, as long as it does not delay the project schedule in any way. Once the final electric services is connected to the facility, the Contractor may use and pay for power from the services. The electric service and future usage payments shall be turned over to the Owner upon Substantial Completion.
- 2 Horizontal Louver Blinds (122113):
 - Delete 1.2.B.1 in its entirety.
 - Delete 1.5.B in its entirety.
- 3 Metal Lockers (105113):
 - Delete 1.2.B.1 in its entirety.
 - Delete 1.5.B in its entirety.
- 4 Refrigerant Piping (232300):
 - Add 2.1.C to read:
 C. Equipment Drains and Overflows (Condensate Piping).
 1. Copper Tube: ASTM B88 (ASTM B88M), Type K (A), drawn; using one of the following joint types:
 - a. Solder Joints: ASME B16.18 cast brass/bronze or ASME B16.22 solder wrought copper fittings; ASTM B32 lead-free solder, HB alloy (95-5 tin-antimony) or tin and silver.

DRAWING CHANGES:

Item	Description
------	-------------

- | | |
|---|--|
| 1 | A101; Floor Plan: <ul style="list-style-type: none"> • Add plan note pointing to the dashed rectangle on the southwest wall of Classroom 110, adjacent to Lobby 102, to read “CEILING MOUNTED PROJECTION SCREEN”. • Add plan note to countertops on the northeast, northwest and southeast walls of Classroom 110, to read “CONTRACTOR PROVIDE SOLID SURFACE COUNTERTOPS, BRACKETS AND REQ'D BLOCKING”. • Add plan note to desks and chairs in Classroom 110, to read “LOOSE DESKS & CHAIRS BY OWNER”. • Add plan note to Educational Lab 113, to read “LOOSE FURNITURE, & EQUIPMENT BY OWNER”. • Delete the number “18” in the plan note for the metal lockets in Lobby 102, Substitute the number “24”. |
| 2 | M200; Mechanical Piping Plan: <ul style="list-style-type: none"> • Add enlarged Classroom Piping Plan 1 as shown on drawing SKM-200-1, dated 12/17/12. • Add enlarged Office Area Piping Plan 1 as shown on drawing SKM-200-2, dated 12/17/12. • Add Comment note No. 3 to AC-5 thru AC-8 and AC-10, in the Ductless Split Indoor Unit schedule, as indicated in drawing SKM-200-3, dated 12/17/12. • Add Comment note No. 4 to Comment noted for the Ductless Split Indoor Unit schedule, as indicated in drawing SKM-200-3, dated 12/17/12. • Add Comment note No. 4 to AC-9, in the Ductless Split Indoor Unit schedule, as indicated in drawing SKM-200-3, dated 12/17/12. |

Addendum # 4

DTCC Powerplant Education Facility – Sussex County Airport & Industrial Park
Georgetown, DE
BMG Project No. 2012122.00

December 17, 2012

Page 3

3 P400; Riser Diagrams:

- Add note to riser diagram 3, Compressed Air Riser Diagram, to read “Air Compressor, by Owner, final installation and connection by Contractor, pointing to the “Air Compressor” on the right end of the diagram.

END OF ADDENDUM NO. 4

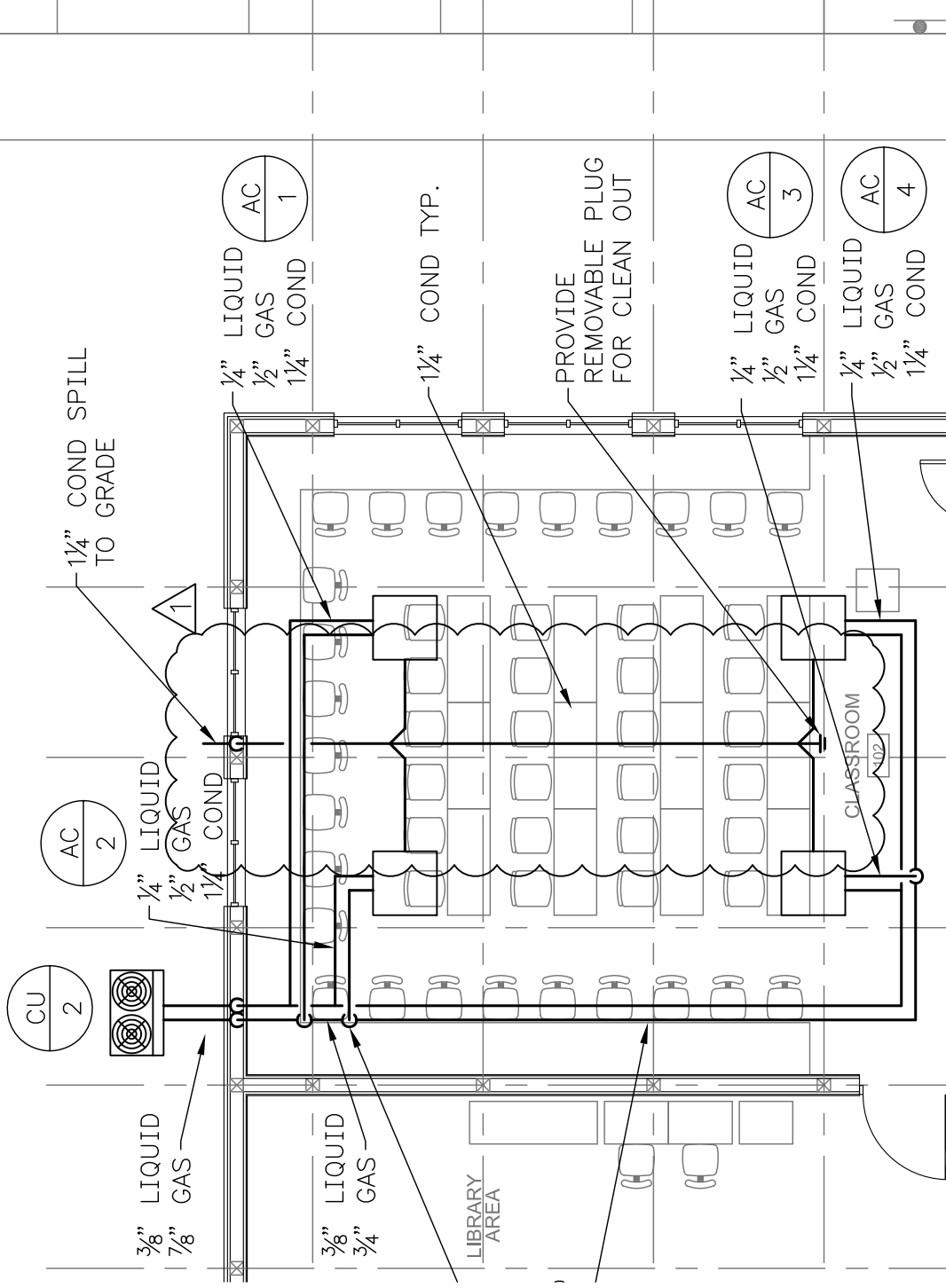
cc:

All Bidders

DTCC

MyMarketPlace (via DTCC)

201211200ci-Addm4.doc



CLASSROOM PIPING PLAN

1
SKM-200-1
SCALE: 1/8" = 1'-0"

SKM-200-2



ARCHITECTURE
PLANNING

Dover

309 S Governors Ave
Dover, DE 19904
P: 302.734.7950
F: 302.734.7965

www.beckermorgan.com

DELAWARE
TECHNICAL COLLEGE
COMMUNITY

DUCTLESS SPLIT INDOOR UNIT

TAG	MANUFACTURER	MODEL NO.	COOLING (BTU)	SENSIBLE (BTU)	HEATING (BTU)	REFRIG. TYPE	UNIT TYPE	WEIGHT (LBs)	ELECTRICAL			COMMENTS
									(V/PH/HZ)	MCA	MOCP	
AC 5	DAIKIN AC	FXZQ12M7VJU	12000	8000	14000	R410A	4 WAY CASSETTE	48	208--230/1Ø/60	.8	15	1,2,3
AC 6	DAIKIN AC	FXZQ07M7VJU	7500	5900	8700	R410A	4 WAY CASSETTE	48	208--230/1Ø/60	.8	15	1,2,3
AC 7	DAIKIN AC	FXZQ07M7VJU	7500	5900	8700	R410A	4 WAY CASSETTE	48	208--230/1Ø/60	.8	15	1,2,3
AC 8	DAIKIN AC	FXZQ12M7VJU	12000	8000	14000	R410A	4 WAY CASSETTE	48	208--230/1Ø/60	.8	15	1,2,3
AC 9	DAIKIN AC	FXAQ07PVJU	7500	6400	8500	R410A	WALL MOUNTED	26	208--230/1Ø/60	.4	15	1,2,4
AC 10	DAIKIN AC	FXZQ07M7VJU	7500	5900	8700	R410A	4 WAY CASSETTE	48	208--230/1Ø/60	.8	15	1,2,3

COMMENTS:

1. PROVIDE DISCONNECT SWITCH.
2. PROVIDE WIRED TYPE CONTROLLER.
3. PROVIDE OUTSIDE AIR BUCHWORK CONNECTION OPTIONS.
4. PROVIDE CONDENSATE PUMP.

MECHANICAL
SCHEDULES

ADDENDUM No. 4

PROJECT: 2012112.00

DATE: 12/17/12

SCALE: NONE

DRAWN BY: MLF

SKM-200-3

COPYRIGHT © YEARS

\$FILES\$
\$DATES\$