

Addendum #3

Date: July 2, 2015
Project: Campus Lighting Improvement
Contract: FD-15-013

The work herein shall be considered part of the bid documents for the referenced project and carried out in accordance with the following supplemental instructions issued in accordance with the Contract Documents without change in Contract Sum or Contract Time. Acknowledge receipt of addendum on the bid form as indicated.

Clarifications:

1. None

Changes to Specifications:

1. None.

Changes to Drawings:

1. Drawing E-101 – Drawing has been reissued to clarify scope based on contractor questions.

General Information:

1. Clarification of the project:
 - Scope of work is limited to the replacement of pole light fixtures and installation of supplemental foundations, poles, and fixtures in parking lots, roadways, and building perimeters on the campus as indicated in Exhibit B – Drawings.

Questions and Answers:

Question: Are the existing poles being retained?

Answer: Unless otherwise noted on drawings, all poles shall be retained and retrofitted with new lights. New poles shall be provided where indicated in drawings.

Question: Is the project funded?

Answer: The project is funded by the State of Delaware. Minor Capital improvement funds have been budgeted for this project.

Question: Will the areas of work be disturbed by traffic, during construction?

Answer: The Planning and Construction Department will coordinate with the Public Safety Department to secure work areas during construction. Contractor is responsible for protecting all workers, including all sub-contractors from adjacent roadways by securing the project site as necessary.

Question: When does the academic school year officially start?

Answer: The school year will start in the first week of September 2015, however students will return to campus on the last week of August 2015.

Question: Will space be provided for storage of construction supplies and tools?

Answer: An area will be provided for storage.

Question: Drawing E101 at M.Evers Hall shows two new wall packs to use the existing circuit. Can the new conduit be surface mount on the outside of the building? If not will it have to ran inside the building are there drop ceiling for route for the new wiring?

Answer: The new conduit can be surface mounted to the outside of the building. Conduit shall be galvanized rigid metal conduit, properly supported, and adequately fastened to the existing building construction.

Question: At the tennis court are they show a new type fixture and pole. Need location where it be will fed from.

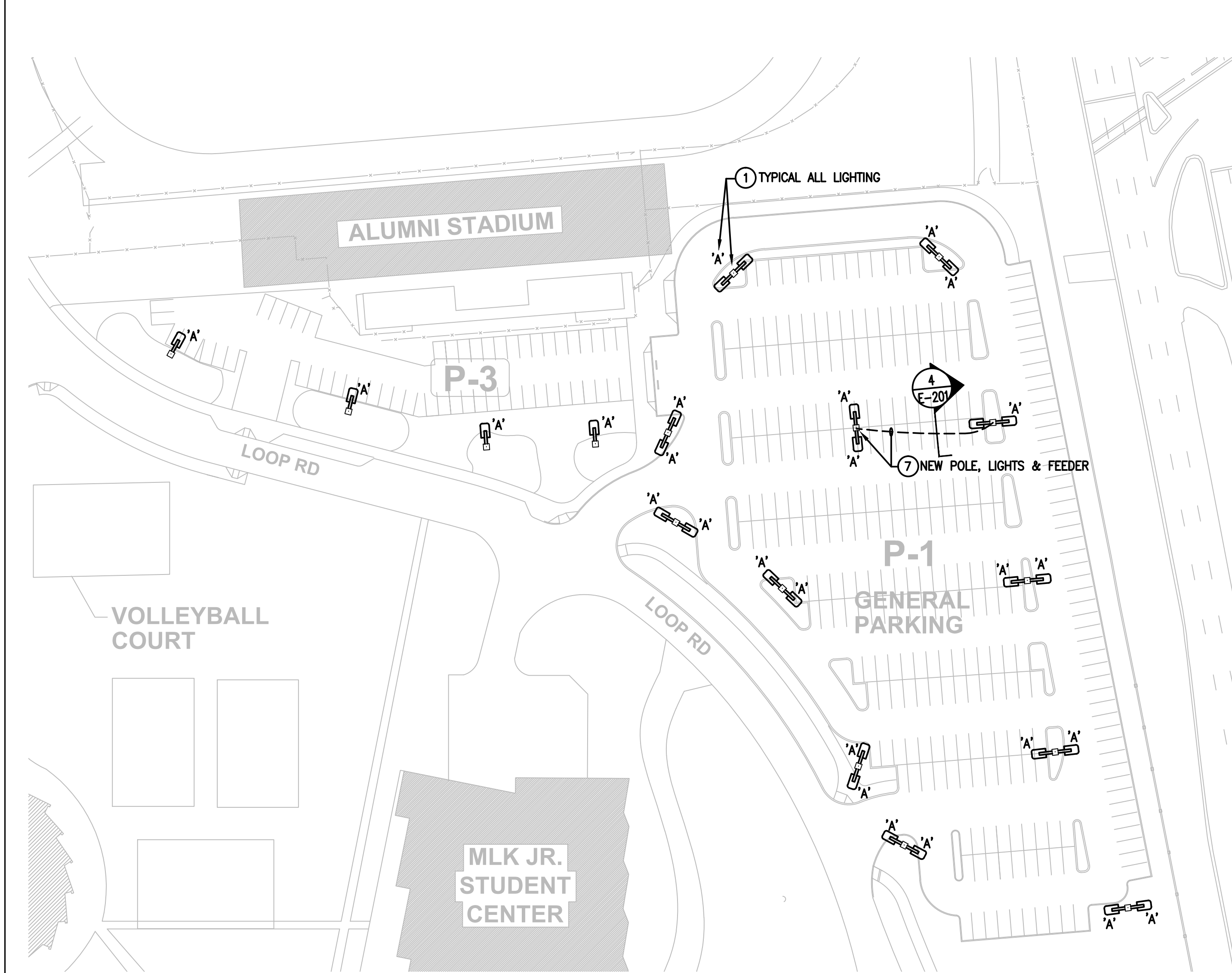
Answer: Refer to attached drawing E-101 for source and diagrammatic conduit path. Install in accordance with detail 5/E-201.

Subcontractor List:

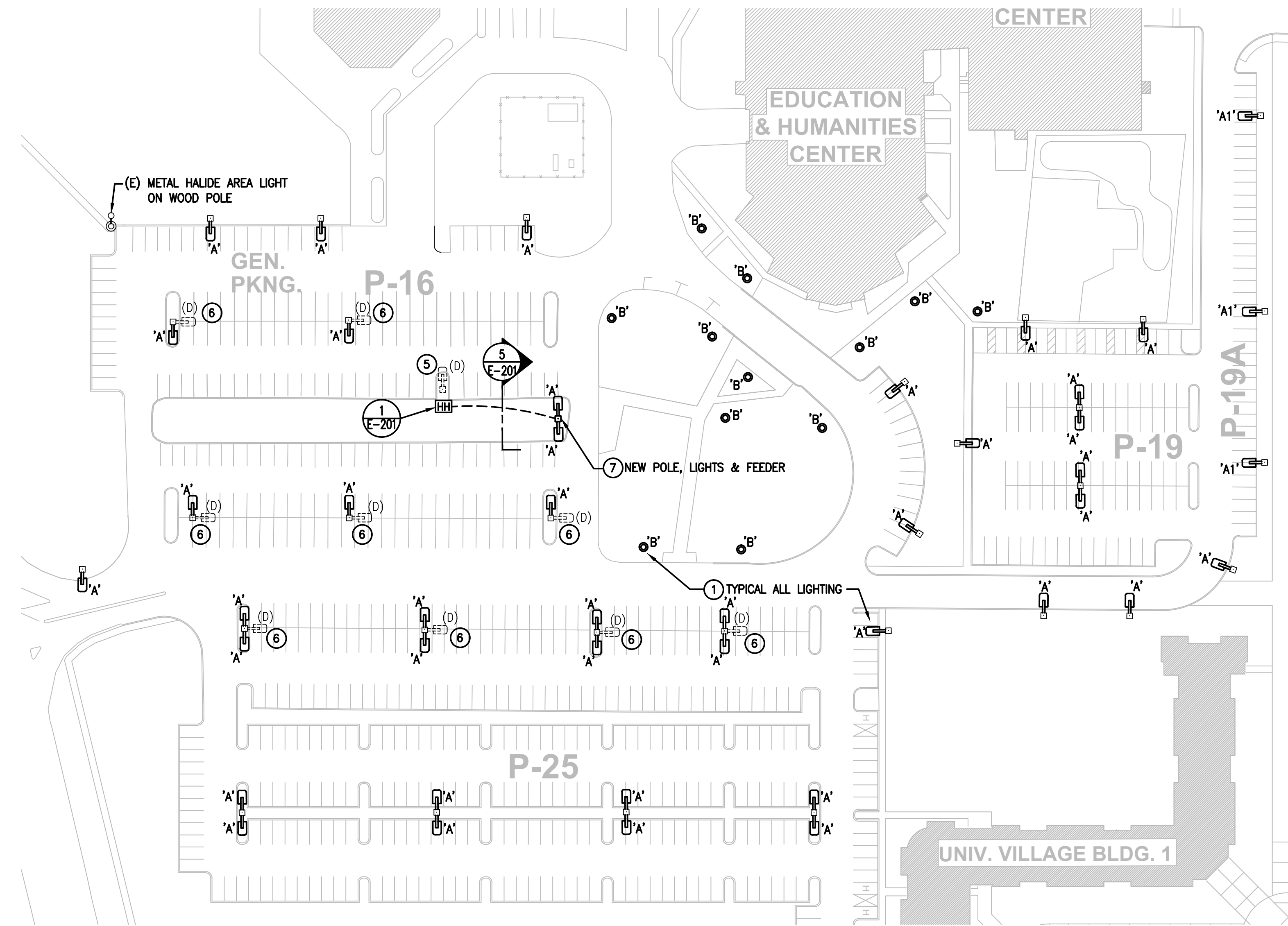
Subcontractors List section of the bid form shall not be left blank for any reason. Noncompliance may result in a rejection of submitted bid. If bidding contractor is doing the work in the place of a subcontractor, indicate accordingly on said form. The following subcontractor categories have been established and shall be reflected in each bid:

1. Demolition
2. General Trades
3. Masonry
4. Concrete
5. Electrical
6. Painting
7. Site work

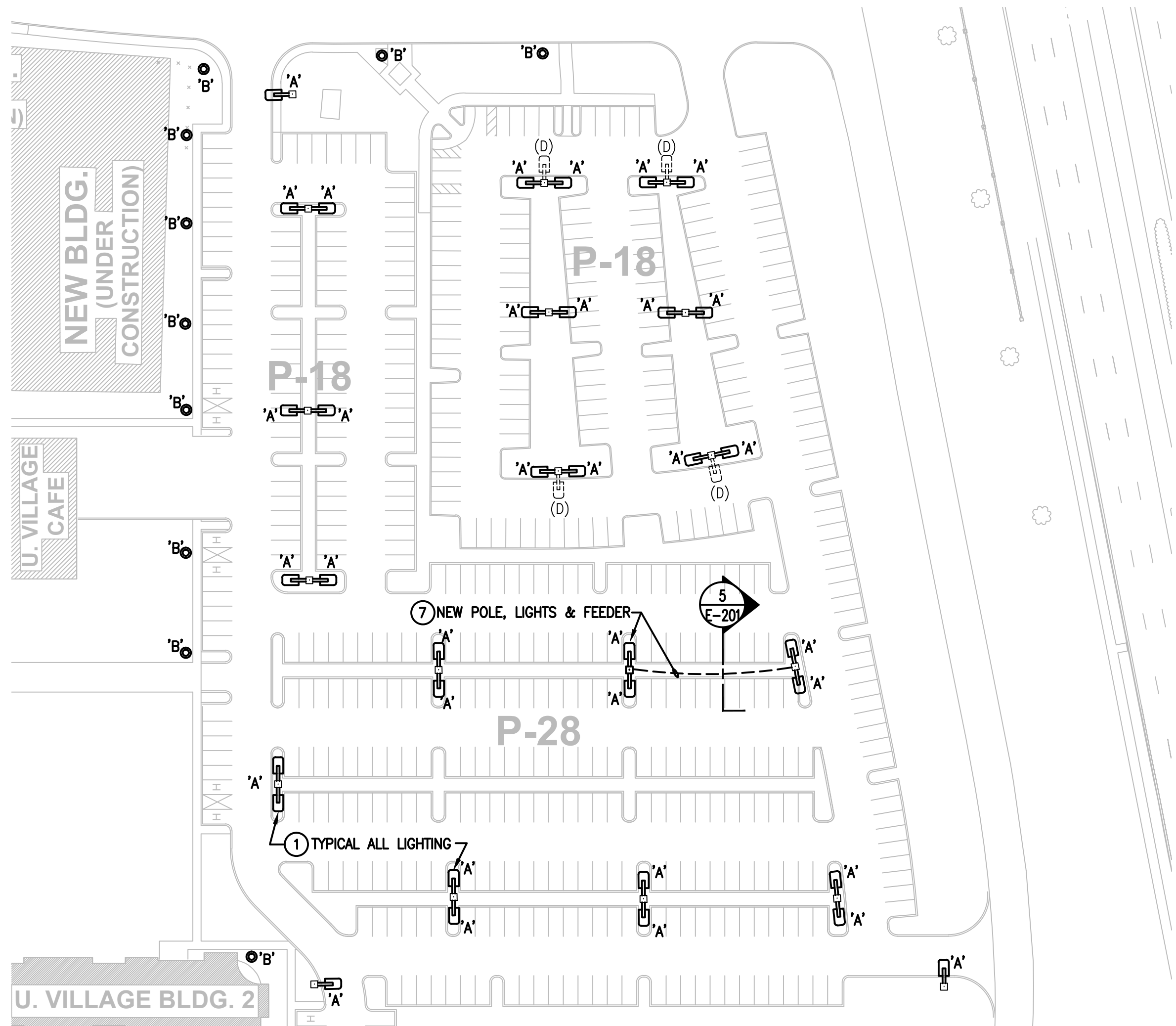
END



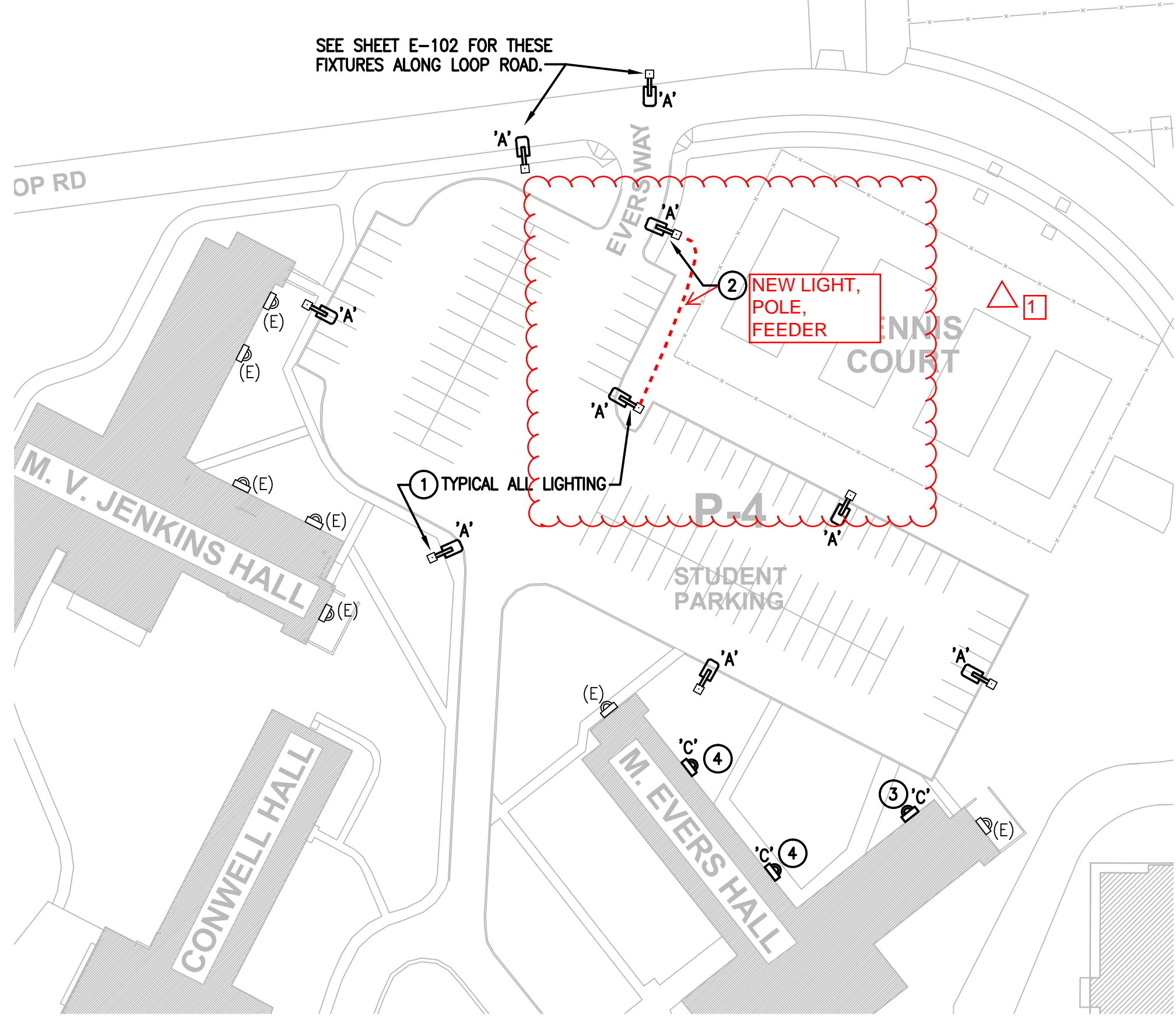
1 LIGHTING PLAN – LOT P-1 & 3
E101 SCALE: 1/64"=1'-0"



2 LIGHTING PLAN – LOTS P-16,19&25
E101 SCALE: 1/64"=1'-0"



3 LIGHTING PLAN – LOTS P-18 & 28
E101 SCALE: 1/64"=1'-0"



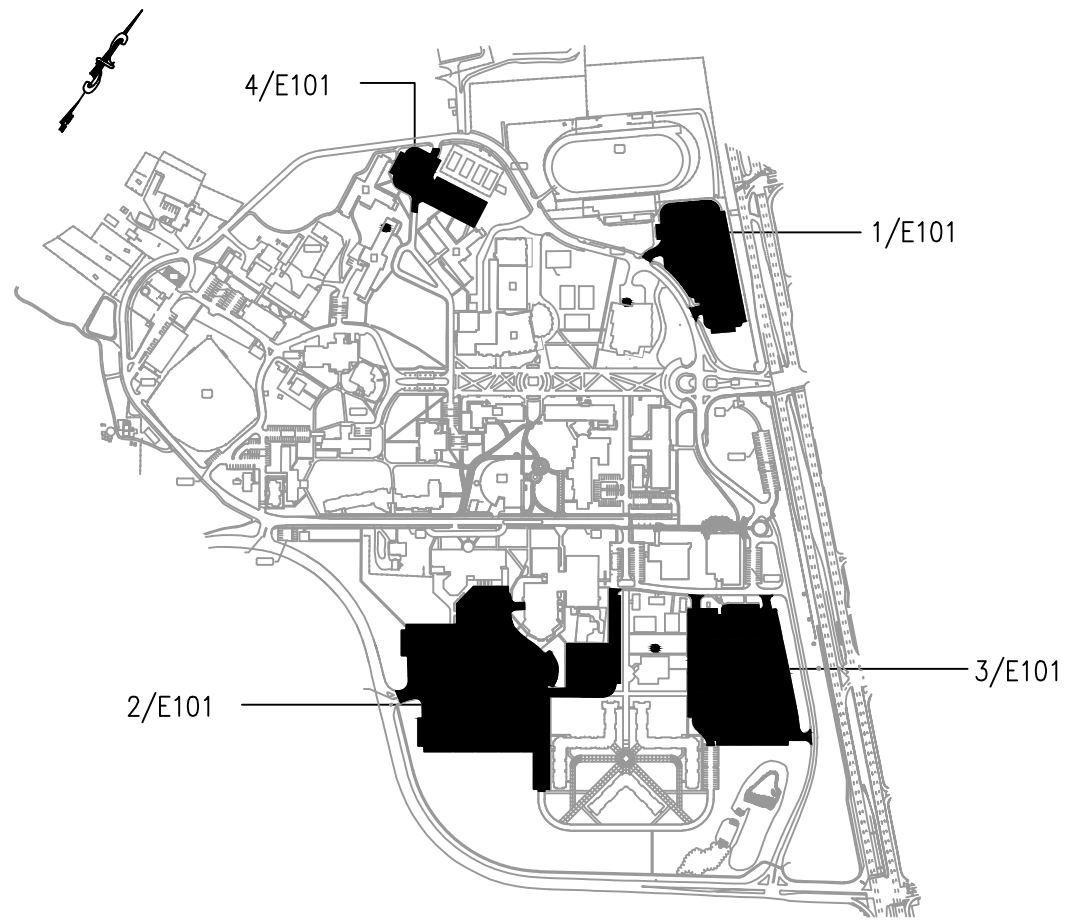
4 LIGHTING PLAN – LOT P-4
E101 SCALE: 1/64"=1'-0"

GENERAL NOTES:

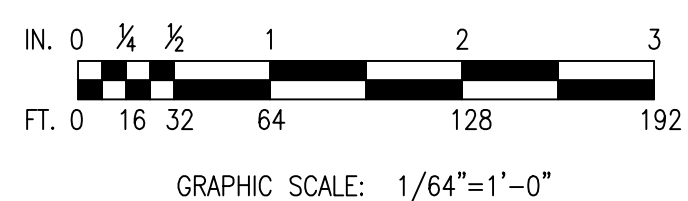
1. CONTRACTOR SHALL VERIFY ALL EXISTING CONDITIONS PRIOR TO PERFORMING ANY WORK.
2. CONDUIT ROUTING SHOWN IS DIAGRAMATIC. CONTRACTOR SHALL FIELD ROUTE UNDERGROUND CONDUIT AS NECESSARY. COORDINATE WITH CIVIL DRAWINGS FOR EXACT ROUTING OF UNDERGROUND CONDUITS.
3. CONTRACTOR SHALL BE RESPONSIBLE FOR ALL WIRING, CONDUITS, PULL BOXES, HAND-HOLES AND TESTING NECESSARY TO ENSURE A FULLY OPERATIONAL SYSTEM.
4. COORDINATE WITH OWNER (DELAWARE STATE UNIVERSITY) FOR EXACT LOCATION OF EXISTING PARKING LOT PANELS, HANDHOLES AND JUNCTION BOXES FEEDING EXISTING PARKING LOT LIGHTS.
5. LIGHTING LAYOUTS ARE DESIGNED BASED ON TYPE-4 LIGHTING DISTRIBUTION PATTERNS. CONTRACTOR SHALL ORIENT EACH FIXTURE IN FIELD AFTER INSTALLATION, PER SPECIFIED DISTRIBUTION PATTERN AND PER MANUFACTURERS RECOMMENDATION TO ACHIEVE MAXIMUM ILLUMINATION AS INTENDED.
6. ALL PARKING LOT POLE LIGHTING ARE UTILIZING EXISTING POLES AND BASES UNLESS OTHERWISE NOTED.
7. ALL TYPE 'A' AND TYPE 'B' LIGHTING FIXTURES WILL BE CONTROLLED BY IT'S OWN INTEGRAL PHOTO-CELL AS SPECIFIED IN.
8. FOR LIGHT FIXTURES & POLES TO BE DEMOLISHED, DISCONNECT AND REMOVE ASSOCIATED CONDUIT BACK TO THE NEAREST ADJACENT JUNCTION BOX OR DEVICE. TRACE OUT AND VERIFY EXISTING CIRCUITS FOR PARKING LOT/ROADWAY LIGHTING TO REMAIN. PROVIDE SPLICES, WIRING, AND CONDUIT AS REQUIRED TO MAINTAIN OPERATION AFTER REMOVAL OF ADJACENT DEVICES.
9. TRACE OUT ALL EXISTING WIRING TO BE DEMOLISHED FROM THE PROJECT AREAS. ALL EXISTING WIRING TO BE DEMOLISHED SHALL BE REMOVED TO IT'S POINT OF ORIGIN.
10. THE CONTRACTOR SHALL PROVIDE CAPS, COVERS AND PLUGS FOR ALL EXISTING PULL BOXES, JUNCTION BOXES AND PANELS WITHIN THE PROJECT BOUNDARIES.
11. ELECTRICAL CONTRACTOR NEEDS TO ENLIST AN UNDERGROUND UTILITY LOCATING FIRM TO LOCATE ALL UG UTILITIES AND LIGHTING CONDUITS PRIOR TO ANY EARTHWORK. TRACE BACK TO THEIR SOURCE OF POWER TO DE-ENERGIZE THEM, AND INSURE THAT THE ADDITION OF FIXTURES TO CIRCUITS DOES NOT EXCEED THEIR CIRCUIT CAPACITY. IF IT DOES, THE CONTRACTOR MUST INFORM THE ENGINEER. ALL EXISTING LIGHTING TO REMAIN MUST MAINTAIN ELECTRICAL CONTINUITY FROM FIXTURE TO FIXTURE.

SHEET NOTES:

- 1 FURNISH AND INSTALL NEW LUMINAIRE USING EXISTING POLE AND BASE. EXTEND EXISTING WIRING IF NECESSARY. ORIENT FIXTURE IN FIELD FOR PROPER ILLUMINATION. REFER TO LIGHTING FIXTURE SCHEDULE, SHEET E-101 FOR ADDITIONAL INFORMATION.
- 2 FURNISH AND INSTALL NEW POLE & LUMINAIRE TYPE 'A'. RE-USE EXISTING FEEDER AND EXTEND FEEDER IF NECESSARY. CONTRACTOR TO FURNISH AND INSTALL NEW POLE BASE. REFER TO LIGHT POLE FOUNDATION DETAIL 3, FOR NON-PAVED AREAS, SHEET E-201.
- 3 DISCONNECT AND REMOVE EXISTING METAL HALIDE WALL PACK AND REPLACE WITH NEW TYPE 'C' USING SAME FEEDER.
- 4 FURNISH AND INSTALL NEW TYPE 'C' WALL PACK AT SAME HEIGHT AS EXISTING WALL PACKS. EXTEND BRANCH CIRCUIT WIRING TO NEW TYPE 'C' FIXTURES. NEW WALL PACKS, TYPE 'C', TO UTILIZE EXISTING LIGHTING CONTROLS.
- 5 DISCONNECT AND REMOVE EXISTING POLE, LIGHT & CONCRETE BASE. CUT EXISTING CONDUIT AND ABANDONED IN PLACE. CONDUIT SHOULD BE CUT 6" BELOW GRADE SO CONDUIT IS NOT A HAZARD. DISCONNECT FEEDER AT OTHER END AND PULL EXISTING WIRING OUT OF CONDUIT. SEE REFER TO DETAIL 5, SHEET E-201.
- 6 DISCONNECT AND REMOVE EXISTING METAL HALIDE LIGHT FIXTURE. PAINT AND SEAL ANY EXPOSED HOLES. MOUNT NEW TYPE 'A' FIXTURE ON EXISTING POLE IN DIRECTION SHOWN. EXTEND EXISTING FEEDER TO NEW FIXTURE.
- 7 FURNISH AND INSTALL NEW POLE & LUMINAIRE TYPE 'A'. CONTRACTOR TO FURNISH AND INSTALL NEW CONCRETE POLE BASE. REFER TO LIGHT POLE FOUNDATION DETAIL 7 FOR PAVED AREAS, SHEET E-201. PROVIDE LIGHTING FEEDER AS SHOWN. PROVIDE 2#10 AWG CONDUCTORS AND 1#10 AWG GROUND IN 3/4" DIRECT-BURIED PVC CONDUIT. TRENCH ACROSS PARKING LOT MACADAM. FIELD ROUTE CONDUITS AT 36" BELOW GRADE (MINIMUM). REFER TO DETAIL 5, SHEET E-201. CONTRACTOR TO MAKE SURE THAT POLE & POLE FOUNDATION IS CENTERED ON THE (4) PARKING SPACE LINES.



KEY PLAN
NOT TO SCALE



DEDC
ENGINEERING / DESIGN / CONSULTING
www.dedc-eng.com

315 South Chapel St.
Newark, DE 19711
Phone: (302) 738-7172

Delaware State University
Making our mark on the world

DELAWARE STATE UNIVERSITY
MAIN CAMPUS
1200 NORTH DUPONT HIGHWAY
DOVER, DELAWARE 19901

CONTRACT # FD-15-013
DEDC PROJ.# 15P070

R E V I S I O N S						PROJECT TITLE: CAMPUS LIGHTING IMPROVEMENTS					
REV.	REVISIONS	RVSD	CHCKD	APRVD	DATE	PARTIAL SITE PLANS – PARKING LOT LIGHTING–P1, P3, P4, P16, P18, P19, P25					
1	REVISED PER ADDENDUM #3 - 7/2/2015					SCALE		AS NOTED	DATE	REVISION NO.	0
						DRAWN BY		EML	05/08/15	E–101	
						CHECKED BY		DEDC	05/18/15		
						APPROVED BY		DEDC	05/18/15		