

**STRUCTURAL DATA RECORD****Sufficiency Rating: 83.0****IDENTIFICATION**

Bridge ID: 1748S059	(2) District: 01	(3) County: 3
Inventory Route:		(4) Place Code: 77580
(A) On/Under: 1	(B) Highway Type: 1	(C) Service Lvl: 1
(D) Route No: 00095	(E) Direction: 0	
6A) Features Intersected: SR 4 & SR 48		6B) Critical: *
(7) Facility Carried: I 95 SB		
(9) Location: SOUTH WILMINGTON VIADUCT		11) Km. Point: 8.420 mi
16) Latitude: 39^44'26.27"	17) Longitude: 75^33'44.99"	
98) Border Bridge Code: NA	99) Border Br. Str. No.: NA	

**STRUCTURE TYPE AND MATERIAL**

43A) MAIN SPAN MATERIAL: 3		43B) DESIGN TYPE: 02
44A) APPR. SPAN MATERIAL: NA		44B) DESIGN TYPE: NA
45) Main Spans: 34	46) Approach Spans: 0	
107) Deck Type: 1		
108A) Wearing Surface: 3	108B) Membrane: 0	108C) Deck Protection: 0
Pier 1: 33	Pier 2: NA	Pier Ftg. 1: NA
Abut 1: 1	Abut 2: NA	Abut Ftg. 1: NA
		Pier Ftg. 2: NA
		Abut Ftg. 2: NA

**NAVIGATION DATA**

38) Navigational Control: N	39) Vertical Clearance: 0.0 ft	40) Horizontal Clearance: 0.0 ft
111) Pier Protection: !	116) Lift Br. Vert. Clr: 0.0 ft	

**AGE AND SERVICE**

19) Detour Length: 5 mi	27) Year Built: 1964	
28) No. of Lanes:	A) On Bridge: 2	B) Under Bridge: 18
29) ADT: 42134	30) Year of ADT: 2012	
42) Type of Service:	A) On Bridge: 6	B) Under Bridge: 1
106) Year Reconst.: 1980	109) % Truck ADT: 11	

**CLASSIFICATION**

12) Base Hwy. Network: 1	13A) LRS Inv. Rte: 0000000059	13B) LRS Subroute No.: 00
20) Toll Facility: 3	21) Maintenance: 1	22) Owner: 1
26) Functional Class: 11	37) Historical: 5	100) Defense Highway: 1
101) Parallel Str.: L	102) Direction: 1	103) Temp. Str.: 1
104) NHS: 1	105) Fed. Lands Highway: 0	110) Nat. Truck Network: 1
112) NBIS Length: Y		

**LOAD RATING AND POSTING**

31) Design Load: 6	41) Oper. Status: A	Rating Date: 1/1/1901
63) Oper. Rating Method: 1	64) Operating Rating: 81.0	
65) Inv. Rating Method: 1	66) Inv. Rating: 47.9	70) Bridge Posting: 5
Reason of Posting: NA	Date of Resolution: NA	Rating Analysis Req'd: NA
S335: 0	S437: 0	T330: 0
T435: 0	T540: 0	

**PROPOSED IMPROVEMENTS**

75) Type of Work: NA	76) Length of Imp.: NA
94) Bridge Cost: NA	95) Roadway Cost: NA
96) Total Cost: NA	97) Year of Cost Est.: NA
114) Future ADT: 48965	115) Year of Future ADT: 2031

**CONTRACT INFORMATION**

Contract 1: 6403004	Contract 2: 6908003	Contract 3: 7210006
Contract 4: 8709101	Contract 5: -1	Contract 6: -1

**INSPECTION RECORD**

90) Inspection Date: 3/28/2013  
 92A) FC Frequency: NA  
 92B) UW Frequency: NA  
 92C) SI Frequency: NA  
 Element Frequency: 24 months  
 UBIV Required: N  
 Boat: N

91) Frequency: 24 months  
 93A) FC Insp. Date: NA  
 93B) UW Insp. Date: NA  
 93C) SI Date: NA  
 Elem. Insp. Date: 3/28/2013  
 UBIV Days: NA  
 Tidal: N

Next Inspection: 3/28/2015  
 Next FC Insp.: NA  
 Next UW Insp.: NA  
 Next SI: NA  
 Next Elem Insp.: 3/28/2015  
 Inspection Zone: 99  
 GPS: Y

**CONDITION**

58) Deck: 7  
 61) Channel: N  
 62) Culvert: N

59) Superstructure: 6  
 Paint Condition: 4  
 Paint Priority: 92.58

60) Substructure: 6

**APPRAISAL**

36) Traffic Sfty Feat.:  
 A) Bridge Rail: 1  
 D) Approach Rail Ends: 1  
 67) Structure Evaluation: 6  
 71) Waterway Adequacy: N  
 113) Scour Critical Evaluation: N

B) Transition: 1  
 68) Deck Geometry: 6  
 72) Approach Rdwy Alignment: 8

C) Approach Rail: 1  
 69) Underclearance: 4  
 Scour Analysis Date: NA

**GEOMETRIC DATA**

32) Appr. Rdwy Width (w/ Shldrs): 38.00 ft  
 34) Skew: 99^ 0' 0"  
 48) Length Maximum Span: 137.47 ft  
 50) Curb or Sidewalk:  
 51) Width Curb to Curb: 38.00 ft  
 53) Minimum Vertical Clearance Over Bridge Roadway: 17.25 ft  
 54) Vertical Underclearance:  
 55) Lateral Underclearance:  
 56) Lateral Underclearance - Minimum Left: 11.00 ft

35) Structure Flared: 1  
 49) Structure Length: 2,531.00 ft  
 A) Left: 0.00 ft  
 52) Deck Width o/o: 42.20 ft

33) Median: 1  
 B) Right: 0.00 ft  
 B) Minimum: 14.80 ft  
 B) Minimum: 9.10 ft

**PAST INSPECTION**

Inspection Date: 3/28/2013 Type: 1

Inspector: Pontis

**INSPECTION NOTES**

Inspected by: PENNONI: SON (TL,I,P,U)/LAA  
 (I,P,U)/TJP (I,P,U)/ JRQ (I,P,U), CWM (I,P,U)  
 IN THE REPORT, THE SPANS ARE REFERRED TO AS  
 THE FOLLOWING: SPAN 1 = SPAN 27, SPAN 2 = SPAN  
 28, SPAN 3 = SPAN 29 THROUGH SPAN 34 = SPAN  
 60. THE BRIDGE PREVIOUSLY WAS NOTED AS HAVING  
 FCM INSPECTION DATES. NO FCM'S WERE OBSERVED,  
 DATES WERE CHANGED TO NA. ADDITIONAL NOTES:  
 SPAN 31: LIGHT POLE ATOP W. PARPAET W/ LOOSE  
 HANDHOLE COVER (MISSING 1 SCREW). SPAN 33:  
 LIGHT POLE ATOP W. PARAPET W/ LOOSE HANDHOLE  
 COVER (MISSING 1 SCREW). SPAN 36: LIGHT POLE  
 ATOP W. PARAPET W/ LOOSE HANDHOLE COVER AND 8"  
 HIGH X 3" WIDE X 3/4" DEEP PEDESTAL SPALL ON  
 THE NORTHEAST CORNER. SPAN 39: LIGHT POLE ATOP  
 W. PARAPET W/ SPALLED PEDESTAL & CRACKED BASE  
 PLATE @ NE ANCHOR BOLT. SPAN 42: PIER 42, COL  
 2 HANDHOLE/JUNCTION BOX COVER IS DAMAGED. SPAN  
 43: MISSING JUNCTION BOX COVER ON W. PARAPET.  
 TYP JUNCTION BOX COVER HAS LOOSE AND/OR  
 MISSING FASTENERS. SPAN 52: MISSING 1 ANCHOR  
 BOLT COVER ON LIGHT POST ON W. PARAPET. SPAN  
 56: MISSING 2 ANCHOR BOLT COVERS ON LIGHT POLE  
 BASE ON W. PARAPET. W. PARAPET JUNCTION BOX  
 COVER AT S END IS MISSING 2 OF 4 SCREWS. SPAN  
 59: MISSING JUNCTION BOX COVER ON W. PARAPET  
 LIGHT POLE. W. PARAET JUNCTION BOX COVER PLATE  
 MISSING 3 OF 4 SCREWS. COVER IS SECURE.  
 MAINTENANCE ITEMS: REPAIR/REPLACE HANDHOLE  
 JUNCTION BOX COVERS IN PARAPET & PIER 42.  
 CLEAN/FLUSH SCUPPERS & DOWNSPOUTS.  
 REPAIR/REPLACE CLOGGED & LEAKING DECK JOINTS.  
 REPAIR DELAMS & SPALLS IN SUBSTRUCTURE UNITS.  
 REPAIR SPALLS & WIDE CRACKS IN PARAPETS.  
 REPAIR DAMAGED/LOOSE SOUNDWALL PANELS.

REPAIR/RESET EXPANSION BEARINGS. SEAL  
CRACKS/SPALLS IN SOFFIT.

**BRIDGE NOTES**

NBI DONE BY: JASON BAUER & DMJM NOTE: SCALE FACTORS ENTERED BY GRD ON 11/14/07, DO NOT  
CHANGE OR ERASE.... NOTE: BRIDGE WAS REMOVED FROM THE FRACTURE CRITICAL INSPECTION LIST  
SINCE THE BRIDGE DDOES NOT HAVE STEEL PIER CAPS. JEA 9/11/13

**PONTIS DATA**

Elements	ID	ENV	UNITS	TOTAL	CS1	CS2	CS3	CS4	CS5	Comments
Concrete Deck - Protected w/ Rigid Overlay	22	4	(SF)	106993	0	106993	0	0	0	For Notes See MSPE Report
Drains/Downspouts/Scuppers	65	4	(EA)	32	8	6	18	0	0	For Notes See MSPE Report
Painted Steel Open Girder/Beam	107	3	(LF)	16178	11477	4461	240	0	0	For Notes See MSPE Report
Reinforced Concrete Column or Pile	205	3	(LF)	1425	1387	30	8	0	0	For Notes See MSPE Report
Reinforced Concrete Abutment	215	3	(LF)	42	40	0	2	0	0	For Notes See MSPE Report
Reinforced Concrete Pier Cap	234	3	(LF)	1474	1278	84	112	0	0	For Notes See MSPE Report
Strip Seal Expansion Joint	300	4	(LF)	1516	126	1390	0	0	0	For Notes See MSPE Report
Moveable Bearing (roller, sliding, etc.)	311	4	(EA)	217	185	29	3	0	0	For Notes See MSPE Report
Fixed Bearing	313	4	(EA)	217	216	1	0	0	0	For Notes See MSPE Report
Reinforced Conc Approach Slab w/ or w/o AC Ovly	321	4	(EA)	1	0	1	0	0	0	For Notes See MSPE Report
Bridge Railing - Reinforced Concrete	331	4	(LF)	5055	3019	1377	659	0	0	For Notes See MSPE Report
Bridge Railing - Metal Coated	334	4	(LF)	1121	609	382	117	13	0	For Notes See MSPE Report
Steel Fatigue	356	1	(EA)	1	1	0	0	0	0	For Notes See MSPE Report
Deck Cracking	358	1	(EA)	1	1	0	0	0	0	For Notes See MSPE Report
Soffit (or Under Surface) of Concrete Deck or Slab	359	1	(EA)	1	0	1	0	0	0	For Notes See MSPE Report
Section Loss	363	1	(EA)	1	1	0	0	0	0	For Notes See MSPE Report
Painted Steel Diaphragm	381	3	(EA)	784	99	671	14	0	0	For Notes See MSPE Report
Reinforced Concrete Wingwalls	390	2	(LF)	24	24	0	0	0	0	For Notes See MSPE Report

**Total Elements:** 18

## DELAWARE DEPARTMENT OF TRANSPORTATION

### *Bridge Management Section MultiSpan PONTIS Element Report for Span No. 1*

**Bridge ID:** 1748S059

**Inspection Date:** 3/28/2013

**Description:** Span 27S (Pier 26S to  
Pier 27S)

ELEM	ENV	DESCRIPTION	UNITS	TOTAL	CS1	CS2	CS3	CS4	CS5	COMMENTS
22	4	P Conc Deck/Rigid Ov	(SF)	106993	0	106993	0	0	0	CS2: (106993 SF) Typical: Wear w/ exp. aggregate thruout and accum. of debris in gutterline.
65	4	Drainage	(EA)	0	0	0	0	0	0	0
300	4	Strip Seal Exp Joint	(LF)	46	0	46	0	0	0	CS2: (46 LF) Packed w/ debris in shoulders and sunken (up to 3-1/4") or debonded areas.
321	4	R/Conc Approach Slab	(EA)	0	0	0	0	0	0	0
107	3	Paint Stl Opn Girder	(LF)	490	397	90	3	0	0	CS2: (90 LF) Areas w/ spot or freckled rust. CS3: (3 LF) End of Bm 1 @ Pier 26 with exposed & rusted steel along bottom fl & ends of BMS 1 & 7 @ Pier 27 w/ exp & rusted steel along top fl.
331	4	Conc Bridge Railing	(LF)	140	134	0	6	0	0	CS3: (6 LF) Cracks w/ rust, 3' x 4" delamination and spall up to 4" dia x 1/2" deep w exp steel @ base of W. Parapet.
334	4	Metal Rail Coated	(LF)	70	54	0	16	0	0	CS3: (16 LF) 2 loose panels (Panels 3 & 4).
381	3	Painted Steel Diaphr	(EA)	24	9	15	0	0	0	CS2: (15 EA) Several diaph's w/ spot or freckled rust.
311	4	Moveable Bearing	(EA)	7	7	0	0	0	0	CS1: (7 EA) Sliding plate brgs @ Pier 27 w/ rust on pl edges & bolts.
313	4	Fixed Bearing	(EA)	7	7	0	0	0	0	CS1: (7 EA) Pier 26 brgs are heavily greased w/ NDN.
205	3	R/Conc Column	(LF)	56	56	0	0	0	0	NDN
215	3	R/Conc Abutment	(LF)	0	0	0	0	0	0	0
234	3	R/Conc Pier Cap	(LF)	46	39	5	2	0	0	CS2: (5 LF) Horizontal cracks up to 1/16" wide in bottom of pier cap under Bay 3. CS3: (2 LF) Full-width x 10" high x 7" deep spall on W. face of Ped. 4 w/ exp. steel and wide crack w/ rust stains w/ assoc delam and Ped 2, W. face w/ two cr's w/ rust. See Photo 21.
390	2	Reinf Conc Wingwalls	(LF)	0	0	0	0	0	0	0
356	1	Steel Fatigue SmFlag	(EA)	1	1	0	0	0	0	CS1: (1 EA) Span 29, BM1, No. end of cover plate, Span 31, BM2, So. end of cover plate and Span 34, BM3, No. end of cover plate previously noted possible cracks are cracks in the paint.
358	1	Deck Cracking SmFlag	(EA)	1	1	0	0	0	0	CS1: (1 EA) HL to fine trans cracks in the deck surface thruout.
359	1	Soffit Smart Flag	(EA)	1	0	1	0	0	0	CS2: (1 EA) Typical: HL to fine cracks thruout, some w/ light efflo or moisture. Random interior bays w/ rust stains from chairs and HL to fine trans and some diag cracks, some w/ light efflo. Random beam haunches w/ minor spalls. Span 29: 2' long haunch spall in Bay 1 at N. end. Span 30: Delaminations in E. o/hang near Pier 30 and rust stains from chairs. Span 31: Bay 1 w/ spall w/ exp steel (14"w x 17"l x 1.5"d) w/ assoc cr's w/ rust, just S. of mdsbn and (4"w x 6"l x 1.5"d) just N. of mdsbn. Bay 3 w/ 1/16"-1/8" trans cr w/ assoc delam @ mdsbn. Span 32: W. o/hang @ P32S w/ large spall. Bay 4 @ Pier 32 w/ corrosion to end deck pan, cracked and

										<p>spall to hanch in Bay 1. Span 33: Lg grout patched spall in Bay 1 w/ exp steel at N. end, spall along haunch in Bay 1 at N. end and incip spall along W. edge of BM 1. Span 34: Small spall w/ exp steel in Bay 5 @ mdsbn. Span 36: Bay 2 w/ 1' diam area of honeycombing, Bay 3 w/ 2 shallow spalls (6" diam and 3" diam) at 1st inter diaph and large delam patch near mdsbn of W. o/hang (40"l x 17"w). Span 37: Bay 3 near midspan 8" diam honeycomb. Span 39: Bay 2 @ midspan adj to BM 2 w/ area of honeycombing w/ exp steel. Span 40: Bay 2 @ P39 w/ incip spall (12" long x 8" wide). Localized areas of honeycombing thruout all bays. Span 44: Bay 5 N. end 10' from P44 w/ spall w/ exp steel (8" diam x 1" d). Span 47: S. end Bay 1 w/ 20" x 15" x 2"d spall w/ exp, rusted flaking steel w/ minor losses and assoc trans cr w/ rust. Span 48: 3" diam. spall under E. o/hang w/ exp. steel at S. end. Span 49: 12" long x 3" wide x 1" d spall and 8" x 3" delam in u/side of E. o/hang along BM 6 haunch @ Pier 49 joint w/ assoc. delam (8"l x 3"w). Span 52: S. end, Bay 1 w/ trans cr w/ rust. SPan 54: E. o/hang @ P54 w/ spall w/ exp steel. Span 55: E. side @ Pier 54 w/ unsound patch.</p>
363	1	Section Loss SmFlag	(EA)	1	1	0	0	0	0	<p>CS1: (1 EA) Typical: Random areas of up to 3/16" pitting found in bottom flange &amp; bottom of web along fascias, u/sides and beam ends below paint. Span 31: 100% section loss to Bay 2 diaph. vert. leg of bottom horiz. angle @ Pier 32, painted w/ no new defects and 1/8" deep pitting painted over in Bays 3, 4, 7 &amp; 8 over Pier 31. Span 32: Visible pitting below paint of bottom flange of BM 9. Span 33: Painted over pitting along the flanges @ ext faces. Span 34: @P34 Brg 5, E. anchor bolt w/ 30% section loss, painted over w/ no new defects. Span 35: BM1 bottom flange top and web at bearing with painted over pitting up to 1/8"d. Brg 6 @ Pier 35 w/ section loss painted w/ no new defects noted. Span 41: BM6 @ Pier 41 w/ 1/8" section loss for 2 LF of top flange. Span 60: Painted over pitting along the flanges @ ext faces.</p>

## DELAWARE DEPARTMENT OF TRANSPORTATION

*Bridge Management Section*  
*MultiSpan PONTIS Element Report for Span No. 2*

Bridge ID: 1748S059

Inspection Date: 3/28/2013

Description: Span 28S (Pier 27S to  
Pier 28S)

ELEM	ENV	DESCRIPTION	UNITS	TOTAL	CS1	CS2	CS3	CS4	CS5	COMMENTS
22	4	P Conc Deck/Rigid Ov	(SF)	0	0	0	0	0	0	0
65	4	Drainage	(EA)	1	1	0	0	0	0	CS1: (1 EA) Scupper and downspout w/ NDN.
300	4	Strip Seal Exp Joint	(LF)	48	0	48	0	0	0	CS2: (48 LF) Packed w/ debris in shoulders & into roadway and areas sunken (1/2") or debonded. Active leakage in Bay 1.
321	4	R/Conc Approach Slab	(EA)	0	0	0	0	0	0	0
107	3	Paint Stl Opn Girder	(LF)	504	450	50	4	0	0	CS2: (50 LF) Rolled beams w/ areas of spot and freckled rust on bottom flanges. CS3: (4 LF) Ends of BMs 1 & 7 @ piers w/ rusted steel along top fl and BM 7 @ Pier 28 stiff w/ exp & rusted steel at the bottom.
331	4	Conc Bridge Railing	(LF)	144	105	32	7	0	0	CS2: (32 LF) E & W barriers w/ HL - 1/16" cr's thruout. E. Parapet w/ spall @ base (4" diam x 1"d) and W. rail w/ horiz cr w/ efflo (1 SF). CS3: (7 LF) HL vert cracks w/ rust stains in W. Parapet at joint.
334	4	Metal Rail Coated	(LF)	72	0	6	58	8	0	CS2: (6 LF) Area of collision damage on two panels. Small areas of missing paint w/ exp metal. CS3: (58 LF) Most panels are not firmly attached. CS4: (8 LF) Random clusters of corrosion w/ holes thru panel. See Photo 19.
381	3	Painted Steel Diaphr	(EA)	24	6	18	0	0	0	CS2: (18 EA) Many intermediate diaph's w/ spot & freckled rust. Bay 3 @ P27 w/ top flange bent down 7/8" over 12"1.
311	4	Moveable Bearing	(EA)	7	7	0	0	0	0	CS1: (7 EA) Sliding plate brgs @ Pier 28 w/ rust to pl's w/ some flaked paint, worst at Brgs 1, 2, 3 & 7.
313	4	Fixed Bearing	(EA)	7	7	0	0	0	0	CS1: (7 EA) Pier 27 brgs are heavily greased w/ NDN.
205	3	R/Conc Column	(LF)	84	84	0	0	0	0	NDN
215	3	R/Conc Abutment	(LF)	0	0	0	0	0	0	0
234	3	R/Conc Pier Cap	(LF)	48	48	0	0	0	0	NDN
390	2	Reinf Conc Wingwalls	(LF)	0	0	0	0	0	0	0
356	1	Steel Fatigue SmFlag	(EA)	0	0	0	0	0	0	0
358	1	Deck Cracking SmFlag	(EA)	0	0	0	0	0	0	0
359	1	Soffit Smart Flag	(EA)	0	0	0	0	0	0	0
363	1	Section Loss SmFlag	(EA)	0	0	0	0	0	0	0

## DELAWARE DEPARTMENT OF TRANSPORTATION

*Bridge Management Section*  
*MultiSpan PONTIS Element Report for Span No. 3*

Bridge ID: 1748S059

Inspection Date: 3/28/2013

Description: Span 29S (Pier 28S to  
Pier 29S)

ELEM	ENV	DESCRIPTION	UNITS	TOTAL	CS1	CS2	CS3	CS4	CS5	COMMENTS
22	4	P Conc Deck/Rigid Ov	(SF)	0	0	0	0	0	0	0
65	4	Drainage	(EA)	1	1	0	0	0	0	CS1: (1 EA) Scupper and downspout w/ NDN.
300	4	Strip Seal Exp Joint	(LF)	51	0	51	0	0	0	CS2: (51 LF) Packed w/ debris mostly in shoulders and areas sunken (up to 1") or debonded.
321	4	R/Conc Approach Slab	(EA)	0	0	0	0	0	0	0
107	3	Paint Stl Opn Girder	(LF)	507	202	300	5	0	0	CS2: (300 LF) Rolled beams w/ spot or freckled rust on bottom flanges. Typ light staining on some top flanges along edges adj to soffit. CS3: (5 LF) Ends of BMs 1 & 7 top flanges at the piers and the top flange of BM 1 @ the soffit spall w/ exp & rusted steel.
331	4	Conc Bridge Railing	(LF)	145	96	32	17	0	0	CS2: (32 LF) E. barrier @ S. end w/ 1/16" w map cr's and horiz cr's thruout. W. barrier @ N. end w/ delam area btwn spalling (24"l x 8"h). CS3: (17 LF) E. & W. parapets w/ fine horiz. cracks w/ rust stains. W. barrier w/ spalls w/ exp steel up to 1/2" d each (4" x 10") and (6" x 8") @ mdsn and (9" high x 6" long) @ N. end.
334	4	Metal Rail Coated	(LF)	17	0	0	13	4	0	CS3: (13 LF) Both panels are severely loose. Small areas w/ missing paint and exp metal. CS4: (4 LF) Scattered clusters of small holes thru panel.
381	3	Painted Steel Diaphr	(EA)	24	0	24	0	0	0	CS2: (24 EA) Diaph's w/ spot or freckled rust. Top fl's of P28 diaph's and Bay 6 at P29 are slightly kinked.
311	4	Moveable Bearing	(EA)	7	7	0	0	0	0	CS1: (7 EA) Sliding plate brgs @ pier 28 w/ rust on pl's, worst @ Brg 1.
313	4	Fixed Bearing	(EA)	7	7	0	0	0	0	CS1: (7 EA) Pier 29 brgs are heavily greased w/ NDN.
205	3	R/Conc Column	(LF)	81	80	1	0	0	0	CS2: (1 LF) Col. 1 w/ NW corner spall (6" diam x 1" d).
215	3	R/Conc Abutment	(LF)	0	0	0	0	0	0	0
234	3	R/Conc Pier Cap	(LF)	51	49	2	0	0	0	CS2: (2 LF) 2 small spalls in N. face of Ped 6 and one small corner spall
390	2	Reinf Conc Wingwalls	(LF)	0	0	0	0	0	0	0
356	1	Steel Fatigue SmFlag	(EA)	0	0	0	0	0	0	0
358	1	Deck Cracking SmFlag	(EA)	0	0	0	0	0	0	0
359	1	Soffit Smart Flag	(EA)	0	0	0	0	0	0	0
363	1	Section Loss SmFlag	(EA)	0	0	0	0	0	0	0



## DELAWARE DEPARTMENT OF TRANSPORTATION

*Bridge Management Section*  
*MultiSpan PONTIS Element Report for Span No. 4*

Bridge ID: 1748S059

Inspection Date: 3/28/2013

Description: Span 30S (Pier 29S to  
Pier 30S)

ELEM	ENV	DESCRIPTION	UNITS	TOTAL	CS1	CS2	CS3	CS4	CS5	COMMENTS
22	4	P Conc Deck/Rigid Ov	(SF)	0	0	0	0	0	0	0
65	4	Drainage	(EA)	2	0	2	0	0	0	CS2: (2 EA) Dwnspt @ P30 w/ evidence of leakage @ bott sleeve and scupper w/ debris in pan but pipe open. S. end scupper is open and downspout is partially clogged with debris. There is a section missing at the bottom.
300	4	Strip Seal Exp Joint	(LF)	54	0	54	0	0	0	CS2: (54 LF) Packed w/ debris for full length and areas settled (up to 2") or debonded and evidence of leakage with ponding water on the cap. Hvy scale & small edge spalls along jt. Previously noted spall/settled bit patch has been repaired with a 5' wide x 1' long concrete patch. See Photo 18.
321	4	R/Conc Approach Slab	(EA)	0	0	0	0	0	0	0
107	3	Paint Stl Opm Girder	(LF)	583	427	145	11	0	0	CS2: (145 LF) Rolled beams w/ light scattered spot or freckled rust mostly on flanges. Light edge corrosion along top flange edges of some beams. CS3: (11 LF) Ends of BMs 1, 7 & 8 top fl's w/ exp & rusted steel. Top fl of BM 1 @ interm diaph w/ edge rust to top flange. U/side bott fl of BMs 1 & 3 w/ scrape w/ exp & rusted steel.
331	4	Conc Bridge Railing	(LF)	146	141	0	5	0	0	CS3: (5 LF) E & W barriers w/ 1/16" wide horiz cr's w/ rust. W. barrier @ S. end w/ spall w/ exp steel (4" x 8" x 2").
334	4	Metal Rail Coated	(LF)	0	0	0	0	0	0	0
381	3	Painted Steel Diaphr	(EA)	28	6	22	0	0	0	CS2: (22 EA) Many diaph's w/ light spot rust.
311	4	Moveable Bearing	(EA)	8	8	0	0	0	0	CS1: (8 EA) Sliding plate brgs @ Pier 30 w/ minor surface rust on pl edges and nuts and blistering around masonry pl. Brgs 2, 3, 4, 5, 7 & 8 w/ slightly bent anchor bolts. All bearings were within limits at 87°F.
313	4	Fixed Bearing	(EA)	8	8	0	0	0	0	CS1: (8 EA) Pier 29 brgs are heavily greased w/ NDN.
205	3	R/Conc Column	(LF)	75	74	0	1	0	0	CS3: (1 LF) Col 1, S & E faces @ mdht w/ HL to 1/16" vert cr w/ rust and assoc cracked patch on E. face.
215	3	R/Conc Abutment	(LF)	0	0	0	0	0	0	0
234	3	R/Conc Pier Cap	(LF)	54	44	4	6	0	0	CS2: (4 LF) Cracked & delam @ NE corner of Ped 1 (20"l x 15"w x 6"h), unsound and cracked patch repair in u/side W. o/hang w/ delam area (19"l x 19"w). N. face of Bay 1 @ bott w/ 1/16"w horiz crack. CS3: (6 LF) Spall w/ exp steel @ SW corner of ped 1 (6"l x 10"w x 6"h) w/ assoc. cracks w/ rust stains on S. face in Bay 1 around repair patch w/ assoc delam area (2'w). N. face, Bay 4 w/ cracked patch w/ rust @ bott that con't into u/side (3 LF).
390	2	Reinf Conc Wingwalls	(LF)	0	0	0	0	0	0	0
356	1	Steel Fatigue SmFlag	(EA)	0	0	0	0	0	0	0

358	1	Deck Cracking SmFlag	(EA)	0	0	0	0	0	0	0
359	1	Soffit Smart Flag	(EA)	0	0	0	0	0	0	0
363	1	Section Loss SmFlag	(EA)	0	0	0	0	0	0	0

## DELAWARE DEPARTMENT OF TRANSPORTATION

*Bridge Management Section*  
*MultiSpan PONTIS Element Report for Span No. 5*

Bridge ID: 1748S059

Inspection Date: 3/28/2013

Description: Span 31S (Pier 30S to  
Pier 31S)

ELEM	ENV	DESCRIPTION	UNITS	TOTAL	CS1	CS2	CS3	CS4	CS5	COMMENTS
22	4	P Conc Deck/Rigid Ov	(SF)	0	0	0	0	0	0	0
65	4	Drainage	(EA)	1	0	0	1	0	0	CS3: (1 EA) Scupper is clogged.
300	4	Strip Seal Exp Joint	(LF)	57	0	57	0	0	0	CS2: (57 LF) Active leakage w/ ponding on cap and filled w/ debris mostly in shldr, minor thruout.
321	4	R/Conc Approach Slab	(EA)	0	0	0	0	0	0	0
107	3	Paint Stl Opn Girder	(LF)	584	503	55	26	0	0	CS2: (55 LF) Random areas of spot or freckled rust, mostly on bott fl's, scattered minor edge corrosion to fl's. Light edge rust or freckles to top fl's of some beams. CS3: (26 LF) Ends of BMs 1 & 8 w/ exp & rusted steel to fascia top fl. BMs 2 & 8 w/ area of dense freckles and flaking paint @ N. ends. BM 2 w/ rusted gouge on bot flg at the N. end.
331	4	Conc Bridge Railing	(LF)	146	104	40	2	0	0	CS2: (40 LF) W. Parapet w/ up to 1/16" wide horiz. cracks along the top outside face. Minor spall @ base of E. barrier (1 SF). CS3: (2 LF) W. Parapet w/ crack @ S. end w/ rust stains.
334	4	Metal Rail Coated	(LF)	0	0	0	0	0	0	0
381	3	Painted Steel Diaphr	(EA)	28	4	24	0	0	0	CS2: (24 EA) Typically light spot rust on random diaph's. Some diaphs @ Pier 31 w/ 1/8" max section loss across entire diaph below paint.
311	4	Moveable Bearing	(EA)	8	6	2	0	0	0	CS1: (6 EA) Sliding plate brgs @ Pier 30 w/ corrosion to pl edges, some flaked paint and minor blistering mostly on masonry pl. Slightly bent anchor bolts at Brgs 2, 3, 5 & 7. All bearings were within limits at 81°F. CS2: (2 EA) Brg 6 & 8, W. anchor bolt is bent and nut is not tightened down against washer.
313	4	Fixed Bearing	(EA)	8	8	0	0	0	0	CS1: (8 EA) Pier 31 brgs are heavily greased w/ NDN.
205	3	R/Conc Column	(LF)	68	65	3	0	0	0	CS2: (3 LF) Col 1, NE corner w/ open spall w/ cr's (34"h x 14"w x 6"l).
215	3	R/Conc Abutment	(LF)	0	0	0	0	0	0	0
234	3	R/Conc Pier Cap	(LF)	57	38	9	10	0	0	CS2: (9 LF) W. o/hang u/side cr'd & unsound repairs thruout (40"l x 55"w), S. face under BM 1 and N. face Bays 3 & 6 w/ unsound & cr'd patches, Bay 6 extends onto u/side. CS3: (10 LF) Cracks w/ rust in S. face of cap @ W. end, Bay 1 and N. face Bay 1. Cr'd patch w/ rust under BM 2 on S. face. S. face, Bay 1 @ top w/ horiz cr w/ hvy rust w/ assoc delam (3'w x 6"h) and con't into seat w/ assoc cr and open/incip spall (3'w x 10"l).
390	2	Reinf Conc Wingwalls	(LF)	0	0	0	0	0	0	0
356	1	Steel Fatigue SmFlag	(EA)	0	0	0	0	0	0	0
358	1	Deck Cracking SmFlag	(EA)	0	0	0	0	0	0	0
359	1	Soffit Smart Flag	(EA)	0	0	0	0	0	0	0
363	1	Section Loss SmFlag	(EA)	0	0	0	0	0	0	0



## DELAWARE DEPARTMENT OF TRANSPORTATION

*Bridge Management Section*  
*MultiSpan PONTIS Element Report for Span No. 6*

Bridge ID: 1748S059

Inspection Date: 3/28/2013

Description: Span 32S (Pier 31S to  
Pier 32S)

ELEM	ENV	DESCRIPTION	UNITS	TOTAL	CS1	CS2	CS3	CS4	CS5	COMMENTS
22	4	P Conc Deck/Rigid Ov	(SF)	0	0	0	0	0	0	0
65	4	Drainage	(EA)	1	0	0	1	0	0	CS3: (1 EA) Scupper is clogged.
300	4	Strip Seal Exp Joint	(LF)	60	0	60	0	0	0	CS2: (60 LF) Packed w/ debris in shoulders & gore area and active leakage with ponding water on cap noted. Minor spalling to deck along jt.
321	4	R/Conc Approach Slab	(EA)	0	0	0	0	0	0	0
107	3	Paint Stl Ogn Girder	(LF)	657	406	206	45	0	0	CS2: (206 LF) Freckled & spot rust on flanges scattered along length CS3: (45 LF) Ends and few scattered areas of BMS 1 & 9 w/ exp & rusted steel along fascia top flange, BM 6 w/ rusted gouge on bott fl near mdspn and ends @ P32 w/ rusted spot to web at built up plates.
331	4	Conc Bridge Railing	(LF)	146	72	43	31	0	0	CS2: (43 LF) W. Parapet w/ up to 1/16" wide horiz. cracks along outside face. E. Parapet w/ area of 1/16" to 1/8" wide map cr's along inside face @ S. end. CS3: (31 LF) Crack w/ rust @ N. end of E. Parapet. Typ HL - 1/16" cr's w/ light rust thruout.
334	4	Metal Rail Coated	(LF)	0	0	0	0	0	0	0
381	3	Painted Steel Diaphr	(EA)	32	6	25	1	0	0	CS2: (25 EA) Numerous diaph's w/ light freckled rust. Bay 4 end diaph w/ flaked paint w/ exp primer. CS3: (1 EA) End Bay 1 diaph @ Pier 32 w/ exp rusted steel.
311	4	Moveable Bearing	(EA)	9	9	0	0	0	0	CS1: (9 EA) Sliding plate brgs @ Pier 32 w/ light bleeding rust to Brgs 1 thru 6. Surface rust to some pl edges, random masonry pl's w/ blistering and some flaking paint.
313	4	Fixed Bearing	(EA)	9	9	0	0	0	0	CS1: (9 EA) Pier 31 brgs are heavily greased w/ NDN.
205	3	R/Conc Column	(LF)	68	63	4	1	0	0	CS2: (4 LF) Delam or unsound patch (4 SF) on SE corner of Col 1, top SW corner w/ spall (4" diam), and N. face @ top w/ delam w/ crack (14"w x 15"h). CS3: (1 LF) Col 1, SE face @ mdht w/ unsound patch w/ cracks w/ rust and shallow spalling.
215	3	R/Conc Abutment	(LF)	0	0	0	0	0	0	0
234	3	R/Conc Pier Cap	(LF)	60	12	17	31	0	0	CS2: (17 LF) Area w/ cr's & rust stains in u/side btwn Col's 2 & 3 (44"l x 45"w) and W. end (6'w x 4'l w/ 2SF hollow area). N. face, Bay 2 w/ 1/8" horiz cr in patch and cr's w/ delam at Col 1 (12"h x 14"w), Bay 3 w/ 1/8" horiz cr (40"l) and cracks in patch, Bay 4 bott of cap w/ horiz cr's w/ assoc delam (3'w x 7"h) CS3: (31 LF) Cracks w/ rust @ W. end and S. face Bay 6, 1/8" wide crack w/ rust on S. face @ bottom in Bays 3 & 4 w/ assoc delam (10'w x 7"h) and unsound area in u/side w/ cr's w/ rust btwn Col 1 & 2 (10'w x 44"l). N. face - Bay 1 @ bott w/ horiz cr w/ rust w/ open/incip spall (3'w x 3'h) and top w/ horiz cr w/ rust and full ht cr'd patch w/ rust and assoc delam (2'w); Bay 3 w/ HL diag cr w/ rust; and rust from construction jt at ped's 3 & 4. W. face of Ped 2 w/ cr's w/ rust.

390	2	Reinf Conc Wingwalls	(LF)	0	0	0	0	0	0	0
356	1	Steel Fatigue SmFlag	(EA)	0	0	0	0	0	0	0
358	1	Deck Cracking SmFlag	(EA)	0	0	0	0	0	0	0
359	1	Soffit Smart Flag	(EA)	0	0	0	0	0	0	0
363	1	Section Loss SmFlag	(EA)	0	0	0	0	0	0	0

## DELAWARE DEPARTMENT OF TRANSPORTATION

### *Bridge Management Section MultiSpan PONTIS Element Report for Span No. 7*

**Bridge ID:** 1748S059

**Inspection Date:** 3/28/2013

**Description:** Span 33S (Pier 32S to  
Pier 33S)

ELEM	ENV	DESCRIPTION	UNITS	TOTAL	CS1	CS2	CS3	CS4	CS5	COMMENTS
22	4	P Conc Deck/Rigid Ov	(SF)	0	0	0	0	0	0	0
65	4	Drainage	(EA)	2	1	1	0	0	0	CS2: (1 EA) N. scupper w/ debris in pan.
300	4	Strip Seal Exp Joint	(LF)	66	0	66	0	0	0	CS2: (66 LF) Packed w/ debris in shoulders & gore area and settled and active leakage noted.
321	4	R/Conc Approach Slab	(EA)	0	0	0	0	0	0	0
107	3	Paint Stl Opn Girder	(LF)	1228	724	500	4	0	0	CS2: (500 LF) Plate Girders: Localized areas of spot rust along flanges. CS3: (4 LF) BM 1 @ P32 w/ area of rust along top fl @ soffit spall.
331	4	Conc Bridge Railing	(LF)	273	143	100	30	0	0	CS2: (100 LF) W. Parapet outside face with horiz cracks up to 1/16" wide along the top. CS3: (30 LF) Typ 1/16" horiz cr's w/ lt rust thruout.
334	4	Metal Rail Coated	(LF)	0	0	0	0	0	0	0
381	3	Painted Steel Diaphr	(EA)	54	5	46	3	0	0	CS2: (46 EA) Most intermediate diaph's have spot rust. CS3: (3 EA) End diaphs @ P32 in Bays 1 & 3 w/ area of exp & rusted steel.
311	4	Moveable Bearing	(EA)	9	9	0	0	0	0	CS1: (9 EA) Sliding plate brgs @ Pier 32 are all w/in limits w/ blisters on random masonry pl's, some flaked paint and lam rust mostly on pl edges and nuts.
313	4	Fixed Bearing	(EA)	9	9	0	0	0	0	CS1: (9 EA) Pier 33 brgs w/ spot rust.
205	3	R/Conc Column	(LF)	47	47	0	0	0	0	NDN
215	3	R/Conc Abutment	(LF)	0	0	0	0	0	0	0
234	3	R/Conc Pier Cap	(LF)	66	62	0	4	0	0	CS3: (4 LF) Crack w/ rust in S. face of Ped 3. Few cr's w/ rust @ E. end of S. face.
390	2	Reinf Conc Wingwalls	(LF)	0	0	0	0	0	0	0
356	1	Steel Fatigue SmFlag	(EA)	0	0	0	0	0	0	0
358	1	Deck Cracking SmFlag	(EA)	0	0	0	0	0	0	0
359	1	Soffit Smart Flag	(EA)	0	0	0	0	0	0	0
363	1	Section Loss SmFlag	(EA)	0	0	0	0	0	0	0

# DELAWARE DEPARTMENT OF TRANSPORTATION

## Bridge Management Section MultiSpan PONTIS Element Report for Span No. 8

**Bridge ID:** 1748S059

**Inspection Date:** 3/28/2013

**Description:** Span 34S (Pier 33S to  
Pier 34S)

ELEM	ENV	DESCRIPTION	UNITS	TOTAL	CS1	CS2	CS3	CS4	CS5	COMMENTS
22	4	P Conc Deck/Rigid Ov	(SF)	0	0	0	0	0	0	0
65	4	Drainage	(EA)	1	0	1	0	0	0	CS2: (1 EA) Scupper is open. Bottom section is missing.
300	4	Strip Seal Exp Joint	(LF)	42	0	42	0	0	0	CS2: (42 LF) Packed w/ debris over shoulders, active leakage and small areas are settled (up to 1/2") or debonded and some gouges to metal joint armor.
321	4	R/Conc Approach Slab	(EA)	0	0	0	0	0	0	0
107	3	Paint Stl Opn Girder	(LF)	384	189	192	3	0	0	CS2: (192 LF) Random light spot rust along flanges. CS3: (3 LF) Scraped paint w/ light rust to exp. steel on bottom flange of BM 2 near 1/3 span from S. end.
331	4	Conc Bridge Railing	(LF)	130	113	0	17	0	0	CS3: (17 LF) Patch @ NW end w/ HL cracks w/ some rust stains (2'w x 2.25'l). Typ 1/16" wide horiz cr's w/ light rust thruout on W. Parapet outside face.
334	4	Metal Rail Coated	(LF)	0	0	0	0	0	0	0
381	3	Painted Steel Diaphr	(EA)	20	9	11	0	0	0	CS2: (11 EA) Light freckled or spot rust.
311	4	Moveable Bearing	(EA)	6	6	0	0	0	0	CS1: (6 EA) Sliding plate brgs @ Pier 34 are heavily greased w/ NDN. Brg 5, E. anchor bolt w/ 30% section loss painted. Most sliding plates contracted (flush or nearly flush with masonry plate) at 81 deg F.
313	4	Fixed Bearing	(EA)	6	6	0	0	0	0	CS1: (6 EA) Pier 33 brgs are heavily greased w /spot rust.
205	3	R/Conc Column	(LF)	35	32	0	3	0	0	CS3: (3 LF) Few horiz cr's w/ rust on S. face of Col 2.
215	3	R/Conc Abutment	(LF)	0	0	0	0	0	0	0
234	3	R/Conc Pier Cap	(LF)	42	41	1	0	0	0	CS2: (1 LF) Spall in E. face of Ped 5 (11"l x 6"h x 1" d).
390	2	Reinf Conc Wingwalls	(LF)	0	0	0	0	0	0	0
356	1	Steel Fatigue SmFlag	(EA)	0	0	0	0	0	0	0
358	1	Deck Cracking SmFlag	(EA)	0	0	0	0	0	0	0
359	1	Soffit Smart Flag	(EA)	0	0	0	0	0	0	0
363	1	Section Loss SmFlag	(EA)	0	0	0	0	0	0	0



# DELAWARE DEPARTMENT OF TRANSPORTATION

## *Bridge Management Section* *MultiSpan PONTIS Element Report for Span No. 9*

**Bridge ID:** 1748S059

**Inspection Date:** 3/28/2013

**Description:** Span 35S (Pier 34S to  
Pier 35S)

ELEM	ENV	DESCRIPTION	UNITS	TOTAL	CS1	CS2	CS3	CS4	CS5	COMMENTS
22	4	P Conc Deck/Rigid Ov	(SF)	0	0	0	0	0	0	0
65	4	Drainage	(EA)	1	0	0	1	0	0	CS3: (1 EA) Scupper open, downspout clogged at base.
300	4	Strip Seal Exp Joint	(LF)	42	0	42	0	0	0	CS2: (42 LF) Packed w/ debris thruout most of joint, settled mat'l, debonded in Bays 3-5 and leakage noted. Minor edge spalling to deck along jt up to 1' w x 7"l x 1"d.
321	4	R/Conc Approach Slab	(EA)	0	0	0	0	0	0	0
107	3	Paint Stl Ogn Girder	(LF)	408	205	200	3	0	0	CS2: (200 LF) Random light spot rust thruout. CS3: (3 LF) Scraped paint on bottom flange cover plate of BM 5 @ N. end w/ light rust to exp. steel. Ext top fl's of BMs 1 & 6 @ P35 w/ exp & rusted steel.
331	4	Conc Bridge Railing	(LF)	136	112	0	24	0	0	CS3: (24 LF) W. Parapet w/ cracks w/ rust stains @ N. & S. ends and patch w/ cr's w/ rust @ N. end. Typ 1/16" cr's w/ rust thruout.
334	4	Metal Rail Coated	(LF)	0	0	0	0	0	0	0
381	3	Painted Steel Diaphr	(EA)	20	0	20	0	0	0	CS2: (20 EA) Very light spot rust to all diaph's. Kink in top fl of Bay 1 end diaph @ P35.
311	4	Moveable Bearing	(EA)	6	5	1	0	0	0	CS1: (5 EA) Sliding plate brgs @ Pier 35 are contracted @ 73 w/ S. edge of sole pl flush w/ masonry plate but w/in limits, heavily greased. CS2: (1 EA) Brg 1 sliding pl o/hangs masonry pl on S. edge by 1/2"l to 3/4"w.
313	4	Fixed Bearing	(EA)	6	6	0	0	0	0	CS1: (6 EA) Pier 34 brgs are heavily greased w/ NDN.
205	3	R/Conc Column	(LF)	30	30	0	0	0	0	CS1: (30 LF) Random patches in columns are sound with hairline map cracks.
215	3	R/Conc Abutment	(LF)	0	0	0	0	0	0	0
234	3	R/Conc Pier Cap	(LF)	42	42	0	0	0	0	CS1: (42 LF) Random patches in cap are sound with hairline map cracks.
390	2	Reinf Conc Wingwalls	(LF)	0	0	0	0	0	0	0
356	1	Steel Fatigue SmFlag	(EA)	0	0	0	0	0	0	0
358	1	Deck Cracking SmFlag	(EA)	0	0	0	0	0	0	0
359	1	Soffit Smart Flag	(EA)	0	0	0	0	0	0	0
363	1	Section Loss SmFlag	(EA)	0	0	0	0	0	0	0

## DELAWARE DEPARTMENT OF TRANSPORTATION

### *Bridge Management Section MultiSpan PONTIS Element Report for Span No. 10*

**Bridge ID:** 1748S059

**Inspection Date:** 3/28/2013

**Description:** Span 36S (Pier 35S to  
Pier 36S)

ELEM	ENV	DESCRIPTION	UNITS	TOTAL	CS1	CS2	CS3	CS4	CS5	COMMENTS
22	4	P Conc Deck/Rigid Ov	(SF)	0	0	0	0	0	0	0
65	4	Drainage	(EA)	0	0	0	0	0	0	0
300	4	Strip Seal Exp Joint	(LF)	42	0	42	0	0	0	CS2: (42 LF) Packed w/ debris for partial width, evidence of possible leakage, settled areas and gouges to metal jt armor. Minor edge spalling along north edge, 18" long x 4" wide x up to 2" deep.
321	4	R/Conc Approach Slab	(EA)	0	0	0	0	0	0	0
107	3	Paint Stl Opn Girder	(LF)	410	206	200	4	0	0	CS2: (200 LF) Random light spot rust. CS3: (4 LF) Typ areas of exp & rusted steel @ fascia ends of BMs.
331	4	Conc Bridge Railing	(LF)	136	131	0	5	0	0	CS3: (5 LF) Few 1/16" wide vert & horiz cr's w/ rust.
334	4	Metal Rail Coated	(LF)	0	0	0	0	0	0	0
381	3	Painted Steel Diaphr	(EA)	20	0	20	0	0	0	CS2: (20 EA) Light spot rust to flanges on diaph's.
311	4	Moveable Bearing	(EA)	6	6	0	0	0	0	CS1: (6 EA) Sliding plate brgs @ Pier 35 are heavily greased w/ NDN.
313	4	Fixed Bearing	(EA)	6	6	0	0	0	0	CS1: (6 EA) Pier 36 brgs are heavily greased w/ NDN.
205	3	R/Conc Column	(LF)	30	30	0	0	0	0	NDN
215	3	R/Conc Abutment	(LF)	0	0	0	0	0	0	0
234	3	R/Conc Pier Cap	(LF)	42	40	1	1	0	0	CS2: (1 LF) Small corner spall @ SE corner of Ped 5 (4'h x 2.5"w x 1/2"d) with adjacent patch in cap with hairline vert crack & 1'h x 3"w delam. CS3: (1 LF) Spall w/ rust stain on E. face of cap.
390	2	Reinf Conc Wingwalls	(LF)	0	0	0	0	0	0	0
356	1	Steel Fatigue SmFlag	(EA)	0	0	0	0	0	0	0
358	1	Deck Cracking SmFlag	(EA)	0	0	0	0	0	0	0
359	1	Soffit Smart Flag	(EA)	0	0	0	0	0	0	0
363	1	Section Loss SmFlag	(EA)	0	0	0	0	0	0	0

## DELAWARE DEPARTMENT OF TRANSPORTATION

*Bridge Management Section*  
*MultiSpan PONTIS Element Report for Span No. 11*

Bridge ID: 1748S059

Inspection Date: 3/28/2013

Description: Span 37S (Pier 36S to  
Pier 37S)

ELEM	ENV	DESCRIPTION	UNITS	TOTAL	CS1	CS2	CS3	CS4	CS5	COMMENTS
22	4	P Conc Deck/Rigid Ov	(SF)	0	0	0	0	0	0	0
65	4	Drainage	(EA)	1	0	0	1	0	0	CS3: (1 EA) Downspout clogged @ base, scupper open.
300	4	Strip Seal Exp Joint	(LF)	42	0	42	0	0	0	CS2: (42 LF) Packed w/ debris in shoulder and areas settled (<1/2") or debonded and evidence leakage.
321	4	R/Conc Approach Slab	(EA)	0	0	0	0	0	0	0
107	3	Paint Stl Ogn Girder	(LF)	424	270	150	4	0	0	CS2: (150 LF) Random beams w/ light spot rust @ ends or on cover plates. CS3: (4 LF) Typ exp & rusted steel to fascia ends of beams.
331	4	Conc Bridge Railing	(LF)	141	118	1	22	0	0	CS2: (1 LF) W. barrier w/ vert cr w/ efflo. CS3: (22 LF) E. barrier w/ 1/16" wide horiz cr w/ rust.
334	4	Metal Rail Coated	(LF)	0	0	0	0	0	0	0
381	3	Painted Steel Diaphr	(EA)	20	0	20	0	0	0	CS2: (20 EA) Light spot rust on diaph's. Top fl in Bay 1 is slightly bent.
311	4	Moveable Bearing	(EA)	6	6	0	0	0	0	CS1: (6 EA) N. Sliding plate brgs @ Pier 37 are contracted @ 69 degrees but w/in limits & heavily greased.
313	4	Fixed Bearing	(EA)	6	6	0	0	0	0	CS1: (6 EA) Pier 36 brgs are heavily greased w/ NDN.
205	3	R/Conc Column	(LF)	29	29	0	0	0	0	NDN
215	3	R/Conc Abutment	(LF)	0	0	0	0	0	0	0
234	3	R/Conc Pier Cap	(LF)	42	38	1	3	0	0	CS2: (1 LF) Shallow corner spall in S. edge of Ped 5 (3" diam). CS3: (3 LF) Spall on E. face of Ped. 1 w/ exp. steel (18"l x 6"h x 2"d). Horiz cr w/ rust in bott of S. face @ E. end that con't into E. face up to 1/16"w.
390	2	Reinf Conc Wingwalls	(LF)	0	0	0	0	0	0	0
356	1	Steel Fatigue SmFlag	(EA)	0	0	0	0	0	0	0
358	1	Deck Cracking SmFlag	(EA)	0	0	0	0	0	0	0
359	1	Soffit Smart Flag	(EA)	0	0	0	0	0	0	0
363	1	Section Loss SmFlag	(EA)	0	0	0	0	0	0	0

# DELAWARE DEPARTMENT OF TRANSPORTATION

## *Bridge Management Section* *MultiSpan PONTIS Element Report for Span No. 12*

**Bridge ID:** 1748S059

**Inspection Date:** 3/28/2013

**Description:** Span 38S (Pier 37S to Pier 38S)

ELEM	ENV	DESCRIPTION	UNITS	TOTAL	CS1	CS2	CS3	CS4	CS5	COMMENTS
22	4	P Conc Deck/Rigid Ov	(SF)	0	0	0	0	0	0	0
65	4	Drainage	(EA)	0	0	0	0	0	0	0
300	4	Strip Seal Exp Joint	(LF)	42	0	42	0	0	0	CS2: (42 LF) Packed w/ debris, settled (+1½") and possible debonded area.
321	4	R/Conc Approach Slab	(EA)	0	0	0	0	0	0	0
107	3	Paint Stl Opn Girder	(LF)	412	207	200	5	0	0	CS2: (200 LF) Localized areas of very light spot rust on bottom flanges. CS3: (5 LF) Typ rust along fascia ends of beams.
331	4	Conc Bridge Railing	(LF)	137	129	1	7	0	0	CS2: (1 LF) E. barrier w/ 4" dia. x ½" d spall at bottom (1 SF). CS3: (7 LF) E. and W. barrier w/ few cr's w/ rust.
334	4	Metal Rail Coated	(LF)	0	0	0	0	0	0	0
381	3	Painted Steel Diaphr	(EA)	20	3	17	0	0	0	CS2: (17 EA) Most w/ very light spot rust and dents in top flange of Bay 1 diaph @ Pier 37.
311	4	Moveable Bearing	(EA)	6	6	0	0	0	0	CS1: (6 EA) Sliding plate brgs @ Pier 37 are contracted @ 69 degrees, Bearing 1, 2, 4 & 6 sliding pl's are flush w/ N. edge of masonry pl but w/in limits and heavily greased. Bearing 6 has 1/16" pack rust between the sliding and masonry plates.
313	4	Fixed Bearing	(EA)	6	6	0	0	0	0	CS1: (6 EA) Pier 38 brgs are heavily greased w/ NDN.
205	3	R/Conc Column	(LF)	29	29	0	0	0	0	NDN
215	3	R/Conc Abutment	(LF)	0	0	0	0	0	0	0
234	3	R/Conc Pier Cap	(LF)	42	40	2	0	0	0	CS2: (2 LF) Delam in E. face of Ped 1 (11"l x 9"h). Ped 4 W. face 4" l x 3" h delam with corrosion staining.
390	2	Reinf Conc Wingwalls	(LF)	0	0	0	0	0	0	0
356	1	Steel Fatigue SmFlag	(EA)	0	0	0	0	0	0	0
358	1	Deck Cracking SmFlag	(EA)	0	0	0	0	0	0	0
359	1	Soffit Smart Flag	(EA)	0	0	0	0	0	0	0
363	1	Section Loss SmFlag	(EA)	0	0	0	0	0	0	0

## DELAWARE DEPARTMENT OF TRANSPORTATION

*Bridge Management Section*  
*MultiSpan PONTIS Element Report for Span No. 13*

Bridge ID: 1748S059

Inspection Date: 3/28/2013

Description: Span 39S (Pier 38S to  
Pier 39S)

ELEM	ENV	DESCRIPTION	UNITS	TOTAL	CS1	CS2	CS3	CS4	CS5	COMMENTS
22	4	P Conc Deck/Rigid Ov	(SF)	0	0	0	0	0	0	0
65	4	Drainage	(EA)	1	0	0	1	0	0	CS3: (1 EA) Scupper open, downspout clogged @ base.
300	4	Strip Seal Exp Joint	(LF)	42	0	42	0	0	0	CS2: (42 LF) Packed w/ debris in shoulders and minor thruout, areas are settled (<1") or debonded and evidence of leakage.
321	4	R/Conc Approach Slab	(EA)	0	0	0	0	0	0	0
107	3	Paint Stl Opn Girder	(LF)	411	257	150	4	0	0	CS2: (150 LF) Localized areas of light spot rust on flanges. CS3: (4 LF) Typ rust at fascia ends of beams.
331	4	Conc Bridge Railing	(LF)	137	120	1	16	0	0	CS2: (1 LF) W Parapet N. end inside face with 6' h x 2"w x 2"d spall. CS3: (16 LF) Cracks w/ rust stains @ all corners and 2'h x 1.5'l patch w/ many HL cracks w/ rust stains to face of W. Parapet. Typ horiz cr's w/ rust thruout W barrier outside face.
334	4	Metal Rail Coated	(LF)	0	0	0	0	0	0	0
381	3	Painted Steel Diaphr	(EA)	20	0	20	0	0	0	CS2: (20 EA) Light spot or freckled rust. Kinked top fl's to end diaph's in Bays 1 thru 4 at P39.
311	4	Moveable Bearing	(EA)	6	6	0	0	0	0	CS1: (6 EA) Sliding plate brgs @ Pier 39 are within limits at 73°F and heavily greased with spot rust.
313	4	Fixed Bearing	(EA)	6	6	0	0	0	0	CS1: (6 EA) Pier 38 brgs are heavily greased w/ NDN.
205	3	R/Conc Column	(LF)	29	29	0	0	0	0	NDN
215	3	R/Conc Abutment	(LF)	0	0	0	0	0	0	0
234	3	R/Conc Pier Cap	(LF)	42	41	0	1	0	0	CS3: (1 LF) Shallow cover spall w/ exp & rusted steel in E. face of Ped 1 (16"l x 2"h).
390	2	Reinf Conc Wingwalls	(LF)	0	0	0	0	0	0	0
356	1	Steel Fatigue SmFlag	(EA)	0	0	0	0	0	0	0
358	1	Deck Cracking SmFlag	(EA)	0	0	0	0	0	0	0
359	1	Soffit Smart Flag	(EA)	0	0	0	0	0	0	0
363	1	Section Loss SmFlag	(EA)	0	0	0	0	0	0	0

# DELAWARE DEPARTMENT OF TRANSPORTATION

## Bridge Management Section MultiSpan PONTIS Element Report for Span No. 14

Bridge ID: 1748S059

Inspection Date: 3/28/2013

Description: Span 40S (Pier 39S to  
Pier 40S)

ELEM	ENV	DESCRIPTION	UNITS	TOTAL	CS1	CS2	CS3	CS4	CS5	COMMENTS
22	4	P Conc Deck/Rigid Ov	(SF)	0	0	0	0	0	0	0
65	4	Drainage	(EA)	0	0	0	0	0	0	0
300	4	Strip Seal Exp Joint	(LF)	42	0	42	0	0	0	CS2: (42 LF) Packed w/ debris in shoulder and areas settled or debonded and evidence of leakage. NW jt armor is pulling out of the parapet.
321	4	R/Conc Approach Slab	(EA)	0	0	0	0	0	0	0
107	3	Paint Stl Opn Girder	(LF)	411	257	150	4	0	0	CS2: (150 LF) Localized very light spot rust on flanges. CS3: (4 LF) Fascia ends of beams w/ typ exp & rusted steel.
331	4	Conc Bridge Railing	(LF)	137	120	16	1	0	0	CS2: (16 LF) E. barrier w/ 1/16" wide horiz cr. & E. Parapet S. end with 10"h x 4"w x 1½" d spall. CS3: (1 LF) E. barrier HL vert cr. with rust on outside face of parapet.
334	4	Metal Rail Coated	(LF)	0	0	0	0	0	0	0
381	3	Painted Steel Diaphr	(EA)	20	0	20	0	0	0	CS2: (20 EA) All diaph's w/ very light spot rust. Minor kinks in the top fl's @ Bays 1, 3 & 4 @ Pier 40.
311	4	Moveable Bearing	(EA)	6	6	0	0	0	0	CS1: (6 EA) Sliding plate brgs @ Pier 39 are w/in limits and heavily greased. Fascia bearings with min surface corrosion and 1/8" pack rust between masonry plates and pedestal.
313	4	Fixed Bearing	(EA)	6	6	0	0	0	0	CS1: (6 EA) Pier 40 brgs are heavily greased. Fascia bearings with 1/8" pack rust between masonry plates and pedestal.
205	3	R/Conc Column	(LF)	30	30	0	0	0	0	NDN
215	3	R/Conc Abutment	(LF)	0	0	0	0	0	0	0
234	3	R/Conc Pier Cap	(LF)	42	40	1	1	0	0	CS2: (1 LF) Small corner spall @ NW corner of Ped 3 (3" diam). CS3: (1 LF) Spall w/ exp. steel w/ light rust on E. face of Ped. 1 (15"l x 6"h x ½"d).
390	2	Reinf Conc Wingwalls	(LF)	0	0	0	0	0	0	0
356	1	Steel Fatigue SmFlag	(EA)	0	0	0	0	0	0	0
358	1	Deck Cracking SmFlag	(EA)	0	0	0	0	0	0	0
359	1	Soffit Smart Flag	(EA)	0	0	0	0	0	0	0
363	1	Section Loss SmFlag	(EA)	0	0	0	0	0	0	0

## DELAWARE DEPARTMENT OF TRANSPORTATION

*Bridge Management Section*  
*MultiSpan PONTIS Element Report for Span No. 15*

Bridge ID: 1748S059

Inspection Date: 3/28/2013

Description: Span 41S (Pier 40S to  
Pier 41S)

ELEM	ENV	DESCRIPTION	UNITS	TOTAL	CS1	CS2	CS3	CS4	CS5	COMMENTS
22	4	P Conc Deck/Rigid Ov	(SF)	0	0	0	0	0	0	0
65	4	Drainage	(EA)	1	0	0	1	0	0	CS3: (1 EA) Scupper open, downspout clogged @ base.
300	4	Strip Seal Exp Joint	(LF)	42	0	42	0	0	0	CS2: (42 LF) Packed w/ debris in shoulder and sunken 3" and evidence of leakage.
321	4	R/Conc Approach Slab	(EA)	0	0	0	0	0	0	0
107	3	Paint Stl Opn Girder	(LF)	411	256	150	5	0	0	CS2: (150 LF) Localized very light spot rust on the flanges. CS3: (5 LF) Typ exp & rusted steel @ fascia ends of beams.
331	4	Conc Bridge Railing	(LF)	137	135	0	2	0	0	CS3: (2 LF) 4" dia. x 2" dp spall w/ exp steel in W. Parapet @ S. end and vert hl crk with rust.
334	4	Metal Rail Coated	(LF)	0	0	0	0	0	0	0
381	3	Painted Steel Diaphr	(EA)	20	4	16	0	0	0	CS2: (16 EA) Most diaph's have light spot rust. Kink in top fl @ Bay 2 @ Pier 40.
311	4	Moveable Bearing	(EA)	6	4	2	0	0	0	CS1: (4 EA) Sliding plate brgs @ Pier 41 are contracted at 75 degrees w/ sliding plate flush with S. edge masonry plate but w/in limits. All are heavily greased. Brg 6 has peeling paint and blistered rust on the S. face. CS2: (2 EA) Brg 4 is contracted 1.5", sliding plate S. edge w/ 1/4" overhanging masonry plate. Brg 5 overhangs masonry plate 1/8". All are heavily greased.
313	4	Fixed Bearing	(EA)	6	6	0	0	0	0	CS1: (6 EA) Pier 40 brgs are heavily greased w/ NDN.
205	3	R/Conc Column	(LF)	31	30	1	0	0	0	CS2: (1 LF) Col 2, SE corner @ base w/ small spall - painted over.
215	3	R/Conc Abutment	(LF)	0	0	0	0	0	0	0
234	3	R/Conc Pier Cap	(LF)	42	41	0	1	0	0	CS3: (1 LF) Spall w/ exp steel and assoc. delam conc. on Ped. 1, E. face (40"l x 8"h x 8"dp). See Photo 22.
390	2	Reinf Conc Wingwalls	(LF)	0	0	0	0	0	0	0
356	1	Steel Fatigue SmFlag	(EA)	0	0	0	0	0	0	0
358	1	Deck Cracking SmFlag	(EA)	0	0	0	0	0	0	0
359	1	Soffit Smart Flag	(EA)	0	0	0	0	0	0	0
363	1	Section Loss SmFlag	(EA)	0	0	0	0	0	0	0

## DELAWARE DEPARTMENT OF TRANSPORTATION

*Bridge Management Section*  
*MultiSpan PONTIS Element Report for Span No. 16*

Bridge ID: 1748S059

Inspection Date: 3/28/2013

Description: Span 42S (Pier 41S to  
Pier 42S)

ELEM	ENV	DESCRIPTION	UNITS	TOTAL	CS1	CS2	CS3	CS4	CS5	COMMENTS
22	4	P Conc Deck/Rigid Ov	(SF)	0	0	0	0	0	0	0
65	4	Drainage	(EA)	1	1	0	0	0	0	CS1: (1 EA) Scupper and downspout w/ NDN.
300	4	Strip Seal Exp Joint	(LF)	42	42	0	0	0	0	CS1: (42 LF) Filled w/ debris in shoulders, minor in rdwy. Strip seal is settled ±1".
321	4	R/Conc Approach Slab	(EA)	0	0	0	0	0	0	0
107	3	Paint Stl Opn Girder	(LF)	412	298	100	14	0	0	CS2: (100 LF) Localized very light spot rust on bottom flanges. CS3: (14 LF) Typ exp & rusted steel to the ends of the fascia beams, BM 5 w/ peeling paint w/ rusted steel to N. end of cover pl and BM 6 w/ rust along interior top fl scattered thruout.
331	4	Conc Bridge Railing	(LF)	137	35	100	2	0	0	CS2: (100 LF) 1/16" wide vert. crack @ NW end, w/ assoc incip spall, 8"l x 10"h collision spall @ top of W. Parapet and horiz cr's thruout length. CS3: (2 LF) W. barrier inside face @ S. end w/ spall w/ exp steel (6" diam) and vert cr w/ rust on outside face.
334	4	Metal Rail Coated	(LF)	0	0	0	0	0	0	0
381	3	Painted Steel Diaphr	(EA)	20	0	20	0	0	0	CS2: (20 EA) All diaph's have very light spot rust.
311	4	Moveable Bearing	(EA)	6	6	0	0	0	0	CS1: (6 EA) Sliding plate brgs @ Pier 41 are slightly contracted @ 60 degrees and w/in limits and heavily greased with spot rust.
313	4	Fixed Bearing	(EA)	6	6	0	0	0	0	CS1: (6 EA) Pier 42 brgs are heavily greased w/ NDN.
205	3	R/Conc Column	(LF)	33	32	1	0	0	0	CS2: (1 LF) Col 1 @ NW corner w/ small spall, painted over.
215	3	R/Conc Abutment	(LF)	0	0	0	0	0	0	0
234	3	R/Conc Pier Cap	(LF)	42	40	1	1	0	0	CS2: (1 LF) Ped 5 E. face w/shallow spall with exp steel 3" x 1". CS3: (1 LF) Incip corner spall in bott NW corner of cap (13"l x 8"h x 9"w) w/ rust stains.
390	2	Reinf Conc Wingwalls	(LF)	0	0	0	0	0	0	0
356	1	Steel Fatigue SmFlag	(EA)	0	0	0	0	0	0	0
358	1	Deck Cracking SmFlag	(EA)	0	0	0	0	0	0	0
359	1	Soffit Smart Flag	(EA)	0	0	0	0	0	0	0
363	1	Section Loss SmFlag	(EA)	0	0	0	0	0	0	0



# DELAWARE DEPARTMENT OF TRANSPORTATION

## Bridge Management Section MultiSpan PONTIS Element Report for Span No. 17

Bridge ID: 1748S059

Inspection Date: 3/28/2013

Description: Span 43S (Pier 42S to  
Pier 43S)

ELEM	ENV	DESCRIPTION	UNITS	TOTAL	CS1	CS2	CS3	CS4	CS5	COMMENTS
22	4	P Conc Deck/Rigid Ov	(SF)	0	0	0	0	0	0	0
65	4	Drainage	(EA)	1	1	0	0	0	0	CS1: (1 EA) Scupper and downspout w/ NDN.
300	4	Strip Seal Exp Joint	(LF)	42	0	42	0	0	0	CS2: (42 LF) Packed w/ debris in shldr, active leakage noted and settled (1") or debonded areas. Ig patch (4'w x 9"l) adj to jt in left lane and an area of minor edge spalls along center up to 1' wide x 5" long x 2"d.
321	4	R/Conc Approach Slab	(EA)	0	0	0	0	0	0	0
107	3	Paint Stl Opn Girder	(LF)	411	302	100	9	0	0	CS2: (100 LF) Localized very light spot rust on bottom flanges. CS3: (9 LF) Typ exp & rusted steel to ends of fascia beams and along the interior of BM 6 top fl near the N. end.
331	4	Conc Bridge Railing	(LF)	137	35	100	2	0	0	CS2: (100 LF) Horiz hl cr's thruout both faces of barriers. W. Parapet near S. end inside face with 9"l x 6"h x 1"d corner spall. CS3: (2 LF) Crack w/ rust stains to E. Parapet.
334	4	Metal Rail Coated	(LF)	62	28	34	0	0	0	CS2: (34 LF) 4th splice from S. end w/ two missing fasteners amd 7th splice from S. end w/ two sheared fasteners @ bott. Typ. random splices with blistering around the fasteners. Small areas of missing paint w/ exp metal thruout (no rust).
381	3	Painted Steel Diaphr	(EA)	20	5	15	0	0	0	CS2: (15 EA) Most diaph's have light spot rust.
311	4	Moveable Bearing	(EA)	6	6	0	0	0	0	CS1: (6 EA) Sliding plate brgs @ Pier 43 are w/in limits and heavily greased.
313	4	Fixed Bearing	(EA)	6	6	0	0	0	0	CS1: (6 EA) Pier 42 brgs are heavily greased w/ NDN.
205	3	R/Conc Column	(LF)	34	34	0	0	0	0	NDN
215	3	R/Conc Abutment	(LF)	0	0	0	0	0	0	0
234	3	R/Conc Pier Cap	(LF)	42	41	0	1	0	0	CS3: (1 LF) W. face of Ped 6 w/ 1/8"w map cr's w/ rust and 12"l x 3"h delam @ SW corner.
390	2	Reinf Conc Wingwalls	(LF)	0	0	0	0	0	0	0
356	1	Steel Fatigue SmFlag	(EA)	0	0	0	0	0	0	0
358	1	Deck Cracking SmFlag	(EA)	0	0	0	0	0	0	0
359	1	Soffit Smart Flag	(EA)	0	0	0	0	0	0	0
363	1	Section Loss SmFlag	(EA)	0	0	0	0	0	0	0

## DELAWARE DEPARTMENT OF TRANSPORTATION

*Bridge Management Section*  
*MultiSpan PONTIS Element Report for Span No. 18*

Bridge ID: 1748S059

Inspection Date: 3/28/2013

Description: Span 44S (Pier 43S to  
Pier 44S)

ELEM	ENV	DESCRIPTION	UNITS	TOTAL	CS1	CS2	CS3	CS4	CS5	COMMENTS
22	4	P Conc Deck/Rigid Ov	(SF)	0	0	0	0	0	0	0
65	4	Drainage	(EA)	1	1	0	0	0	0	CS1: (1 EA) Scupper and downspout w/ NDN.
300	4	Strip Seal Exp Joint	(LF)	42	0	42	0	0	0	CS2: (42 LF) Packed w/ debris in shoulder and settled (CS2: (42 LF) Packed w/ debris in shldr and settled (<1/2"d) or debonded areas. Minor debris throughout.
321	4	R/Conc Approach Slab	(EA)	0	0	0	0	0	0	0
107	3	Paint Stl Ogn Girder	(LF)	409	202	200	7	0	0	CS2: (200 LF) Localized areas of very light spot rust. CS3: (7 LF) Rust along top fl of BM 6 @ S. end and typ rust to ends of fascia beams.
331	4	Conc Bridge Railing	(LF)	136	126	0	10	0	0	CS3: (10 LF) HL to fine cracks w/ rust stains in E. outside face & W. inside face of parapets and a spall (1.25'h x 3'l x 2"d) @ N. end of E. Parapet with exposed rusted steel.
334	4	Metal Rail Coated	(LF)	69	33	36	0	0	0	CS2: (36 LF) Some posts w/ blistering around fasteners and small areas of missing paint w/ exp metal thruout (no rust).
381	3	Painted Steel Diaphr	(EA)	20	0	20	0	0	0	CS2: (20 EA) All diaph's have very light spot rust.
311	4	Moveable Bearing	(EA)	6	0	6	0	0	0	CS2: (6 EA) Sliding plate brgs @ pier 43 are over contracted w/ sliding plate overhanging masonry plate @ 65°F. See Photo 23. Plates overhang as follows: Brg 1 = 1/2" Brg 2 = 1/2" Brg 3 = 1" Brg 4 = 7/8" Brg 5 = 1/2" Brg 6 = 1-1/8"
313	4	Fixed Bearing	(EA)	6	6	0	0	0	0	CS1: (6 EA) Pier 44 brgs are heavily greased w/ spot rust.
205	3	R/Conc Column	(LF)	34	34	0	0	0	0	NDN
215	3	R/Conc Abutment	(LF)	0	0	0	0	0	0	0
234	3	R/Conc Pier Cap	(LF)	42	41	1	0	0	0	CS2: (1 LF) Ped 4 W. end N. edge with shallow spall.
390	2	Reinf Conc Wingwalls	(LF)	0	0	0	0	0	0	0
356	1	Steel Fatigue SmFlag	(EA)	0	0	0	0	0	0	0
358	1	Deck Cracking SmFlag	(EA)	0	0	0	0	0	0	0
359	1	Soffit Smart Flag	(EA)	0	0	0	0	0	0	0
363	1	Section Loss SmFlag	(EA)	0	0	0	0	0	0	0

# DELAWARE DEPARTMENT OF TRANSPORTATION

## Bridge Management Section MultiSpan PONTIS Element Report for Span No. 19

Bridge ID: 1748S059

Inspection Date: 3/28/2013

Description: Span 45S (Pier 44S to Pier 45S)

ELEM	ENV	DESCRIPTION	UNITS	TOTAL	CS1	CS2	CS3	CS4	CS5	COMMENTS
22	4	P Conc Deck/Rigid Ov	(SF)	0	0	0	0	0	0	0
65	4	Drainage	(EA)	1	1	0	0	0	0	CS1: (1 EA) Scupper and downspout w/NDN.
300	4	Strip Seal Exp Joint	(LF)	42	0	42	0	0	0	CS2: (42 LF) Packed w/ debris in shoulder, active leakage and settled or debonded areas. Minor edge spalls at W. edge 2'w x 9"l x ½"d.
321	4	R/Conc Approach Slab	(EA)	0	0	0	0	0	0	0
107	3	Paint Stl Opn Girder	(LF)	425	271	150	4	0	0	CS2: (150 LF) Localized very light spot rust on bottom flanges and fasteners. CS3: (4 LF) Typ rust to ends of fascia beams.
331	4	Conc Bridge Railing	(LF)	142	108	2	32	0	0	CS2: (2 LF) Base of E. & W. Parapet @ Pier 45 joint with corner spall up to 14"h x 5"w x 2"d. CS3: (32 LF) Fine cracks w/ rust stains in E & W. Parapet.
334	4	Metal Rail Coated	(LF)	79	45	34	0	0	0	CS2: (34 LF) Some posts w/ blistering around fasteners and random areas of missing paint w/ exp metal (no rust).
381	3	Painted Steel Diaphr	(EA)	20	0	19	1	0	0	CS2: (19 EA) All diaph's have very light spot rust. CS3: (1 EA) Bay 5 @ Pier 45 w/ exp & rusted steel along the top fl.
311	4	Moveable Bearing	(EA)	6	6	0	0	0	0	CS1: (6 EA) Sliding plate brgs @ Pier 45 are w/in limits and greased.
313	4	Fixed Bearing	(EA)	6	6	0	0	0	0	CS1: (6 EA) Pier 44 brgs are heavily greased w/ spot rust.
205	3	R/Conc Column	(LF)	53	53	0	0	0	0	NDN
215	3	R/Conc Abutment	(LF)	0	0	0	0	0	0	0
234	3	R/Conc Pier Cap	(LF)	42	31	3	8	0	0	CS2: (3 LF) Ped 1 E. end S. face with shallow spall. N. face of cap at E. end with random hl map crks. CS3: (8 LF) Horiz hl cr's w/ rust along u/side of E. o/hang, S. face Bay 5 and E. face of Ped 5. N. face E. end with 3'l horiz hl crk with rust stain.
390	2	Reinf Conc Wingwalls	(LF)	0	0	0	0	0	0	0
356	1	Steel Fatigue SmFlag	(EA)	0	0	0	0	0	0	0
358	1	Deck Cracking SmFlag	(EA)	0	0	0	0	0	0	0
359	1	Soffit Smart Flag	(EA)	0	0	0	0	0	0	0
363	1	Section Loss SmFlag	(EA)	0	0	0	0	0	0	0

## DELAWARE DEPARTMENT OF TRANSPORTATION

*Bridge Management Section*  
*MultiSpan PONTIS Element Report for Span No. 20*

Bridge ID: 1748S059

Inspection Date: 3/28/2013

Description: Span 46S (Pier 45S to  
Pier 46S)

ELEM	ENV	DESCRIPTION	UNITS	TOTAL	CS1	CS2	CS3	CS4	CS5	COMMENTS
22	4	P Conc Deck/Rigid Ov	(SF)	0	0	0	0	0	0	0
65	4	Drainage	(EA)	1	0	0	1	0	0	CS3: (1 EA) Scupper clogged.
300	4	Strip Seal Exp Joint	(LF)	42	0	42	0	0	0	CS2: (42 LF) Packed w/ debris in shoulder, active leakage and settled (CS2: (42 LF) Packed w/ debris in shldr, active leakage and settled (<1" or debonded areas. North edge has spall 2'w x 9"l x 3" d. W. end underside of jt at P45 has 1/8" lam rust.
321	4	R/Conc Approach Slab	(EA)	0	0	0	0	0	0	0
107	3	Paint Stl Opn Girder	(LF)	477	348	125	4	0	0	CS2: (125 LF) Localized spot and freckled rust on bottom flanges. CS3: (4 LF) Ends of BMs 1 & 6 w/ exp & rusted steel along top flange.
331	4	Conc Bridge Railing	(LF)	159	72	72	15	0	0	CS2: (72 LF) W. Parapet w/ 1/16" wide horiz. cracks along outside face and few incip spalls @ junction box, vert cr w/ efflo and open/incip spall @ N. end (24"l x 10"h). CS3: (15 LF) HL horiz. cracks w/ rust stains in E. Parapet and 1/8" to 3/16" wide horiz cr's w/ areas of 1/16" displacement along outside face. W. barrier w/ cr's w/ rust @ junction box and spall w/ exp steel near mdspn (5"l x 8"h x 1"d).
334	4	Metal Rail Coated	(LF)	79	41	24	14	0	0	CS2: (24 LF) Four posts w/ missing fasteners, some posts w/ blistering around fasteners, two panels w/ small dents and scattered light freckled rust. Random small areas of missing paint w/ exp metal. CS3: (14 LF) Expansion panel disconnected and bowed out approx. 1/2" @ S. end.
381	3	Painted Steel Diaphr	(EA)	25	0	23	2	0	0	CS2: (23 EA) Very light spot rust on diaph's. Minor dents in top flange of Bay 2 diaph @ Pier 46. CS3: (2 EA) Bays 4 & 5 @ P45 w/ mod. rust on bottom flange.
311	4	Moveable Bearing	(EA)	6	6	0	0	0	0	CS1: (6 EA) Sliding plate brgs @ Pier 45 are w/in limits at 57°F and greased.
313	4	Fixed Bearing	(EA)	6	6	0	0	0	0	CS1: (6 EA) Pier 46 brgs are heavily greased w/ NDN.
205	3	R/Conc Column	(LF)	55	53	2	0	0	0	CS2: (2 LF) Col 2, SE corner w/ delam patch w/ cr's (24"h x 5"l).
215	3	R/Conc Abutment	(LF)	0	0	0	0	0	0	0
234	3	R/Conc Pier Cap	(LF)	42	18	10	14	0	0	CS2: (10 LF) U/side w/ delam patch w/ cr's (19"l x 26"w) @ Col 2 and delam (17"l x 9"w) @ center; top of cap in Bay 1 w/ trans cr w/ assoc delam (37"w x 10"h x 3"l). Ped 6 N. face w/patch w/hl crk. CS3: (14 LF) Spall w/ exp steel & assoc. cracks and delam (40"l x 9"w x 8"h) along E. face of Ped 1 w/ delam con't into S. face (13" w x full ht) and spalled conc. patch w/ exp steel & assoc. incip. spall on N. face, Ped 4 (42"w x 10"h x 7"l) and E. face (15"l x 9"h x 4"w), N. face Bay 5 w/ horiz cr w/ rust w/ assoc delam (32"w x 7"h), u/side of W. o/hang w/ spall w/ exp steel (24"l x 22"w), S. face Bay 1 w/ horiz cr w/ rust @ top. Ped 6 N. face W. end hl crk w/rust.

390	2	Reinf Conc Wingwalls	(LF)	0	0	0	0	0	0	0
356	1	Steel Fatigue SmFlag	(EA)	0	0	0	0	0	0	0
358	1	Deck Cracking SmFlag	(EA)	0	0	0	0	0	0	0
359	1	Soffit Smart Flag	(EA)	0	0	0	0	0	0	0
363	1	Section Loss SmFlag	(EA)	0	0	0	0	0	0	0

## DELAWARE DEPARTMENT OF TRANSPORTATION

*Bridge Management Section*  
*MultiSpan PONTIS Element Report for Span No. 21*

Bridge ID: 1748S059

Inspection Date: 3/28/2013

Description: Span 47S (Pier 46S to  
Pier 47S)

ELEM	ENV	DESCRIPTION	UNITS	TOTAL	CS1	CS2	CS3	CS4	CS5	COMMENTS
22	4	P Conc Deck/Rigid Ov	(SF)	0	0	0	0	0	0	0
65	4	Drainage	(EA)	1	0	0	1	0	0	CS3 (1 EA) Scupper clogged.
300	4	Strip Seal Exp Joint	(LF)	42	0	42	0	0	0	CS2: (42 LF) Packed w/ debris in shoulders, settled (up to 2") or debonded areas and spall w/ exp steel @ W. end of jt (25"w x 5"l x 1.5"d), evidence of leakage and roadway debris on cap. Underside of jt at W. end over Pier 47 is rusted thru.
321	4	R/Conc Approach Slab	(EA)	0	0	0	0	0	0	0
107	3	Paint Stl Opn Girder	(LF)	445	304	129	12	0	0	CS2: (129 LF) Areas of spot or freckled rust mostly on fl's, fasteners thru ends of webs @ P47 w/ light rust. CS3: (12 LF) Ends of BM's 1, 2 & 6 @ P47 w/ area of exp & rusted steel to top fl & bot fl of BM2. Bott fl of BM 1, 2 & 3 @ S. end w/ area of heavy rust.
331	4	Conc Bridge Railing	(LF)	148	51	84	13	0	0	CS2: (84 LF) Three total 4" diam x 3/4"d. corner spalls in E. & W. parapet and 1/16" wide horiz. cracks to outside face of W. parapet. E. barrier w/ 1/16" to 1/8" horiz cr's thruout. Outside face of E. barrier w/ 1/16" to 1/8" horiz cr's thruout w/ random small delam areas and diag cr w/ efflo @ N. end. CS3: (13 LF) E. & W. Parapet w/ cr's w/ rust.
334	4	Metal Rail Coated	(LF)	74	46	28	0	0	0	CS2: (28 LF) One panel w/ two small dents, six splices w/ missing fasteners and some blistering around random fasteners. Random small areas of exp. metal (no rust).
381	3	Painted Steel Diaphr	(EA)	20	0	18	2	0	0	CS2: (18 EA) Light spot or freckled rust on diaph's. CS3: (2 EA) Bay 3 & 5 end diaph's @ P46 w/ exp & rusted steel.
311	4	Moveable Bearing	(EA)	6	5	1	0	0	0	CS1: (5 EA) Sliding plate brgs @ Pier 47 have spot rust. on pl edges and some flaking paint, some blisters along masonry pl's and nuts. Exp. primer on plates. CS2: (1 EA) Brg 5 w/ bent anchor bolt.
313	4	Fixed Bearing	(EA)	6	6	0	0	0	0	CS1: (6 EA) Pier 46 brgs are heavily greased and typ sit atop painted over pack rust.
205	3	R/Conc Column	(LF)	47	43	4	0	0	0	CS2: (4 LF) S. face @ mdht delam (23"h x 12"w) and NE corner @ mdht w/ 1/16" to 1/8" vert cr w/ assoc delam (35"h x 9"l x 5"w).
215	3	R/Conc Abutment	(LF)	0	0	0	0	0	0	0
234	3	R/Conc Pier Cap	(LF)	42	27	1	14	0	0	CS2: (1 LF) Ped 4 E. face w/ delam repair w/ cr's (10"w x 7"h x 25"l). CS3: (14 LF) Delam. & cracked w/ rust on u/side near Col 1 (17"w x 20"l) and (32"w x 22"l), N. face Bay 2 @ bott w/ 1/16" to 1/8" wide horiz cr w/ rust w/ assoc delam (7 LF), Ped 3 E. face w/ cr's w/ rust w/ assoc delam repair (30"l x 6"h x 7"w), S. face Bay 2 w/ horiz cr w/ rust @ bott and horiz cr w/ rust & assoc delam (34"w x 9"h x 4"l) @ top. Ped 2 SE corner w/ delam w/ cr's (16"w x 7"l x 6"h) with rust. Ped 6 W. face w/ delam repair w/ cr's (26"l x 6"h x 6"w),

390	2	Reinf Conc Wingwalls	(LF)	0	0	0	0	0	0	0
356	1	Steel Fatigue SmFlag	(EA)	0	0	0	0	0	0	0
358	1	Deck Cracking SmFlag	(EA)	0	0	0	0	0	0	0
359	1	Soffit Smart Flag	(EA)	0	0	0	0	0	0	0
363	1	Section Loss SmFlag	(EA)	0	0	0	0	0	0	0

# DELAWARE DEPARTMENT OF TRANSPORTATION

## Bridge Management Section MultiSpan PONTIS Element Report for Span No. 22

Bridge ID: 1748S059

Inspection Date: 3/28/2013

Description: Span 48S (Pier 47S to  
Pier 48S)

ELEM	ENV	DESCRIPTION	UNITS	TOTAL	CS1	CS2	CS3	CS4	CS5	COMMENTS
22	4	P Conc Deck/Rigid Ov	(SF)	0	0	0	0	0	0	0
65	4	Drainage	(EA)	1	0	0	1	0	0	CS3: (1 EA) Scupper open but downspout clogged @ bott rubber boot. Blistering w/ rust to pipe along support straps.
300	4	Strip Seal Exp Joint	(LF)	42	0	42	0	0	0	CS2: (42 LF) Packed w/ debris in shoulders and some settled areas (2") and not water tight, active leakage on cap in Bay 2. Bitum patch in rt lane (26" x 18").
321	4	R/Conc Approach Slab	(EA)	0	0	0	0	0	0	0
107	3	Paint Stl Opn Girder	(LF)	444	301	136	7	0	0	CS2: (136 LF) Areas of spot & freckled rust, mostly on bott fl's @ ends, light scattered spot rust to top fl's and fasteners thru ends of webs @ S. end w/ light corrosion. CS3: (7 LF) End of BM's 1 & 6 w/ exp & rusted steel along top fl. BMs 1 & 2 w/ flaking paint w/ rusted steel to edge of bott fl @ S. end.
331	4	Conc Bridge Railing	(LF)	148	78	68	2	0	0	CS2: (68 LF) E. Parapet w/ 1/16" - 1/8" wide horiz. cracks on outside face, spall @ mdspn along bott (12"l x 5"h x 1"d) and spall @ S. end w/ assoc horiz cr (12"l x 5"h) and (12"l x 7"h). CS3: (2 LF) 6"h x 3"w x 1/2"d spall w/ exp. steel and/30"h x 12"w delam w/ assoc. crack w/ rust stains in W. Parapet and 5'l x 10"h x 1/2"d shallow spall w/ exp. steel @ NW end.
334	4	Metal Rail Coated	(LF)	74	44	30	0	0	0	CS2: (30 LF) One panel w/ minor dent, one post w/ missing bott fastener and few areas of blistering around fasteners. Random small areas of missing paint w/ exp metal (no rust).
381	3	Painted Steel Diaphr	(EA)	20	0	20	0	0	0	CS2: (20 EA) Light spot rust on diaphr's.
311	4	Moveable Bearing	(EA)	6	4	2	0	0	0	CS1: (4 EA) Sliding plate brgs @ Pier 47 w/ some peeling paint & spot rust mostly on pl edges, blistering mostly on masonry pl's & nuts. Primer exp on Brg 1 & 2 brg plates. CS2: (2 EA) Brgs 4 & 5 w/ slightly bent anchor bolts.
313	4	Fixed Bearing	(EA)	6	5	1	0	0	0	CS1: (5 EA) Pier 48 brgs are heavily greased w/ spot rust on exp pl's. CS2: (1 EA) Brg 1 with up to 1/2" lam rust.
205	3	R/Conc Column	(LF)	48	48	0	0	0	0	NDN
215	3	R/Conc Abutment	(LF)	0	0	0	0	0	0	0
234	3	R/Conc Pier Cap	(LF)	42	41	1	0	0	0	CS2: (1 LF) E. end, top surface w/ shallow spall and delam (10"w x 39"l).
390	2	Reinf Conc Wingwalls	(LF)	0	0	0	0	0	0	0
356	1	Steel Fatigue SmFlag	(EA)	0	0	0	0	0	0	0
358	1	Deck Cracking SmFlag	(EA)	0	0	0	0	0	0	0
359	1	Soffit Smart Flag	(EA)	0	0	0	0	0	0	0
363	1	Section Loss SmFlag	(EA)	0	0	0	0	0	0	0



## DELAWARE DEPARTMENT OF TRANSPORTATION

*Bridge Management Section*  
*MultiSpan PONTIS Element Report for Span No. 23*

Bridge ID: 1748S059

Inspection Date: 3/28/2013

Description: Span 49S (Pier 48S to  
Pier 49S)

ELEM	ENV	DESCRIPTION	UNITS	TOTAL	CS1	CS2	CS3	CS4	CS5	COMMENTS
22	4	P Conc Deck/Rigid Ov	(SF)	0	0	0	0	0	0	0
65	4	Drainage	(EA)	1	0	1	0	0	0	CS2: (1 EA) Scupper is 95% clogged. Downspout is open and functioning w/ evidence of leakage @ bott sleeve.
300	4	Strip Seal Exp Joint	(LF)	42	0	42	0	0	0	CS2: (42 LF) Packed w/ debris in shoulders, evidence of leakage noted ponding water on cap and settled (1") & debonded areas. S. extrusion gouges and seal is debonded.
321	4	R/Conc Approach Slab	(EA)	0	0	0	0	0	0	0
107	3	Paint Stl Opn Girder	(LF)	354	195	152	7	0	0	CS2: (152 LF) Localized areas of spot or freckled rust on bottom flanges mostly @ ends and random areas of corrosion along the edges of fl's scattered. CS3: (7 LF) BMs 1 & 6 @ P48 & P49 w/ typ exp & rusted steel to fascia top fl. BM 3 w/ flaking paint w/ rust to W. edge of bott fl @ N. end.
331	4	Conc Bridge Railing	(LF)	118	37	47	34	0	0	CS2: (47 LF) 8" diam x 2"d corner spall @ bottom of W. Parapet @ N. end and @ mdspn (9" x 6"). E. Parapet w/ 1/16" to 1/8" wide horiz. cracks along outside face and diaph cr w/ assoc open/incip spall near mdspn (29"1 x 9"h delam and 6"1 x 3"h x 1/2"d spall). CS3: (34 LF) W. Parapet w/ patches w/ HL cracks & rust stains and 5" x 5" x 2"d spall w/ exp steel @ bottom of W. Parapet near N. end. E & W. . barrier w/ horiz cr w/ rust. Outside face of E. barrier w/ vert cr's @ parapet jts w/ lt rust, 3/16" wide horiz cr along top edge.
334	4	Metal Rail Coated	(LF)	74	41	17	16	0	0	CS2: (17 LF) Random light freckled rust and some blistering around fasteners. CS3: (16 LF) Random small areas of missing paint w/ exp metal.
381	3	Painted Steel Diaphr	(EA)	20	0	20	0	0	0	CS2: (20 EA) Light spot or freckled rust on diaph's.
311	4	Moveable Bearing	(EA)	6	3	3	0	0	0	CS1: (3 EA) Sliding plate brgs @ pier 49 are heavily greased w/ exp areas of pl's w/ minor rust. Brgs 4-6 are contracted at 63°F w/ bronze pl flush w/ masonry pl @ Brg 5 and w/in limits @ Brgs 4 & 6. Brg 4 w/ debris and rust below masonry uplifting the pl and Brg 6 w/ up to 3/8" thick active pack rust. CS2: (3 EA) Brgs are overcontracted w/ bronze pl o/hanging masonry pl, most times unevenly at Brg 1 by 1/8" @ E. end to 5/16" @ W. end at 56°F, Brg 2 by 1/4" @ E. end to 3/8" @ W. end at 56°F and Brg 3 w/ 3/16" @ W. end to flush @ E. end at 63°F. Brg 1 w/ up to 3/8" thick active pack rust and Brg 3 w/ minor active pack rust (<1/16").
313	4	Fixed Bearing	(EA)	6	6	0	0	0	0	CS1: (6 EA) Pier 48 brgs are heavily greased w/ some light rust to exp pl edges.
205	3	R/Conc Column	(LF)	49	33	14	2	0	0	CS2: (14 LF) Col 1, S. face @ mdht w/ delam & cracked patches w/ assoc <1"d spalls (22"w x 20"h), (26"w x 26"h), (14"h x 7"w) and (7'h x 25"w) which con't into W. face (33"h x 5'l). CS3: (2 LF) Col 1,

										S. face w/ (14" diam) spall w/ exp steel.
215	3	R/Conc Abutment	(LF)	0	0	0	0	0	0	0
234	3	R/Conc Pier Cap	(LF)	42	27	8	7	0	0	CS1: (27 LF) HL - 1/16" wide diag cr's in N. face Bays 4 & 5 and S. face Bays 4 & 5. CS2: (8 LF) U/side btwn Col 1 & 2 w/ patch w/ cracking thruout. CS3: (7 LF) N. face under Bay 1/ hl horiz. crk with rust stains. U/side @ N. edge near Col 2 w/ spall w/ exp steel (6" diam) and S. face and Ped 2 w/ diag cr w/ rust w/ assoc delam, open/incip spall (4'w x 25"h) in face, (10"h x 15"w x 5"l) in SW corner of ped and (4'w x 5"l) in Bay 1 seat w/ assoc 3/16" wide trans cr.
390	2	Reinf Conc Wingwalls	(LF)	0	0	0	0	0	0	0
356	1	Steel Fatigue SmFlag	(EA)	0	0	0	0	0	0	0
358	1	Deck Cracking SmFlag	(EA)	0	0	0	0	0	0	0
359	1	Soffit Smart Flag	(EA)	0	0	0	0	0	0	0
363	1	Section Loss SmFlag	(EA)	0	0	0	0	0	0	0

## DELAWARE DEPARTMENT OF TRANSPORTATION

*Bridge Management Section*  
*MultiSpan PONTIS Element Report for Span No. 24*

Bridge ID: 1748S059

Inspection Date: 3/28/2013

Description: Span 50S (Pier 49S to  
Pier 50S)

ELEM	ENV	DESCRIPTION	UNITS	TOTAL	CS1	CS2	CS3	CS4	CS5	COMMENTS
22	4	P Conc Deck/Rigid Ov	(SF)	0	0	0	0	0	0	0
65	4	Drainage	(EA)	1	0	0	1	0	0	CS3: (1 EA) Scupper clogged, downspout @ Col. 1 clogged @ top w/ evidence of overflow.
300	4	Strip Seal Exp Joint	(LF)	42	0	42	0	0	0	CS2: (42 LF) Packed w/ debris in shoulder and debonded or settled (up to 1").
321	4	R/Conc Approach Slab	(EA)	0	0	0	0	0	0	0
107	3	Paint Stl Opn Girder	(LF)	558	443	110	5	0	0	CS2: (110 LF) Localized areas of spot or freckled rust on bottom flanges, fl edges and few areas of the top flange. BM 3 w/ area of peeled paint w/ exp primer @ S. end. CS3: (5 LF) Ends of BMs 1 & 6 @ P49 and BM 1 @ P50 w/ typ exp & rusted along fascia top fl and BM 5 w/ small area of flaked paint w/ rust along bot fl edge at N. end.
331	4	Conc Bridge Railing	(LF)	186	8	74	104	0	0	CS2: (74 LF) W. Parapet w/ incip spall (2"l x 10"h), four 4" diam. x 1/2"d spalls @ NW end, 9"l x 7"h x 1/2"d spall and 1/16" to 1/8" wide long. cracks along top of outside face. E. barrier w/ 1/16" to 1/8" horiz cr's thruout. CS3: (104 LF) Spalls up to 1"d w/ exp steel ((4" diam) (6" diam), (12" x 12"), (6" diam) and 43"l x 10"h delam w/ spall w/ exp. steel @ NW end and horiz. crack w/ rust stains in both parapets. W. parapet w/ edge spall @ junction box 2"l x 10"h x 1/2"d w/exp steel. E. barrier outside face w/ ±15'l x up to 1/8" wide horiz cr's w/ rust stains thruout length and areas of crack 1/8" to 1/4" wide. (1/2 span).
334	4	Metal Rail Coated	(LF)	93	66	27	0	0	0	CS2: (27 LF) Few areas w/ minor dents and some blistering around random fasteners. Random small areas of missing paint w/ exp steel (no rust).
381	3	Painted Steel Diaphr	(EA)	25	5	20	0	0	0	CS2: (20 EA) Light spot or freckled rust on most diaph's.
311	4	Moveable Bearing	(EA)	6	3	3	0	0	0	CS1: (3 EA) Sliding plate brgs @ Pier 49 w/ light spot rust mostly on pl edges and are w/in limits at 63°F. Brg 4 w/ more rust than typ. CS2: (3 EA) Brg 1 more mod rust than typ. Slightly bent anchor bolts @ Brgs 2 & 3.
313	4	Fixed Bearing	(EA)	6	6	0	0	0	0	CS1: (6 EA) Pier 50 brgs are heavily greased and typ sit atop a layer of painted over pack rust.
205	3	R/Conc Column	(LF)	50	50	0	0	0	0	NDN
215	3	R/Conc Abutment	(LF)	0	0	0	0	0	0	0
234	3	R/Conc Pier Cap	(LF)	42	32	10	0	0	0	CS2: (10 LF) Shallow open/incip. spall on E. face of Ped. 5 (12"l x 7"h), 1/16" wide diag cr's on S. face Bay 5 and S. face Bays 1 & 2.
390	2	Reinf Conc Wingwalls	(LF)	0	0	0	0	0	0	0
356	1	Steel Fatigue SmFlag	(EA)	0	0	0	0	0	0	0
358	1	Deck Cracking SmFlag	(EA)	0	0	0	0	0	0	0

359	1	Soffit Smart Flag	(EA)	0	0	0	0	0	0	0
363	1	Section Loss SmFlag	(EA)	0	0	0	0	0	0	0

# DELAWARE DEPARTMENT OF TRANSPORTATION

## Bridge Management Section MultiSpan PONTIS Element Report for Span No. 25

Bridge ID: 1748S059

Inspection Date: 3/28/2013

Description: Span 51S (Pier 50S to  
Pier 51S)

ELEM	ENV	DESCRIPTION	UNITS	TOTAL	CS1	CS2	CS3	CS4	CS5	COMMENTS
22	4	P Conc Deck/Rigid Ov	(SF)	0	0	0	0	0	0	0
65	4	Drainage	(EA)	1	0	0	1	0	0	CS3: (1 EA) Scupper and downspout clogged. Scupper has vegetation growing from it.
300	4	Strip Seal Exp Joint	(LF)	42	0	42	0	0	0	CS2: (42 LF) Packed w/ debris in shoulder, areas settled (up to 1 1/2") or debonded and joint leaks in Bay 1. Underside of jt at W. end is rusted thru.
321	4	R/Conc Approach Slab	(EA)	0	0	0	0	0	0	0
107	3	Paint Stl Opn Girder	(LF)	414	298	114	2	0	0	CS2: (114 LF) Few small areas of very light spot rust on bottom flanges, ends of beams @ brgs and u/side of bottom flange. N. end of BM 1 @ P51 w/ top flange w/ spot rust at joint. CS3: (2 LF) BM 1 @ Piers w/ exp & rusted steel to fascia top fl.
331	4	Conc Bridge Railing	(LF)	138	63	51	24	0	0	CS2: (51 LF) 6"l x 5"h x 1/2"d corner spall @ base of NW end and E. Parapet w/ horiz cr across the top of exterior face. CS3: (24 LF) E. Parapet w/ HL horiz. cracks w/ rust stains, one crack in W. Parapet w/ rust. N. end of E. barrier w/ 1/8" w crack along top w/ rust and assoc delam/incip spall (5 LF). Ext face of E. barrier w/ vert cr's w/ light rust @ parapet jts.
334	4	Metal Rail Coated	(LF)	69	39	30	0	0	0	CS2: (30 LF) Panel w/ two small dents and random posts w/ blistering around fasteners. Random small areas of missing paint w/ exp steel (no rust).
381	3	Painted Steel Diaphr	(EA)	20	0	20	0	0	0	CS2: (20 EA) Light spot or freckled rust on diaph's.
311	4	Moveable Bearing	(EA)	6	6	0	0	0	0	CS1: (6 EA) Sliding plate brgs @ pier 51 are heavily greased, some sit atop painted pack rust btwn pl's. Brg 5 is fully contracted w/ bronze pl flush w/ masonry pl.
313	4	Fixed Bearing	(EA)	6	6	0	0	0	0	CS1: (6 EA) Pier 50 brgs are heavily greased and some sit atop painted over 1/8" thick pack rust.
205	3	R/Conc Column	(LF)	43	43	0	0	0	0	NDN
215	3	R/Conc Abutment	(LF)	0	0	0	0	0	0	0
234	3	R/Conc Pier Cap	(LF)	42	42	0	0	0	0	CS1: (42 LF) Cap w/ random hl vert crks up to 2' h on N. and S. faces throughout.
390	2	Reinf Conc Wingwalls	(LF)	0	0	0	0	0	0	0
356	1	Steel Fatigue SmFlag	(EA)	0	0	0	0	0	0	0
358	1	Deck Cracking SmFlag	(EA)	0	0	0	0	0	0	0
359	1	Soffit Smart Flag	(EA)	0	0	0	0	0	0	0
363	1	Section Loss SmFlag	(EA)	0	0	0	0	0	0	0

## DELAWARE DEPARTMENT OF TRANSPORTATION

*Bridge Management Section*  
*MultiSpan PONTIS Element Report for Span No. 26*

Bridge ID: 1748S059

Inspection Date: 3/28/2013

Description: Span 52S (Pier 51S to  
Pier 52S)

ELEM	ENV	DESCRIPTION	UNITS	TOTAL	CS1	CS2	CS3	CS4	CS5	COMMENTS
22	4	P Conc Deck/Rigid Ov	(SF)	0	0	0	0	0	0	0
65	4	Drainage	(EA)	1	1	0	0	0	0	CS1: (1 EA) Scupper open, downspout open.
300	4	Strip Seal Exp Joint	(LF)	42	0	42	0	0	0	CS2: (42 LF) Packed w/ debris most of length and evidence of leakage @ ends. Seal is settled up to 1 $\frac{1}{2}$ ".
321	4	R/Conc Approach Slab	(EA)	0	0	0	0	0	0	0
107	3	Paint Stl Opn Girder	(LF)	414	371	40	3	0	0	CS2: (40 LF) Localized areas of spot or freckled rust on bottom flanges and u/side of bottom flanges @ piers in areas of previous pitting. Typ areas of minor edge corrosion along fl's and top fl w/ scattered light rust stains. CS3: (3 LF) BM's 1 & 6 @ Pier 52 and BM 1 @ Pier 51 w/ exp & rusted steel along fascia top fl. BM 4 w/ 3"w x 1" x 1/8"d gouge on of bot flg (W. side) approx. 10' from P51 (painted over).
331	4	Conc Bridge Railing	(LF)	138	12	96	30	0	0	CS2: (96 LF) W. barrier w/ 6"h x 2"w x 1/2"d spall N of junction box, W. barrier w/ spall @ junction box (4"l x 9"h x 1"d w/exp steel) and E. barrier w/ 1/16" wide horiz cr's thruout. E. parapet w/ 1/8" wide horiz. cracks thruout exterior face. CS3: (30 LF) Few cr's w/ rust in E. barrier and N. end of W. barrier. Previously noted crk/spall on ext face of E. barrier has been patched.
334	4	Metal Rail Coated	(LF)	69	37	31	0	1	0	CS2: (31 LF) One minor dent and random posts w/ blistering around fasteners. Random areas of missing paint w/ exp metal. CS4: (1 LF) Hole in Panel 5 (3 $\frac{1}{2}$ " x 1-3/8"). See Photo 20.
381	3	Painted Steel Diaphr	(EA)	20	0	20	0	0	0	CS2: (20 EA) All diaph's w/ light spot or freckled rust.
311	4	Moveable Bearing	(EA)	6	3	0	3	0	0	CS1: (3 EA) Sliding plate brgs @ Pier 51 are heavily greased w/ NDN. Typ brgs are expanded to fully expanded and Brgs 1, 4, 5 & 6 bronze pl are flush w/ masonry pl at 40°. CS3: (3 EA) Brgs 1 & 6 sit on up to 1/2" pack rust w/ gaps btwn pl's filled in w/ grease (appear frozen). Brg 3 is over-expanded at 40°F and overhangs masonry plate 1/8". See Photo 24.
313	4	Fixed Bearing	(EA)	6	6	0	0	0	0	CS1: (6 EA) Pier 52 brgs are heavily greased w/ minor pack rust btwn some pl's.
205	3	R/Conc Column	(LF)	41	40	0	1	0	0	CS3: (1 LF) Col 1, S. face @ bott w/ 2 spalls w/ exp steel (6" diam each).
215	3	R/Conc Abutment	(LF)	0	0	0	0	0	0	0
234	3	R/Conc Pier Cap	(LF)	42	39	1	2	0	0	CS2: (1 LF) Ped 4, E. face with 1/16"w map crks. CS3: (2 LF) Ped 1 E. face with 2'1 x 7"h x 4"d spall with exp. steel with rust. Ped 6, W. face w/ shallow spall w/ exp steel w/ rust (9"l x 7"h).
390	2	Reinf Conc Wingwalls	(LF)	0	0	0	0	0	0	0
356	1	Steel Fatigue SmFlag	(EA)	0	0	0	0	0	0	0
358	1	Deck Cracking SmFlag	(EA)	0	0	0	0	0	0	0

359	1	Soffit Smart Flag	(EA)	0	0	0	0	0	0	0
363	1	Section Loss SmFlag	(EA)	0	0	0	0	0	0	0

## DELAWARE DEPARTMENT OF TRANSPORTATION

*Bridge Management Section*  
*MultiSpan PONTIS Element Report for Span No. 27*

Bridge ID: 1748S059

Inspection Date: 3/28/2013

Description: Span 53S (Pier 52S to  
Pier 53S)

ELEM	ENV	DESCRIPTION	UNITS	TOTAL	CS1	CS2	CS3	CS4	CS5	COMMENTS
22	4	P Conc Deck/Rigid Ov	(SF)	0	0	0	0	0	0	0
65	4	Drainage	(EA)	1	0	0	1	0	0	CS3: (1 EA) Scupper and downspout clogged and leaking at the bottom sleeves with ponding around the base of the column.
300	4	Strip Seal Exp Joint	(LF)	42	0	42	0	0	0	CS2: (42 LF) Packed w/ debris in shoulder, active leakage in Bay 3, some small tears and debonded or settled (1") areas.
321	4	R/Conc Approach Slab	(EA)	0	0	0	0	0	0	0
107	3	Paint Stl Opn Girder	(LF)	414	396	14	4	0	0	CS2: (14 LF) Ends of beams w/ light freckled rust to u/side of bottom flange, random beams and ends of Beam 6 @ S. end w/ freckled rust. CS3: (4 LF) BMs 1 & 6 @ both ends w/ typ exp & rusted steel along fascia top fl.
331	4	Conc Bridge Railing	(LF)	138	17	65	56	0	0	CS2: (65 LF) Incip. spalls in both E. & W. Parapet. Note that the incip. spall on E. Parapet is in the rear face. E. Parapet w/ > 1/16" wide horiz. cracks along both faces. CS3: (56 LF) 1/8" max. wide vert. crack w/ rust stains @ NE & SE corners. E. & W. Parapets w/ HL horiz. and vert. cracks w/ rust stains. W. barrier w/ spall @ N. end (9" diam. x 1/2" d with exp. steel). Previously noted E. barrier crks w/spalls patched.
334	4	Metal Rail Coated	(LF)	69	45	24	0	0	0	CS2: (24 LF) Few posts w/ blistering around fasteners. Random small areas of missing paint w/ exp metal (no rust).
381	3	Painted Steel Diaphr	(EA)	20	2	18	0	0	0	CS2: (18 EA) Most diaph's w/ light spot or freckled rust.
311	4	Moveable Bearing	(EA)	6	0	6	0	0	0	CS2: (6 EA) Sliding plate brgs @ Pier 53 are heavily greased w/ painted over pack rust and areas of exp pl's w/ minor rust. Brg 1 w/ some active pack btwn pl's, up to 1/4" thick. All brgs are overcontracted @ 45 degrees and moving unevenly w/ bronze pl o/hanging masonry pl @ Brg 1 by 1/2" @ E. and 1-5/16" @ W. end; Brg 2 by 1-3/8" @ W. and 7/8" @ E. end; Brg 3 by 1/2" @ W. and 1-5/16" @ E. end; Brg 4 by 1/2" @ W. and 1-3/16" @ E. end; Brg 5 moves even w/ 1/2" o/hang and Brg 6 by 1/2" @ W. end and 15/16" @ E. end.
313	4	Fixed Bearing	(EA)	6	6	0	0	0	0	CS1: (6 EA) Pier 52 brgs are heavily greased w/ minor pack rust btwn some pl's.
205	3	R/Conc Column	(LF)	41	41	0	0	0	0	NDN
215	3	R/Conc Abutment	(LF)	0	0	0	0	0	0	0
234	3	R/Conc Pier Cap	(LF)	42	41	0	1	0	0	CS3: (1 LF) Ped 4, W. face w/ delam patch w/ horiz cr w/ rust.
390	2	Reinf Conc Wingwalls	(LF)	0	0	0	0	0	0	0
356	1	Steel Fatigue SmFlag	(EA)	0	0	0	0	0	0	0
358	1	Deck Cracking SmFlag	(EA)	0	0	0	0	0	0	0
359	1	Soffit Smart Flag	(EA)	0	0	0	0	0	0	0
363	1	Section Loss SmFlag	(EA)	0	0	0	0	0	0	0





## DELAWARE DEPARTMENT OF TRANSPORTATION

*Bridge Management Section*  
*MultiSpan PONTIS Element Report for Span No. 28*

Bridge ID: 1748S059

Inspection Date: 3/28/2013

Description: Span 54S (Pier 53S to  
Pier 54S)

ELEM	ENV	DESCRIPTION	UNITS	TOTAL	CS1	CS2	CS3	CS4	CS5	COMMENTS
22	4	P Conc Deck/Rigid Ov	(SF)	0	0	0	0	0	0	0
65	4	Drainage	(EA)	1	0	0	1	0	0	CS3: (1 EA) Scupper open and downspout clogged and overflowing @ top.
300	4	Strip Seal Exp Joint	(LF)	42	0	42	0	0	0	CS2: (42 LF) Packed w/ debris in shoulder; active leakage at Ped 4 and settled (up to 1/2") or debonded areas.
321	4	R/Conc Approach Slab	(EA)	0	0	0	0	0	0	0
107	3	Paint Stl Opn Girder	(LF)	414	324	80	10	0	0	CS2: (80 LF) Ends of beams @ piers w/ cluster of freckled rust, BM 3 w/ more than typ, few beams w/ light freckled rust along edges of flange & cover plate @ random locations, Light stains on top fl's of BMs 1 to 4 and scattered freckles along bott fl's thruout. CS3: (10 LF) BM 1 @ N. end w/ paint peeled exposing base metal, typ rust to fascia top fl @ N. end and rusted interior top fl along S. end. BM 4 w/ flaking paint w/ rusted steel along N. end top fl.
331	4	Conc Bridge Railing	(LF)	138	49	60	29	0	0	CS2: (60 LF) E. barrier w/ base spall near S. end 18"l x 6"h x 1"d. W. barrier w/ 1/16" to 1/8" wide horiz cr along bott, N. end horiz cr has efflo, spall near mdspan 10" x 8" x 1/2"d and 6"h x 3"w x 1/2"d spall w/delam @ N. end. Outside face w/ numerous 1/16" to 1/8" wide cracks. CS3: (29 LF) 1/8" max. wide cracks w/ rust stains in E. Parapet interior. W. barrier horiz cr w/ few rust spots.
334	4	Metal Rail Coated	(LF)	69	45	24	0	0	0	CS2: (24 LF) Few panels w/ blistering around some fasteners. Random small areas of missing paint w/ exp metal (no rust).
381	3	Painted Steel Diaphr	(EA)	20	1	18	1	0	0	CS2: (18 EA) Most diaph's w/ light spot or freckled rust. CS3: (1 EA) Bay 4, interm diaph @ N. end w/ area of exp & rusted steel.
311	4	Moveable Bearing	(EA)	6	4	2	0	0	0	CS1: (4 EA) Sliding plate brgs @ Pier 53 are heavily greased w/ minor rust to exp areas of pl's and typ painted over pack rust. Brgs 1 & 3 are expanded w/in limits and Brgs 2 & 5 are expanded w/ bronze pl flush w/ masonry pl at 44°F. CS2: (2 EA) Brgs 4 & 6 are overexpanded at 44°F w/ bronze pl o/hanging load pl at Brg 4 by 3/8" and Brg 6 by 1/4".
313	4	Fixed Bearing	(EA)	6	6	0	0	0	0	CS1: (6 EA) Pier 54 brgs are heavily greased w/ areas of exp pl's w/ minor rust and typ painted over pack rust. Brg 1 w/ active pack btwn pl's.
205	3	R/Conc Column	(LF)	42	42	0	0	0	0	NDN
215	3	R/Conc Abutment	(LF)	0	0	0	0	0	0	0
234	3	R/Conc Pier Cap	(LF)	42	39	0	3	0	0	CS3: (3 LF) S. face of Ped 3 w/ 6" diam shallow spall and E. end w/ horiz cr w/ assoc delam. Ped 6 with 35"l x 6"h x 4"d spall w/exp steel with CS3: (3 LF) S. face of Ped 3 w/ 6" diam shallow spall and E. end w/ horiz cr w/ assoc delam. Ped 6 with 35"l x 6"h x 4"d spall w/exp steel with CS3: (3 LF) S. face of Ped 3 w/ 6" diam shallow spall and E. end w/ horiz cr w/

										assoc delam. Ped 6 with 35"l x 6"h x 4"d spall w/exp steel with CS3: (3 LF) S. face of Ped 3 w/ 6" diam shallow spall and E. end w/ horiz cr w/ assoc delam. Ped 6 with 35"l x 6"h x 4"d spall w/exp steel with <1/16"d section loss. See Photo 25.
390	2	Reinf Conc Wingwalls	(LF)	0	0	0	0	0	0	0
356	1	Steel Fatigue SmFlag	(EA)	0	0	0	0	0	0	0
358	1	Deck Cracking SmFlag	(EA)	0	0	0	0	0	0	0
359	1	Soffit Smart Flag	(EA)	0	0	0	0	0	0	0
363	1	Section Loss SmFlag	(EA)	0	0	0	0	0	0	0

# DELAWARE DEPARTMENT OF TRANSPORTATION

## Bridge Management Section MultiSpan PONTIS Element Report for Span No. 29

Bridge ID: 1748S059

Inspection Date: 3/28/2013

Description: Span 55S (Pier 54S to  
Pier 55S)

ELEM	ENV	DESCRIPTION	UNITS	TOTAL	CS1	CS2	CS3	CS4	CS5	COMMENTS
22	4	P Conc Deck/Rigid Ov	(SF)	0	0	0	0	0	0	0
65	4	Drainage	(EA)	1	0	0	1	0	0	CS3: (1 EA) Scupper and downspout are clogged.
300	4	Strip Seal Exp Joint	(LF)	42	0	42	0	0	0	CS2: (42 LF) Packed w/ debris in shoulders, areas (settled up to 2 $\frac{1}{2}$ " ) or debonded and armor w/ gouges and minor edge spalls up to 10" w x 4" l x $\frac{1}{2}$ " d to adj deck. Leakage noted thruout all bays w/ debris accum on cap. Right lane has 9" l section of missing extrusion. See Photo 18.
321	4	R/Conc Approach Slab	(EA)	0	0	0	0	0	0	0
107	3	Paint Stl Opn Girder	(LF)	414	393	20	1	0	0	CS2: (20 LF) Localized freckled rust. CS3: (1 LF) N. end of BM 1 w/ exp & rusted steel along fascia top flange.
331	4	Conc Bridge Railing	(LF)	138	55	49	34	0	0	CS2: (49 LF) E. Parapet w/ up to 1/8" wide cracks along outside face, 1/16" horiz cr's thruout inside face and a base spall (1SF). W. barrier, N. end inside face w/ 6" diam x 1 $\frac{1}{2}$ " d spall. CS3: (34 LF) W. barrier w/ delam and spall (7" x 13") just S. of mdsprn w/ assoc crack w/ rust stains, 3" diam x 1" d spall w/ rust @ mdsprn and random cr's w/ rust thruout. Ext face of E. barrier w/ 3/16" wide horiz cr (20 LF).
334	4	Metal Rail Coated	(LF)	69	35	34	0	0	0	CS2: (34 LF) Scattered patches of peeling paint and a few posts w/ blistering around fasteners. Random small areas of missing paint w/ exp metal (not rusted).
381	3	Painted Steel Diaphr	(EA)	20	1	18	1	0	0	CS2: (18 EA) Several diaph's w/ light spot or freckled rust. CS3: (1 EA) Bay 3, N. end interm diaph w/ area of exp & rusted steel.
311	4	Moveable Bearing	(EA)	6	6	0	0	0	0	CS1: (6 EA) Sliding plate brgs @ Pier 55 are heavily greased w/ NDN, most appear neutral @ 40°F.
313	4	Fixed Bearing	(EA)	6	6	0	0	0	0	CS1: (6 EA) Pier 54 brgs are heavily greased w/ exposed areas of pl's w/ light spot rust and painted over pack rust typ.
205	3	R/Conc Column	(LF)	37	37	0	0	0	0	NDN
215	3	R/Conc Abutment	(LF)	0	0	0	0	0	0	0
234	3	R/Conc Pier Cap	(LF)	42	41	0	1	0	0	CS3: (1 LF) Ped 1, E. face w/ open/incip spall w/ exp steel, vert cr w/ rust (8" diam).
390	2	Reinf Conc Wingwalls	(LF)	0	0	0	0	0	0	0
356	1	Steel Fatigue SmFlag	(EA)	0	0	0	0	0	0	0
358	1	Deck Cracking SmFlag	(EA)	0	0	0	0	0	0	0
359	1	Soffit Smart Flag	(EA)	0	0	0	0	0	0	0
363	1	Section Loss SmFlag	(EA)	0	0	0	0	0	0	0

## DELAWARE DEPARTMENT OF TRANSPORTATION

*Bridge Management Section*  
*MultiSpan PONTIS Element Report for Span No. 30*

Bridge ID: 1748S059

Inspection Date: 3/28/2013

Description: Span 56S (Pier 55S to  
Pier 56S)

ELEM	ENV	DESCRIPTION	UNITS	TOTAL	CS1	CS2	CS3	CS4	CS5	COMMENTS
22	4	P Conc Deck/Rigid Ov	(SF)	0	0	0	0	0	0	0
65	4	Drainage	(EA)	1	0	0	1	0	0	CS3: (1 EA) Scupper and downspout are clogged.
300	4	Strip Seal Exp Joint	(LF)	42	42	0	0	0	0	CS1: (42 LF) Packed w/ debris @ shoulders. Minor debris throughout.
321	4	R/Conc Approach Slab	(EA)	0	0	0	0	0	0	0
107	3	Paint Stl Opn Girder	(LF)	486	440	37	9	0	0	CS2: (37 LF) Light spot rust to random areas of top fl's and edges of bott fl's and scattered areas of light freckled rust mostly along u/side of bott fl's @ ends, some bott fl's w/ flaked paint w/ exp primer @ BM's 1 & 6, fasteners thru S. end of webs w/ light rust. CS3: (9 LF) Ends of BM's 1 & 6 w/ typ exp & rusted steel to fascia top fl, BM 5 w/ few areas of paint chips on bott fl w/ exp & rusted steel.
331	4	Conc Bridge Railing	(LF)	162	109	30	23	0	0	CS2: (30 LF) E. Parapet w/ 1/16" to 1/8" wide horiz. cracks along outisde face and 1/16" wide horiz cr's thruout inside face and W. barrier w/ vert cr w/ efflo. CS3: (23 LF) 1/16" wide horiz. cracks @ bottom SW corner w/ light rust stains and few horiz and vert cr's w/ rust stains thruout W. barrier, E. barrier w/ vert HL cr w/ rust @ N. end and W. parapet outside face w/ HL horiz. cracks w/ rust stains and both barriers w/ vert cr's @ parapet jts w/ lt rust.
334	4	Metal Rail Coated	(LF)	13	10	3	0	0	0	CS2: (3 LF) Random posts w/ blistering around some fasteners.
381	3	Painted Steel Diaphr	(EA)	25	4	20	1	0	0	CS2: (20 EA) Several interior diaph's w/ light spot to freckled rust and small kink in top flange Bay 2 @ Pier 56. CS3: (1 EA) Bay 3 center interm diaph w/ area of exp & rusted steel.
311	4	Moveable Bearing	(EA)	6	6	0	0	0	0	CS1: (6 EA) Sliding plate brgs @ Pier 55 are w/in limits and have spot rust mostly on pl edges w/ flaked paint & minor blisters mostly on masonry pl's & nuts.
313	4	Fixed Bearing	(EA)	6	6	0	0	0	0	CS1: (6 EA) Pier 56 brgs are heavily greased w/ light spot rust on exp pl edges, mostly on fascia brgs.
205	3	R/Conc Column	(LF)	30	30	0	0	0	0	NDN
215	3	R/Conc Abutment	(LF)	0	0	0	0	0	0	0
234	3	R/Conc Pier Cap	(LF)	42	40	2	0	0	0	CS2: (2 LF) Area spalled & delam w/ cr's on top of So. face and S. end of brg. Ped. 2 (12"l x 8"h x 1"d spall and 18"l x 8"h delam). N. edge @ top under Bay 3 w/ HL horiz cr & trans cr in seat w/ assoc delam (32"w x 5"h x 5"l). S. face under Bay 5 with 8"l x 6"h x 2"d spall.
390	2	Reinf Conc Wingwalls	(LF)	0	0	0	0	0	0	0
356	1	Steel Fatigue SmFlag	(EA)	0	0	0	0	0	0	0
358	1	Deck Cracking SmFlag	(EA)	0	0	0	0	0	0	0
359	1	Soffit Smart Flag	(EA)	0	0	0	0	0	0	0

363	1	Section Loss SmFlag	(EA)	0	0	0	0	0	0	0
-----	---	------------------------	------	---	---	---	---	---	---	---

# DELAWARE DEPARTMENT OF TRANSPORTATION

## Bridge Management Section MultiSpan PONTIS Element Report for Span No. 31

Bridge ID: 1748S059

Inspection Date: 3/28/2013

Description: Span 57S (Pier 56S to  
Pier 57S)

ELEM	ENV	DESCRIPTION	UNITS	TOTAL	CS1	CS2	CS3	CS4	CS5	COMMENTS
22	4	P Conc Deck/Rigid Ov	(SF)	0	0	0	0	0	0	0
65	4	Drainage	(EA)	1	0	1	0	0	0	CS2: (1 EA) Scupper open and downspout w/ evidence of leakage @ bott. Top of dwmspt pipe is rusted.
300	4	Strip Seal Exp Joint	(LF)	42	0	42	0	0	0	CS2: (42 LF) Packed w/ debris in shoulders, areas settled (up to 2") or debonded and torn throughout and active leaking w/ ponding on cap and debris on seats.
321	4	R/Conc Approach Slab	(EA)	0	0	0	0	0	0	0
107	3	Paint Stl Opn Girder	(LF)	486	471	15	0	0	0	CS1: (471 LF) Previously noted chalking and spot rust have been painted over. CS2: (15 LF) Previously noted rust at BMs 1 & 6 painted over. Fasteners through N. end of webs with light corrosion.
331	4	Conc Bridge Railing	(LF)	162	22	91	49	0	0	CS2: (91 LF) 4" diam x 1"d corner spall @ bottom of W. Parapet at N. end and both parapets outside face w/ 1/16" to 1/8" wide horiz crack. E. barrier w/ vert cr w/ efflo @ N. end. CS3: (49 LF) 1/16" wide horiz. cracks along E. Parapet w/ rust stains at N. end. W. barrier w/ vert & horiz cr's w/ light rust staining. Outside face of E. barrier @ N. end w/ 1/4" wide horiz cr w/ 1/16" displacement and assoc spall (12"l x 4"h x 2"d) and 1/16" to 1/8" wide horiz crack w/ few spots of light rust.
334	4	Metal Rail Coated	(LF)	0	0	0	0	0	0	0
381	3	Painted Steel Diaphr	(EA)	25	2	21	2	0	0	CS2: (21 EA) Most diaph's w/ light spot rust. CS3: (2 EA) Bay 1 interm diaph's w/ area of exp & rusted steel.
311	4	Moveable Bearing	(EA)	6	5	1	0	0	0	CS1: (5 EA) Sliding plate brgs @ Pier 57 are w/in limits and have spot rust mostly to pl edges, minor blisters along masonry pl's and flaking paint, esp. on anchor bolts. CS2: (1 EA) Brg 2, W. anchor bolt nut is not tight against the masonry plate by 1/8" and is frozen on the bolt threads and is slightly bent.
313	4	Fixed Bearing	(EA)	6	6	0	0	0	0	CS1: (6 EA) Pier 56 brgs are heavily greased w/ some light rust to exp areas of pl's, mostly on fascia brgs.
205	3	R/Conc Column	(LF)	24	24	0	0	0	0	NDN
215	3	R/Conc Abutment	(LF)	0	0	0	0	0	0	0
234	3	R/Conc Pier Cap	(LF)	42	41	1	0	0	0	CS2: (1 LF) E. end of cap, top surface w/ spall. S. face with random HL map crks.
390	2	Reinf Conc Wingwalls	(LF)	0	0	0	0	0	0	0
356	1	Steel Fatigue SmFlag	(EA)	0	0	0	0	0	0	0
358	1	Deck Cracking SmFlag	(EA)	0	0	0	0	0	0	0
359	1	Soffit Smart Flag	(EA)	0	0	0	0	0	0	0
363	1	Section Loss SmFlag	(EA)	0	0	0	0	0	0	0

## DELAWARE DEPARTMENT OF TRANSPORTATION

*Bridge Management Section*  
*MultiSpan PONTIS Element Report for Span No. 32*

Bridge ID: 1748S059

Inspection Date: 3/28/2013

Description: Span 58S (Pier 57S to  
Pier 58S)

ELEM	ENV	DESCRIPTION	UNITS	TOTAL	CS1	CS2	CS3	CS4	CS5	COMMENTS
22	4	P Conc Deck/Rigid Ov	(SF)	0	0	0	0	0	0	0
65	4	Drainage	(EA)	1	0	0	1	0	0	CS3: (1 EA) Scupper is clogged w/ 3" x 2" open area and downspout w/ evidence of leakage @ bottom & evidence of overflowing @ top. Dwnspt pipe is rusted @ top and a section is missing at the bottom.
300	4	Strip Seal Exp Joint	(LF)	42	0	42	0	0	0	CS2: (42 LF) Packed w/ debris in shoulder, heavy debris in the lanes and evidence of leakage throughout. Underside of joint over P57 W. end with 100% section loss.
321	4	R/Conc Approach Slab	(EA)	0	0	0	0	0	0	0
107	3	Paint Stl Opn Girder	(LF)	486	460	21	5	0	0	CS2: (21 LF) Light spot rust on bottom flanges @ N. end & BM 3 @ S. end and top fl's of fascias. Fasteners thru S. end of web w/ light corrosion. CS3: (5 LF) S. end of BM 6 and N. end of BM 1 w/ exp & rusted steel along fascia top fl, BM 3 w/ rusted gouge N. end of web and BM 1 w/ area of freckled rust flaking paint on bott fl near N. end.
331	4	Conc Bridge Railing	(LF)	162	131	30	1	0	0	CS2: (30 LF) 1/16" to 1/8" wide cr's in E. Parapet outside face. CS3: (1 LF) E. Parapet S. end with HL map cracks with rust stains.
334	4	Metal Rail Coated	(LF)	0	0	0	0	0	0	0
381	3	Painted Steel Diaphr	(EA)	25	13	12	0	0	0	CS2: (12 EA) Several intermediate and a few end diaph's w/ light spot rust.
311	4	Moveable Bearing	(EA)	6	6	0	0	0	0	CS1: (6 EA) Sliding plate brgs @ Pier 57 are w/in limits at 55°F and have spot rust mostly on pl edges, minor blisters on masonry pl's or nuts and areas of flaked paint. W. anchor bolt of Brg 4 does not project beyond the nut, the top is flush w/ nut.
313	4	Fixed Bearing	(EA)	6	6	0	0	0	0	CS1: (6 EA) Pier 58 brgs are heavily greased w/ spot rust. Brg 6 has 1/8" pack rust under east end of brg.
205	3	R/Conc Column	(LF)	22	22	0	0	0	0	NDN
215	3	R/Conc Abutment	(LF)	0	0	0	0	0	0	0
234	3	R/Conc Pier Cap	(LF)	42	42	0	0	0	0	NDN
390	2	Reinf Conc Wingwalls	(LF)	0	0	0	0	0	0	0
356	1	Steel Fatigue SmFlag	(EA)	0	0	0	0	0	0	0
358	1	Deck Cracking SmFlag	(EA)	0	0	0	0	0	0	0
359	1	Soffit Smart Flag	(EA)	0	0	0	0	0	0	0
363	1	Section Loss SmFlag	(EA)	0	0	0	0	0	0	0



## DELAWARE DEPARTMENT OF TRANSPORTATION

*Bridge Management Section*  
*MultiSpan PONTIS Element Report for Span No. 33*

Bridge ID: 1748S059

Inspection Date: 3/28/2013

Description: Span 59S (Pier 58S to  
Pier 59S)

ELEM	ENV	DESCRIPTION	UNITS	TOTAL	CS1	CS2	CS3	CS4	CS5	COMMENTS
22	4	P Conc Deck/Rigid Ov	(SF)	0	0	0	0	0	0	0
65	4	Drainage	(EA)	1	0	0	1	0	0	CS3: (1 EA) Scupper and downspout are clogged and overflowing @ top.
300	4	Strip Seal Exp Joint	(LF)	42	0	42	0	0	0	CS2: (42 LF) Packed w/ debris in shoulders. Seal is settled (up to 2"), torn & debonded in lanes, missing jt mat'l and active water leakage w/ ponding water on seat. Underside of joint at W. end w/ lam. rust.
321	4	R/Conc Approach Slab	(EA)	0	0	0	0	0	0	0
107	3	Paint Stl Opn Girder	(LF)	552	425	120	7	0	0	CS2: (120 LF) Very light spot rust on flanges, fasteners thru webs w/ light corrosion, edges of some fl's w/ random spots of rust, and scattered areas of light freckled rust. CS3: (7 LF) Area of chipped paint exposing the steel cover plate of BM 3 @ N. end, BM 2 w/ rusted gouge and S. end of BM 6 w/ typ exp & rusted steel along fascia top fl. U/side bott fl of BM 1 w/ area of blistering w/ freckled rust and BM 3 w/ area of fl w/ flaked paint w/ rust along edge.
331	4	Conc Bridge Railing	(LF)	184	89	92	3	0	0	CS2: (92 LF) 1/16" to 1/8" wide cr's in E. Parapet for full length on outside face. CS3: (3 LF) HL cracks w/ rust stains in W. barrier.
334	4	Metal Rail Coated	(LF)	0	0	0	0	0	0	0
381	3	Painted Steel Diaphr	(EA)	25	11	14	0	0	0	CS2: (14 EA) Several diaph's w/ light spot rust. Bay 4 @ Pier 59, top flange has two 3/8" deep kinks. Bay 5 diaph @ P58 w/ slight kink in the top flange.
311	4	Moveable Bearing	(EA)	6	6	0	0	0	0	CS1: (6 EA) Sliding plate brgs @ Pier 59 are w/in limits and have spot rust mostly on pl edges, flaking paint and minor blistering to masonry pl. Brgs 4 & 6 w/ heavy grease.
313	4	Fixed Bearing	(EA)	6	6	0	0	0	0	CS1: (6 EA) Pier 58 brgs are heavily greased w/ minor rust along bottom edges.
205	3	R/Conc Column	(LF)	20	20	0	0	0	0	NDN
215	3	R/Conc Abutment	(LF)	0	0	0	0	0	0	0
234	3	R/Conc Pier Cap	(LF)	42	40	2	0	0	0	CS2: (2 LF) Ped 2 E. & W. face w/ full-height vert crks up to 1/16" wide.
390	2	Reinf Conc Wingwalls	(LF)	0	0	0	0	0	0	0
356	1	Steel Fatigue SmFlag	(EA)	0	0	0	0	0	0	0
358	1	Deck Cracking SmFlag	(EA)	0	0	0	0	0	0	0
359	1	Soffit Smart Flag	(EA)	0	0	0	0	0	0	0
363	1	Section Loss SmFlag	(EA)	0	0	0	0	0	0	0

## DELAWARE DEPARTMENT OF TRANSPORTATION

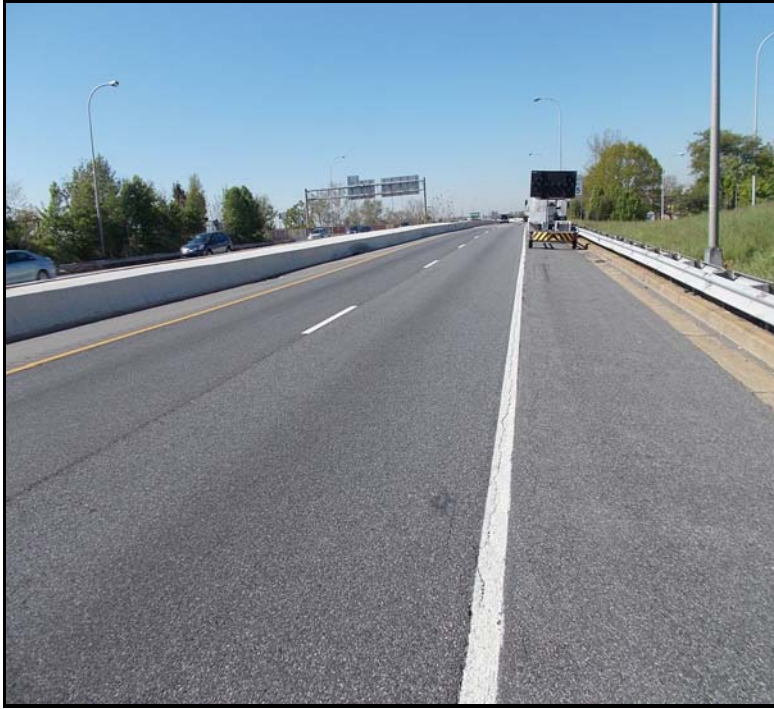
*Bridge Management Section*  
*MultiSpan PONTIS Element Report for Span No. 34*

Bridge ID: 1748S059

Inspection Date: 3/28/2013

Description: Span 60S (Pier 59S to  
No. Abut.)

ELEM	ENV	DESCRIPTION	UNITS	TOTAL	CS1	CS2	CS3	CS4	CS5	COMMENTS
22	4	P Conc Deck/Rigid Ov	(SF)	0	0	0	0	0	0	0
65	4	Drainage	(EA)	1	0	0	1	0	0	CS3: (1 EA) Scupper and downspout are clogged w/ evidence of leakage. Downspout has surface corrosion.
300	4	Strip Seal Exp Joint	(LF)	42	42	0	0	0	0	CS1: (42 LF) Packed w/ debris in shoulders, minor debris thruout.
321	4	R/Conc Approach Slab	(EA)	1	0	1	0	0	0	CS2: (1 EA) HL map cracking throughout, moderate wear, edge spalls up to 12"l x 2"w x 3/4"d and 1/16"w longit cr's. Random edge spalls with bituminous patches.
107	3	Paint Stl Opn Girder	(LF)	339	279	60	0	0	0	CS2: (60 LF) Light spot or freckled rust and chalking on bottom flanges.
331	4	Conc Bridge Railing	(LF)	153	149	0	4	0	0	CS3: (4 LF) HL crack w/ rust stains In E & W barriers.
334	4	Metal Rail Coated	(LF)	0	0	0	0	0	0	0
381	3	Painted Steel Diaphr	(EA)	20	3	17	0	0	0	CS2: (17 EA) Several diaph's w/ light spot rust. Bay 4 diaph. @ P59 is slightly distorted out of the vertical plane.
311	4	Moveable Bearing	(EA)	6	6	0	0	0	0	CS1: (6 EA) Sliding plate brgs @ Pier 59 are neutral to expanded @ 29 degrees, Brgs 5 & 6 close to fully expanded, heavily greased.
313	4	Fixed Bearing	(EA)	6	6	0	0	0	0	CS1: (6 EA) N. Abut. brgs are heavily greased w/ light spot rust to exp areas of pl's.
205	3	R/Conc Column	(LF)	0	0	0	0	0	0	0
215	3	R/Conc Abutment	(LF)	42	40	0	2	0	0	CS1: (40 LF) Previously noted horiz crack is cold joint. CS3: (2 LF) 24"h x 16"w delam area w/ 2 spalls up to 6"h x 4"w x 3/4"d w/ exp steel in E. end of backwall (@ BM 6).
234	3	R/Conc Pier Cap	(LF)	0	0	0	0	0	0	0
390	2	Reinf Conc Wingwalls	(LF)	24	24	0	0	0	0	NDN
356	1	Steel Fatigue SmFlag	(EA)	0	0	0	0	0	0	0
358	1	Deck Cracking SmFlag	(EA)	0	0	0	0	0	0	0
359	1	Soffit Smart Flag	(EA)	0	0	0	0	0	0	0
363	1	Section Loss SmFlag	(EA)	0	0	0	0	0	0	0



1. North Approach, looking south onto the bridge from SB lanes.



2. East Elevation, looking south from Span 56.



3. General view of underside (Span 52), looking north.



4. Under record, Liberty St (Span 30), looking east.

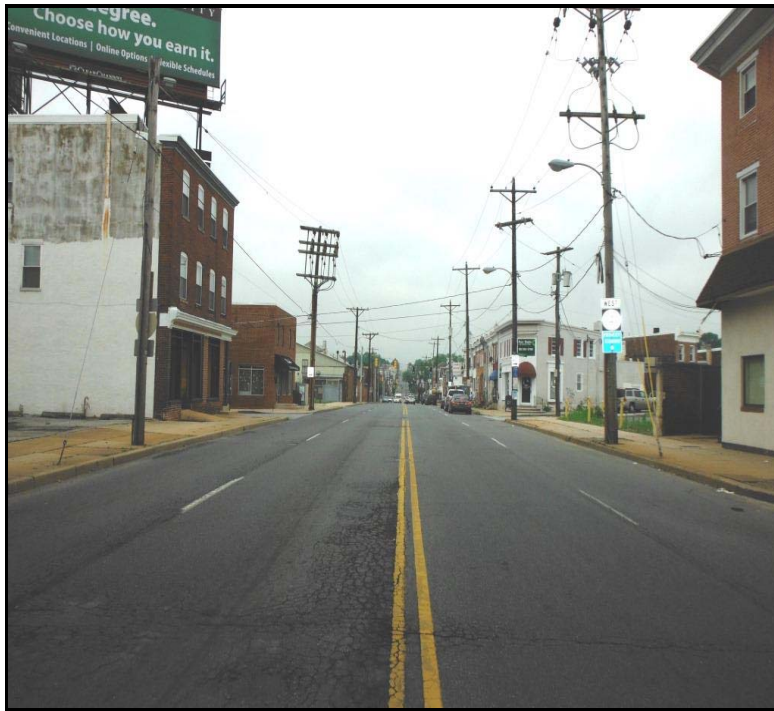


5. Under record, Liberty St (Span 30), looking west.



6. Under record, Maryland Ave (Span 33), looking east.





7. Under record, Maryland Ave (Span 33), looking west.



8. Under record, Lancaster Ave (Span 46), looking east.



9. Under record, Lancaster Ave (Span 46), looking west.



10. Under record, 2nd St (Span 50), looking east.



11. Under record, 2nd St (Span 50), looking west.



12. Under record, 3rd St (Span 56), looking east.





13. Under record, 3rd St (Span 56), looking west.



14. Under record, 4th St (Span 59), looking east.

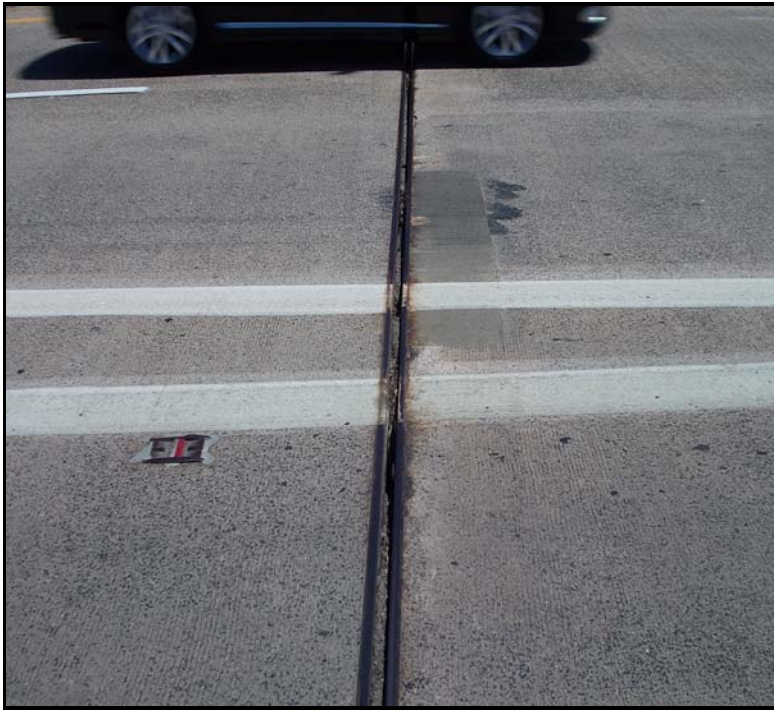


15. Under record, 4th St (Span 59), looking west.



16. General view of deck, looking south (from Span 59).





17. Span 30, right lane, concrete patch at joint.



18. Span 55, right lane is missing extrusion.



19. Span 28, W. Parapet barrier with holes.



20. Span 52, Panel 5 of metal rail has a hole.



21. Span 27, Pedestal 4 west face with spall with exposed steel.



22. Span 41, Pedestal 1 east face with spall with exposed steel.



23. Span 44, Brg 6 at Pier 43, overcontracted at 65 deg.



24. Span 52, Brg 6 at Pier 51. NE corner w/ pack rust (appears frozen).





25. Span 54, Pedestal 6 spall with exposed steel.



26. North Abutment elevation, looking north.



27. Pier 57, South Elevation, looking northwest (typical pier configuration).



**UNDER RECORD**  
**For**  
**Bridge: 1748S059**

**IDENTIFICATION**

Bridge ID: 1748S059	(2) District: 01	(3) County: 3
Inventory Route:		
(A) On/Under: A	(B) Highway Type: 3	(C) Service Lvl: 1
(D) Route No: 00009		11) Mile Pt: 0.77 mi
6A) Features Intersected: SR 4 & SR 48		6B) Critical: *
16) Latitude: 39^44'26.27"	17) Longitude: 75^33'44.99"	

**AGE AND SERVICE**

19) Detour Length: 5 mi	27) Year Built: 1964	
28) No. of Lanes:	A) On Bridge: 5	B) Under Bridge: 18
29) ADT: 11501	30) Year of ADT: 2012	109) % Truck ADT: 6

**CLASSIFICATION**

20) Toll Facility: 3		
26) Functional Class: 16	37) Historical: 5	100) Defense Highway: 0
102) Direction: 2	103) Temp. Str.:	104) NHS: 0
110) Nat. Truck Network: 0		

**GEOMETRIC DATA**

10) Clearances -		
Vertical:: 14.8 ft		
42) Type of Service:	A) On Bridge: 6	B) Under Bridge: 1
43A) MAIN SPAN MATERIAL: 3		43B) DESIGN TYPE: 02
47) Inv. Route - Horiz.		
Clearance: 57.5 ft		
48) Length Maximum Span: 137.5 ft	49) Structure Length: 2,531.0 ft	

**UNDER RECORD SKETCH**

UNDER RECORD**For  
Bridge: 1748S059**IDENTIFICATION

Bridge ID: 1748S059	(2) District: 01	(3) County: 3
Inventory Route:		
(A) On/Under: B	(B) Highway Type: 3	(C) Service Lvl: 1
(D) Route No: 00048		11) Mile Pt: 6.41 mi
6A) Features Intersected: SR 4 & SR 48		6B) Critical: *
16) Latitude: 39^44'26.27"	17) Longitude: 75^33'44.99"	

AGE AND SERVICE

19) Detour Length: 5 mi	27) Year Built: 1964	
28) No. of Lanes:	A) On Bridge: 3	B) Under Bridge: 18
29) ADT: 7541	30) Year of ADT: 2012	109) % Truck ADT: 6

CLASSIFICATION

20) Toll Facility: 3		
26) Functional Class: 14	37) Historical: 5	100) Defense Highway: 0
102) Direction: 1	103) Temp. Str.:	104) NHS: 1
110) Nat. Truck Network: 0		

GEOMETRIC DATA

10) Clearances -		
Vertical:: 32.2 ft		
42) Type of Service:	A) On Bridge: 6	B) Under Bridge: 1
43A) MAIN SPAN MATERIAL: 3		43B) DESIGN TYPE: 02
47) Inv. Route - Horiz.		
Clearance: 34.5 ft		
48) Length Maximum Span: 137.5 ft	49) Structure Length: 2,531.0 ft	

UNDER RECORD SKETCH

UNDER RECORD**For  
Bridge: 1748S059**IDENTIFICATION

Bridge ID: 1748S059	(2) District: 01	(3) County: 3
Inventory Route:		
(A) On/Under: C	(B) Highway Type: 3	(C) Service Lvl: 1
(D) Route No: 00048		11) Mile Pt: 7.81 mi
6A) Features Intersected: SR 4 & SR 48		6B) Critical: *
16) Latitude: 39^44'26.27"	17) Longitude: 75^33'44.99"	

AGE AND SERVICE

19) Detour Length: 5 mi	27) Year Built: 1964	
28) No. of Lanes:	A) On Bridge: 3	B) Under Bridge: 18
29) ADT: 7541	30) Year of ADT: 2012	109) % Truck ADT: 6

CLASSIFICATION

20) Toll Facility: 3		
26) Functional Class: 14	37) Historical: 5	100) Defense Highway: 0
102) Direction: 1	103) Temp. Str.:	104) NHS: 1
110) Nat. Truck Network: 0		

GEOMETRIC DATA

10) Clearances -		
Vertical:: 30.0 ft		
42) Type of Service:	A) On Bridge: 6	B) Under Bridge: 1
43A) MAIN SPAN MATERIAL: 3		43B) DESIGN TYPE: 02
47) Inv. Route - Horiz.		
Clearance: 34.5 ft		
48) Length Maximum Span: 137.5 ft	49) Structure Length: 2,531.0 ft	

UNDER RECORD SKETCH

UNDER RECORD**For  
Bridge: 1748S059**IDENTIFICATION

Bridge ID: 1748S059	(2) District: 01	(3) County: 3
Inventory Route:		
(A) On/Under: D	(B) Highway Type: 5	(C) Service Lvl: 1
(D) Route No: 00000		11) Mile Pt: 0.50 mi
6A) Features Intersected: SR 4 & SR 48		6B) Critical:
16) Latitude: 39^44'26.27"	17) Longitude: 75^33'44.99"	

AGE AND SERVICE

19) Detour Length: 0 mi	27) Year Built: 1964	
28) No. of Lanes:	A) On Bridge: 1	B) Under Bridge: 18
29) ADT: 187	30) Year of ADT: 2012	109) % Truck ADT: 3

CLASSIFICATION

20) Toll Facility: 3		
26) Functional Class: 19	37) Historical: 5	100) Defense Highway: 0
102) Direction: 1	103) Temp. Str.:	104) NHS: 0
110) Nat. Truck Network: 0		

GEOMETRIC DATA

10) Clearances -		
Vertical:: 19.2 ft		
42) Type of Service:	A) On Bridge: 6	B) Under Bridge: 1
43A) MAIN SPAN MATERIAL: 3		43B) DESIGN TYPE: 02
47) Inv. Route - Horiz.		
Clearance: 15.0 ft		
48) Length Maximum Span: 137.5 ft	49) Structure Length: 2,531.0 ft	

UNDER RECORD SKETCH

UNDER RECORD**For  
Bridge: 1748S059**IDENTIFICATION

Bridge ID: 1748S059	(2) District: 01	(3) County: 3
Inventory Route:		
(A) On/Under: E	(B) Highway Type: 5	(C) Service Lvl: 1
(D) Route No: 00000		11) Mile Pt: 0.45 mi
6A) Features Intersected: SR 4 & SR 48		6B) Critical:
16) Latitude: 39^44'26.27"	17) Longitude: 75^33'44.99"	

AGE AND SERVICE

19) Detour Length: 1 mi	27) Year Built: 1964	
28) No. of Lanes:	A) On Bridge: 2	B) Under Bridge: 18
29) ADT: 99	30) Year of ADT: 2012	109) % Truck ADT: 3

CLASSIFICATION

20) Toll Facility: 3		
26) Functional Class: 19	37) Historical: 5	100) Defense Highway: 0
102) Direction: 2	103) Temp. Str.:	104) NHS: 0
110) Nat. Truck Network: 0		

GEOMETRIC DATA

10) Clearances -		
Vertical:: 31.6 ft		
42) Type of Service:	A) On Bridge: 6	B) Under Bridge: 1
43A) MAIN SPAN MATERIAL: 3		43B) DESIGN TYPE: 02
47) Inv. Route - Horiz.		
Clearance: 20.0 ft		
48) Length Maximum Span: 137.5 ft	49) Structure Length: 2,531.0 ft	

UNDER RECORD SKETCH

UNDER RECORD**For  
Bridge: 1748S059**IDENTIFICATION

Bridge ID: 1748S059	(2) District: 01	(3) County: 3
Inventory Route:		
(A) On/Under: F	(B) Highway Type: 3	(C) Service Lvl: 1
(D) Route No: 00004		11) Mile Pt: 14.10 mi
6A) Features Intersected: SR 4 & SR 48		6B) Critical:
16) Latitude: 39^44'26.27"	17) Longitude: 75^33'44.99"	

AGE AND SERVICE

19) Detour Length: 1 mi	27) Year Built: 1964	
28) No. of Lanes:	A) On Bridge: 4	B) Under Bridge: 18
29) ADT: 13770	30) Year of ADT: 2012	109) % Truck ADT: 6

CLASSIFICATION

20) Toll Facility: 3		
26) Functional Class: 14	37) Historical: 5	100) Defense Highway: 0
102) Direction: 2	103) Temp. Str.:	104) NHS: 1
110) Nat. Truck Network: 0		

GEOMETRIC DATA

10) Clearances -		
Vertical:: 29.9 ft		
42) Type of Service:	A) On Bridge: 6	B) Under Bridge: 1
43A) MAIN SPAN MATERIAL: 3		43B) DESIGN TYPE: 02
47) Inv. Route - Horiz.		
Clearance: 42.2 ft		
48) Length Maximum Span: 137.5 ft	49) Structure Length: 2,531.0 ft	

UNDER RECORD SKETCH

# Under Record Sketch Sheet

SPAN 30

I-95 over LIBERTY STREET

Bridge: 1 - 748N - 059

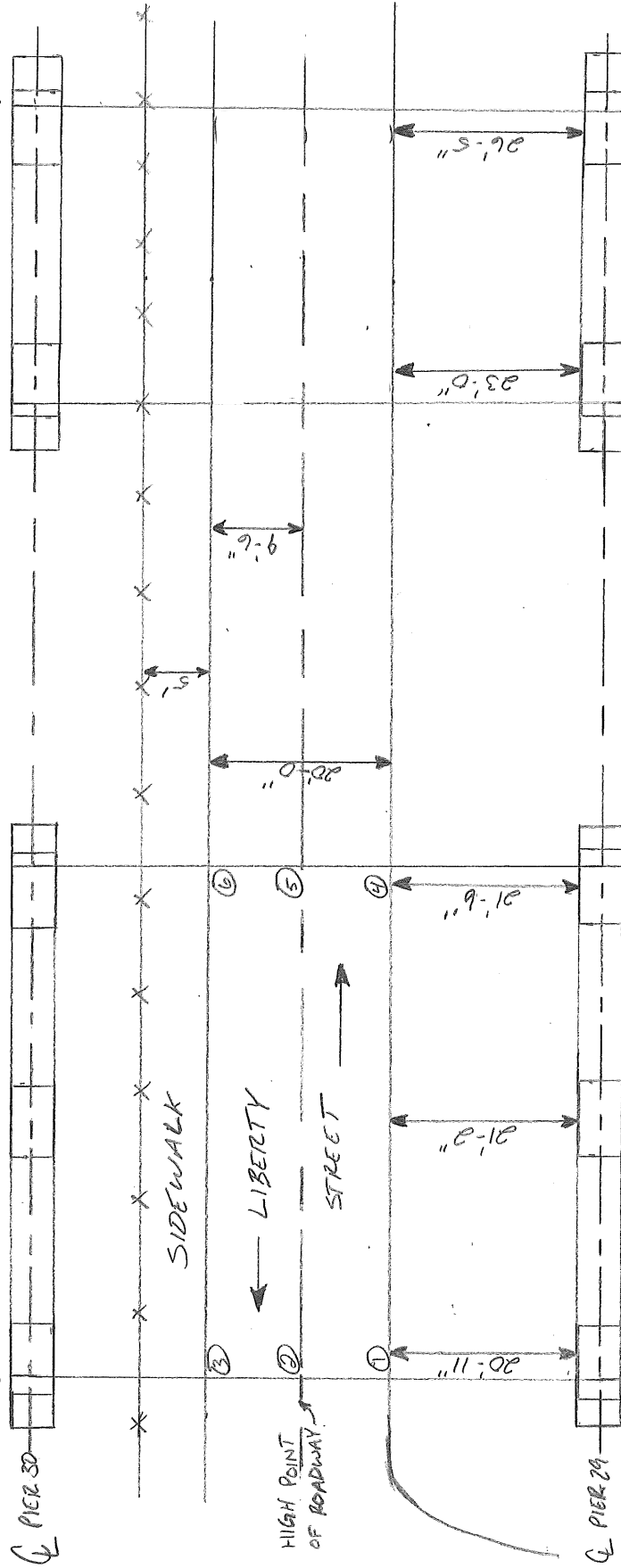
Inspected By: JRO, SON,

Date: 4, 19, 2013



I-95SB

I-95NB



VERTICAL CLEARANCES:

SOUTHBOUND

- ① 31'-9"
- ② 31'-7"
- ③ 31'-10"
- ④ 33'-8"
- ⑤ 33'-6"
- ⑥ 33'-8"

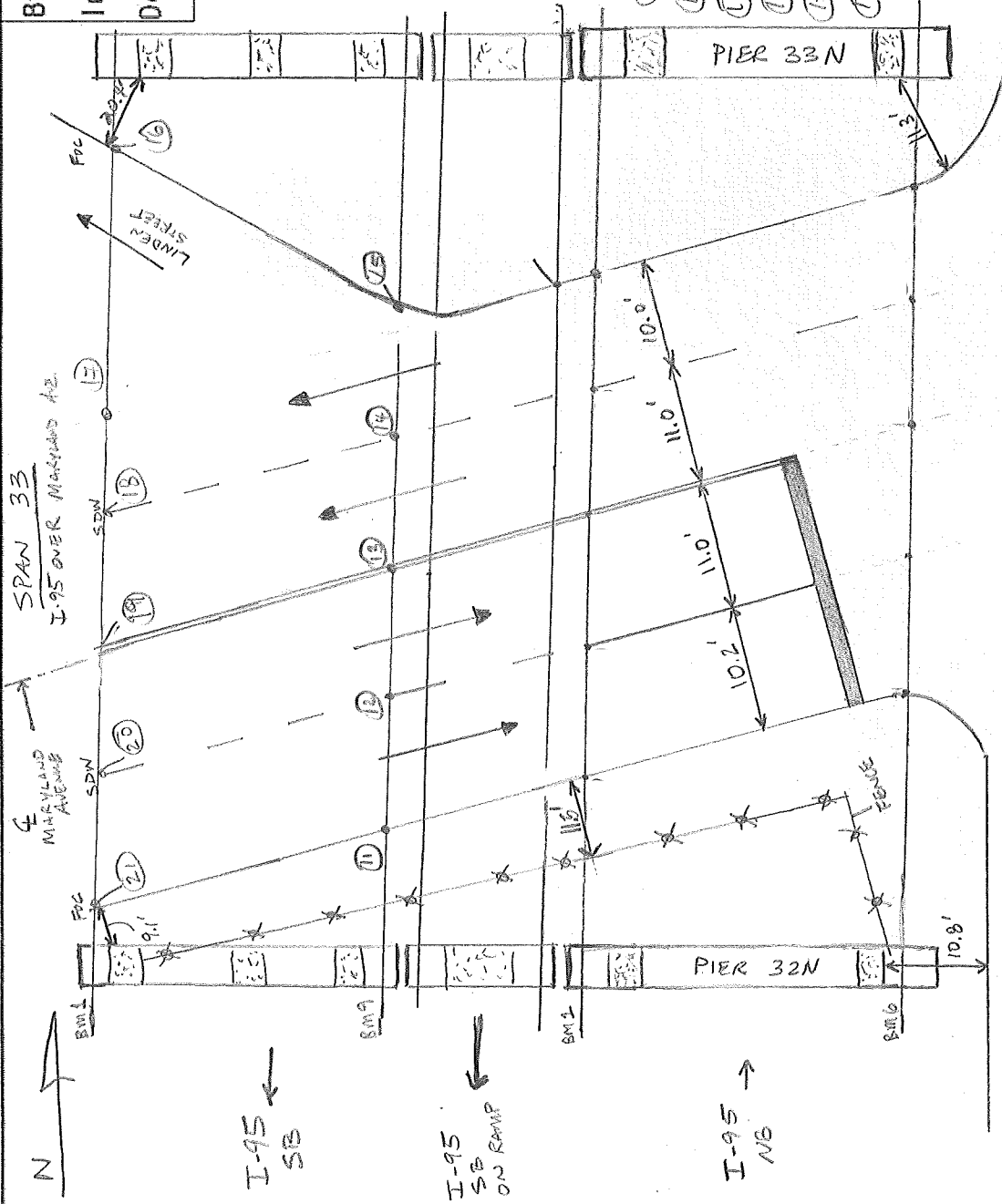
MIN LAT RT = 20'-11"

LT = 0

# Under Record Sketch Sheet

Bridge: 1 - 748N - 059  
 Inspected By: SON, BSM,  
 Date: 4, 16, 2013

VERTICAL CLEARANCES



SOUTHBOUND:

- |    |        |    |         |
|----|--------|----|---------|
| 11 | 24'-9" | 12 | 23'-4"  |
| 12 | 24'-7" | 13 | 22'-11" |
| 13 | 24'-7" | 14 | 22'-11" |
| 14 | 25'-0" | 15 | 22'-11" |
| 15 | 25'-0" | 16 | 23'-0"  |
| 16 | 23'-2" |    |         |

Item 55: 9.1' (1 748S 059)



# Under Record Sketch Sheet

Span 46

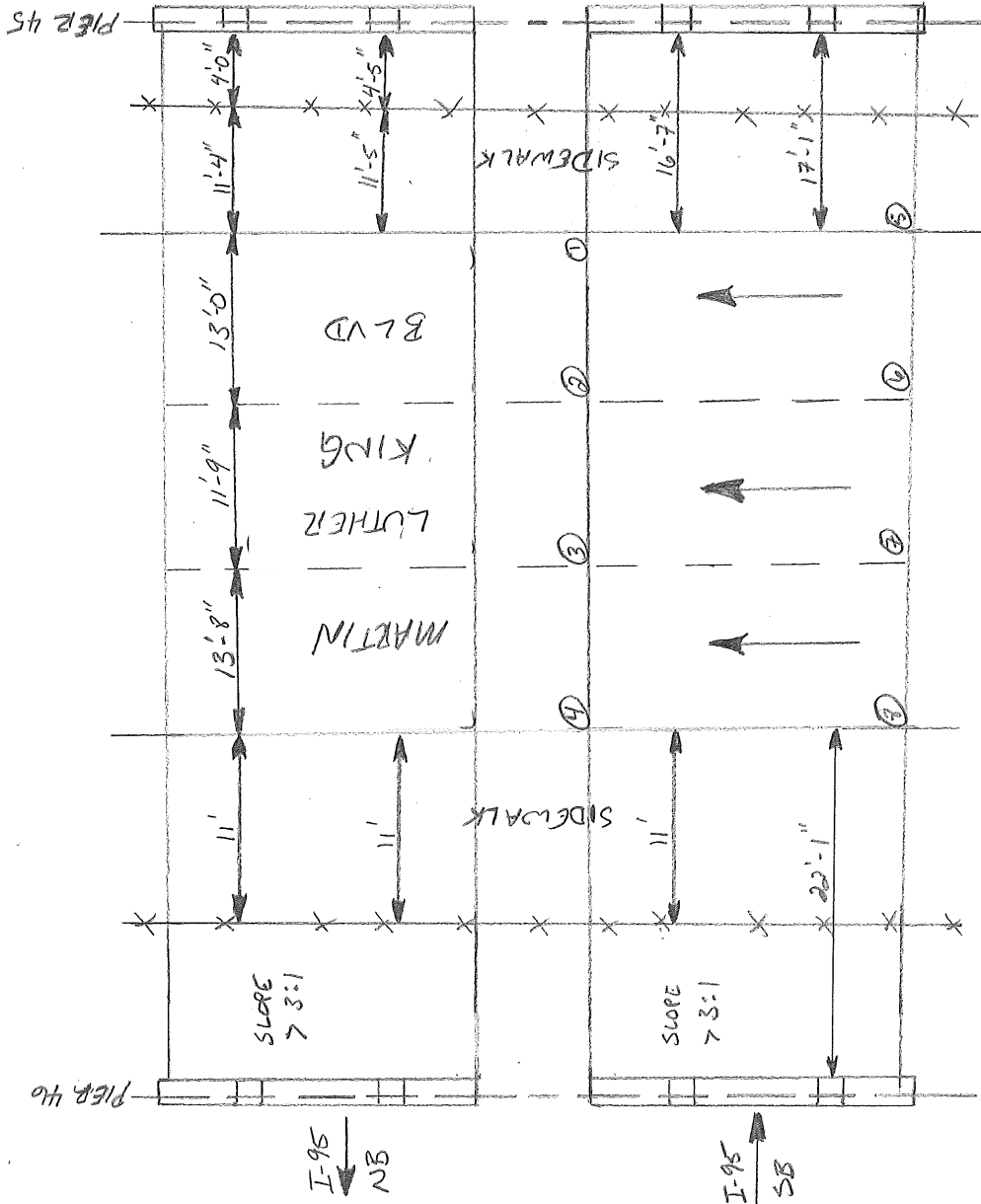
I-95 over MLK BLVD



Bridge: 1-748N-059

Inspected By: JRG, SAN,

Date: 4, 17, 2013



## VERTICAL CLEARANCES:

### SOUTHBOUND

- |              |              |
|--------------|--------------|
| ① 33'-4 7/8" | ⑤ 32'-3 3/4" |
| ② 33'-4 1/4" | ⑥ 32'-2 3/4" |
| ③ 33'-8"     | ⑦ 32'-5"     |
| ④ 33'-10"    | ⑧ 32'-4"     |

Item 56: 11.0' (1 748S 059)

# Under Record Sketch Sheet

SPAN 50

I-95 OVER W. 2ND STREET

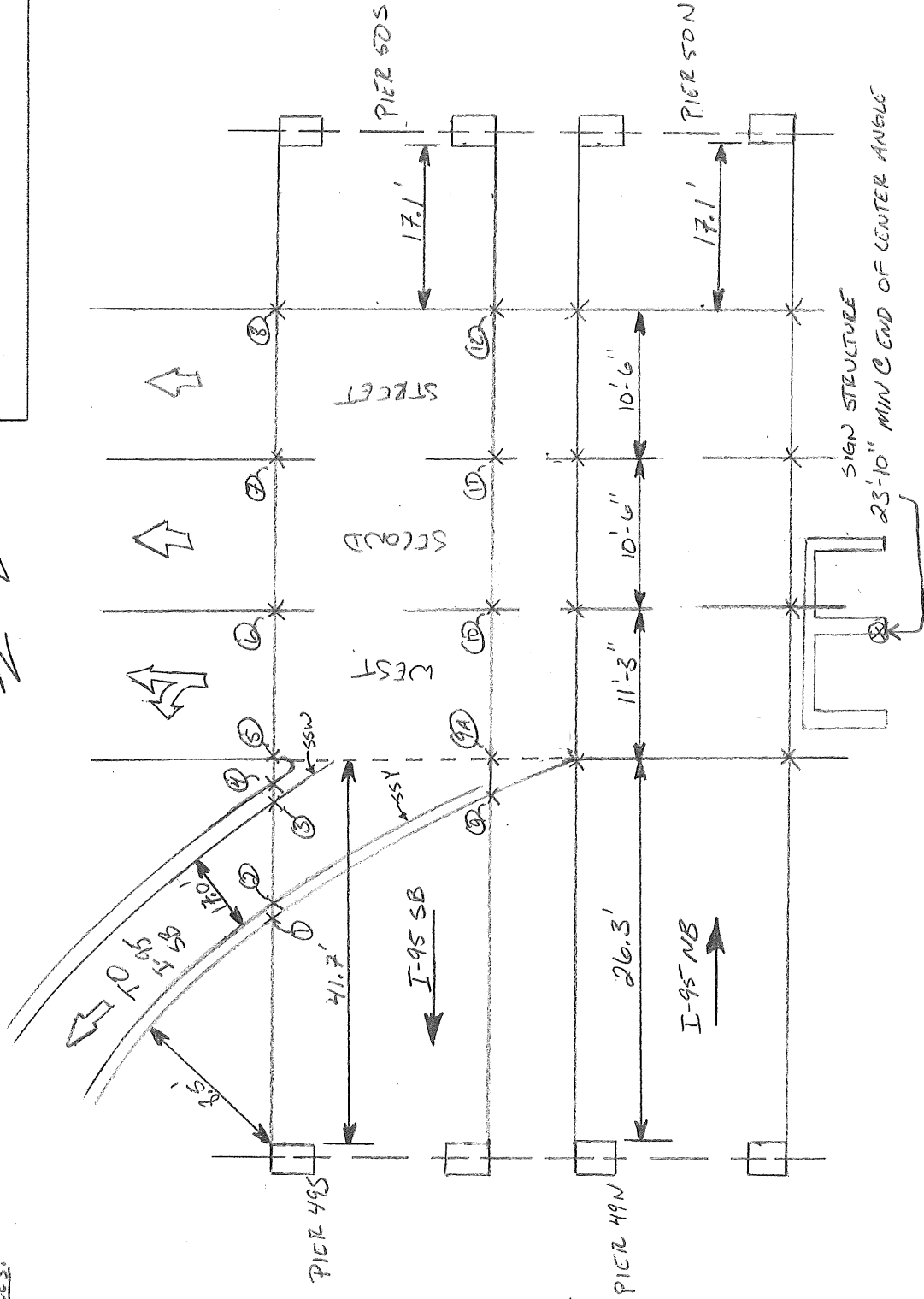
Bridge: 1 - 748N - 059

Inspected By: SON, JZQ,

Date: 4, 18, 2013

## VERTICAL CLEARANCES:

- ① 30'-8"
- ② 30'-9"
- ③ 30'-3"
- ④ 30'-3"
- ⑤ 30'-2"
- ⑥ 30'-0"
- ⑦ 29'-11 3/4"
- ⑧ 30'-2 5/8"
- ⑨ 32'-8 1/2"
- ⑩ 32'-8"
- ⑪ 32'-7"
- ⑫ 32'-6 3/8"
- ⑬ 32'-11"



# Under Record Sketch Sheet

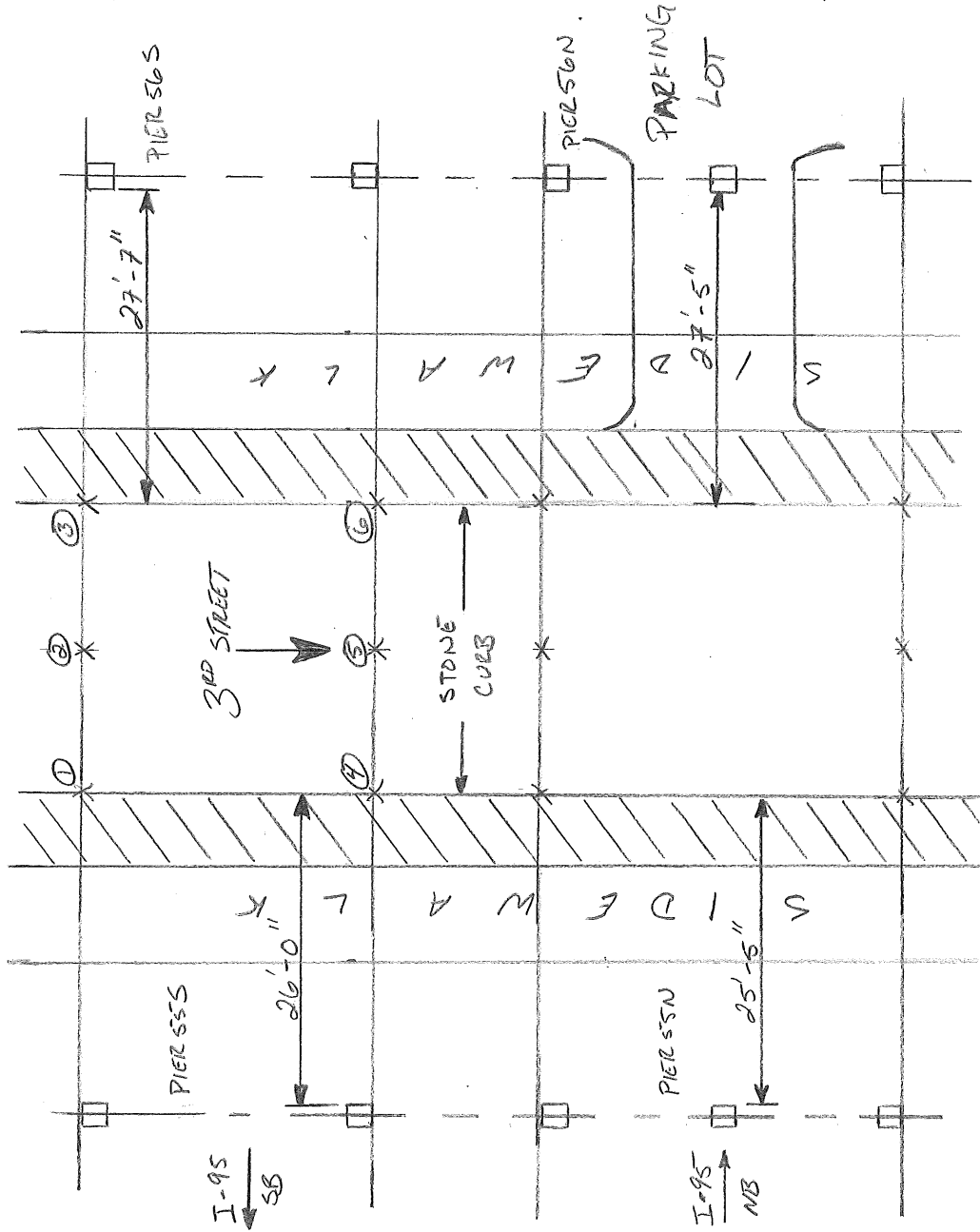
SPAN 56

I-95 over 3RD STREET

Bridge: 1 - 748N - 059

Inspected By: CWM, SDN,

Date: 4, 1, 2013



## VERTICAL CLEARANCES:

### SOUTHBOUND

- ① 19'-3 5/8"
- ② 19'-5 1/8"
- ③ 20'-3"
- ④ 22'-1 1/4"
- ⑤ 22'-0 1/4"
- ⑥ 22'-11 1/2"

# Under Record Sketch Sheet

Bridge: / -748N - 059

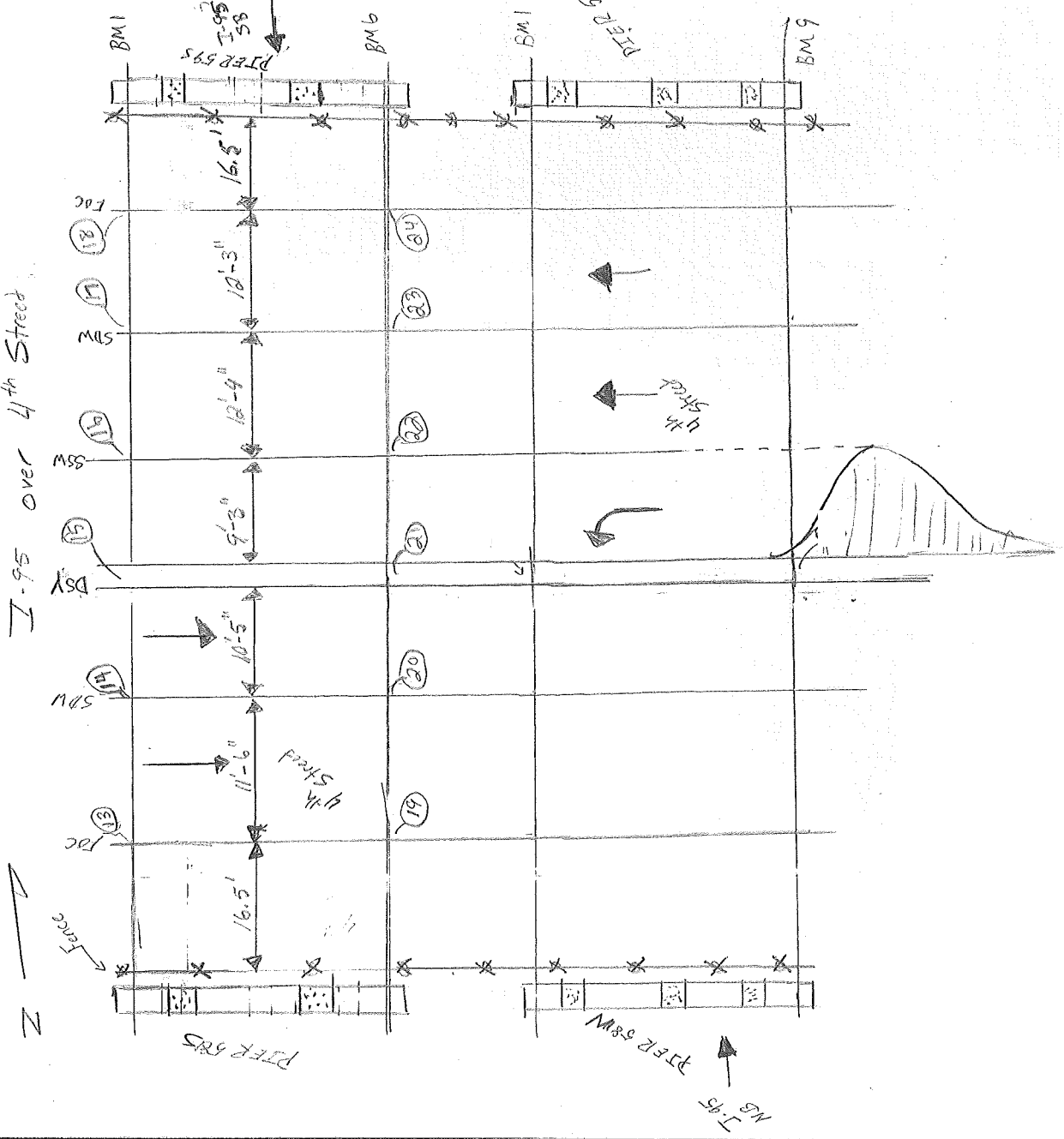
Inspected By: SON, BSM

Date: 4, 16, 2013

Vertical Clearances:

I-95 over 4th Street

Span 59



Item 54: 14.8' (1 748S 059)