

# Welcome to the DEPARTMENT OF CORRECTION



September 5, 2013

James C. Welch, RN, HNB-BC, Chief  
Bureau of Correctional Healthcare Services

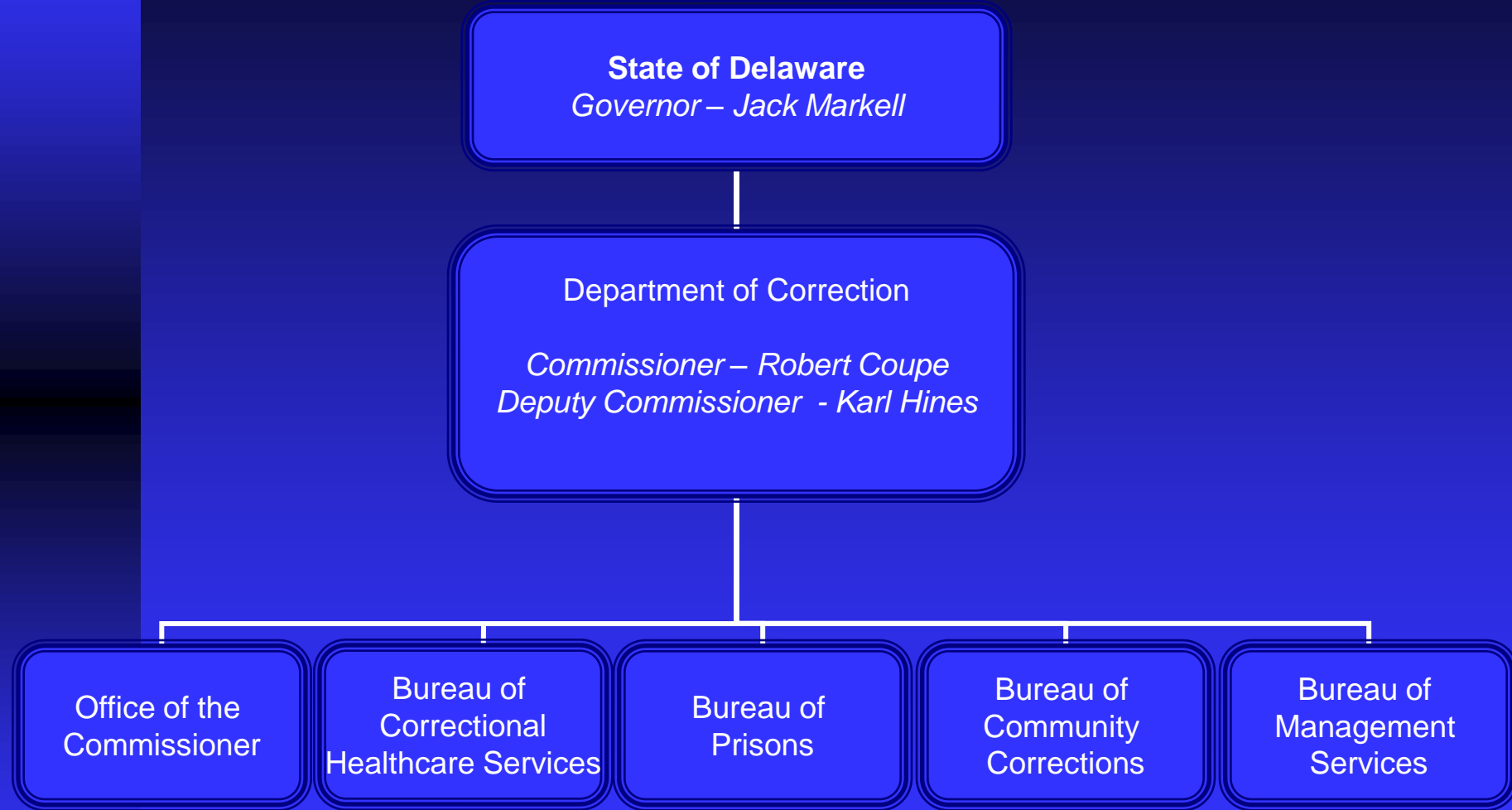
# Welcome

- Introductions
- This presentation will be emailed to you in as a pdf copy by close of business tomorrow.
  - ◆ Ensure you signed in for this is a mandatory meeting.
  - ◆ Ensure your email address is legible.

# DOC Mission Statement

“To protect the public by supervising adult offenders through safe and humane services, programs and facilities.”

# Organizational Chart



# BCHS



# Department of Correction OVERVIEW

- Unified System – No County Jails
- Separate Agencies for Adult & Juvenile Offenders. DOC does not house Juveniles, for the most part.

# Department of Correction OVERVIEW

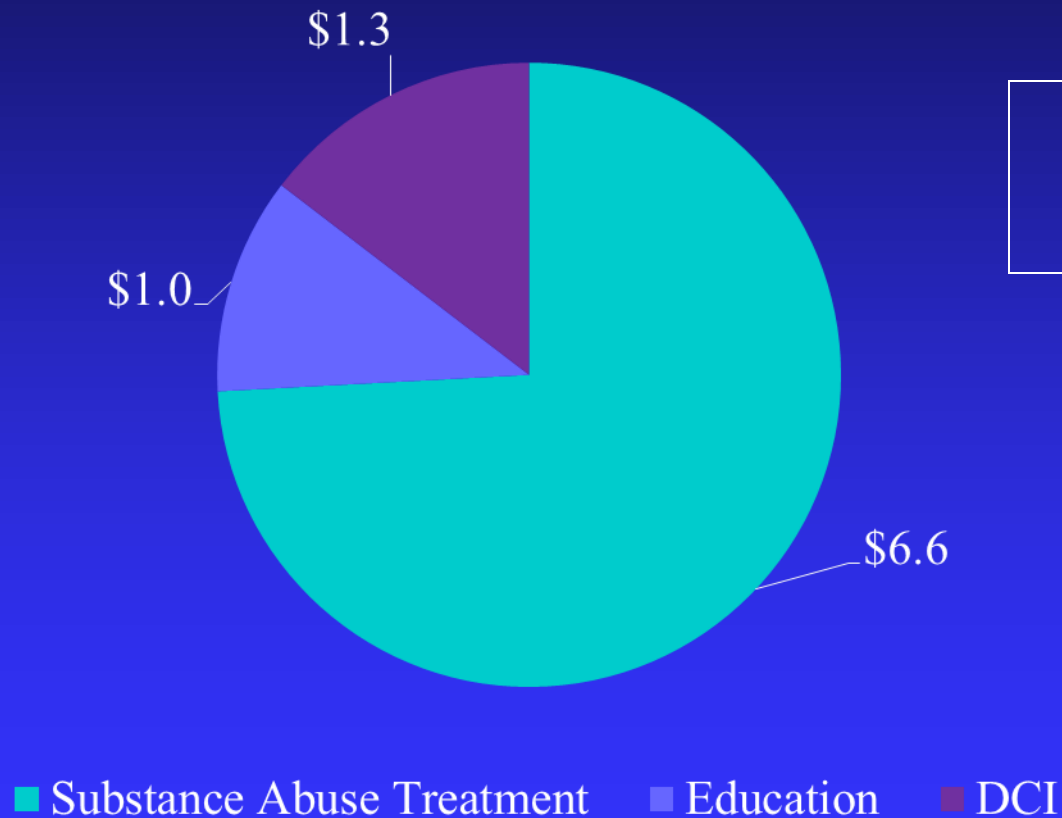
- 4 - Level 5 Facilities
- 6 – Level 4 Facilities
- Several Leased Facilities for Levels 1 -3  
Administrative Staff
- Website <http://doc.delaware.gov/>

# DOC Employees

- Approximately 2500 employees
  - ◆ 1700 Correctional Series Personnel
  - ◆ 300 Probation and Parole Officers
  - ◆ 500 Administrative and Support
- \$269.7 million budget for FY 2014

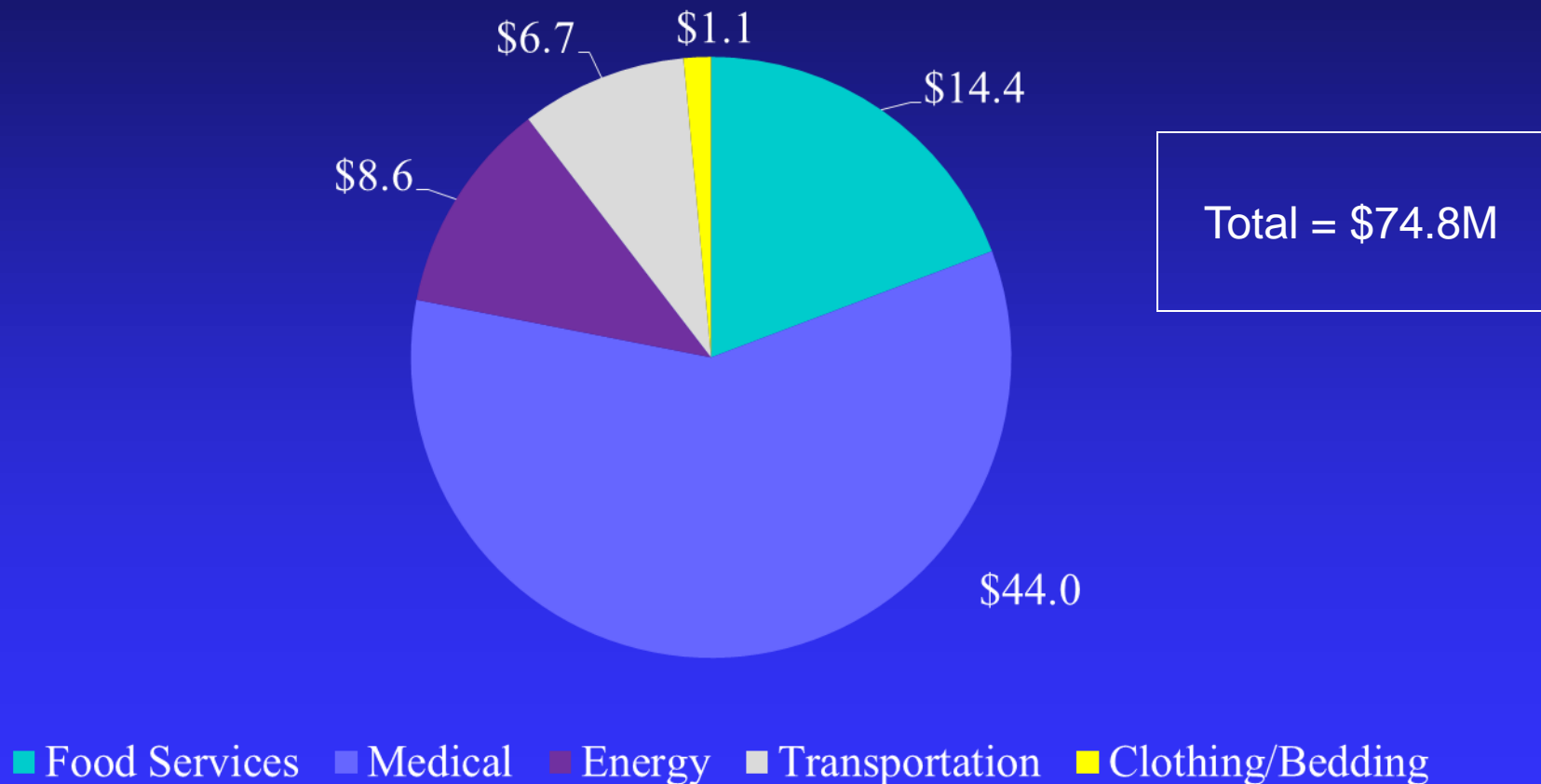


# Provide programmatic opportunities for offenders



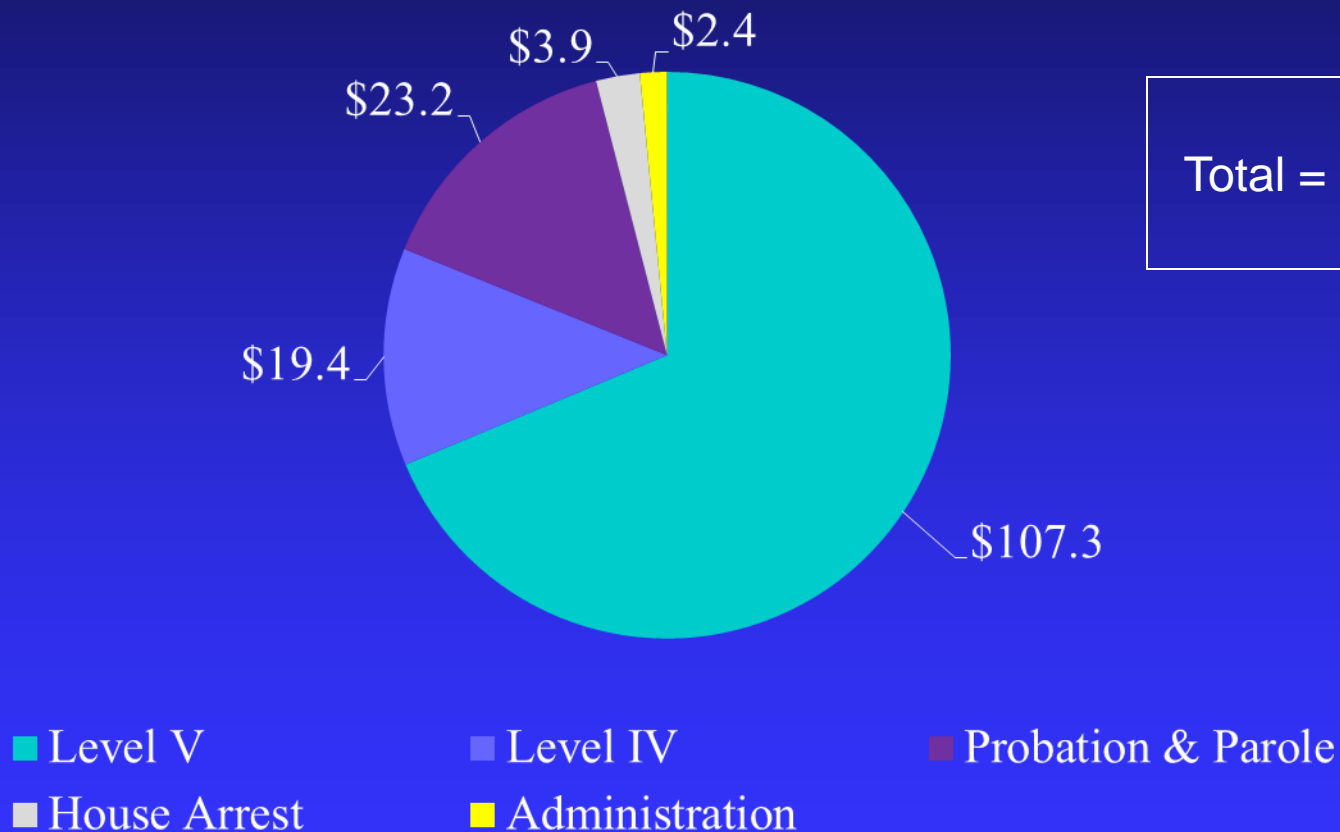
**FY13 Budget in Millions**

# Provide offender health and welfare services



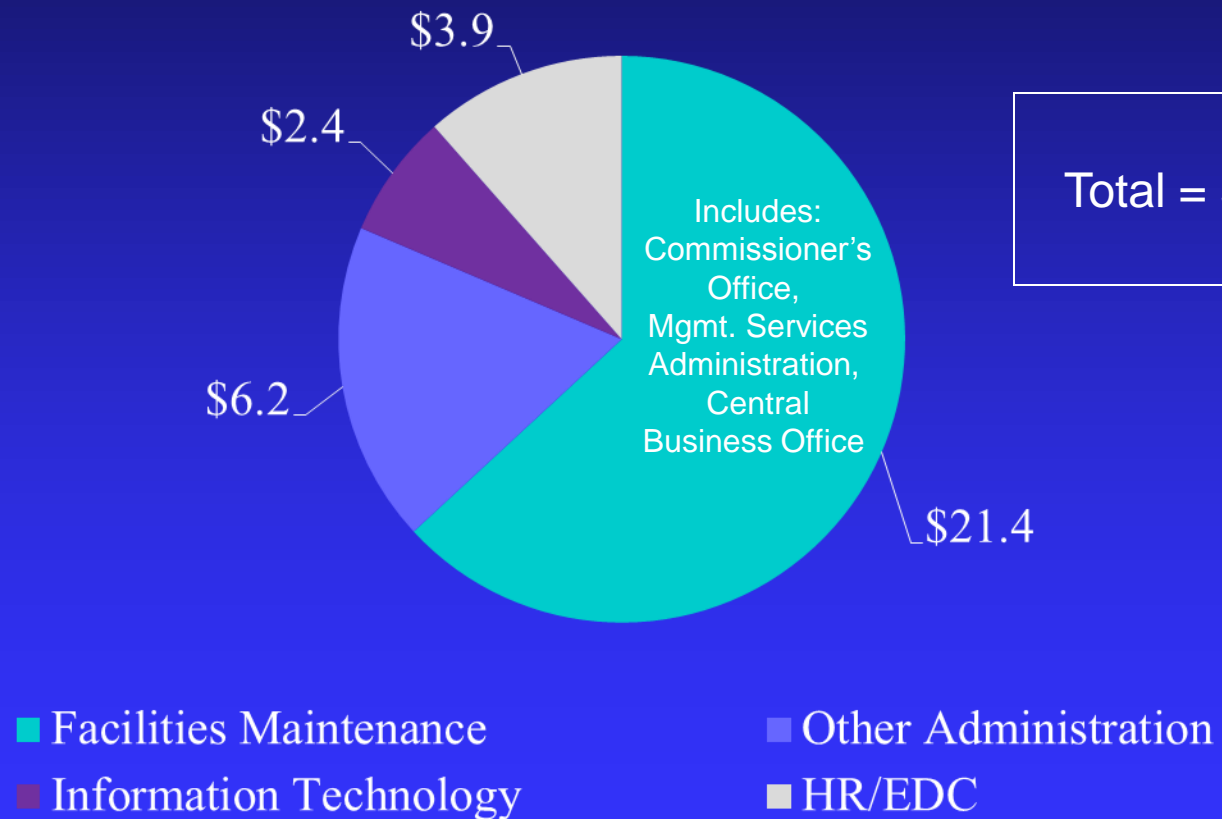
**FY13 Budget in Millions**

# Supervise offenders in Department facilities and in the community



FY13 Budget in Millions

# Provide management and operational services department-wide



**FY13**  
**Budget in Millions**

# Population Demographics\*

## ■ Bureau of Prisons (L5) - total of 5985 offenders

### ◆ 449 female / 5536 male

◆ < 20	326
◆ 21 – 30	2102
◆ 31 – 40	1591
◆ 41 – 50	1095
◆ 51 – 60	660
◆ 61+	211

\*totals fluctuate daily

# Population Demographics

## ■ Racial Makeup of Bureau of Prisons

- ◆ 56 % Black
- ◆ 40% White
- ◆ 4 % Hispanic
- ◆ <1 % Other

# Population Demographics

## ■ Bureau of Prisons

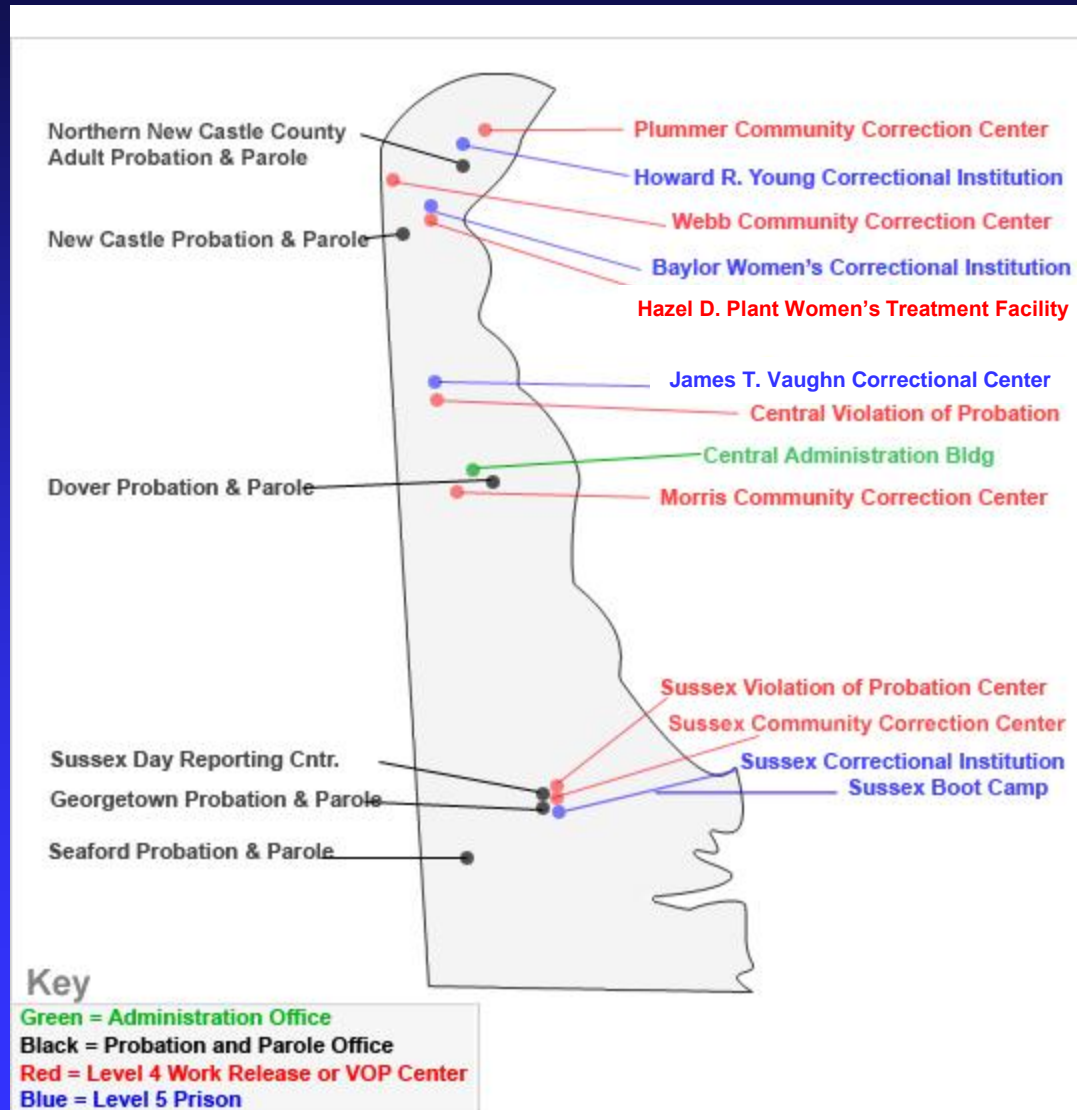
- ◆ 1637 - detained
- ◆ 478 - serving less than 1 year
- ◆ 3265 - serving 1 year or more
- ◆ 56 - serving Indefinite Sentences
- ◆ 510 - serving life sentences
- ◆ 18 - sentenced to death (all male)
- ◆ 42 – “Other sentences”

## ■ “Flow” of offenders through system

- ◆ 21,000+ admitted and released each year

## ■ Approximately 1 out of every 34 Delawareans is a client of the DOC

# Department of Correction Facilities





# Department of Correction

## New Castle County Facilities

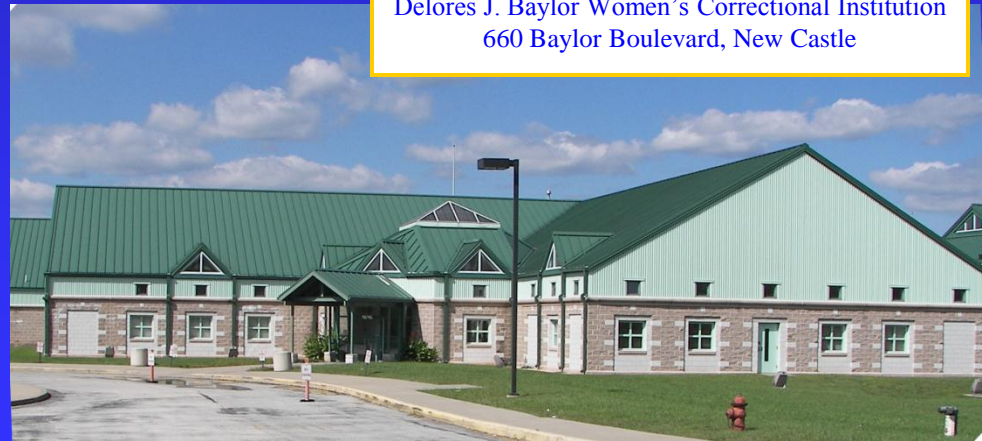
Hazel D. Plant Women's Treatment Facility  
660 Baylor Boulevard, New Castle



The Hazel D. Plant Women's Treatment Facility is the State's first Level 4 center dedicated to the substance treatment. Eighty-eight (88) beds are available for women to participate in the CREST residential treatment program. The facility opened in 2005 and has a bed capacity of ninety-six (96).

The Baylor Women's Correctional Institution opened in 1991 and has an operating capacity of three hundred-twenty (320). This institution houses pre-trial and sentenced women at minimum, medium and maximum security levels. Eighty-six (86) beds are dedicated to the "Village", a 12-month residential drug treatment program.

Delores J. Baylor Women's Correctional Institution  
660 Baylor Boulevard, New Castle

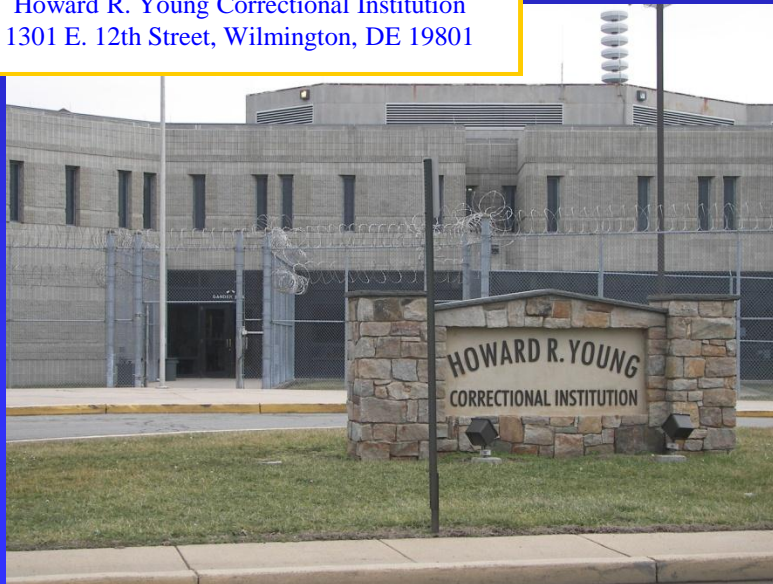


# Department of Correction

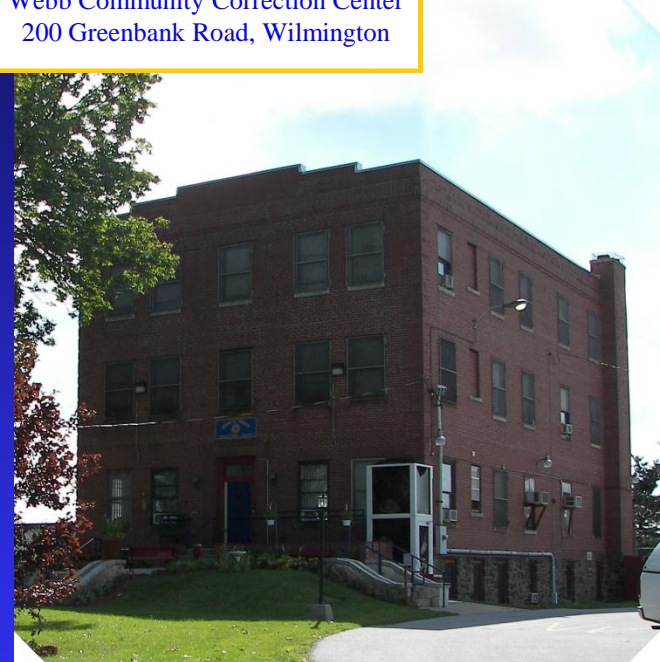
## New Castle County Facilities (continued)

Webb first opened as a correctional facility in 1932. In 2007, the facility was converted to a Level 4 community correctional center with an operating capacity of one hundred-nine (109) beds.

Howard R. Young Correctional Institution  
1301 E. 12th Street, Wilmington, DE 19801



Webb Community Correction Center  
200 Greenbank Road, Wilmington



The Howard R. Young Correctional Institution opened in 1982. This facility houses the detainee and pre-trial population and has an operating capacity of one thousand one-hundred eighty (1,180). The Key program, a two hundred (200) bed residential treatment program at this facility has received international attention.

# Department of Correction

## New Castle County Facilities (continued)

Northern New Castle County Adult  
Probation & Parole Office  
314 Cherry Lane, New Castle



This facility opened in January 2008. From this location staff supervise SENTAC Levels 2, 3 and 4 offenders in the community. Specialized caseload supervision at this facility includes Sex Offenders, Domestic Violence, Boot Camp and CREST Aftercare. This office is also the base for Safe Streets and the Governor's Task Force units throughout New Castle County.

The New Castle Probation & Parole office opened in 1996. It supervises Levels 2 and 3 offenders in the mid to southern part of New Castle County.

New Castle Probation & Parole  
26 Parkway Circle, New Castle





# Department of Correction

## New Castle County Facilities (continued)

Plummer Community Correction Center  
38 Todds Lane, Wilmington



The Plummer Community Correction Center opened in 1992. The facility manages and supervises male and female offenders who are participating in work release, substance abuse treatment and intensive community supervision.

Central Violation of Probation Center  
825 Smyrna Landing Road, Smyrna



The Central Violation of Probation Center is a two hundred-fifty (250) bed Level 4 facility housing the CREST residential drug treatment program. It opened in 2000.

# Department of Correction

## New Castle County Facilities (continued)

James T. Vaughn Correctional Center  
1181 Paddock Road, Smyrna



The James T. Vaughn Correctional Center opened in 1971 and is the state's largest adult male correctional center. It houses minimum, medium and maximum security inmates. It also houses inmates sentenced under death penalty. JTVCC has an operating capacity of two thousand six hundred one (2,601).

# Department of Correction

## Kent County Facilities

The Office of the Commissioner as well as executive level officers and staff are located at this facility. The Human Resources, Employee Development Center, IT office, BCHS, and Centralized Offender Records are also located at this facility.

Morris Community Correction Center  
300 Water Street, Dover



Central Administration Building  
245 McKee Road, Dover



The Morris Community Correction Center opened in 1999 as a one hundred fifty (150) bed Level 4 facility housing both male and female offenders. The offenders are participants in the CREST substance abuse treatment program or work release program.

# Department of Correction

## Kent County Facilities (continued)

Dover Probation & Parole  
511 Maple Parkway, Dover



The Dover Probation and Parole office relocated from its previous office to its current address in 1994. Probation and Parole officers supervise Levels 1-4 offenders in the community. Specialized caseloads include Sex Offenders, Domestic Violence, Boot Camp and CREST Aftercare. The Kent County Governors Task Force and Dover Safe Streets operations are supervised at this location along with administrative caseloads such as Intake, Institutional Release, Level 1 and Pre-Trial.



# Department of Correction

## Sussex County Facilities

Sussex Correctional Institution  
Rt 13, Georgetown



Originally opened in 1931, the Sussex Correctional Institution currently has an operating capacity of one thousand one hundred forty-eight (1,148). It houses minimum, and medium security inmates. SCI also provides various treatment programming including the Greentree program.

Sussex Boot Camp  
Rt 13, Georgetown



The Sussex Boot Camp opened in 1997. It is a one hundred (100) bed facility (90 male, 10 female) operated under military style discipline, highly regimented routine of physical exercise, education, substance abuse treatment and community service.



# Department of Correction

## Sussex County Facilities (continued)



Sussex Community Correction Center  
Rt 13, Georgetown

The Sussex Community Correction Center (SCCC) opened in 1989 and has an operating capacity of two hundred forty-four (244). It houses male and female offenders who are participating in CREST residential treatment or work release program.

The Sussex Violation of Probation Center opened in 1999 and has an operating capacity of three hundred (300). It's a Level 4 facility for offenders who have violated the terms of their probation. The violations are technical rules of their supervision not the commitment of new criminal offenses. The SVOP operates under a highly regimented program of discipline, behavior modification and community service.



Sussex Violation of Probation Center  
Rt 13, Georgetown

# Department of Correction

## Sussex County Facilities (continued)

Georgetown Probation & Parole  
546 South Bedford Street, Georgetown



Georgetown P&P has been housed at the Georgetown State Service Center since 1995. Standard Level 2 and Level 3 offender caseloads are supervised at this location. In addition, other specialized caseloads are supervised at this location including Boot Camp, CREST/TASC, Domestic Violence, SCRAM, and Sex Offenders.

The Sussex Day Reporting Center opened in the fall of 1997. The Sussex County Governor's Task Force and the Sussex Street Unit operations are supervised at this location as well as administrative caseloads to include: Intake, Institutional Release, Level 1, and Pre-Trial.

Sussex Day Reporting Center  
22883 DuPont Blvd, Georgetown



# Department of Correction

## Sussex County Facilities (continued)

Seaford Probation & Parole  
Shipley State Service Cntr, 350 Virginia Avenue, Seaford



Seaford P&P has been housed at the Shipley State Center since 1986. In addition to Standard Level 2 and Level 3 offender caseloads, the following **specialized** caseloads are supervised at this location: CREST/TASC and Sex Offenders.

# Special Populations

- ISDP – 17 offenders currently pending execution
- Security Housing Unit – “Supermax” housing for 300 offenders
- Protective Custody – separated from general population for safety concerns

# Special Programs

- Key/Crest/Aftercare – Therapeutic continuum of substance abuse treatment.
  - ◆ Key at HRYCI, BWCI and SCI
  - ◆ Crest Primary at CVOP
  - ◆ Crest Work Release at HDP, MCCC, Webb and SCCC
- Men With a Mission – Braille Program
  - ◆ Provide textbooks to blind students

# Special Programs (Cont'd)

- Inside Out College Class held at HRYCI
- DSU college classes at JTVCC
- Vocational training programs
- Delaware Correctional Industries (DCI)
  - ◆ Printing, furniture refinishing, computer refurbishment, CDS, Garment shop

# Special Programs (Cont'd)

- P&P activities and caseloads:
  - ◆ Governors Task Force
  - ◆ Safe Streets
  - ◆ Tier III Sex Offenders
  - ◆ Intensive Supervision
  - ◆ Regular Probation
  - ◆ Interstate Supervision

# Specialized Activities

- Correctional Emergency Response Teams (CERT)
  - ◆ Breeching
  - ◆ Tactical assault
- Crisis Negotiation Team (CNT)
  - ◆ Trained in FBI model of negotiation



# Specialized Activities (Cont'd)

## ■ Tactical Survey

- ◆ Infrastructure of facilities
- ◆ Control all environmental aspects

## ■ Emergency Preparedness

- ◆ All staff trained in EP model
- ◆ All hazard approach to emergencies

# System Challenges

- Aging offender population
  - ◆ Significant medical problems
  - ◆ Geriatric care for offenders
- Medical
  - ◆ Constitutionally required
  - ◆ Poor care prior to incarceration
  - ◆ Chronologically older than free world
  - ◆ Approx \$40 Million per year expenditure for offender medical care
- Affordable Care Act
- CMMI/SIM Project Grant

# System Challenges (Cont'd)

- Work Force Development
  - ◆ Significant number of senior personnel will soon be eligible for retirement
  - ◆ Need to accelerate development of managers and executives

# System Challenges (Cont'd)

## ■ Budgetary constraints

- ◆ Large expenditure to build and staff facilities
- ◆ Diminished resources available

## ■ Infrastructure needs

- ◆ Need to update facilities and address maintenance issues

# Bureau of Correctional Healthcare Services



# Purpose of Presentation

- Explain BCHS and its mandate
- Describe BCHS current activities
- Discuss BCHS future plans



# Utilization of Resources

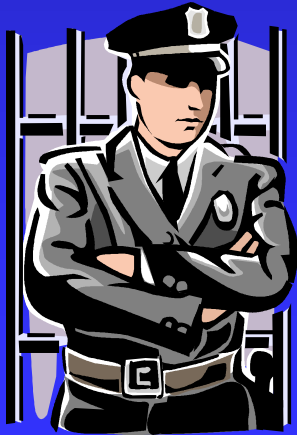
- DOC began by collaborating with the US DOJ to ensure the provision of fundamental patient care.
- BCHS created a continuous quality improvement (CQI) program that ensures offenders receive high quality healthcare, and that their care is consistent with evolving clinical standards.
- The following timeline show's DOC's utilization of resources in addressing offender healthcare from the inception of the MOA in 2006 to release of MOA in 2013:





# BCHS

- First new Bureau since Eisenhower
- Organizational re-structure
- Cultural change



# BCHS Mission



- Access to evidence-based standards of care; therapeutic environment that preserves dignity & autonomy
- Comply with NCCHC and ACA standards
- Enhance public safety & public health through provision of treatment to offenders

Please submit questions to  
[DOC\\_MedicalMail@state.de.us](mailto:DOC_MedicalMail@state.de.us)

Thank You.

~end