

ADDENDUM ISSUED BY

ABHA Architects, Inc.
1621 N. Lincoln Street
Wilmington, Delaware 19806

NOTICE: Attach this Addendum to the Project Manual for this project. It modifies and becomes a part of the Contract Documents. Work or materials not specifically mentioned herein are to be as described in the main body of the Specifications and as shown on the Drawings.

Acknowledge receipt of the Addendum in the spaced provided on the Bid Form.

This Addendum is being transmitted on the State of Delaware's Bid Solicitation Directory and can be accessed by logging-on to bids.delaware.gov and is listed as "New Dover HS - Signage" If there are any problems with legibility or content, please contact ABHA Architects, Inc. (302) 658-6426.

ATTACHMENTS

Revised Bid Tabulation Sheet (dated 6-2-14) -- 1-page
Drawings A-1754a & A-1754b -- (2-pages)
Sign Type V -- (1-page)
Sketch #1 -- (1-page)

CHANGES TO PROJECT MANUAL

SECTION 00 30 00 - BID FORM

Page 00 300-5

Delete sheet and substitute with Revised Bid Tabulation Sheet (dated 6-2-14).

CHANGES TO DRAWINGS

Graphic & Sign Standard Drawings --

Sheet 1- Brick Specifications

Brick to be as follows:

1. Face Brick A:
 - a. Texture: Smooth.
 - b. A blend of minimum (4) different reds of a narrow range.
 - c. Basis-of-Design Product: Subject to compliance with requirements, provide Colony Red Range as manufactured by Belden Brick.

Sheet 4 - Sign Type A

1. Note brick specification above.
2. See attached Drawings A-1754a & A-1754b for additional sign details.
3. The LED displays to allow for all of the following options:
 - a. Controlled by hard-wire to main building (fiber will be provided by others).
 - b. Wireless transmitter and receiver
 - c. Wireless 4 g connection.

Sheet 18 - Sign Type J

Add Building Entry Numeral similar to this sign type. See attached Sketch #1.

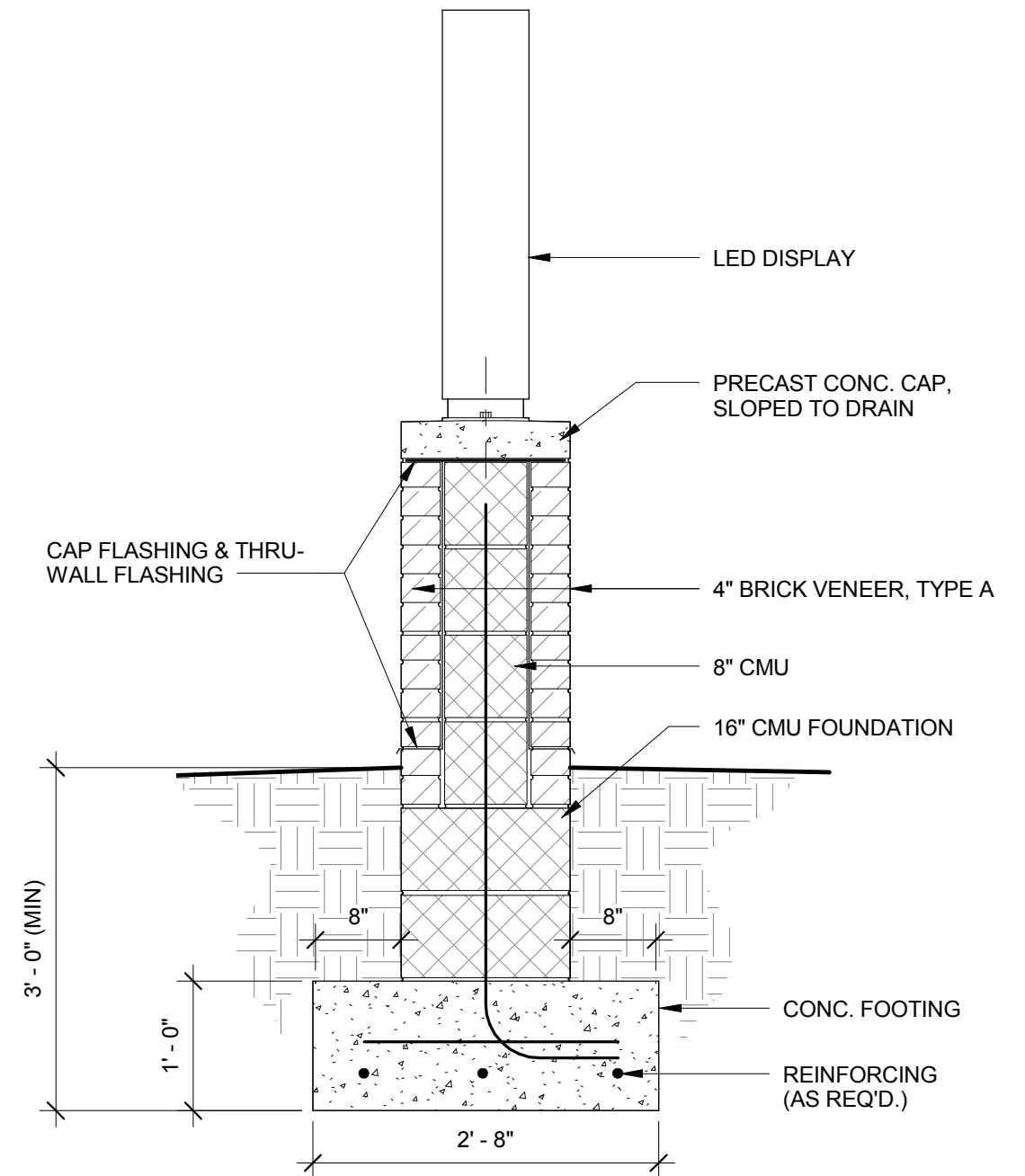
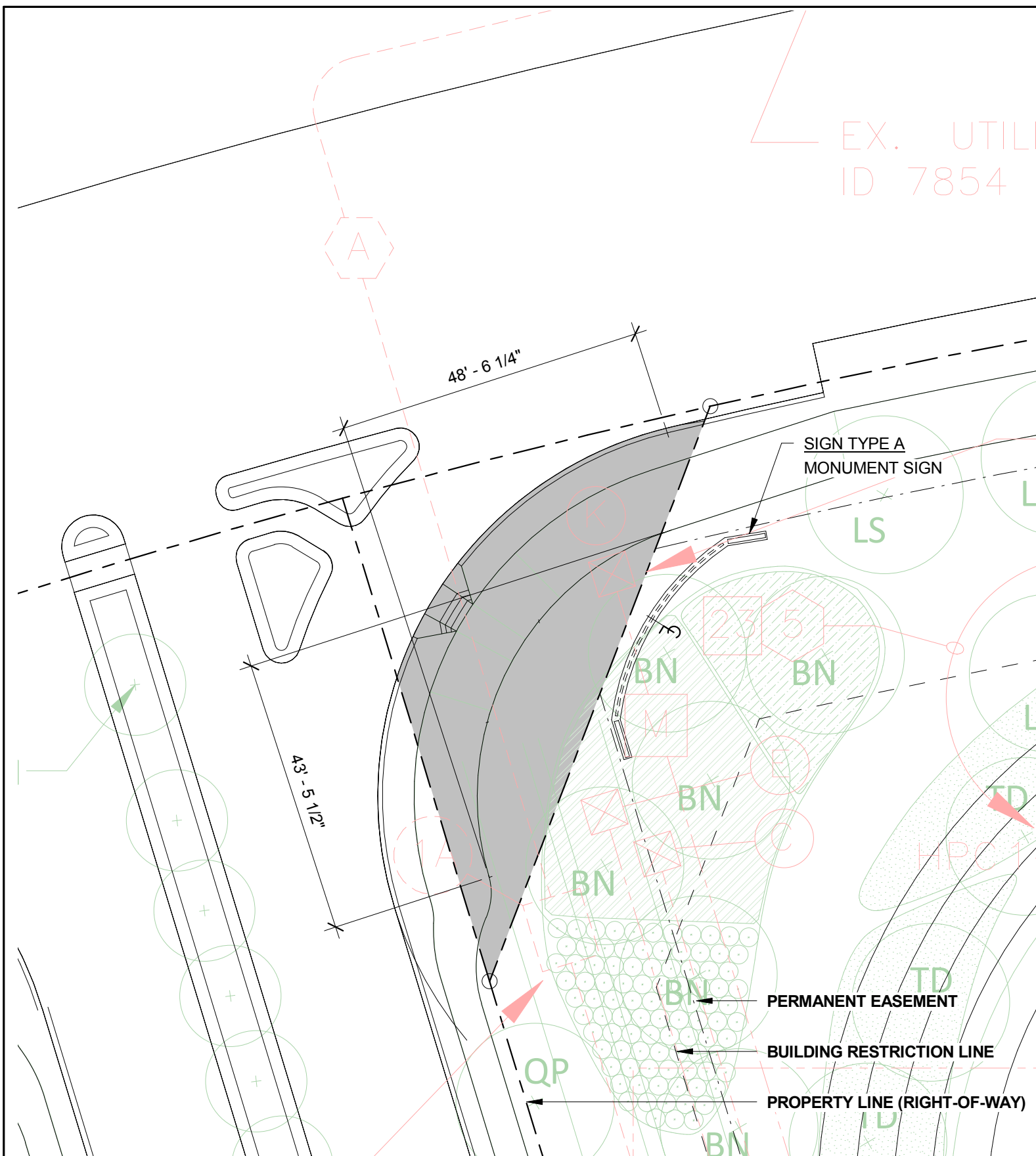
Sign Type V


Add this sign type. See attached drawing.

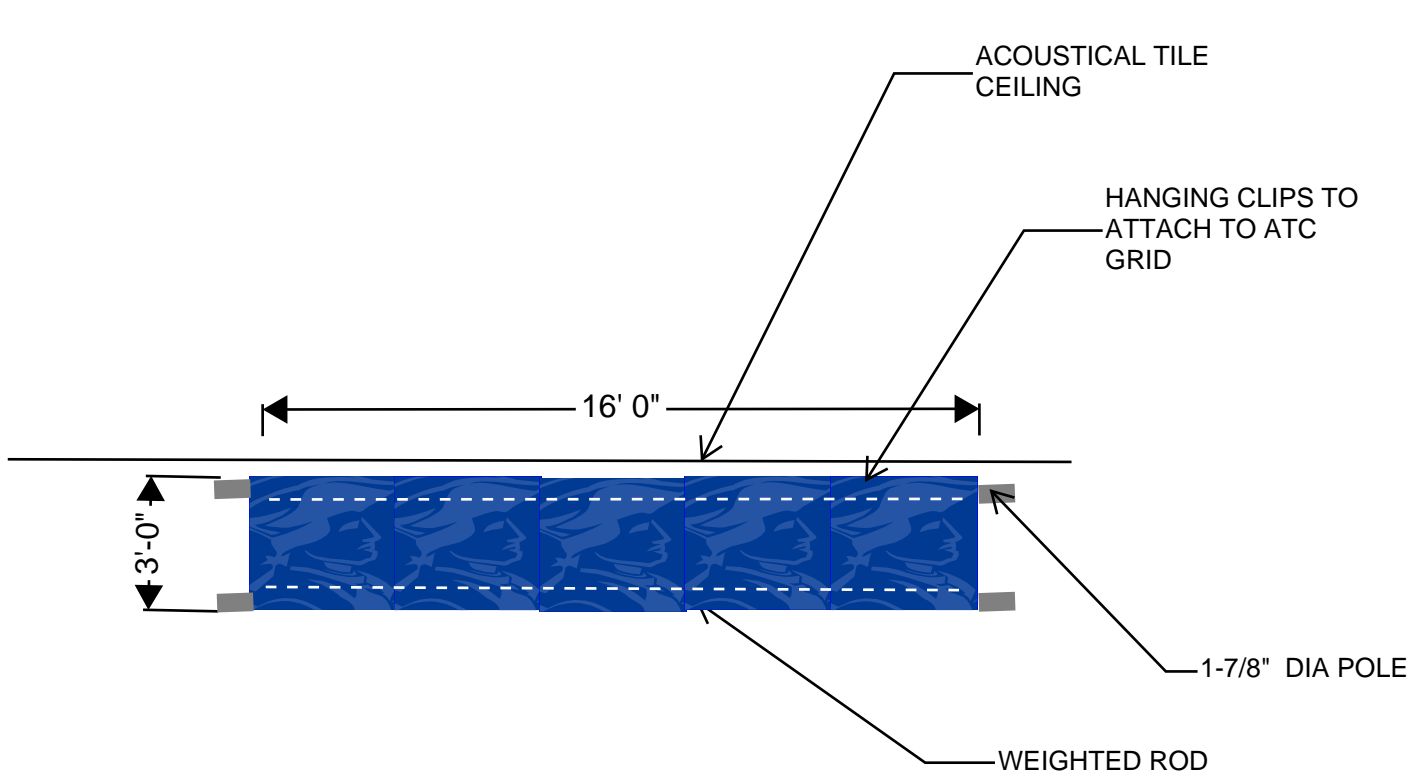
END OF ADDENDUM NO. 2

**New Dover High School
Signage**

Sign Type	Description	Quantity Reqd.	Basis of Bid Manuf.	Installed Price Total	Unit Price	Lead Time
Type A	Exterior - Monument Sign w/ Message Centers	1				
Type B1	Exterior - Entrance Signs - North Canopy	1				
Type B2	Exterior - Entrance Signs - South Canopy	1				
Type C	Exterior - Small Directional Signs	9				
Type C7	Exterior - Large Directional Sign	1				
Type D	Exterior - Field House Logo	1				
Type E	Exterior - Mesh Bleacher Banner	1				
Type F	Interior - ADA Room Signs - Small	362				
Type G1	Interior - ADA Room Signs - Large (Toilet/Stair/Elevator)	75				
Type G2	Interior - ADA Room Signs - Large (Feature Room)	66				
Type H	Interior - Directional Signage - Details	14				
Type I	Interior - Main Office - Logo Sign	1				
Type J	Interior - Main Street - Dimensional Copy - Schedule/Details	18				
Type K	Interior - Main Street - Ceiling Banners	28				
Type L	Interior - Main Street - Wall Plaques	12				
Type M	Interior - Gymnasium - Dimensional Copy	2				
Type N	Interior - Gymnasium - Senator Logo	1				
Type O	Interior - Gymnasium - "D" Logo	1				
Type P	Interior - Gymnasium - Athlete Banner	10				
Type Q	Interior - Gymnasium - State Champ Wall Plaques	40				
Type R	Interior - Gymnasium - Conference Champ Banners	13				
Type S	Interior - Gymnasium - Conference Member Banners	2-sets				
Type T	Interior - Gymnasium - Scoreboard Banners	2				
Type U	Interior - Auxiliary Gym - Banners	4				
Type V	Interior - Main Street - Soffit Banners	6				

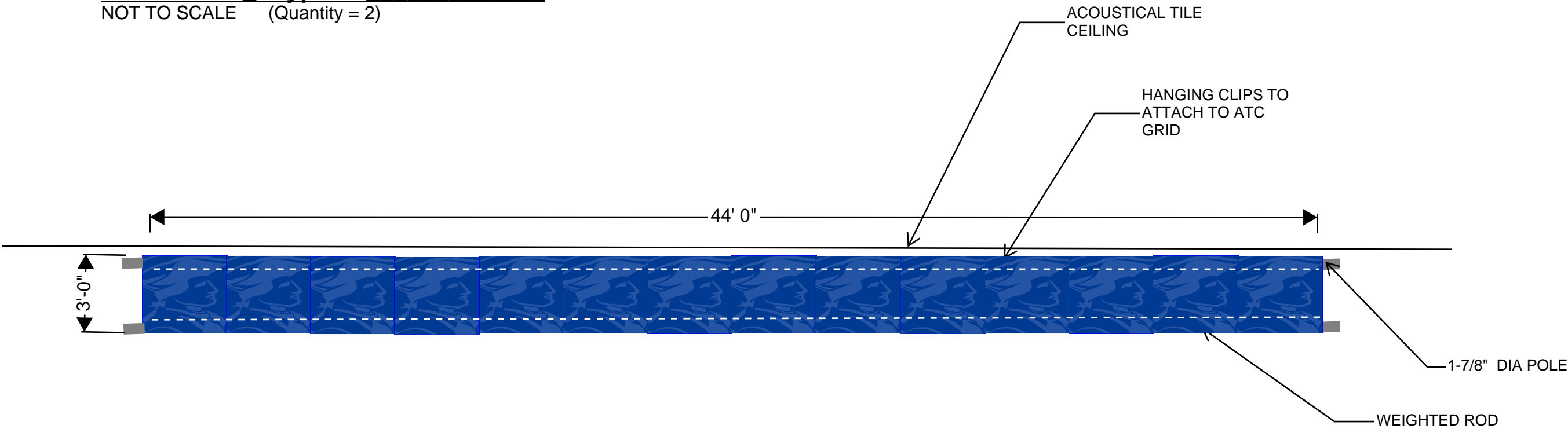


 <p>1621 N. Lincoln Street Wilmington, DE 19806 (P)302-658-6426 (F)302-658-8431</p> <p>abhagen@ABHA.com www.ABHA.com</p>	<p>SHEET TITLE</p> <p>SIGN TYPE A – MONUMENT SIGN – SITE & SECTION</p>		
	<p>PROJECT</p> <p>THE NEW DOVER HIGH SCHOOL</p>		
	<p>REV:</p>	<p>CONSULTANT</p>	<p>A-1754b</p>
	<p>ISSUE: 06/02/14</p>		
	<p>PROJECT NO: 1012</p>		
	<p>FILE NAME: 1012DHS.rvt</p>		
<p>DRAWN BY: Author</p>			
<p>CHECKED BY: Checker</p>			



ELEVATION - Type V1
NOT TO SCALE (Quantity = 2)

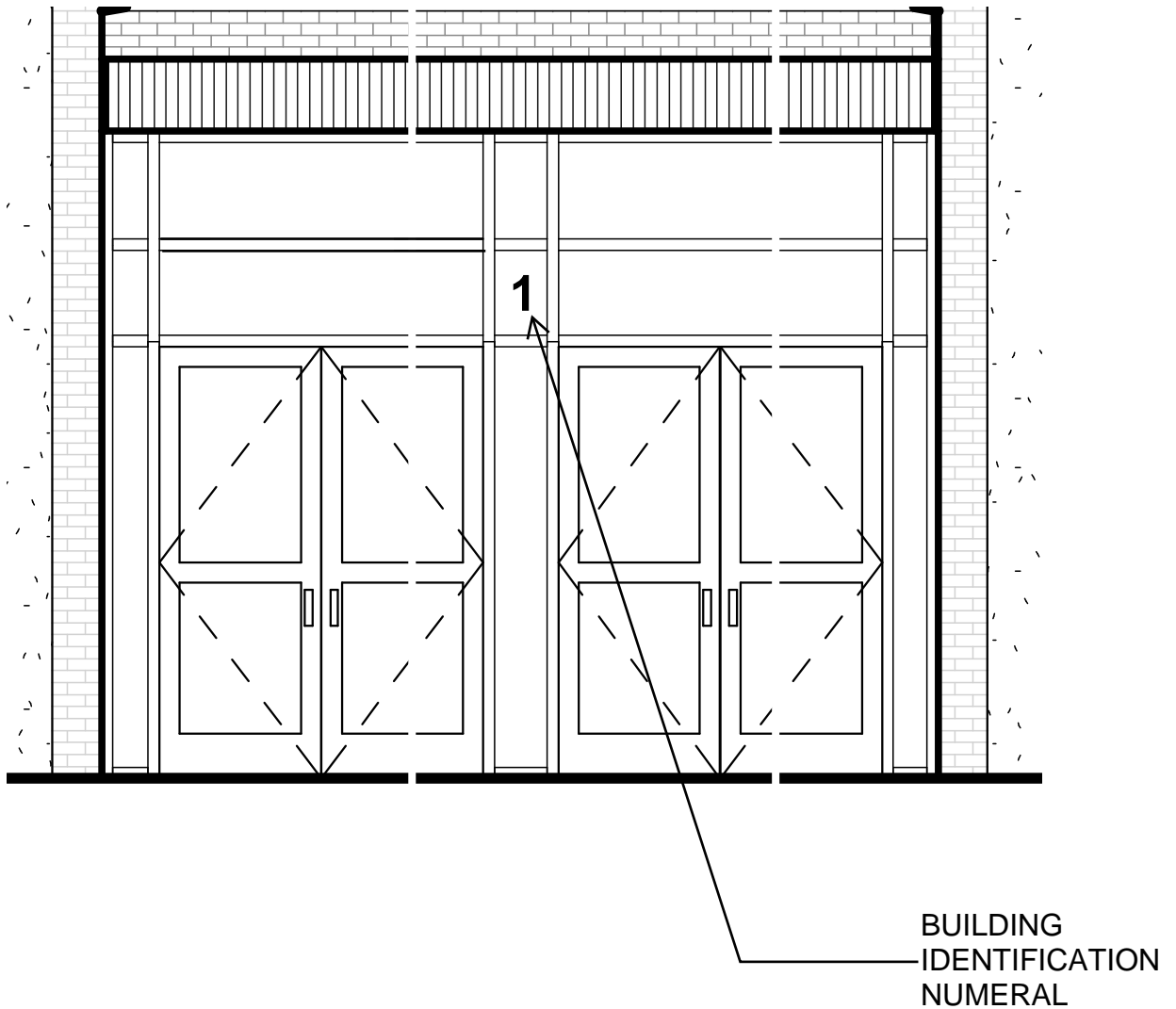
SIZE	As Noted
DBL. FACE or SINGLE FACE	single
BANNER MATERIAL	13 oz. vinyl
BANNER FINISH	To Match PMS# 287 C Blue
GRAPHICS SPECIFICATION	PMS# 287 C Blue Graphic 85% TBD @ LATER DATE (UNIQUE DESIGN ON EACH)
INSTALL METHOD	hang via 2" pole pocket @ top & aircraft cable



ELEVATION - Type V2
NOT TO SCALE (Quantity = 4)

Date: June 2, 2014

SIGN TYPE: V	Interior - Main Street - Soffit Banners
QUANTITY: 6	SHEET 1 of 1



BUILDING IDENTIFICATION NUMERAL (SEE SIGN TYPE J)

1. Locate between building exterior doors B101A & B101B
2. Provide for exterior use.
3. Mount on transom glazing. Provide matching (mirrored) cut-out on inside face of glass.

Dated: June 2, 2014

SKETCH #1