

Addendum No. 4

**Christina School District
Eden Support Center
925 Bear-Corbitt Road
Bear, Delaware 19701**

For the

**Computer Room
HVAC Renovations**

At

Eden Support Center

Contract No. CSD-2012-04

Project No. 11.069

September 19, 2012

Attached is one (1) copy of Addendum No. 4 for each set of bidding documents in your possession. No specifications, Drawings or bid will be considered complete without this Addendum No. 4

ADDENDUM NO. 4

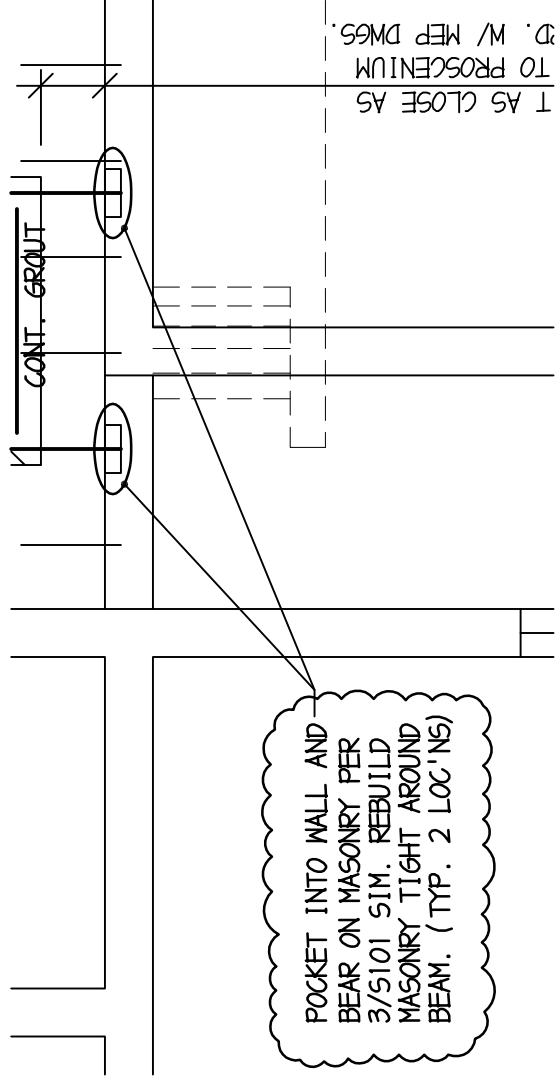
A. GENERAL:

- The bids are due September 20, 2012 at 2:00pm. There will be no extension of the bid date and time.

B. CHANGES TO DRAWINGS:

- Drawing S101:
 1. Note on plan for steel to be pocketed into wall. Refer to attached Sketch SK4.

Attachments: Sketch SK4



CONT. GROUT

T AS CLOSE AS
TO PROSCENIUM
RD. W/ MEP DMS

PARTIAL FIRST FLOOR FRAMING PLAN

$$\frac{1}{4} = 1 - 0$$

NOTES:

1. CONTRACTOR TO VERIFY EXACT LOCATION OF PRECAST JOIST AND COORDINATE BEAM LOCATIONS PER PLAN.
2. REF. MECH. DRAWINGS FOR LOCATION OF AHU'S.
3. CONTRACTOR TO LAYOUT UNITS AND STEEL ACCORDINGLY TO THESE NOTES AND THE MECHANICAL DRAWING. CONTACT ENGINEERS WITH CONCERNS AND QUESTIONS PRIOR TO STEEL FABRICATION.

NEW AHU'S
IT ROOM/ORIG. STAGE



BAKER, INGRAM, & ASSOCIATES
STRUCTURAL ENGINEERS

1050 South State Street, Dover, DE 19901

Lancaster, Pennsylvania
Dover, Delaware
Newark, Delaware
Haddon Heights, New Jersey
Centreville, Maryland

Project Number D7273.00
302.734.7400 Ph
302.734.7592 Fax
mail@bakeringram.com

DESIGNED BY: API	DATE: 09-18-12
DRAWN BY: AJC	SCALE: 3/4" = 1'-0"
CHECKED BY: API	W.O.: D7273.00
DRAWING NO.: SK4	SHEET: 1 OF 1