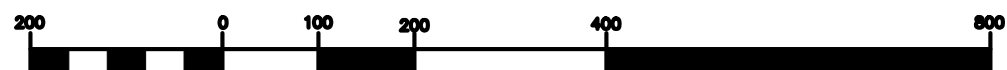



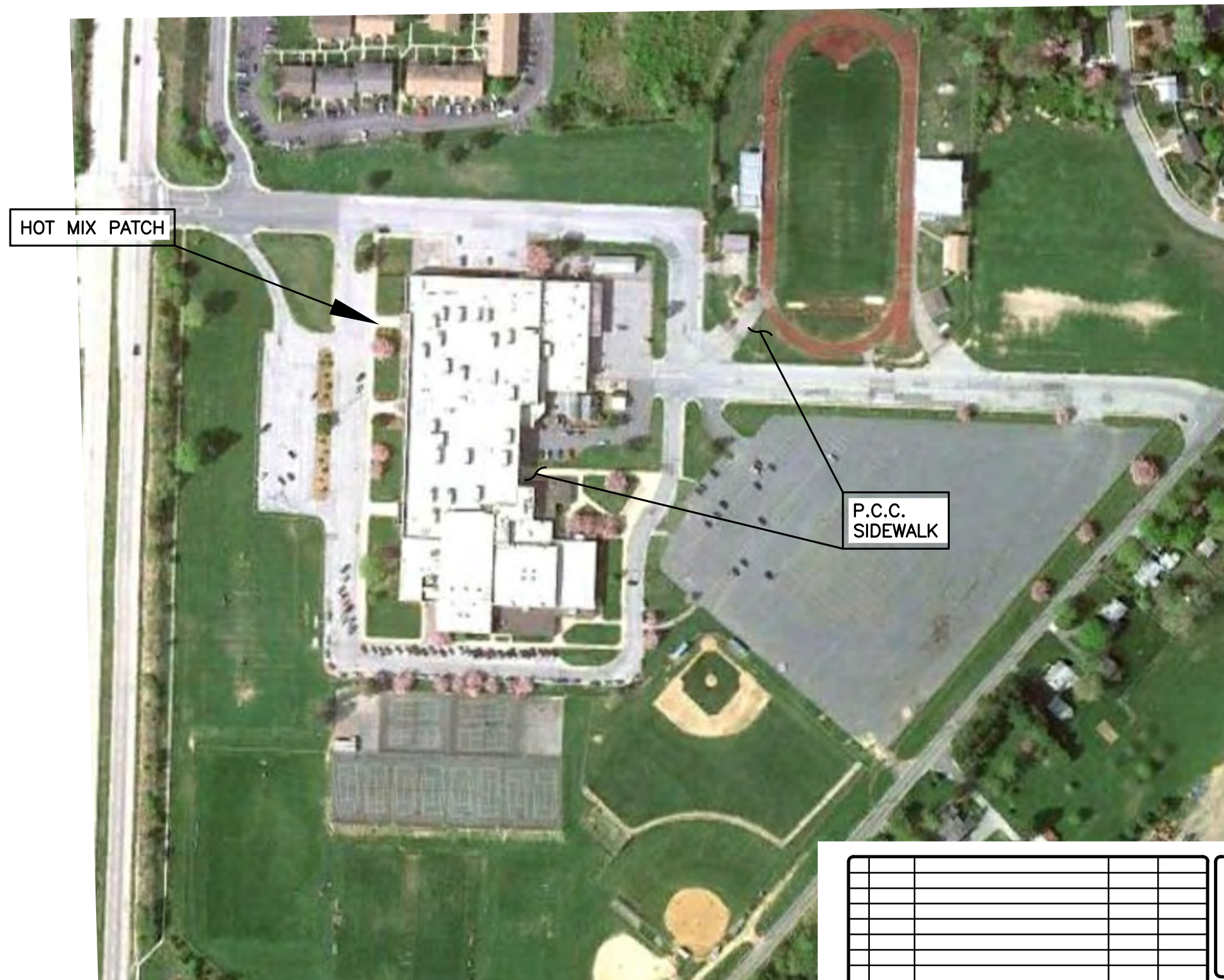
**NOTE: QUANTITIES AND/OR LOCATIONS OF REPAIRS SHOWN ON THIS PLAN ARE PRELIMINARY, AND INCLUDED TO ASSIST CONTRACTORS IN PREPARING BIDS. ACTUAL LOCATIONS WILL BE MARKED IN THE FIELD, AND QUANTITIES MEASURED FROM FIELD MARKINGS. SUCCESSFUL BIDDER WILL NOT BE PAID FOR ANY WORK PERFORMED THAT WAS NOT MARKED IN THE FIELD.**

CHRISTINA SCHOOL DISTRICT  
2011 POTHOLE BLACKTOP  
REPAIRS AND CONCRETE  
WORK  
PHASE 1

[illegible]

		<h1>VANDEMARK &amp; LYNCH, INC.</h1>	
		<p>ENGINEERS — PLANNERS — SURVEYORS</p>	
<p>4305 MILLER RD. WILMINGTON, DE 19802/(302) 764-7635 WWW.VANDEMARKLYNCH.COM</p>			
PERMANENT FILE <i>N/A</i>	QA REVIEW	APPROVED BY	
SURVEYED BY <i>N/A</i>	PROJECT MANAGER <i>S. JOHNS</i>	REFERENCE DRAWINGS	
COMPUTED BY <i>N/A</i>	DRAWN BY <i>N. CARLSON</i>		
PROJECT NO. <b>22914</b>	FILE NO. <b>22914-EXHIB-1</b>	SHEET <b>8 OF 19</b>	REVISION

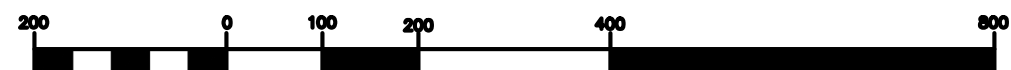


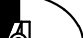


**NOTE: QUANTITIES AND/OR LOCATIONS OF REPAIRS SHOWN ON THIS PLAN ARE PRELIMINARY, AND INCLUDED TO ASSIST CONTRACTORS IN PREPARING BIDS. ACTUAL LOCATIONS WILL BE MARKED IN THE FIELD, AND QUANTITIES MEASURED FROM FIELD MARKINGS. SUCCESSFUL BIDDER WILL NOT BE PAID FOR ANY WORK PERFORMED THAT WAS NOT MARKED IN THE FIELD.**

CHRISTINA SCHOOL DISTRICT  
2011 POT HOLE BLACKTOP  
REPAIRS AND CONCRETE  
WORK  
PHASE 1

SKETCH OF REPAIRS TO BE PERFORMED AT  
GLASGOW HIGH SCHOOL  
1901 SOUTH COLLEGE AVENUE  
NEWARK, DE

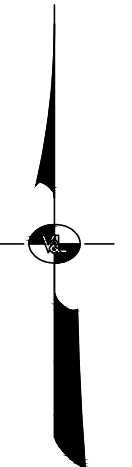
[illegible]

	<h1 style="margin: 0;">VANDEMARK &amp; LYNCH, INC.</h1> <p style="margin: 5px 0 0 0;">ENGINEERS — PLANNERS — SURVEYORS</p>	<p style="margin: 0;">4305 MILLER RD. WILMINGTON, DE 19802/(302) 764-7635 WWW.VANDEMARKLYNCH.COM</p>
<p>PERMANENT FILE</p> <p style="font-size: 1.2em;"><i>N/A</i></p>	<p>QA REVIEW</p>	<p>APPROVED BY</p>
<p>SURVEYED BY</p> <p style="font-size: 1.2em;"><i>N/A</i></p> <p>COMPUTED BY</p> <p style="font-size: 1.2em;"><i>N/A</i></p>	<p>PROJECT MANAGER</p> <p style="font-size: 1.2em;"><i>S. JOHNS</i></p> <p>DRAWN BY</p> <p style="font-size: 1.2em;"><i>N. CARLSON</i></p>	<p>REFERENCE DRAWINGS</p>
<p>PROJECT NO.</p> <p style="font-size: 1.5em;"><b>22914</b></p>	<p>FILE NO.</p> <p style="font-size: 1.5em;"><b>22914-EXHIB-1</b></p>	<p>SHEET</p> <p style="font-size: 1.5em;"><b>9 OF 19</b></p>
		<p>REVISION</p>



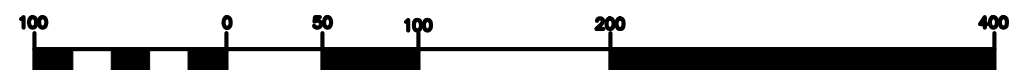


**NOTE: QUANTITIES AND/OR LOCATIONS OF REPAIRS SHOWN ON THIS PLAN ARE PRELIMINARY, AND INCLUDED TO ASSIST CONTRACTORS IN PREPARING BIDS. ACTUAL LOCATIONS WILL BE MARKED IN THE FIELD, AND QUANTITIES MEASURED FROM FIELD MARKINGS. SUCCESSFUL BIDDER WILL NOT BE PAID FOR ANY WORK PERFORMED THAT WAS NOT MARKED IN THE FIELD.**



CHRISTINA SCHOOL DISTRICT  
2011 POT HOLE BLACKTOP  
REPAIRS AND CONCRETE  
WORK  
PHASE 1

SKETCH OF REPAIRS TO BE PERFORMED AT  
JONES ELEMENTARY SCHOOL  
35 WEST MAIN STREET  
NEWARK, DE



APPROXIMATE GRAPHIC SCALE  
(IN FEET)

[illegible]

VANDEMARK & LYNCH, INC. IS NOT RESPONSIBLE FOR  
ANY MODIFICATION MADE TO THIS PLAN AND/OR CADD  
FILE WITHOUT ITS WRITTEN AUTHORIZATION.



**VANDEMARK  
& LYNCH, INC.**

ENGINEERS — PLANNERS — SURVEYORS

4305 MILLER RD.  
WILMINGTON, DE 19802/(302) 764-7635  
WWW.VANDEMARKLYNCH.COM

PERMANENT FILE  
N/A

QA REVIEW

APPROVED BY

SURVEYED BY  
N/A  
COMPUTED BY  
N/A

PROJECT MANAGER  
S. JOHNS  
DRAWN BY  
N. CARLSON

### REFERENCE DRAWINGS

PROJECT NO.  
**22914**

FILE NO.  
**22914-EXHIB-1**

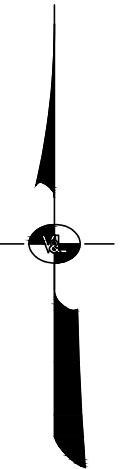
SHEET  
10 OF 19

REVISION



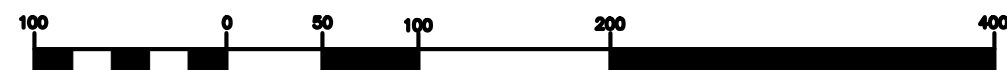


**NOTE: QUANTITIES AND/OR LOCATIONS OF REPAIRS SHOWN ON THIS PLAN ARE PRELIMINARY, AND INCLUDED TO ASSIST CONTRACTORS IN PREPARING BIDS. ACTUAL LOCATIONS WILL BE MARKED IN THE FIELD, AND QUANTITIES MEASURED FROM FIELD MARKINGS. SUCCESSFUL BIDDER WILL NOT BE PAID FOR ANY WORK PERFORMED THAT WAS NOT MARKED IN THE FIELD.**



CHRISTINA SCHOOL DISTRICT  
2011 POT HOLE BLACKTOP  
REPAIRS AND CONCRETE  
WORK  
PHASE 1

SKETCH OF REPAIRS TO BE PERFORMED AT  
MACLARY ELEMENTARY SCHOOL  
300 SAINT REGIS DRIVE  
NEWARK, DE



APPROXIMATE GRAPHIC SCALE  
(IN FEET)

[illegible]

VANDEMARK & LYNCH, INC. IS NOT RESPONSIBLE FOR  
 ANY MODIFICATION MADE TO THIS PLAN AND/OR CADD  
 FILE WITHOUT ITS WRITTEN AUTHORIZATION.



**VANDEMARK  
& LYNCH, INC.**

ENGINEERS — PLANNERS — SURVEYORS

4305 MILLER RD.  
WILMINGTON, DE 19802/(302) 764-7635  
WWW.VANDEMARKLYNCH.COM

PERMANENT FILE  
N/A

QA REVIEW

APPROVED BY

SURVEYED BY  
N/A  
COMPUTED BY  
N/A

PROJECT MANAGER  
S. JOHNS  
DRAWN BY  
N. CARLSON

### REFERENCE DRAWINGS

PROJECT NO.  
**22914**

FILE NO.  
**22914-EXHIB-1**

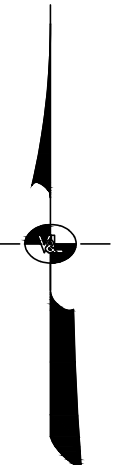
SHEET  
11 OF 19

REVISION



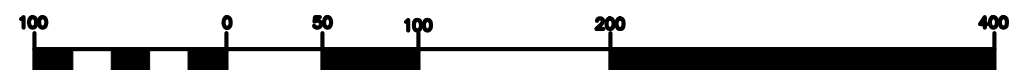


**NOTE: QUANTITIES AND/OR LOCATIONS OF REPAIRS SHOWN ON THIS PLAN ARE PRELIMINARY, AND INCLUDED TO ASSIST CONTRACTORS IN PREPARING BIDS. ACTUAL LOCATIONS WILL BE MARKED IN THE FIELD, AND QUANTITIES MEASURED FROM FIELD MARKINGS. SUCCESSFUL BIDDER WILL NOT BE PAID FOR ANY WORK PERFORMED THAT WAS NOT MARKED IN THE FIELD.**



CHRISTINA SCHOOL DISTRICT  
2011 POT HOLE BLACKTOP  
REPAIRS AND CONCRETE  
WORK  
PHASE 1

SKETCH OF REPAIRS TO BE PERFORMED AT  
BRADER ELEMENTARY SCHOOL  
350 FOUR SEASONS PARKWAY  
NEWARK, DE



APPROXIMATE GRAPHIC SCALE  
(IN FEET)

[illegible]

**VANDEMARK & LYNCH, INC. IS NOT RESPONSIBLE FOR  
 ANY MODIFICATION MADE TO THIS PLAN AND/OR CADD  
 FILE WITHOUT ITS WRITTEN AUTHORIZATION.**

**VANDEMARK  
& LYNCH, INC.**

ENGINEERS — PLANNERS — SURVEYORS

4305 MILLER RD.  
WILMINGTON, DE 19802/(302) 764-7635  
WWW.VANDEMARKLYNCH.COM

PERMANENT FILE  
N/A

QA REVIEW

APPROVED BY

SURVEYED BY  
N/A  
COMPUTED BY  
N/A

PROJECT MANAGER  
S. JOHNS  
DRAWN BY  
N. CARLSON

### REFERENCE DRAWINGS

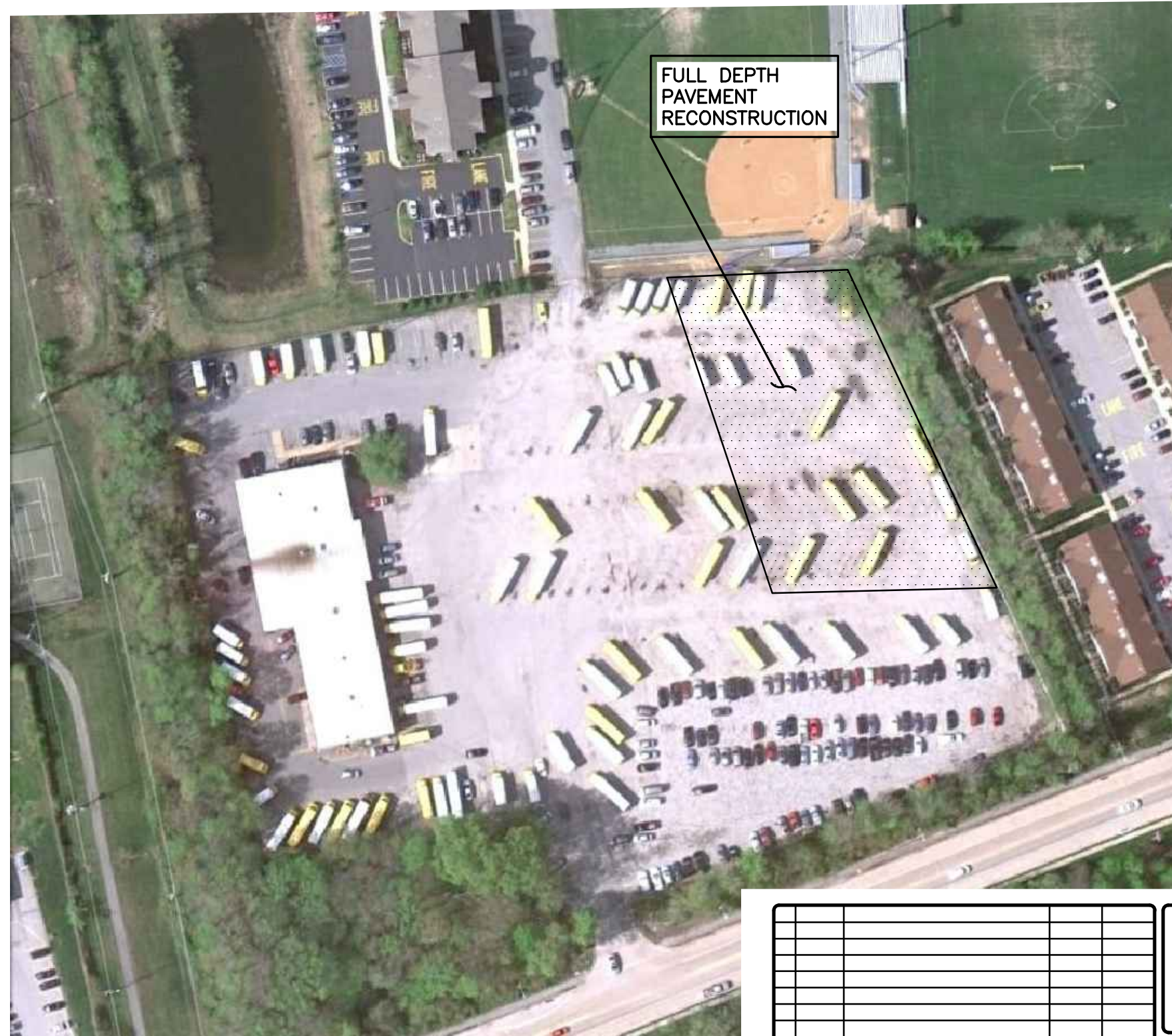
PROJECT NO.  
**22914**

FILE NO.  
**22914-EXHIB-1**

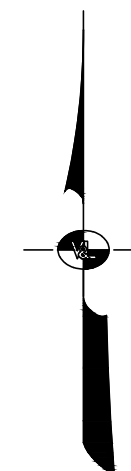
SHEET  
12 OF 19

REVISION





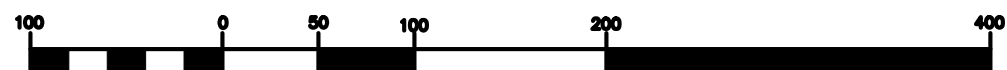
**NOTE: QUANTITIES AND/OR LOCATIONS OF REPAIRS SHOWN ON THIS PLAN ARE PRELIMINARY, AND INCLUDED TO ASSIST CONTRACTORS IN PREPARING BIDS. ACTUAL LOCATIONS WILL BE MARKED IN THE FIELD, AND QUANTITIES MEASURED FROM FIELD MARKINGS. SUCCESSFUL BIDDER WILL NOT BE PAID FOR ANY WORK PERFORMED THAT WAS NOT MARKED IN THE FIELD.**



CHRISTINA SCHOOL DISTRICT  
2011 POTHOLE BLACKTOP  
REPAIRS AND CONCRETE  
WORK  
PHASE 2

### SKETCH OF REPAIRS TO BE PERFORMED AT

CHRISTINA SCHOOL DISTRICT  
TRANSPORTATION YARD  
400 WYOMING ROAD  
NEWARK, DE



APPROXIMATE GRAPHIC SCALE  
(IN FEET)

[illegible]

**VANDEMARK & LYNCH, INC. IS NOT RESPONSIBLE FOR  
 ANY MODIFICATION MADE TO THIS PLAN AND/OR CADD  
 FILE WITHOUT ITS WRITTEN AUTHORIZATION.**



**VANDEMARK  
& LYNCH, INC.**

ENGINEERS - PLANNERS - SURVEYORS

4305 MILLER RD.  
WILMINGTON, DE 19802/(302) 764-7635  
WWW.VANDEMARKLYNCH.COM

PERMANENT FILE  
N/A

QA REVIEW

APPROVED BY

SURVEYED BY  
N/A  
COMPUTED BY  
N/A

COMPUTED BY  
N/A

PROJECT MANAGER  
S. JOHNS  
DRAWN BY  
N. CARLSON

DRAWN BY  
N. CARLSON

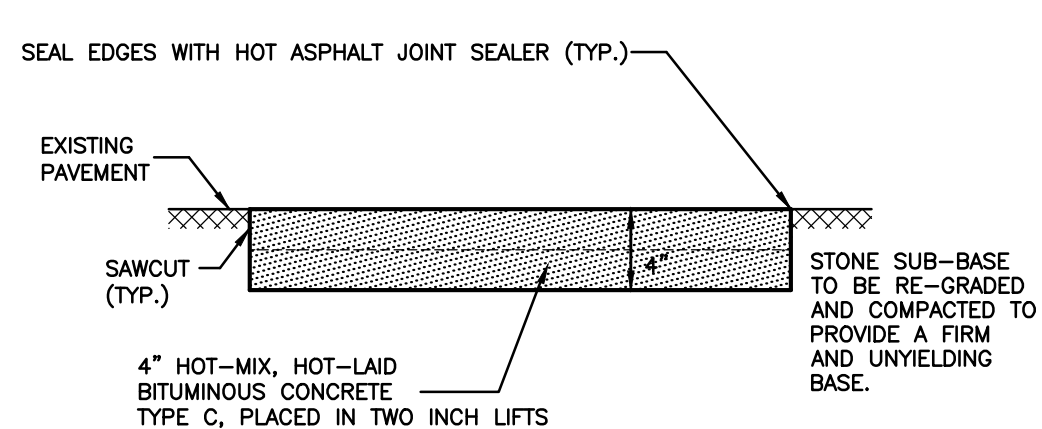
## REFERENCE DRAWINGS

PROJECT NO  
**22914**

FILE NO.  
**22914-EXHIB-1**

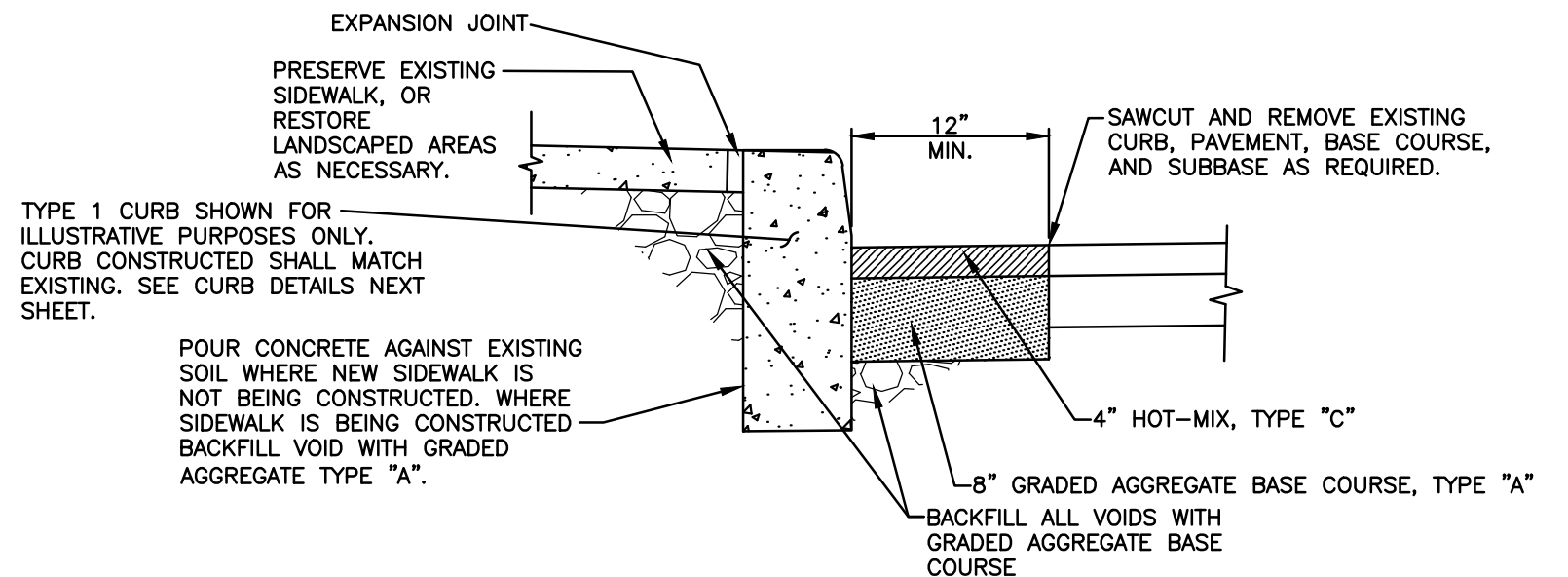
SHEET  
13 OF 19

REVISION

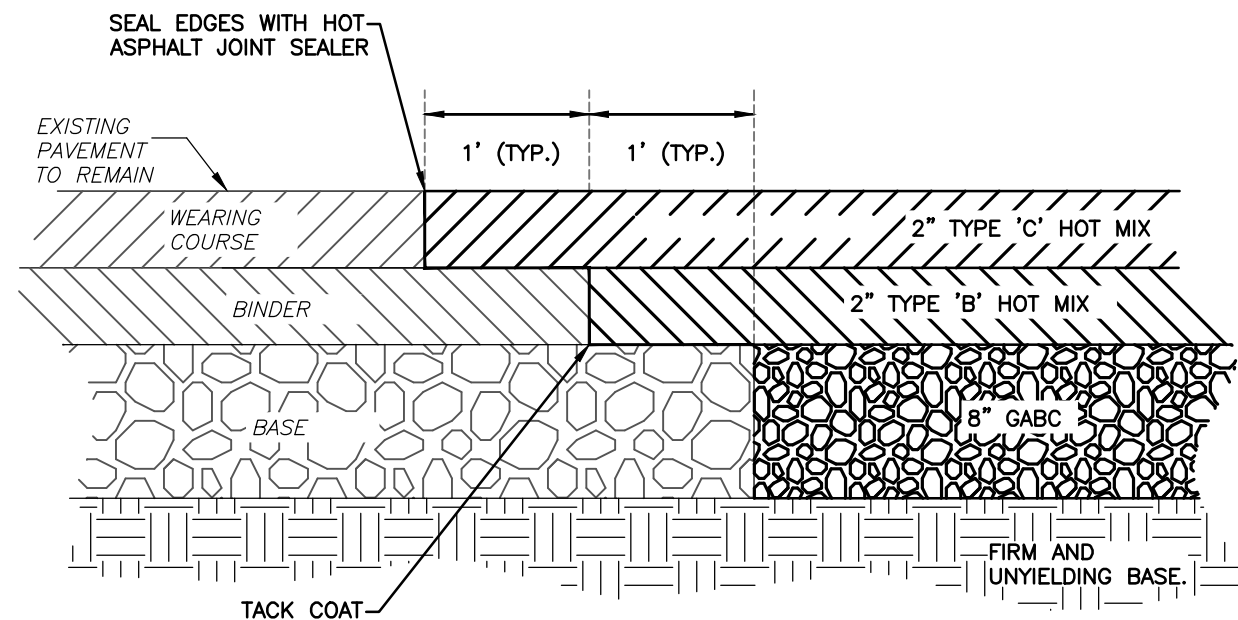
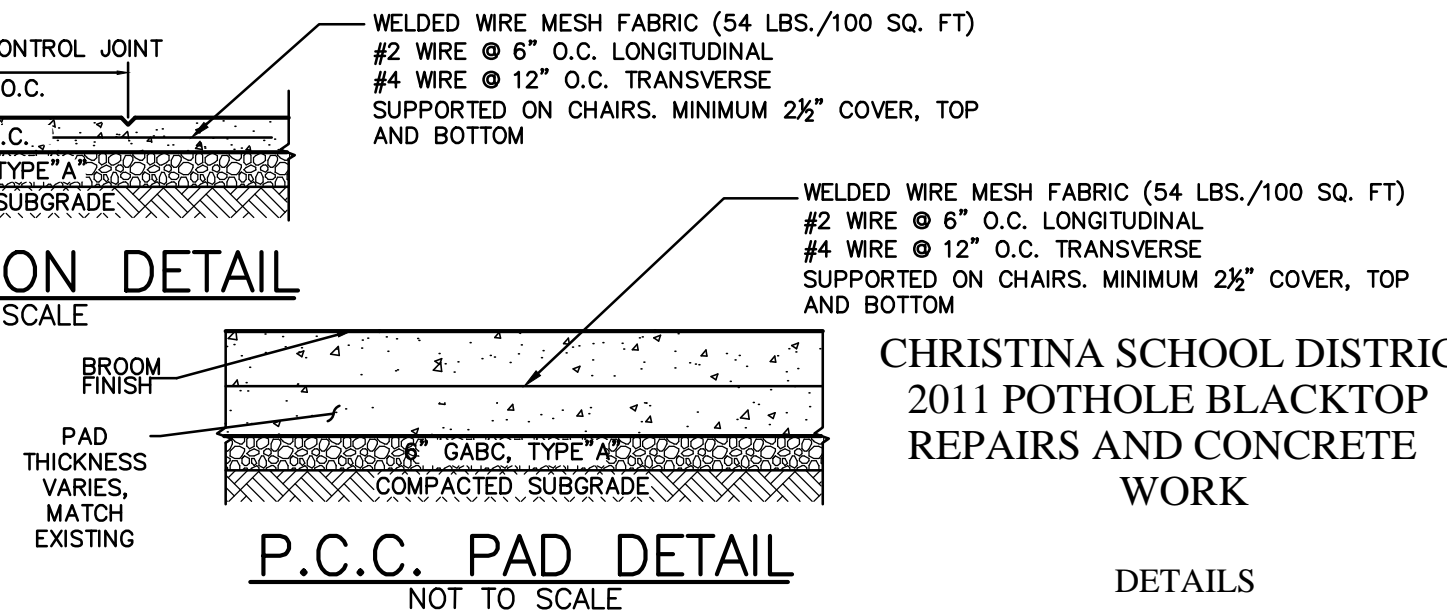
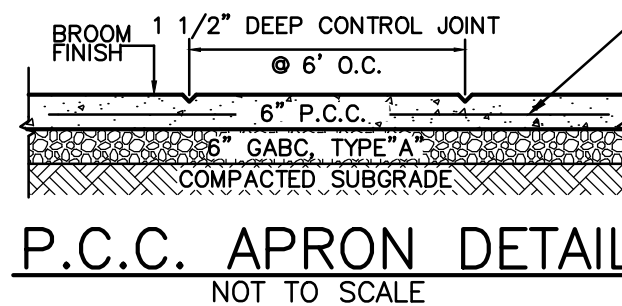
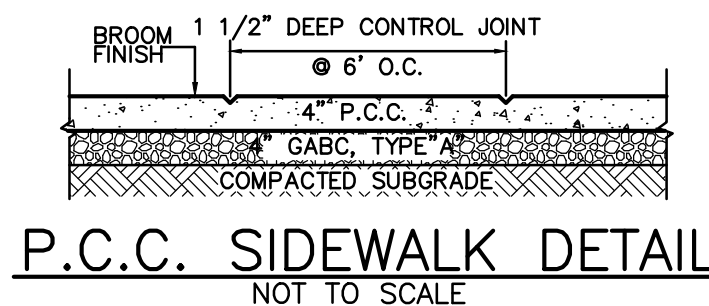


# HOT MIX PATCH DETAIL

NOT TO SCALE



## PAVEMENT PATCH AT NEW CURBING DETAIL

[illegible]

**VANDEMARK & LYNCH, INC. IS NOT RESPONSIBLE FOR  
 ANY MODIFICATION MADE TO THIS PLAN AND/OR CADD  
 FILE WITHOUT ITS WRITTEN AUTHORIZATION.**



**VANDEMARK  
& LYNCH, INC.**

**ENGINEERS - PLANNERS - SURVEYORS**  
4305 MILLER RD.  
WILMINGTON, DE 19802/(302) 764-7635  
WWW.VANDEMARKLYNCH.COM

PERMANENT FILE <i>N/A</i>	QA REVIEW	APPROVED BY	
SURVEYED BY <i>N/A</i>	PROJECT MANAGER <i>S. KOSKI</i>	REFERENCE DRAWINGS	
COMPUTED BY <i>N/A</i>	DRAWN BY <i>N. CARLSON</i>		
PROJECT NO. <i>22914</i>	FILE NO. <i>22914-EXHIB-1</i>	SHEET <i>14</i> OF <i>19</i>	REVISION