

ADDENDUM NO. 2 ISSUED BY

ABHA Architects  
1621 N. Lincoln Street  
Wilmington, Delaware 19806

NOTICE: Attach this Addendum to the Project Manual for this project. It modifies and becomes a part of the Contract Documents. Work or materials not specifically mentioned herein are to be as described in the main body of the Specifications and as shown on the Drawings. Acknowledge receipt of the Addendum in the space provided on the Bid Form.

This Addendum includes the following (3 pages total including attachments):  
CHANGES TO ADDENDUM NO. 1  
CHANGES TO DRAWINGS

**ATTACHMENTS:**

DRAWING NO. A-701 CUPOLA DETAIL

DRAWING NO. A-702 PARTIAL ROOF PLAN

**CHANGES TO ADDENDUM NO. 1**

SECTION 07 5300 – ELASTOMERIC MEMBRANE ROOFING

Page 2, Article 2.04, Paragraph A:

Add Subparagraph 3:

3. Tapered Board: Slope **1/8** inch per foot as indicated; minimum thickness **0 inch (0 mm); fabricate in one layer.**

**CHANGES TO DRAWINGS**

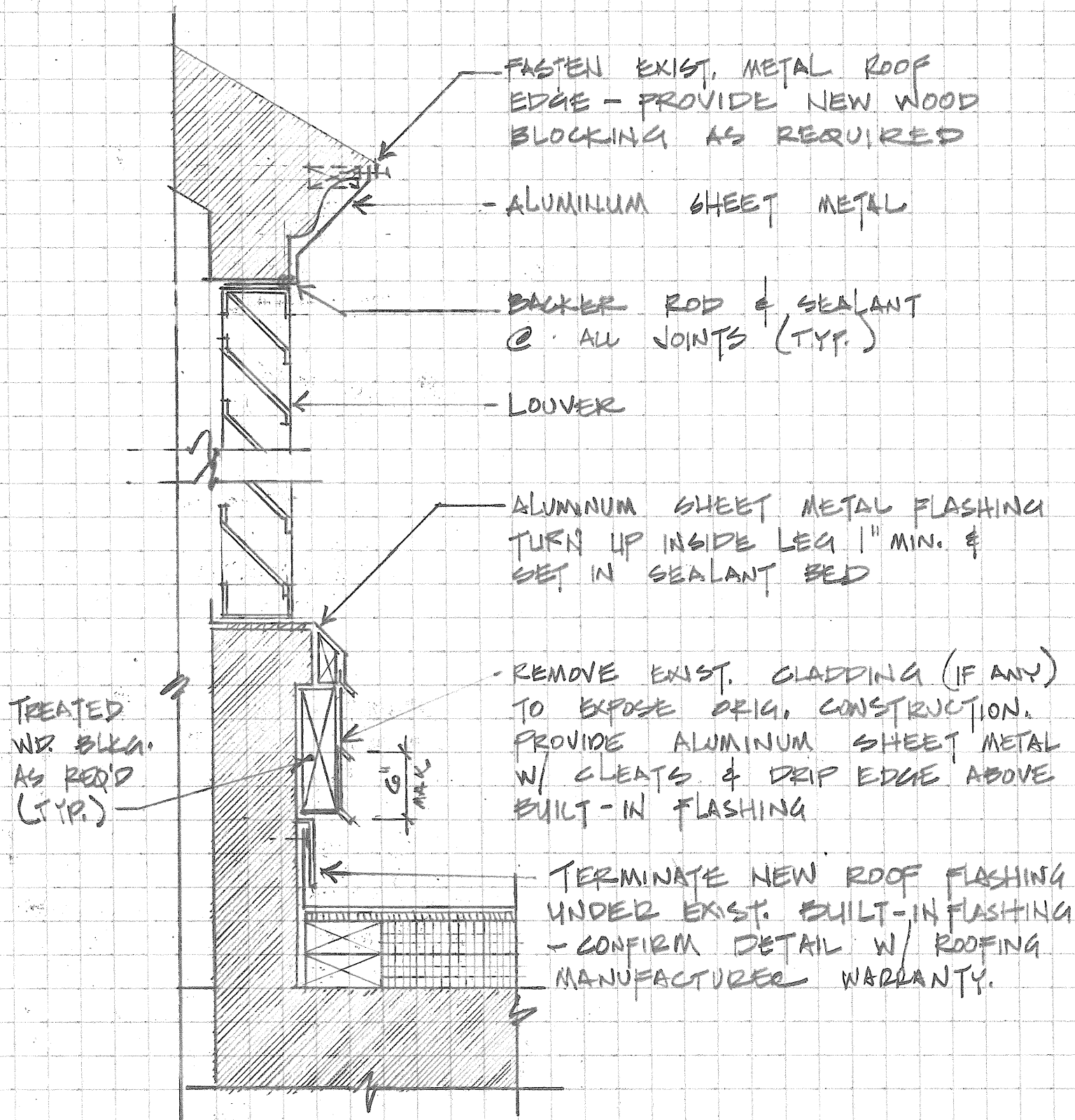
DRAWING NO. A-701 CUPOLA DETAIL

Add Drawing included in this addendum.

DRAWING NO. A-702 PARTIAL ROOF PLAN

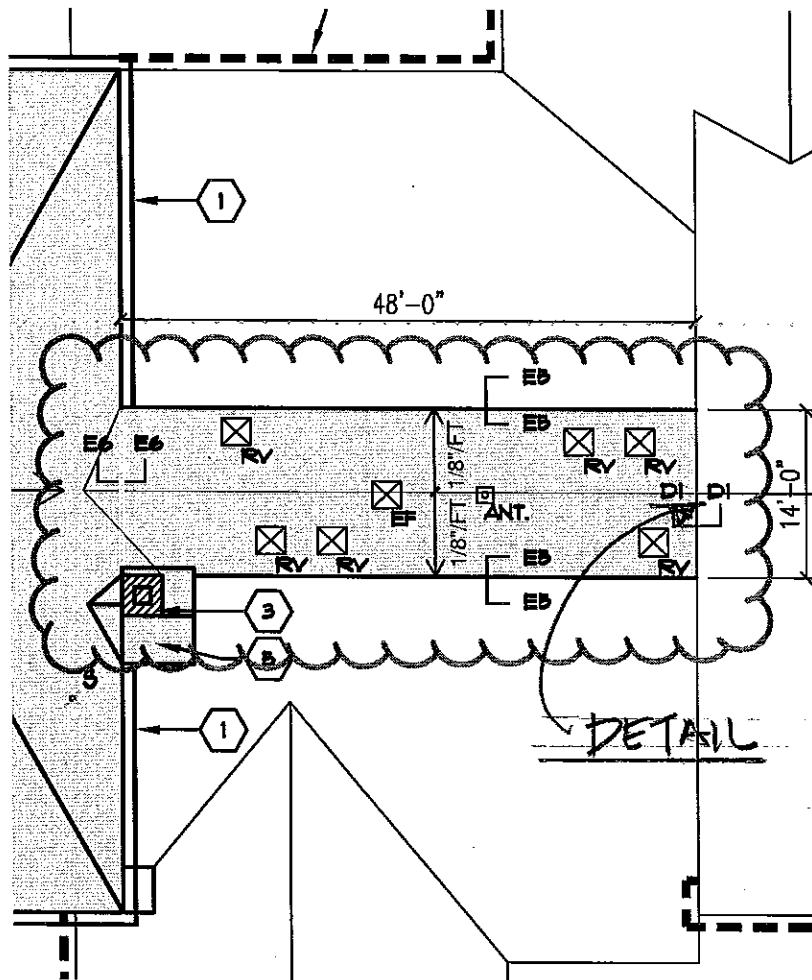
Add Drawing included in this addendum.

END OF ADDENDUM NO. 2



DETAIL @ CUPOLA

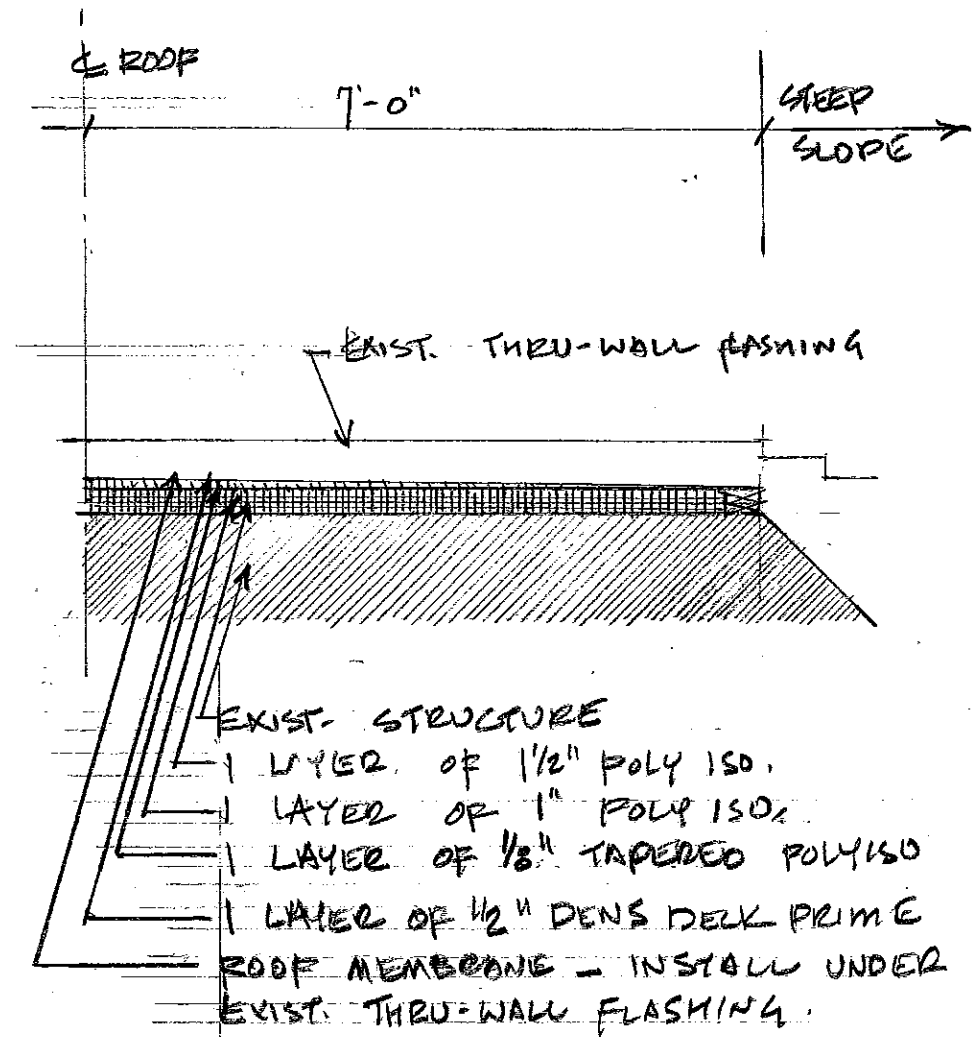
NOT TO SCALE



**PARTIAL ROOF PLAN**  
SCALE : NTS

CARRCROFT ELEMENTARY  
SCHOOL REROOFING

ABHA Architects, Inc.  
Proj. No. 1229



DWG. NO. A-702  
DATE: 04/25/13